

The Ruck logo is located in the top right corner of the image. It consists of the word "ruck" in a bold, black, sans-serif font, set against a bright yellow rectangular background.

**ruck**



# THE ROTO K SERIES

High flexibility, high air volumes

## WE FIND THE BEST SOLUTION FOR YOU

**ruck Ventilatoren** is a family-owned company specialising in the development, production and distribution of high quality and innovative standard and customised OEM products in the field of ventilation and technology. Our products and ideas are transformed into efficient and cost-saving solutions.



### RUCK VENTILATOREN GMBH

Founded in a garage in 1992, the company has built up a strong global reputation with numerous innovations.

- Locations: Germany, Romania, United Kingdom, United States
- Employees: Approx. 400
- In-house R&D department
- Production area: 42.500 sqm
- Deep level of production: plastic injection molding, sheet metal processing, powder coating
- Delivery reliability due to large stock of components

## THE RIGHT SOLUTION FOR EVERY APPLICATION

### Innovative, efficient solutions

We use state-of-the-art development tools to optimize our products down to the smallest detail: efficiency and innovation are matters close to our hearts. A deep level of production guarantees fast implementation and high delivery reliability.



### Know-how transfer

A fan must be appropriately selected, properly installed and intelligently operated to realize its full savings potential. We are happy to share our knowledge with you to help you achieve the best possible results.

### Pinpoint advice

With our MATCH-Point, you can find the best fan for your system in just a few minutes. All the important information for your decision, in particular the operation point data as well as the investment and operating costs, can be found here in unprecedented clarity.

# MATCH MAKES IT EFFICIENT

## INNOVATIVE TECHNOLOGY USED INTELLIGENTLY

Our MATCH principle takes into account all relevant components for the optimal use of a fan or air handling unit. When these are fulfilled – i.e. “matched” – it will operate with the best possible results.



## MATCH-POINT

The ultimate design tool with lots of new information for easy and cost-saving fan and air handling units selection.

## MOTOR

### Drives matched to requirements

The efficiency and cost of a fan depend to a large extent on the motor. It should meet the specific requirements in the best possible way. For this purpose, we offer a wide selection and mostly from stock.

## AERODYNAMIC

### Air flows optimized with attention to detail

Aerodynamically good fans and air handling units are characterized by the optimum interaction of all components. In extensive CFD simulations, we optimize our components down to the smallest detail to maximize the efficiency of our products.

## TOOL

### Good choice, good effect

A highly efficient technology only brings the desired values if it is used correctly. Our MATCH-Point helps you to find the optimal fan or air handling unit for your system.

## CONTROL

### Saving energy: A question of attitude

Fans are often designed for maximum demand, but this is only present for a few hours a year. The energy demand of a fan increases disproportionately in relation to the volume flow. Control based on actual demand offers the greatest potential for savings.

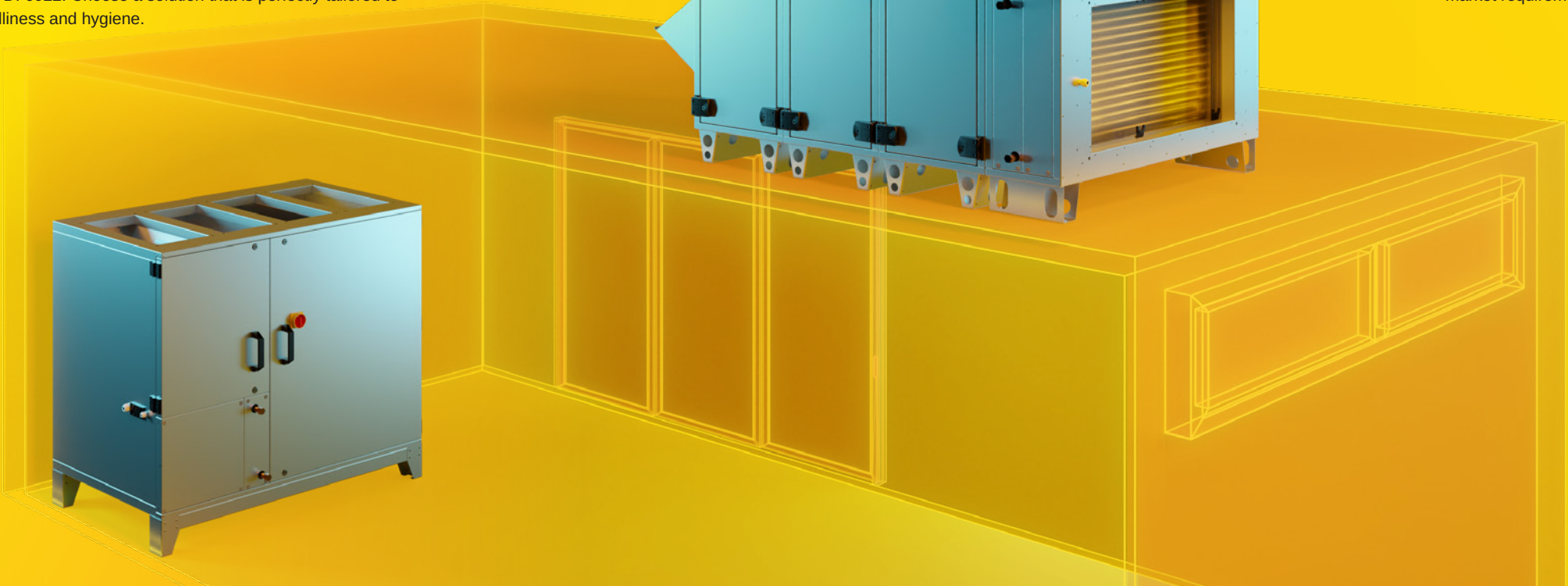
## HANDLING

### Right setting, full potential development

As a component of ventilation systems, inexpensive, professional installation leads to efficient operation with low pressure losses. With our products, we place great value on the most flexible and simple installation possible, as well as on problem-free maintenance.

# HIGHER AIR PERFORMANCE AND FLEXIBILITY

The new ROTO K series now also offers divisible models that can convey air flows of up to 20.000 m³/h. It is available with vertical or horizontal connections and can be used flexibly in many areas thanks to the Plug & Play system. It was developed along the lines of the VDI 6022. Choose a solution that is perfectly tailored to technology, user-friendliness and hygiene.



# INSTALL, OPERATE, MAINTAIN: A BREEZE

The ROTO K air handling units are easy to install and commission thanks to their different versions and the new divisible models. The intuitive control and removable doors facilitate operation and maintenance and contribute to an efficient overall package that meets current market requirements.

## DESIGNED FOR YOUR NEEDS

Versions	One-piece or divisible devices with horizontal (H) or vertical (V) connections
Sizes	Floor-standing units one-piece: 4 sizes up to 13.000 m³/h Floor-standing units divisible: 4 sizes up to 20.000 m³/h
Heating element	Optionally: none, PWW, DX coil
Controls	3,5" Touch remote control included in delivery as standard Remotely possible via app



# ROTO K H & V ONE-PIECE

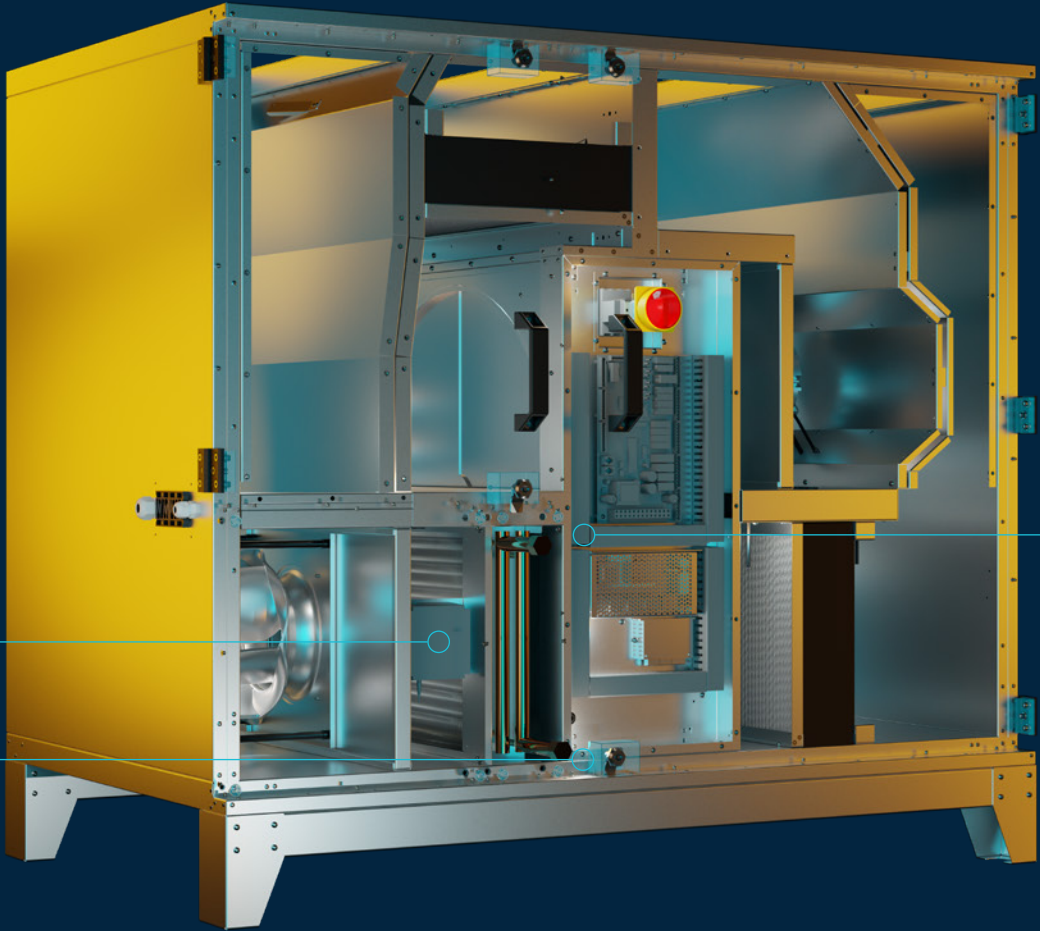
The one-piece ROTO K H and ROTO K V units now convey volume flows of up to 13.000 m³/h. The integrated, corrosion-resistant aluminium rotary heat exchanger with its heat and moisture recovery ensure a pleasant room climate even during winter. Weather-protected outdoor installation is possible with the appropriate accessories.

## COMPACT AIR HANDLING UNITS WITH ROTARY HEAT EXCHANGER

Housing	Frameless double-wall housing made of galvanised sheet steel
Air performance	ROTO K H up to 13.000 m³/h, ROTO K V up to 5.000 m³/h
Insulation	50 mm (H) and 40 mm (V) non-combustible mineral wool
Heat exchanger	High-efficiency aluminium rotary heat exchangers with Eurovent certification
EC-fans	Efficiency-optimised backward-curved centrifugal impellers with EC external rotor motor
Plug & Play	Pre-wired, pre-configured and factory tested
Maintenance	Large doors for easy access to all components, opening on both sides and detachable
Night cooling	Adjustable rotation speed of the rotary heat exchanger for night cooling in summer

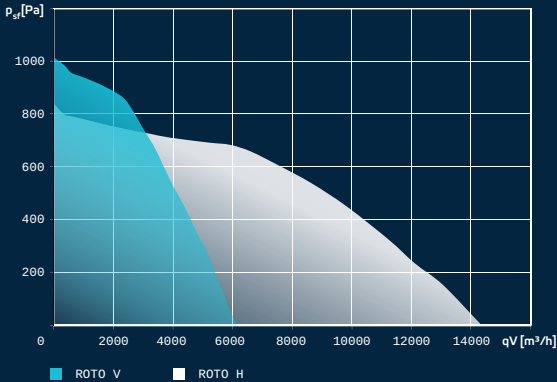
Hot water coil

Concealed pipes / cables and pressure hoses for hygienic operation



Exemplary representation:  
ROTO K V

Air flow rate



Large hinged maintenance doors provide optimum access to all components

# ROTO K H T DIVISIBLE

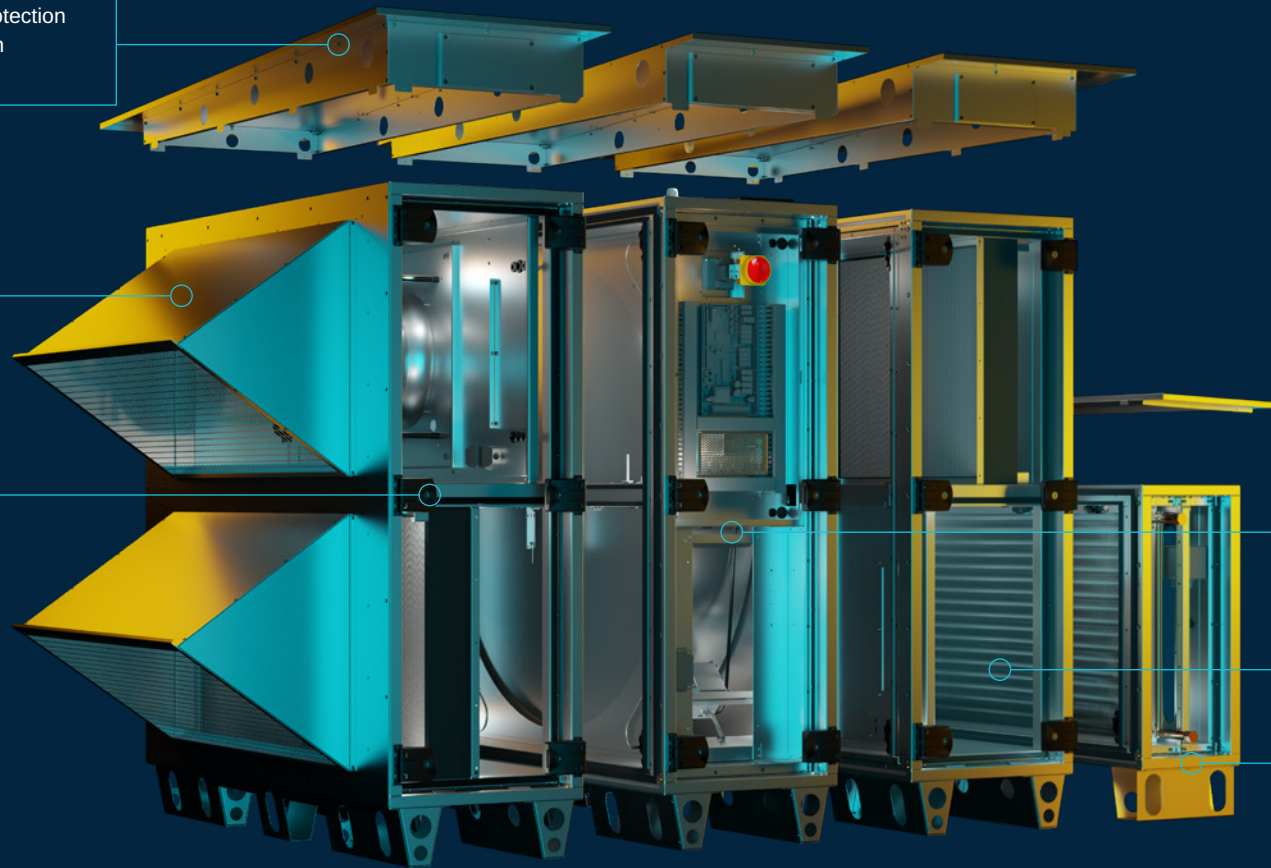
Our ROTO K air handling units have many practical functions. The divisibility enables easy handling during installation and maintenance, which saves time and resources. Rain cover and weather protection hood are available for outdoor installation. The integrated rotary heat exchanger ensures highly efficient heat recovery and thus reduces energy costs.

## DIVISIBLE COMPACT AIR HANDLING UNITS WITH ROTARY HEAT EXCHANGER

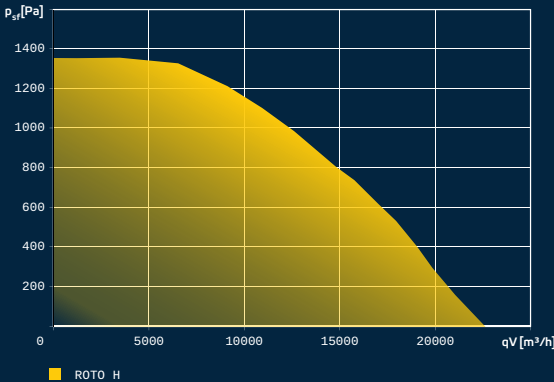
Housing	Frameless double-wall housing made of galvanised sheet steel
Air performance	up to 20.000 m³/h
Insulation	50 mm non-combustible mineral wool
Heat exchanger	High-efficiency aluminium rotary heat exchangers with Eurovent certification
EC-fans	Efficiency-optimised backward-curved centrifugal impellers with EC external rotor motor
Plug & Play	Pre-wired, pre-configured and factory tested
Maintenance	Large doors for easy access to all components, opening on both sides and detachable
Night cooling	Adjustable rotation speed of the rotary heat exchanger for night cooling in summer

Rain cover and weather protection hood for outdoor installation (optional)

Fan - filter module



Air flow rate



Heat recovery and control module, optimum accessibility to all components is ensured by the large, removable doors

Fan - filter module

Heating / cooling module

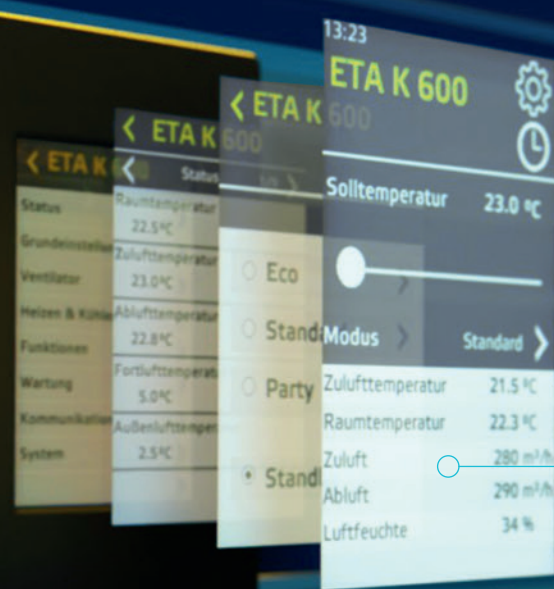
Exemplary representation:  
ROTO K H T with optional accessories

## THE PERFECT MATCH FOR APP-SOLUTE EASE OF USE

The controls of the ROTO air handling units, including sensors and actuators, is integrated and fully wired in the unit. All devices are commissioned and tested in advance at the factory. We supply the appliances with four predefined operating modes so that they can be used immediately after connection: Eco, Night, Comfort and Party. The desired operating parameters can be easily set to individual requirements on the touch control unit supplied or optionally in the app.



- Contains all functions of the control unit
- Control any number of air handling units remotely
- Monitoring of all operating parameters
- Commissioning of the devices possible via app



- Extensive setting options through smart schedules
- Preconfigured modes for quick and easy commissioning
- Digital temperature / humidity sensor integrated in the control unit

### IT'S A MATCH!



IF EVERYTHING MATCHES,  
THEN IT'S RUCK

- M** Highly efficient EC motors
- A** Coordinated components to reduce the energy requirement
- T** Flexible design with web-based software
- C** Newly developed control system with four preset operating modes
- H** Device and accessories: everything from a single source, everything under control



# ALL DATA AT A GLANCE

Name	Mounting	Nominal volume flow [m³/h]	Insulation thickness [mm]	Max. power consumption [W]	Weight [kg]	Outdoor installation
ROTO K 1050 H/V	Floor	1.150	50/40	760	206/210	Yes/No
ROTO K 1700 H/V	Floor	1.800	50/40	1.500/1.600	245/250	Yes/No
ROTO K 2800 H/V	Floor	3.000	50/40	2.300/2.400	325/365	Yes/No
ROTO K 4200 V	Floor	5.000	40	3.000	480 (*)	No
ROTO K 5000 H T	Floor	5.000	50	3.500	550 (*)	Yes
ROTO K 7600 H T	Floor	8.000	50	6.000	700 (*)	Yes
ROTO K 12600 H T	Floor	12.000	50	7.000	880 (*)	Yes
ROTO K 20000 H T	Floor	20.000	50	12.000	1.250 (*)	Yes

(\*) Weight specifications refer to base unit without heating / cooling modules

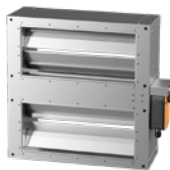
# ACCESSORIES



Duct connector



Electric heating module



Motorized shut-off flap



Duct smoke sensor



Differential pressure sensor



Vacuum siphon



Weather protection hood



Motorized shut-off flap



Rain cover



CO2 Sensor



3-way ball-valve



Duct temperature sensor



## CONTACT

---

**ruck Ventilatoren GmbH**

Max-Planck-Straße 5  
D-97944 Boxberg

**Tel.** +49 7930 9211-300  
**[www.ruck.eu](http://www.ruck.eu) | [sales@ruck.eu](mailto:sales@ruck.eu)**