




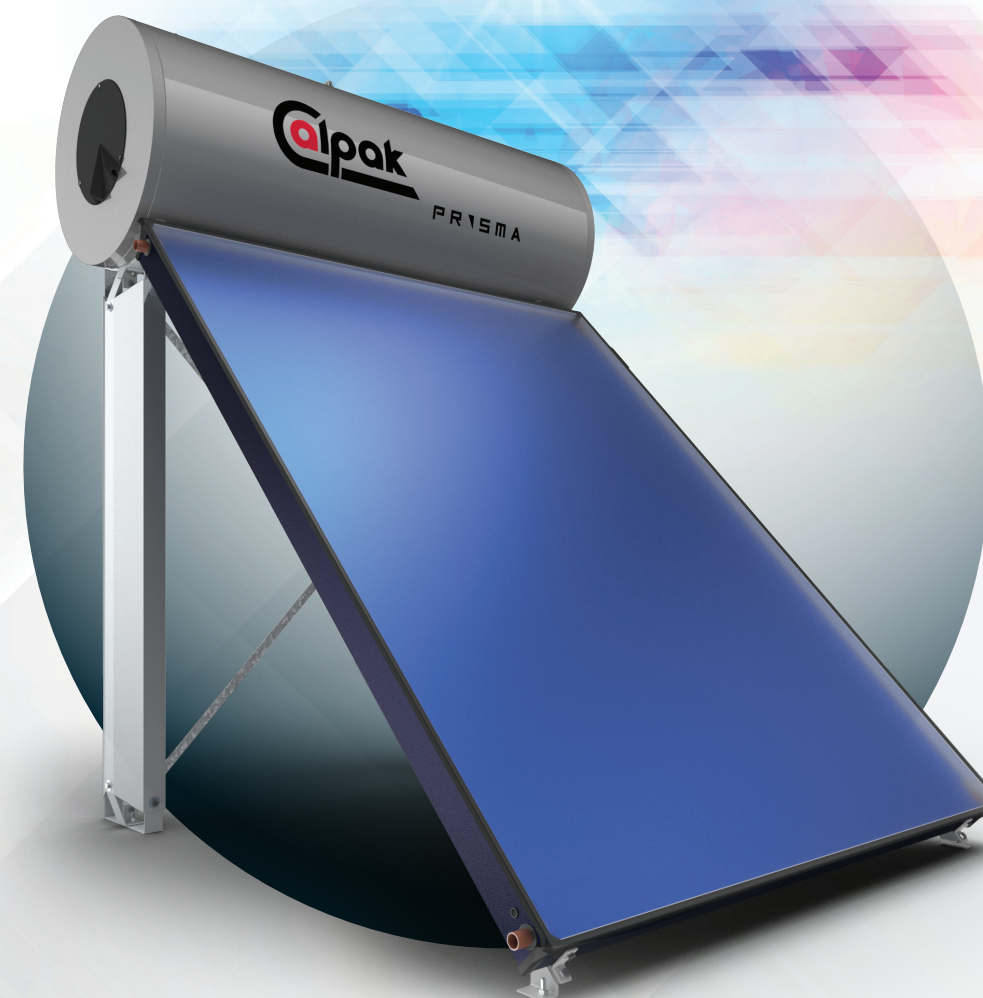
Prisma® Technical Features

	160/2.0	200/2.0	200/2.5	300/4	300/5
	3-4 people	4 people	5 people	6-7 people	8-9 people
Collector					
area (m²)	2	2	2.5	4	5
optical efficiency / heat loss coefficient	$\eta_0 = 78\% / \alpha_1 = 2.99 \text{ W/m}^2\text{K}$				
maximum output	1524 W	1524 W	1905 W	3048 W	3810 W
absorber	high selective - full plate - laser welded				
frame	colofast® (BASF® patented) & zinc coated alloy steel by Arcelor-Mittal				
insulation	glass wool 30mm				
glass	tempered 3.2mm (safety), low-iron (transparency >91.5%)				
Tank					
capacity (lt)	151	192	192	295	295
jacket heat exchanger surface (m²)	0.98	1.38	1.38	2.01	2.01
tank material	steel DC-03 2.5mm by Arcelor-Mittal (according to DIN 10130)				
welding method / test	robotics using artificial intelligence / double test at 15bar				
anti-corrosion / cathodic protection	direct enameling (according to DIN 4753/3) / magnesium rod (according to DIN 4753/6)				
antifreeze protection	Calpak Nox (pharmaceutical polypropylene glycol)				
insulation	Injected ecological polyurethane foam (43 kg/m³ density and 50mm thickness)				
electrical resistance	3.5 KW inox (or less)				
connection to boiler	in triple energy models (trien)				
Certifications					
Quality			Test Labs		
					



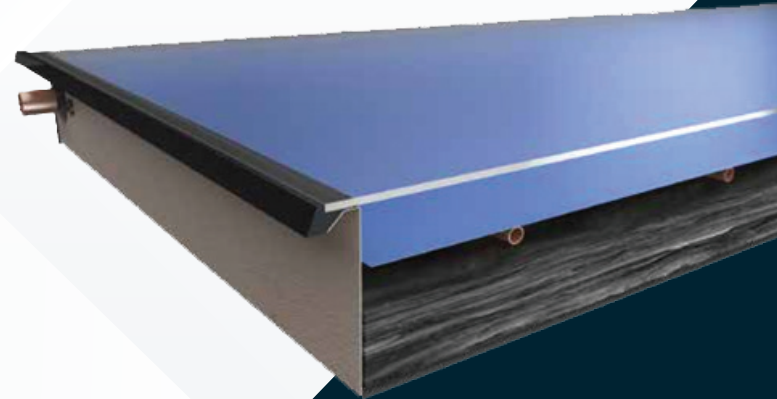
Technology & Quality
through a new prism

PRISMA



Calpak Prisma®

An innovative, high-tech collector that takes solar water heaters to the new era!



The creation of Prisma® collector makes all of us, at Calpak, very proud. It is an innovative collector that stands out for its technology and manufacturing qualities.

Prisma's smart production platform is fully automated with **new robotic systems** that are centrally controlled through **5G technology** and **AI algorithms**. It is acknowledged as one of the most advanced solar thermal production platforms in Europe.

The truly resilient water tank combined with the high performing Prisma collector®, ensure **an efficient solar water heater** that will deliver ample hot water for many years.

Make the smart choice and enjoy excellent performance and high energy savings!



What is the Prisma® collector?

It's an **innovative**, high-tech collector.

What makes it innovative?

The polymeric material Colofast® (BASF®) that is used in its production; a world first achievement.

Where has the Colofast® material been applied to date?

It has been used by the **biggest automobile manufacturers** in the world for the manufacturing of the car sunroofs.

What are its features and what value does it offer to the Prisma® collector?

- ▶ **Perfect adhesion** with glass and metal, which makes it ideal for their strong bonding
- ▶ **Great torsional rigidity** and, therefore, robustness throughout the structure
- ▶ **Absolute waterproofing**
- ▶ **Perfect finish**

How is the Prisma® collector produced in the Calpak factory?

It is produced by a **fully automated production line**, which includes **5 robotic arms** and high-tech machines.

What are the benefits of an automated production line?

It ensures **absolute standardization** of the production process and, therefore, the assurance of high quality.



reddot design award
winner 2023

