

“Temperature-Controlled Building”  
Silent Central Air Conditioning

Customizable Dimensions , Modular Construction

menred

Anti-Mold Calcium Silicate Board Surface Layer

Thickness 10 mm, Low Thermal Resistance  
and High Thermal Conductivity

PE-Xa 10x1.2 5-Layer Oxygen Barrier Pipe

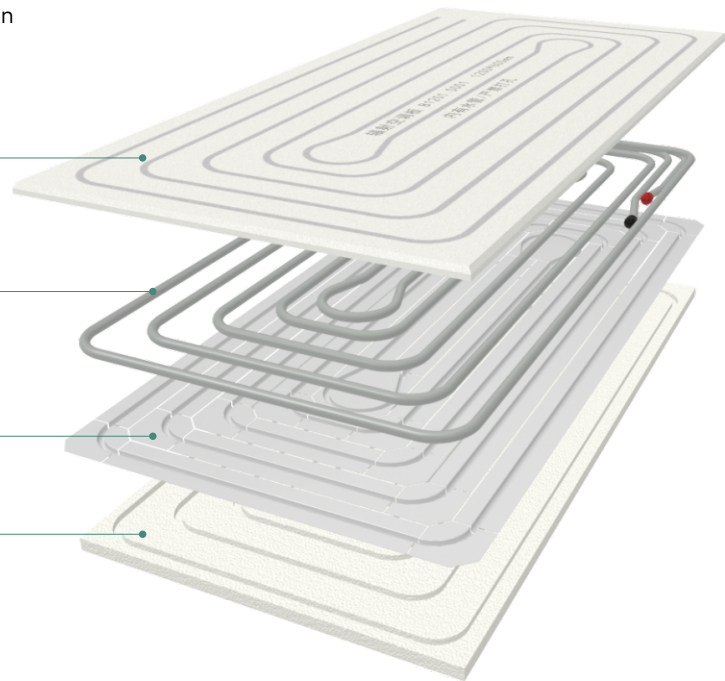
Anti-Oxygen Permeation,  
Using Memory Ring Connection Technology

Ω-Coated Thick Aluminum  
Heat-Conductive Base Layer

Ensuring Uniform Surface Temperature

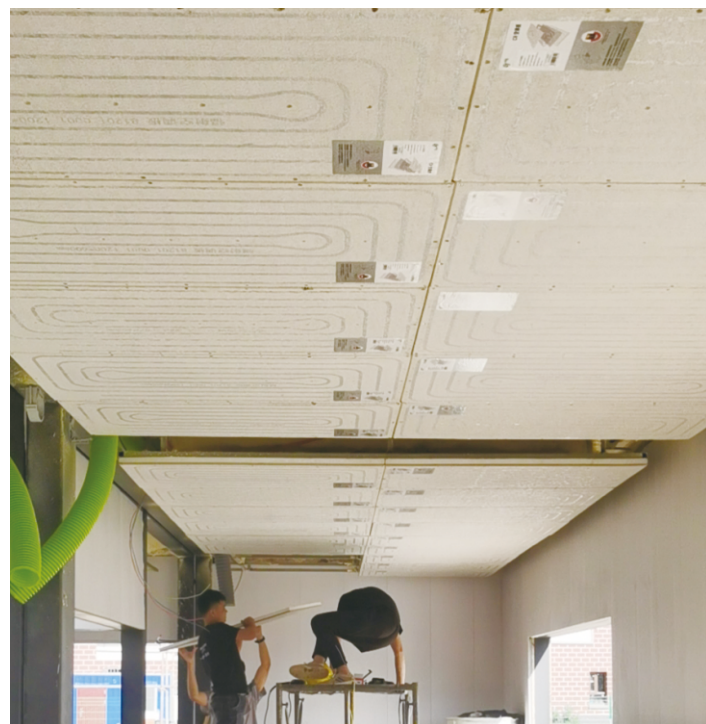
Environmentally Friendly Insulation Board

Thickness 25 mm, Zero Formaldehyde



Natural Heat Exchange Silent Air Conditioning Board

Model	Specifications	Dimensions
Li120x60	CR Air Conditioning Board	1200mmx600mm
Li130x60		1300mmx600mm
Li140x60		1400mmx600mm
Li150x60		1500mmx600mm
Li160x60		1600mmx600mm
Li180x60		1800mmx600mm
Lixx60		Customized, lamp hole position
CS120x60	Calcium silicate blind flange	1200mmx600mm



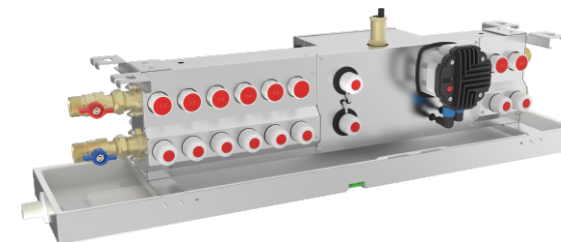
www.menred.com

menred

# HVAC Specialists

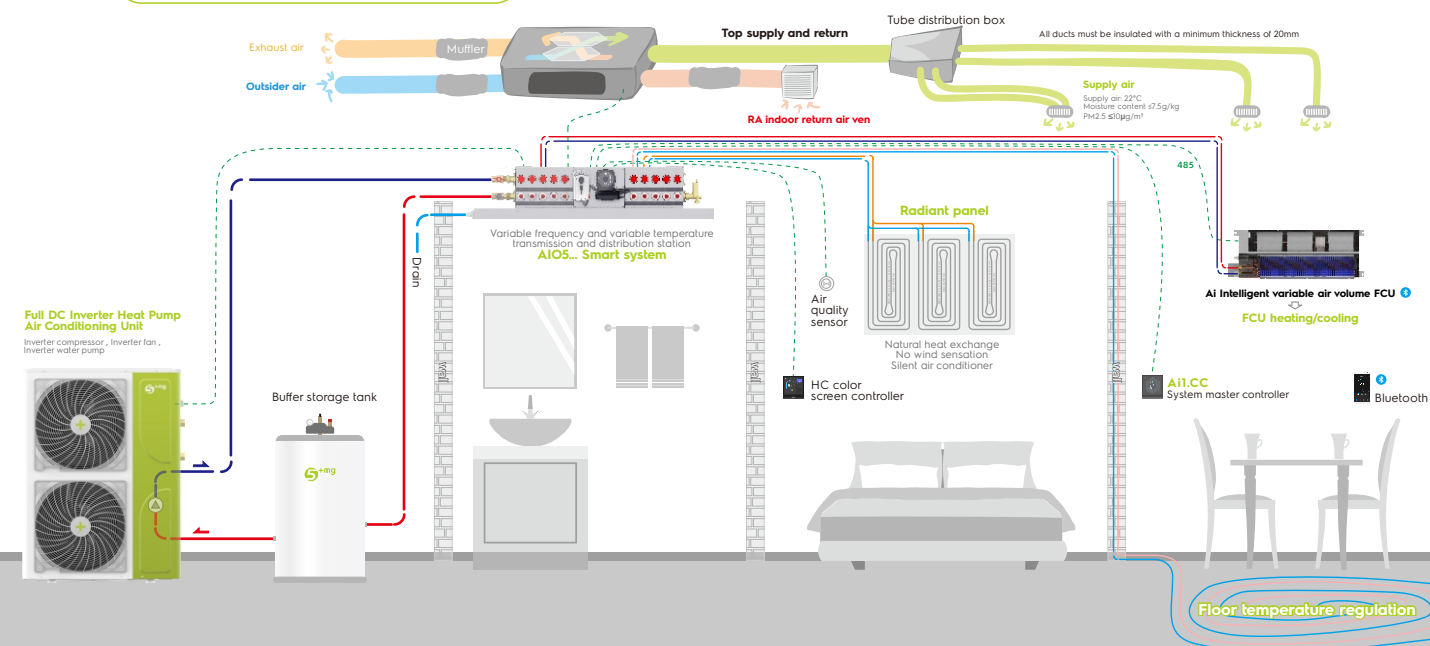


## Variable Frequency and Temperature AI IoT Distribution Station



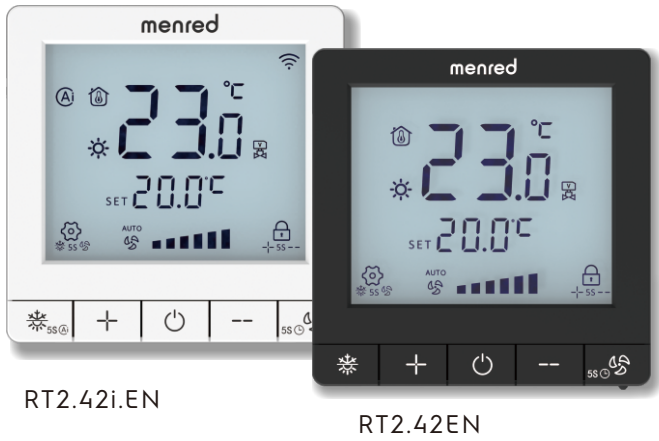
- Variable Water Temperature Dew Point Tracking
- Switzerland EMS Copper Plastic Composite
- EPP Insulation and Anti-scaling Adjustment
- Equipped with AIO Smart Home System and Open Technology Platform
- Default Left Side Connection to Main Pipeline
- Can be Changed to Right Side On-Site

### 5+mg AIO HVAC SYSTEM





RT2.42... FCU thermostat

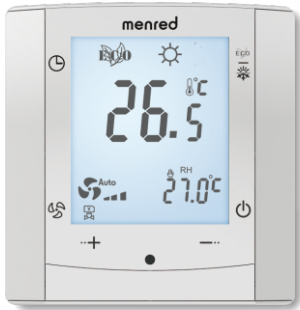


- **One button control**  
Cooling/heating modes
- **4-gear fan speed**  
Auto/high/medium/low
- **Modbus**  
Support whole house smart integration
- **Child lock**  
Avoid misoperation

Technical data	
Input Voltage	Nominal AC220V(Support AC85-265V)
Load current	2A(resistive loads) 1A(inductive load)
Setting range	5~35°C
Ambient temperature	-10~55°C
WiFi	2.4G/5G/Bluetooth

LS7...  
FCU Thermostats  
with LCD

- Easy mounting
- Large LCD display
- Temperature humidity from Switzerland
- Rotating temperature sensor
- Low power consumption
- ECO mode



Technical data	
Voltage	AC230V 50Hz
Load curren	2A (resistive loads) 1A (inductive load)
Power consumption	< 1 W
Terminal	A single terminal can max connect two 1.5 mm² or one 2.5 mm² wires
Setting range	5 ~ 35°C
Ambient temperature	-10°C~55°C
Protective housing	IP20



LS8.42...  
FCU Thermostats  
with LCD

LS8...thermostats are designed for controlling speed fan and an on/off valve actuator in 2-pipe FCU system, to meet up the adjusted indoor temperature.

Technical data	
Voltage	AC220V
Max. output voltage	≤Imax3A
Power consumption	≤1.5W
Measured range	-9.5~99.5°C
Setting range	5~35°C
Ambient temperature	-10~55°C
Protection class	IP20
RS485 communication	Modbus standard protocol



About us

SEH35... Electro-thermal Actuator



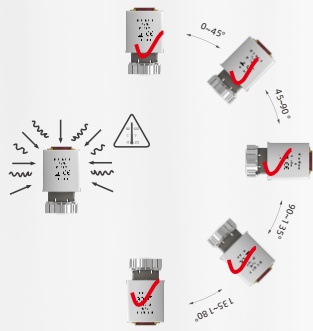
- Wax element, PTC heating to start
- spring re-set function,the valve close or open when power off(normal closed and normal open)
- Noise-free operation
- Position indicator on actuator
- Nut connects for install and dismantling easy
- Normal closed factory setting is open that is easy to water pressure testing (It will return to normal after the first power on connecting)

Technical data	
Voltage	230V/220V , AC24V, 110V
Power consumption	2W
Force	110N
Stroke	3mm
Running time	180s
Valve interface	Cap nut M30×1.5mm
Ambient temperature	5°C~50°C
Cable Length	900mm
Housing material	PC+GF10
Protective housing	±45°C IP43, 45°C...90°C IP41

CM20...  
Electro-thermal  
Actuator



Installation Positions

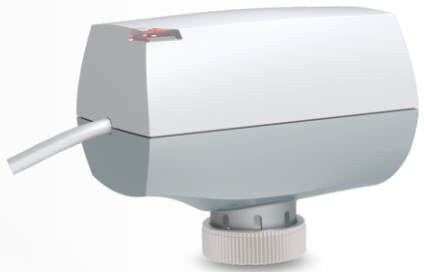


Technical data	
Voltage	AC 220V,AC/DC 24V
Force	100N
Stoke	11~15mm
Power consumption	≤2.5W
Version	Normally Closed (NC)
Open/Close time	~ 3mins
Mechanical connection	M30 x 1.5 mm
Ambient temperature	-5~50°C
Cable Length	800mm
Housing material	Flame retardant PC
Protection degree	IP56

SEA23...  
Electric Actuator

- Power on prompt function. The indicator lights up when power on and lights off when power off
- No working noise
- Nut connection mode, simple, fast and easy disassembly

Technical data	
Actuator stroke	4.5mm
Closing and opening time	<20s
Valve interface	M30x1.5mm
Ambient temperature	-5~50°C
Cable length	900mm
Housing material	PC
Protection class	IP52



VEI46...  
2-port Internal Threaded Valve



- Hot-stamped brass valve body
- Internally threaded connections
- Hard sealing disc
- Manual adjuster
- Can be fitted with motorized actuator(SEA21...) or electro-thermal actuators(SEH35...)

Technical data	
Operating pressure	PN16
Valve characteristic	Linear
Stroke	2.5mm
Leakage rate	(2-port)path A→AB 0...0.05% of Kvs
Medium temperature	0...110°C
Valve body	Brass
Stem	Stainless steel
Plug,Seat,Gland	Brass
Stem seal	EPDM O-ring

VSI46...  
3-port Internal Threaded  
Small Valve



- Hot-stamped brass valve body
- Internally threaded connections
- Hard sealing disc
- Manual adjuster
- Can be fitted with motorized actuator(SEA21...) or electro-thermal actuators(SEH35...)

Technical data	
Operating pressure	PN16
Valve characteristic	Linear
Stroke	2.5mm
Leakage rate	(3-port)Path A→AB 0...0.05% of Kvs Bypass AB→B Max.2...5% of Kvs
Medium temperature	0...110°C
Valve body	Brass
Stem	Stainless steel
Plug,Seat,Gland	Brass
Stem seal	EPDM O-ring