

Central ventilation system Fill your home with natural breeze !

German EC fans, with ultra-long lifespan and ultra-low noise.
German CNC sheet metal processing equipment, highly precise and custom-made.
Coated aluminum-zinc steel plate,
providing complete anti-corrosion for over 30 years.

Built-in PM2.5 filter, ensuring over 96% efficient removal of haze.
Full heat recovery system, highly efficient and energy-saving.
Certified by national authentication testing equipment.



SMART O2 G5 VENTILATOR

Every Breath is Fresh Air



EC Frequency Conversion
Induction speed control
Low noise
Germany EBM double inlet centrifugal fan



Double-core structure
Reduced wind resistance
Energy efficiency improvement
USA DAIS membrane full-heat exchange core



High efficiency filter
Putting "N95" on the house
One material filtered twice



Four operating modes
Switch as you like for more comfort
New intelligent control method



**Whole house 360°
air purification**
Ultimate sound deadening
Deflected noise duct | Parabolic flow



Whole machine insulation
**Thermal insulation and
vibration damping more fluid**
EPP environmental protection material air duct design

4-Layer filters blocking

Micro electrostatic IFD patented purification technology

PM2.5 purification efficiency 99.99%

Sterilization efficiency 99%

The use of new technology of physical sterilization,
strict control of the amount of ozone generation.

4

IFDElectrostatic dust collection module (optional)

Pre-charged moving dust particles are almost 100% adsorbed by the
extremely strong electric field forces in the honeycomb dust collection area.
Recommendation: Replace every 6 months

3

**High-voltage field electric module
(electrode needle corona discharge) (optional)**

Airborne motion dust particles are recharged in the plasma
to complete bacterial and viral inactivation simultaneously.
Recommendation: Replace every 6 months

2

**High efficiency filter
PM2.5 Highly efficient PM2.5 filtration**

4.5°V angle, 92 folds, unfolded length up to 11960mm
Recommendation: Replace every 6 months

1

**Cartridge coarse filter to
block PM10 or more particles**

200 fold, unfolded area up to 1.5m²
Recommendation: Replace every 6 months

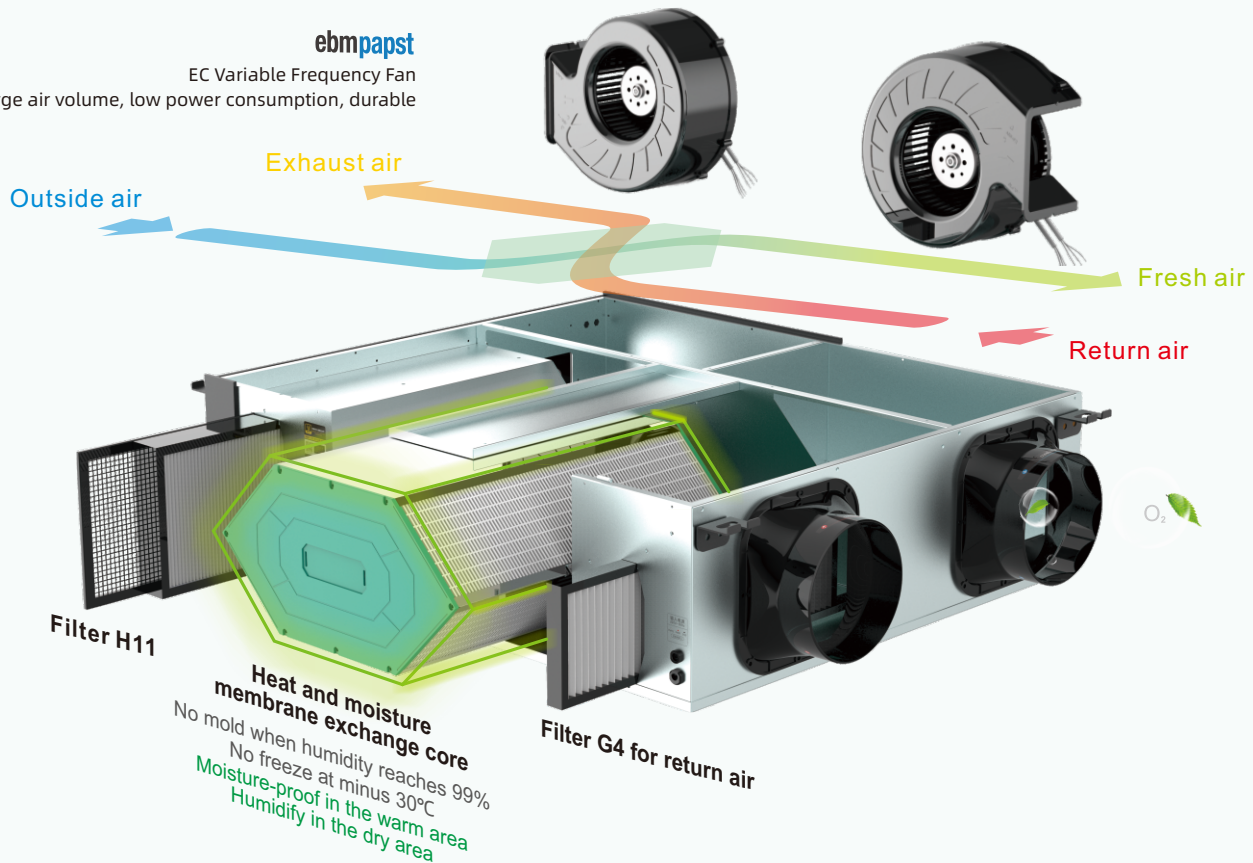
Model	Power (V/Hz)	Air volume (m³/h)	Consumption (W)	Noise (dB(A))	Weight (kg)	Filter model
G5	220~50	500	135	43.9	65	F1121 F1122 F1123



The breeze comes, enjoy free breathe

Total Heat Exchange Ventilator

ebmpapst
EC Variable Frequency Fan
Large air volume, low power consumption, durable

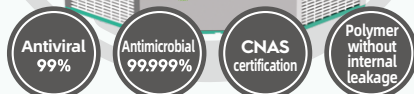
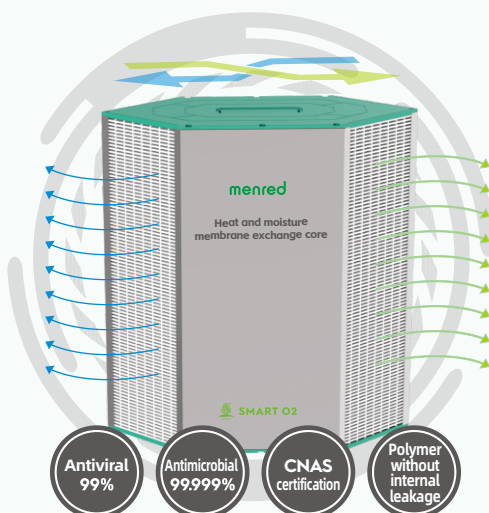


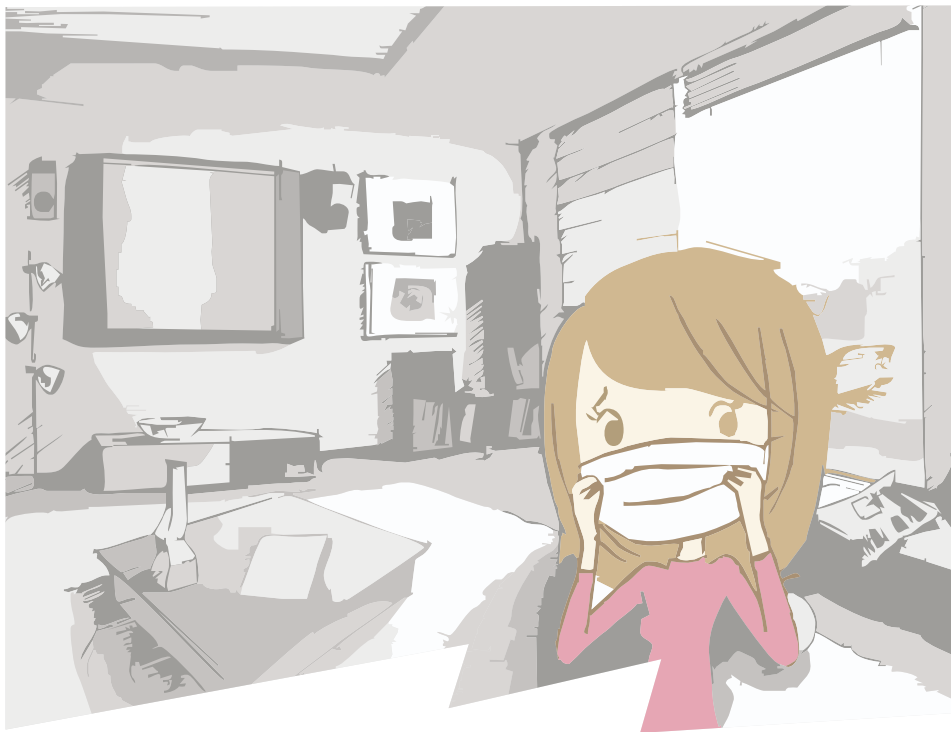
Heat and Moisture Membrane Exchange Core

Virus particle diameter: 70-200nm
Bacterial particle diameter: 300-3000nm

Test report No.: 2018FM04500R01

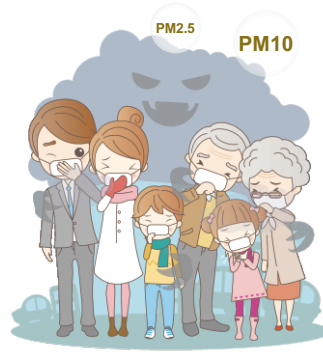
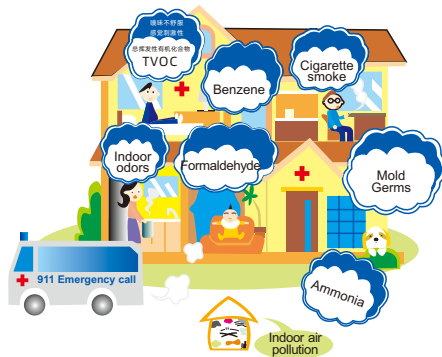
No paper core | Antimicrobial
Nonporous membrane | No air leakage
No cross contamination





Is the air in your home clean enough?

When the concentration of carbon dioxide in indoor air is between 350-450ppm, it is the same as the general outdoor environment;
When the concentration is 350-1000ppm, the air is fresh and the breathing is smooth;
When the concentration is 1000-2000ppm, people will feel the air is cloudy and start to feel drowsy;
When the concentration reaches 2000-5000ppm, people will feel headache, drowsiness, sluggishness, inability to concentrate, rapid heartbeat and mild nausea;
when the carbon dioxide content reaches 5000 or more, it may lead to serious lack of oxygen and cause permanent brain damage, coma and even death.



Particulate state air pollutants

Pm10 is particulate matter less than 10 μm in diameter suspended in the air, also known as respirable particulate matter, formed by the interaction of nitrogen oxides, sulfur oxides, volatile organic compounds and other compounds in the ambient air.

PM2.5 refers to air suspended particles less than or equal to 2.5 μm in diameter, also known as lungable particulate matter, formed by the interaction of a large number of toxic and harmful substances in the ambient air (including viruses, bacteria, heavy metals, pollen, etc.), which can be constantly adsorbed in the long-distance transmission process of man-made pollutants, increasing the toxicity of particulate matter.

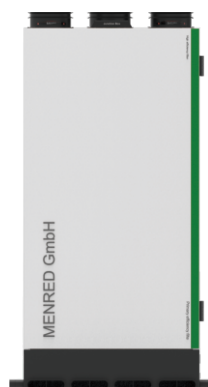
G Serial Ventilator *New*

G6 Total Ventilation Air Conditioning Unit



Power	220V~ 50Hz
Rated air volume	350m ³ /h
Rated power	130W
Cooling Enthalpy Exchange Efficiency	67%
Heating Enthalpy Exchange Efficiency	72%
Cooling power	1388W
Cooling EER	4.62
Heating power	1617W
Heating EER	3.16
Filtration efficiency	99.8%
Rated noise	39dB(A)
Weight	87kg
Reheat dehumidification capacity	3.2kg/h

G4 Total Heat Exchange Ventilator



Power	220V~ 50Hz
Rated air volume	350m ³ /h
Rated power	130W
Filtration efficiency	99.2%
Rated noise	37dB(A)
Weight	65kg
Filter model	F1127

G7 Total Heat Exchange Ventilator



Power	220V~ 50Hz
Rated air volume	350m ³ /h
Rated power	130W
Filtration efficiency	98%
Rated noise	39dB(A)
Weight	57kg
Filter model	F1129

G2 Cassette Type Dehumidifier



Power	220V~ 50Hz
Rated air volume	300m ³ /h
Rated power	850W
Rated noise	38dB(A)
Weight	60kg
Filter model	F1126
Capacity	60L/24h(30°C/80%RH) 39L/24h(27°C/60%RH)

G9 All-in-one Integrated Unit



Hydraulic system	
Cooling capacity	5.023kw
Cooling consumption power	1.312kw
Cooling EER	3.83
Heating capacity of heat pump	6.051kw
Heating consumption power	1.627kw
Heating COP	3.72

Refrigerant system	
Heating capacity (Hot water)	3.76kw
Heating COP(Hot water)	4
Dehumidification capacity	2.73kg/h
Dehumidification consumption power	1.19kw
Heating capacity (air side)	4.77kw
Heating energy efficiency	4.08
Cooling capacity (air side)	6.42kw
Cooling energy efficiency	5.27
Cooling recovery condition (single open)	2702kw
Heat recovery condition (single open)	2324kw
Rated air volume	350m ³ /h

Note
Hydraulic system: GB/T 18430.22-2016
Refrigerant system: GB/T 40438-2021
GB/T 23137-2020

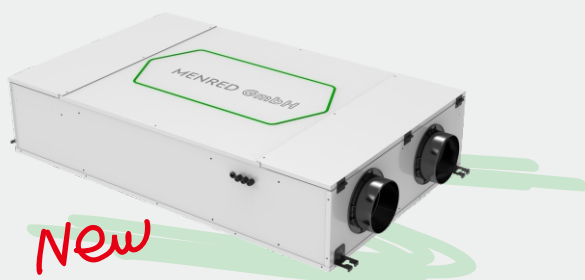
IEC5.350E Energy recovery ventilator



Model	IEC5.350E(PHI)	IEC5.350E(GB)
Power supply	220V ~ 50Hz	
Air volume (m³/h)	350/250/150	
Max. power (W)	180	
Working condition power(W)	150(100Pa)	—
Noise (dB(A))	36/29/23	
Weight (kg)	35	
Filter model	F1118	

- > One-piece EPP structure, same material as limousines bumpers, with excellent shock resistance, high deformation recovery rate, good heat resistance and heat insulation. This material is tasteless, non-toxic and recyclable. It is an environmentally friendly material with excellent performance.
- > U.S. made HV filter materials with 99% PM2.5 filtration efficiency, providing users with fresh and clean outdoor air. Trichoderma, aspergillus niger, chaetomium globosum and penicillium pinophilum cannot grow in the filter through ISO 846 B test.
- > Germany Ebm-papst EC centrifugal fans with forward-curved blades ensures long distance air delivery with steady flow, high wind pressure and minimal noise. The machine's rated air volume is 350m³/h, while its maximum air volume can reach to 500m³/h. Through advanced settings, air pressure can be adjusted from 0-200Pa.
- > The machine is available with either an LCD controller LS7.33+Wi-Fi or a colorized controller CLS4.0S. They both have elegant and fashionable appearance. There are several operation modes with various functions such as timing and filter life prompt. It's simple to use. In addition, the controller can monitor air quality in real time. The purification effect is clear at a glance.
- > The ERV core is completely washable, and there is no internal leakage. The air exchange rate exceeds 99%. There is no cross-contamination or condensation between the outdoor and exhaust air. And no drainage device is required. Such antibacterial material is simple to maintain. In summer, ERV core reduces at least 60KG of water vapor from entering the room while in air conditioning mode (GB/T21087-2007) .

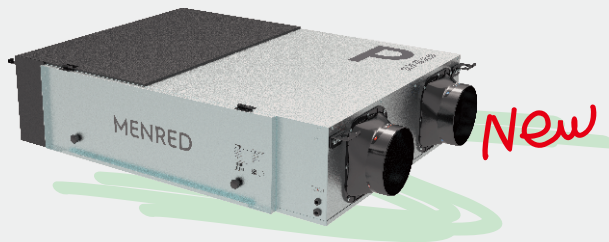
IEC8.250E Dual By-pass Full Heat Ventilator



- > Dual damper channels for unobstructed air flow
- > Double exchange to improve heat exchange efficiency
- > Dual EC fans with constant flow rate
- > 93.3% Bi-directional bypass rate, directly sends cool outdoor air into the room

Model	IEC8.250E
Power supply	220V ~ 50Hz
Rated air volume (m³/h)	250
Supply air volume (m³/h)	245
Filtration efficiency(%)	97.5
Rated power (W)	110
Supply air external residual pressure(Pa)	80
Noise (dB(A))	37
Weight (kg)	45
Size(mm)	1195 x 735 x 250
Protection level	IPX2
Cooling enthalpy efficiency(%)	72
Heating enthalpy efficiency(%)	79
Power consumption per air volume (W(m³/h))	0.41

P5 Energy recovery ventilator



- > Sub-high efficient filter, effectively filtering PM2.5.
- > Germany Ebm-papst dual DC variable frequency motor, noise as low as 38 decibels, low power consumption, strong power and energy saving.
- > ERV core, using nano membrane as the core material, is completely washable. It can retain moisture in winter and remove excess moisture from the air in summer.
- > The machine is available with either an LCD controller RT1.2 or a colorized controller CLS4.0E. There are several operating modes with various functions such as timing and filter life prompt. It's simple to use. In addition, the controller can monitor air quality in real time. The data can also be accessed and adjusted via mobile phone by downloading Tuya Smart App.

Model	Power supply	Max. air volume (m³/h)	Max. power (W)	Rated air volume (m³/h)	Rated power (W)	Filtration efficiency (%)	Noise (dB(A))	Weight (kg)
P5	220V~50Hz	450	220	350	135	97	38	33
	Supply air external residual pressure (Pa)	Exhaust air external residual pressure (Pa)	Cooling enthalpy efficiency (%)	Heating enthalpy efficiency (%)	Supply air volume (m³/h)	Supply air purification rate (%)	Power consumption per air volume (W/(m³/h))	
	80*	50*	69	77	340	97	0.385	

*: External residual pressure can be set in the controller

S5 Energy recovery ventilator



- > Germany EBM DC variable-frequency fan, infinite variable speed, ultra-low energy consumption.
- > Exchange core, washable, no leakage, the effective ventilation rate reaches 99%.
- > S5 can be equipped with digital display RT1.2 WiFi, color screen CLS4.0E, control and operation mode with timing, filter life reminder and other functions.
- > The operation of the ventilator can be controlled remotely through the mobile APP.

Model	Power supply	Rated air volume (m³/h)	Rated Consumption (W)	Filtration efficiency (%)	Noise (dB(A))	Weight (kg)	Filter model
S5	220V ~ 50Hz	350	165	99	39.5	30	F1131

RC1.350E Energy recovery ventilator



- > Germany EBM DC variable-frequency fan, infinite variable speed, ultra-low energy consumption.
- > Energy exchange core+ sub-high efficiency filter, efficiently filter PM2.5.
- > Muffling design, Ultra-quiet operation.
- > More convenient to maintain Filter.

Model	Power supply	Rated air volume (m³/h)	Rated Consumption (W)	Filtration efficiency (%)	Noise (dB(A))	Weight (kg)	Filter model
RC1.350E	220V ~ 50Hz	350	130	98	39.8	28	F1128

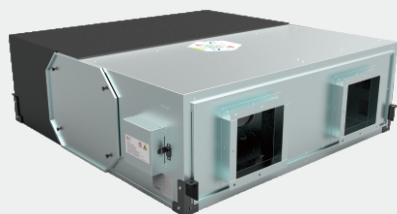
RC2.350E Full Heat Ventilator



- > Front door design for easy maintenance
- > Silent design for quiet operation
- > Full heat exchange, fearless of winter
- > Multi-layer filtration, cleanliness guard

Model	RC2.350E	Power supply	220V ~ 50Hz
Max. air volume (m³/h)	580	Max. power(W)	335
Rated air volume (m³/h)	350	Rated power (W)	98
Supply air external residual pressure (Pa)	80	Exhaust air external residual pressure (Pa)	50
Cooling enthalpy efficiency(%)	56	Heating enthalpy efficiency(%)	68
Supply air volume(m³/h)	346.5	Supply air purification rate(%)	99
Filtration efficiency(%)	99	Power consumption per air volume(W/(m³/h))	0.28
Noise(dB(A))	36	Weight (kg)	48

NET... Commercial ventilator

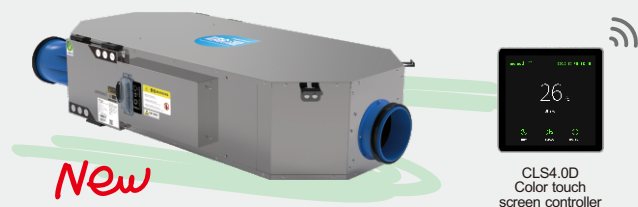


E51.33B

- > U.S. made filter material; pleated design greatly increases filter area and dust holding capacity, efficiently filtering PM2.5; rail type structure, easy filter replacement.
- > Double inlet fan with forward-curved blades, low noise, high static pressure, and high air volume.
- > Suitable for detachable integrated ceiling.

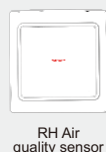
Model	Power supply	Air volume(m³/h)	Power(W)	Noise(dB(A))	Weight(kg)	Filter model
NET.800	220V ~ 50Hz	800/700/600	615/510/415	52/49/45	66	F021
NET.1000	220V ~ 50Hz	1000/800/600	540/505/490	54/52/45	69	F026
NET.1500	220V ~ 50Hz	1500/1200/1100	690/566/487	55/53/47	164	F029
NET.2000	220V ~ 50Hz	2000/1600/1200	1050/923/853	56/54/48	161	F044
NET.2500	220V ~ 50Hz	2500/2000/1500	1545/1190/957	57/55/49	201	F045
NET.3000	220V ~ 50Hz	3000/2300/1700	2000/1540/1160	58/56/49	220	F045

DEH90 Pro Dehumidifying ventilator



- > Using stainless steel plate, good corrosion resistance prolongs the lifetime of the ventilator.
- > Germany EBM DC Backward centrifugal Fan, low consumption, low noise, low vibration, long lifetime, high air volume.
- > The condenser light film has good thermal conductivity, light and thin texture, and excellent heat exchange capacity. The evaporator adopts titanium-plated gold film can fast evaporation temperature conduction and fast cooling speed. The surface of the peptide gold film is smooth and has a good water conduction effect.
- > H13 double filter, USA HV high efficiency filtration material, PM2.5 filter effective 99%.
- > Brand new drainage system, with built-in lift pump, 70 cm lift.
- > Using horizontal rotor compressor, compact, low noise, high energy efficiency and low vibration.
- > Patented air outlet design, 90 degree adjustable.
- > Built-in muffling cotton, compressor and EBM fan, effectively reduce the noise when the ventilator is running.

DEH40 Dehumidifying ventilator



- > The dehumidifying ventilator remove the mildew caused by the humid environment and meet the requirements of the dehumidifying demand in the humid environment and the rainy season. It has the functions of ventilation and purification, can meet the different requirements of customers.
- > Germany EBM fan, compact, low consumption, high efficiency, low noise, small vibration, long lifetime and high air volume.
- > Triple filters (coarse filter + high efficiency filter + activated carbon filter) filter PM2.5 efficiently while dehumidifying, effectively protect the fan and extend the lifetime of dehumidifying ventilator.
- > Color touch screen controller with temperature and humidity sensor, simple and clear operation, monitor air quality, purifying and dehumidifying effect at any time.

Model	Power supply	Max. air volume (m³/h)	Max. Ventilating Consumption (W)	Max. input Consumption (W)	Rated Consumption (W)	Max. Noise (dB(A))	Weight (kg)	Dehumidifying capacity	Filter model
DEH90 Pro	220V ~ 50Hz	400	80	1050 (30°C/80%RH)	845 (27°C/60%RH)	38.5	48	58L/24h (30°C/80%RH)	F203/F204
DEH40	220V ~ 50Hz	400	150	670 (30°C/80%RH)	—	42	34.5	35L/24h (30°C/80%RH)	F164/F162/F163

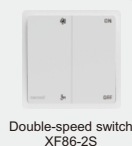
G3 Embedded ventilator



- > Germany EBM Forward centrifugal Fan, constant flow, high air pressure, low noise.
- > H13 double filter, USA HV high efficiency filtration material, PM2.5 filter efficiency 99%.
- > One-piece EPP Shell, heat resistant and heat-insulated, cold-resistant.
- > Compact, easy install, absorbing, flame retardant, safe without dangers.
- > It can be embedded into cabinet and wardrobes, more convenient to maintain filter.

Model	Power supply	Rated air volume (m³/h)	Rated Consumption (W)	Rated Noise (dB(A))	Max. air volume (m³/h)	Max. Consumption (W)	Weight (kg)	Filter model
G3	220V ~ 50Hz	210	98	39	320	210	19	F1116

RSM3.300D Air purification ventilator



Double-speed switch
XF86-2S

- > High air volume, low noise.
- > DC fan with high torque and variable speed control.
- > H13 filter with large dust holding capacity, effectively filtering PM2.5.
- > One-piece EPS material for the entire machine, efficient heat preservation.
- > More convenient to install and replace filters.

Model	Power supply (V/Hz)	Air volume (m³/h)	Power (W)	Noise (dB(A))	Weight (kg)	Filter model
RSM3.300D	220 ~ 50	300	88	37	9.3	F205

IT 90 Wall-mounted ventilator



- > Germany EBM fan, low noise, low consumption.
- > Energy recovery exchange core, energy-efficiency.
- > Triple physical adsorb PM2.5, haze removal filter.
- > 4 speed air volume for option, energy saving, low consumption.
- > For a room within 50m² or with no more than 3 persons.

Model	Power supply (V/Hz)	Max. air volume (m³/h)	Consumption (W)	Noise (dB(A))	Weight (kg)	Filter model
IT 90	220 ~ 50	90	30	37	23	F167 F166 F165 F168

Note: Above data is subject to change without notice. Specific please refer to product.

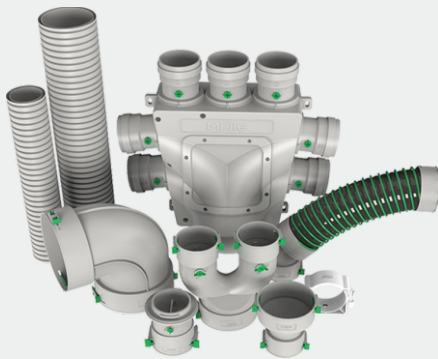
MELLe

MELLe Air Distribution System

E series corrugated pipe and accessories

Flexible link all-round upgrade

- High density Polyethylene
- Non-toxic environmental safety materials
- Silencing reduces noise, small Wind resistance
- Flexible link, easy installation
- One tube from beginning to the end, can not design
- There is no glue in system

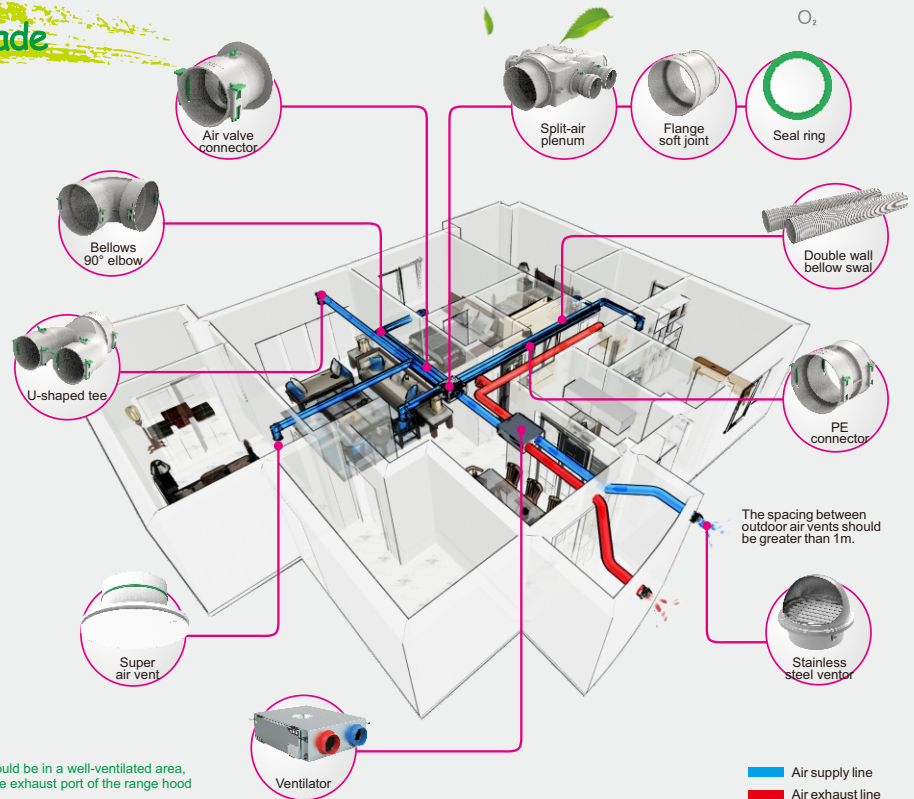


* References:
Air supply capacity of single tube approx. 30m³/h,
double tube 60m³/h.
Recommended for each length differences≤15%.

Notice:
The air intake should be in a well-ventilated area,
Do not go near the exhaust port of the range hood
and toilet.

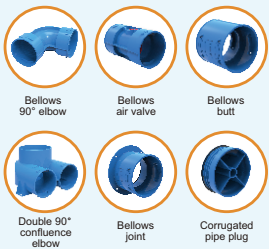
A Breathing House

Heat recovery Air replacement PM2.5 purification

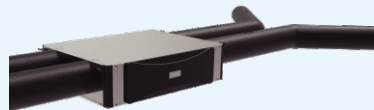
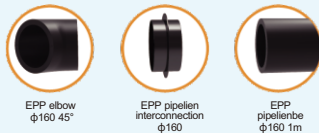


Ventilation System Air Pipe

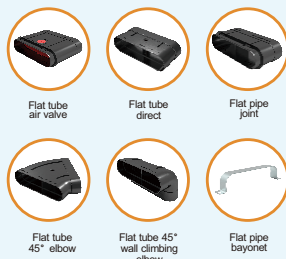
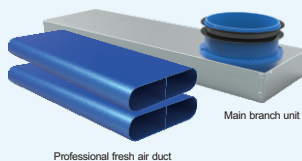
HDPE Double Wall Bellow Swal



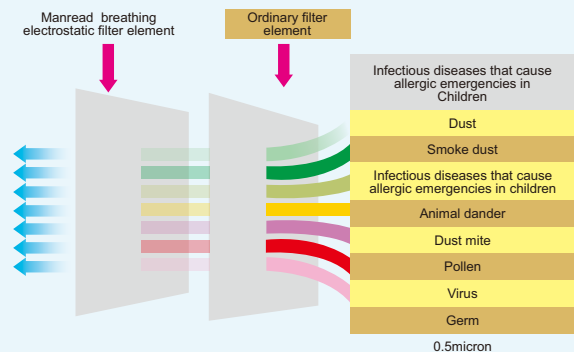
IEC5.350E Intelligent new fan special



F1301 Dedicated fresh air duct



High efficiency filtration P.M 2.5



Testing organizations:
National Control Console Equipment
Quality Supervision and Inspection Center