

WÖHLER

**FAST. SAFE.
COMPETENT.**



Wöhler BC 600 Blower Check

The all-in-one solution for your blower door measurement



Wöhler BC 600 Blower Check

Fully automatic airtightness check of the building envelope

The Wöhler BC 600 Blower Check allows for safe and efficient measurements. Thanks to state-of-the-art technology, you can trust in its accuracy. The Wöhler Blower Check App will guide you through the measurement process, ensuring precise results. Say goodbye to the hassle of changing orifices and converting the blower. Whether you're using one device in single mode or up to four devices in multimode*, it doesn't matter.

Installing one or more devices, along with the sealing film, is a breeze with the perfected clamp system. Even in challenging installation situations, you can securely attach them to windows or doors in just a few simple steps. If the door frame is missing, no worries! The film can be easily attached to the optional installation frame. With the fan automatically changing the direction of flow, you can carry out negative and positive pressure measurements one after the other, saving you time.

Control the system effortlessly through the Wöhler Blower Check App, available on Android, iOS, or Windows 10. All measurement data is transferred via WiFi, ensuring seamless connectivity. The app stores the measurement sequences specified in relevant standards, such as DIN EN ISO 9972 and DIN EN 13829. This allows the Wöhler BC 600 Blower Check to perform fully automated, standard-compliant measurements with speed and accuracy. This feature is especially beneficial for large buildings that require multiple devices.

If needed, you can still intervene manually at any time. Simply update the app to ensure long-term standard conformity after any changes to the standard. The app also conveniently stores all customer and measurement data, providing you with easy access to all the necessary information.



Easy to transport



Special clamp system



WiFi



Wöhler Blower Check App



Printout on site

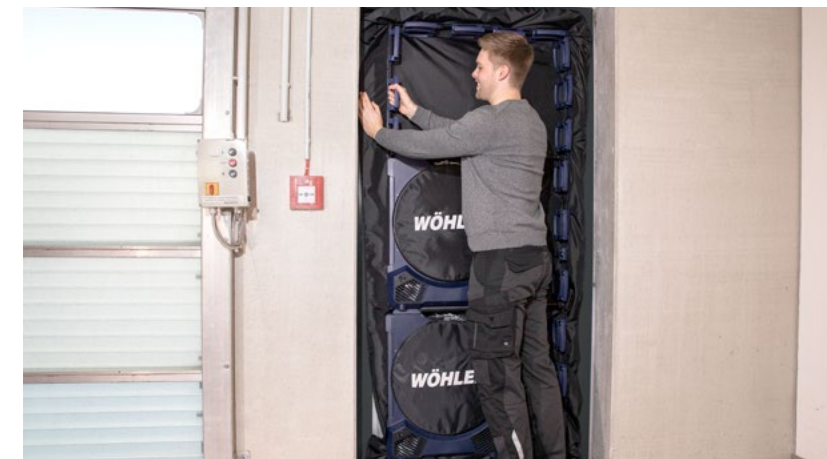


Door frame optional

*the Multimode can only be used with a router



You won't need an extra installation frame for typical installation scenarios (like window/balcony doors). It can also work for circular and angled openings, and more.



You can easily install one or two devices on windows and doors with our advanced clamp system. If you're missing window or door frames, you can also use an optional installation frame for added convenience.

Advantages

- ▶ Fully automatic measuring sequence in accordance with e.g. DIN EN ISO 9972 or DIN EN 13829
- ▶ Protective pressure measurement of small and large buildings
- ▶ Automatic change of direction of the fan for negative and positive pressure measurements, no conversion of the fan necessary
- ▶ Volume flow measurement range from 15 - 24,000 m³/h (with 4 devices) without changing the orifice plate
- ▶ Time-saving installation concept - no additional installation frame required for standard installation situations
- ▶ Installation in window frames means that the front door remains part of the leak test
- ▶ Integrated measurements of temperature, absolute pressure and relative humidity

>> Technical Data

Differential pressure

Measurement range:	-100...100 Pa
Display resolution:	0.1 Pa
Accuracy:	±0.25 Pa (< ±25.0 Pa) otherwise 1 % of measured value

Air flow rate at 50 Pa (extrapolated)

Measurement range:	15...24,000 m³/h (for up to 4 devices)
Display resolution:	0.1 m³/h
Accuracy:	±5 % or 1.5 m³/h (the higher value applies)

Air temperature

Measurement range:	-20...50 °C
Display resolution:	0.1 °C
Accuracy:	±0.5 °C

Absolute pressure

Measurement range:	300...1,200 hPa
Display resolution:	0.1 hPa
Accuracy:	±3 hPa

App

Supported operating systems:	Android (from version 7) iOS (from version 9.0) macOS (from version 11.0) Windows 10
Minimum requirement:	WiFi: 2.4 GHz

Application

- ▶ Blower door measurement to determine the air permeability of the building envelope in accordance with EnEV 2014 (German Energy Saving Ordinance) and GEG 2020 (German Building Energy Act) and in accordance with DIN EN ISO 9972 or DIN EN 13829 from passive house residential buildings to non-residential buildings
- ▶ Leak detection on the building envelope
- ▶ Proof of construction quality
- ▶ Protective pressure measurement according to DIN EN ISO 9972

Functionality

- ▶ Complete measurement, evaluation and documentation on site
- ▶ Installation in doors and windows with special installation concept for easy handling, even with two Wöhler BC 600s on top of each other
- ▶ Fully automatic standardised measuring procedure
- ▶ Positive and negative pressure measurement series at the touch of a button without turning the device
- ▶ Leak detection with intuitive operation directly on the device
- ▶ Large volumetric flow measuring range 15 m³/h to 24,000 m³/h (with 4 devices) without changing additional panels
- ▶ Simple protective pressure measurements for multiple sections with just one installation

Safety / Reliability

- ▶ Large measuring range
- ▶ Precise measurement with configurable measurement protocol
- ▶ Update possible at any time with just a few clicks

Data management

- ▶ Data transfer to the app via WiFi
- ▶ Save all customer and measurement data directly in the app

Special Features



Fully automatic measuring sequence in accordance with DIN EN ISO 9972 or DIN EN 13829 in the entire volume flow range from 15 - 24,000 m³/h (with 4 devices) without changing the measuring orifice and overpressure and underpressure measurements without fan conversion.



The fan unit is controlled via the Wöhler Blower Check App, which is simply downloaded to a smartphone, tablet or laptop (Android, iOS or Windows 10).

Wöhler Blower Check App

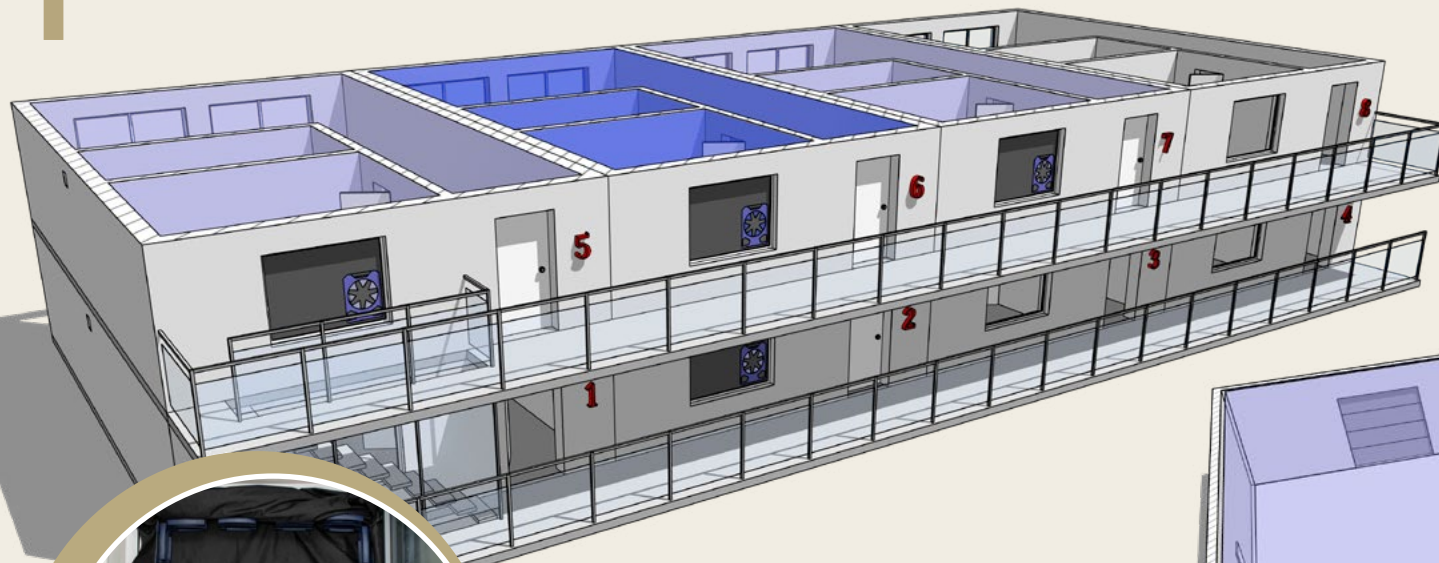
Only one smartphone, tablet or notebook with the app is required to control **up to 4 Wöhler BC 600s** simultaneously for all measurements.

- ▶ Platform-independent - compatible with Android, iOS or Windows 10
- ▶ Measurement procedure complies with the currently valid standards
- ▶ Simple creation of a test report with certificate in accordance with DIN EN ISO 9972 or DIN EN 13829 on site
- ▶ Conveniently send test report by e-mail or messenger service

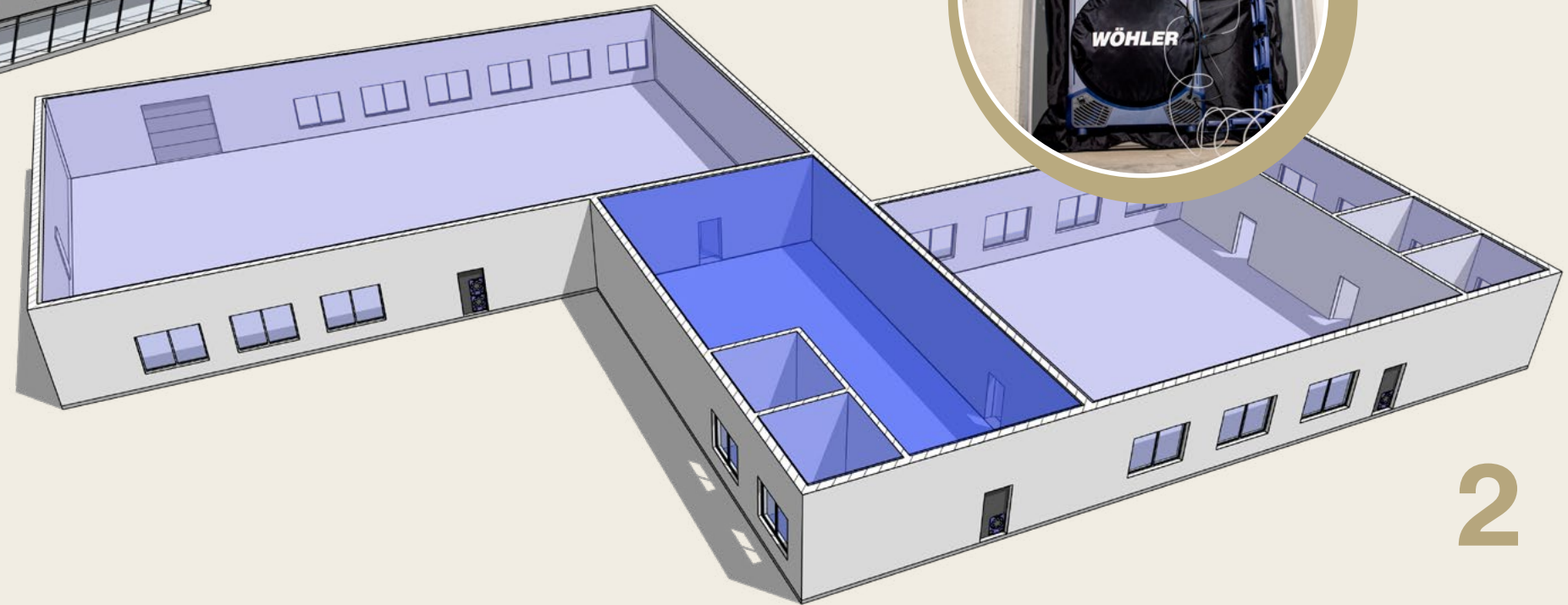


4x MORE POWER

1



- 1 Wöhler BC 600 installation in 4 windows of a residential building with balcony
- 2 Wöhler BC 600 installation in 3 doors of a commercial building



2

Protection zone Measuring zone

Protective pressure measurement with a click

Certain large building types require a section-by-section measurement according to DIN EN ISO 9972, including a protective pressure measurement. This method helps ensure that internal leaks are not mistakenly included in the evaluation of the building envelope. The Wöhler BC 600 Blower Check Multimode allows for quick and efficient measurements. Simply

assign the task to each device in the app with a click, eliminating the need for manual conversions.

Measure large buildings with power!

Blower door measurement can be quite challenging, especially for large buildings. However, with the Wöhler BC 600 Blower Check Multimode, this challenge can now be easily overcome. The entire measuring system can be controlled through a user-friendly app on your tablet, smartphone, or laptop. What's more, you can connect up to four Wöhler BC 600s to the app simultaneously. This means you only need to keep an eye on one device during the measurement process.

To simplify things further, you can designate one device as the primary device with just one click in the app. The primary device will then regulate the target pressure and control the other fan units. In the app, you can simply select the standard that you want to consider for your measurement. The measurement will then proceed automatically and in accordance with the chosen standard, whether you're using one device or up to four devices.

Basic Set & Accessories



		Wöhler BC 600 Blower Check Singlemode	Wöhler BC 600 Blower Check Multimode	Wöhler BC 600 Blower Check Extension Set Multimode
Application	Airtightness measurement of the building envelope	●	●	●
	Leak detection in the building	●	●	●
Scope of delivery				
Wöhler BC 600 Blower Check Singlemode		●		
Wöhler BC 600 Blower Check Multimode			●	●
Hose Capillaries with Throwing Weight (2 pieces)		●	●	
Hose set Multimode (2 pieces)				●
Clamps 220 mm (18 pieces)		●	●	
Clamps 120 mm (4 pieces)		●	●	
Telescopic rod		●	●	●
Sealing canvas 1.8 x 2.8 m		●	●	
Sealing canvas Multimode (with 2 holes) 1.8 x 2.8 m				●
Cover hood		●	●	●
Connection cable 2.5 m		●	●	●
Transport bag		●	●	●
Plastic case for clamps		●	●	
Article no.		6440 J	10228 J	11486 J

● = included



Upgrade-Set Multimode

Pre- and final inspection Calibration and adjustment, upgrade to Wöhler BC 600 Blower Check Multimode, adhesive dots for labelling the various Wöhler BC 600 Blower Checks



Accessory-Set Multimode

incl. hose set Multimode (2 pieces), sealing canvas Multimode (with 2 holes) 1.8 x 2.8 m
Article no. 10274 J



Professional Sealing Set

incl. sealing plugs (2 pieces) for waste water pipes Ø 40 / 70 / 125 / 160 mm, sealing plugs 50 / 110 mm (4 pieces), sealing bladder set 70 – 150 mm (2 pieces), adhesive tape transparent 50 m (1 roll) and fabric-reinforced 66 m (1 roll), valve set, hand pump with various adapters, case
Article no. 4810 J



Additional Installation Frame Door

maximum fitting dimension: 1.25 x 2.30 m // minimum fitting dimensions: 0.80 x 1.35 m
incl. profile frame 675 mm (4 pieces), profile frame 1,200 mm (4 pieces), transport bag
Article no. 5675 J



Additional Installation Frame Door & Window

maximum fitting dimension: 1.25 x 2.30 m // minimum fitting dimensions: 0.80 x 0.90 m
incl. profile frame 675 mm (4 pieces), profile frame 775 mm (4 pieces), profile frame 1,200 mm (4 pieces), transport bag
Article no. 5671 J

Knowledge base

Qualified · Practice-Oriented · Technological

You have to work with the most diverse standards, rules and regulations daily – who is supposed to remember all this? On our knowledge base you will find compact application knowledge for the professionals about:

- ▶ Measuring
- ▶ Inspection
- ▶ Cleaning



Measuring Knowledge base

Blower-door-test - measuring the airtightness of a building

An airtight building envelope prevents condensation or structural damage and heat loss through uncontrolled ventilation. In addition, compliance with the air tightness limit values is a requirement for cost savings. This can be determined by the Blower Door measurement (air tightness measurement).



Scan
now!



[woehler-international.com/
knowledge](http://woehler-international.com/knowledge)



Scan
now!



[www.woehler-international.com/
s/c266e](http://www.woehler-international.com/s/c266e)





Scan the QR code and find out more!

WÖHLER

Wöhler Technik GmbH
Headquarters Germany
Wöhler-Platz 1 · 33181 Bad Wünnenberg
www.woehler-international.com