



---

GENERAL  
**SYSTEM**  
**BROCHURE**

---



# FOR WHAT TRULY MATTERS **TRUST IN EVERY CONNECTION**

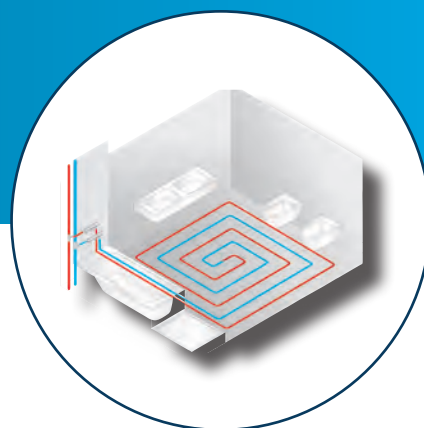
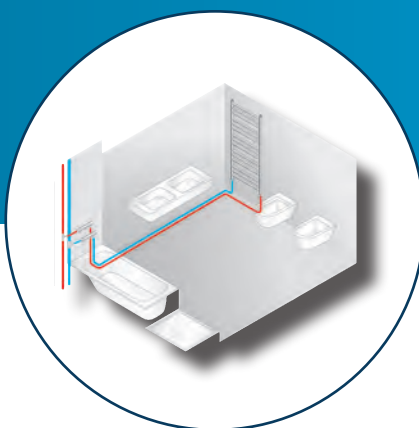
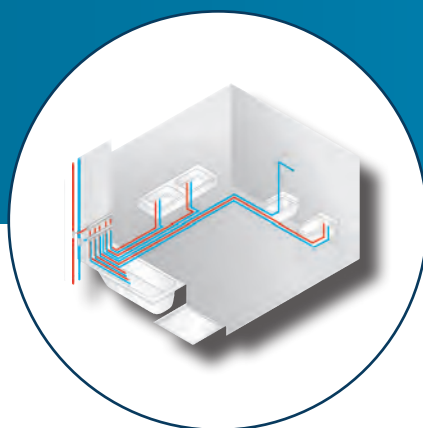
At MULTITUBO we understand that plans can change on a building site. Our system is designed with the installer in mind so we try to provide as much flexibility as possible.

Each of the different types of connection in our product range have their own advantages so they can be combined to create the most efficient system for our customers' needs.

Our knowledge and system flexibility has been trusted since the company was founded in 2004 and today you can find MULTITUBO systems available in more than 40 countries worldwide.



## A SYSTEM FOR: **TAP WATER RADIATOR CONNECTION RADIANT HEATING**



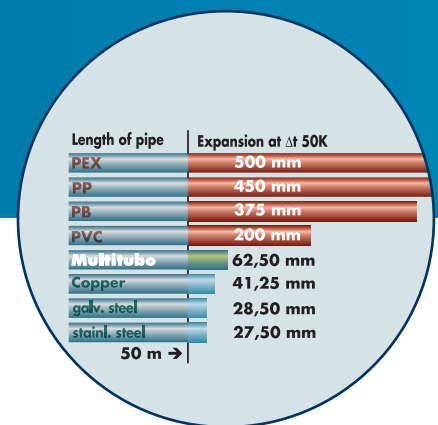
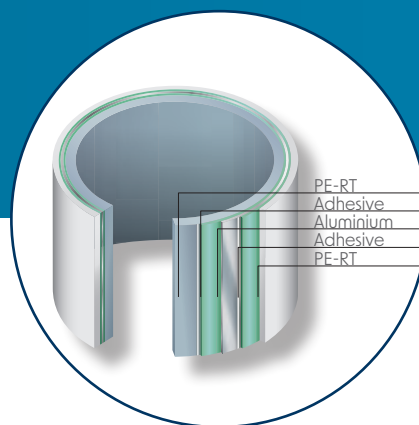
Delivering a secure and permanent supply of potable water is considered one of the basic demands of modern life. MULTITUBO's Aluminium Multilayer pipe and flexible, innovative connections provide a modern installation system which is state of the art.



# MULTITUBO MULTILAYER PIPE

## – FLEXIBLE AND SECURE

Our Research and Development has been supporting innovation and growth in the multi-layer pipe market for more than 30 years. This means our customers can rely on the quality of our products and the design that delivers them.



### MODERN COMPOSITE MATERIAL

- Environmentally friendly due to the lower use of natural resources
- Combines the advantages of Metal- and Plastic-pipes
- Up to 70% lighter than metal-pipes
- 100% Oxygen-diffusion barrier

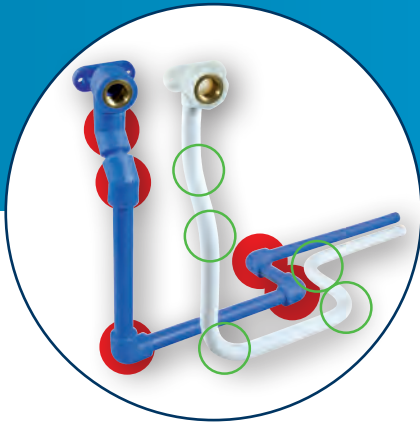
### HIGHEST HYGIENIC SAFETY

- PE-RT is hygienically clean with a very smooth surface
- No corrosion, the surface quality remains the same throughout the total time of operation
- No deposits are able to impact the functionality of the pipe

### LOW THERMAL EXPANSION

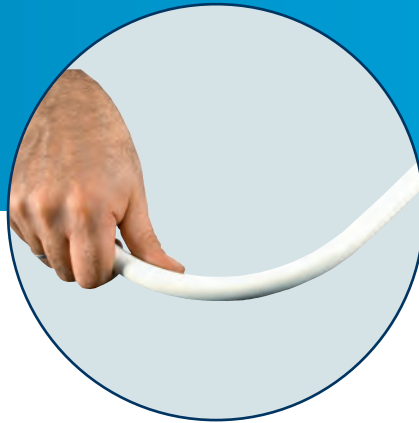
- Linear expansion similar to copper pipe
- Lower thermal activity means lower stress in long term usage for the pipe





## FEWER FITTINGS DUE TO MORE FLEXIBILITY

As the formstable pipe can be easily bent and retain its shape without additional fixings, the total number of fittings and fixtures on any project will be reduced. This means that the system can be installed efficiently while lowering project costs.

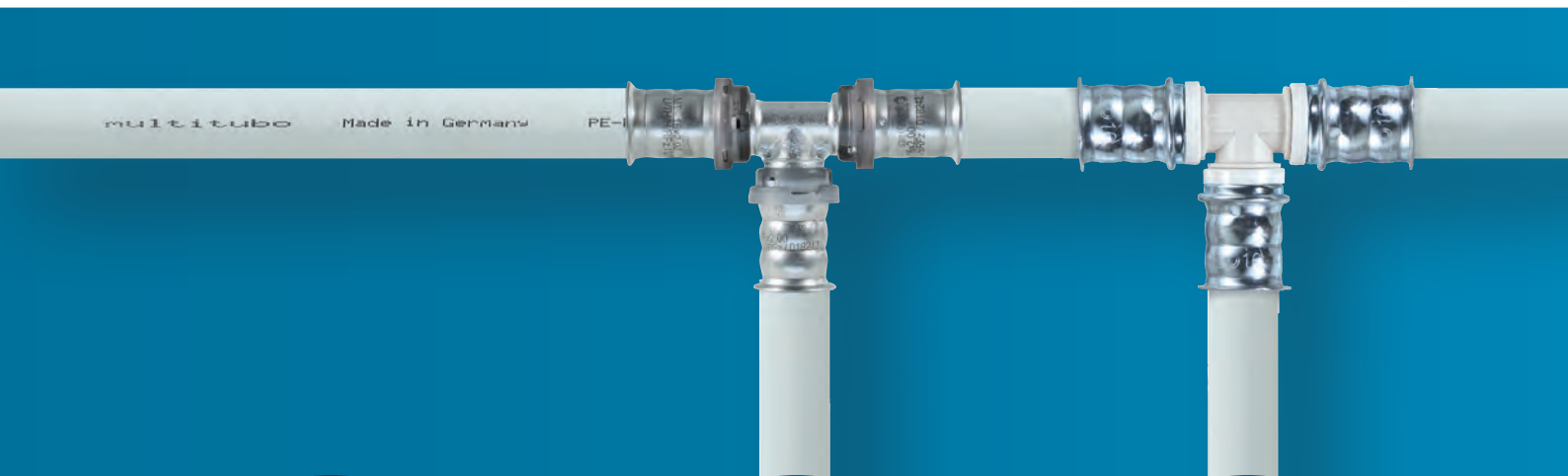


## FORMSTABLE – EASY WORKING

- Once the pipe is bent it remains in its form
- No complex fixing required
- Able to be installed in low ambient temperatures without preheating the pipe



## ALTERNATIVES – FULLY COMPATIBLE!



### MODULAR PRESS-FITTINGS

63 / 75 / 90 / 110 mm

For risers and supply pipes up to 110mm, the modular Press Fitting is ideal. By simply fixing the pre-pressed pipe sections with gripper clamps the installation can be done simply and quickly on site making installations in riser cupboards. Facilitates work above ceilings and in locations hard to access..



### METAL-PRESS-FITTINGS

16 / 20 / 25 / 32 / 40 / 50 / 63 / 75 mm

Our most popular connection technology with the widest range.

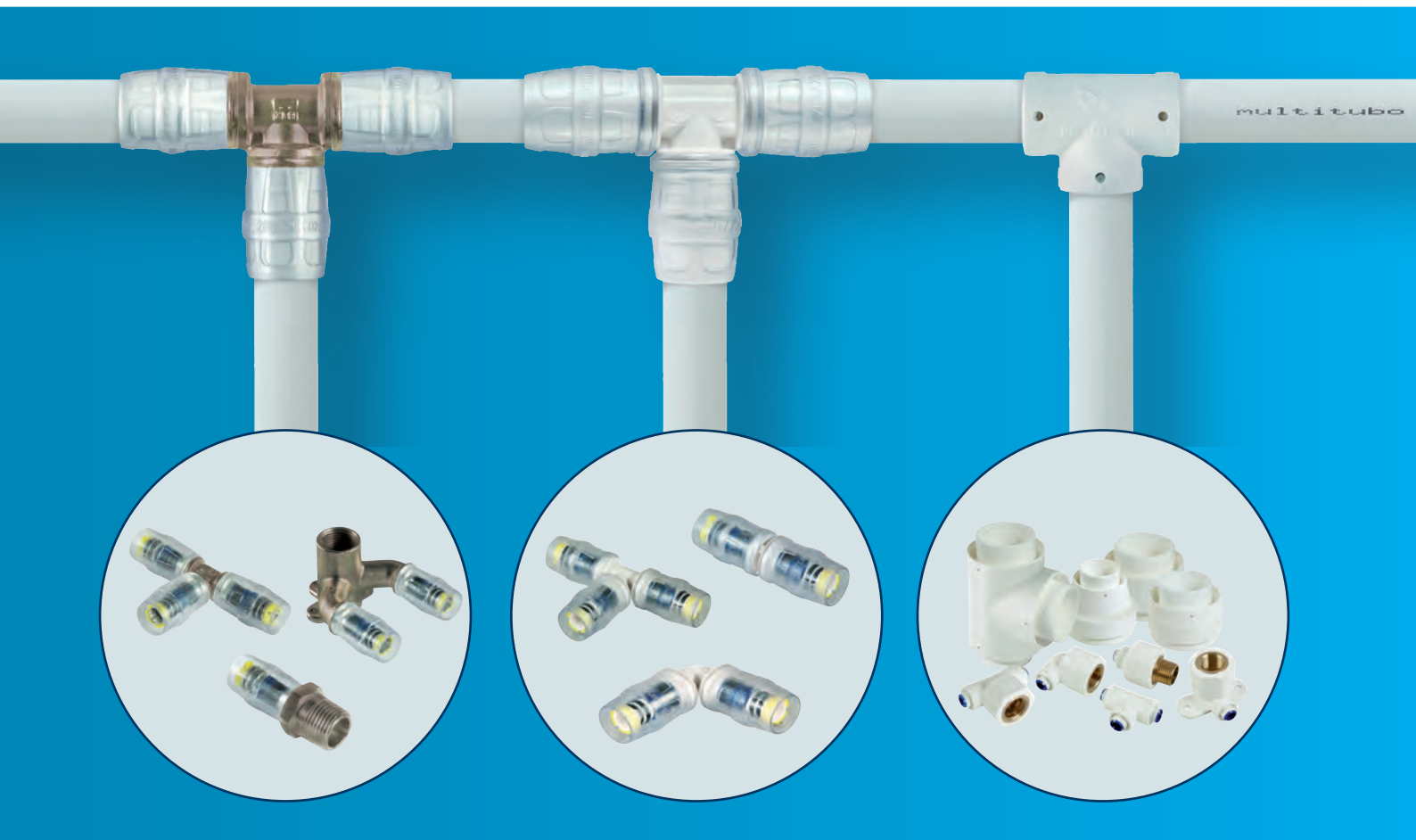


### PPSU-PRESS-FITTINGS

16 / 20 / 25 / 32 / 40 / 50 / 63 mm

Our high quality PPSU-Press Fittings are a cost-effective alternative to the most commonly used fittings.

All our MULTITUBO system fittings are fully compatible across the range. This means that you can select the most suitable fitting for your project enabling a smooth installation and the opportunity to optimise the installation even while on site.



### METAL-PUSH-FITTING

16 / 20 / 25 / 32 mm

The MULTITUBO system Push-Fitting made from lead-free brass is our fastest and most effective fitting. No matter if it is a new project or a repair, the strength of the Push-Fitting and the ease of its installation even in narrow spaces means it offers incredible project flexibility.

### PPSU-PUSH-FITTING

16 / 20 / 25 mm

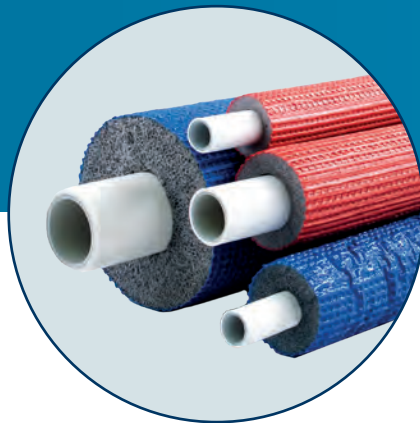
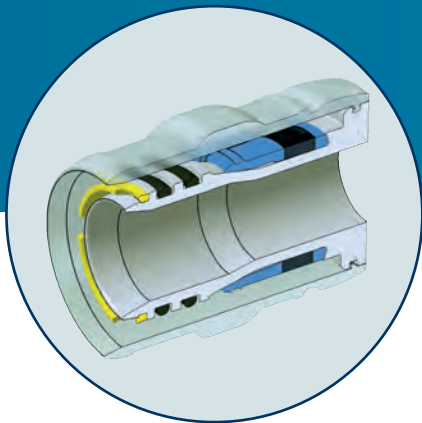
Our PPSU-push fittings deliver the same high performance results as our metal push fittings but at a lower cost which makes them a more affordable choice for the most used fittings on your project.

### PE-RT-WELDING-FITTINGS

16 / 20 / 25 / 32 / 40 / 50 / 63 / 75 mm

Our aluminium Multilayer pipes can now be welded by using this innovative welding fitting. This fitting combines the advantages of a modern pipe system with traditional connection technology and provides cost savings too.

# INNOVATION YOU CAN RELY ON



## DESIGNS

Our fittings are specifically designed to be as uniform as possible. Keeping our installation processes the same across our fittings helps installers to avoid mistakes.

## THERMAL INSULATION

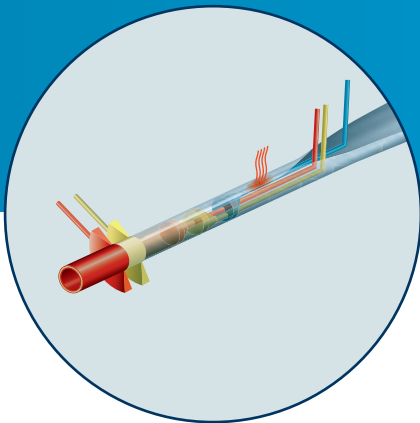
With our system-compatible thermal insulation, you get pre-insulated pipes in all the dimensions we supply in different insulation thicknesses. The perfect addition from a single source.

## APPROVALS AND CERTIFICATIONS

Our products are tested according to national and international standards. Approved and certified by international relevant authorities, we work closely with all national and international institutes to retain our certification.



As a innovator in the heating / sanitary sector, MULTITUBO does more than just produce high quality, reliable products. Our aim is to provide our customers with an innovative, easy to install system that meets all safety requirements and is efficient to use. We want to help your project run smoothly so we have adopted important accessories like pre-insulated pipes, developed solutions for tap water applications as well as adding radiant heating and radiator connections to our product-range.



## INNOVATIONS

The demands of modern mechanical engineering are constantly changing, and new challenges identified to be solved. We work closely with our partners to find solutions to these problems and continue to deliver high quality innovation.

## WARRANTY

All our products are developed, produced and tested according to the highest standards. We guarantee this through our insured warranty.

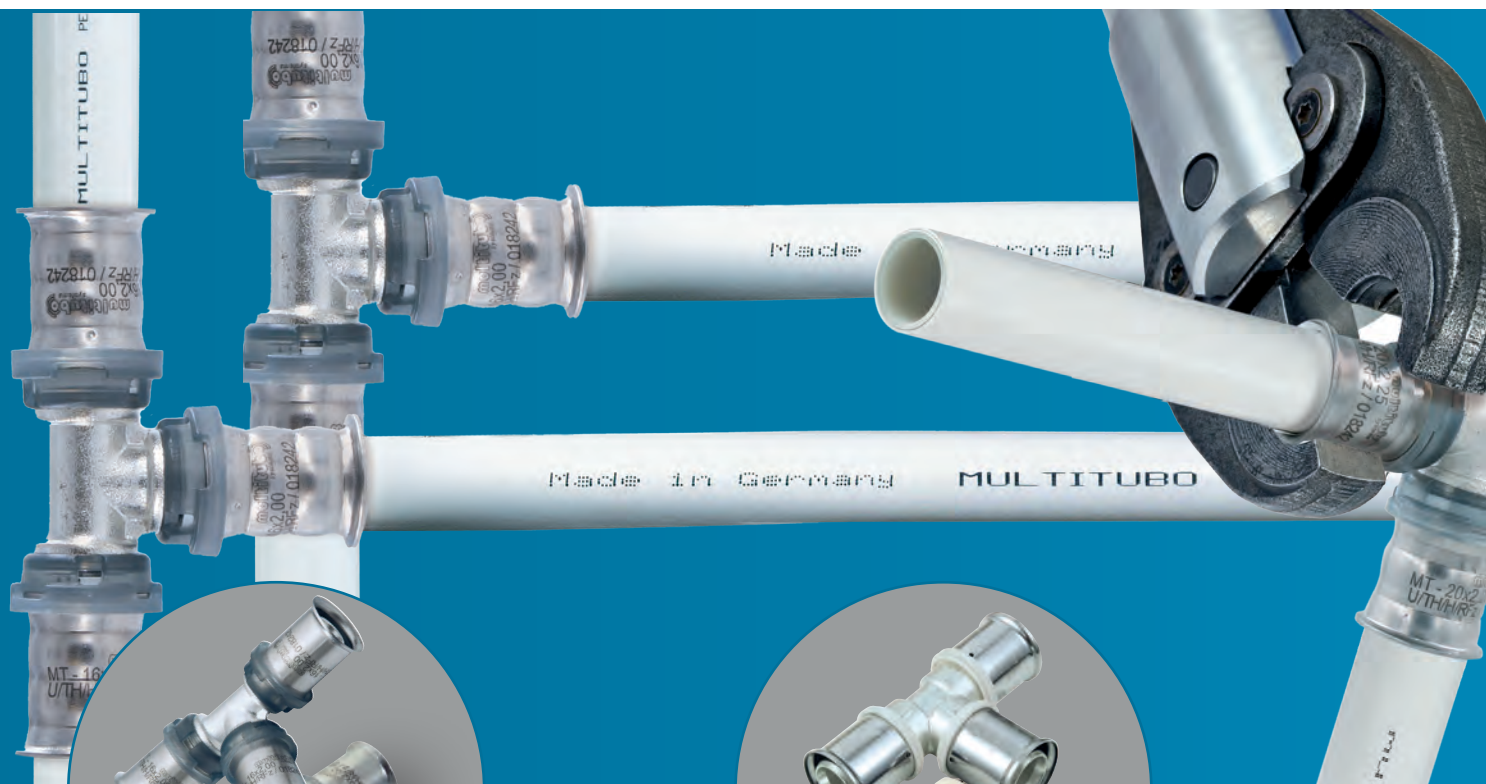


NSF International



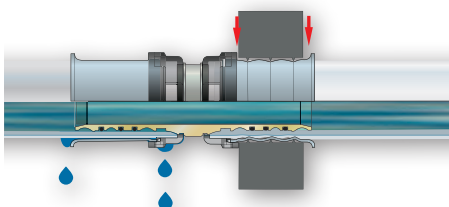
# PRESS-FITTINGS

## – ROBUST CONNECTION



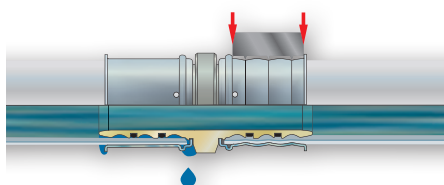
### G2 PRESS-FITTING, 16-32 MM

- Fitting body made of **brass** or **more cost-effective PPSU**
- Stainless Steel sleeves with **Inspection-window**
- **Double Press Jaw guides**
- **U-(UP)/TH-/H- and Rfz Press contour**
- **3 O-Rings** for permanent tightness
- **Additional test safety**



### PRESS-FITTING, 40-75 MM

- Fitting body made of **brass** or **more cost-effective PPSU**
- Stainless Steel sleeves with **Inspection-window**
- **Double Press Jaw guides**
- **U/TH-Press contour**
- **3 O-Rings** for permanent tightness
- **Additional test safety**



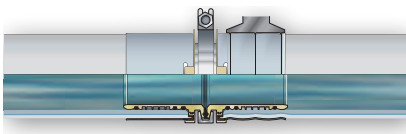
A broad scope of plumbing project demands can be met by our range of fittings which are available in 16 – 75mm. The PPSU-Press Fitting completes the product range by providing a lower cost solution.

Easy pre-assembly at the workbench for larger sizes (63 - 110mm) enables simple and fast installation on site. A more comfortable way to do over-head installations such as 90 and 110mm connections.



## MODULAR 90/110 MM

- Adapter for the press-connection to the pipe modularly expandable with angle or T-piece base bodies
- Stainless Steel sleeves **with Inspection-window**
- **Special profile-geometry** for safe pressings, 3 O-Rings
- **U-Press contour**
- **Pressing at the workbench**, connecting on site
- **Connection by crimper-clamp** and torque, simple and fast
- **Safe to install**, even at height



# G2 – THE NEW FITTING GENERATION

– 16-32 MM

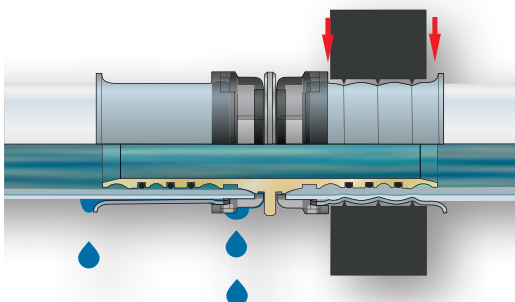


## UNPRESSED AND LEAKING

The fitting has been tested in accordance with DVGW worksheet W 534, unpressed and leaking.

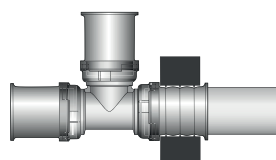
## NO MORE DEBURRING

The O-rings are protected in the profile and also allow the use of non-deburred pipes in the dimensions 16 mm to 25 mm.

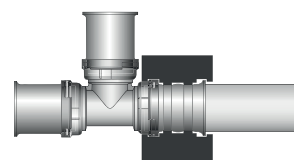


## MORE PRESS PROFILES

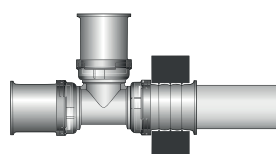
The new fitting generation can now be pressed with 4 press profiles. A clear gain of more flexibility in tool and cost management.



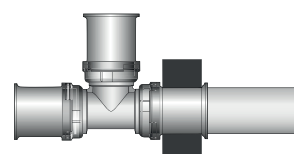
U-contour



TH-contour



H-contour



RFz-contour



## MORE PRESS PROFILES

Can now be pressed with U/TH/H and RFz profiles

## NO MORE DEBURRING

In the dimensions 16 mm - 25 mm

## UNPRESSED AND LEAKING

Unpressed and leaking

## 360° INSPECTION WINDOW

Even easier to check the insertion depth of the pipe

## FLOW-OPTIMIZED

For even more performance with the same dimensions

## NEW SLEEVE INSCRIPTION

Easier to read with new sleeve inscription

## NEW PROFILE GEOMETRY

Specially adapted profile for use with 4 press profiles

## DOUBLE PRESS JAW STOP

We are of course retaining the double press jaw stop

## SLIM DESIGN

The usual ease of the insulation finishing

### 360° VIEWING WINDOW

In order to make daily work easier, the stop ring can be viewed through 360°. This allows a good view for checking the insertion depth of the pipe.

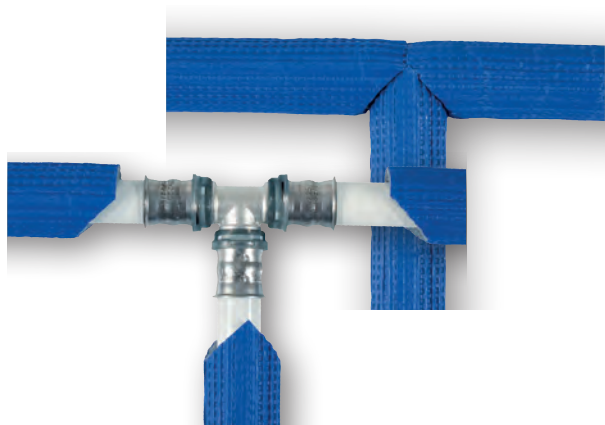
### NEW SLEEVE INSCRIPTION

The sleeves now show the dimensions, press profiles, our logo and the batch number even more clearly.



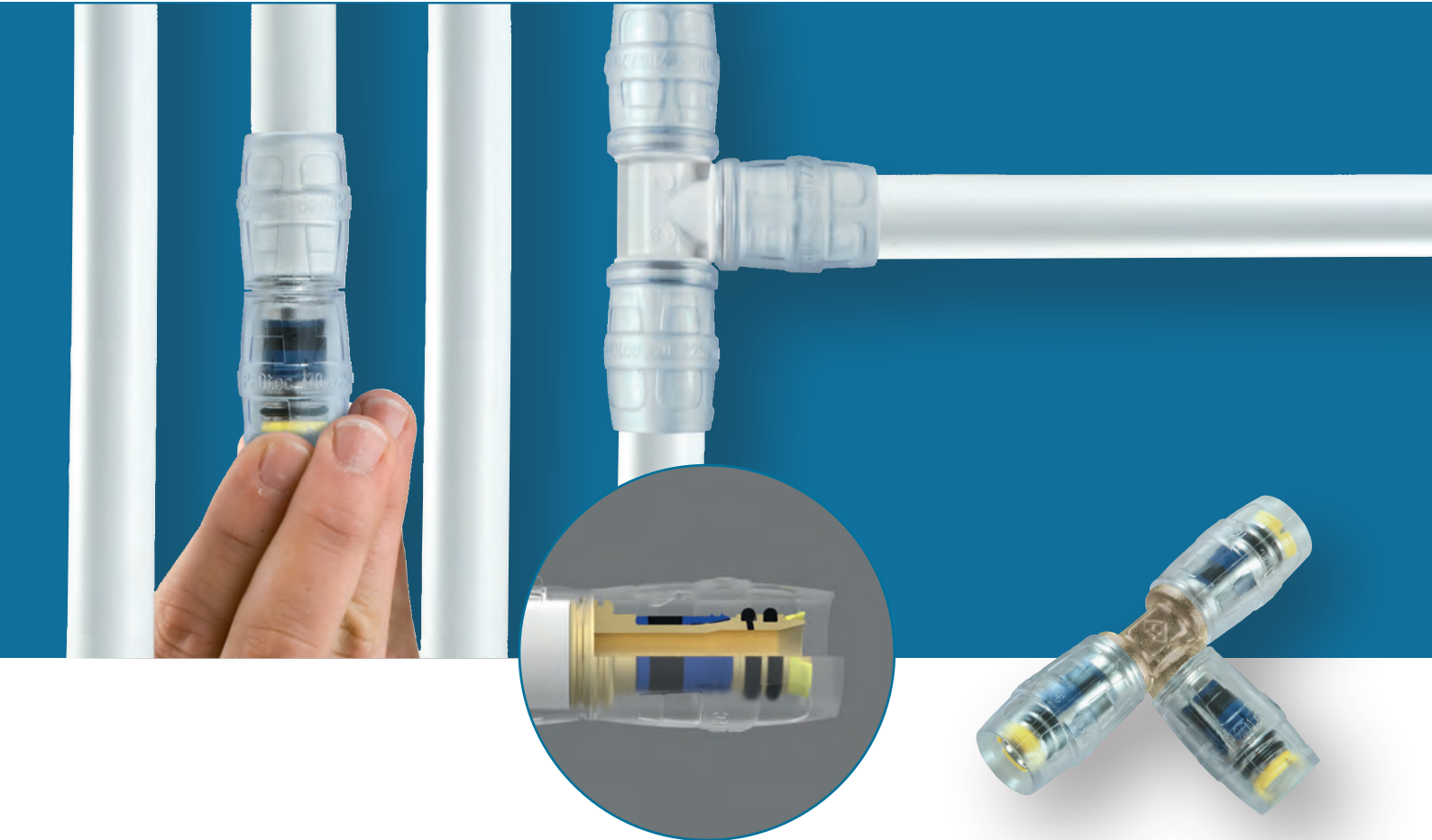
### DOUBLE PRESS JAW STOP AND SLIM DESIGN

In order to make the daily work process as safe and simple as before, we have certainly retained the double-sided press jaw stop and the slim design.



# PUSH-FITTING

## – FAST CONNECTION



### SAVES UP TO 30% OF THE TOTAL COSTS

resulting from:

- **Fast to install:**  
Cut to length, calibrate, push together, complete!
- **Quick set-up times**
- **Slim design** for easy insulating
- Range of even **more cost-efficient PPSU-Fittings** available
- **No maintenance of machines, low risk of theft**

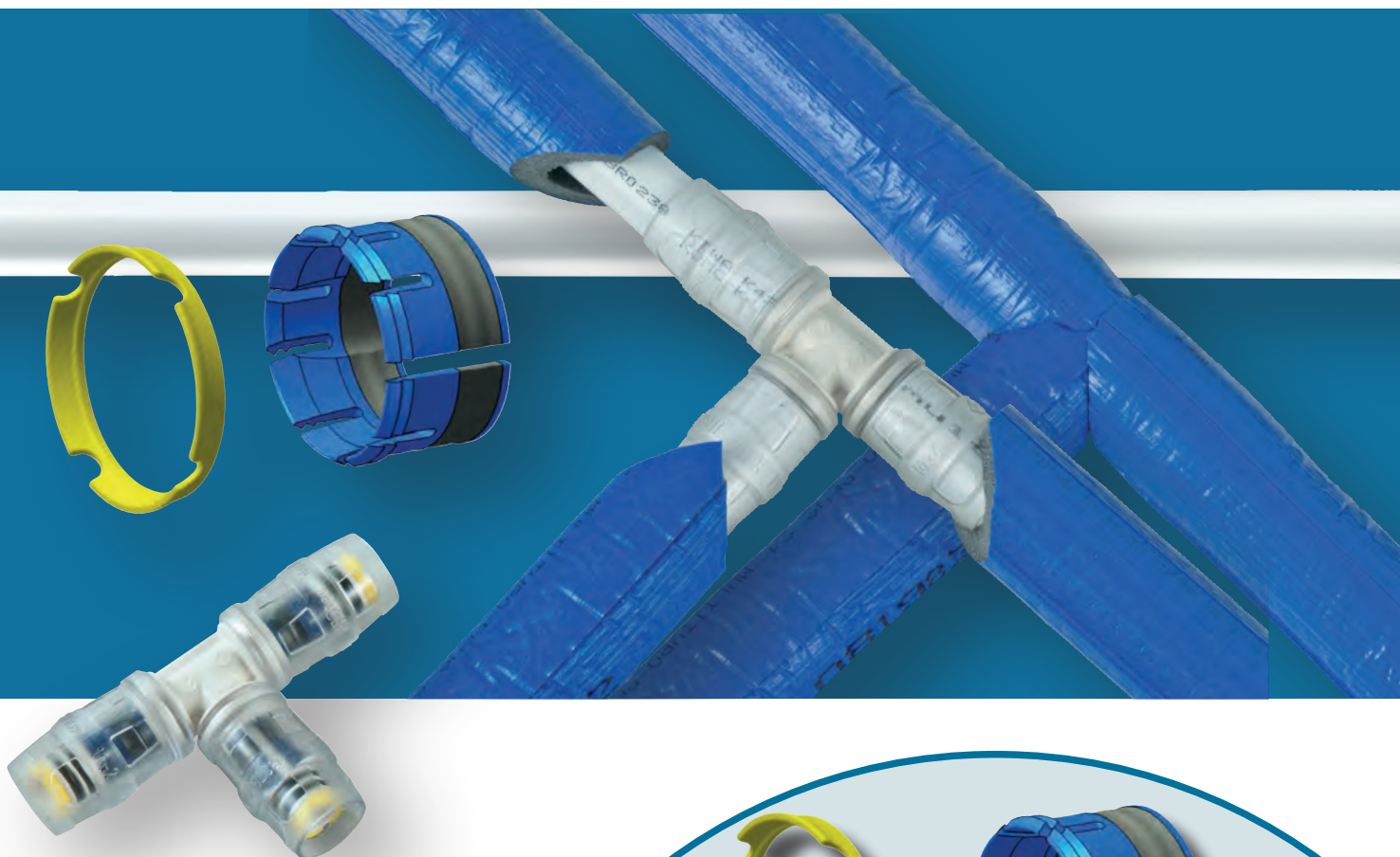
### PUSH-FITTINGS

The Push Fitting is the perfect solution for fast installations or when there is limited space available. Projects or repairs can be completed quickly with low set-up time and very little tool usage.

The special secure connection technology of this fitting provides the highest degree of installation reliability: Non calibrated pipes cannot even be pushed into the fittings.

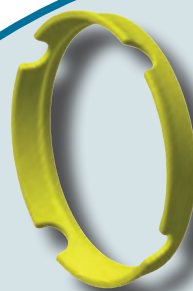
### METAL-PUSH-FITTING

- **Lead-free Brass** fitting body
- **Grip-Ring** , holds the pipe reliable in place
- **Protector-Ring** , prevents insertion of non-calibrated pipes
- **Transparent Plastic sleeve** : Indicates the correct insertion-depth of the pipe .
- **2 O-Rings**
- Easy to handle **even in narrow spaces**
- **No special tools required**

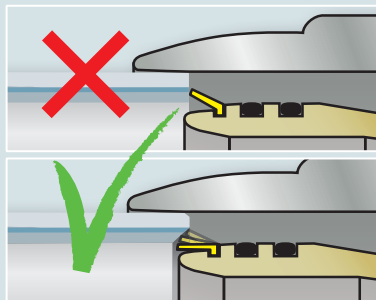


## PPSU-PUSH-FITTING

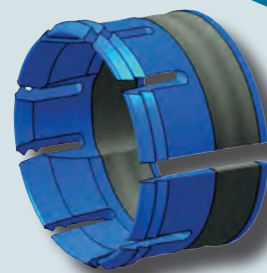
- Fitting body **made of PPSU**
- **Same safety features** as the MULTITUBO system Metal-Push-Fitting
- **Grip-Ring** , holds the pipe reliable in place
- **Protector-Ring** , prevents insertion of non-calibrated pipes
- **Transparent Plastic sleeve** : Indicates the correct insertion-depth of the pipe .
- **Special profile** for permanent hold
- **2 O-Rings**



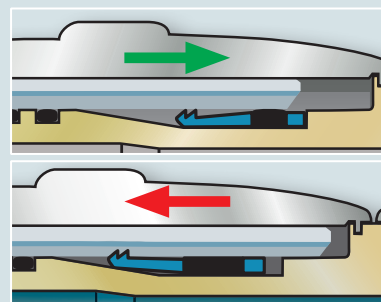
### THE PROTECTOR-RING



The Protector Ring prevents insertion of non-calibrated pipes.



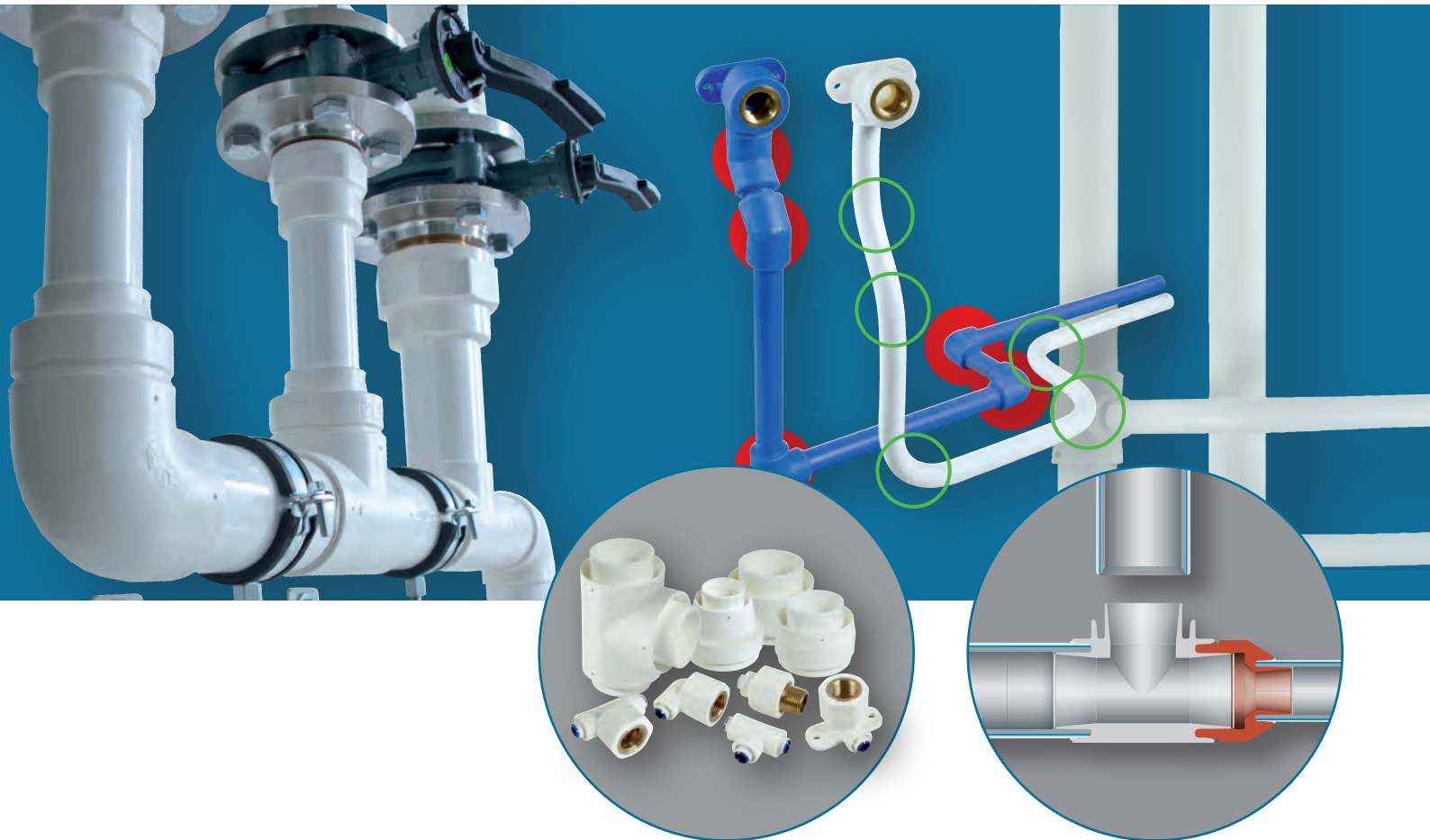
### THE GRIP-RING



When the calibrated pipe is inserted the Grip Ring gives way. The Grip-Ring is embedded into the connection.

# WELDING-FITTINGS

## – HOMOGENEOUS CONNECTION



- **The cost-saving solution** for Dim. 16mm to 75mm
- **The first welding solution technology for Al-Multilayer pipes**
- **Fewer fittings** required than with traditional weldable pipe systems
- **Up to 90% weight reduction**, compared with Metal-Press-Fittings
- **Homogeneous, hermetic connection**
- **Welded inside and outside**, for highest safety

### WELDING-FITTINGS

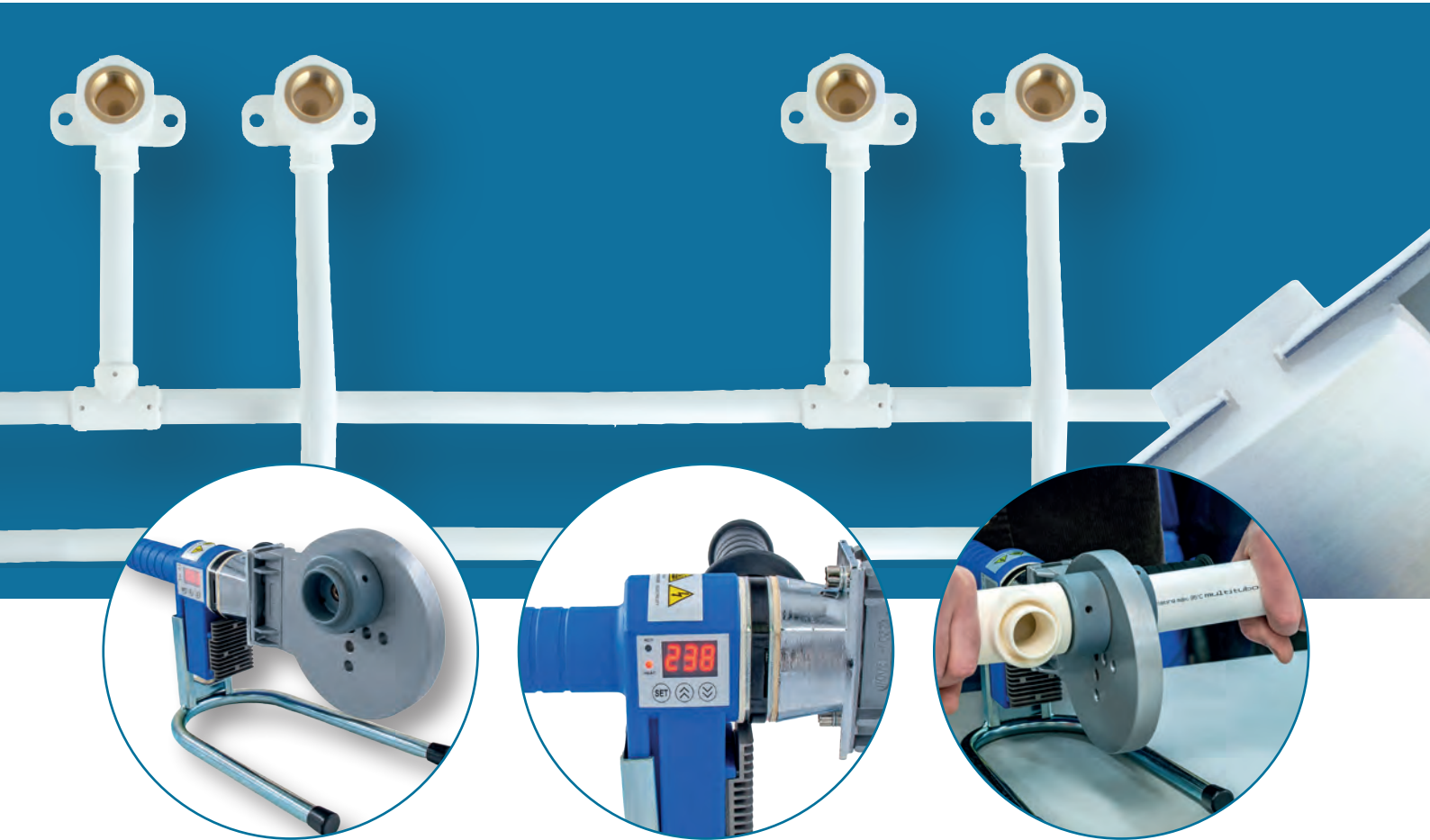
MULTITUBO systems welding fittings combine the advantages of Alu-Multilayer pipes with welded connections. Our patented technology enables a homogeneous and hermetic connection. To make this possible we enhanced the traditional welding technology: The MULTITUBO systems pipe is welded from in- and outside. This means the pipe is totally embedded into the fitting.

The lightweight PE-RT Fittings are up to 90% lighter than the the equivalent Metal-Press-Fittings.

### WELDING-FITTINGS

- Fittings made of **PE-RT Type II**
- **Patented connection technology:** Special Profile geometry for perfect flow of the material
- **Thread fittings with inserted brass screw collars**
- Pipe does **not need to be peeled off**
- **Chamfer the pipe , heat-up pipe and fittings simultaneously, join them, done!**
- **No corrosion** thanks to 100% protection to the aluminium layer.
- **Simple pipe dimension transitions** by using reduction-adapters





# OUR PROJECTS AND STRENGTHS

## - UNIQUE IN EVERY DETAIL

In more than 40 countries around the globe we have completed prestigious projects, proving reliability and excellence of our products.

Multitubo products meet the strictest international quality standards, giving importers confidence in using our solutions worldwide.



# WORKING WITH **REAL PROFESSIONALS** IS PRICELESS



**Once you work with our experienced team, you'll understand why professionalism and expertise make all the difference in project success.**

## **MAXIMUM VARIETY OF RELIABLE FITTING CONNECTIONS**

Our system offers a wide range of fitting connections, ensuring compatibility and flexibility across various project types, from small installations to large-scale commercial systems.

## **SHORT LEAD TIMES AND RESPONSIVE LOGISTICS**

Our efficient logistics ensure quick deliveries and short lead times, helping you keep your projects on schedule and maintain your competitive edge.

## **RELIABLE AND COMPETENT SALES AND SUPPORT TEAM**

Our highly trained team of sales and support professionals is always ready to assist you with technical advice and project support, ensuring seamless cooperation.





DW Verbundrohr GmbH · Langer Rain 38 · 97437 Hassfurt · Germany  
Fon: +49 (0) 9521 95356-0 · E-Mail: [export@multitubo.eu](mailto:export@multitubo.eu)  
[www.multitubo.eu](http://www.multitubo.eu)

Subject to technical changes. For detailed technical information and installation instructions, please refer to the technical manual under „Downloads“ on our website or request them directly from us.