



QUARTER
BATH

NEW
PRODUCTS



TORNADO
Wall-Hung Toilet



Cabinet Compatible Sinks



Half Countertop Sink

TORNADO

Wall-Hung Toilet

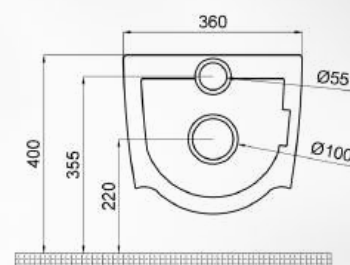
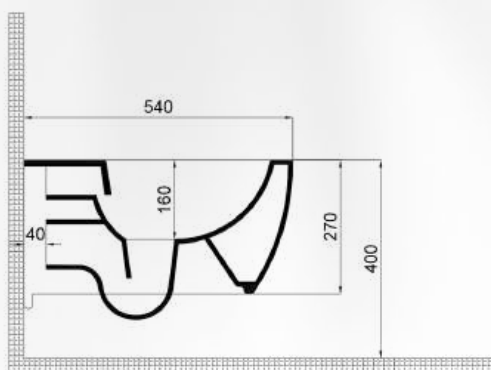
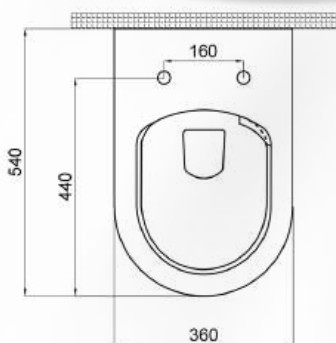


70DE03052



Q Flush flushing technology allows water to create a vortex in the toilet bowl and provide a stronger and more effective cleaning.

This circular motion washing system prevents the spread of germs in the bathroom and on the toilet seat without the need to reuse water. In this way, water is saved and it works quieter and more efficiently than other washing machines.



TORNADO Q-HYBRID GLAZE

The “Q Flush Tornado” washing system is combined with the “Dual Surface Technology”, the shiny inner surface allows water to flow faster and prevents dirt from sticking to the surface. The matte outer surface provides a modern and stylish look in bathrooms and helps to make stains such as fingerprints less visible.



Matte black exterior, glossy black interior

Matte white exterior, glossy white interior



SPACE LINE INSET

Cabinet Compatible Sinks



DIMENSION

- 60x38 cm

- 50x30 cm
Battery hole on the side



SMOOTH LINE INSET

Half Countertop Sink

DIMENSION

- 63x40 cm



SMOOTH LINE D-SHAPE

Half Countertop Sink

DIMENSION

- 60x40 cm



NEW
COLORS



ROUND LINE

GREEN



RUBY



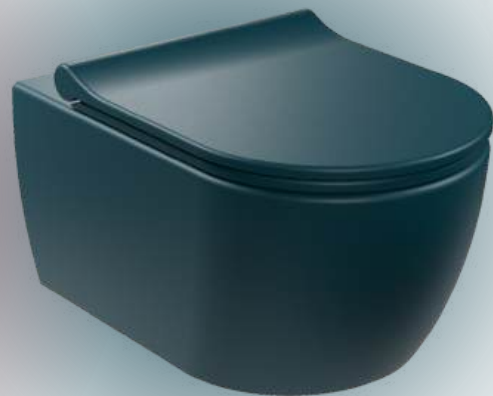
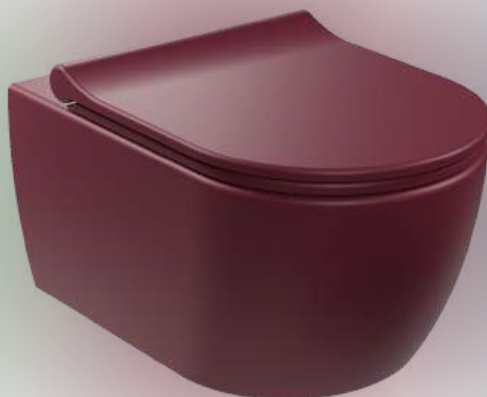
BLUE



RAPID LINE



DEEP



NEW COLLECTION



Bathroom Furniture

ALTERA



ALVIN



ASTORIA



CARION



INTEMA



MEERI



ROSE



NOVA



ROOZ





www.quarterbath.com