



PROJECTS
REFERENCE
2024



AATZ NONHYEON

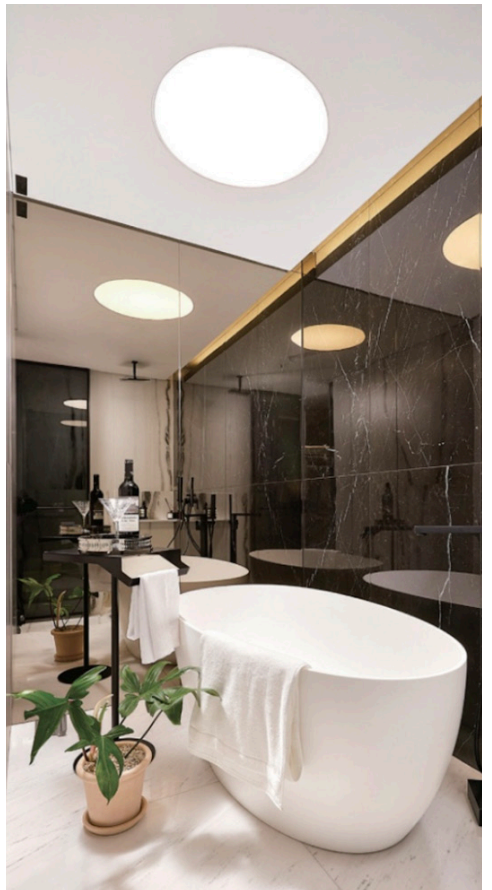
Location | Seoul (South Korea)
Business | Model Housing

Our products | Pillar, Edge

AATZ NONHYEON, located in the heart of Seoul, South Korea, is a model house that epitomizes a masterpiece of design and elegance.

Each bathroom, crafted with our **EDGE** and **PILLAR** series in our special matt black finish, exudes

a sense of luxury and modernity, perfectly complementing the overall aesthetic of the structure. This project seamlessly blends design and innovation, with every detail meticulously planned to provide a unique and memorable experience, and we are really proud to be part of it.





JACARANDA LUXURY VILLAS

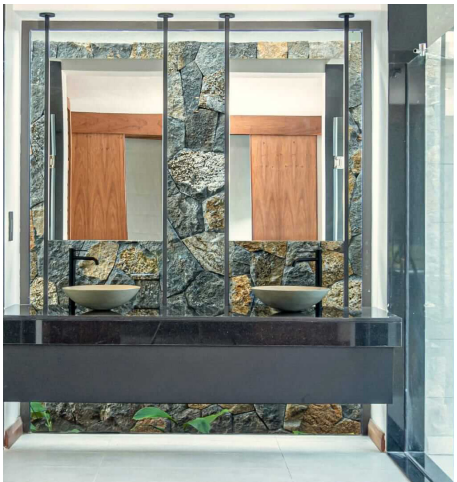
Location | Balaclava (Mauritius)
Business | Luxury Resort

Our products | Jabil 25, Jabil 35

We are proud to have contributed to the prestigious **Jacaranda** complex, a serene haven of private villas in Balaclava (Mauritius).

This project captures the tropical essence of the island, offering residents a unique outdoor living experience in absolute tranquility.

Our collections have enhanced the authentic luxury of these spaces, ensuring comfort, harmony, and beauty, perfectly aligned with the refined design of Jacaranda.





MANGYANG GOLF CLUB HOUSE

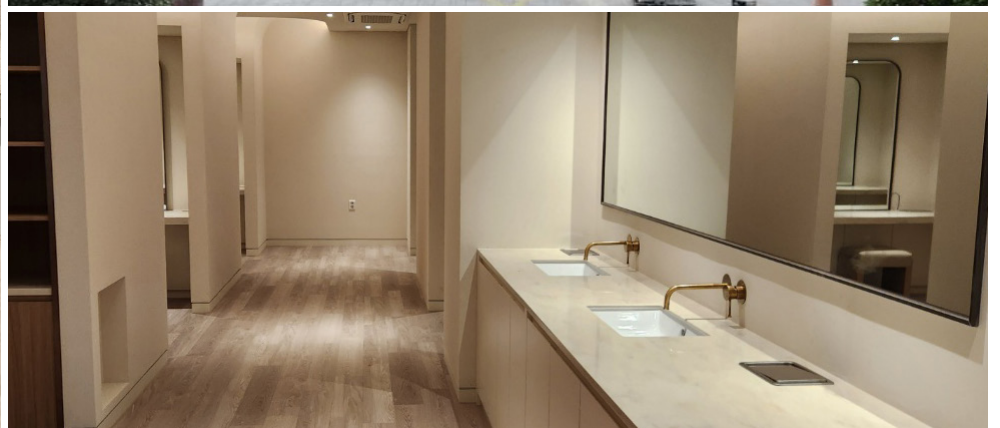
Location | Mangyang (South Korea)
Business | Clubhouse

Our products | Scaccommatto

The **MANGYANG GOLF**, a prestigious golf club in South Korea, has selected our Scaccommatto series for its exclusive Club House.

In collaboration with our partner, we have added a touch of sophistication to the bathrooms of this stunning design facility, where

elegance and functionality come together to make every moment special.





MAREVA VILLAS

Location | Mont Mascal (Mauritius)
Business | Luxury Villas

Our products | Pillar

Where luxury meets the lush tropics: **Mareva Villas**, a refined sanctuary on the north coast of Mauritius, blends modern architecture with the essence of island living. Expansive open spaces, serene pool views, and verdant landscapes set the stage for a truly immersive experience. The elegance of our

PILLAR series seamlessly complements this vision, enhancing each moment with its sharp design and timeless quality. A collaboration where design, nature, and luxury come together to craft an unparalleled experience.





THE ONE HOTEL

Location | Dubai (UAE)
Business | Hotel

Our products | Lifestyle

The One at Jumeirah Village Triangle, The First Group's latest prestigious development located in the heart of the vibrant district of Jumeirah Village. The exciting, four-star, upper-midscale hotel is centrally located providing convenient access to New Dubai's many attractions.

Guests will look forward to being pampered at The One at Jumeirah Village Triangle's luxury spa, which will feature multiple treatment rooms and a range of indulgent treatments. The facility will also feature a fully-equipped, ultra-modern gymnasium.





JW MARRIOT MARQUIS

Location | Dubai (UAE)
Business | Hotel

Our products | Pulse Square

JW Marriott Marquis Hotel Du-
bai welcomes you to the heart of
the city's lively downtown district.
Soaring above Sheikh Zayed Road,
our bustling and dynamic 5-star
hotel with spa is one of the tallest
in the world, consisting of two tow-
ers with 1608 rooms and boasts
awe-inspiring views of the water

and Dubai cityscape. Gracefully
furnished rooms and suites pro-
vide a sanctuary with deluxe bed-
ding, complimentary Wi-Fi, marble
bathrooms, and 24 hours room
service.





VINCITORE BOULEVARD

Location | Arjan-Dubailand (UAE)
Business | Residential

Our products | Dune CLX

Located in the mixed-use community of Arjan, **Vincitore Boulevard** features European-styled apartments. The low-rise buildings with ornate carvings and elaborate archways offer an old-world charm. The upper two floors of Vincitore Boulevard consist of ultra-luxury and spacious studio and 1-bedroom apartments.

There are 216 units and 32 retail outlets, and facilities like an infinity pool, a wave pool, nature-inspired courtyards, gyms and sauna rooms. Moreover, residents enjoy breathtaking views of the Miracle Garden, as the attraction is just a few steps from the apartment. It is a Vincitore Real Estate Development project that was completed in 2020. The developers are known for building luxurious yet affordable homes in Dubai.



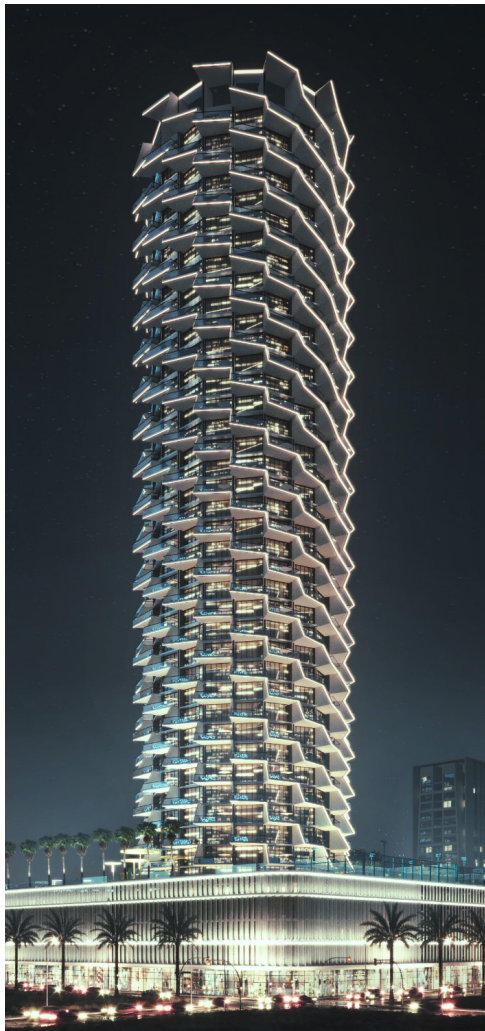
ALOFT HOTEL

Location | Dubai (UAE)
Business | Hotel

Our products | Argo

Aloft Dubai Airport is conveniently located near the International Airport making it easier for guests to commute and offers a host of amenities for a memorable stay.





BINGHATTI ROYALE

Location | Dubai (UAE)
Business | Residential

Our products | Jabil 25

Utterly Exclusive, Regal in Style.

Binghatti Royale epitomizes prestige and sophistication. The name reflects its commitment to offer a lifestyle that is synonymous with exclusivity and regality, where every aspect of living is curated to exude elegance and refinement.

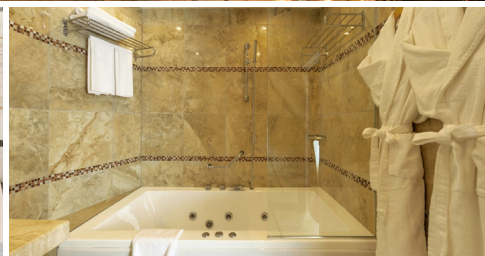


COOP HOTEL

Location | Sofia (BG)
Business | Hotel

Our products | Dune CLX

Located in the ideal city center of Sofia and a 5-minute walk away from Serdika Metro Station and the Parliament, **COOP Hotel Sofia** offers a 24-hour shuttle service upon request. Alexander Nevski Cathedral is 1640 feet from COOP Hotel Sofia, while Banya Bashi Mosque is 1969 feet from the property. The nearest airport is Sofia Airport, 3.7 mi from COOP Hotel Sofia.





ST REGIS HOTEL

Location | Dubai (UAE)
Business | Hotel

Our products | Pulse Square

The St. Regis Dubai, The Palm is conveniently located on the trunk of the Palm Jumeirah, connecting to Nakheel Mall. With easy access to and from Sheikh Zayed Road, it is the ideal location to inspire curiosity and discover the city's major attractions.



GROSVENOR HOUSE

Location | Dubai (UAE)
Business | Hotel

Our products | Jabil

Grosvenor House, a Luxury Collection Hotel, Dubai and its two iconic 45 storey towers, Tower One and Tower Two, redefine the world of luxury in Dubai, United Arab Emirates. The hotel's glittering twin towers are an instantly recognizable landmark in the Dubai Marina. The hotel features 749 spacious, contemporary guest rooms, suites, and apartments with signature Luxury Collection beds, large windows with spectacular views of the Marina, complimentary Wi-Fi and attentive on-call butler service. The area's first true social destination, the hotel is located just minutes from the beach, golf clubs, malls, Dubai Internet City, Media City and more, offering an exceptional setting for business, leisure and exploration. Welcome to the finer side of sophistication. Step into a world of refined heritage, suave elegance and effortless chic.



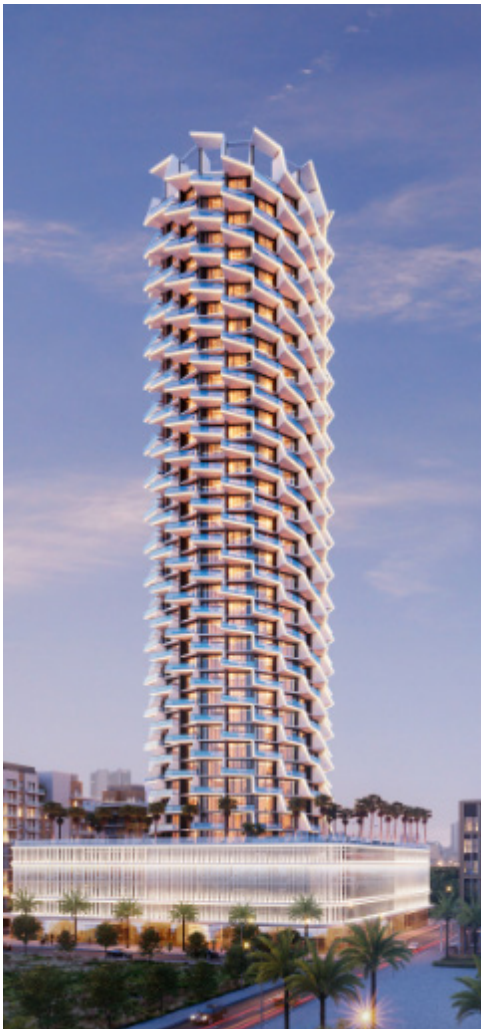


VINCITORE BENESSERE

Location | Dubai (UAE)
Business | Residential

Our products | Goodlife

Vincitore Benessere is a luxurious boutique apartment project conceptualized by Vincitore Real Estate Development. Located in Dubai's once-in-a-lifetime location. Each apartment of Vincitore Benessere is designed in a way that it has an uninterrupted view of Miracle Garden & Butterfly Garden. Vincitore Benessere brings back the classical architectural designs of the Roman Era to life with a palatial retreat home. Vincitore Benessere offers a lavish spread of amenities like no other project in Dubai.

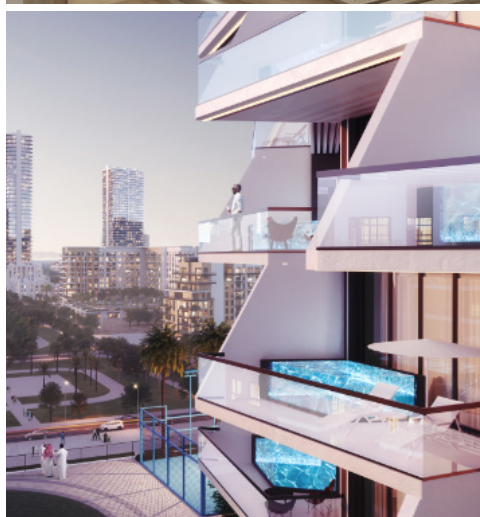


BINGHATTI PHANTOM

Location | Dubai (UAE)
Business | Hotel

Our products | Jabil 25

Binghatti Phantom evokes an elusive, ethereal nature, compelling a transition from the ordinary into realms of ingenuity and possibility. From this notion, the design concept reflects a non-conformist disposition, challenging conventional norms to create a residential oasis that transcends the mundane.





HARBOUR GRAND KOWLOON

Location | Hong Kong (CN)
Business | Hotel

Our products | Goodlife

Offering unrivalled views of Victoria Harbour, **Harbour Grand Kowloon** is conveniently situated on the Kowloon waterfront, just a few steps from Whampoa MTR Station Exit D2. It is located about 8 minutes from Tsim Sha Tsui by complimentary hotel shuttle bus (suspension), and adjacent to the pier travelling to North Point.

The hotel features an on-site rooftop glass-framed swimming pool, soothing spa, beauty services and the 24-hour top-floor fitness centre equipped with state-of-the-art fitness facilities.



LE GRAND QUARTIER

Location | Paris (FR)
Business | Hotel

Our products | Progam One

Le Grand Quartier has a garden, terrace, a restaurant and bar in Paris. Popular points of interest near the accommodation include Gare de l'Est, Gare du Nord and Pompidou Center. The nearest airport is Paris - Orly Airport, 12 miles from Le Grand Quartier.





CONSTANCE MOOFUSHI

Location | Moofushi (MV)
Business | Resort

Our products | Amphore

A gem in the South Ari Atoll, **Constance Moofushi** offers a perfect blend of luxury and simplicity. Surrounded by vibrant lagoons and coral gardens, it's an atoll for divers and wanderers alike.



REGAL HONG KONG

Location | Hong Kong (CN)
Business | Hotel

Our products | Golf Plus

The luxury hotel rooms of **Regal Hong-kong** are uniquely appointed in European Baroque style and tastefully furnished to the highest standards. Relax in the refined comfort of our spacious guestrooms or suites with comprehensive in-room amenities to ensure your comfort.





WASL 1 KIFAF

Location | Dubai (UAE)
Business | Residential



URBAN OASIS by MISSONI

Location | Dubai (UAE)
Business | Residential



MAAS AZUR

Location | Dubai (UAE)
Business | Residential



STONEHENGE 1

Location | Dubai (UAE)
Business | Residential



BLOCK 12-14 CITY WALK

Location | Dubai (UAE)
Business | Residential



ATA HOTEL

Location | Milano (ITA)
Business | Hotel



APOLLO HOTEL

Location | Bratislava (SK)
Business | Hotel



BURJ DAMAN

Location | Dubai (UAE)
Business | Hotel

AND MANY MORE...

