



WHO IS TACONOVA?

The Taconova Group AG is a traditional Swiss company with more than 60 years of experience in smart building services solutions.

EXPERIENCE

- More than 60 years of experience and innovation
- Since 2007: domestic hot water stations
- Since 2007: storage loading stations
- Since 2011: heat interface units
- Since 2019: circuit pumps

DIVERSITY

- From the boiler room to the roof – high grade, innovative systems and products in the following areas:
 - Hydronic balancing
 - Area heating systems
 - System technology
 - Valves and accessories
 - Pump technology

EXPERTISE

- Our professional support team answers your questions and is ready to help with the configuration of individual systems

QUALITY

- Premium quality at its absolute best, manufactured following Swiss production standards and in compliance with international standards
- High grade materials and excellent product workmanship
- Components developed in Switzerland that are both robust and maintenance-free

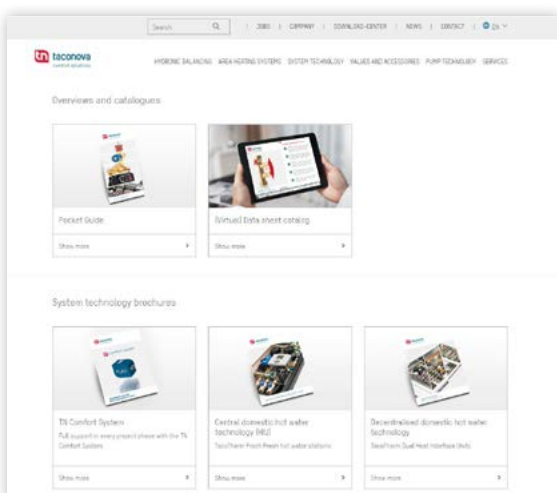
READY FOR MORE?

Always stay up to date online.

A lot of additional information about products and services await you on the Taconova website.

In the Download-Center you will find, for example, the virtual data sheet catalog with background knowledge, videos, answers to frequently asked questions and much more. If a product area is particularly interesting for you, you can view and download the latest brochures there.

All digital materials can be found in the Download-Center under "Catalogs and brochures" on taconova.com



TN COMFORT SYSTEM

Well designed system technology.
Planning made easy.

As a design consultant, you are faced with new challenges every day: for example, specifications for the simultaneous implementation of energy efficiency and domestic hot water hygiene, decisions on the type of DHW heating, individual requirements of the building owners and how to best accommodate the design specifications. With the TN Comfort System, you receive exactly the support you need in every project phase:



Design support

Individual advice and
planning support



Intelligent system solutions

Centralised and decentralised
Heat Interface Units



Individual support

Commissioning, service and
support

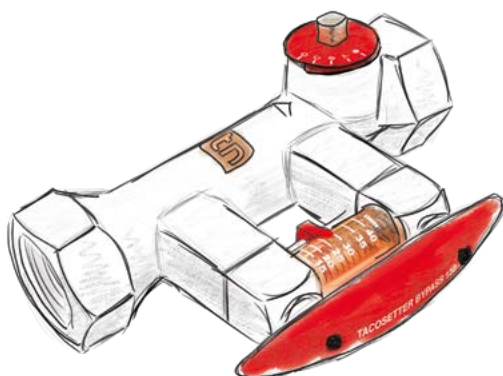
HYDRONIC BALANCING

Hydronic balancing allows heating energy to be distributed such that all parts of a building, all rooms and consumers receive the supply they require.

Taconova offers a broad portfolio of high grade balancing and measuring valves for perfect hydronic balancing.

The classics from the TacoSetter range ensure the required flow rates in heating systems as well as cooling, solar thermal, geothermal and brine distribution systems.

Over the years, Taconova has expanded its range to include numerous high grade balancing valves for the most diverse applications and flow rates, such as the innovative TacoSetter Hyline made from high quality plastic.



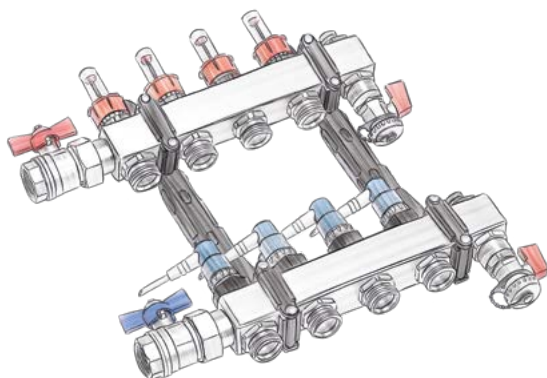
AREA HEATING SYSTEMS – FOR PERFECT INTERACTION

Innovative technology and first class components ensure reliable, demand-dependent and cost effective energy provision.

Fully pre-assembled TacoSys manifold systems ensure optimum energy distribution throughout the building.

The TacoSys Pro heating circuit manifold is fitted with the innovative TopMeter Plus (balancing valve) and TacoDrive (actuator) products, making it also completely connection-ready.

In the TacoSys High End version, the familiar TopMeter valves ensure perfect hydronic balancing. TacoSys High End and Value are ideal in combination with the NovaDrive and TopDrive actuators, as well as the NovaStat room thermostats. They interact to produce a pleasant, individual indoor environment.

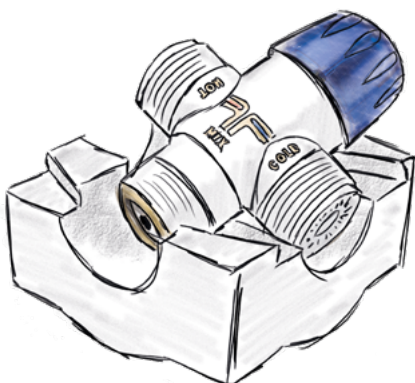


VALVES AND ACCESSORIES – FOR OPTIMUM SAFETY

Many compact auxiliary devices are necessary to ensure that a heating or cooling system runs smoothly.

Thermostatic mixing valves from Taconova reduce high DHW temperatures to a constant, non-scalding temperature at the draw-off point.

TacoVent valves automatically vent heating systems, as only continually vented and cleaned heating systems operate with the highest level of efficiency.



PUMP TECHNOLOGY

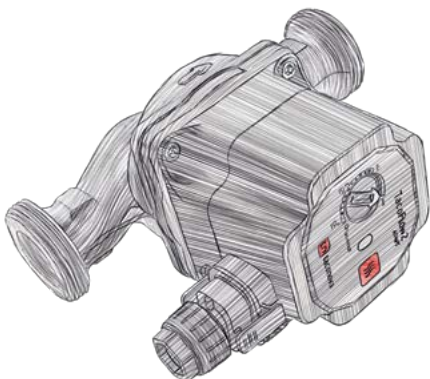
Circulators are at the heart of hydraulic heating and cooling systems in buildings. They ensure the reliable transport of the required energy and thus provide a comfortable building climate.

A wide range of suitable circulators in combination with balancing valves from Taconova ensure efficient heat distribution. This increases the energy efficiency of heating systems and therefore reduces operating costs.

Renowned customers have been using these reliable, high quality products for many years.

Circulation pump technology has been part of Taconova's comprehensive range of expertise since 2019. This proven, yet innovative, technology has been developed and refined over many years at Taconova's parent and subsidiary companies Taco Inc. and Taco Italia.

All circulators feature a plug & play connection.

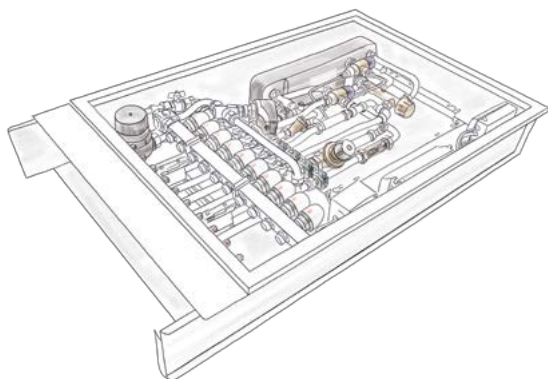


TACOTHERM DUAL HEAT INTERFACE UNITS

The TacoTherm Dual heat interface unit with its modular design is responsible for the distribution of heating energy in an apartment, and decentralised DHW heating based on the instantaneous water heating principle.

A variety of modules are available for supplying radiator and/or underfloor heating systems, and can be selected such that only those functions which are really necessary are included.

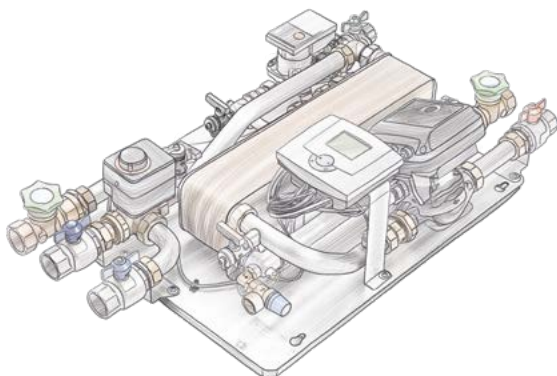
The modules supply hygienically heated domestic hot water as and when required, and are capable of regulating to the required outlet temperature. They are available as individual domestic hot water or heating modules, or as a combi unit. This decentralised system is therefore a true all-rounder, not only at the design and installation stage, but also later in practical usage.



TACOTHERM FRESH DOMESTIC HOT WATER STATIONS

Domestic hot water stations heat drinking water on demand to the required temperature using the instantaneous water heating principle. This means that no domestic hot water is stored, therefore there is no risk of legionella formation.

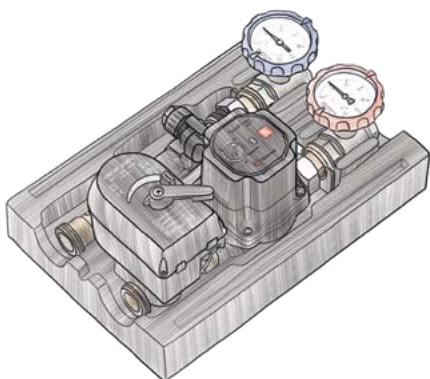
The connection-ready TacoTherm Fresh domestic hot water stations have all application ranges covered, from an individual residential unit up to larger residential buildings or hotels. All versions are also available as the higher performing "X" model, which is equipped with a larger heat exchanger and correspondingly more powerful primary circuit pump. The stations can be used in cascades and are therefore suitable for higher output ranges.



TACOHEAT MIX HEATING CIRCUIT PUMP ASSEMBLIES

Heating circuit pump assemblies are units consisting of several components which can be quickly and easily installed in the heating circuit.

The TacoHeat Mix heating circuit pump assembly can be fitted to a buffer cylinder, for example, to save space. In combination with a TacoSol Circ solar loading station and a TacoTherm Fresh domestic hot water station, it ensures that underfloor heating manifolds or radiator heating systems are supplied with the right temperature. Products developed by Taconova are optimally matched to one another and therefore interact perfectly. The TacoHeat Mix is suitable for use as a link between heat generators and heat consumers, and ensures seamless interaction between these units.





SYSTEM TECHNOLOGY

Decentralised Heat Interface Units

The modular design of the TacoTherm Dual offers optimum functionality and allows you to arrange the modules however it suits you best.



- TacoTherm Dual Piko PM2 / Smart Connect / Smart Hybrid**
- Domestic hot water heating, underfloor heating manifold and separate radiator connection in one combi unit



- TacoTherm Fresh Piko PM2 / Smart Connect / Smart Hybrid**
- Electronically or hydraulically controlled DHW heating
 - Options warming module / DHW circulation / ModBus connectivity



- TacoSys Piko**
- Heating module with 2 - 12 connections
 - Fixed value or weather-compensated control



- TacoTherm H 3000E**
- Domestic hot water heating
 - Hydraulically optimal heat distribution
 - Integrated recording of energy and water consumption



- TacoTherm Fresh Nano2**
- Proportional volume controlled domestic hot water module with options such as standby module and anti-scalding protection. Can be used in particular as a replacement for a wall mounted gas boiler.

Centralised Heat Interface Units

Connection-ready domestic hot water stations for demand-dependent DHW heating based on the instantaneous water heating principle.



- TacoTherm Fresh Mega3 / Mega3 X**
- Capacity: 22 l/min / 34 l/min
 - Can be cascaded



- TacoTherm Fresh Peta2 / Peta2 X**
- Capacity: 63.5 l/min / 98 l/min
 - Can be cascaded



Circulation modules

Circulation modules for combination with centralised heat interface units for hygienic DHW heating following the instantaneous water heating principle.



- TacoTherm Circ Mega / Peta**
- Capacity: 16 l/min
 - Can be cascaded

Solar loading stations

Connection-ready pump assemblies with high efficiency pumps for direct installation in the solar circuit of solar thermal systems.



- TacoSol Circ ER HE**
- Version: single line
 - Available with or without safety assembly



- TacoSol Circ ZR HE**
- Version: two-line
 - Available with cover or support for controller

Storage loading stations

Connection-ready storage loading stations with integral system separation for charging individual zones of a buffer cylinder or charging two buffer cylinders via a solar thermal system.



- TacoSol Load Mega / Mega L**
- Heating output: 12.5 kW
 - Collector area: approx. 25 m²

Heating circuit pump assemblies

Connection-ready pump assemblies for direct installation in the heating circuit of heating systems.



- TacoHeat Mix**
- Pump assembly with mixer, actuator, high efficiency pump and shut-off ball valves with thermometer for heating circuits

PUMP TECHNOLOGY

High efficiency circulation pumps

The entire range of Taconova circulation pumps is driven by synchronous motors with permanent magnet technology, which ensures efficient operation.



- TacoFlow2 (C A)**
- Heating circuit pumps
 - Pump head 6 m / 7 m | DN 15 / 25 / 32



- TacoFlow2 ADAPT**
- Heating circuit pumps
 - TacoAdapt™ function
 - Pump head 6 m / 7 m | DN 15 / 25 / 32



- TacoFlow2 eLink**
- Heating circuit pumps
 - TacoAdapt™ and eLink function
 - Pump head 6 m | DN 25 / 32



- TacoFlow3 GenS (OEM Version)**
- Heating circuit pumps
 - Controlled by an external PWM signal with profile „heating“ or „solar“
 - Pump head 8.5 m | DN 15 / 25



- TacoFlow Pure (C)**
- DHW circulation pumps for potable water systems
 - 6 3/4" / G 1" / Rp 1/2"



- TacoFlow2 Solar**
- Circulation pumps for solar thermal systems
 - Pump head 6 m / 7 m | DN 15 / 25



- TacoFlow3 GenS Solar (OEM Version)**
- Circulation pumps for solar thermal systems
 - Controlled by an external PWM signal with profile „Solar“
 - Pump head 8.5 m | DN 15 / 25



- TacoFlow3 MAX**
- Heating and cooling circuit pumps
 - Pump head 6 m / 8 m / 10 m | DN 25 / 32



- TacoFlow3 MAX PRO**
- Heating and cooling circuit pumps
 - Pump head 6 m / 8 m / 10 m | DN 25 / 32

HYDRONIC BALANCING

Hydronic balancing – static

Balancing and shut-off valves for static hydronic balancing and flow rate control at the consumer or in system sections.



- TacoSetter Bypass 100**
- DN 15 - 50 | 2 - 200 l/min



- TacoSetter Bypass Solar 130/185**
- Suitable for solar thermal systems
 - DN 20 - 32 | 2 - 70 l/min



- TacoSetter Bypass Flange**
- DN 65 - 100 | 60 - 650 l/min



- TacoSetter Inline 100/130**
- DN 15 - 25 | 0.3 - 90 l/min



- TacoSetter Rondo**
- DN 15 | 0.6 - 8 l/min



- TacoSetter Tronic**
- Digital flow rate and temperature measurement
 - DN 20 | 2 - 40 l/min



- TacoSetter Hyline**
- Made from glassfibre reinforced plastic [e.g. for geothermal applications]
 - DN 25 - 32 | 10 - 80 l/min



- TacoControl FlowMeter**
- Flow meter with direct display



AREA HEATING SYSTEMS

Manifold systems

The pre-assembled TacoSys manifold systems are designed for 2 to 12 heating circuits.



- TacoSys Pro**
- Underfloor heating manifold with TopMeter Plus balancing valves and TacoDrive actuators



- TacoSys High End**
- Underfloor heating manifold with TopMeter valves and manually adjustable valves



- Mixing stations**
- With high efficiency pump and external safety temperature limiter

Actuators

The extensive product range, arranged by price and performance, offers a solution for every requirement.



- TacoDrive NC**
- Compact electro-thermal actuator
 - Operating mode: normally closed (NC)



- TopDrive NC**
- Electro-thermal actuator
 - Operating mode: normally closed (NC)



- NovaDrive NC/NO**
- Electro-thermal actuator
 - Operating modes: normally closed (NC) and normally open (NO)

Balancing valves

TopMeter balancing valves allow the flow rate to be directly adjusted, displayed and shut off.



- TopMeter Plus**
- The last flow rate set can be reproduced at any time
 - Flow balancing stem: 1/2"



- TopMeter Supply/Return**
- Versions: flow/return
 - Balancing stem: 3/8" and 1/2"

Room thermostats and connection modules

Where complex requirements are made of the indoor environment in a building, the room thermostats can be combined with extendible connection modules.



- NovaStat EL**
- Electronic room thermostats for controlling actuators



- NovaMaster EL**
- Connection module for linking electro-thermal actuators to room thermostats

VALVES AND ACCESSORIES

Mischventile

The thermostatic mixing valves are used in solar, sanitary and heating applications.



- NovaMix Value**
- Control ranges from 20 - 50 °C, 45 - 65 °C and 35 - 70 °C with high control accuracy
 - DN 15 / 20 / 25
 - 26 - 55 l/min



- NovaMix Standard / High Capacity**
- Control ranges from 20 - 40 °C, 20 - 70 °C and 30 - 70 °C
 - DN 20 / 25 | 22 - 53 l/min / 102 l/min



- NovaMix Compact**
- Control ranges from 30 - 70 °C and 30 - 50 °C
 - DN 15 | 25 l/min



Air vent valves

Continuous and automatic venting.



- TacoVent AirScoop**
- Continuous air removal using baffle plate



- TacoVent HyVent**
- Continuous air removal using float air vent valve
 - Automatic venting of systems during filling, draining and in operation



- TacoVent Vent**
- Radiator bleed valve
 - Quick manual bleeding
 - Integral shut-off device

Valves

Taconova valves can be used in a broad range of HVAC systems.



- NovaZone Ball**
- Flow rate control
 - 2-way / 3-way [with or without manual adjustment]



- NovaZone Valve**
- Zone valve with electric motorised actuator and spring return
 - 2-way / 3-way

MORE INFORMATION ABOUT TACONOVA

Information about other Taconova products can be found in our complete catalogue, online at **taconova.com**

Ask your dealer about Taconova products or find a dealer near you at **taconova.com**



Taconova Group AG

Neunbrunnenstrasse 40
8050 Zurich, Switzerland
T +41 (0)44 735 55 55
F +41 (0)44 735 55 02
info@taconova.com

taconova.com

Taconova UK Limited

AMP Technology Centre
Brunel Way
Rotherham | S60 5WG
T +44 (0) 114 231 3700
adminuk@taconova.com

taconova.uk