



## THE JOURNEY CONTINUES...

I have been working in exhaust technology for 35 years. My first installation of a plastic exhaust pipe in Switzerland was in 1989. It was a sensation for German regulations, because it was a normal oil pipe with reduced exhaust gas temperature. In 1990, I started selling plastic flue gas pipes in Germany. I was looking for the few condensing boilers, but the range offered by manufacturers was still very limited. Slowly, more and more appliances came onto the market and the authorisation for standard fireplaces made it possible to develop the market successfully. I then founded ATEC in 1999. Initially only with diameters DN 80 and DN 100 and today DN 60-250 mm. In the years that followed, the product range became more and more extensive, with the addition of shaft systems, flue gas heat exchangers and silencers.

Four years ago, the European energy transition was announced for the next 10 - 15 years. This was followed by the development of our expertise in the areas of heat pumps, low temperature radiators and acoustic enclosures. After successfully entering the market, we realised that there was still plenty of potential for further products. Discussions with partners confirmed that we should follow the same path as ATEC. Described in a few words: A „super product“, inexpensive, open to devices and systems. Not an easy challenge, but we succeeded.

The unique  
**Hsen@Boxx** has  
been created.



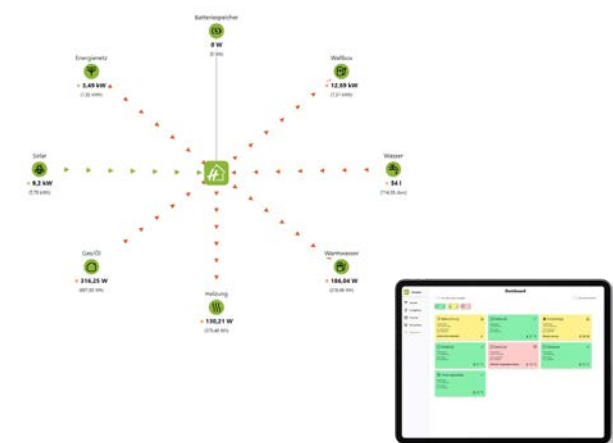
I look forward to another  
inspiring partnership.

Yours Guido Jobst



**ATEC Hsen@Boxx:** The intelligent solution for smart energy efficiency and remote control. The Hsen@Boxx from ATEC is the progressive smart home solution that enables households and companies to utilise energy efficiently and sustainably. In accordance with the requirements of §14a EnWG, the Hsen@Boxx offers remote control of consumption devices, which helps you to fulfil the regulations of the legislator.

Thanks to real-time insights, users can monitor the status of their system at all times and view maintenance and fault information immediately. At the same time, installers and installation companies gain real added value through insights into customers' real-time data: they proactively detect faults and can react more quickly, which optimises service and increases customer satisfaction.



The Hsen@Boxx networks all compatible devices in the building, from heating systems and lighting to charging points for electric vehicles, and supports a variety of communication protocols (including Matter, Zigbee, KNX, ModBus, EEBus, WiFi and many more). The intuitive user interface allows clear control of energy flows for maximum savings and convenience.

With the Hsen@Boxx, ATEC is setting new standards in efficiency, data security and sustainability - the perfect solution for the responsible energy consumption of tomorrow.

# GANZHEITLICH VERBINDEN WIR...

EEBUS

WiFi

MQTT

OCPP

zigbee

THREAD

Bluetooth®

matter

M-Bus

Modbus

CANbus

KNX

Hsen®  
Boxx



## Umwelt

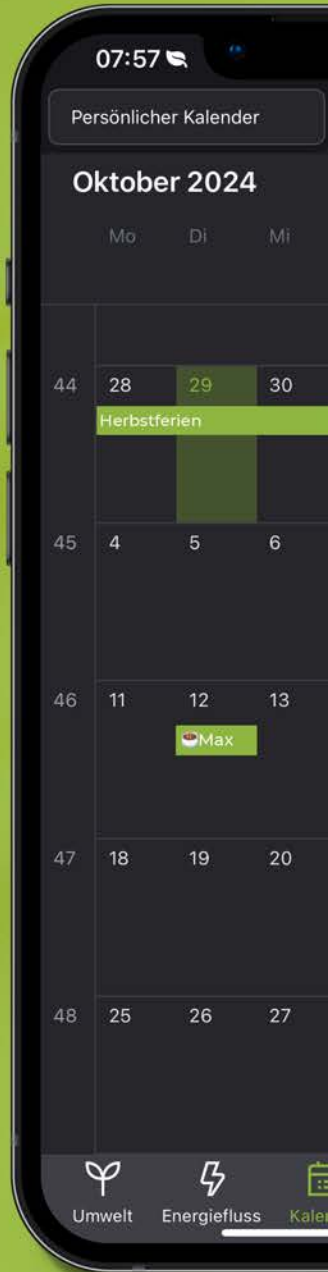
- Geräte verbinden
- Standards/Protokolle
- LTE-Fallback

## Energiefluss

- Umfangreiche Übersicht
- Intelligenter Energiefluss
- Betriebliche CO<sub>2</sub> - Bilanzierung
- § 14a EnWG konform

## Kalender

- Persönlicher Kalender
- Gruppen- und Familienkalender
- Einkaufsliste
- Alle Feiertage & Ferien
- Privater Kalender
- Automatische Zeitzonen



App Laden



JETZT ONLINE!

*Hsenenso* APP



# NEW PRODUCTS FOR THE ENERGY TRANSITION

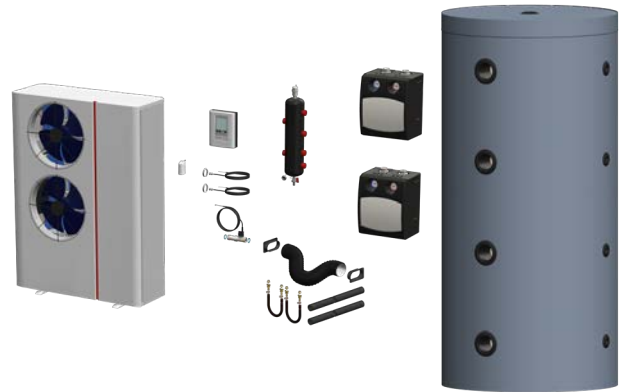
**eWÄRME-set, with eHEAT , eTWIN etc.**

**58002013 8,5 kW, PG18, € 11.000**

**58002014 12,5 kW, PG18, € 12.500**

**consisting of:**

- **eHEAT** heat pump 8.5 or 12.5 kW with internal storage tank
- **eTWIN** heat pump cylinder 200-30 L
- **eFLOWBOX** pump group
- **eCONTROL** system controller
- Connecting components
- Hsen®Boxx EMS + Hosenso-Live for 1 year



**eSILENT BASIC design protective cover**

- 24 variants
- from € 1.023
- damping up to up to 5 dB(A)
- RAL available on request
- Accessories available

**eSILENT PRISMA design protective cover**

- 36 variants
- from € 1.699
- damping up to 8 dB(A)
- RAL available on request
- Accessories available



**eSILENT acoustic enclosure**

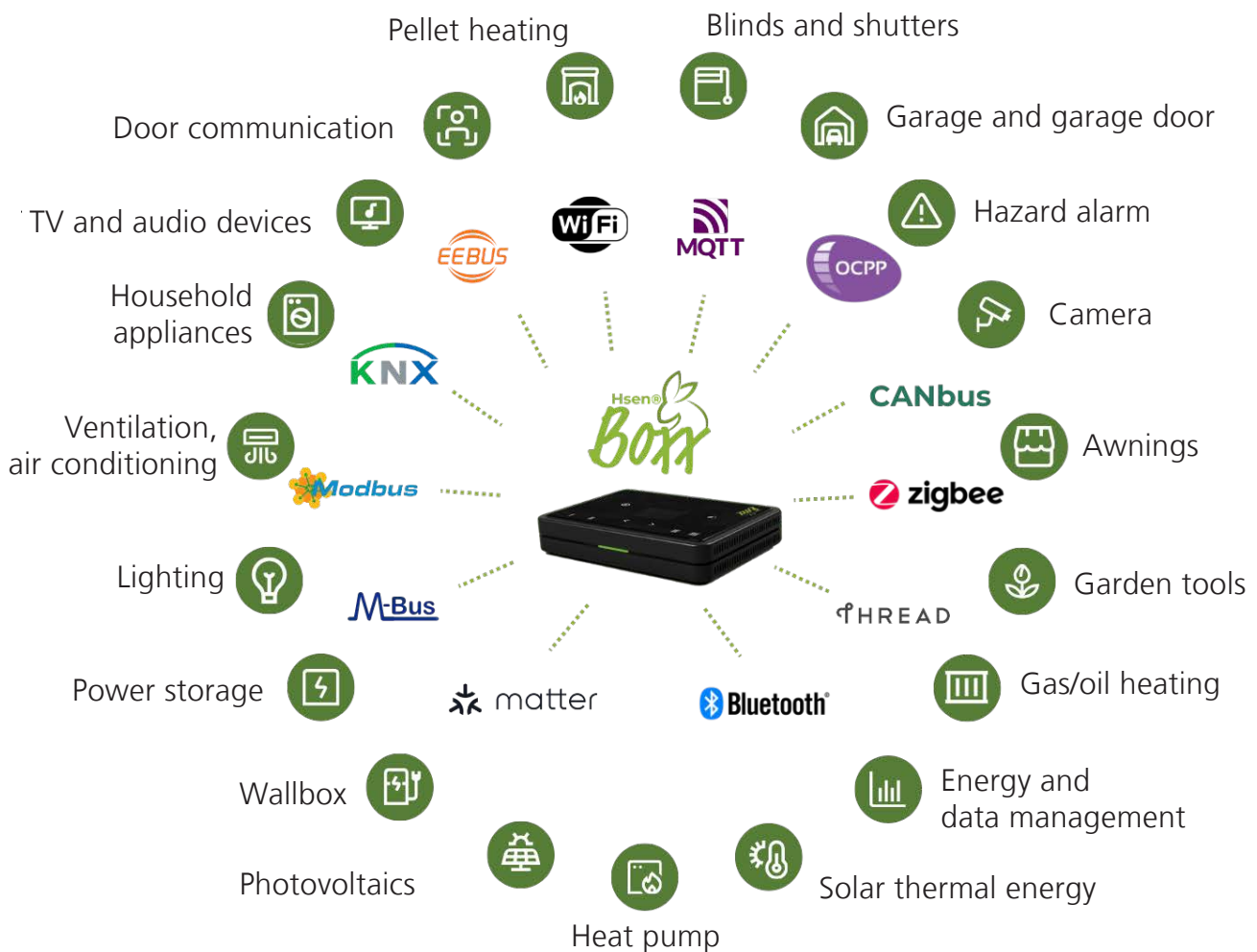
- 128 variants
- from € 2.999
- damping up to up to 25 dB(A)
- RAL available on request
- Accessories available

# NEW PRODUCTS FOR THE ENERGY TRANSITION

## High-performance storage system incl. inverter

**52000102** PG32, € 2.225

- 5 kWh capacity, 2 kW PV power
- Up to 4 modules á 500 W
- 800 W output power
- IP65 for outdoor use, 1-phase
- Hsen®Boxx EMS + Hosenso-Live for 1 Jahr



**52000010** PG32, € 235

- LTE fallback in the event of a landline failure
- § 14a EnWG compliant Ethernet
- WLAN 2.4 & 5 GHz
- Matter WiFi & Thread
- Zigbee
- Various smart meter standards



We offer suitable gateways for all devices that are not yet smart.  
Please do not hesitate to contact us.



### Thermal current set

**52000120** PG32, € 4.777

consisting of:

- 2x modules thermal current 89.0
- High-performance storage system 5 kWh incl. inverter
- Battery module 2 x 5 kWh
- Hsen@Boxx EMS + Hosenso-Live for 1 year



### High-performance storage set

**52000110** PG32, € 6.777

consisting of:

- Inverter, 18 kWh PV power  
2x MPP tracking, 12 kW output power  
3-phase, island operation, black start capable
- Battery module 2 x 5 kWh
- Hsen@Boxx + Hosenso-Live for 1 year

### Kinetic high-performance storage AMPERAGE AC/ DC

**52009200** PG95, € 108.500

Multi-patented flywheel mass accumulator with 1,000,000 charging cycles / 25 years of service life. Sustainable, no critical raw materials, no chemicals. Non-flammable, suitable for hot and cold climates. Output: from 200 kW. **Generation of power peaks:**

Power boost over 30 sec. to 15 min., positive and negative power, alternative to power grid expansion. **Increased efficiency:** Utilisation of recuperation potential and integration of fluctuating renewable energies. **Reduction in operating costs:** Lower grid charges (power prices) through even power consumption.



### NAEXT HEXAGON battery storage 72 kWh

**52009000** PG95, € 58.300

- Nominal capacity 72 kWh, guaranteed usable capacity 66 kWh
- Mains connection 400 V AC
- Bidirectional inverter with up to 11 kW power, 22 kW optional
- EV charger power: 11 kW AC, TYPE 2 connection
- 2nd-life energy storage system, developed and produced in Germany
- Including prefabricated concrete foundation with integrated heat exchanger
- Outdoor installation due to water-protected housing
- Delivery ready for operation, installation and commissioning within one day
- Hsen@Boxx EMS + Hosenso-Live for 1 year

### NAEXT QUADRAGON battery storage system 648 kWh

**52009100** PG95, € 278.000

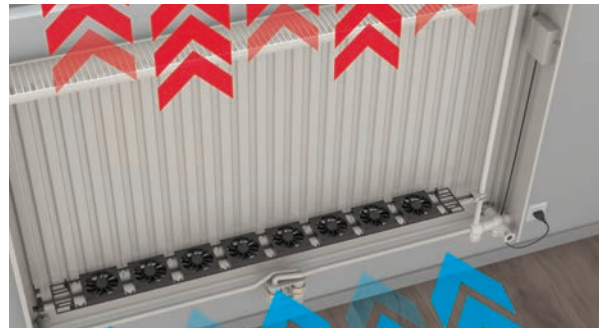
- Nominal capacity 648 kWh, guaranteed usable capacity 600 kWh
- Mains connection 800 V AC or 400 V AC
- Bidirectional inverter with up to 80 kW power (120 kW optional)
- EV charger power: 120 kW DC (240 kW optional), CCS connection
- 2nd-life energy storage system, developed and produced in Germany
- Including prefabricated concrete foundation with integrated heat exchanger
- Outdoor installation in an insulated container
- Delivery ready for operation, installation and commissioning within one day



# ...MORE ENERGY FLOW PRODUCTS

## **eVENT Low-temperature radiators** **The solution for heat pumps**

- Fast, cost-effective and clean retrofitting in existing buildings
- Automatic mode for silent comfort mode
- or low flow temperatures
- or heating and cooling
- In 28 variants, also vertical and with Mirror surface



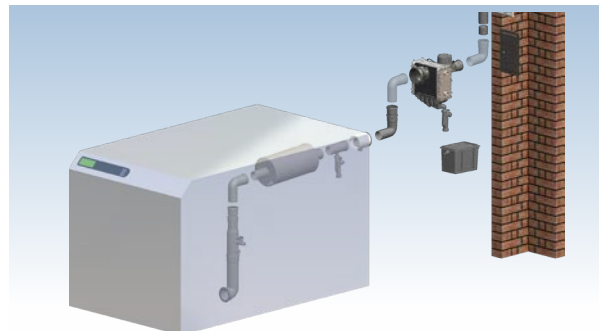
## **eXENT Ventilation + heating + cooling 3 in one device for hotel, office, school...**

- Quick and easy installation
- simple selection with only 2 overall lengths
- 6 variants (in white and anthracite)
- Centralised control



## **Solutions for flue gas technology** **Advantages and ideas...**

- for gas and oil condensing boilers
- for combined heat and power plants (CHP)
- for fuel cells
- for hall heating systems
- for other customised applications



## **Hanse-Wärme, MOBICOP 12 AND 50** **The first mobile heat pumps**

- for construction site heating
- in case of damages
- for rent or purchase
- for heating and cooling
- Cost-effective, fast, flexible and sustainable



**ATEC GmbH & Co. KG**  
Liliencronstraße 55  
21629 Neu Wulmstorf  
Phone +49 40 700100-60  
[info@atec-energiefluss.de](mailto:info@atec-energiefluss.de)  
<https://atec-energiefluss.de>