



R290

Natural refrigerant
Environmentally friendly

**The environmentally
friendly refrigerant -
new level reached**

SUSTAINABLE HEATING EFFICIENT AND FORWARD-LOOKING

Heat pumps from WATERKOTTE, Made in Germany

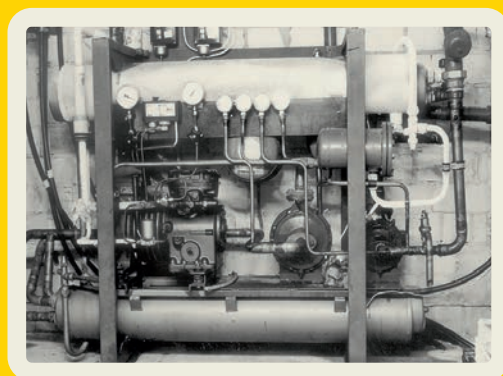


Pioneer yesterday, leader today, innovation for tomorrow

German engineering for a
greener future

From the initial idea to the leading solution: 60 years of heat pump expertise

As a pioneer in heat pump technology, WATERKOTTE has been setting standards for industry and crafts as a driver of innovation for almost 60 years. Environmentally friendly, economical, innovative - these requirements gave Klemens Oskar Waterkotte the idea to develop a new type of heating system in 1968: The first German heat pump. Shortly afterwards, he set up his own business with his idea and laid the foundations for today's corporate success of WATERKOTTE GmbH. As part of the NIBE Group, WATERKOTTE now develops holistic system solutions and sustainable supply concepts based on the experience gained back then.



Our conviction remains: Even after almost 60 years, we still rely on the best and most environmentally friendly heating system as the heart of all developments: the heat pump.





Numerous testimonials

With a wide range of outputs from 1 - 300 kW as series-produced, cascable individual units, WATERKOTTE offers the right heat pump for every building project and the right solution for every challenge. Our references include national and international projects - hotels, banks, hospitals and apartment buildings. Our products are characterized by the best performance values, multiple award-winning product designs and the latest control technology. With the relocation of the main site to Bochum, we have also ensured a significant increase in production capacity since 2025. We offer solutions for your challenges.

CONSUMER LINE

INDUSTRIAL LINE

Our product lines stand for future technology, quality and sustainability – perfectly tailored to the respective needs.

”

There are many challenges, but even more opportunities.

”

A partnership for success

From the outset of planning, we support architects, planners, energy suppliers, and specialized tradesmen with our expertise.

To ensure that both our environment and each user can benefit from the full potential of our heat pumps, professional planning and expert, technically flawless installation are essential. In fact, our partnership begins even before the planning: with the WATERKOTTE Academy's well-developed training concept, we have been successfully fulfilling our responsibility to help shape an energy-efficient future for decades. From installers to architects and planners, we provide training for the use of environmentally friendly heat pumps and share the know-how we have built up over decades!



Our promise

We convince with quality: a detailed system history for each WATERKOTTE product is standard. The documentation extends from production to installation to maintenance and service. Herewith we guarantee you the highest quality and efficiency, and not only in system operation: installers have the option of viewing the digital system history, organizing service calls sustainably and effectively, or even conducting them entirely online by means of the RemoteCare remote maintenance system. This proven approach opens up opportunities and capacities – for growth, profitability and a successful market differentiation.



Efficient performance, minimal impact

Selecting the right refrigerant is crucial for the performance, efficiency and environmental friendliness of modern heat pumps. Modern refrigerants meet the challenges of energy efficiency and sustainability. They have an especially good environmental balance thanks to their low Global Warming Potentials. At the same time, they score in terms of energy efficiency: thanks to optimized thermodynamic properties, modern refrigerants enable high-performance and economical solutions for a variety of applications.



Maximum safety through innovative technology

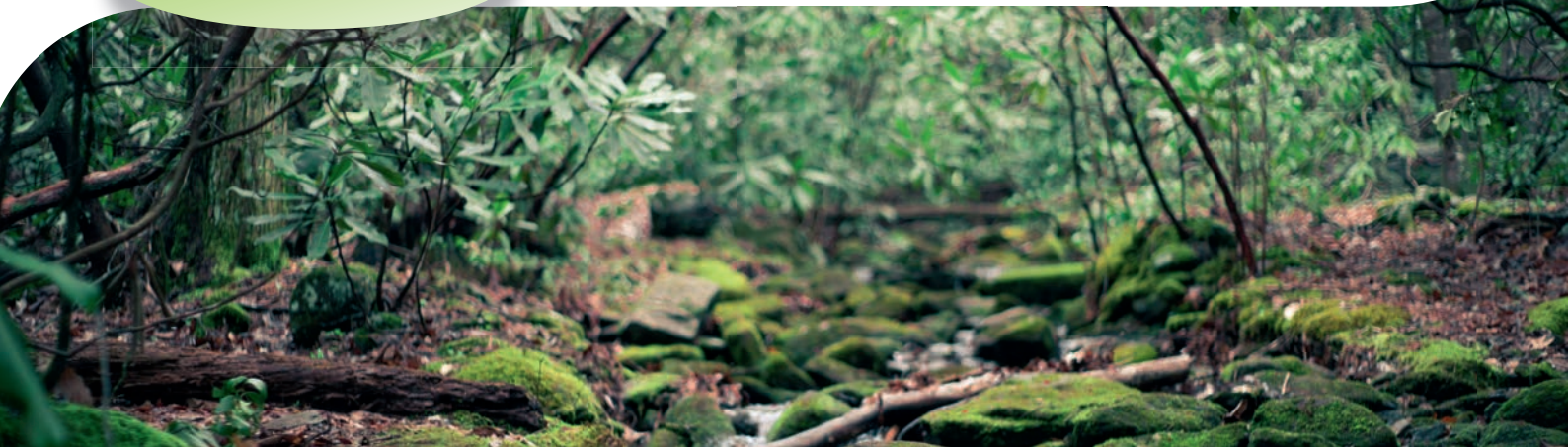
As a natural refrigerant, R290 is biodegradable and PFAS-free. With the latest safety concepts and optimized system designs, we are setting new standards in safe application, even for the strictest requirements in the building sector.

Long-term future-proof technology

The growing demand for environmentally friendly and sustainable refrigerants makes R290 the future-proof choice. Our heat pumps are already equipped for tomorrow's technologies and standards. Choose a solution that not only protects the environment, but is also tailored to the long-term needs of modern buildings.

Thinking about tomorrow with R290 today

R290 shows how environmental friendliness and innovation can go hand in hand. It combines ecological advantages with technical excellence. With our R290 heat pumps, you can take a step towards a more climate-friendly future – while also relying on maximum efficiency and state-of-the-art technology. The resource-saving design requires only the smallest amounts of refrigerant.





Basic Line Air Bloc 3 – 12 kW

The air-to-water heat pump **Basic Line Air Bloc** combines efficient heating, cooling and domestic hot water preparation. The compact design is rounded off by a modern, multi-award-winning design. With an **output range of 3 to 12 kW** and flow temperatures of up to 70 degrees, the Basic Line Air Bloc is an economical system for new and renovated single-family homes and duplexes. With the **natural refrigerant R290**, the series is particularly sustainable, efficient and future-proof, while at the same time providing maximum safety thanks to its innovative design and effective safety mechanisms.

- Environmentally friendly, sustainable refrigerant R290 with a very low Global Warming Potential
- Outstanding operational reliability thanks to innovative design and effective safety mechanisms
- Simple and safe installation, no certification needed
- High-quality control unit
- Low operating costs thanks to SCOP values up to 4.9



EcoTouch Air Bloc 5 – 14 kW

With flow temperatures of up to 75 degrees, the high-end air-to-water heat pump **EcoTouch Air Bloc** offers outstanding efficiency in new buildings and renovation projects. With integrated heating, cooling and domestic hot water preparation, all areas of application are optimally covered in a **power range from 5 – 14 kW**. It is possible to expand the power in a cascade. The **natural refrigerant R290** ensures sustainability and efficiency. Users also benefit from the model's future-proof design.



- Environmentally friendly, sustainable refrigerant R290 with a very low Global Warming Potential
- Excellent operational reliability, effective safety mechanisms
- Outstanding operational reliability thanks to innovative design incl. 6 kW heating rod
- Simple and safe installation, no certification needed
- Low operating costs thanks to SCOP values up to 5.4
- Extremely low noise emissions



EcoTouch Geo Cube 6 – 19 kW

Pioneering achievement: the high-end heat pump **Eco-Touch Geo Cube** speaks innovation: as the first R290 geothermal heat pump in the consumer sector, the product plays a leading role. Heating, hot water and the integrated natural cooling ensure maximum comfort. The **excellently designed outdoor installation** of the cooling circuit sets new standards in terms of efficiency and safety. High flow temperatures of up to 80 degrees and an **output range of 6–19 kW** qualify the EcoTouch Geo Cube for use in new buildings and renovation projects.



- Environmentally friendly, sustainable refrigerant R290 with a very low Global Warming Potential
- Outstanding operational reliability thanks to innovative design
- Outdoor unit with minimal space requirements and simple, safe installation without refrigeration certificate
- Low operating costs thanks to SCOP values up to 7.0
- Extremely low noise emissions
- Inverter control for demand-oriented performance

Industrial Line 8060 and 8120 60 - 120 kW



Optimum performance with minimal energy consumption and maximum environmental friendliness – German engineering excellence in a single product. The new **R290 heat pumps** in the Industrial Line set new standards in heating technology. **“Made in Germany”**, they impress with **quality, reliability and efficiency** – while taking up very little space. With up to 120 kW - and more as a cluster - the series covers the most demanding requirements thanks to inverter control as needed. At the same time, the Industrial Line meets the **highest environmental and safety standards** by using R290. The control concept guarantees exceptional safety and operational continuity.

- First R290 Industrial heat pump installed indoors, made in Germany
- Most compact design, no machine room required according to DIN-EN-378
- Multi-level safety concept including integrated ventilation safety system
- High-quality control unit with touch display
- Innovative control concept for highest performance and maximum operational reliability and continuity
- Eligible for German funding

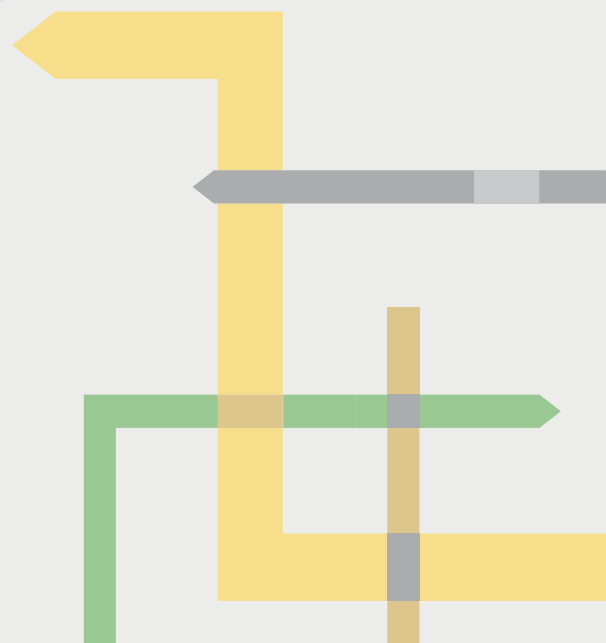
WATERKOTTE control project management systems

Especially in large projects, the demands on the networking, control and monitoring of the installed building technology are increasing. The WATERKOTTE control system brings everything together and ensures **maximum system efficiency and operational reliability** through **integrated and automated control of the technical building equipment**. We offer control concepts for every size of system and every system requirement. A corresponding visualization offers a **complete overview and control** - from heat source and alarm management to hot water and temperature control. Everything from a single source for maximum efficiency!

INDUSTRIAL LINE



- Efficient software and control
- Expansion options
- Project landing
- Remote service by our experts
- Individual project visualization incl.
 - Data logging
 - Alarm manager
 - Source manager
 - File storage
 - User administration
 - Ticket system





WATERKOTTE GmbH

Sophie-Opel-Straße 20

D-44803 Bochum

info@waterkotte.de

www.waterkotte.de