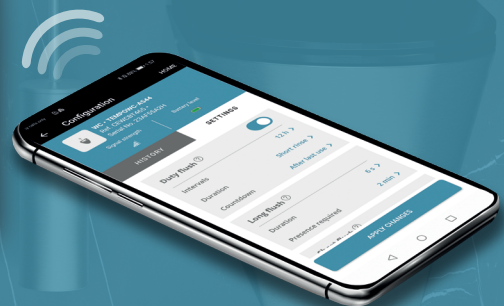


# NEW PRODUCTS 2025

INNOVATION AT ITS SOURCE



**DELABIE**



## NEW PRODUCTS 2025 DELABIE



Our ambition: Water savings, Innovation, Performance, Design...  
**all with a 30-year warranty.**

### DELABIE awarded a gold EcoVadis medal



In 2024, DELABIE received a **gold EcoVadis medal** in recognition of our achievements and commitment to Corporate and Social Responsibility (CSR).

This prestigious award reflects our investment in the categories of; the environment, social and human rights, ethics and responsible purchasing. This honour represents an important step in our ongoing commitment to improving our sustainability and ethical performance, whilst always maintaining the highest standards. This award positions DELABIE within the top 5% of high-scoring companies worldwide, and within the top 1% of companies in our sector of activity (out of 5,062 companies).

**Water and energy savings, eco-friendly and stylish product design**, and ease of installation and maintenance, are all fundamental elements of our company ethos. This means we can provide **constant support for public & commercial buildings and healthcare facilities in their daily challenges**. Our DELABIE objective is to exceed your expectations, by taking our environmental impact into account at all stages of our process, from design to production, through delivery and final use. DELABIE is committed to **using sustainable raw materials that are recycled and recyclable** when creating our products. DELABIE products are the very antithesis of planned obsolescence. They have been designed to **last as long as possible** and to be particularly **easy to repair**, equipping them with a significant ecological advantage. DELABIE offers a **30-year warranty** on products, and is committed to ensuring they can be **repaired for 50 years!**

Finding unique solutions, creating new technologies, registering patents, respecting environmental and international standards: at DELABIE, **Research & Development is our driving force**. User and system hygiene is at the very core of our solutions. Our products are designed and developed to guarantee **complete hygiene in public and commercial places**.

Our focus in 2025, as it was in 2024, is to design new products which remain faithful to our trademark quality, renowned in France and around the world, through **remarkable design and dependable manufacturing**. For every project, for every issue, there is a DELABIE solution made for you. Would you like to find out more about DELABIE? **Head to [delabie.com](https://delabie.com)**, where you can easily find all of our products, and can freely download **a large number of files and BIM objects**.

Our catalogues are, of course, available on request or on our website.

### DELABIE, a manufacturer's expertise

DELABIE, a 100% family-owned French company, established in 1928, is **the European market leader in tapware and sanitary accessories for the non-domestic market**. It has a specialised offering for this market, with five ranges: Water controls for Public and Commercial places, Water controls for Healthcare facilities and Care homes, Accessibility and Washroom accessories, Stainless steel sanitary ware and other Specialist water controls.

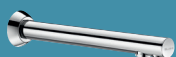
Over 2,000 DELABIE manufactured products, **internationally renowned**, are exported from its factory in France to more than 90 countries. The company has 10 subsidiaries worldwide: Germany, Austria, BeLux, the Netherlands, United Kingdom, Portugal, Spain, Poland, United Arab Emirates (Dubai) and China (Hong-Kong).



## PUBLIC AND COMMERCIAL PLACES / PP. 04 TO 09



**DELABIE** Connect



**BINOPTIC** recessed  
electronic basin tap



**BIOFIL** chrome-  
plated shower  
head

## HEALTHCARE FACILITIES / PP. 10 TO 11



**Hygienic waste  
with membrane**  
without water level

## ACCESSIBILITY / ACCESSORIES / PP. 12 TO 17



**3-in-1 internal unit**  
for mirror cabinets



**HIGHFLOW** Compact  
hand dryer



**Soap dispenser**  
push-action operation

## SANITARY WARE / PP. 18 TO 19



**Drinking fountain**







TEMPOMATIC dual control recessed electronic WC flush system **464SBOX + 464000** - S21 S wall-hung WC pan **110310** - Slimline black toilet seat lid **102819**  
Wall-mounted toilet brush set with lid **4051S**





**NEW**  
 CONNECTED PRODUCT,  
 PEACE OF MIND  
 GUARANTEED

Featured product: Refs. 464SB0X + 464000

## DELABIE CONNECT WASHROOM MANAGEMENT AT YOUR FINGERTIPS

### Easy to install and maintain

Thanks to our innovative technology, you can view the operation history of your DELABIE cistern-less flush system, adjust settings, and then easily duplicate them for your other WCs, all from your smartphone or tablet.

### Comfort

The DELABIE Connect App is intuitive and simple to use. The presence detection distance can be adjusted directly via the App, allowing for tailored configuration in any setup (standard or accessible toilet pans, various room dimensions, etc.).

### Impeccable hygiene

The duty flush settings can be adjusted to determine: the length of the flush, whether it is activated at a set time or following the last user, the frequency, and its deactivation. The duty flush serves to purge the pipework, reducing bacterial development.

### Proven water savings

The length of short and long flushes can be adjusted, as can the presence detection timing for long flush activation.



Set duty  
 flush frequency



Configure  
 presence  
 detection



Adjust  
 flush  
 volume



## DELABIE Innovation

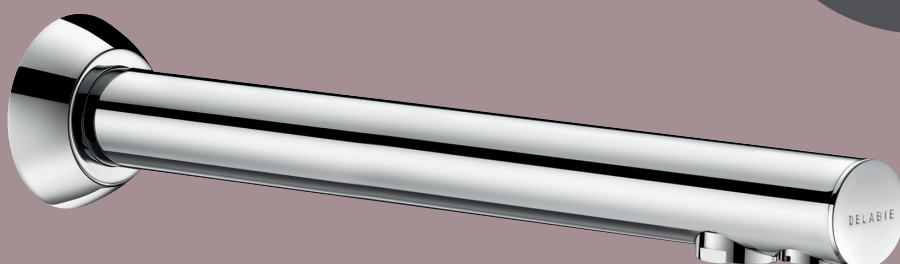
Easy configuration of your Bluetooth® electronic tapware and washroom fittings from your smartphone or tablet.





BINOPTIC recessed electronic basin tap **379ENCL** - ALGUI countertop washbasin **120110** - Wall-mounted electronic soap dispenser **512066S**  
HIGHFLOW air pulse hand dryer **510622S**

**NEW**  
STYLE &  
ELEGANCE



Featured product: **Ref. 379ENCL**

## BINOPTIC RECESSED ELECTRONIC BASIN TAP

### Design

With its 252mm spout, the new BINOPTIC wall-mounted electronic tap offers greater flexibility for your public washroom installations.

### Proven water savings

Water flows and shuts off automatically, thanks to the infrared presence detection at the end of the spout. The flow rate is preset at 3 litres per minute.

### Designed specifically for public places

A solution combining performance and style, to suit all kinds of public and commercial places.

### Easy to install and maintain

Independent IP65 electronic control unit. LED diagnostic aids simplify maintenance interventions.



Water savings

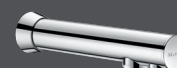


Touch-free



Design

Also in the  
BINOPTIC range



200mm and 135mm models  
**Refs. 379ENC, 379D13**





BIOFIL chrome-plated shower head filter **31261C** - Recessed mechanical shower mixer **2541** - SILVER flexible shower hose **836T1**  
Wall-mounted shower head support **845**





## NEW

CHROME-PLATED  
ANTI-LEGIONELLA  
SHOWER HEAD: WHEN  
STYLE & SAFETY ALIGN

Featured product: Ref. 31261C

## BIOFIL CHROME-PLATED SHOWER HEAD FILTER WITH INTERCHANGEABLE FILTER

### Optimal protection against legionella

Shower head with integrated all-germ filter, 0.2µm filtration threshold.

### 2-in-1 shower head

Eco shower head with interchangeable filtration cartridge.  
Can also be used without the filtration cartridge.

### Non-stigmatising design

Chrome-plated shower head with integrated filter, with a modern and discreet design that is ideal for showers in public places.

### User comfort

Single spray shower head with a large diffuser.

### Optimised lifespan

Shower head available with 2 or 4-month filtration cartridge.



## DELABIE Innovation

Thanks to the replaceable filtration cartridge, only the internal cartridge needs to be changed, reducing plastic waste while guaranteeing effective protection against legionella.  
This chrome-plated shower head provides a practical and durable solution for responsible every day use.



Anti-legionella  
and all-germ



2 or 4-month  
lifespan



Single spray  
shower head with  
large diffuser



Fits any  
shower hose



With or without  
filtration cartridge



Chrome-plated, hygienic siphonic waste **621** • Mechanical basin mixer **2921T**





## NEW

PRESENTING THE PERFECT  
 HYGIENE SOLUTION,  
 THE WASTE WITH NO SIPHON.  
 ENSURING CLEANLINESS  
 FROM DAY ONE OF  
 INSTALLATION

Featured product: **Ref. 621**

## HYGIENIC WASTE WITHOUT WATER LEVEL

### Maximum hygiene

The hygienic waste with a membrane but with no water level prevents bad smells and the accumulation of water.

The waste connects directly to the pipework, avoiding any stagnation.

### Simple to maintain

The dome and membrane can be cleaned and easily replaced. They are also easy to access and remove, saving precious time when it comes to maintenance.

### Easy to service

Smooth interior with no corners where hair and other residue can cling.

### Design

Modern design that adapts to any washbasin without an overflow.

### Easy to install

The waste with a membrane connects directly to the pipework, avoiding the bulk of a classic waste.



No water level



Connected directly  
 to the pipework



Easy to remove  
 and replace



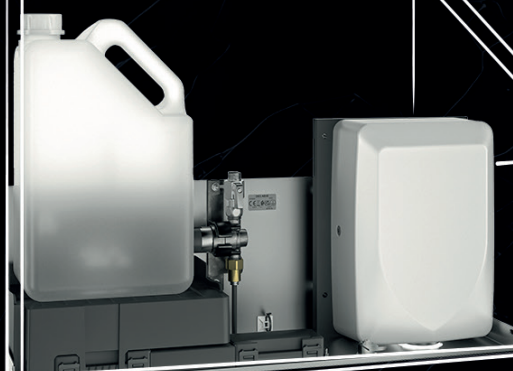
Smooth interior  
 with no nooks or  
 crannies



## DELABIE Innovation

The design of DELABIE's water-free hygienic waste eliminates the disadvantages of classic wastes and prevents bad smells or blocked pipes, ensuring impeccable hygiene. It's simplified maintenance and its durability make it a practical and effective solution.





3-in-1 Internal unit with hand dryer **5102031**



**NEW**  
 MIRROR, MIRROR,  
 ON THE WALL  
 WHAT'S BEHIND YOUR  
 SECRET DOOR?

Featured product: **Ref. 510203I**

## 3-IN-1 INTERNAL UNIT

### ELECTRONIC SOAP DISPENSER, TAP AND HAND DRYER

#### Design

Compact and designed for quick installation in your own cabinet, behind your mirror, the units adapt to any space, especially yours.

#### Hygiene

Impeccable hygiene is guaranteed thanks to sensor activation; the 3-in-1 unit is entirely touch-free.

#### Quick and easy to install

The 3-in-1 internal unit is a tailor-made solution for bespoke cabinets on every project. A single electrical connection is required, and all 3 functions are immediately operational.

*Various models are available: with paper towel dispenser, as a 2-in-1 unit with soap dispenser and hand dryer, or as a single unit model with soap dispenser only.*

Also in the mirror cabinet range



Mirror cabinet with 4 functions  
**Ref. 510203**



Design



Touch-free



Hygiene



Quick to install





HIGHFLOW Compact hand dryer **510625P** - Unbreakable stainless steel mirror **3459** - BINOPTIC electronic tap **378015**  
BINOPTIC electronic soap dispenser **512121P**





## NEW

ULTRA FAST,  
ULTRA COMPACT:  
ULTRA DELABIE

Featured product: **Ref. 510625P**

## HIGHFLOW COMPACT HAND DRYER

AIR PULSE HAND DRYER  
BRIGHT POLISHED FINISH

### Discretion

Compact, sleek lines:  
blends seamlessly into  
any washroom area design.

### Comfort

Electric hand dryer with infrared  
detection and high-speed drying  
in 10 to 12 seconds.  
Smart technology automatically  
shuts off the dryer when hands  
are removed.

### Design

The design is modern and  
universal, perfect for giving your  
washrooms some style.

### Easy to clean

With its one-piece, bacteriostatic  
304 stainless steel cover,  
bacterial development is limited  
and cleaning is simple.

*Satin polished model is also  
available.*

Also in the  
hand dryer range



HIGHFLOW  
air pulse hand dryer  
**Ref. 510622**



Automatic  
hand dryer



Bacteriostatic  
304 stainless  
steel



Compact



High-speed  
drying





Deck-mounted liquid soap dispenser **729064** - TEMPOMIX 3 deck-mounted time flow basin mixer **794000** - HEMI inset round washbasin **120490**  
Unbreakable stainless steel mirror **3459** - Paper towel dispenser **510601S** - Wall-mounted rectangular stainless steel bin **510461S**





Featured product: **Ref. 729064**

## LIQUID SOAP DISPENSER DECK-MOUNTED WITH 1L TANK

### Design

New design with clean, sleek lines: sanitary ware that stands the test of time.

### Withstands intensive use

Body and pump mechanism in 304 stainless steel (unbreakable), discreet, lockable, vandal resistant mechanism with automatic relocking.

### Universal

Compatible with hydroalcoholic gel.

### Easy to maintain

Fill from the top (by unscrewing the mechanism) or from underneath by unclipping the tank.

*Wall-mounted models are available with 0.5L tank, or without tank with 1.20m flexible tube for remote tank.*

### Also in the soap dispenser range



Wall-mounted model for service ducts

**Ref. 729170**



Design



Vandal-resistant:  
lockable  
mechanism



Withstands  
intensive use



Liquid soap or  
hydroalcoholic  
gel





SD Drinking fountain with bubbler and swan neck tap **180820**





**NEW**  
REDUCE  
PLASTIC BOTTLE  
WASTE

Featured product: Ref. 180810

## DRINKING FOUNTAINS

### A COMPLETE RANGE FOR PUBLIC PLACES

#### Essential for Public Places

To reduce the over-consumption of plastic water bottles.

#### Vandal-resistant

Unbreakable materials.

#### Optimal hygiene

Bacteriostatic 304 stainless steel, smooth surface, easy to clean.

#### Easy to maintain

Perforated flat-grid waste with no screws, tap with automatic shut-off and adjustable flow rate.

#### Complete range

Multiple models are available to suit all your installation needs: wall-mounted or floor-standing, with or without bubbler tap, and with swan-necked tap to allow water bottles to be filled efficiently.

Also in the drinking  
fountains range



SD drinking fountain  
with bubbler tap

**Ref. 180800**

*Floor standing models are available  
(refs. 180100, 180110)*



Recyclable  
material



Lightweight



Withstands  
intensive use



Easy to  
clean

## AVAILABLE DOCUMENTS:

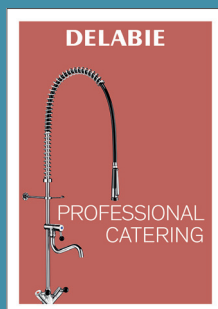
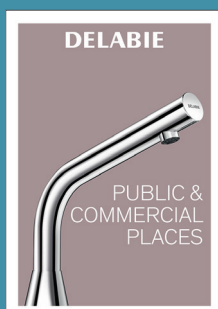
**DOC 609INT:** Water Controls for Public and Commercial Places

**DOC 900INT:** Water Controls for Healthcare Facilities and Retirement Homes

**DOC 950INT:** Accessibility and Independence - Hygiene Accessories for Public and Commercial Places

**DOC 750INT:** Stainless Steel Sanitary Ware

**DOC 200INT:** Water Controls for Professional Catering



# DELABIE

18 rue du Maréchal Foch  
80130 FRIVILLE - FRANCE

DELABIE SAS share capital 999.600 € - RCS Amiens B 615 680 089



DOC100INT - 11/2024

[delabie.com](https://delabie.com)

