



HIGH QUALITY
HVAC PRODUCTS

Dzień dobry!
We come from Poland.

niczuk.eu

Who we are.

THALE sp. z o.o. sp.k. is a Polish manufacturer of pipe and HVAC fastening systems for the construction industry, support structures for heavy industry, structures for the construction of photovoltaic farms, and installations for the grain milling. The company operates successfully in the EU and global markets, where it sells products under the well-known **Niczuk brand**.

Our main values:

- People
- Development
- Environment
- Innovation
- Quality
- Safety



The company's history.



1957

The beginnings

In June 1957, Anna and Roman Niczuk opened a small workshop called Zakład Ślusarski Roman Niczuk on Grunwaldzka Street in Olsztyn.



1978–1988

Growth & international cooperation

During the years of economic transformation in Poland, new opportunities for development emerged. A cooperation with a leading German company was established, and a new series of products—pipe clamps—was introduced.



2000

Increase in sales

Systematic sales growth in Poland resulted in the dynamic development of the Niczuk brand in foreign markets. In 2000, export sales in the installation industry began.



2005

Three generations & steadily forward

In 2005, a representative of the third generation of the family, Jakub Niczuk, joined the company. He mainly dealt with development and investments in the fastening department, where he introduced new, innovative products.



2019

The time of modernization

The company has undergone an advanced sales network modernization process focused on providing Customers with the highest level of service and advice. At the end of 2019, Niczuk underwent a company transformation.



2023

New products & international expansion

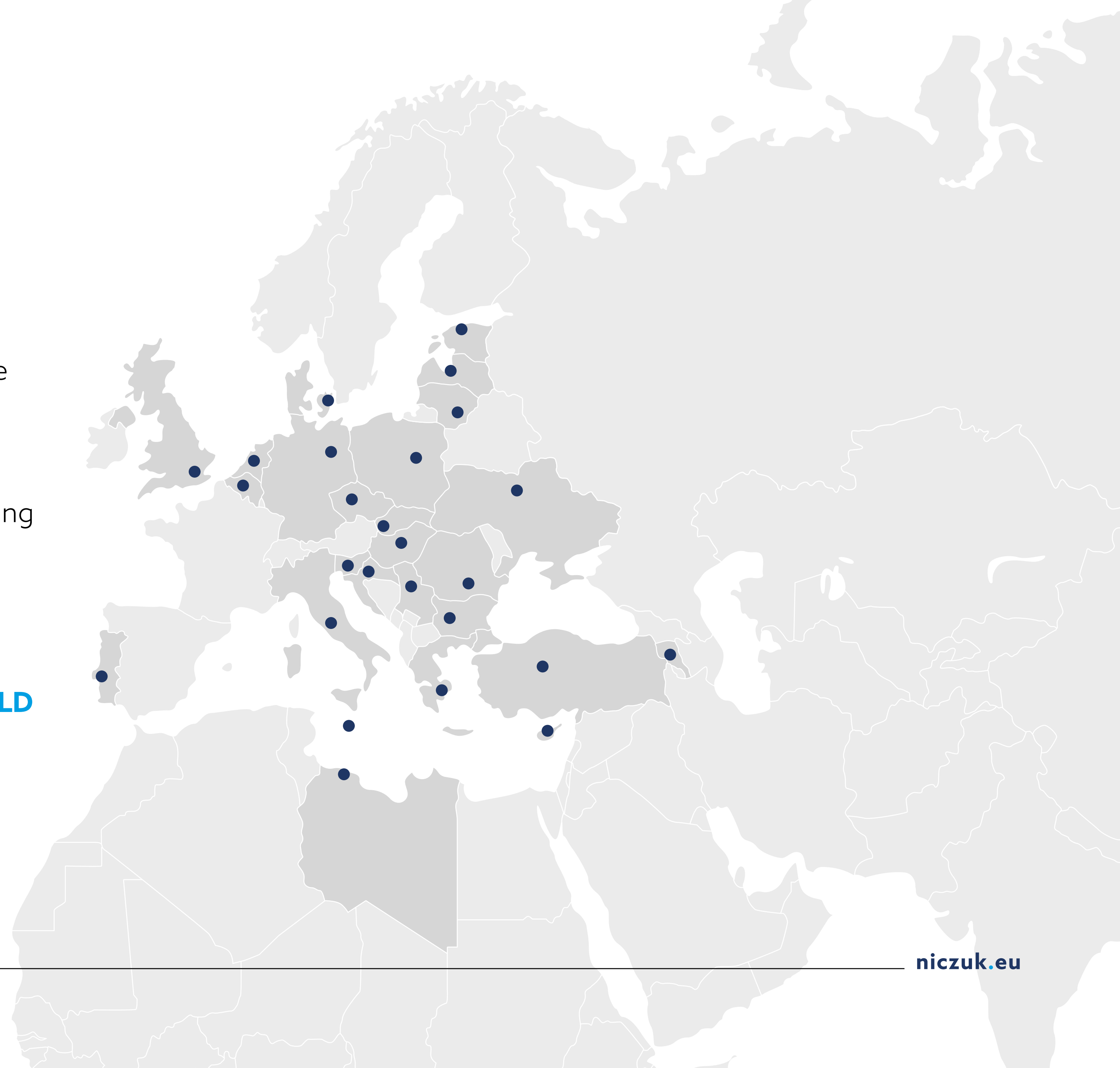
Today, THALE is a modern company with a rapidly expanding sales network, new product lines, and extensive infrastructure in Poland and abroad.



The Niczuk brand in global markets.

Export sales of products under the Niczuk brand name began in 2000, first to the neighboring countries—Germany, Lithuania, and Ukraine. Today, high-quality Niczuk-branded products find buyers in such demanding markets as Italy, Denmark, Greece, Turkey, and many others.

**TODAY, NICZUK BRAND PRODUCTS ARE BEING SOLD
IN NEARLY 30 COUNTRIES AROUND THE WORLD.**

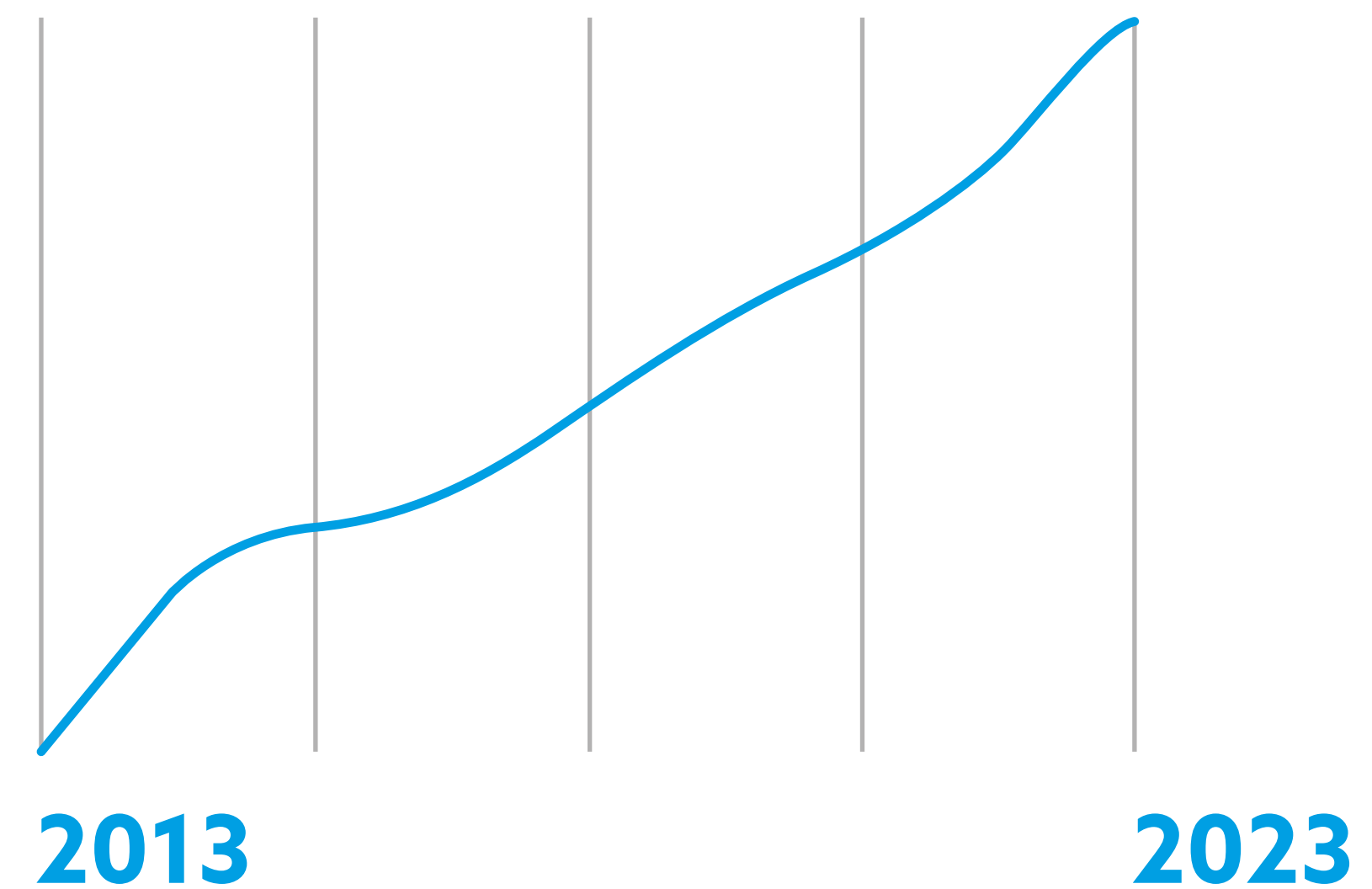




Dynamic growth.

Over the past 10 years, the Niczuk brand has built a strong position in the market.

SALES INCREASE OF OVER 400%.



Design assistance.

We build the competitive advantage of the brand based on partner relations. We willingly share the knowledge and experience of our design team providing support at every stage of the investment. We propose economically optimized solutions and at the same time certainty in terms of durability of the installation.

We pay attention to:

- Safety of use
- Facility functionality
- User requirements
- Possible expansion





Poland's largest Design Department.

We offer elaborate projects presenting the proper use of Niczuk products, taking into consideration the specificity of the object. The cooperation at the design stage is based on proven solutions and vast experience. Branches of our Design Department are located in Bydgoszcz, Olsztyn, and Krakow, as well as in Hungary and Romania.

12

years of the
existence of the
Design Department

46

qualified designers

7,850

developed projects
in 2023



Original calculation software.

GoBeam

Used to select the proper cross section of the channel. Determines the stress values and deflection arrows in the channel, depending on how the element is supported and the values of the applied loads.

GoFrame

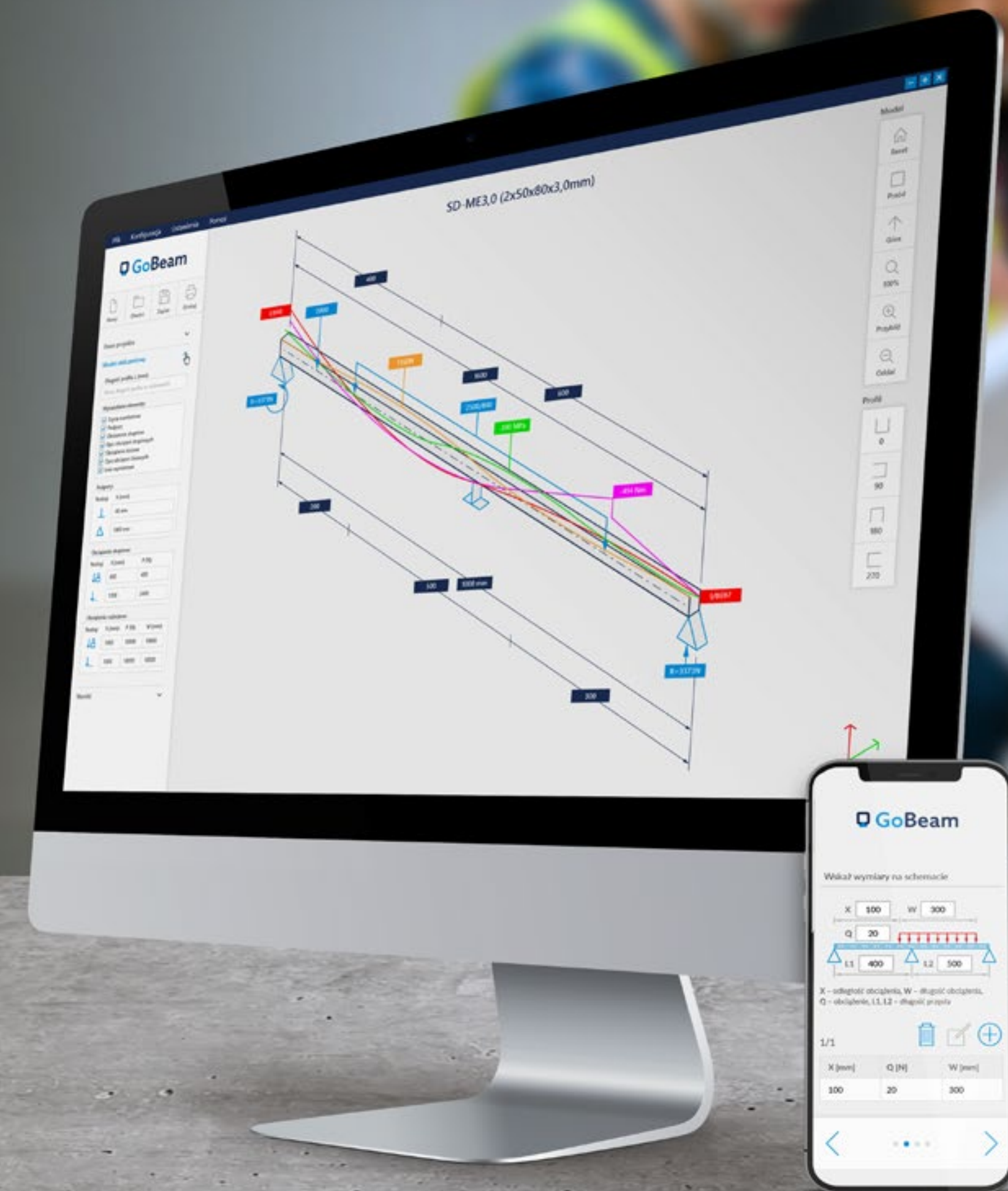
Determines stresses, displacements and reactions of supports in frame systems made of Niczuk channels and tendons made of threaded rods.

GoSterm

Determines fixed point forces and extensions of thermal stresses in the pipeline.

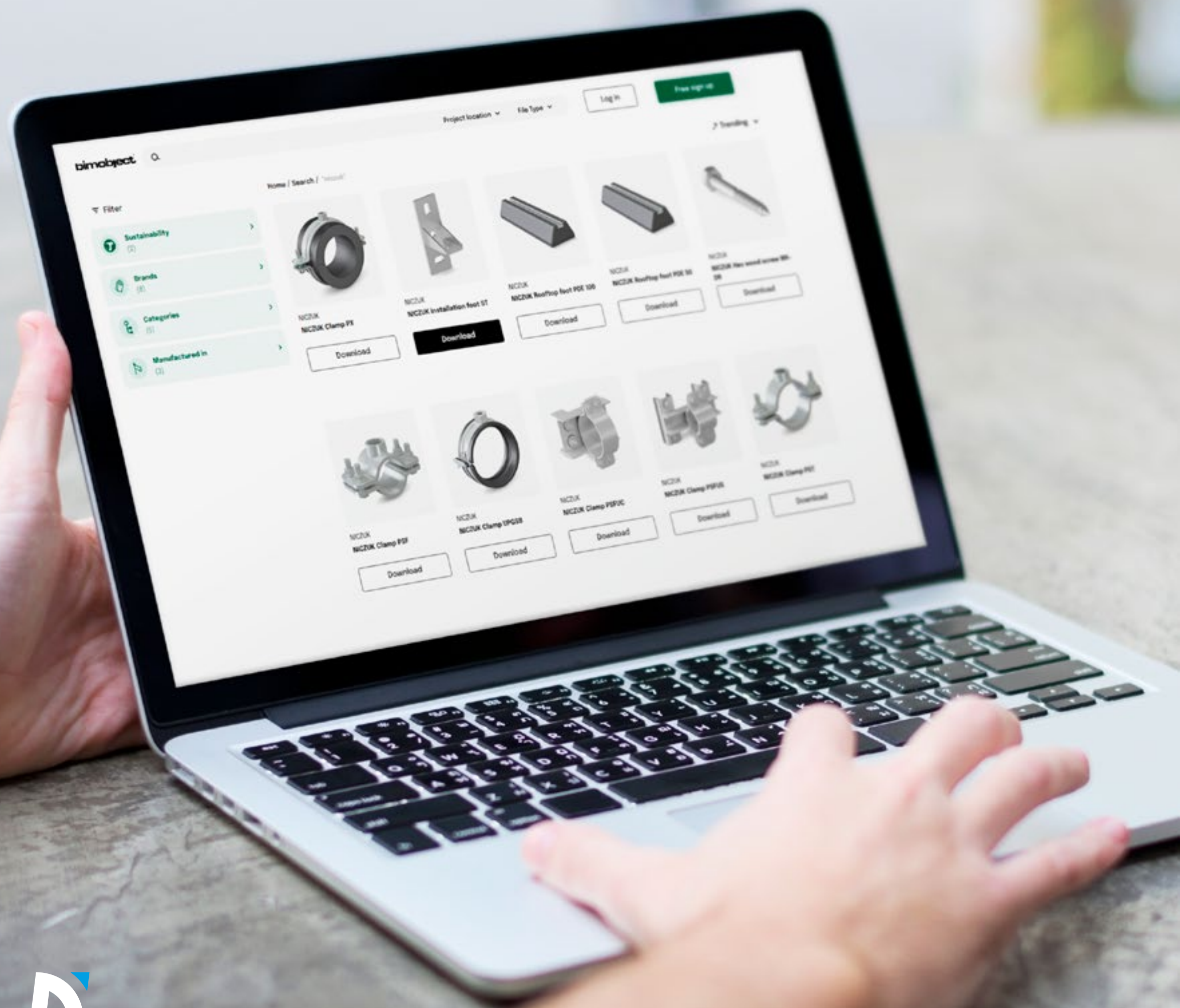


DOWNLOAD
NICZUK
CALCULATION
SOFTWARE





CHECK NICZUK
PRODUCT LIBRARY
AT BIMOBJECT



Niczuk product library at **bimobject**®

A graphically illustrated collection of support assemblies for use by design offices for various types of structures and requirements construction and requirements of the building and types of installation.

Each of the diagrams shown can be downloaded from the library as a PDF or DWG file. All drawings are made to scale, allowing you to check the dimensions of the product in question. For design professionals, we also provide a library of diagrams in Autodesk Revit.





Research and development.

In the Niczuk laboratory independent tests on new products are carried out, thanks to which we deliver strength-tested and safe products to our Customers even faster.

Scope of research conducted:

- static tensile test at room temperature with determination of the values required by EN ISO 6892-1;
- static compression and bending test;
- determination of Young's modulus E ;
- determination of the plastic anisotropy factor r for thin sheets and strip;
- determination of the strain hardening exponent n ;
- technological tests of bending, breaking, flattening, splitting;
- testing of mechanical properties of bars, pipes, plates, sections;
- Rockwell and Shore hardness tests of materials.

Innovations.

UltraCover XP is an innovative group of advanced lamellar, zinc-nickel, and thick film passivation coatings on the market.

Advantages of UltraCover XP:

- excellent corrosion resistance at optimal thickness;
- high temperature and chemical resistance;
- no hydrogen embrittlement in the material;
- possibility to cover complex shapes and holes;
- its production is energy-saving and environmentally friendly;
- does not contain chromates and is safe for the environment;
- withstands over 1000h in a salt chamber according to PN-EN ISO 9227-2012;
- complementary with other security systems;
- used inside and outside.



**21-YEAR
WARRANTY**



**Ultra
Cover XP**





The highest quality of products.

In order to meet the market needs, we are constantly improving our products.

Our priorities are:

- quality of materials,
- compatibility of the product range,
- production standards,
- ergonomics of work,
- product aesthetics.



High-resistance clamps.

800

The number of highly resistant to temperature and weather conditions clamps in our product portfolio. The clamps are dedicated to all piping and industrial installations.



Anti-corrosion coatings:



GALVANIC
ZINC



ULTRA
COVER XP



HOT-DIP
GALVANIZED



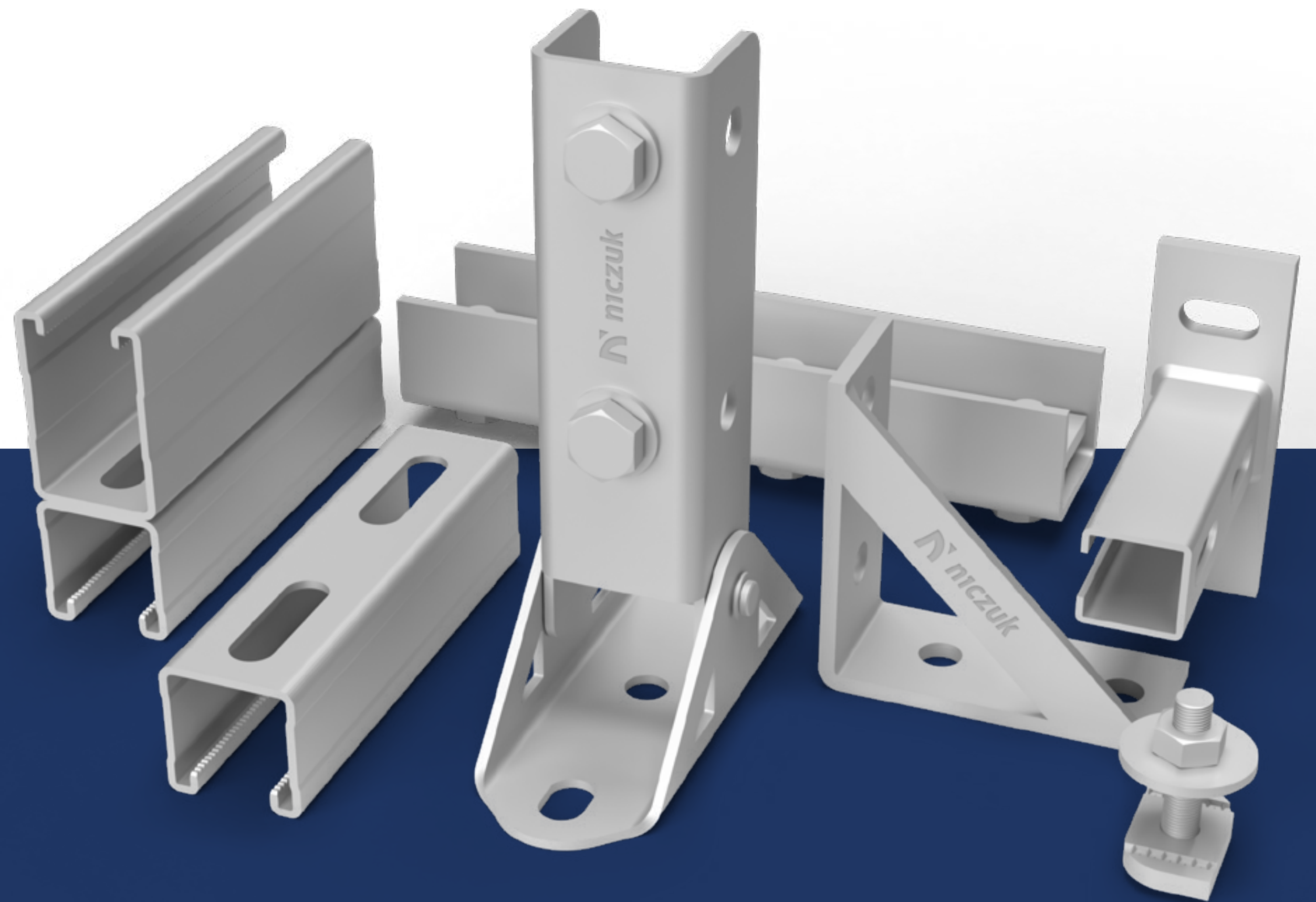
EDELSTAHL®
INOX
STAINLESS STEEL



Channel system.

47

The number of channel types (up to 6 meters long, with a full range of mounting accessories) in our product portfolio.



Anti-corrosion coatings:



GALVANIC
ZINC



ULTRA
COVER XP



HOT-DIP
GALVANIZED

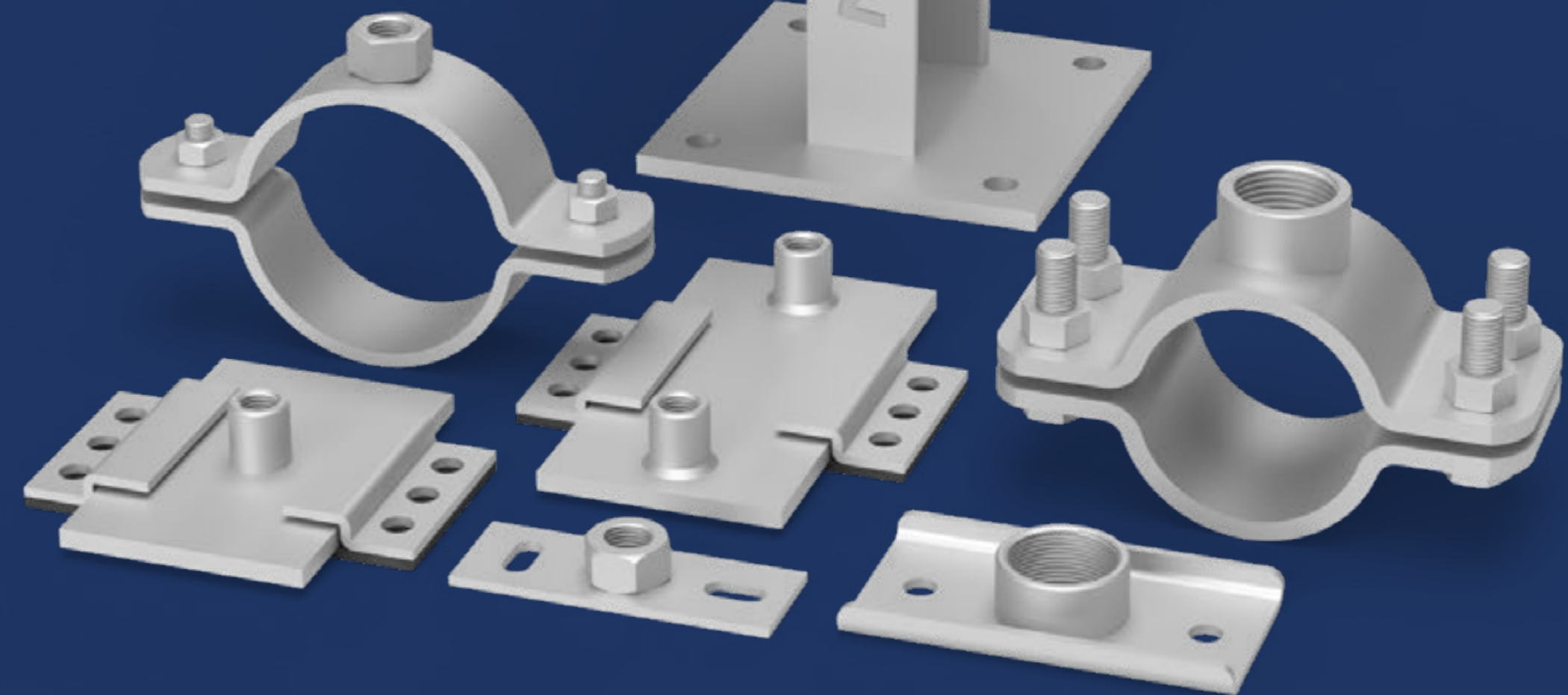


EDELSTAHL®
INOX
STAINLESS STEEL



Fixed points and sliding supports.

We produce components for assembly of installations exposed to thermal elongations. The products of this group enable the correct operation of the installation and its long-term operation.

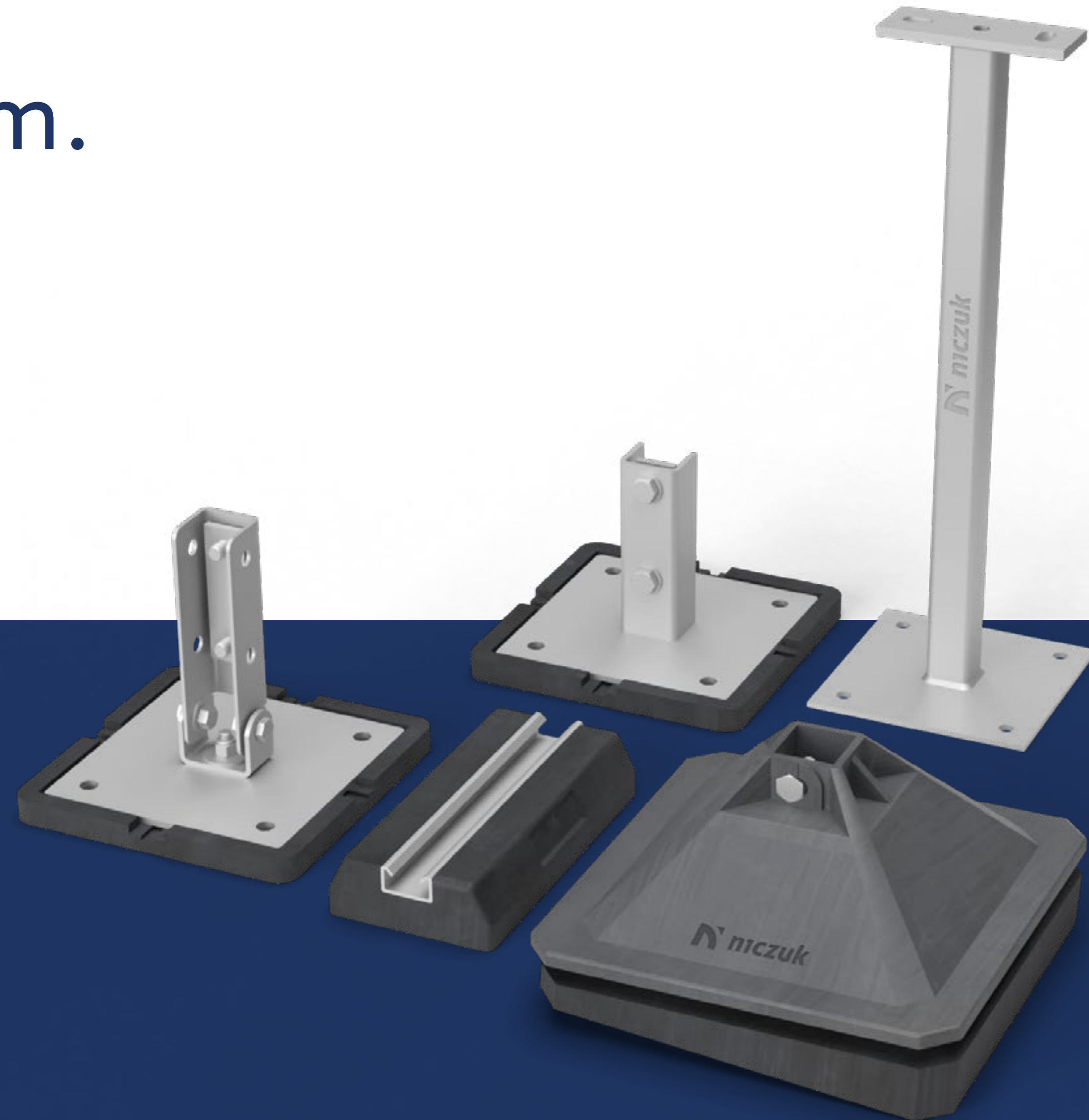


Anti-corrosion coatings:



Roof support system.

Our portfolio includes free-standing supports as well as steel and plastic supports mounted under the insulation layer for the assembly of all installations and devices.



Anti-corrosion
coatings:



Wire rope suspension system.

We offer a comprehensive wire sling system that enables quick and simple suspension of ventilation ducts, heating, ceilings, and air conditioners.



Anti-corrosion coatings:



Sprinkler installation and passive fire protection systems.

We offer comprehensive solutions for mounting fixed water extinguishing devices as well as for sprinkler and hydrant installations with FM and VdS certificates.

Anti-corrosion coatings:



GALVANIC
ZINC



ULTRA
COVER XP

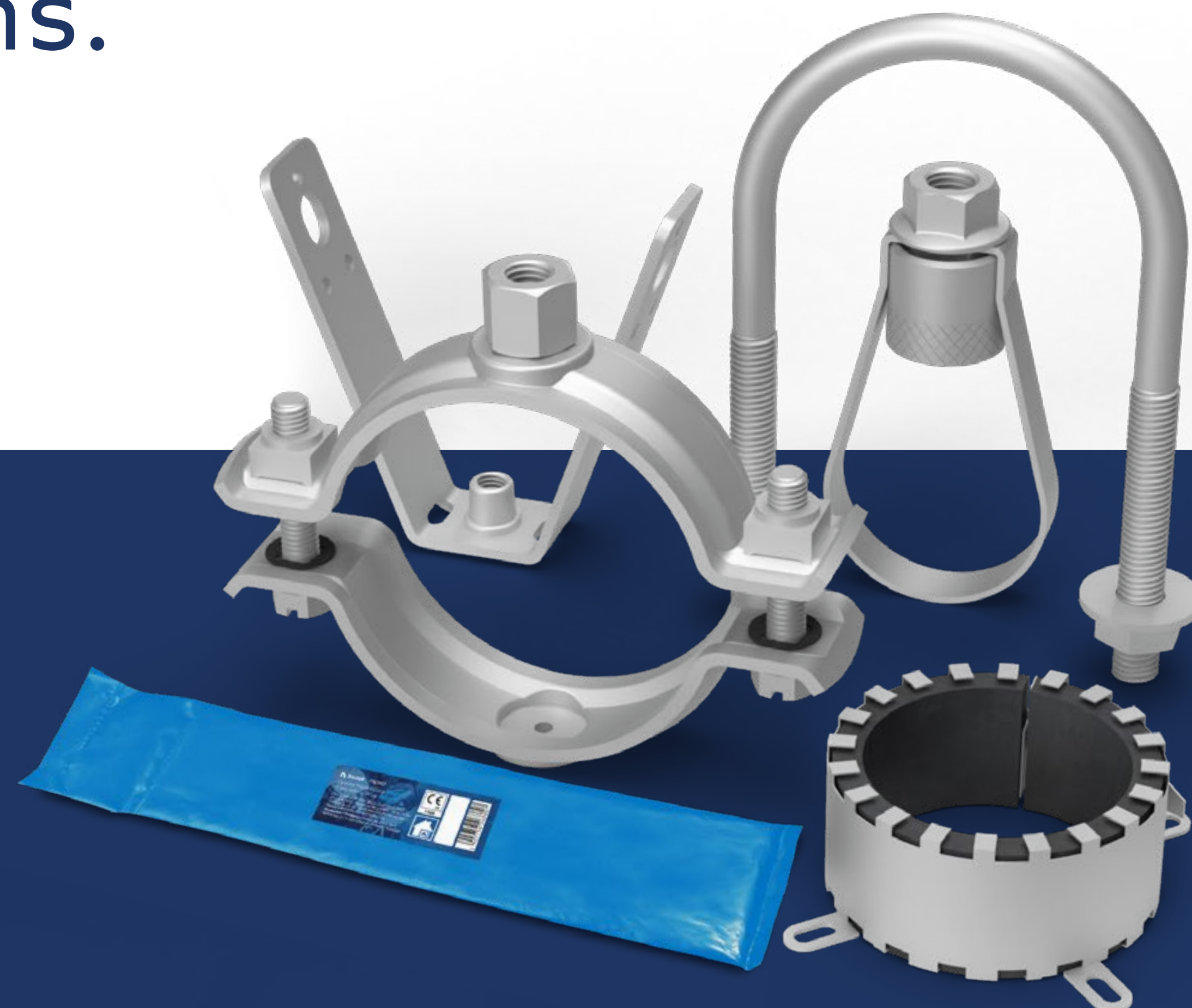


HOT-DIP
GALVANIZED

Certificates:



APPROVED



Service platforms.

Niczuk brand service platforms are designed to provide the highest level of convenience with their non-welded, lightweight, and easily bolted modular design. The simplicity of assembly and disassembly is applicable wherever time is of the essence.

Advantages of the Niczuk brand service platforms

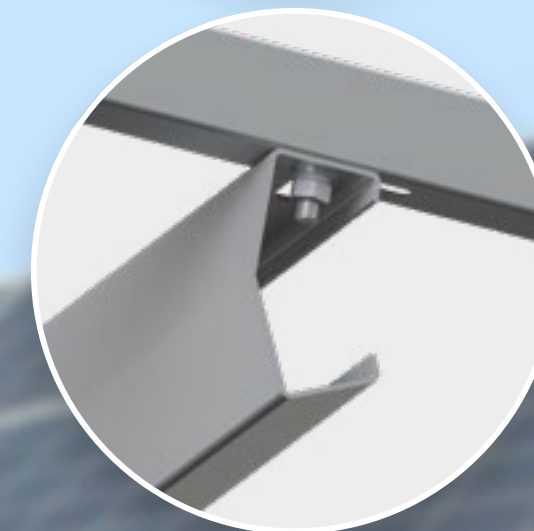
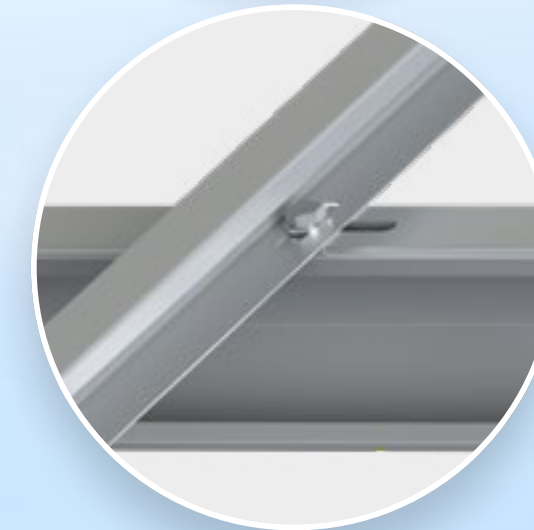
- Modular, easily bolted structures with versatile applications.
- Ideal alternative to welded structures.
- Quick assembly without interference with the roof structure.
- Outstanding durability and resistance to external conditions due to three options of corrosion protection.
- Niczuk brand design solutions.
- Customizable solutions for individual customer requirements.
- Clear and legible assembly drawings.
- Pre-assembly service.
- Technical support during implementation.



rackta – channels and accessories for the construction of photovoltaic systems.

Rackta is a comprehensive range of products guaranteeing the construction of stable and easy-to-install structures designed for both large-scale solar farms and micro photovoltaic installations. The components of the structure have been designed to meet four basic principles that guarantee an advantage over the European competitors.

- More stable construction
- Reduced structural complexity
- Ease of installation
- Easy service inspections





Pre-assembly service.

Pre-assembly of the elements according to our original designs means:

- reduction of installation time on the investment,
- guarantee of the correctness of the products used,
- actual material costs 100% in line with calculations,
- pre-assembled kits marked for easy implementation,
- delivery on site at the agreed time.

Technical assessments and certificates.



VdS certificate guarantees the highest standards in the field of security systems and fire protection.



FM Approvals certificate is a leader in testing and certification of fire protection products.



National technical assessment of the Building Research Institute (ITB).



The Certificate of Conformity with EN ISO 9001-2000 covers the design, production, and sale of fastening systems.

Awards and prizes.



We care.



We support athletes.



We care about the local community.



We care of animals.



We support the GOCC.



We care of our employees.



We comply with the Code of Ethics.



We are eco-friendly.

- **Waste management.** We minimize waste generation “at the source” and recycle 97% of the waste we produce.
- **Secondary raw materials.** Scrap metal, waste paper, plastic waste, and used oils are the company’s main secondary raw materials.
- **Green supplier.** In cooperation with our partners, it is crucial for us that their approach aligns with ecological standards.
- **Modern cardboard technologies.** We replaced plastic packaging with eco-friendly ones, primarily with cardboard packaging made from recycled materials.
- **Selection of clean materials.** The use of unbleached ecological paper became the standard in our company.
- **Economical printing.** We significantly reduce paper consumption by implementing an electronic document workflow system.





Cooperation with universities.

For many years, we have been cooperating with universities, sharing our knowledge and experience with students and consulting on innovations with academics.

- Łódź University of Technology
- Warsaw University of Technology
- Opole University of Technology
- Silesian University of Technology
- Bydgoszcz University of Science and Technology
- Poznań University of Technology
- Gdańsk University of Technology
- Wrocław University of Science and Technology
- Warsaw University of Life Sciences



The Niczuk brand realizations.

7,850

The number of projects carried out by us in 2023
(suspensions and supports of sanitary, ventilation,
and sprinkler systems).



niczuk.eu



Hungexpo

Country: Hungary

Hungexpo Ltd. is the leading exhibition and conference management company in Hungary. Renovation of the Congress and Exhibition Centre allows offers to exhibitors, conference organisers and visitors the highest European quality.



Unilever

Country: Romania

Unilever Group, one of the largest global players in the fast moving consumer goods market, is expanding its food factory in central Romania. The investment reflects the company's desire to continue its growth, adapt its technology to global trends in food industry, diversify its product range and expand its market.





Green Hall 3

Country: Lithuania

Green Hall 3 business centre is a place that integrates sustainability and modern technology. An excellent geothermal heating system was used, which covers 100% of the building's thermal energy needs. As a result, this green building stands for productivity that minimises the impact of CO₂ on the environment and shows the future of green solutions.



Cédrusliget Lakópark

Country: Hungary

Modern, eco-friendly, 3–6 storey residential buildings on a 48,000 m² building plot—that's almost 600 flats plus offices and commercial premises. The development is characterised by thoughtful, environmentally friendly infrastructure, elegance and modernity. Cedar Island (Cédrusliget Lakópark) gives a whole new meaning to the concept of condominium and home, where you don't have to compromise on the comfort of living and proximity to the Downtown, your own garden and parking spaces. Its services and infrastructure create a unique environment for residents.





Philip Morris

Country: Romania

Philip Morris International (PMI) is globally committed to creating a smoke-free future and replacing cigarettes with better alternatives. Romania is at the centre of this strategy through its factory in Otopeni. The Romanian unit is one of the world's most important facilities for the production of consumables for smokeless cigarettes.



ISHO

Country: Romania

ISHO is a holistic urban concept in the heart of Timisoara. It is an elegant and modern mix of residential facilities with offices, a world-class hotel, first-class services, and a wide range of cultural and sports facilities. This new alternative to the old urban lifestyle blends harmony, progressive thinking and concern for the environment.





Shopping center „Etele Plaza”

Country: Hungary

Hungary's first intelligent shopping centre offers visitors unique digital solutions on the Hungarian market. The investment also stands out for its advanced solutions in the areas of ecology, safety and sustainability (a green area of almost 4,000 m² in a total area of approx. 55,000 m²). Etele Plaza is a shopping centre of the newest generation.



Museum of Modern Art

Country: Poland

The building of the Museum of Modern Art is an essential investment for Warsaw, which aims to activate this part of the city centre and is the beginning of the redevelopment of the entire surroundings of the Palace of Culture. The four-storey building will have a total area of approx. 20,000 m². In addition to exhibition spaces, it will house a cinema, an auditorium, educational rooms, conservatory studios and a café.





The Western Railway Station

Country: Poland

The Western Railway Station in Warsaw will be the largest transfer hub in Poland. Warsaw West Station is a strategic station in terms of passenger traffic in Poland, used by around 60,000 people every day, and this number is set to increase steadily to reach 120,000 by 2030, according to the latest forecasts.



Pyrzowice Airport

Country: Poland

The aim of the investment is to improve Katowice Airport's operations by providing a new functional layout for Terminal B, which will fundamentally improve the efficiency and quality of passenger service and bring the security control system up to the planned higher standards. The investment will increase the area (by 40%) and volume (by 35%) of the building.





Mennica Legacy Tower

Country: Poland

Mennica Legacy Tower is one of the largest and most anticipated skyscrapers in Warsaw. The complex is to consist of a 130-metre-high tower and a neighbouring 36-metre-high building. Nearly 65,000 m² of modern office space will be available to the tenants. The investment will be completed on the place of the old headquarters of Mennica Polska.



Zalando

Country: Poland

The distribution centre for the Zalando Lounge concept is a fully commercialised built-to-suit development comprising 120,000 m² of warehouse space. It is the first international logistics centre, in the long term provides more than 1,000 new jobs for local residents.





Wave Office Centre

Country: Poland

The intention of the investment is to create a modern and functional centre for comfortable office work. Office Centre Wave has received the prestigious international LEED Core&Shell certificate on the Platinum level. This proves that building was designed and built in accordance with the highest standards.



Centaurus

Country: Poland

The Centaurus residential complex in Olsztyn is also known as Spectacular. The usable area of this eighteen-floor housing estate reaches 52,000 m² and combines residential, retail, service and office spaces.





Suntago Park of Poland

Country: Poland

Suntago, the largest investment of its kind in Europe and the most expensive private one in Poland, is a water park based on the thermal waters discovered near Mszczonów. The water park can daily accommodate 10,000 people. Among others, for the construction of the object there was used more than 500,000 tons of steel. The implementation of the investment has provided about 600 jobs and continues to be a great opportunity for the development of the region.



Nato Base

Country: Poland

The NATO investment in Powidz is an equipment depot for the American armoured brigade. The base is to include, among others: 5 warehouses for vehicles with a total area of 60,000 m²; an ammunition depot with an area of 5,400 m²; repair workshops with an area of 8,600 m², 2 garages with a total area of 1,650 m², an administration facility; an operational warehouse with an area of 5,570 m²; a Vehicle Assembly Point Pavement with an area of 22,550 m²; information and security systems, a technical warehouse.





Warsaw Breweries

Country: Poland

Browary Warszawskie is a complex with flats, offices, retail and entertainment space. It is a beautifully revitalised part of Warsaw in the heart of Wola district. The site where the famous Habermusch and Schiele breweries were built more than 170 years ago has been brought to life. Between the buildings, the developer has created an attractive public space, harmoniously combining the new and the historic part of the investment.



We deliver for the largest.



Zalando
Olsztynek-Ameryka



LIDL
Chain of stores



Philips Lightning Poland SA
Piła



Alcan
Złotów



Nestle
Wrocław



Kaufland
Chain of stores



Procter & Gamble
Warszawa



Glassworks
Jarosław



LG Chem
Wrocław



Auchan
Białystok



Polskie P.S.E. SA
Konstancin



Pfleiderer SA
Grajewo



Hotel Hampton by Hilton
Łódź



Michelin
Olsztyn



Power Plant
Jaworzno



Logistics Centre
Prologis Park



Mlekpól
Mrągowo



JYSK Logistics Centre
Radomsko



Waterpark Suntago
Wręcza



Power Plant
Pątnów II



TELEWIZJA POLSKA
TVP Telewizja Polska
Warsaw



Power Plant
Turów



WAVE
Office Building Gdańsk



Black Red White
Furniture Factories





HIGH QUALITY
HVAC PRODUCTS

Feel free **to contact us.**

THALE sp. z o.o. sp.k.

Wilimowo 2, 11-041 Olsztyn, Poland

tel. +48 538 238 866

export@niczuk.pl



niczuk.eu