

Press release

Waldachtal, 17 March 2025



fischer installation systems

Always providing the right solutions for technical building equipment

The fixing expert fischer provides its customers with guaranteed safety, quality and efficiency in construction. More than 75 years of inexhaustible innovative power and technical fastening expertise are incorporated into the continuous expansion of the range of products and systems. Installation systems by fischer tailored to specific applications enable safe, cost-effective and simple fastening and routing of any technical building equipment conduits.

fischer fastening and installation solutions make it quicker and easier to install all kinds of supply lines, resulting in rapid, cost-effective and successful projects. A wide range of installation systems for lightweight to heavy loads covers all types of applications in residential, non-residential and industrial buildings. Galvanised variants are ideal for installations in buildings, while hot-dip galvanised or stainless steel systems are suitable for outdoor use or in highly corrosive atmospheres. Users can also combine the required modular components depending on the conditions of the building and the circumference of the conduit. The fully hot-dip galvanised fischer heavy-duty system FMS replaces the need for secondary steel constructions during heavy installations, reducing costs by up to 30 per cent. The modular fischer

fischerwerke GmbH & Co. KG
Corporate Communications

Klaus-Fischer-Straße 1
72178 Waldachtal

universal channel system FUS also helps install medium to heavy pipe systems using rapid push-through connections for the channels. Lightweight loads can be installed using the simple 'Clix' mechanism with the fischer light channel system FLS.

fischer installation grids can be created with FUS channels. These grids allow the media connections in factories, production facilities and similar buildings to be converted and reconfigured effectively and economically at any time and anywhere. The new FYJB bracing element provides added flexibility for bracing and suspending installation grids on steel structures.

Fire-proof pipe supports and conduit installations can be designed and carried out with products and systems by fischer. The European Technical Assessment (ETA) for the fischer FUS channels certifies the products' proof of usability under fire exposure according to stringent requirements. This ETA 21/0140 is based on the European Assessment Document (EAD) 280016-00-0602 for pipe support systems. Additional products and systems by fischer retain their load-bearing capacity long enough to give people time to leave the building safely in the event of a fire. Safety is ensured by fire protection test reports in accordance with the criteria of the German Guideline on Conduits (LAR) based on MLAR 2015 for installation in escape and rescue routes. The test reports further certify a fire resistance rating of R30 to R120 as per EN 1363-1/ F30 to F120 under DIN 4102-2. Fix points and sliding elements complete the range. Coordinated system solutions capable of absorbing the thermal expansion of pipes cover all types of loads, from lightweight to heavy pipe systems.

The fischer range comprises numerous pipe clamps, both with and without sound insulation inserts, as well as construction elements and accessories to fasten light, medium and heavy pipes made of various materials for all types of conduit systems. The range further includes sprinkler loop hangers, pipe clamps, beam clamps and fastening elements approved by Germany's Property Insurer Associations, such as FM and VdS, certifying their safe application in sprinkler systems. Plugs and anchors suitable for sprinkler systems feature CE marking based on the relevant ETA.

Last but not least, fischer's range of technical building equipment solutions comprises system solutions tailored to custom applications, such as the innovative fischer all-in-one systems for flat roof installations. Through targeted load distribution, the systems prevent stress to the roof sealing and insulation layer, thereby preventing damage to the surface. These clever solutions can be used to install secure and sealed air conditioning units, ventilation ducts, pipe systems, cable systems and other technical building equipment installations on flat roofs.

Suitable fixing solutions are part of fischer's all-in-one system for technical building equipment installations. These solutions include the intelligent fischer DuoLine plugs with an innovative combination of materials that either fold, expand or knot depending on the construction material, allowing hanger bolts to be installed in any anchor base. The fischer UltraCut FBS II concrete screw with a diameter of 6 mm is also widely used. Its approval for multiple anchorages of non-load-bearing systems makes it ideal for fastening pipe systems, cable runs and channel systems alongside other applications in technical building equipment.

Wide range of technical building equipment services

From planning and implementation to documentation and subsequent monitoring of buildings and facilities, fischer offers a 360-degree service. Digital offers by the fixing expert meanwhile comprise BIM (Building Information Modelling) services and digital scanning tools for existing buildings. Further offers include automated construction with the fischer BauBot construction robot and the Construction Monitoring sensor innovation for efficient structural monitoring. INSTALL-FIX, a tool within the fischer FiXperience design software, supports customers with structural calculations involving the fischer installation systems. In just a few steps, planners and users can obtain a verifiable printout and list of materials of the required components.

fischer provides its customers with further support services, including calculations, surveys, approval procedures, BIM modelling, CAD and fire protection services for optimised planning. The company's engineering services are consolidated in its fischer Construction Engineering GmbH. During the construction phase, the fixing specialist's support services range from planning installation, preassembly services and training all the way to on-site briefing and installation. Flexible, customisable fischer office and storage containers provide customers with optimised logistics to increase efficiency on the construction site. The company's engineers, application engineers and field staff guarantee individual and professional support. With 50 operational subsidiaries around the globe, the fixing expert is always within easy reach of its customers.

Image captions:

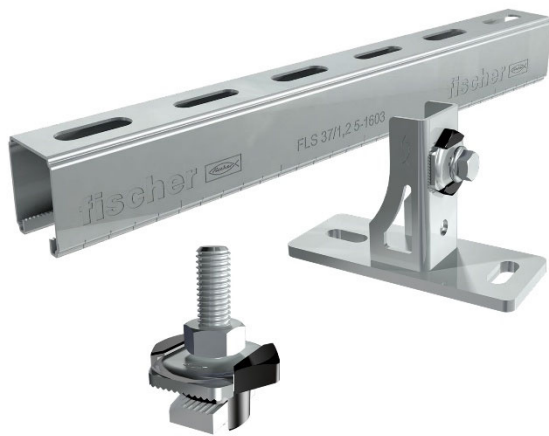


Image 1

Easier installation: The FLS system can be used for safe and cost-effective mounting of light loads such as pipes with a small diameter or ventilation and electrical suspensions. Pre-assembled construction and connecting elements make installation quick and easy, while its modular setup provides added flexibility.





Images 2 and 3

Universal installation system fastening: As a modular system with optimised “connectors” and the option of push-through installation, the FUS system allows media conduits to be fastened with a high degree of flexibility. It can easily be installed in the base element by being pushed in and rotated. Thanks to pre-assembled connecting and construction elements, custom systems are even quicker and easier to assemble.



Image 4

Heavy-duty installation without complications: Vertical and suspended frame constructions, supported constructions with variable connectors and any kind of heavy pipe or cable tray fastening - fischer's heavy-duty channel system (FMS) can save up to 30% of the cost of these installations and many more due to shorter construction and installation times compared to secondary steel constructions.



Image 5

Innovative installation grids: Flexible fischer load-bearing structures allow the media connections in factories, production facilities and similar buildings to be converted and reconfigured effectively and economically at any time and anywhere. They also extend the media supply in factories throughout the life cycle of the building by providing flexibility.

Images: fischer

fischer Group of Companies

The fischer Group of Companies, headquartered in Waldachtal in Germany's northern Black Forest, generated sales of 1.11 billion euros in 2024 with a worldwide staff of 4,700 employees. The family-owned company runs 50 operational companies worldwide and exports to about 120 countries. It includes the four divisions fischer fixing systems, fischertechnik, fischer Consulting and fischer Electronic Solutions.

fischer fixing systems is the technological market leader in key areas of fixing technology. fischer offers products that deliver technical perfection to a wide range of customers, from do-it-yourselfers to tradespeople to key account partners.

With its construction kits, fischertechnik is active in both the toymaking and the educational sector. fischertechnik is one of the last remaining toy makers to exclusively develop and produce in Germany.

fischer Consulting evolved from the competence developed in the company itself, which includes the fischer ProcessSystem with its central aim of permanent improvement for the ultimate benefit of the customer. fischer Consulting advises small and medium-sized businesses, government agencies and major companies on their path towards lean and efficient processes.

fischer Electronic Solutions develops and manufactures custom electronic solutions for the industrial and medical sectors, with a focus on long-term partnerships and tailor-made, high-quality solutions. As a partner in innovation, fischer Electronic Solutions is breaking new ground together with its customers to build a successful future.

www.fischer.group

Contact

Katharina Maria Siegel-Rieck

Press Relations Officer fischer fixing systems

Telephone: +49 7443 12 – 4217

Email: KatharinaMaria.Siegel-Rieck@fischer.de