

fischer 

Pipe clamps Compass.



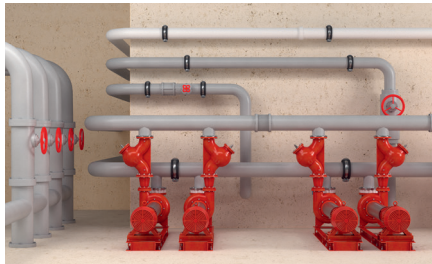
Application overview

Application - pipe clamps what for and how?

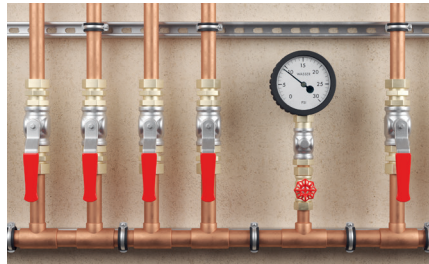
The service pipe systems, used by different trades, around buildings and industrial plants are all held in place with pipe clamps. The mostly used types of pipe materials are steel, stainless steel, copper, or plastic pipes all with different diameters.

Different types of pipe clamps are used for fixing various types and sizes of pipelines. They differ in the loads they take and, in different temperatures. All while abiding by different standards and certain regulations like fire protection or noise insulation.

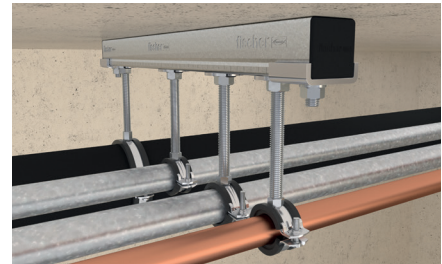
Overview of the most important types of pipelines:



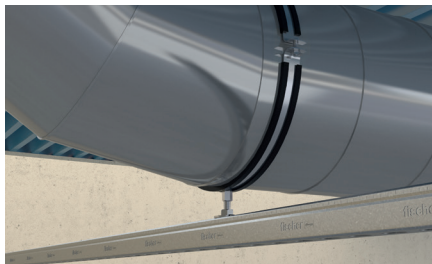
Energy and water supply



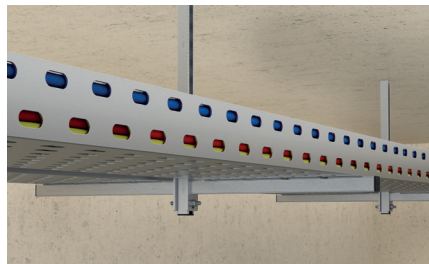
Gas pipeline and compressed air line



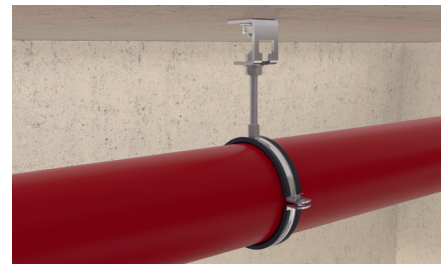
heating, cooling, drinking water and Sprinkler pipes



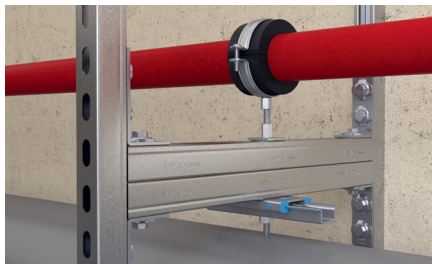
Ventilation ducts and pipes



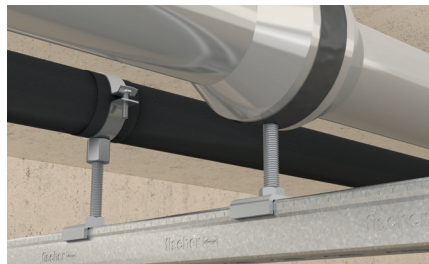
Electronic installations
(medium and low voltage)



Wastewater and rain water pipe



Refrigeration pipes



Air-conditioning pipes

Product overview

The fischer pipe clamps assortment.

Pipe clamp FGRS

The one-piece hinged pipe clamp with floating single screw



Maximum tensile load: 90 kg (0,9 kN)

0,4	0,6	0,8	1,0	1,5	1,8	2,5	3,0	4,0	5,0	6,0	8,0	11,0	13,0	15,0	17,0
light				medium weight						heavy-weight					

- Floating single screw allows a simple, one-handed installation
- Compact construction enables a simple post-installation insulation

Zinc plating:
zinc-plated steel, 5–9 µm

Economic secure fixing for pipes up to 2" with threaded rods or stud screws

Load range:
0,8–0,9 kN

Clamping range:
8 mm to 63 mm

Sound insulation insert:
EPDM; chlorine-free, silicone-free

Pipe clamp FGRS Universal M8

The hinged pipe clamp with the convenient and secure quick-release fastener

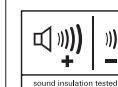


Maximum tensile load: 100 kg (1,0 kN)

0,4	0,6	0,8	1,0	1,5	1,8	2,5	3,0	4,0	5,0	6,0	8,0	11,0	13,0	15,0	17,0
light				medium weight						heavy-weight					

- M8 Connecting nut
- Rapid-locking mechanism with crimped edges allows an easy installation
- Safety lock for pipe adjustment without bursting the clamp

Zinc plating:
zinc-plated steel, 5–9 µm



Time-saving secure fixing for pipes up to 2" with threaded rods or stud screws

Load range:
0,7–1,0 kN

Clamping range:
12 mm to 66 mm, gapless!

Sound insulation insert:
EPDM; chlorine-free, silicone-free

Pipe clamp FGRS Universal M8/M10

The hinged pipe clamp with the convenient and secure quick-release fastener



Maximum tensile load: 130 kg (1,3 kN)

0,4	0,6	0,8	1,0	1,5	1,8	2,5	3,0	4,0	5,0	6,0	8,0	11,0	13,0	15,0	17,0
light				medium weight						heavy-weight					

- M8/M10 Connecting nut (Combi thread)
- Rapid-locking mechanism with crimped edges allows an easy installation
- Safety lock for pipe adjustment without bursting the clamp

Zinc plating:
zinc-plated steel, 5–9 µm



Time-saving secure fixing for pipes up to 4" with threaded rods or stud screws




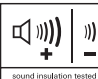

Load range:
0,7–1,3 kN

Clamping range:
12 mm to 115 mm




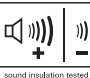
Sound insulation insert:
EPDM; chlorine-free, silicone-free


Product overview

The fischer pipe clamps assortment.

<h3>Pipe clamp FRS-L Universal</h3> <p>The two-screw pipe clamp with a rapid locking mechanism and combination connection nut</p> 	<p>Maximum tensile load: 239 kg (2,4 kN)</p> <table><tr><td></td><td></td><td></td><td></td><td></td><td></td><td></td><td></td><td></td><td></td><td></td><td></td><td></td><td></td><td></td><td></td></tr><tr><td>0,4</td><td>0,6</td><td>0,8</td><td>1,0</td><td>1,5</td><td>1,8</td><td>2,5</td><td>3,0</td><td>4,0</td><td>5,0</td><td>6,0</td><td>8,0</td><td>11,0</td><td>13,0</td><td>15,0</td><td>17,0</td></tr><tr><td colspan="6">light</td><td colspan="5">medium weight</td><td colspan="5">heavy-weight</td></tr></table>																	0,4	0,6	0,8	1,0	1,5	1,8	2,5	3,0	4,0	5,0	6,0	8,0	11,0	13,0	15,0	17,0	light						medium weight					heavy-weight					<div><p>Fire resistance classification R120 according DIN EN 1363-1</p></div> <div><p>German standard regulations for fire safety requirements for pipingsystems (11/2005) Minimum distance ≤ 50 mm</p></div>	<div><p>sound insulation tested</p></div> <div><p>RAL RÜTTIGHEIT ZERTIFIZIERT</p></div>
0,4	0,6	0,8	1,0	1,5	1,8	2,5	3,0	4,0	5,0	6,0	8,0	11,0	13,0	15,0	17,0																																				
light						medium weight					heavy-weight																																								
	<ul style="list-style-type: none">– Fire inspection report and sound insulation report guarantee independently tested function and safety– Rapid-locking mechanism with crimped edges allows an easy installation– Safety lock for pipe adjustment without bursting the clamp– Connecting nut with combination thread M8/M10 ensures fewer stock items	<p>Easy and slight secure fixing for pipes with threaded rods or stud screws</p>																																																	
	<p>Zinc plating: zinc-plated steel, 5–9 µm</p>	<p>Load range: 1,0–2,4 kN</p>	<p>Clamping range: 8 mm to 172 mm, gapless!</p>																																																
		<p>Sound insulation insert: EPDM; chlorine-free, silicone-free</p>																																																	

Note: The load specification of load types applies respectively to the largest size pipe clamps.

Pipe clamp FRS / FRS zl / FRS A2 / A4																																																	
	<p>The two-screw pipe clamp with combination connecting thread</p>																																																
	<p>Maximum tensile load: 250 kg (2,5 kN)</p> <table><tr><td></td><td></td><td></td><td></td><td></td><td></td><td></td><td></td><td></td><td></td><td></td><td></td><td></td><td></td><td></td><td></td></tr><tr><td>0,4</td><td>0,6</td><td>0,8</td><td>1,0</td><td>1,5</td><td>1,8</td><td>2,5</td><td>3,0</td><td>4,0</td><td>5,0</td><td>6,0</td><td>8,0</td><td>11,0</td><td>13,0</td><td>15,0</td><td>17,0</td></tr><tr><td colspan="3">light</td><td colspan="4">medium weight</td><td colspan="9">heavy-weight</td></tr></table>																	0,4	0,6	0,8	1,0	1,5	1,8	2,5	3,0	4,0	5,0	6,0	8,0	11,0	13,0	15,0	17,0	light			medium weight				heavy-weight								
	0,4	0,6	0,8	1,0	1,5	1,8	2,5	3,0	4,0	5,0	6,0	8,0	11,0	13,0	15,0	17,0																																	
	light			medium weight				heavy-weight																																									
<ul style="list-style-type: none">– Fire inspection report and sound insulation report guarantee independently tested safety– Two screws allow an easy adjustment to suit the outer pipe diameter– Combination connecting nut with thread M8/M10– Approvals are only valid for FRS and FRS zl																																																	
<p>Galvanizing variants: zinc-plated steel, 5–9 µm Additional zinc flake coating a2 or A4 stainless steel</p>																																																	
<div><div><p>Fire resistance classification R120 according DIN EN 1363-1</p></div><div><p>German standard regulations for fire safety requirements for pipingsystems (11/2005) Minimum distance ≤ 50 mm</p></div></div> <div><p>sound insulation tested</p></div>																																																	
<p>Secure fixing for pipes with threaded rods or stud screws (also when there are fire protection requirements)</p>																																																	
<p>Load range: 1,0–2,5 kN</p>	<p>Clamping range: 12 mm to 168 mm</p>																																																
<p>Sound insulation insert: With or without insert, kind of insert (EPDM, silicone,)</p>																																																	

Pipe clamp FRSM - metric / inch																																																																																																	
	<p>The large pipe clamp with sound insulation insert for medium to heavy loads</p>																																																																																																
	<table><tr><td colspan="16">Maximum tensile load / metric: 800 kg (8,0 kN)</td></tr><tr><td>0,4</td><td>0,6</td><td>0,8</td><td>1,0</td><td>1,5</td><td>1,8</td><td>2,5</td><td>3,0</td><td>4,0</td><td>5,0</td><td>6,0</td><td>8,0</td><td>11,0</td><td>13,0</td><td>15,0</td><td>17,0</td></tr><tr><td colspan="6">light</td><td colspan="5">medium weight</td><td colspan="5">heavy-weight</td></tr><tr><td colspan="16">Maximum tensile load / inch: 315 kg (3,15 kN)</td></tr><tr><td>0,4</td><td>0,6</td><td>0,8</td><td>1,0</td><td>1,5</td><td>1,8</td><td>2,5</td><td>3,0</td><td>4,0</td><td>5,0</td><td>6,0</td><td>8,0</td><td>11,0</td><td>13,0</td><td>15,0</td><td>17,0</td></tr><tr><td colspan="6">light</td><td colspan="5">medium weight</td><td colspan="5">heavy-weight</td></tr></table>	Maximum tensile load / metric: 800 kg (8,0 kN)																0,4	0,6	0,8	1,0	1,5	1,8	2,5	3,0	4,0	5,0	6,0	8,0	11,0	13,0	15,0	17,0	light						medium weight					heavy-weight					Maximum tensile load / inch: 315 kg (3,15 kN)																0,4	0,6	0,8	1,0	1,5	1,8	2,5	3,0	4,0	5,0	6,0	8,0	11,0	13,0	15,0	17,0	light						medium weight					heavy-weight				
	Maximum tensile load / metric: 800 kg (8,0 kN)																																																																																																
	0,4	0,6	0,8	1,0	1,5	1,8	2,5	3,0	4,0	5,0	6,0	8,0	11,0	13,0	15,0	17,0																																																																																	
	light						medium weight					heavy-weight																																																																																					
Maximum tensile load / inch: 315 kg (3,15 kN)																																																																																																	
0,4	0,6	0,8	1,0	1,5	1,8	2,5	3,0	4,0	5,0	6,0	8,0	11,0	13,0	15,0	17,0																																																																																		
light						medium weight					heavy-weight																																																																																						
<ul style="list-style-type: none">– High tested loads guarantee safe and secure use– Connecting nut metric for M10/M12, M12/M16 or M16– Perforated pipe strip from diameter 124 mm metric– Inch connecting nut ½"																																																																																																	
<p>Zinc plating: zinc-plated steel, 5–9 µm</p>																																																																																																	
<table><tr><td colspan="2">Secure fixing of medium to heavy pipes with threaded rods or stud screws</td></tr><tr><td>Load range: 2,5–8,0 kN/m. 1,5–3,15 kN/inch.</td><td>Clamping range: 19mm to 508mm/m. 14mm to 169 mm/inch.</td></tr><tr><td colspan="2">Sound insulation insert: With or without insert, kind of insert (EPDM, silicone,)</td></tr></table>		Secure fixing of medium to heavy pipes with threaded rods or stud screws		Load range: 2,5–8,0 kN/m. 1,5–3,15 kN/inch.	Clamping range: 19mm to 508mm/m. 14mm to 169 mm/inch.	Sound insulation insert: With or without insert, kind of insert (EPDM, silicone,)																																																																																											
Secure fixing of medium to heavy pipes with threaded rods or stud screws																																																																																																	
Load range: 2,5–8,0 kN/m. 1,5–3,15 kN/inch.	Clamping range: 19mm to 508mm/m. 14mm to 169 mm/inch.																																																																																																
Sound insulation insert: With or without insert, kind of insert (EPDM, silicone,)																																																																																																	

Note: The load specification of load types applies respectively to the largest size pipe clamps.

Product overview

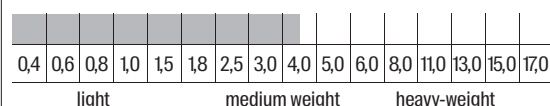
The fischer cold clamps assortment.

FRSK refrigeration clamp

The two-screw refrigeration pipe clamp with variable clamping range and rapid-locking-mechanism



Maximum tensile load: 344 kg (3,4 kN)



- Variable clamping range for adaptation to pipe diameters
- Rapid-locking-mechanism for easy and safe installation (up to Ø 141,2 mm)
- Connection nut with combination thread M8/M10

Galvanisation:
Galvanised, 5–9 µm

Installation of pipelines in refrigeration and air-conditioning technology

Load range:
0,05–3,44 kN

Clamping range:
10,5 mm to 219 mm

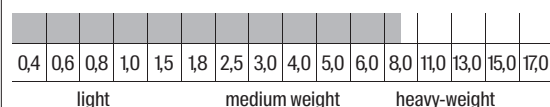
Material:
Polyurethanschaum (PIR), 80/120 kg/m³, FCKW, HFKW, HFCKW, PBDE and Formaldehyd-free, silicone-free surface

KFT refrigeration clamp

The two-screw refrigeration pipe clamp made of closed PUR foam



Maximum tensile load: 700 kg (7,0 kN)



- PUR clamp body enables the handling of high loads
- Glued soft foam inlay reduces the assembly effort
- Connection nut with combi triple thread M8/M10/1/2"

Galvanisation:
Galvanised, 5–9 µm

Installation of pipelines in refrigeration and air-conditioning technology

Load range:
0,15–7,0 kN

Clamping range:
9,5 to 323,9 mm


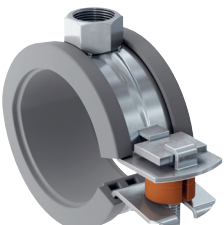

Material:
Closed-cell polyurethane foam (PUR), 250 kg/m³, silicone-free

Note: The load specification of load types applies respectively to the largest size pipe clamps.

Compass

Overview of the temperature range and load level.

Overview temperature range		
<p>≥ 100 °C / silicone FRSH pipe clamp</p> 	<p>≤ 100 °C / EPDM All pipe clamps with black inlay</p> 	<p>≤ Room temperature / PUR, PIR, FEF, ... Refrigeration pipe clamps FRSK, KFT</p> 

Overview of load level			
Line types	Two-screw	Single screw clamps	Two-screw with rapid locking mechanism
			
Light	–	FGRS / FGRS Universal / FKS	–
Medium weight	FRS / FRSM inch	–	FRS-L Universal
Heavy weight	FRSM metric	–	–

Compass

Which pipe clamp for which application?

Service pipe systems for light pipe clamps													
Pipe clamps	Heating	Cooling	Steam	Ventilation	Water	Rain water, waste water	Sprinkler	Gases and compressed air	Medical gases	Process lines	Electric cable pipe and ductwork for cables	Water and waste water treatment	Energy and water supply
FGRS Universal	•	-	-	-	•	-	-	•	•	•	-	•	•
FGRS	•	-	-	-	•	-	-	•	•	•	-	•	•
FKS	•	-	-	-	•	-	-	•	•	•	-	•	•
FUBD	-	-	-	-	-	-	-	-	-	-	•	-	-

Service pipe systems for medium weight pipe clamps													
Pipe clamps	Heating	Cooling	Steam	Ventilation	Water	Rain water, waste water	Sprinkler	Gases and compressed air	Medical gases	Process lines	Electric cable pipe and ductwork for cables	Water and waste water treatment	Energy and water supply
FRS-L Universal	•	-	-	-	•	-	-	•	•	•	-	•	•
FRS Triple	•	-	-	-	•	-	-	•	•	•	-	•	•
FRS	•	-	-	-	•	•	-	•	•	•	-	•	•
FRSH	◦	-	•	-	-	-	-	-	-	-	-	-	-
FRSN Triple	•	-	-	-	•	•	-	•	•	•	-	•	•
FRSN	•	-	-	-	•	•	-	•	•	•	◦	•	•
FRSM zoll	•	-	-	-	•	•	-	•	•	•	-	•	•
FRS K	-	•	-	-	-	-	-	-	-	-	-	-	-
KFT	-	•	-	-	-	-	-	-	-	-	-	-	-
FRSP (FM)	-	-	-	-	-	-	•	-	-	-	-	-	-
FRSL (VdS)	-	-	-	-	-	-	•	-	-	-	-	-	-
LGS	-	-	-	•	-	-	-	-	-	-	-	-	-

◦ Possible • Recommended

Service pipe systems for heavy weight pipe clamps													
Pipe clamps	Heating	Cooling	Steam	Ventilation	Water	Rain water, waste water	Sprinkler	Gases and compressed air	Medical gases	Process lines	Electric cable pipe and ductwork for cables	Water and waste water treatment	Energy and water supply
FRSM metric	•	-	-	-	•	•	-	•	•	•	-	•	•

Note: While choosing the clamps, the load per clamp is required.

NEW.

**Refrigeration pipe clamp FRSK.
The variable refrigeration
pipe clamp with flexible
clamping range and
rapid-locking-mechanism.**



Loads

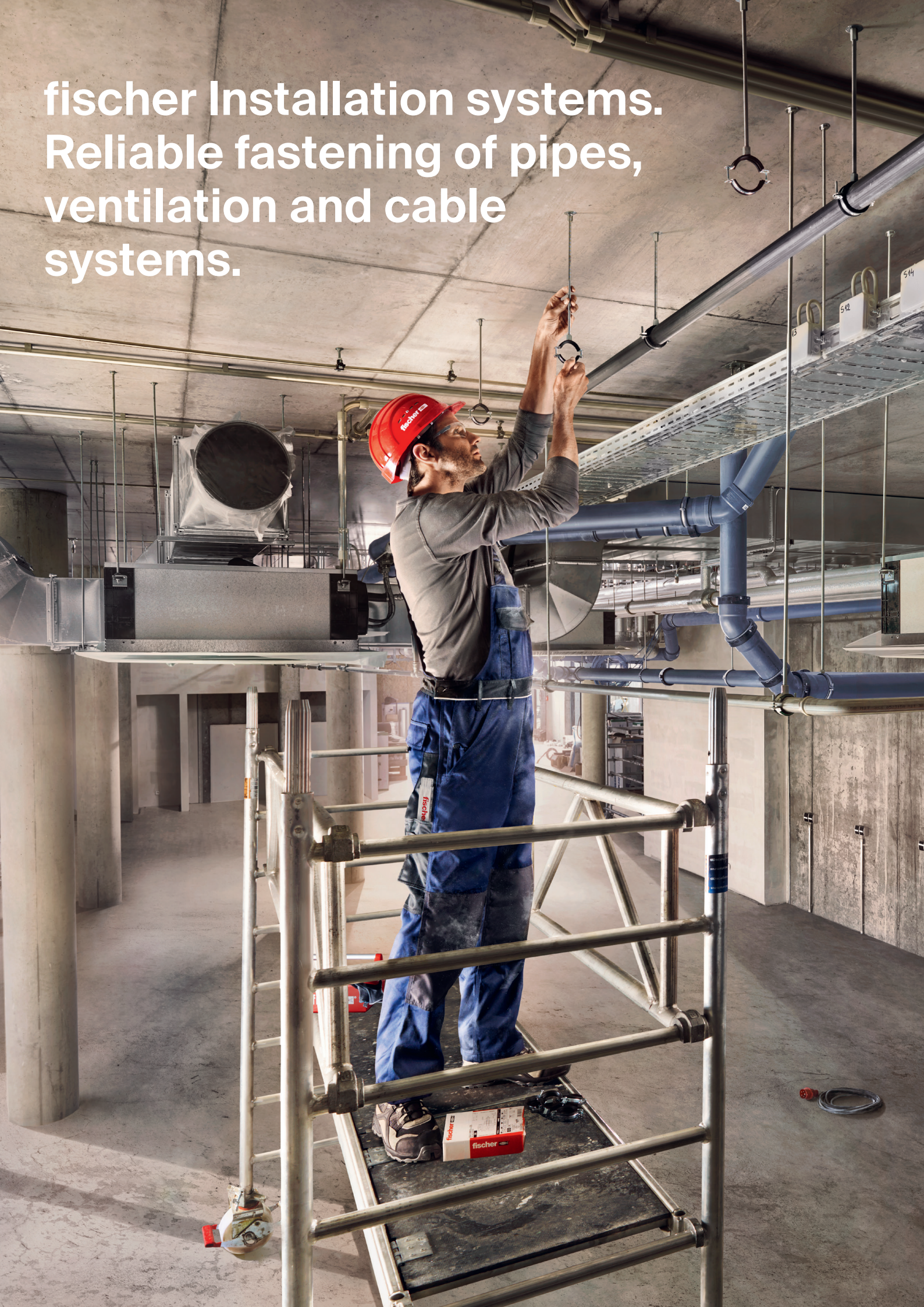
Note:

The stated load ranges are a guide and do not correspond with the exact clamping ranges of the pipe clamps.

These are available in the catalogue documents. Load details are in kg.

Overview table of clamping ranges and outside pipe diameters										
Clamping range [mm]	FGRS Universal	FGRS	FKS	FRS-L Universal	FRS(N) Triple	FRS	FRSH	FRSN	FRSM inch	FRSM metric
< 8										
8										
12										
14										
15	70	80	65	100						
19										
37										
38										
40						100	100		150	250
63	100	90	90	114				150		
64					100					
65										
66										
67										
68										
72										
73										
83						150				
91	130			169			130			
92										
95										
100						200				
102										
103										
115										
116										
119					150			250	315	300
120							200			
121						250				
168				239						
169										
172										
175										
200						300		250		
203										
205										
206										
210						300		250		500
219										
328										
348										
508										800

fischer Installation systems.
Reliable fastening of pipes,
ventilation and cable
systems.



fischer Service.

Our 360° service to you.

From software solutions, to training, to personal consulting. As a reliable partner, we are always happy to assist you with words and deeds.



Design Software FiXperience Suite.

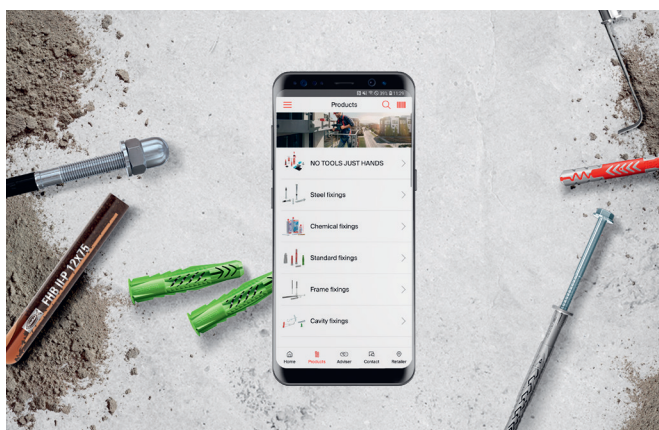
The fischer design Software FiXperience gives you safe and reliable support in measuring your projects whether you are a planer, structural engineer or craftsman. Measuring has never been so simple!

Test it now and download it for free:
www.fischer-international.com/fixperience



fischer PRO. The Mobile Guide to Fixing Solutions for Professionals.

The fischer PRO App is a mobile guide to fixing solutions offering professionals the opportunity to quickly and easily find out about products, identify the right fixing solution through the digital guide and/or find a local dealer. Download now from Apple App Store or Google Play Store.



Dealer:

www.fischer-international.com



fischer stands for

Fixing Systems
Automotive
fischertechnik
Consulting
Electronic Solutions

fischerwerke GmbH & Co. KG
Klaus-Fischer-Straße 1 · 72178 Waldachtal
Germany
T +49 7443 12 - 0
www.fischer-international.com · info@fischer.de
