

Press release

IoT hygiene flush upgrade: Drinking water hygiene safely under control

Practical at every level with the TECESmartconnect web application

Water must flow: The planning, installation and safe operation of every drinking water installation are based on this simple but indispensable principle. Regular water exchange to prevent stagnation is essential. With solutions from TECE, everyone is on the safe side: without any flushing schedules, complex installation or additional inspection openings. Hygiene flushes are controlled and logged simply via app or, as a brand new feature, via the TECESmartconnect web application.

From centralised facility management via remote access, to programming many devices at the same time or quickly locating individual devices on site for servicing: The innovative TECESmartconnect web application offers a wide range of practical functions for plumbers, operators and facility managers, from commissioning to monitoring and documentation. Maintaining drinking water hygiene is particularly demanding in public institutions such as schools, sports centres, office buildings and hotels. Complex pipe systems, different usage intensities or frequent downtimes, for example during holidays, significantly increase the risk of stagnation and contamination. Operators are faced with the challenge of reliably ensuring the exchange of water in all areas of the system in order to guarantee compliance with legal requirements and hygiene standards. The tried and tested TECEprofil toilet modules with integrated hygiene flush supply all necessary components completely pre-assembled, including Bluetooth and mesh radio module and transformer. On site, only the water connections have to be made and the transformer connected. Technical innovation: In future, the integrated temperature sensors will enable precise temperature-controlled flushing up to a specified temperature and secure the maximum volume to prevent it from running through if the storage tank is too cold. If the required temperature is not reached during volume-controlled flushing, a warning signal is automatically triggered.

Simple in every case

With large properties or the operation of systems at several locations, conventional methods for monitoring drinking water hygiene often reach their limits. This is where TECE IoT remote access offers a clever solution, allowing even large systems to be conveniently programmed and controlled.

The wireless mesh network technology spans a stable and secure network across all participating devices up to the gateway without the need for kilometres of bus cable. With this energy-saving technology, not every device has to reach the gateway itself. Even in the event of a device failure, communication remains stable via neighbouring devices. Alternatively, the hygiene flush can be connected to a building management system (BMS) interface via potential-free contacts. This interface is independent of the system and is compatible with any BMS. The flush intervals for hot and cold water can be flexibly controlled via input signals. The flush volume can be programmed via the opening time of the valves with a constant flow rate (5 l/min). In addition, the two output signals offer

the possibility of transmitting and logging flushing processes carried out by the hygiene flush to the BMS.

TECEsmartconnect web application simplifies the monitoring of drinking water hygiene

Clear dashboards in the TECEsmartconnect web application help you to easily maintain an overview at every level. If several properties are managed by a centralised facility management team, the dashboard at the highest level provides a quick overview of all buildings and all installed devices. Error or status messages, logs and documentation as well as various programmes are displayed comprehensively at a glance. For detailed information, individual buildings, floor plan views or devices can be specifically accessed from the application. Operators also have the option of viewing status reports for individual buildings, storing floor plans and creating various statistics on flushing processes or water consumption. The IoT upgrade is available from June 2025.

Images

Image source: TECE GmbH

Download link: bm2go.de/tece

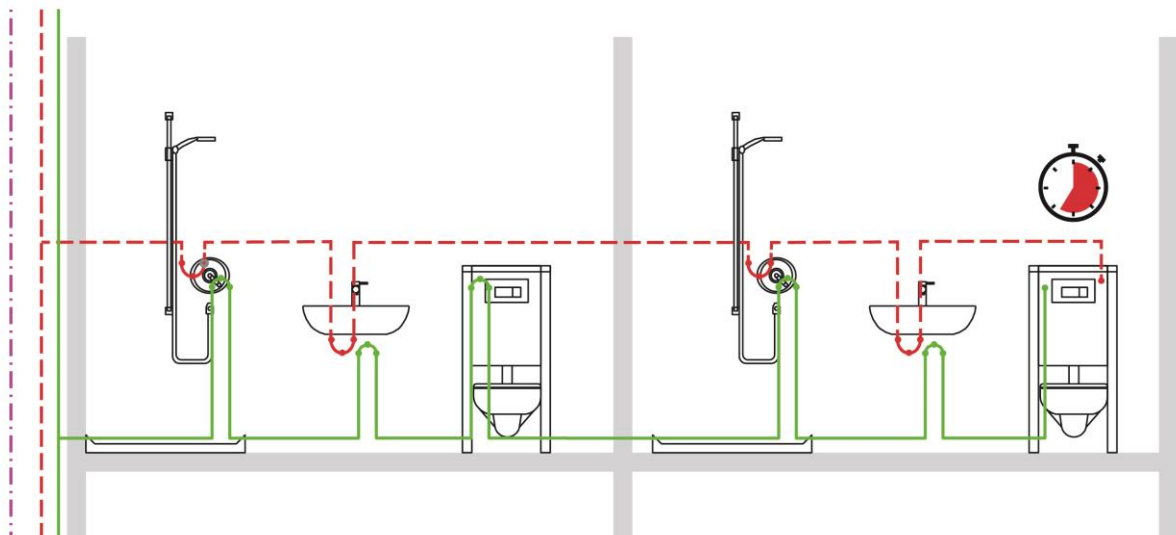


Figure 1 Installing TECEprofil toilet modules with integrated hygiene flush allows for convenient, individual control of row or ring installations with cold and hot water installations, whether in a closed room or across several rooms.

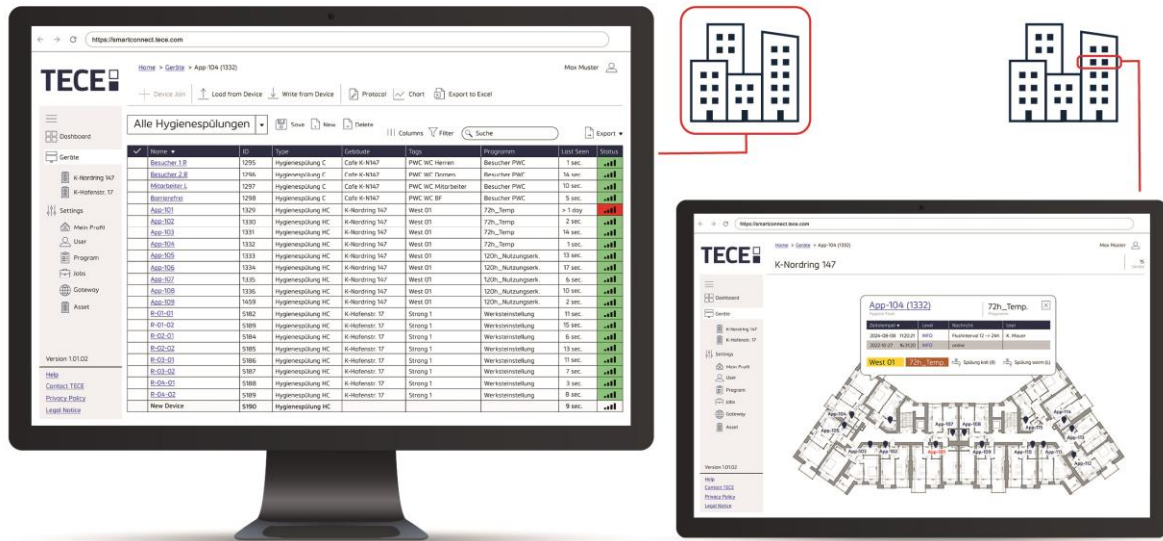


Figure 2 The TECESmartconnect web application offers a wide range of practical functions for plumbers, operators and facility managers, from commissioning to monitoring and documentation. Clear dashboards make it easy to maintain an overview at every level.

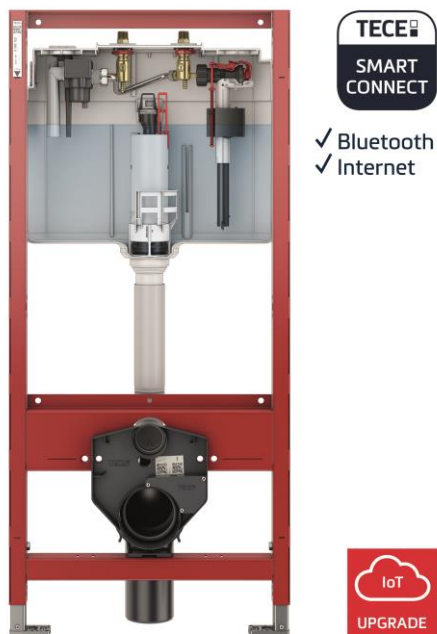


Figure 3 Drinking water hygiene safely under control: TECEprofil toilet modules with integrated hygiene flush supply all necessary components completely pre-assembled, including Bluetooth and mesh radio module and transformer.

About TECE

Closeness is a matter of understanding

For over 30 years, TECE has worked as an independent family business close to people and markets. In direct dialogue with customers and partners, the company develops innovative solutions in the areas of architecture, planning and installation.

Today, pre-wall, flushing and toilet technology are just as much part of the company's areas of expertise as drainage and pipe systems.

TECE is active worldwide and employs almost 1700 people. International sales are handled by 22 subsidiaries and additional sales partners.

Published by:

TECE GmbH

Hollefeldstrasse 57

DE-48282 Emsdetten, Germany

Telephone: +49 2572 928 0

Email: info@tece.de

Web: www.tece.de

TECE press contact:

Nadja Rapien

Hollefeldstrasse 57

DE-48282 Emsdetten, Germany

Telephone: +49 2572 928 275

Email: nadja.rapien@tece.de

TECE PR agency:

Blue Moon CC GmbH

Gisa Weingartz

Friedrichstraße 8

41460 Neuss

Telephone: +49 2131 66 15 668

Email: g.weingartz@bluemoon.de