

Press Release

New TECEdrainway shower channel generation: Well-thought-out design, easily and quickly assembled

More than 20 years of experience in linear drainage for showers - this is what the sanitary and installation specialist TECE from Emsdetten, Germany, stands for. Over the years, a large number of pioneering products have been launched on the market. Now it's time for a new generation of shower channels: TECEdrainway combines minimalist, architectural design with an extremely narrow drain. Special attention has also been paid to simple and quick installation.

Floor-level showers have now become the absolute standard - this variant is very popular in both new builds and renovations, in private bathrooms as well as in hotels, wellness centres and the like. The discreet integration of the shower channel in the transition between the wall and floor tiles offers a particularly elegant solution for the shower area. The innovative TECEdrainway shower channel generation has been specially developed for this area and offers a large tolerance range during installation. Generous adjustment options allow for simple and precise installation. Thanks to the clever positioning of the shower channel - 1 to 2 mm behind the top edge of the wall and floor tiles – the transition between the tiles and the shower channel appears discreet and unobtrusive.

Position flexibly – customise individually

With customisable lengths, TECEdrainway offers a solution for almost any bathroom design: The stainless steel profile is available in lengths of 110 cm and 160 cm and can be customised to fit flush with the recess. HVAC experts benefit from a universally applicable product that sets no limits, even in complex building situations. The drain can be aligned as required, regardless of the connection point of the waste water pipe. This means that the connection can be made easily and without the use of complex moulded parts – saving time and additional connection points in the screed. When the sloped screed is finally removed, neither cover caps nor other fittings get in the way. The sealing collar is also a real helper for professionals who prioritise easy handling: It is particularly smooth to work with and prevents creases or folds in the composite seal.

Clever details with a big effect

TECEDrainway sets new standards in drainage technology with optimised flow conditions and practical self-cleaning. A slightly twisted cross-section (vortex impulse geometry) in the rear part of the drain creates a vortex-shaped water movement that noticeably accelerates and intensifies the drainage. The integrated 3D gradient of the TECEdrainway shower channel improves the water flow, creating a practical self-cleaning effect and compensating for possible structural tolerances. Hair gets directly into the waste water pipe without getting caught on corners or edges. According to DIN EN 1253-1, 4.2.1 drains should allow for mechanical cleaning of the waste water pipes. With a 6 mm cleaning

spiral or a flexible 6 mm high-pressure hose, any deposits can therefore also be easily removed in the connection pipe.

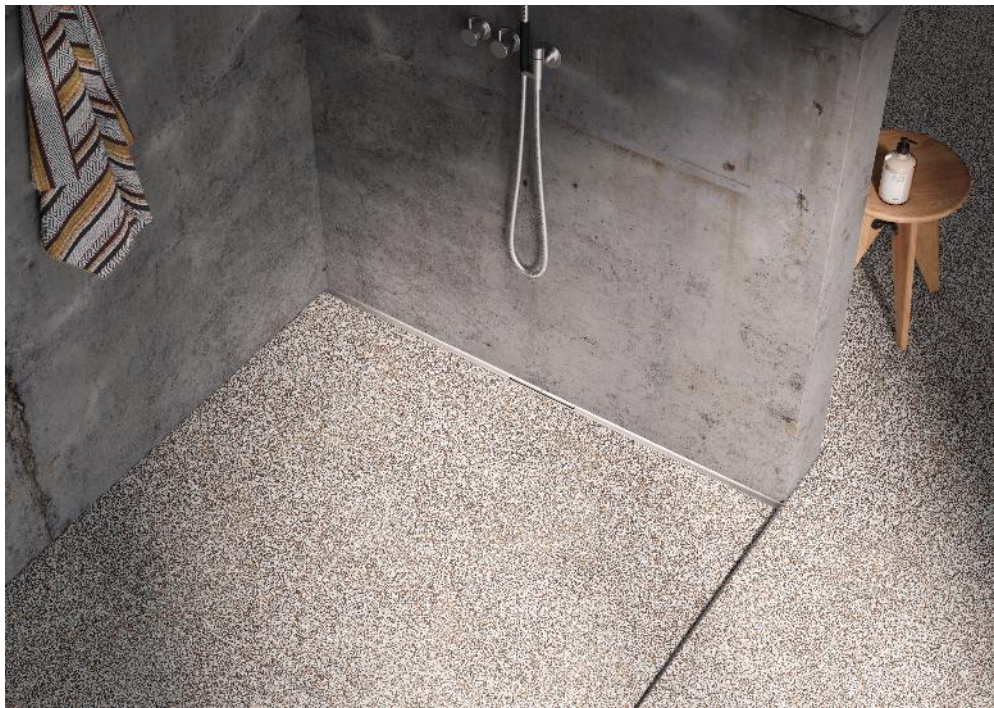
Colour harmony and surface finish

When choosing a new shower channel, attractive design is just as important as ease of use. Whether harmonious tone-on-tone combinations or high-contrast colour accents, the possibilities of TECEdrainway are diverse and flexibly follow individual design preferences. Available in four colour variants - brushed black, brushed bronze, brushed brass and brushed stainless steel - the shower channel is an elegant eye-catcher and blends seamlessly into the bathroom ambience. The PVD surface finish provides effective protection against scratches and ensures a long-lasting, elegant look. This advanced process combines exciting colour quality and brilliance that remains durable even under intensive user stress. TECEdrainway will be available from September 2025.

Images

Image source: TECE GmbH

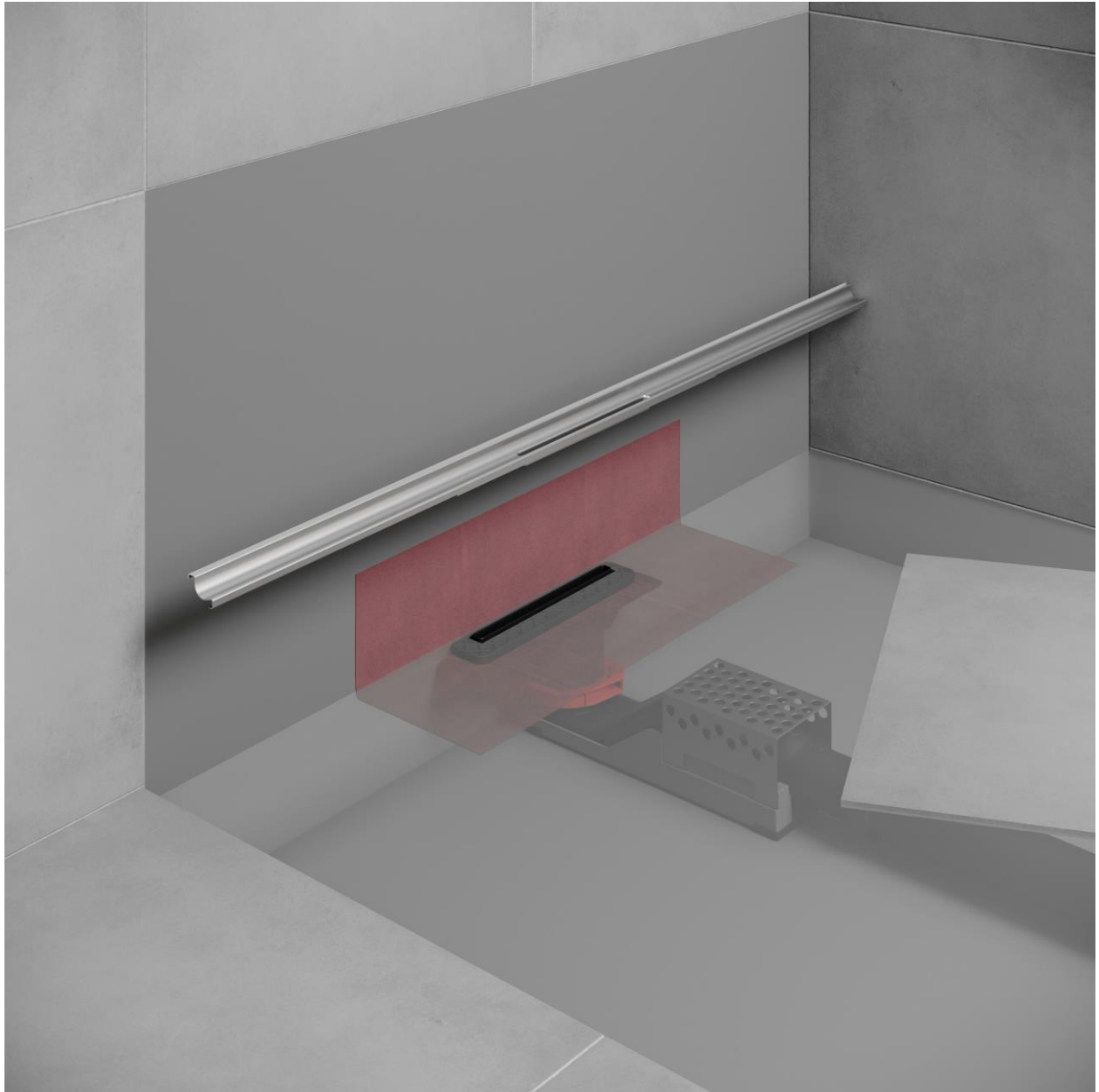
Download link: bm2go.de/tece



The innovative TECEdrainway shower channel generation has been specially developed for the transition between wall and floor and offers a large tolerance range during installation.



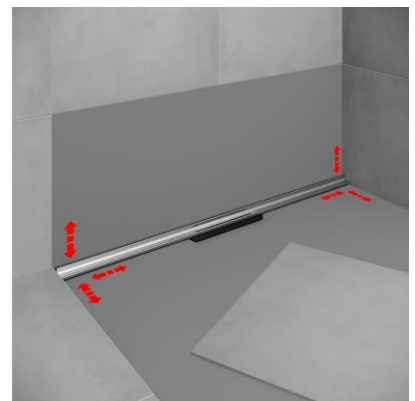
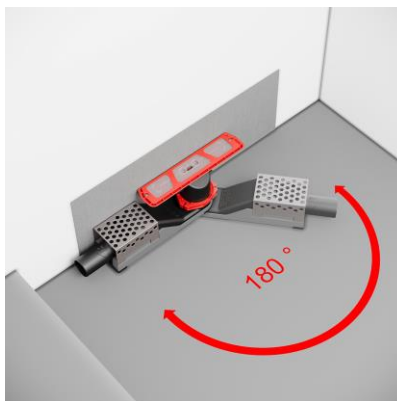
TECEdrainway combines minimalist, architectural design with an extremely narrow drain.



TECEdrainway can be optimally cut to fit the dimensions of the shower area, seamlessly blending into the transition between wall and floor. The integrated 3D slope compensates for construction tolerances, while the adjustment disc ensures exact positioning of the shower profile.



The integrated 3D gradient of the TECEdrainway shower channel optimises the water flow in such a way that a practical self-cleaning effect is created and possible structural tolerances are compensated for. Hair is flushed directly into the waste water pipe without getting caught on corners or edges.



The stainless steel profile is available in lengths of 110 cm and 160 cm and can be customised to fit flush with the recess. The drain can be aligned as required, regardless of the connection point of the waste water pipe, so that the connection to the waste water pipe can be made easily and without complex moulded parts.

About TECE

Closeness is a matter of understanding

For over 30 years, TECE has worked as an independent family business close to people and markets. In direct dialogue with customers and partners, the company develops innovative solutions in the areas of architecture, planning and installation.

Today, pre-wall, flushing and toilet technology are just as much part of the company's areas of expertise as drainage and pipe systems.

TECE is active worldwide and employs almost 1700 people. International sales are handled by 22 subsidiaries and additional sales partners.

Published by:

TECE GmbH
Hollefeldstrasse 57
DE-48282 Emsdetten, Germany
Telephone: +49 2572 928 0
Email: info@tece.de
Web: www.tece.de

TECE press contact:

Nadja Rapien
Hollefeldstrasse 57
DE-48282 Emsdetten, Germany
Telephone: +49 2572 928 275
Email: nadja.rapien@tece.de

TECE PR agency:

Blue Moon CC GmbH
Gisa Weingartz
Friedrichstraße 8
41460 Neuss
Telephone: +49 2131 66 15 668
Email: g.weingartz@bluemoon.de