



TECE

NEWS

2025

New generation of shower channels
**TECEdrainway –
water's most beautiful way**

For a responsible future
**Innovative solutions for the
requirements of tomorrow**

Hygiene flush upgrade
**Drinking water hygiene safely under control –
from anywhere**

TECESolid flush plates
With a lot of style and now also without structure

Simply ingenious – ingeniously simple
30 years of TECEprofil

close to you

1



2



5



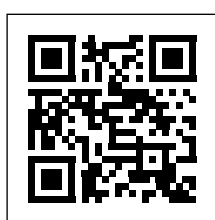
6



4



| | | |
|---|--|---------|
| 1 | TECEDrainway: Water's most beautiful way | Page 4 |
| | TECEDrainway: Hygiene & innovation in a new dimension | Page 6 |
| | TECEDrainway: Clever details with a big effect | Page 7 |
| | TECEDrainway: Optimised for installation flush with the wall | Page 8 |
| 2 | Innovative solutions for a responsible future | Page 10 |
| 3 | TECESquare toilet flush plate: Cradle to Cradle Certified® Bronze programme for TECESquare | Page 12 |
| | TECEfloor underfloor heating pipe & dry-wall panel: Saving fossil raw materials during production | Page 13 |
| | 4/2 litre for all Uni and Base cisterns: Reduced flushing please | Page 14 |
| | TECEloft toilet ceramic with 4/2 litre flush: Great combination for less water consumption | Page 15 |
| 4 | IoT hygiene flush upgrade: Drinking water hygiene safely under control – from anywhere | Page 16 |
| | IoT hygiene flush upgrade: Practical at every level – TECESmartconnect web application | Page 18 |
| | TECE product upgrades: Simply optimised | Page 20 |
| | New TECOne and TECNeo sets: Sets minimise the ordering process | Page 20 |
| | RazFaz compact: Lighter and faster installation in no time at all | Page 20 |
| | TECEShowerpoint: Point drainage at the highest level | Page 21 |
| | TECElineo shower channel set: All in one set | Page 21 |
| 5 | TECESolid flush plates: With a lot of style and now also without structure | Page 22 |
| 6 | Happy birthday TECeprofil: 30 years of pre-wall technology with system | Page 24 |
| | References: Always well advised with TECE | Page 26 |
| | TECNeo: German Design Award for TECNeo | Page 28 |



For more information, visit
<https://spotlight.tece.com/>

Editorial

A NEW ERA!

Dear Sir or Madam,
Dear Readers,

With this issue, you are holding a special edition of TECEnews in your hands. I am addressing you here for the last time, because 2025 marks a significant milestone in our history: At the beginning of the year, I handed over the baton completely to Peter Fehlings after more than 32 years in a position of responsibility and most recently ten years on the management board at TECE. The fact that a member of the owner family is once again actively steering the fortunes of the company is an expression of our desire for continuity and reliability as well as the strong identification of TECE as a family business.

Looking back, it fills me with pride to see how TECE has developed over the decades. What began as a small company in 1987 has developed into a well-established player in the industry – thanks to innovative products, committed employees, a clear vision and the courage to turn this vision into reality. Our success is based on close co-operation with our partners and the relentless pursuit of quality and practical solutions. These values are deeply rooted in the TECE DNA and will continue to determine our direction in the future.

We live in turbulent times: Geopolitical uncertainties, changes in the construction industry and the ever-increasing demands for sustainability and efficiency present us with new challenges every day. That's why it is crucial right now for us as a company not just to react, but to act with foresight and innovative strength. A while back, we started to position TECE strongly for the future. This includes modern processes and structures as well as continuous international growth. I am convinced that with Peter Fehlings and the entire management team, TECE is well on the way to continuing this successful course and setting the standard for innovation and reliability in our industry in the coming years. I am therefore looking forward to monitoring TECE's success story, now from the sidelines.

I would like to thank our partners and customers for their trust and excellent co-operation over the years. Together we have achieved a great deal.

I hope you enjoy reading this issue of TECEnews. As always, each and every one of the new products presented stands for our declared aim of making things simpler, better and more beautiful.



Hans-Joachim Sahlmann



Handing over the baton: Hans-Joachim Sahlmann
hands over to Peter Fehlings

TECEdrainway

WATER'S MOST BEAUTIFUL WAY

"In extensive workshops with our customers, we determined the ideal shower channel: stylishly present, but subtle and never disruptive. Perfect, if the shower channel was placed in the transition from wall to floor! The result is TECEdrainway."

Christian Hügling, Drainage Systems Product Manager at TECE



The perfect installation situation

A particularly elegant installation solution in the shower area is the subtle integration of the shower channel in the transition between the wall and floor tiles. The result: a stylish look that blends unobtrusively and seamlessly into the ambience – present without being dominant.

Over 20 years of experience in linear drainage for showers – that's what TECE stands for. Now it's time for a new generation of shower channels: TECEdrainway combines minimalist, architectural design with a super narrow drain. For maximum spatial effect and unlimited freedom when showering.



Colour harmony and surface finish

The design is available in four colour variants: brushed black, brushed bronze, brushed brass and brushed stainless steel. Whether harmonious tone-on-tone combinations or high-contrast colour accents – the possibilities are diverse and flexibly follow individual design preferences.

The PVD surface finish provides effective protection against scratches and ensures a long-lasting, elegant look. This advanced process combines outstanding colour quality and brilliance that remains durable even under intensive user stress. Elegance that lasts and protection that impresses.



The colour spectrum of TECEdrainway: Brushed bronze, brushed brass, brushed black and brushed stainless steel.

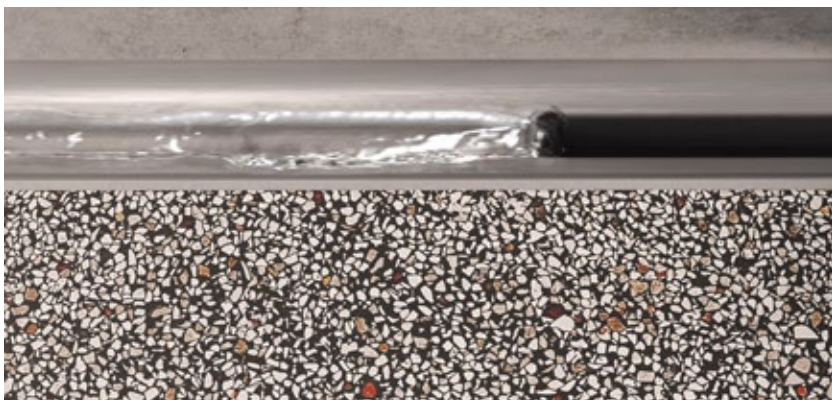
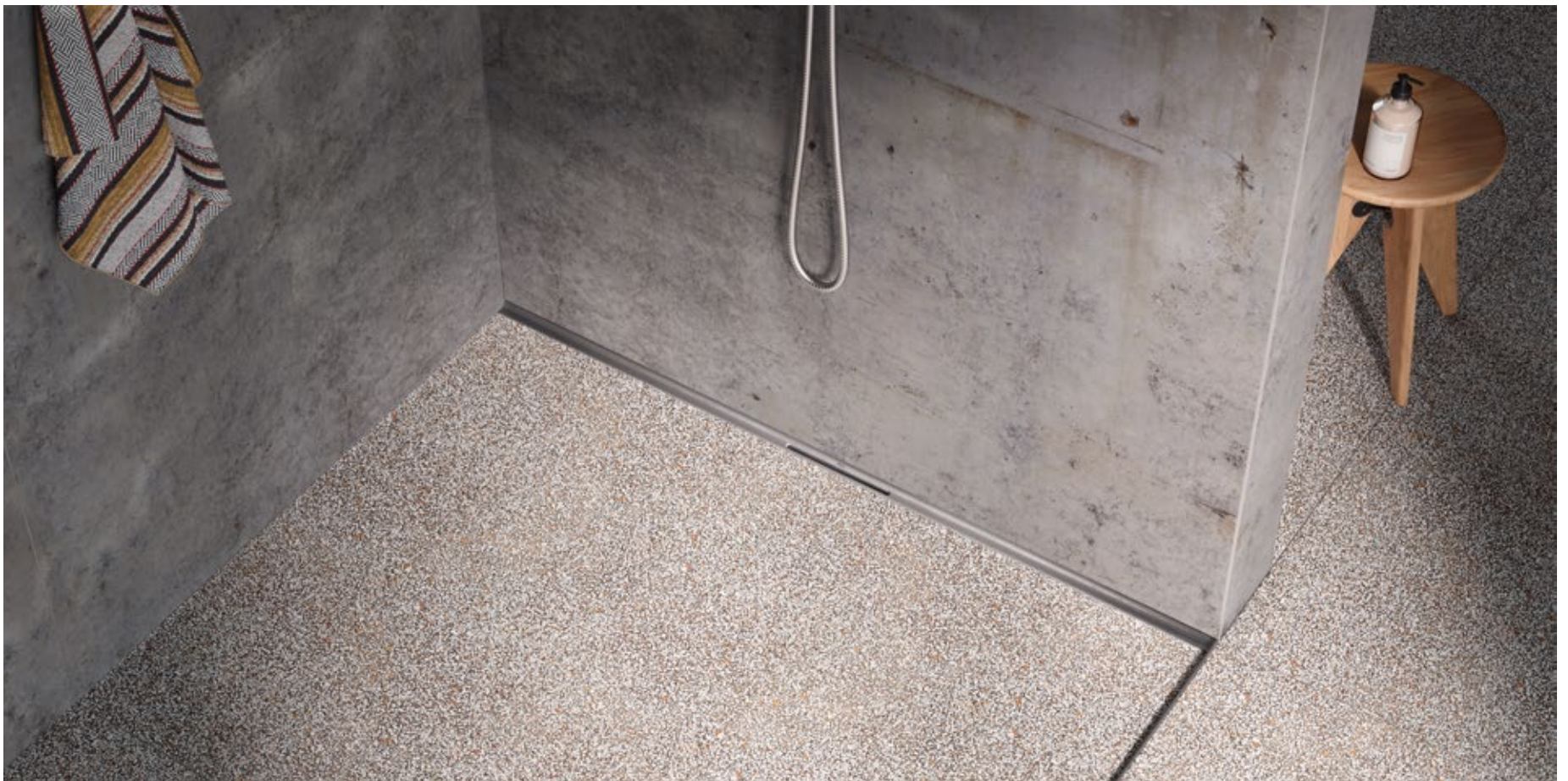
TECEdrainway

HYGIENE & INNOVATION IN A NEW DIMENSION



Clean in no time

Smooth surfaces without corners and edges for optimum water drainage. Pleasing to the eye and ideal for cleaning. Maximum hygiene and cleanliness is that simple.



Featuring self-cleaning effect

The integrated 3D gradient of the TECEdrainway channel profile optimises the water flow in such a way that a practical self-cleaning effect is created and possible structural tolerances are compensated for. Hair is flushed directly into the wastewater pipe without getting caught on corners or edges.

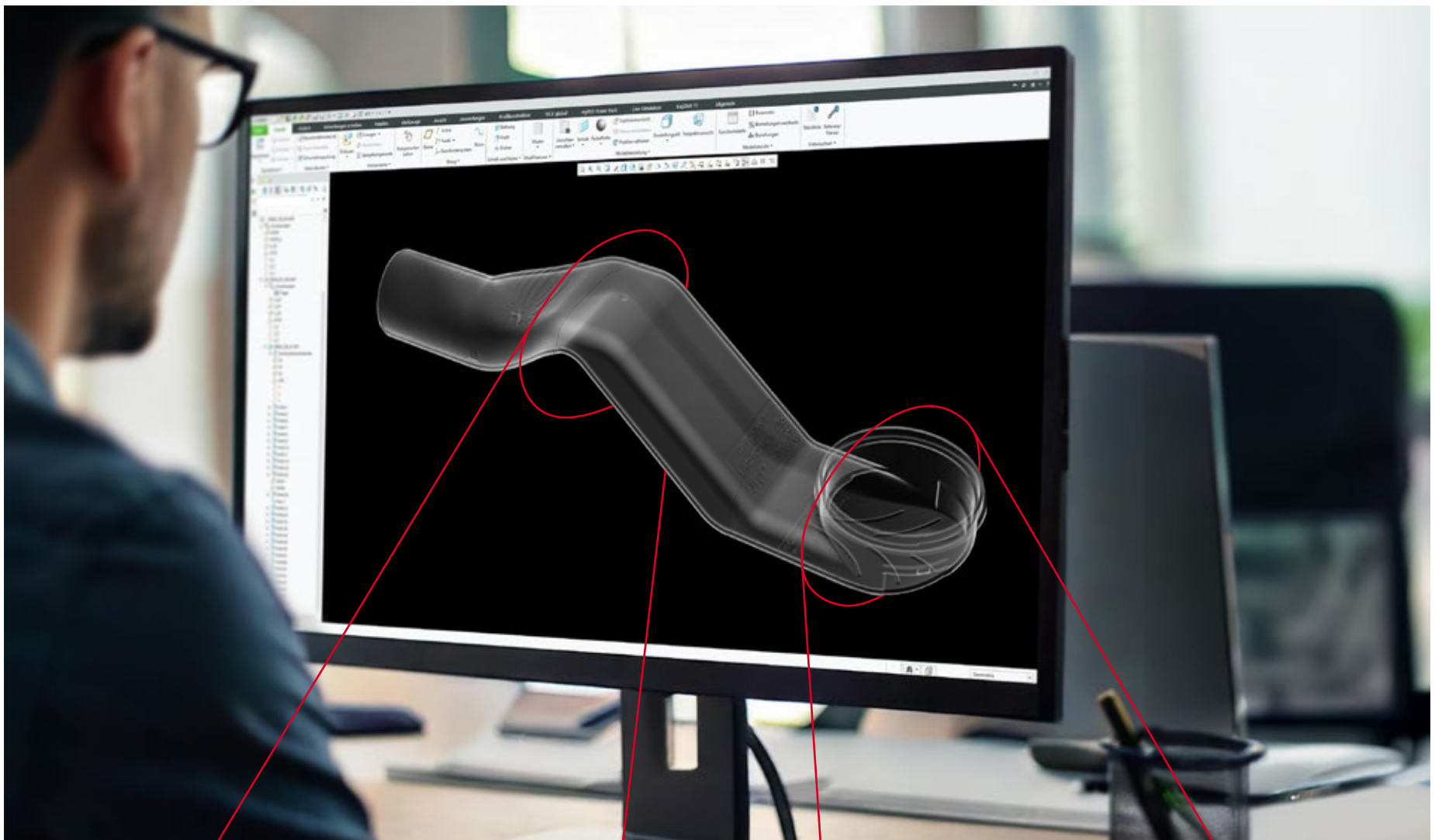


With the simplest of tools

Rinse, wipe, done: A basic cloth is all you need to clean the shower profile made of easy-care stainless steel.

CLEVER DETAILS WITH A BIG EFFECT

TECEdrainway revolutionises drainage technology with optimised flow ratios and impressive self-cleaning.



7

Vortex impulse for high drainage capacity

A specially developed vortex impulse geometry optimises the drainage capacity of the water. A slightly twisted cross-section at the rear of the drain creates a vortex-shaped water movement that noticeably accelerates and intensifies the drainage.

Nature shows us how it's done: Bionic structures

Bionic structures in the drain, inspired by nature, create micro-turbulence. They reduce deposits and increase the flow rate – for more efficient drainage of the shower water.

TECEdrainway – optimised for installation flush with the wall

SIMPLY FLUSH WITH THE WALL

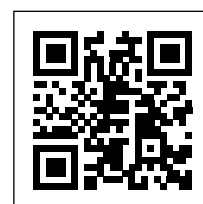
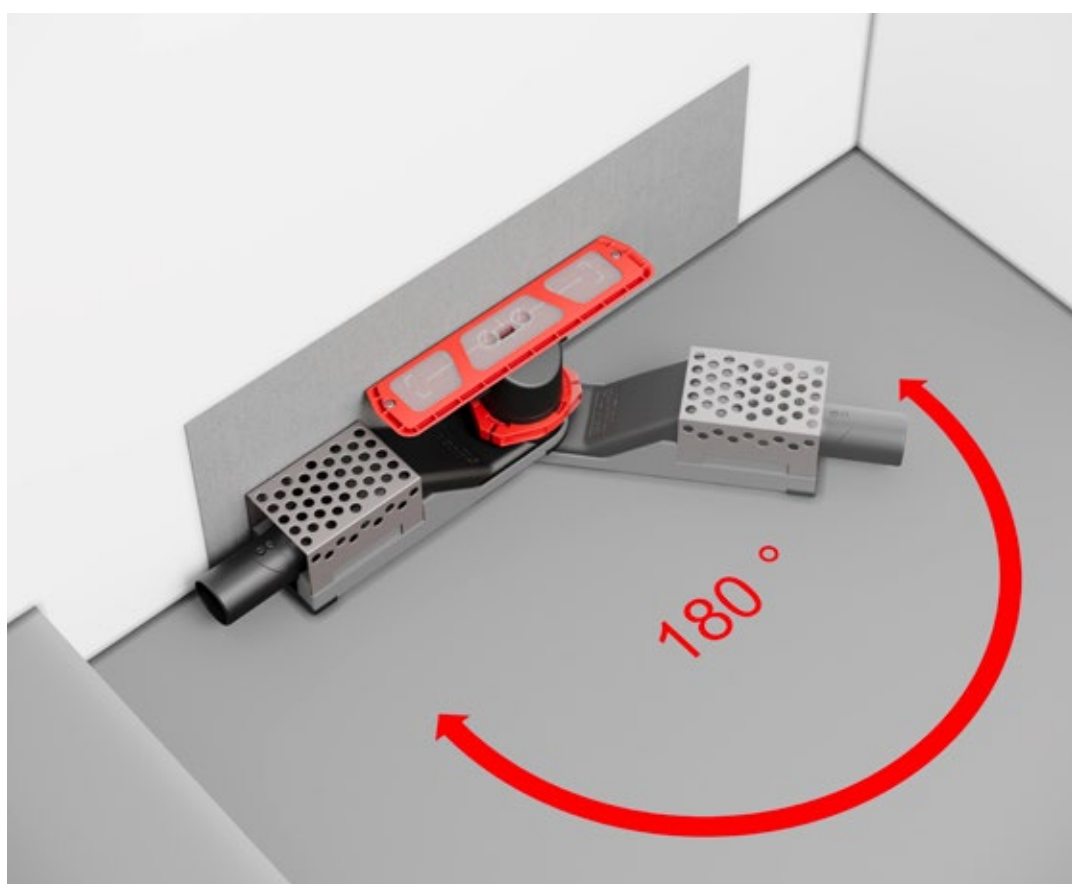
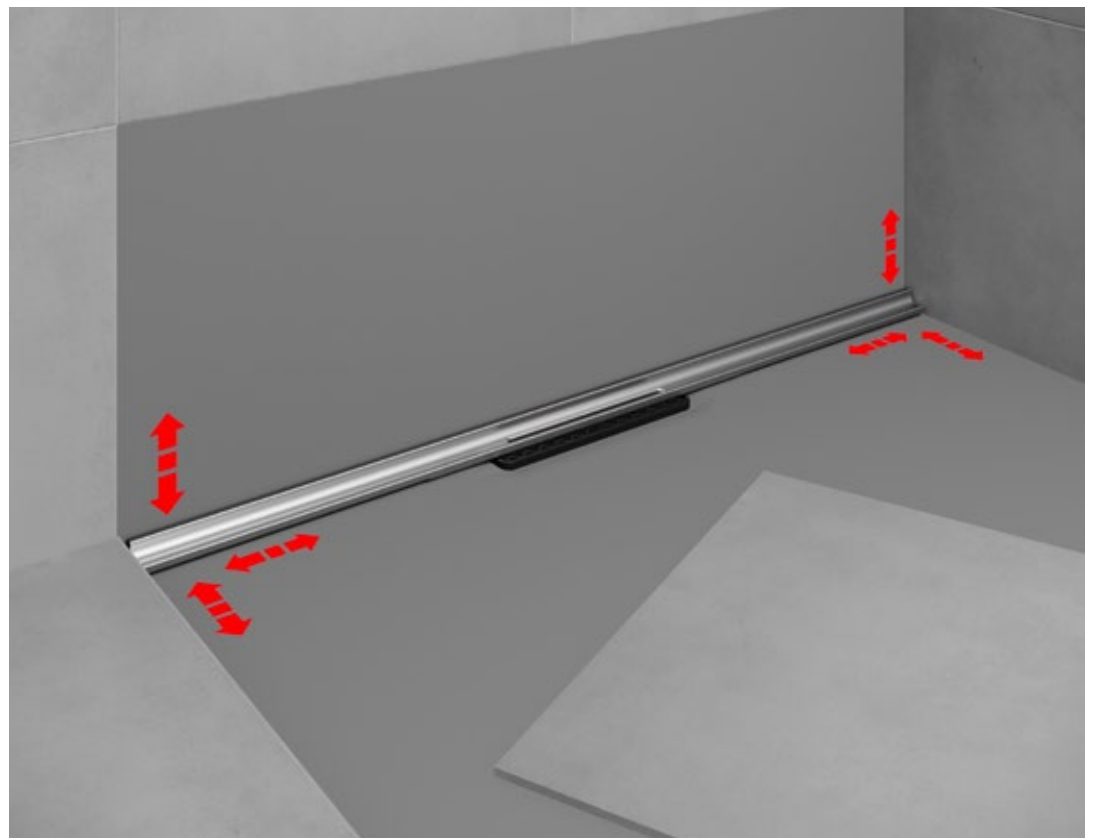
The innovative TECEdrainway shower channel features well thought-out product details that enable quick and easy assembly – ideal for precise installation, flush with the wall.

Flexible installation

TECEdrainway was specially developed for the transition between wall and floor and offers a large tolerance range during installation. Generous adjustment options allow for simple and precise installation. Thanks to the intelligent positioning of the drain profile – 1 to 2 mm behind the upper edge of the wall and floor tiles – the transition between the tiles and the drain profile appears subtle and unobtrusive.



The stainless steel profile is available in lengths of 110 cm and 160 cm and can be cut to recessed lengths.



QR code to view video

Drainage in every direction

Regardless of where the connection point of the waste water pipe continues – the TECEdrainway drain can be turned on the wall in any direction. This allows the drain and waste water pipe to be connected without a puzzle of moulded parts. Saving not only time, but also additional connection points in the screed.

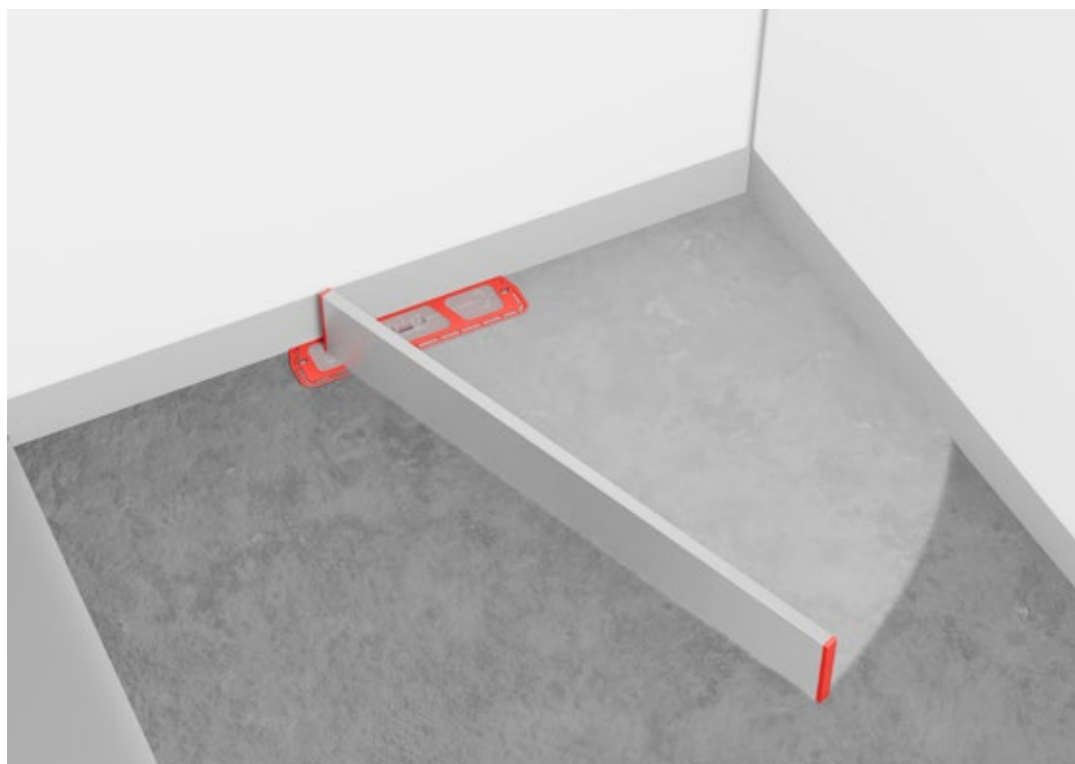


Extra soft

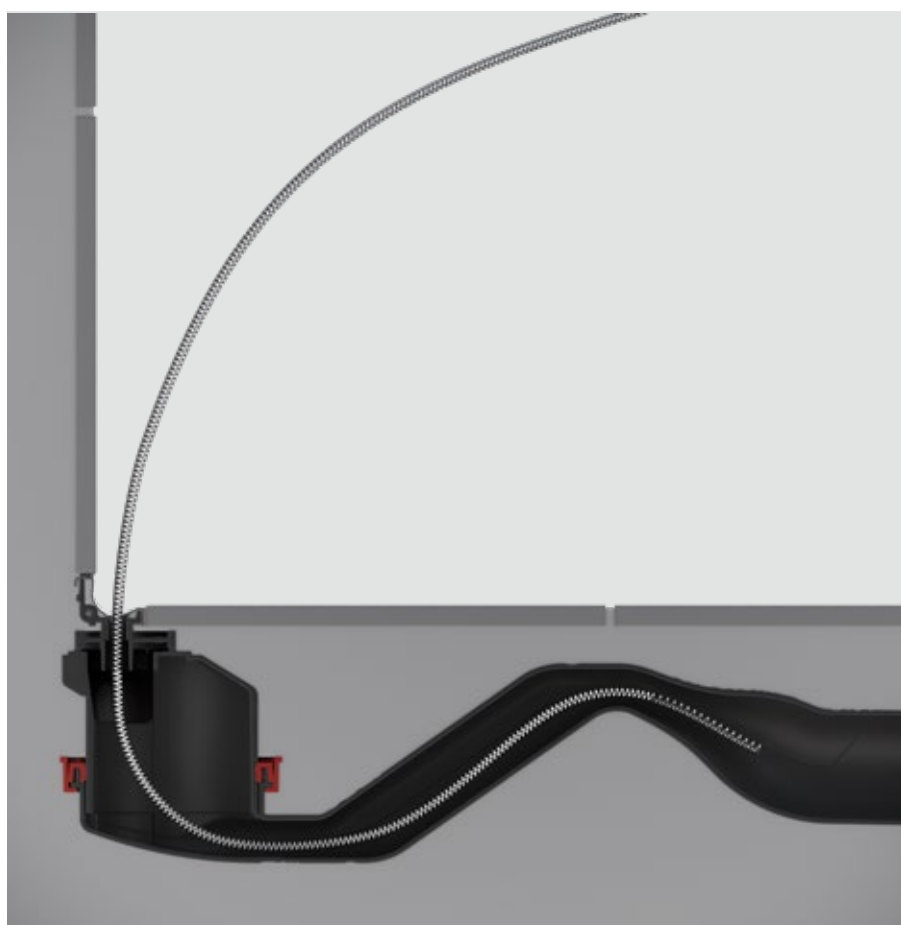
The TECEdrainway sealing collar can be processed particularly smoothly and prevents creases or folds in the composite seal. The ideal assistant for professionals who prioritise easy handling and perfect results!

Nothing gets in the way

When finally levelling the sloping screed, you don't want to have to use the levelling bar to touch any interfering covers or fixtures. With TECEdrainway, you simply pull it over the drain in one sweep and you're done! The supplied sealing collar is safely stored under the construction time protection.



9



Emergency access

Always equipped for emergencies with TECE: According to DIN EN 1253-1, 4.2.1, drains should offer the possibility of mechanical cleaning of the waste water pipes. Everything mentioned in the regulations is possible with TECE. With a 6 mm cleaning spiral or a flexible 6 mm high-pressure hose – both also in the TECE range – any deposits can be easily removed.



TECEdrainway will be available from September 2025.



TECE Campus

INNOVATIVE SOLUTIONS FOR A RESPONSIBLE FUTURE



TECE is a new IBU member

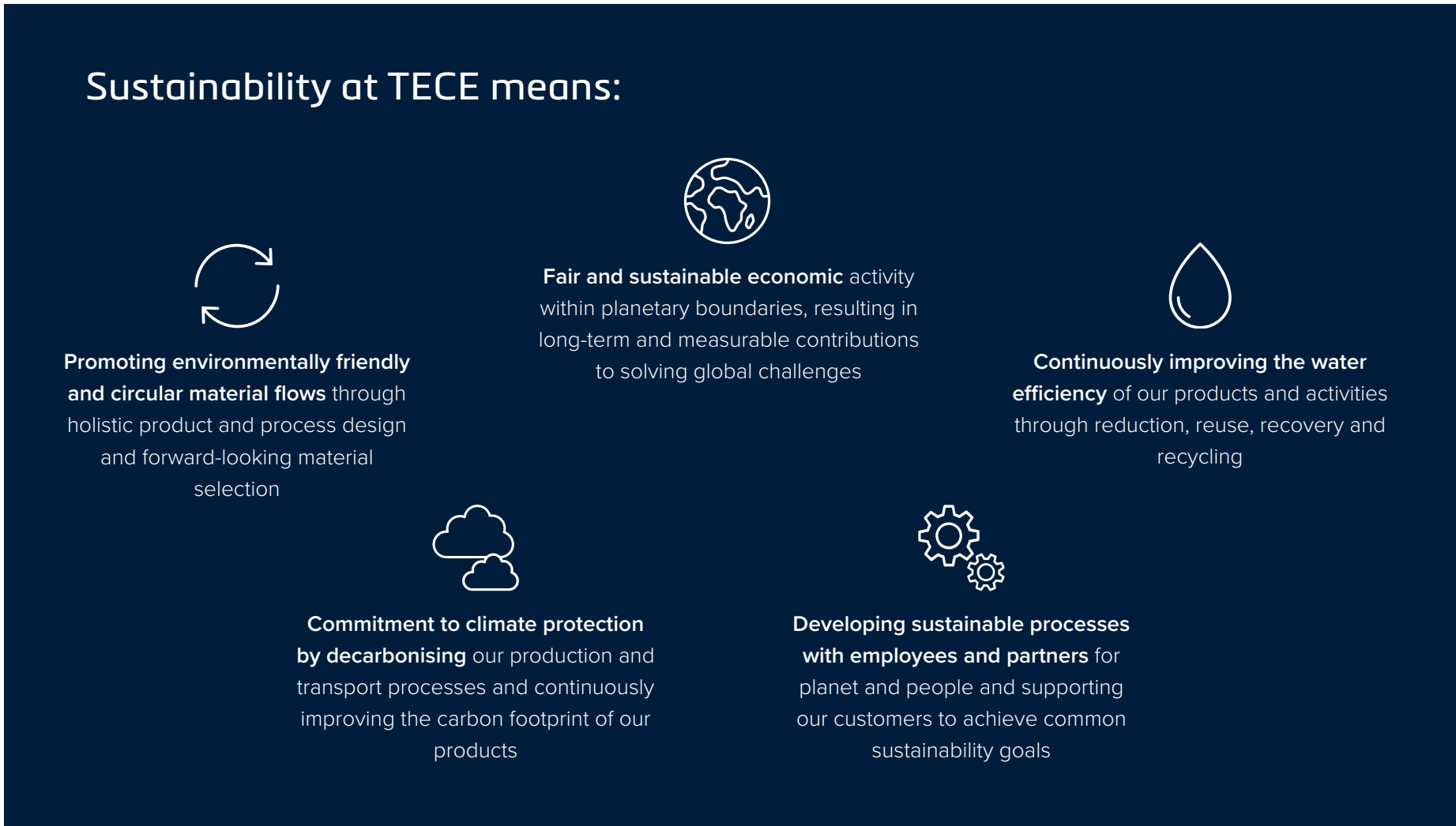
TECE has recently become a new member of the renowned Institut Bauen und Umwelt e.V. (IBU). This sends out a strong signal and strengthens our commitment to greater sustainability in the construction industry. At the same time, we are systematically promoting transparent communication of sustainable building practices. Through the creation of EPDs (Environmental Product Declarations) and transparent customer information in the IBU's declaration programme, TECE will disclose relevant environmental information on its products in future.

TECE PROVIDES SOLUTIONS TO THE CHALLENGES OF TOMORROW

Our world is changing – and so are the demands placed on the products and materials we use every day.

As a responsible company that has the needs of future generations in mind, we offer our customers customised approaches that meet the highest quality standards. In this way, we support them in meeting the increased demands for transparency. Our progressive concepts enable energy-efficient and resource-saving construction at the highest level. From the choice of materials to functionality in daily use: Our aim is to utilise our capabilities in all areas to achieve a positive impact on the environment and society. Examples include pioneering solutions that are based on renewable raw materials or that save water and energy by using them. We also focus on products that can be recycled after use.

In the following pages, we will present TECE product innovations in detail and show how TECE is setting the course for a responsible future step by step. Because we are convinced that sustainability requires attitude and action in equal measure.



"It is important to us to take responsibility in order to create long-term sustainable solutions for our customers. We are convinced that the responsible use of resources, coupled with transparent communication, is crucial for greater sustainability in the construction industry."

Johannes Strehlow, Manager Corporate Sustainability at TECE

TECEsquare toilet flush plate

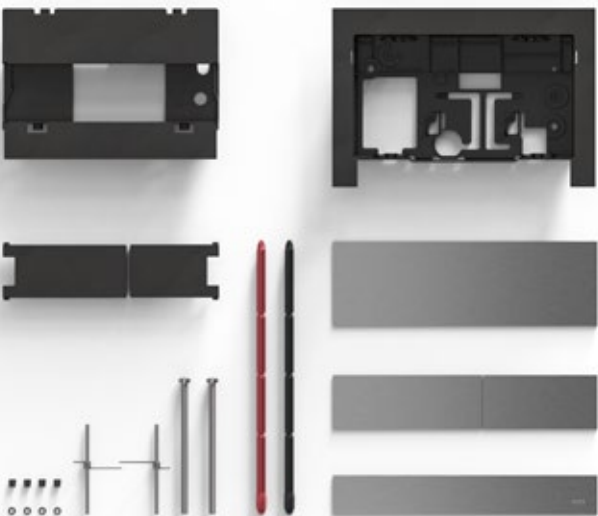
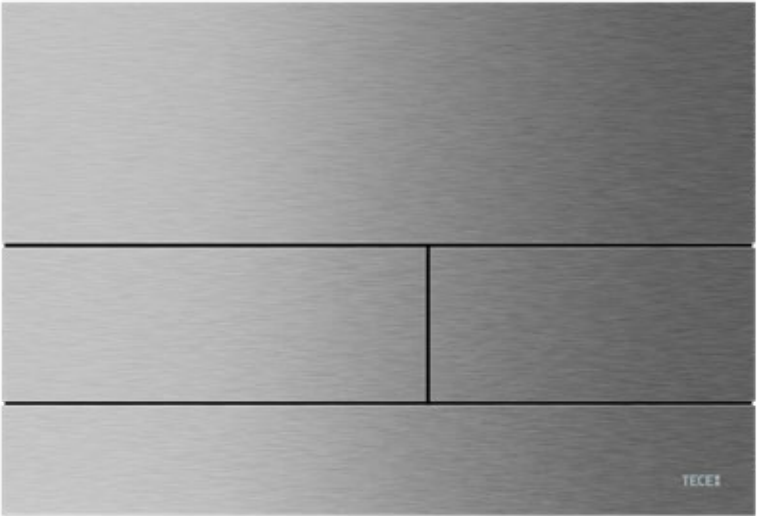
CRADLE TO CRADLE CERTIFIED® BRONZE PROGRAMME FOR TECEsquare

As part of the Cradle to Cradle certification process, TECE has tested and further developed the TECEsquare toilet flush plate for recyclability.

The Cradle to Cradle Product Innovation Institute describes requirements in the areas of material health, reusability, use of renewable energy and carbon management, water management and social fairness that affect both the product and the company.

In collaboration with C2C system partner EPEA GmbH – Part of Drees & Sommer, TECE has applied for a full certificate (bronze level) in the Cradle to Cradle Certified® programme. The data collection was finalised and submitted to the Cradle to Cradle Products Innovation Institute (C2CPII) for review. All parties involved in the assessment agree that the certification of TECEsquare products according to the Cradle to Cradle Certified® product standard can be finalised in the coming months. Cradle to Cradle® refers to an approach that consistently focusses on recyclability.

The certificate stands for resource conservation, continuous material cycles and positively defined materials that are harmless to people and the environment. No fewer than twelve surface variants of the TECEsquare toilet flush plates are in the application process. As the name Cradle to Cradle implies, the entire value chain is assessed to ensure that the products have no negative impact on people or the environment throughout their entire product life cycle.

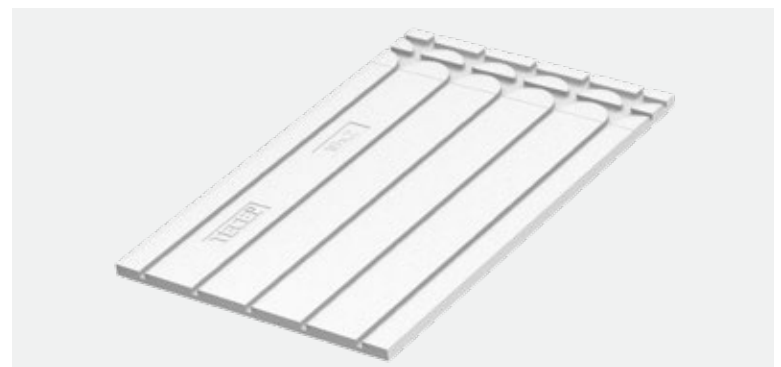


Right down to the smallest unit: All components of the TECEsquare toilet flush plate undergo the elaborate certification process in accordance with the Cradle to Cradle Certified® product standard.

TECEfloor: Underfloor heating pipe & dry-wall panel

SAVING FOSSIL RAW MATERIALS DURING PRODUCTION

With the new generation of TECEfloor PE-RT pipes and the new dry-wall panels, TECE is using the biomass balance approach (BMB) in production for the first time, thereby supporting the use of biogenic raw materials. The use of waste and residual materials from biomass enables fossil raw materials to be saved and helps to reduce greenhouse gas emissions.



TECEfloor dry-wall panel TP 30/16 BMB

- Material: expanded polystyrene EPS 035 DEO (biocircular)
- Building material class E
- Thermal conductivity: 0.035 W/mK, R = 0.77 m²K/W
- Compression strength 150 kPa at 10% compression in accordance with EN 826
- Spacing: VA 150, VA 300 (single and double meander)
- Dimensions (L x W x H): 1150 x 750 x 30 mm

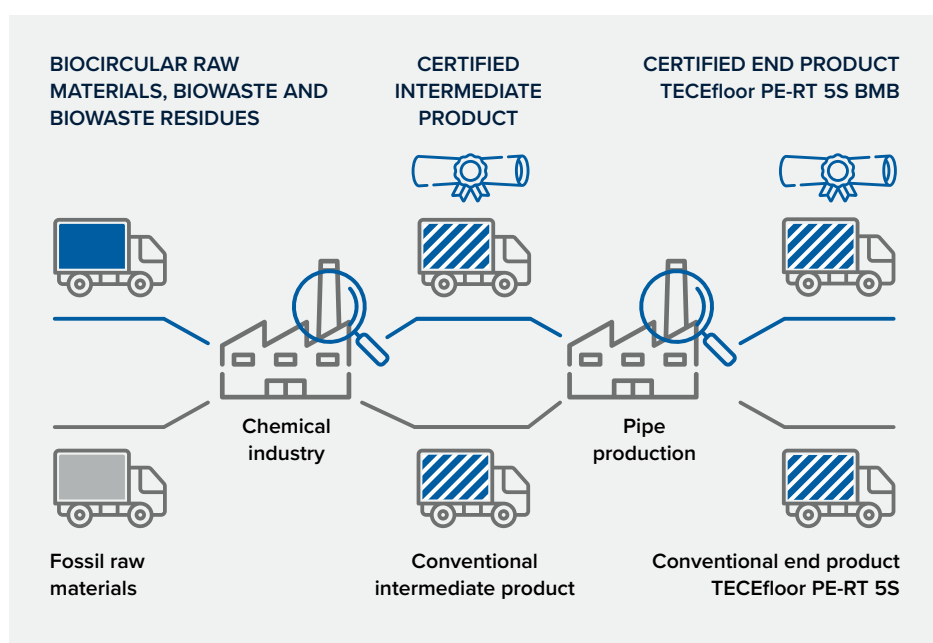
As part of the biomass balance, biogenic raw materials are used together with fossil raw materials in the production of basic chemical products in the production network. The BMB process approach makes it possible to document the origin of raw materials. In this way, both the TECEfloor underfloor heating pipe and the corresponding dry-wall panel are given a (calculated) proportion of biogenic polymers, which is the prerequisite for the official product certification of the underfloor heating pipe and dry-wall panel.



TECEfloor underfloor heating pipe PE-RT 5S BMB

- High-density polyethylene (biocircular) with increased temperature resistance (PE-RT Type2) in accordance with DIN EN 21003 (Dim. 16)
- Oxygen diffusion tight to DIN 4726
- Five-layer technology with EVOH oxygen barrier layer on the inside (high resistance to mechanical influences)
- Application class 4+5: 6 bar, Tmax. 90°C in accordance with DIN EN ISO 22391-2
- DIN CERTCO 3V423 MVR (P)

The TECEfloor BMB products will be available from summer 2025.



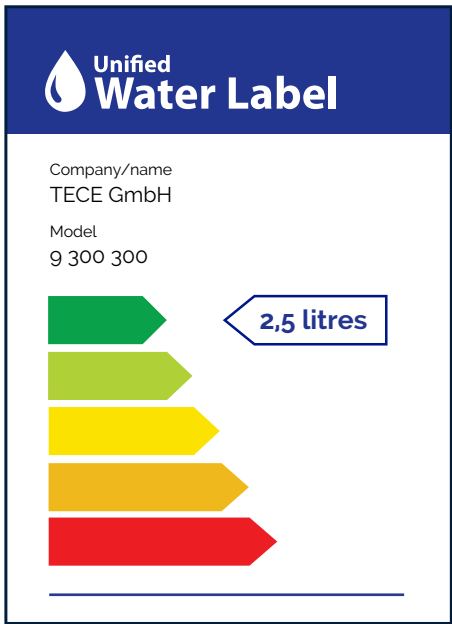
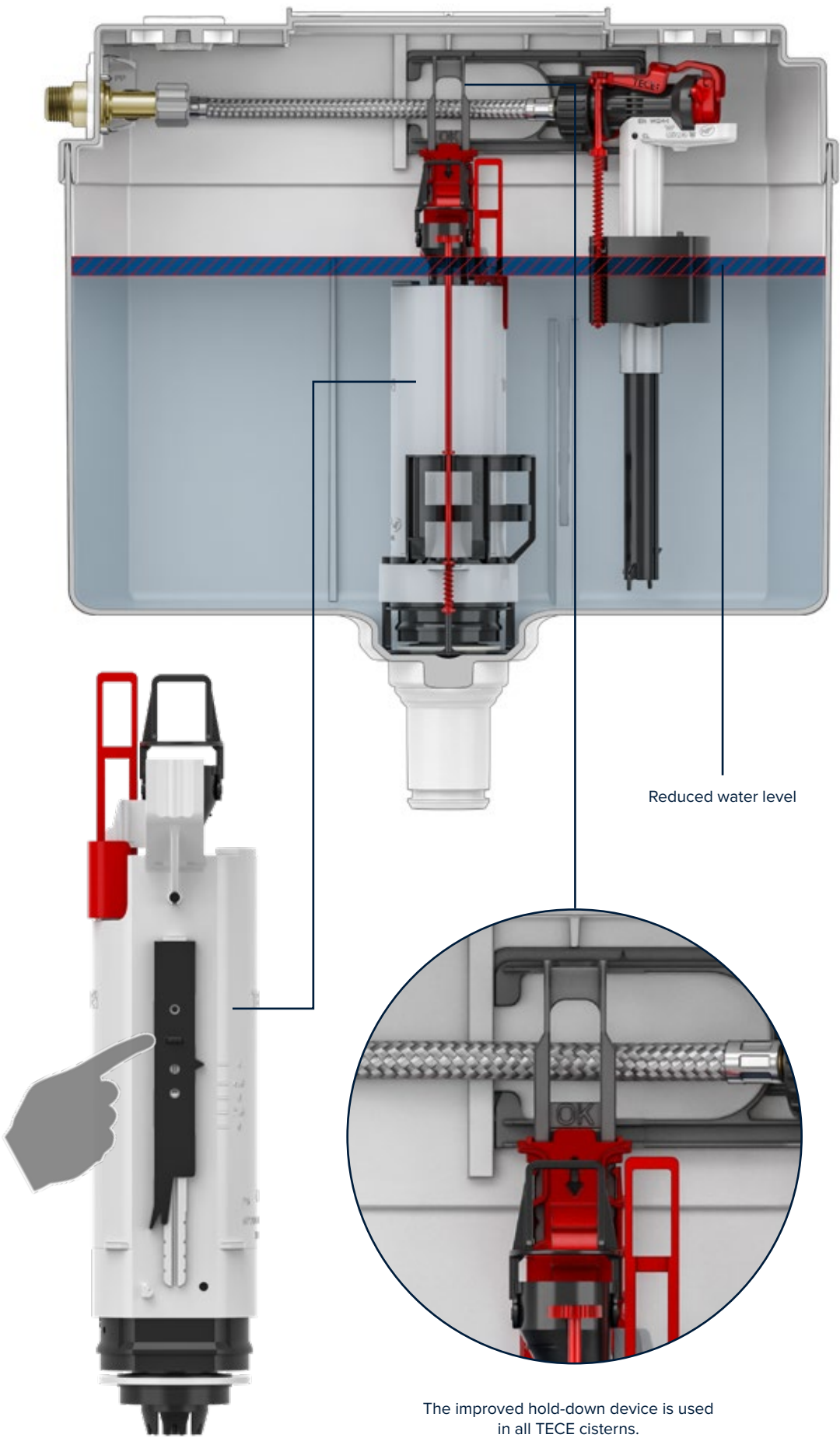
4/2 litre for all Uni and Base cisterns

REDUCED FLUSHING PLEASE

TECE now offers an elegant extension for the A2 drain valve, which has been supplemented with a 4/2 litre flush function. This optimisation makes a valuable contribution to saving water and is used in all Uni and Base cisterns.

Until now, saving water has been more of an issue for southern Europe. However, other European countries are increasingly focussing on saving valuable resources. Toilet flushing already ranks second in terms of daily water consumption after personal hygiene, accounting for 27 percent, or around 34 litres per person per day. An important lever for conserving resources of the no. 1 foodstuff – our drinking water – is therefore a reduced flush volume per process. For this reason, this function is now increasingly being requested in tenders, including internationally.

Installers can now easily set the 4 litres for the full flush and 2 litres for the small flush volume using a slider on the A2 drain valve. In addition, the water level in the cistern must be lowered by approx. 1 cm; i.e. the plumber must make the setting on the slide control of the A2 drain valve and then set the water level on the filling valve. The result is a lowered water level for the 4/2 litre flush of approximately 0.5 litres. Due to the lowered fill level, there is still 9.5 litres of water in the safety tank, so there is sufficient residual volume available as a 'backup' for immediate rinsing.



Website Unified Water Label: uwla.eu
List of registered companies and products:
uwla.eu/find-a-product

The optimised drain valve can also be integrated into already installed, old Uni and Base cisterns. This TECE 'downward compatibility' offers a great advantage, because water-saving flushing does not require the direct purchase of new cisterns. All TECE cisterns can now be equipped or retrofitted with the 4/2 litre flush. The 'overall design' of the cistern, including the optimised A2 drain valve, is tested in accordance with DIN EN 14055.

Small setting – big impact: The new 4/2 litre flush gives the Uni and Base cisterns Unified Water Label certification in the highest possible category. The Unified Water Label is a voluntary system of European bathroom manufacturers. TECE cisterns are registered in the online database of the Unified Water Label: <https://uwla.eu/find-a-product>

The 4/2 litre flush will be available from spring 2025.



Saving water every time you use the toilet has become a requirement in public and private sanitary facilities. TECE now offers the perfect system that combines toilet ceramics, flush plate and cistern with a 4/2 litre flush.

TECEloft toilet ceramic appliance with 4/2 litre flush

GREAT COMBINATION FOR LESS WATER CONSUMPTION



15



Flush efficiently and quietly with TECEloft

The cyclon flush works thoroughly and quietly in the rimless TECEloft: The toilet ceramic is effectively flushed out with a powerful vortex, even with a flush volume of 4/2 litres (see page 14). The ceramic is perfectly matched to existing TECE toilet cistern modules and TECE toilet flush plates for dual flush.

Well thought-out design & effortless installation

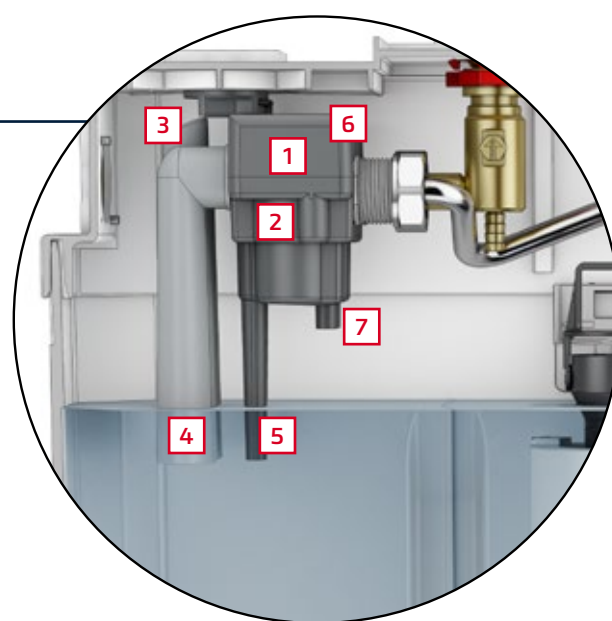
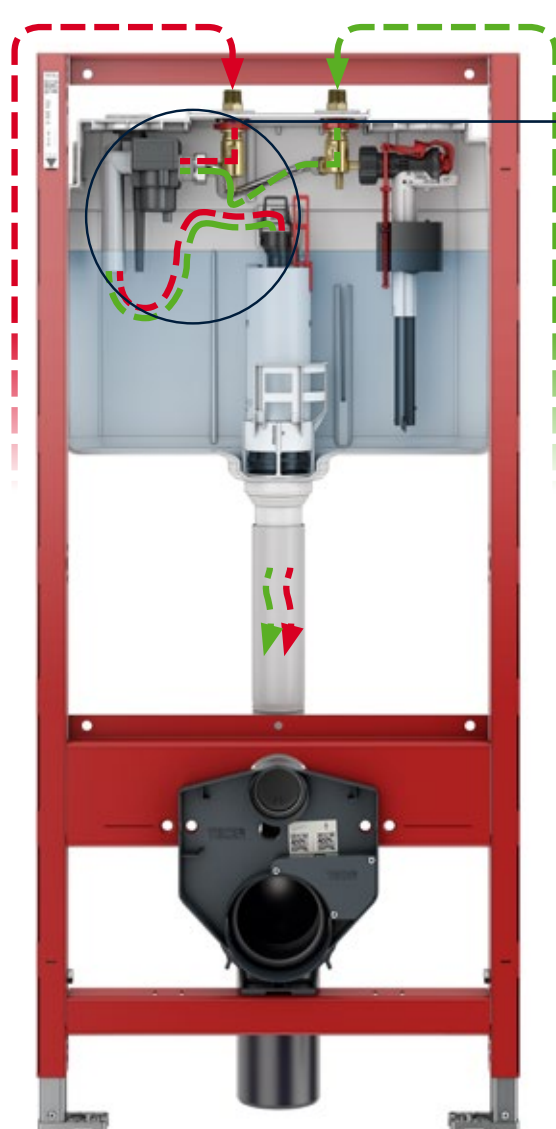
The TECEloft seat and lid are made of high-quality duroplast. The wrap-over design is also appealing, with the lid enclosing the seat to create a visual unit. The TECEloft toilet ceramic can be easily and effortlessly installed using a robust metal thread. Installation is easy from above, no complicated hinged dowels are required.



The TECEloft toilet ceramic will be available from Q3/2025.

DRINKING WATER HYGIENE SAFELY UNDER CONTROL – FROM ANYWHERE

Drinking water hygiene can be that easy. TECEprofil toilet modules with integrated hygiene flush supply all necessary components completely pre-assembled, including Bluetooth and Mesh radio module and transformer. Only the water connections and the transformer need to be connected on site.



1 Solenoid valves for hot and cold water

2 Control unit with wireless modules:
Programming via Bluetooth app, via a building management system or NEW via the TECESmartconnect web application.

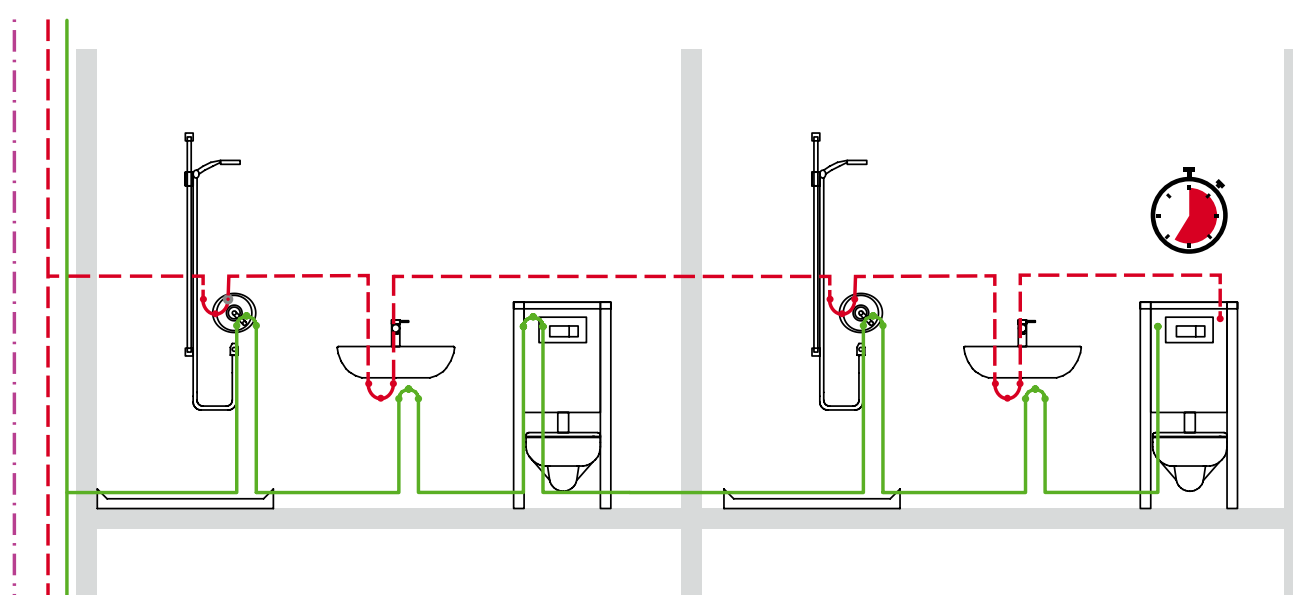
3 Protection according to DIN EN 1717:
Anti-backflow with clear outlet, immersion pipe and overflow (type AC).

4 Splash-free release into the flushing tank:
The warm water flush volume mixes with the large cistern volume from the Uni cistern.

5 Capacitive sensor for optional usage detection: If the toilet flush is activated, the timer for the hygiene flush is reset.

6 NEW Temperature sensors:
The sensors enable temperature-controlled rinsing up to a set temperature or monitoring of the temperature during volume-controlled rinsing.

7 Accident sensor for overflow detection

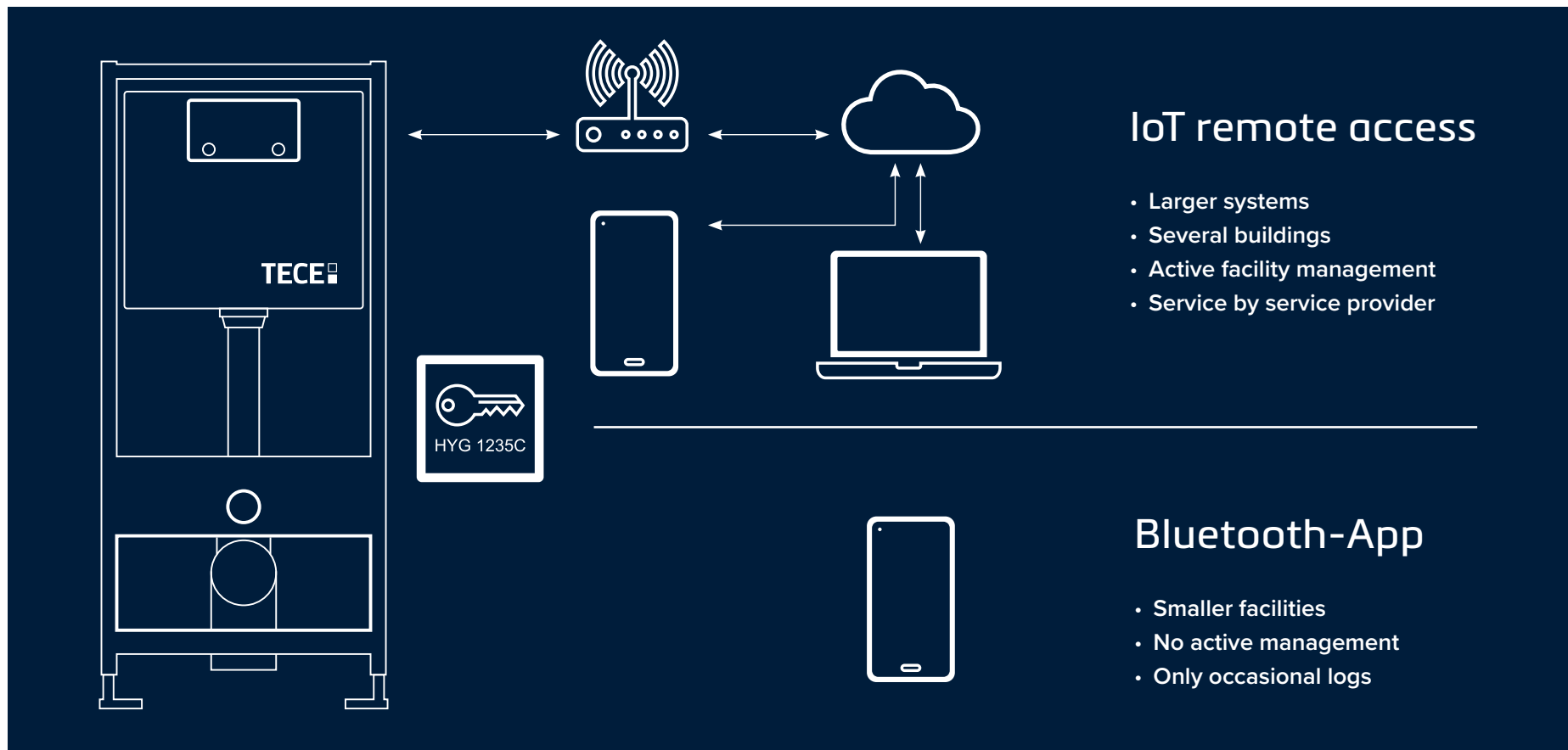


Maximum safety, minimum effort

Installing TECEprofil toilet modules with integrated hygiene flush allows for convenient, individual control of row or ring installations with cold and hot water installations, whether in a closed room or across several rooms. This ensures drinking water hygiene over entire floors in hotels or care facilities, for example – without any additional effort.

SIMPLE IN ANY CASE

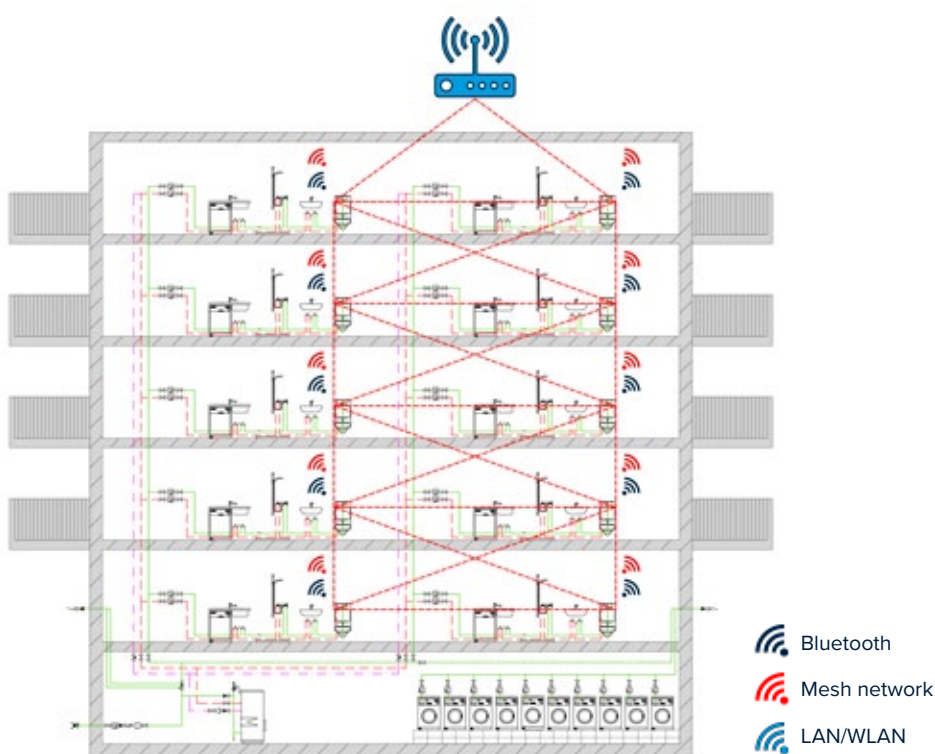
Whether it's for larger or smaller systems: With the solutions from TECE, there is something suitable for every operator of drinking water installations.



17

Without any complex Bus cables

Thanks to wireless mesh network technology, a stable and secure radio network spans all participating devices up to the gateway. With this energy-saving technology, not every device has to reach the gateway itself. If a device fails, stable communication continues via neighbouring devices.



- ✓ Bluetooth
- ✓ Internet

Programming via app for smartphone and tablet via Bluetooth directly on site or conveniently with the web application via remote access from the office. Both variants offer the full range of functions in terms of programming options for the hygiene flush.

The advantages

- Unique device assignment
- Simple programming of individual devices or groups via remote access
- Mesh technology for increased reliability during operation
- Alternatively: system-independent interface for connection to a building management system

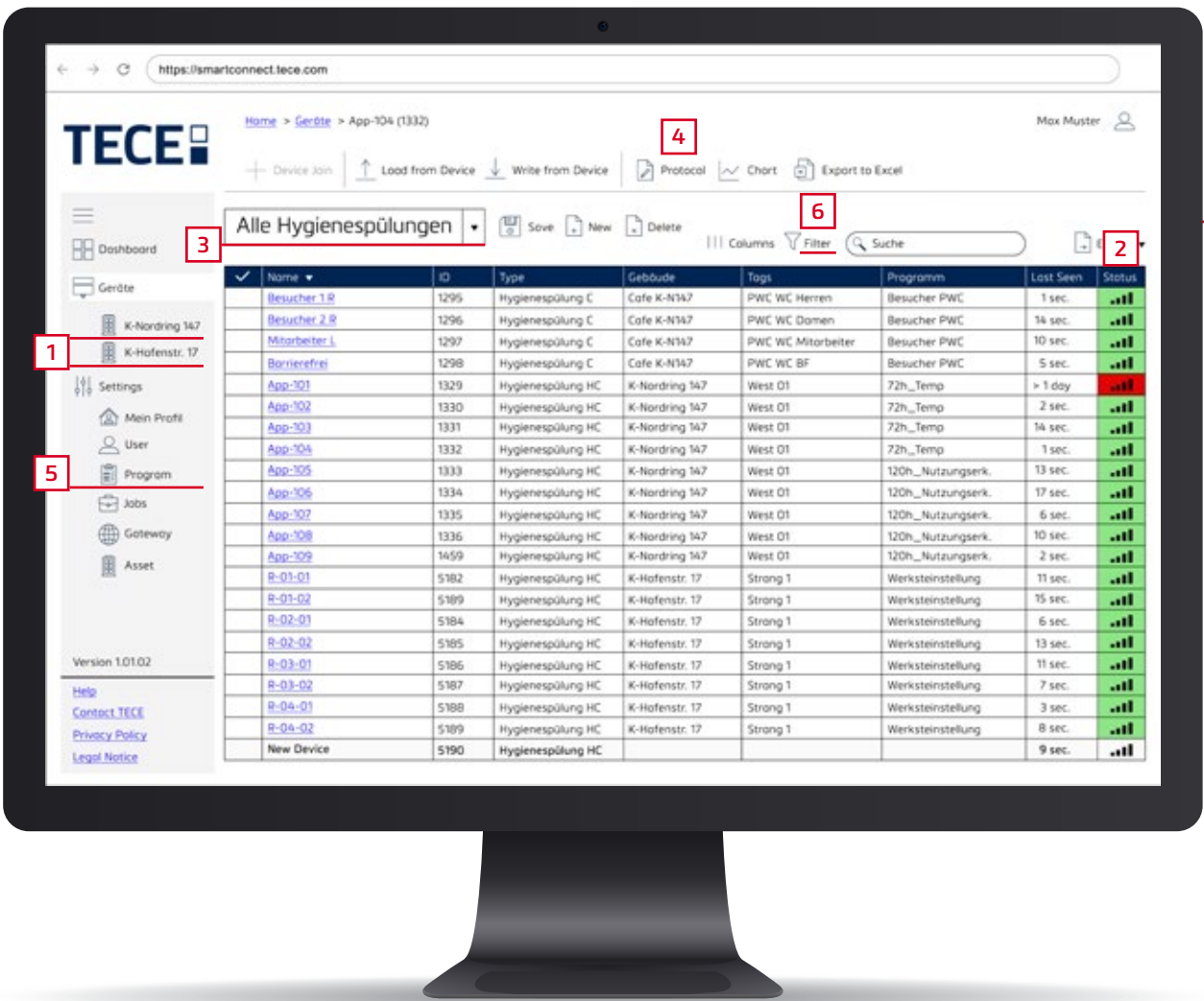


TECE Gateway allows wireless integration of a TECE hygiene flush into the TECE Mesh network.

PRACTICAL AT EVERY LEVEL: TECEsmartconnect WEB APPLICATION



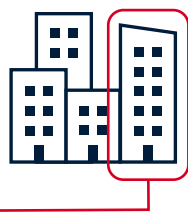
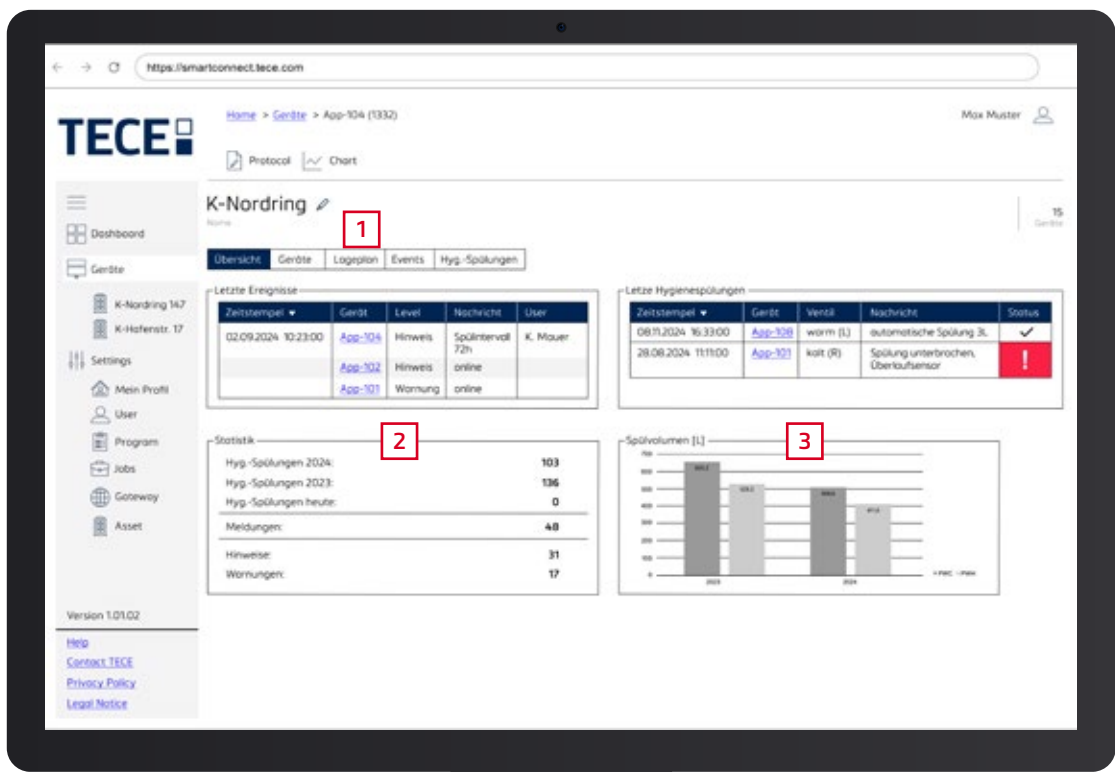
From centralised facility management via remote access, to programming many devices at the same time or quickly locating individual devices on site for servicing: TECEsmartconnect web application offers a wide range of practical functions for plumbers, operators and facility managers, from commissioning to monitoring and documentation. Clear dashboards make it easy to maintain an overview at every level.



- 1 Overview of all properties
- 2 All status messages at a glance
- 3 Filter option with freely editable filters
- 4 Log function with documentation of flushing processes
- 5 Under 'Programmes', you can create, save and assign your own programmes to appliances in addition to a range of preset flushing programmes
- 6 Create customised filters

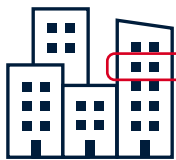
The dashboard at the 'properties' level – everything at a glance

If several properties are managed for example by a centralised facility management team, the dashboard at the highest level provides a quick overview of all buildings and all installed devices. Error or status messages, logs and documentation as well as various programmes can be displayed comprehensively and at a glance. For more detailed information, individual buildings, floor plan views or devices can be accessed directly from here.



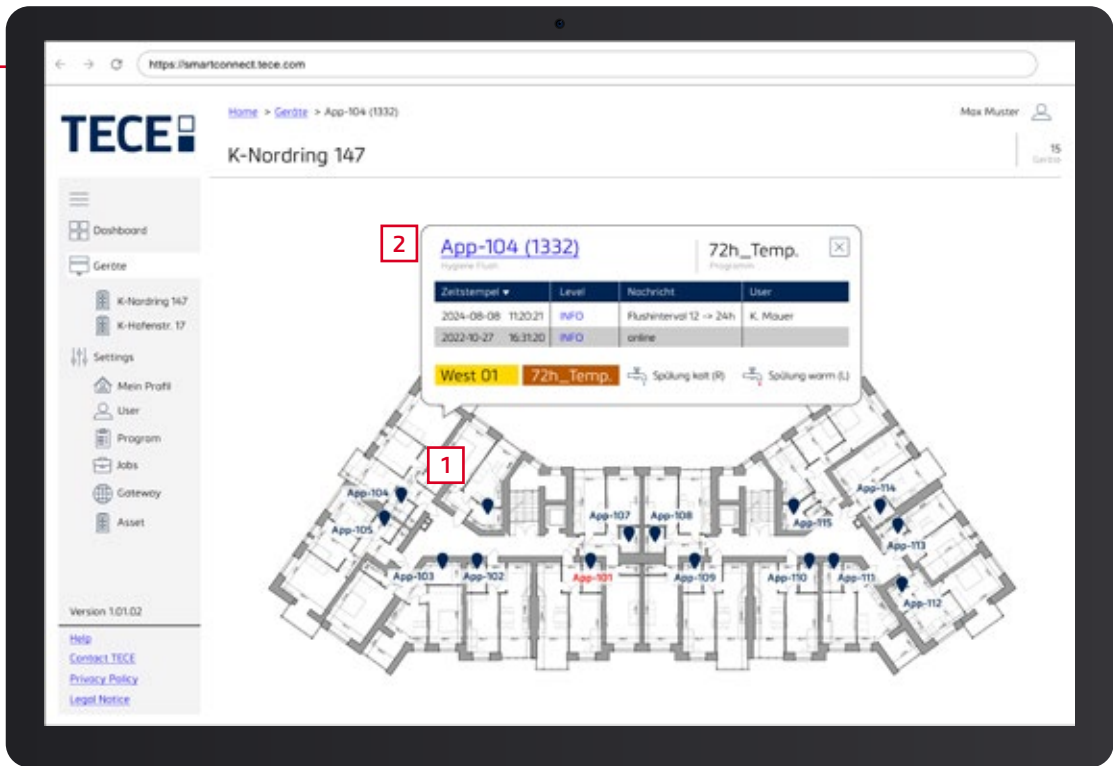
The dashboard at the 'building' level – all in the green area

In addition to the list and status report of all installed appliances in this building, floor plans (1) can also be stored here and various statistics on flushing processes (2) or water consumption (3) can be created.

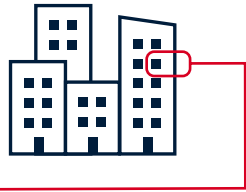
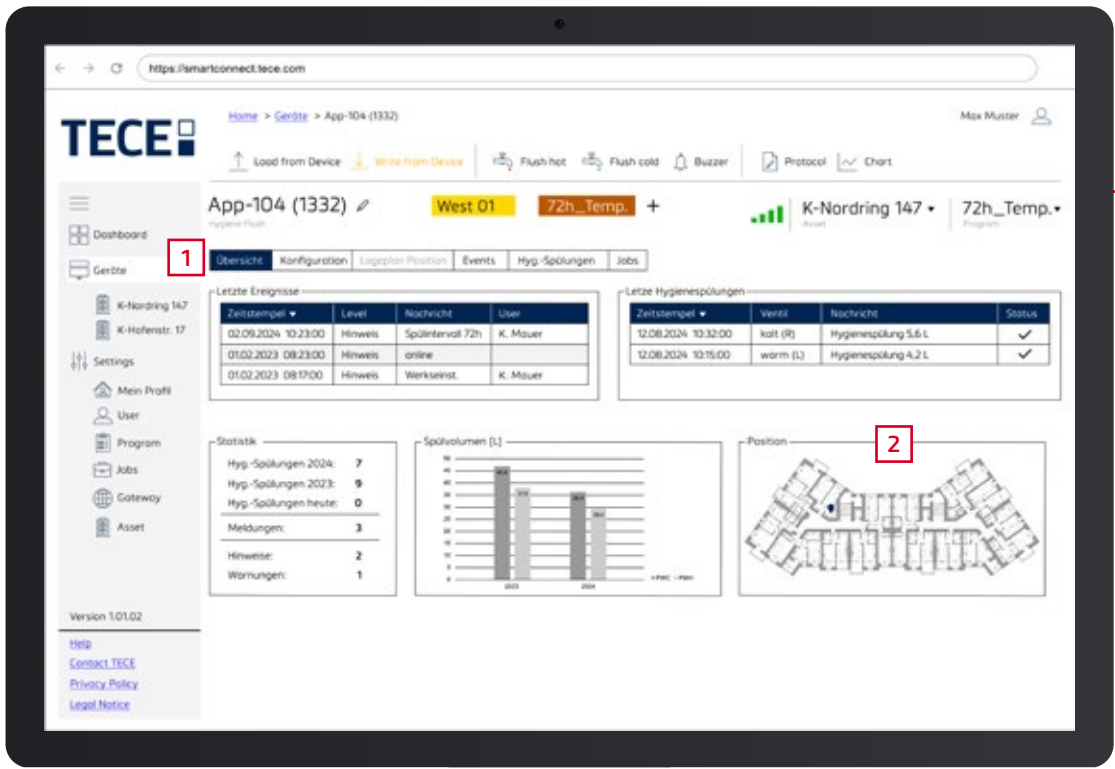


The 'floor plan view' – simply maintain an overview

In the floor plan view, devices can be quickly and easily localised and monitored on site in the event of servicing (1). Fault messages are also displayed in the floor plan view. By clicking on the respective device, the operator receives the most important information in the quick overview (2) and from there can jump directly to the device.



19



The 'device view' – down to the smallest detail

In device view, detailed information and status reports on the individual devices can be called up (1) and the position in the floor plan (2) be viewed.

The IoT upgrade is available from June 2025.

TECE product upgrades

SIMPLY OPTIMISED

Easier, better, more attractive: not everything always has to be rethought. The continuous optimisation of products is part of TECE's DNA. Here are the updates:



Practical: All in one delivery. TECE toilet sets with ceramic and lid in one box.

New TECEone and TECEno sets

SETS MINIMISE THE ORDERING PROCESS

Bringing together what belongs together – A toilet without a lid? Hard to imagine! The set for the TECEone shower toilet consists of the ceramic and an elegant classic lid. The newest member of the TECE shower toilet family – TECEno – is also available as a set combination of ceramic and a stylish slim lid. Both product series (TECEone and TECEno) are available as a set for cold and hot water connection and as a cold water-only version. In addition, customers who do not require a shower function can also order an attractive TECEno toilet set.

This is a real plus for plumbers: not only is the ordering process easier, but the uncomplicated installation also saves valuable time – a double gain in efficiency. Optimum cleaning, simplest operation and focussed on the essentials – this is what the TECEone and TECEno shower toilets stand for.

The new TECEone and TECEno sets will be available from Q2/2025.

RazFaz compact

LIGHTER & FASTER INSTALLATION IN NO TIME AT ALL

With the third generation of the TECEflex RazFaz tool set, TECE is taking the expansion and pressing of axial connections to a new level. The revised design is not only more compact, but also 200 grams lighter than its predecessor. The balanced handling makes work considerably easier for plumbers – a real game changer on the construction site.

Particularly clever: the integrated crimping point lighting ensures precise work, even in poor lighting conditions. Despite the 2 Ah battery, the RazFaz compact offers a battery capacity of up to 280 TECEflex 16mm pressings per battery charge.

The 'Made in Germany' quality tool also boasts a Europe-wide service network of over 90 certified partners. With RazFaz compact, plumbers are well supplied – simply efficient.

The new RazFaz pressing tools are available now.



The new generation of the RazFaz tool (right) is now also available and takes pressing to a new level – efficiently, precisely and reliably.

TECEshowerpoint

POINT DRAINAGE AT THE HIGHEST LEVEL

TECEshowerpoint combines the highest quality and perfect hygiene with the simplest installation and effortless cleaning, as already established with TECEshowerline

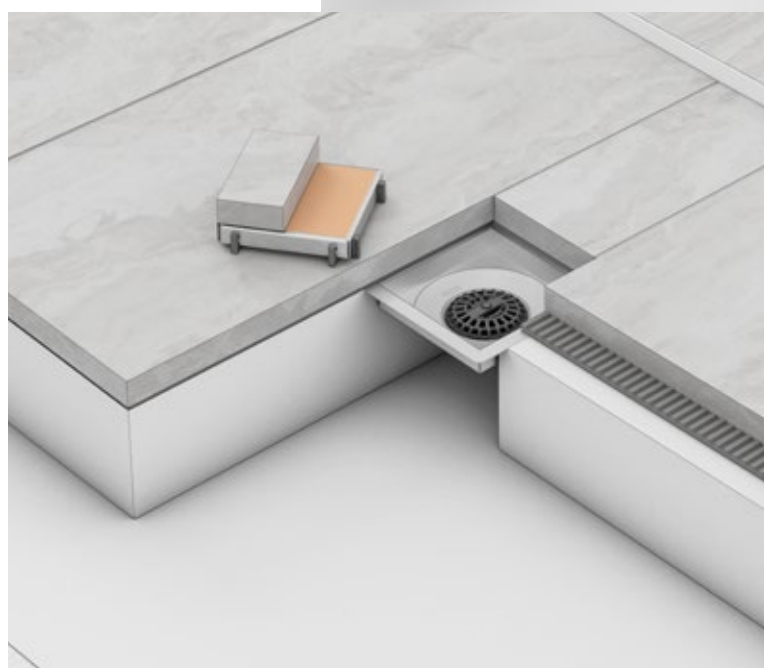
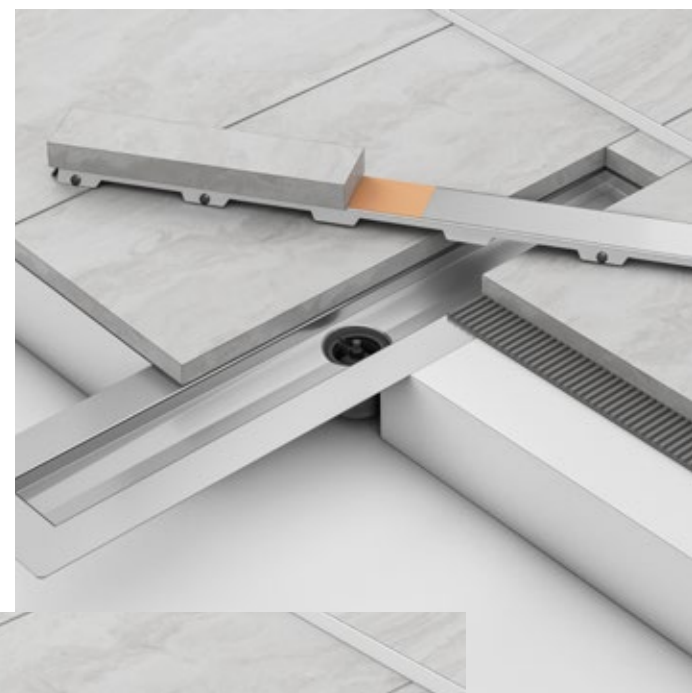
The base body made of stainless steel and the grate of the new TECEshowerpoint are designed for direct connection to vertical drainage pipes and are optionally available in the sizes 100 mm and 150 mm. The internal 3D gradient ensures effective self-cleaning in the point drain. The mechanical odour trap provides additional protection against sewer gases and unwanted vermin.

One set – two designs

TECEshowerpoint is available in a 2-in-1 design cover for the greatest possible design variety: one side in a high-quality stainless steel look, the other as a stylish tileable channel. Alternatively: TECEshowerpoint is also available as a frameless tile base for use with natural stone tiles. Only a narrow gap remains visible with this variant, which collects the waste water from all sides. Minimalist but effective.

All parts at your fingertips

The practical sets for TECEshowerpoint and TECEshowerline contain all the necessary parts.



Shower channels and point drains in a well-thought-out design and highest quality

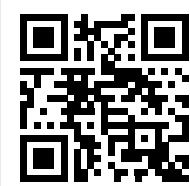


TECElineo shower channel set ALL IN ONE SET

Where there are no rough edges to slow down the flow, everything runs smoothly. Individually shortenable, TECElineo impresses both functionally and aesthetically across the board and adapts effortlessly to any interior design. Reliable, stylish and without compromise.

Featuring self-cleaning effect:

The inner gradient optimises drainage of water and the self-cleaning effect, thereby reducing the amount of cleaning required. It also reliably prevents puddles from forming. A simple cloth is all you need to clean the low-maintenance stainless steel TECElineo.



See here how to install TECElineo



Customisable to the millimetre – exactly adaptable to the dimensions of any shower area from 400 mm up to 1000 mm.



The stylish version – hinged flange of the drain for installation flush with the wall.

TECEsolid flush plates

WITH A LOT OF STYLE AND NOW ALSO WITHOUT STRUCTURE

TECEsolid is one of the most robust toilet flush plates from TECE, and the design is also in a class of its own. The range has currently been expanded and the four textured variants are now also available in the classic, smooth version.

The TECEsolid toilet flush plates in graphite, nickel, bronze and brass – each brushed – were previously only available with linear or diamond structures. The selection is now even more varied, as TECE is introducing versions without a structure in addition to the structured variants. Additionally to the plate itself, the push-button panels for the single and dual flush are now smooth and even. A wider range also offers more scope for design and therefore an optimally harmonised design. The new TECEsolid toilet flush plates without structure also fit skilfully and harmoniously into the desired room design without compromise.

Tough as nails – robust to handle

In public and semi-public sanitary rooms as well as in high-end private bathrooms – TECEsolid enhances the appearance of any environment. However, the toilet flush plates are also tough, as flush plates need to be robust, especially in public areas. Their visual appearance is characterised by the flat structure, the harmoniously rounded edges and the high-quality surface. The plates are of interest for use in the contract sector, but thanks to their visual qualities they also look good in high-end private bathrooms.

Brushed graphite



Brushed nickel



Brushed bronze



Proven modular principle

Thanks to the new surfaces, architects and bathroom planners can now use the popular TECEsolid even more diversely than before for a wide range of bathroom furnishings and perfect them – from function-oriented restaurant toilets to stylish hotel bathrooms and robust family bathrooms. The tried and tested modular principle is also used here: all TECEsolid flush plates fit on all TECE cisterns.

Robust and durable

Thanks to a 2 mm thick stainless steel surface, the TECEsolid flush plates are exceptionally robust and durable – properties that are particularly important in semi-public and public areas.

Very flat

With a depth of just 6 mm, the TECEsolid flush plates lie particularly flat against the wall, giving the bathroom a minimalist and elegant aesthetic. The flat design blends perfectly into the surroundings – without being bulky.



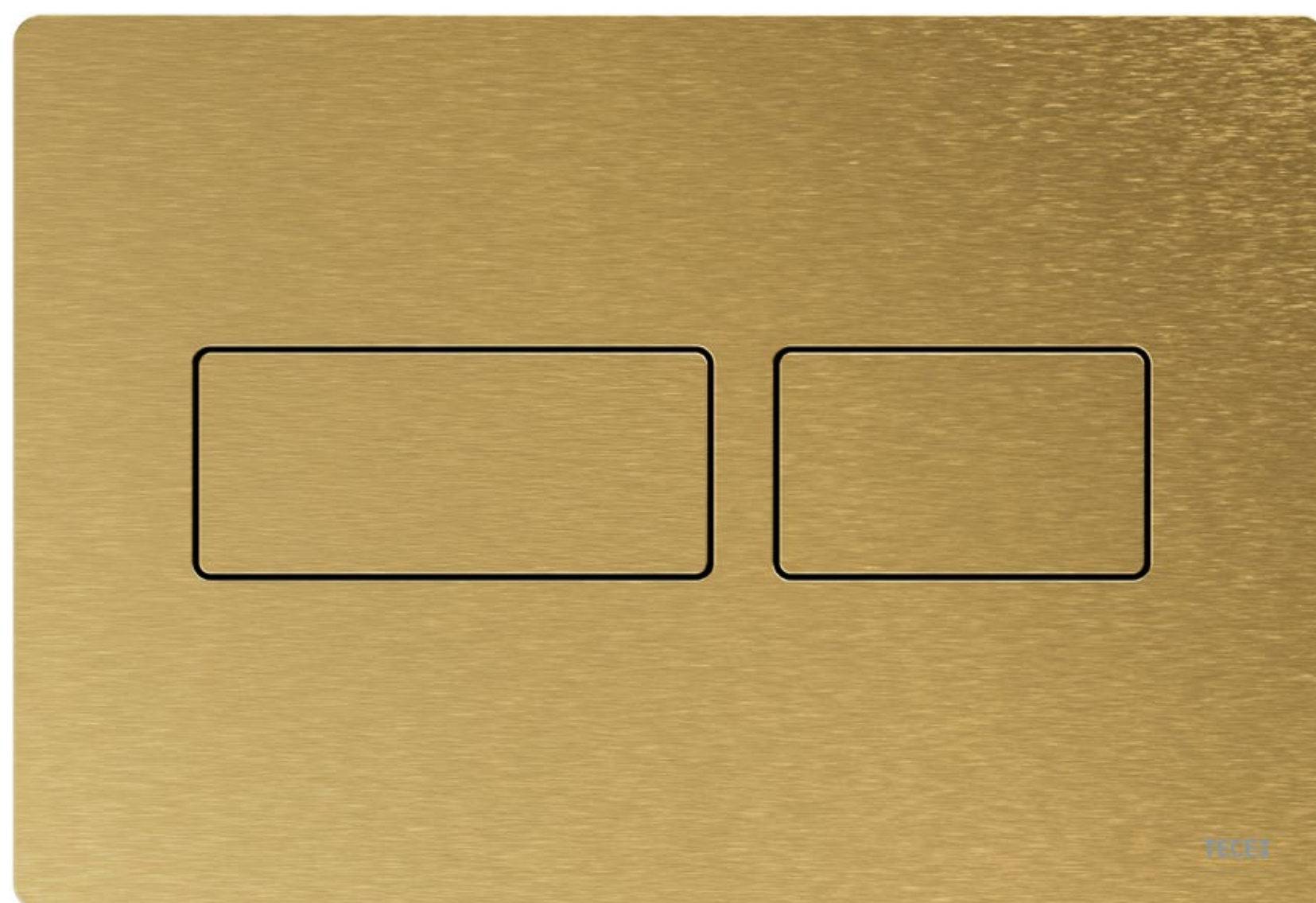
A range of surfaces

Thanks to a wide range of high-quality surfaces and structures from the complete TECEsolid range, the TECEsolid toilet flush plates can be customised and integrated into any design concept – optionally also with an anti-fingerprint coating.

Anti-theft protection

The concealed screw-on installation of the TECEsolid flush plates guarantees reliable protection against theft – a major advantage in public sanitary facilities.

Brushed brass



Happy birthday TECEprofil

30 YEARS OF PRE-WALL TECHNOLOGY WITH SYSTEM

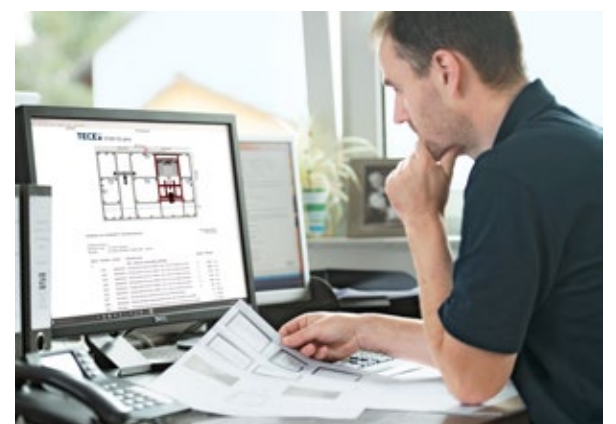
Simply ingenious – ingeniously simple: For 30 years now, TECEprofil has been the universal support structure for every building situation. Combined with fully pre-assembled sanitary modules for all applications, we provide professionals with everything for the pre-wall from a single source.



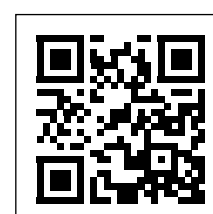
Consisting of just three basic components, the pre-wall system has been offering architects, planners and tradespeople maximum design freedom and flexibility in bathroom design since the mid-1990s. Corner joints, angle brackets, profile pipe – that's it! Clever accessory components make the work even easier, e.g. for particularly difficult tasks under sloping roofs or with unusual floor plans. With TECEprofil, bathrooms could finally be rethought, both in new builds and in renovation projects, in private bathrooms as well as in public areas.

From individual to industrial – always well positioned with TECEprofil

TECEprofil is suitable for any size of property and makes installation easier: whether individually on site, pre-assembled in your own workshop or industrially prefabricated on a large scale (when we refer to TECEsystem). All applications can be easily mastered. With the TECEsmartwall configurator, the installation walls can be planned effortlessly, quickly and, above all, error-free. The programme is simple and intuitive to use. In just a few steps, you can obtain invitations to tender, quotations and a precise calculation. The tool supports the creative ideas of its users and helps to solve difficult tasks.



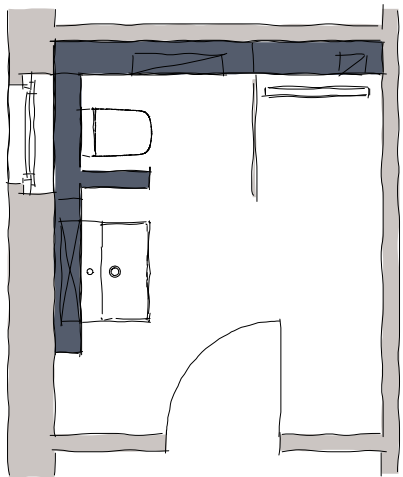
TECEsmartwall supports easily, quickly and reliably. Free of charge and available online at all times.



The clever solution for
your pre-wall planning:
TECEsmartwall



Well equipped for the future and completely different, thanks to pre-wall installation: thanks to TECEprofil, a bathroom with barriers from the 70s becomes an impressive private spa for daily bathroom routines and relaxation.

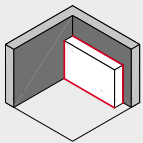


Standard bathrooms become impressive one-offs

Not only do the room-height pre-walls offer space to run the pipes and a functional room layout, niches can also be easily integrated for a mirror cabinet and stylish shelving. The flexible, stable and simple modular system is used worldwide – because technology that remains hidden and does not restrict creativity is internationally popular.

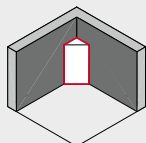
Installers appreciate the ease of installation, and safety naturally also plays a role: the system can withstand static loads and fulfils the normative requirements for drinking water hygiene, sound insulation and fire protection. Sanitary wall heights of up to 4500 mm are possible, as well as mounting in front of a solid or dry-wall – or completely free-standing. Large installation spacings of up to 1200 mm are also no problem.

Standard wall



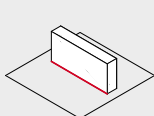
Standard wall, partial and room-height with or without side attachment
Height: standard 1150 mm, max. 4500 mm
Depth: min. 115 mm, max. 500 mm
Width: unlimited

Special wall

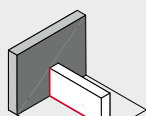


Corner structure 45°, partial and room-height in one corner of the building
Height: max. 4500 mm
Depth: min. 350 mm
Width: min. leg length 495 mm

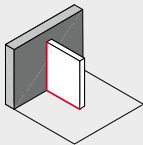
Free-standing wall



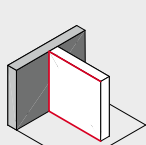
Free-standing, partial height sanitary wall
Height: standard 1150 mm, max. 2100 mm
Depth: min. 210 mm
Width: max. 2400 mm



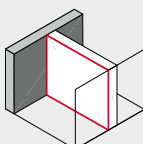
Partial-height sanitary wall
Height: standard 1150 mm, max. 2100 mm
Depth: min. 210 mm
Width: max. 2400 mm



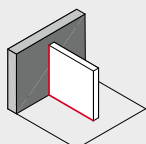
Partial-height privacy wall (only approved for fitting installations)
Height: max. 2100 mm
Depth: min. 170 mm
Width: max. 1200 mm



Room-height sanitary wall
Height: max. 4500 mm
Depth: min. 210 mm
Width: max. 2400 mm



Room partition wall
Height: max. 4500 mm
Depth: min. 170 mm
Width: a vertical strut is required every 2400 mm on all sides of the wall



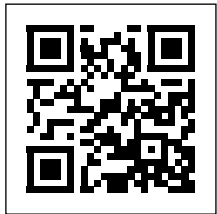
NEW: narrow partition wall without any installations
Height: max. 2000 mm
Depth: min. 69 mm
Width: max. 1400 mm

— Mounting level on the building structure

When planning and realising your design, please note the assembly guidelines in our Technical Information.



The finished installation wall is brought to the construction site; with the necessary mounting materials, of course.



Make it simple, design it flexibly: with TECEprofil

References

ALWAYS WELL ADVISED WITH TECE

From Münster to Oslo, from Krakow to Athens – high-quality sanitary technology from TECE is in use all over the world. Whether in the luxury segment or in environmentally conscious projects that focus equally on sustainability and comfort: TECE products stand for the highest quality and customised solutions that meet individual requirements and at the same time exceed international standards. Simply reliable with TECE.

New life for the old Hill-Speicher – get to know system construction

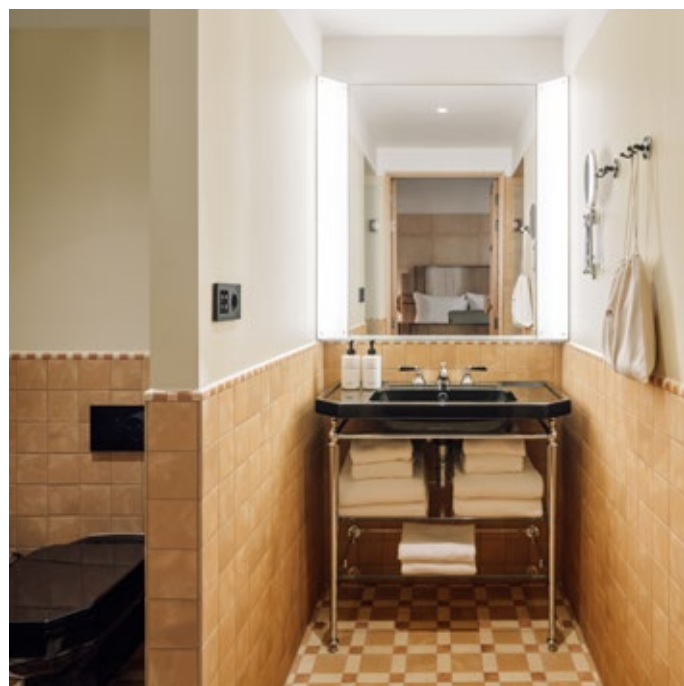
When it comes to sustainable construction, there is no way around serial prefabrication and modular solutions – even in renovation projects such as the Hill-Speicher at Münster harbour. The interior of this traditional building has been completely restructured and now shines in new splendour. In October 2023, the Münster 1882 Rowing Club (RVM) and its 500 members moved into their new home with a boat hall and jetty. On the upper floor, a socio-cultural neighbourhood centre with event and meeting rooms and plenty of space for creative people has been built on 2500 square metres. The open association B-Side Kultur e.V., which is also based here, develops and organises non-profit project modules. Last, but not least: The roof is also being renovated.

The particular challenge in this refurbishment was to carry out the installation on partially existing steel girder beams, as these had to be drilled through. As TECEprofil and TECE toilet flush plates were already installed in all public sanitary rooms at the Hill-Speicher, the company offered to use some sample walls from the TECEsystem range for the ground floor. This convenient option was presented to the building owner, the planner and the specialised tradesmen working on the project.



© Matthias Ibeler

Sommerro Hotel Oslo – where history comes to life



© Francisco Nogueira



Welcome to the Sommerro Hotel Oslo: An architectural masterpiece in the heart of the vibrant Frogner neighbourhood. In addition to a large number of carefully selected TECE toilet flush plates, which were installed in the Sommerro, the TECEloop toilet flush plate in black glass sets high-quality accents in the orange tiled bathrooms. The TECEprofil toilet modules installed are optimally matched to the country-specific features of the technical design.

The reason: The wooden construction method commonly used in Scandinavian countries requires a high level of protection against moisture damage, which can be caused by frost damage, for example. With conventional toilet modules, sensitive timber constructions have to be protected by an elaborate seal in front of and behind the cistern. Thanks to the safetybag, only one sealing layer is required in front of the wall – there is no need to install a complex watertight barrier behind the module.



© Ionnīs Athymarītīs

Stradom House – the magic of history and modern elegance

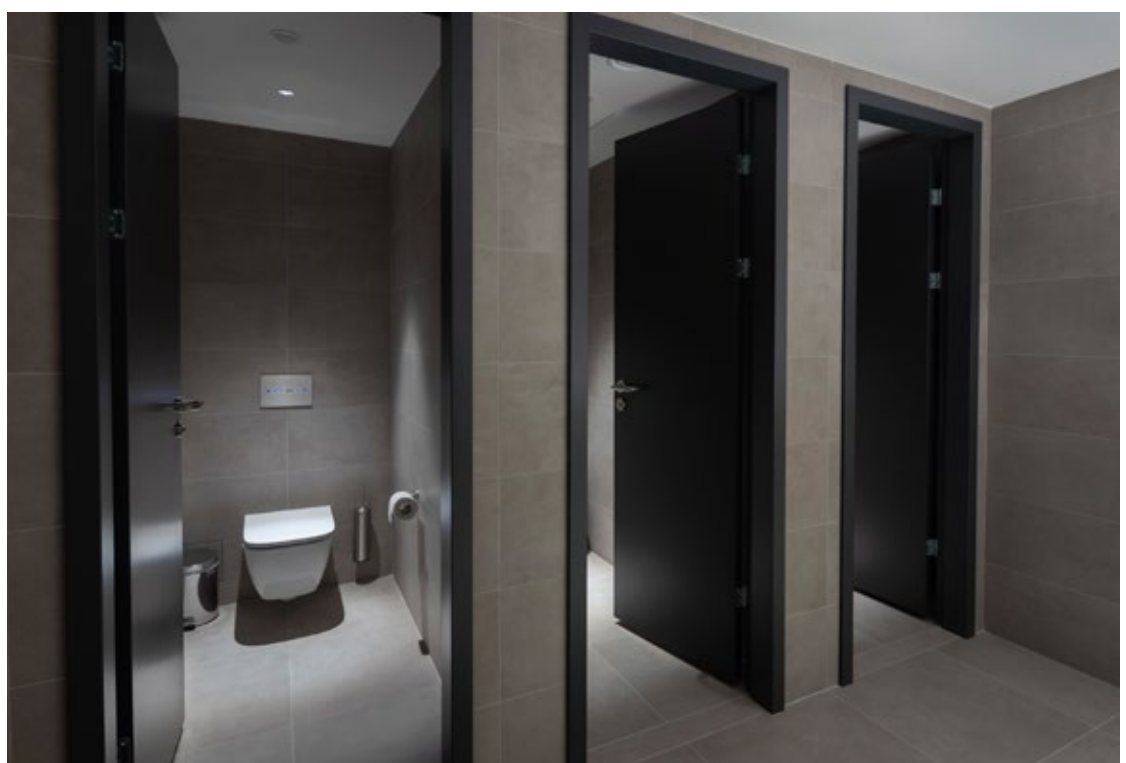
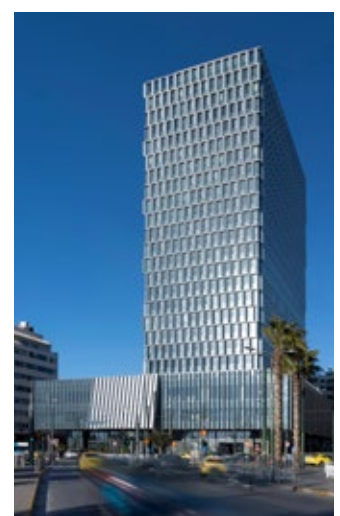
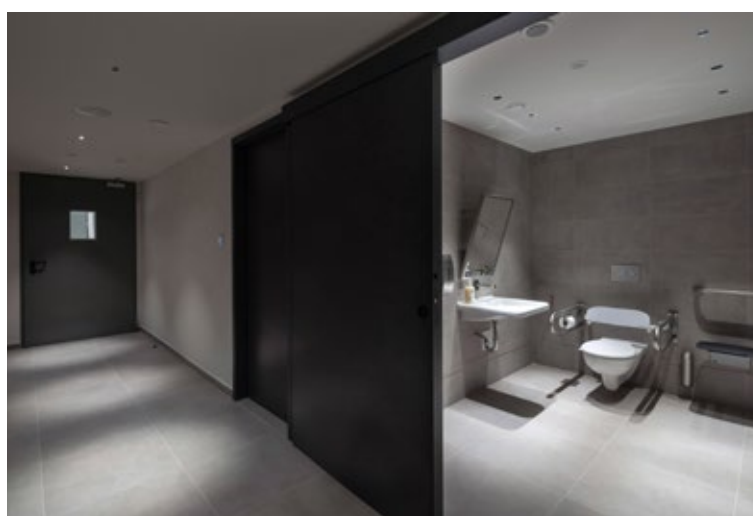
Krakow, also known as the ‘secret capital’ of Poland, is a city full of stories, myths and cultural contrasts. The Stradom House Autograph Collection by Marriott is located in the centre of this historic city of kings. The high quality awareness of the hotel owners is evident in every detail, including the installed sanitary technology. In the public toilet facilities, the touch-free TECEsolid toilet electronics in polished white blend in with the modern aesthetics of the bathrooms.

The built-in sensor precisely detects user actions, completely preventing unintentional flushing. In addition to this modern technology, the hotel also uses tried-and-tested manual TECEsolid toilet flush plates in the guest bathrooms. The toilet flush plates from the TECEsquare metal series in matt black and the TECEfilo urinal flush plate were also installed. The installed TECEprofil toilet modules not only impress with their quick and easy installation, but also ensure particularly quiet filling of the cistern thanks to the low-noise filling valve. In the showers, the TECEdrainprofile shower channels with clever features ensure smooth shower drainage.

Piraeus Tower Greek – the Ghost Tower comes to life

Located at the largest passenger port in Europe and just a few kilometres from Athens, the imposing Piraeus Tower looms large. Certified as the first ‘green’ skyscraper in Greece, great importance was attached to environmentally friendly methods during the redesign – this also includes the sanitary technology: The touch-free TECEsolid toilet electronics in brushed stainless steel were installed in the public sanitary areas.

The integrated sensor precisely recognises the touch-free activation of the dual-flush technology and reliably distinguishes between user interactions and other processes – unintentional flushing is reduced. In addition, the integrated hygiene/interval flush programme ensures regular water exchange in the drinking water installation. Also installed in the tower: TECEprofil toilet module with Octa II cistern. With an extremely shallow installation depth of 8 cm, the Octa II cistern is a real problem solver for challenging space conditions, such as in the Piraeus Tower.



© Nikos Daniilidis

Saving the best for last:

GERMAN DESIGN AWARD FOR TECEneo



With its TECEneo shower toilet, TECE has been honoured with the German Design Award 2025, voted winner in the “Excellent Product Design – Bath and Wellness” category for outstanding design quality.

Every year since 2012, the German Design Council has honoured outstanding products, projects and personalities that are ground-breaking in the international design landscape. The ‘winner’ award recognises particularly successful design solutions that stand out for their quality and creativity. This year, the TECEneo shower toilet prevailed in a competitive field of the highest calibre, proving that it is one of the best in its class. The result is the award of the prestigious German Design Award 2025, voted winner in the “Excellent Product Design – Bath and Wellness” category for outstanding design quality.

The jury’s reasoning: TECEneo combines a clear design language with technical precision and sets new standards in its category. Sophisticated functionality meets a timeless design that not only impresses with its elegance, but also offers ideal suitability for everyday use.

This award motivates us to continue developing products that are closely aligned to the needs of our customers in line with our claim ‘close to you’ so that we can continue to impress and inspire people.

TECE GmbH
International Business
T +49 2572 928-999
international-business@tece.de
www.tece.com/en

TECE 
close to you

The appearance and surface finish may vary depending on the material and production process and the lighting conditions. In order to improve the flow of reading, no distinction is made between feminine, masculine and non-binary in gender-related expressions. However, all genders are always implied.