

SolarEast

Air Source Heat Pump

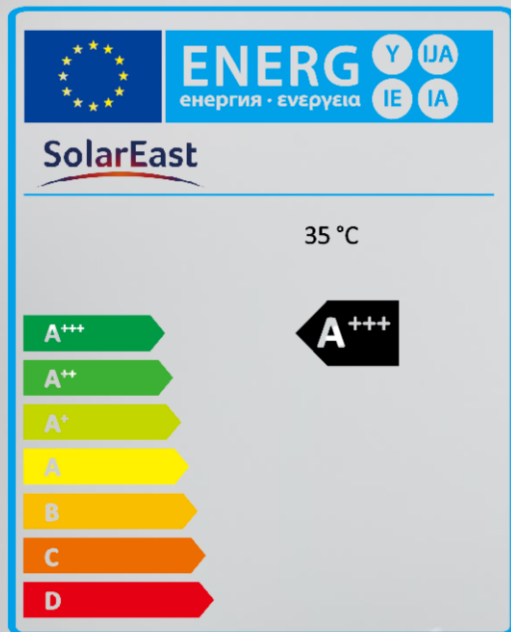
Make the world cleaner, make the life better



Heating & Cooling & DHW
R290 DC Inverter Heat Pump



OVERVIEW

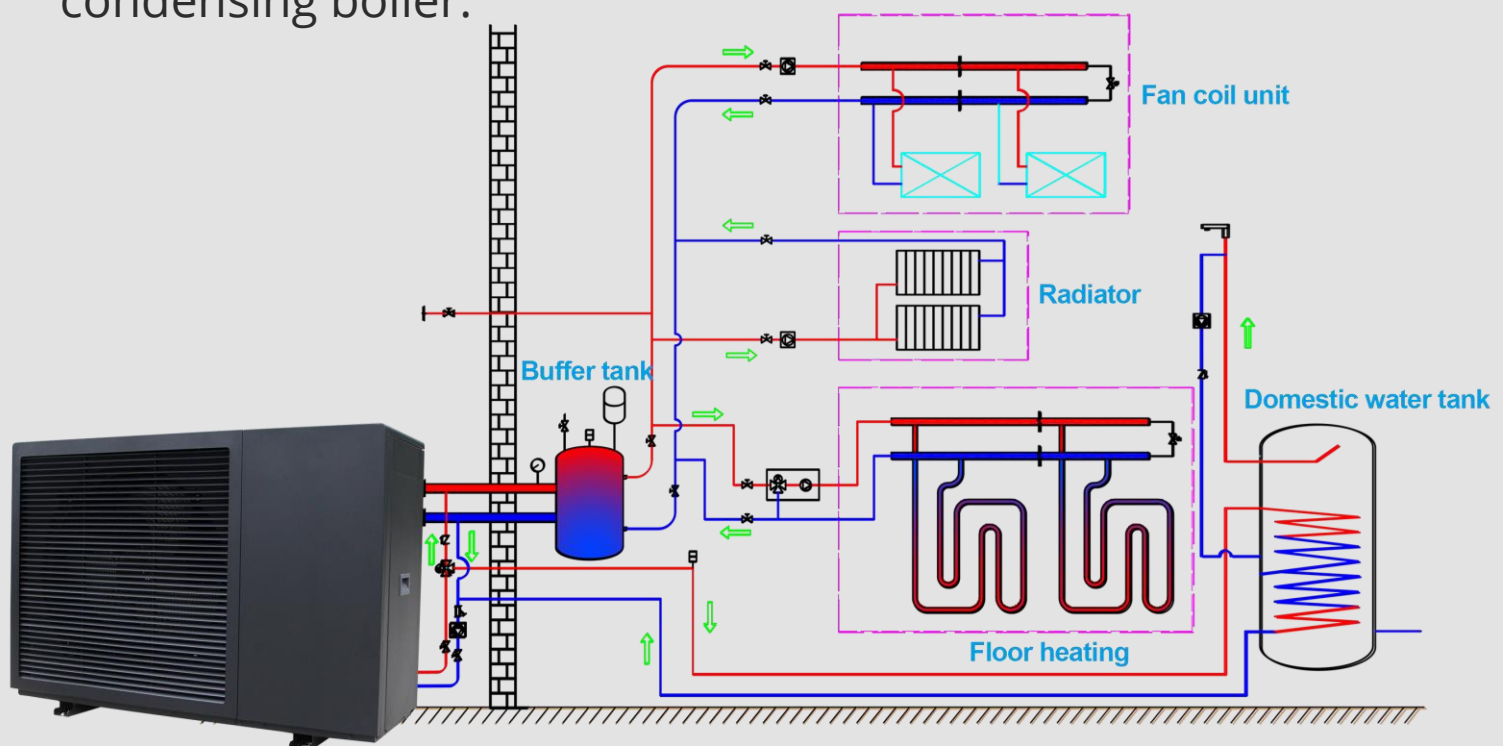


Solareast R290 Monoblock DC Inverter Heat Pump is the newest air source heat pump that reaches A+++ energy efficiency. It's integrated with heating, Cooling, and DHW function. Several detailed features are also available and will be introduced later.



Heat pump: a renewable energy source

Whether heating or cooling, Solareast is ready for you!
The new Solareast monoblock air source heat pump makes modernizing a heating system as easy as replacing a gas-condensing boiler.





Safe **R290** refrigerant

The new heat pumps in the R290 S thermal series use the "green" refrigerant R290 (refrigerant), which is considered particularly environmentally responsible with its very low GWP (global warming potential) .

Advantages of Solareast heat pumps



INTELLIGENT
DEFROST



INVERTER
TECHNOLOGY



CLIMATE PROTECT
THE GREEN
REFIRGERANT R290



TOUCH CONTROL
LED DISPLAY

HIGH ENERGY EFFICIENCY

LARGE HEAT CAPACITY

**ENVIRONMENTALLY
FRIENDLY**

ODP=0
neutral for
the ozone
layer

GWP=3
low impact
on global
warming

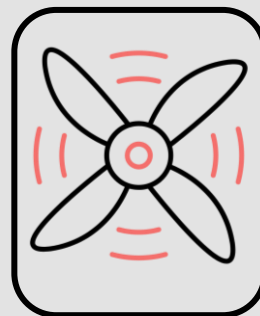
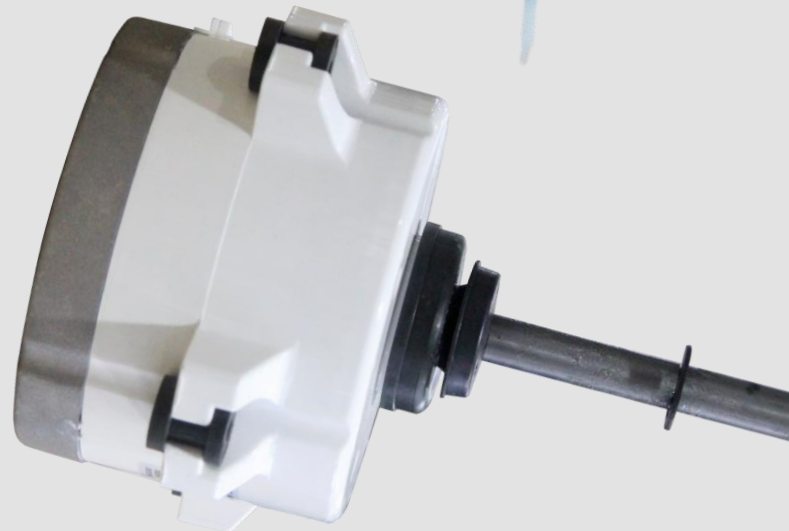
Full DC Inverter Technology

With this technology, users can enjoy a maximum level of comfort at the lowest costs. Monoblock heat pump in the market is to save space and money. For sure, the R290 Full DC Inverter heat pump will be the future trend.



DC INVERTER COMPRESSOR

In contrast to **AC drive technology**, DC inverter speed technology often regulates compressor control process more accurately, increasing transmission efficiency and lowering compressor noise and energy consumption.



DC INVERTER FAN MOTOR

DC fan motor control enables super-quiet fan operation and minimizes power consumption.



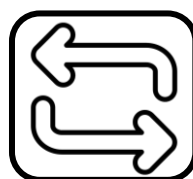
WATER PUMP

The built-in water pump connects to the water inlet of the machine to make water flow in the pipe.

High efficiency

Plate heat exchanger

Heat exchange is carried out through the plates, which has the advantage of high heat exchange efficiency.



ELECTRONIC EXPANSION VALVE

In order to maintain the stability of the refrigeration the system, an electronic valve can quickly alter the flow of refrigerant.



Modern technologies



SOUNDPROOF

The cabinet's whole exterior is completely soundproofed. Sponge substance that is effective in absorbing and muting the compressor's operating noise.



Ultra silent

Single fan structure for big capacity with lower noise.

ELEGANT

Black and White Sheet Metal Design

Stylish and innovative
cabinetry design.
Blends in with the local
architecture.

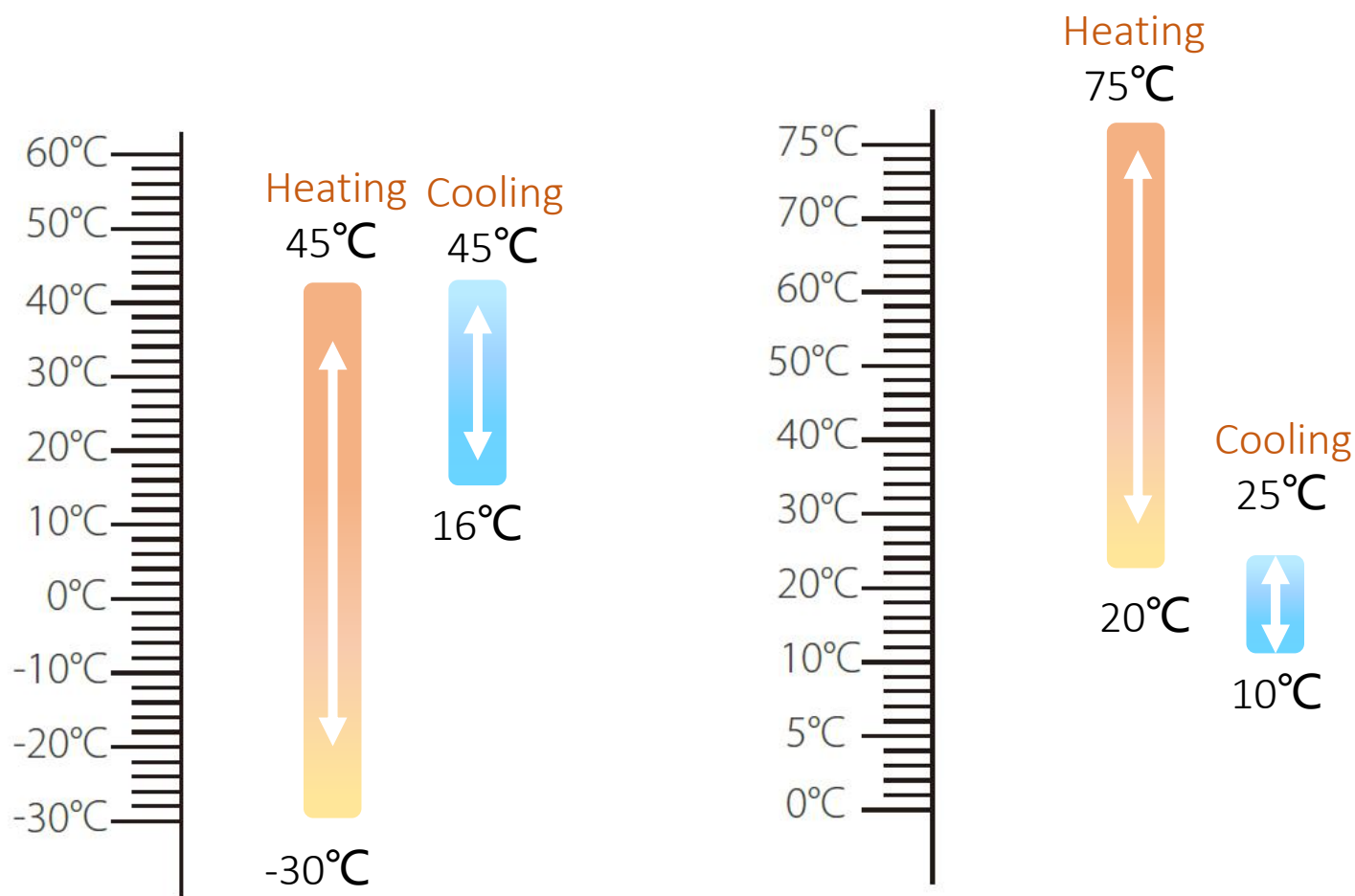


EVERYTHING In one APP

Everything in one app



Wide **ambient temp.** & **water temp.** operation ranges



Ambient temperature
operation range

Water temperature
operation range

TECHNICAL SPECIFICATION



Model:			BLN-006TC1	BLN-012TC1	BLN-012TC3	BLN-018TC1	BLN-018TC3
Power Supply		V/Ph/Hz	220~240/1/50	220~240/1/50	380~415/3/50	220~240/1/50	380~415/3/50
Nominal Heating (Max) (A7/6°C,W30/35°C)	Heating Capacity	kW	3.0~9.1	5.5~15.1	5.5~15.1	7.5~22.1	7.5~22.1
	Power Input	kW	0.65~2.29	1.08~3.9	1.08~3.9	1.5~6.8	1.5~6.8
	Current Input	A	2.8~9.1	4.5~17.0	1.8~6.9	6.9~31.1	2.7~12.3
Nominal Heating (Max) (A7/6°C,W47/55°C)	Heating Capacity	kW	2.85~8.50	5.0~13	5.0~13	7.0~18.9	7.0~18.9
	Power Input	kW	0.95~2.85	1.75~4.96	1.75~4.96	2.15~7.35	2.15~7.35
	Current Input	A	2.9~9.2	4.6~17.1	1.9~7.0	7.0~31.3	2.8~12.4
Nominal Cooling (Max) (A35/24°C,W12/7°C)	Cooling Capacity	kW	1.25~5.8	3.65~10.2	3.65~10.2	4.5~17.7	4.5~17.7
	Power Input	kW	0.65~2.35	1.12~4.16	1.12~4.16	1.80~7.30	1.80~7.30
	Current Input	A	2.9~10.4	4.8~17.3	2.0~7.8	7.8~32.4	3.3~12.9
ERP Level (Outlet water temp. at 35°C)		/	A+++	A+++	A+++	A+++	A+++
MAX. input power		kW	3.00	5.50	5.50	7.50	9.00
MAX. input current		A	13.50	24.50	10.50	35.00	16.00
Refrigerant / Weight		/	R290	R290	R290	R290	R290
Rated water flow		m³/h	1.00	1.80	1.80	3.00	3.00
Fan quantity		/	1	1	1	2	2
Fan motor type		/	DC inverter				
Compressor		/	DC inverter				
Circulating pump		/	Inverter type / Built-in				
IP Class		/	IPX4				
Sound pressure at 1m distance		dB(A)	42	44	44	48	48
Max outlet water temperature		° C	75	75	75	75	75
Water piping connections		/	DN 25 (1")	DN 25 (1")	DN 25 (1")	DN 32 (1-1/4")	DN 32 (1-1/4")
Water Pressure drop(max)		kPa	20	25	25	35	35
Operating temperature range (Heating mode)		° C	-30~45				
Operating temperature range (Cooing mode)		° C	16~45				
Unpacked Dimensions (L×D×H)		mm	1150×410×800	1285×455×930	1285×455×930	1285×455×1350	1285×455×1350
Packed Dimensions (L×D×H)		mm	1300×485×950	1450×530×1050	1450×530×1050	1450×530×1450	1450×530×1450
UnPacked Weight		kg	90	110	110	145	145
Packed Weight		kg	115	125	125	160	160



SolarEast

<https://www.solareastheatpump.com/>