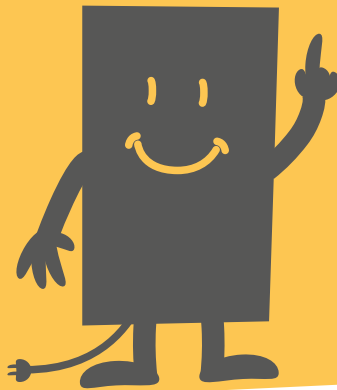


Catalog 2022

Efficient
heating!



heatness®

The best heating for your rooms!



Wall mounted heating system

Heating systems

Now all your rooms will be warm.
In only 4 steps you can choose
the required amount of
heaters and the suitable
thermostats.



*Ceiling mounted
heating system*

Efficient heating

Select one of our
economical heaters.

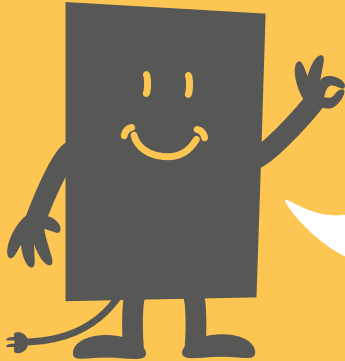
Simply set your
comfortable temperature
and enjoy the pleasant
warmth of our mobile infrared
heaters.



*Free standing
mobile heating system*

arm!
se

Your advantages



- **Extremely power saving**
- **Quality from Austria**
(directly from the manufacturer)
- **Easy assembly** and installation
- **Comfortable operation** due to user-friendly thermostats
- **Maintenance-free** and efficient in operation
- Space-saving and **flexible use**
- **Comfortable, healthy room climate** due to less convection

No other heating system is more energy efficient and easier to use than a heatness® infrared heating system.

Heating systems

- Wall and ceiling mounting possible
- Each room individually controllable
- Many designs - suitable for the respective living space
- Simply plug in and feel good!

Ceiling mounting

&

Wall mounting



4 steps to your heating system

1

DETERMINE SIZE



2

DETERMINE POSITION

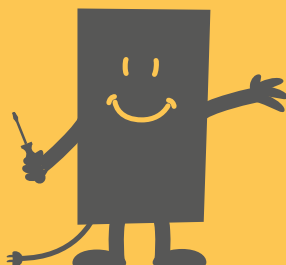


 **heatness**®



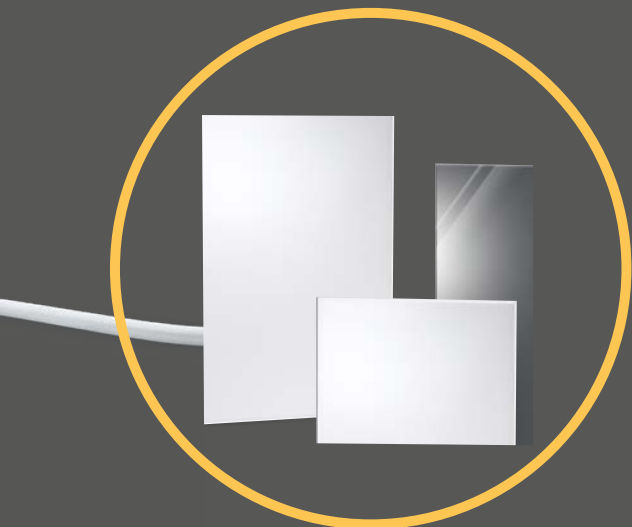
Rudi's tip:

Heat your rooms easily -
save a lot of electricity costs!



3

SELECT PRODUCT LINE

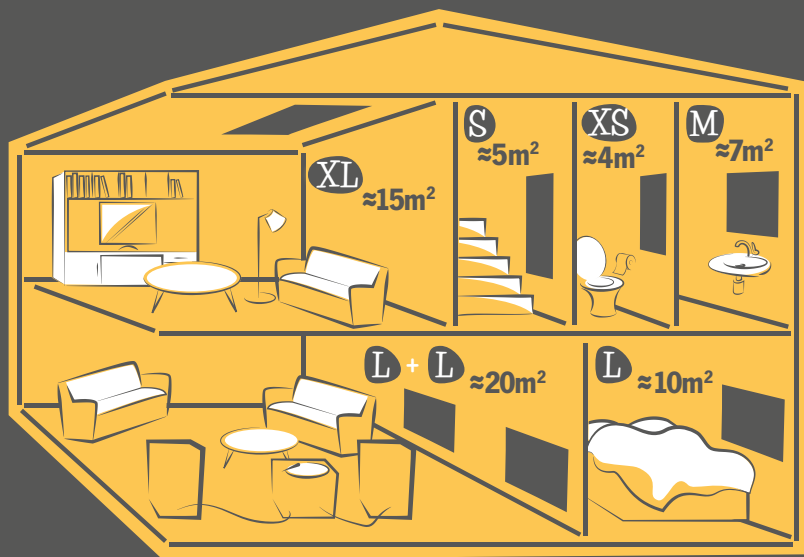


4

CHOOSE THERMOSTAT



1. Determine size

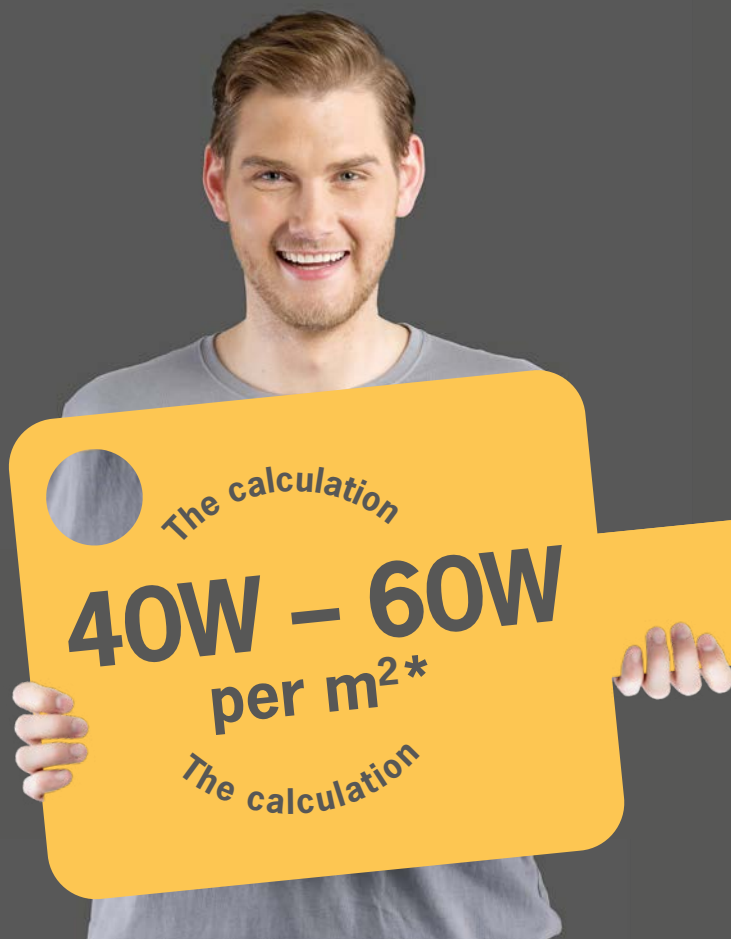
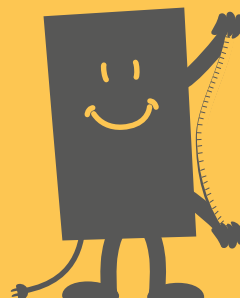


Rudi's tip:

Comparable to the horsepower of a car, the more power the higher the comfort of heatness® heaters.

As a result, the heating system reaches the desired temperature much faster.

So if in doubt, round up.



* This calculation is based on an insulated room with 2.5m ceiling height.



(700–800W)

.....

~15m²
60×120cm



(500–600W)

.....

~10m²
60×90cm



(350–400W)

.....

~7m²
60×60cm



(400W)

.....

~5m²
30×120cm



(300W)

.....

~4m²
30×90cm

2. Determine position

Where to place the heaters?

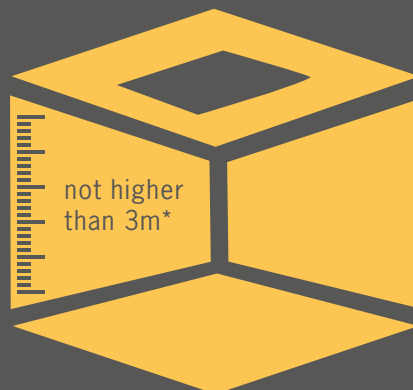
Infrared heaters should be placed similarly to lamps. The area which is directly affected by infrared waves, warms up very quickly. This warmth gradually spreads throughout the room.

Placement options for every need:

Wall mounting



Ceiling mounting



* For room heights above 3m, we recommend suspending the ceiling heaters slightly from the ceiling using our ceiling mounting kit C-02.

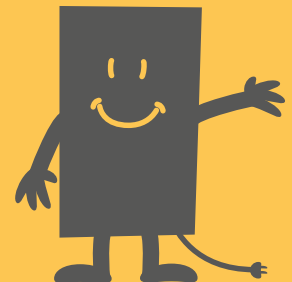
Rudi's tip:

Generally, the heaters should be mounted in areas which are most frequented in the room.

The heaters should be directed into the room.

Opposite of windows is not an ideal position - heat energy is lost.

The heaters should not be blocked by e.g. furniture. The infrared heat waves should reach as many objects as possible.



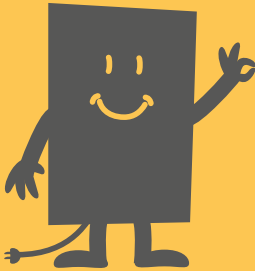
heatness® spreads warmth in the room like a lamp spreads light.



3. Select product line

Rudi's tip:

With our special ceramic coated surface we achieve optimal heat radiation.



Heaters for every style

With our heatness® infrared heaters you can choose from 6 different surfaces.

Depending on the interior style, the heaters blend discreetly with the background or they set an accent enhancing any living space.

Surfaces styles:

Glass Ceramic



White Glass



Black Glass





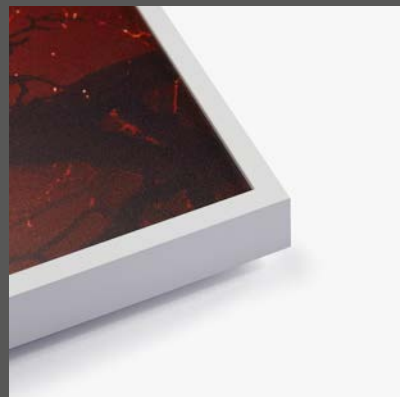
Mirror



Simple PRO



Simple Picture (series)



The Fine Series: Glass Ceramic

Our special ceramic surface provides the best heat conduction, ensuring optimal heat radiation.

The efficiency is 4% higher compared to our simple series.



**Glass
Ceramic**
800W
60×120cm
VCIR-800-P-K

XL

**Glass
Ceramic**
400W
60×60cm
VCIR-400-P-K

M

**Glass
Ceramic**
600W
60×90cm
VCIR-600-P-K

L

The Fine Series: Mirror

The mirror heater with its simple elegance enhances especially the bathroom, the bedroom and the entrance area, providing pleasant warmth.



Mirror

800W

60×120cm

VCIR-800-P-M

XL

Mirror

400W

60×60cm

VCIR-400-P-M

M

Mirror

600W

60×90cm

VCIR-600-P-M

L

The Fine Series: Black or White glass

Our high quality glass heaters add elegance to any room.

Towel Rail

Suitable for all XL, L and M wall mounted models



**Glass
Black or
White**

XL

800W
60×120cm

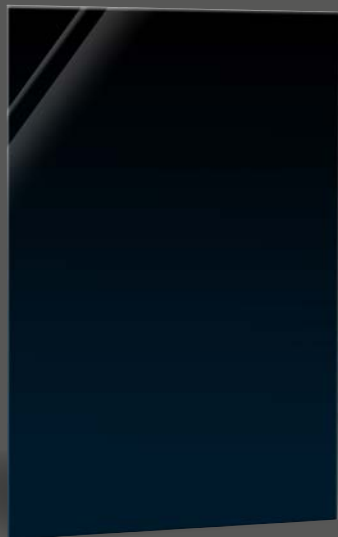
VCIR-800-P-B
VCIR-800-P-W

**Glass
Black or
White**

M

400W
60×60cm

VCIR-400-P-B
VCIR-400-P-W



**Glass
Black or
White**

L

600W
60×90cm

VCIR-600-P-B
VCIR-600-P-W

The Simple Series: Picture



Customise your heater with a picture print.
Choose from a variety of motives from
our catalog or take your own motives.

Picture 300W

30×90cm

VCIR-300-M

XS

Picture 400W

30×120cm

VCIR-400-LM

S

Picture

700W

60×120cm

VCIR-700-M

XL

Picture

500W

60×90cm

VCIR-500-M

L

Picture

350W

60×60cm

VCIR-350-M

M

The Simple Series: Wall mounted



This infrared heater blends seamlessly into any environment with its unobtrusive but classic design.

Simple Wall 300W
30×90cm
VCIR-300

XS

Simple Wall 400W
30×120cm
VCIR-400-L

S

Simple Wall
700W
60×120cm
VCIR-700

XL

Simple Wall
500W
60×90cm
VCIR-500

L

Simple Wall
350W
60×60cm
VCIR-350

M

The Simple Series: Ceiling mounted

The ceiling mounted heatness® heater ensures optimum heat distribution in the room.

Mounting set for **direct ceiling mounting**

C-01



Mounting set for **suspended ceiling mounting**



C-02

A mounting kit is included. Please specify the type of mounting when ordering.

Simple Ceiling

XL

700W
60×120cm
VCIR-700-C

Simple Ceiling

L

500W
60×90cm
VCIR-500-C

Simple Ceiling

M

350W
60×60cm
VCIR-350-C

4. Choose thermostat

Simply heat
and save money

18°

Beo

**Regulate your heating as you wish -
directly at the socket or on your smartphone**

heatness® infrared heaters can be controlled as follows:

- **Simple** control in the room wireless
- **Smart** remote control via smartphone
- **Classic** control hard wired

All heatness® infrared heaters are supplied with plug by default.
The plug can be retained or removed depending on whether the devices
are connected via the socket or are hard wired.



Smart control thermostat
(Bluetooth-capable)



Smart control thermostat
(WLAN-capable)



Hard wired
thermostat



Simple

Temperature control



Remote control



Time control



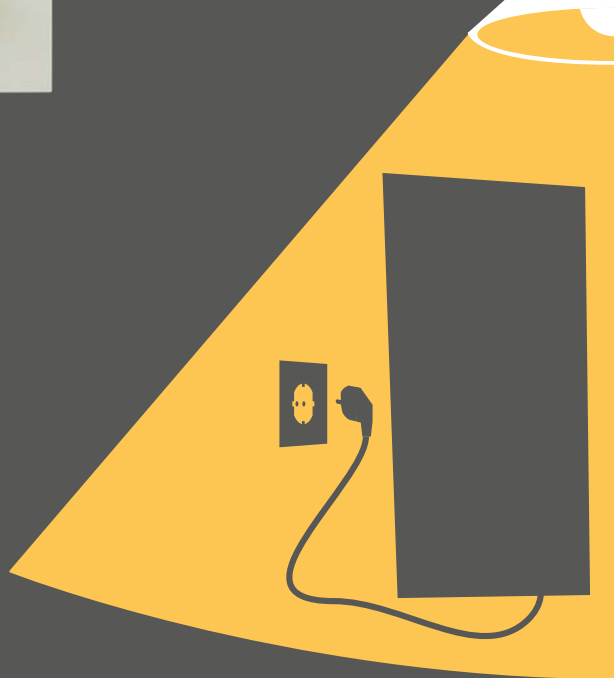
Smart control bluetooth

ON/OFF, temperature adjustable by remote control (DEUS TH07), control of up to 4 switchbox-receivers (MARIA Box RL07-B), MARIA Box is very easy to install (plug-in connection), with Smartphone App via Bluetooth® connection programmable on place.


DEUS TH07



MARIA RL07-B



Hard wired

Temperature control 

Time control 

Thermostat in-wall wired

ON/OFF, temperature adjustable on the device, programmable.

Infrared heaters can also be controlled invisibly with in-wall cables.

For this purpose, the heater is wired with a hard wired thermostat.

TH40



As easy to install as
a ceiling lamp.



Smart Home Smart control WLAN

Temperature control



Remote control



Time control



With the Homematic IP heating control, your infrared heaters can be conveniently adjusted remotely. The room temperature can be controlled via a wall thermostat using the app or voice assistants such as

Hard-wired (in-wall)

HMIP-HAP



HMIP-WTH-2



HMIP-FSM16



Amazon Alexa or Google Assistant. It is also possible to set individual heating profiles with the Homematic App. This gives you the opportunity to set your comfort temperature from everywhere. Whether you're on the couch, in the kitchen or even on the go.

Via the socket

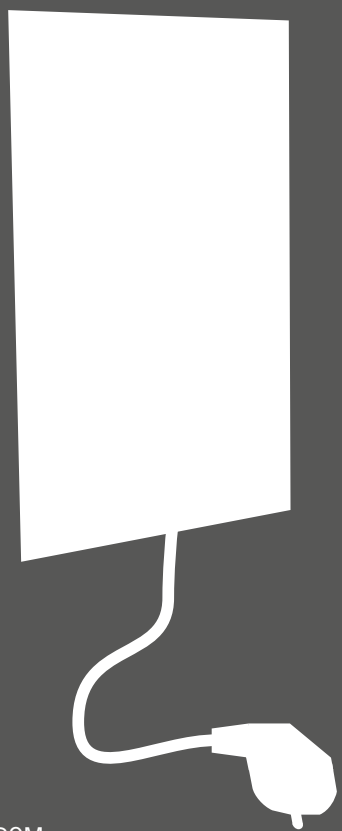
HMIP-HAP



HMIP-WTH-2



HMIP-PSM



Mobile heaters

Enjoy warmth everywhere

The mobile heaters from heatness® can be placed anywhere you want to have it comfortably warm.

These heaters are available in 3 sizes with practical feet. With the DEUS thermostat, you can easily set your comfortable temperature and enjoy the pleasant warmth of our infrared heaters.

**Set up,
plug in and
start heating!**



The Simple Series: Mobile



This heaters provide cozy warmth wherever you wish.

They are suitable for both wall mounting and free standing (feet and wall mounting included).

**Simple
Mobile**

XL

800W
60×120cm
VCIR-800-S

**Simple
Mobile**

L

600W
60×90cm
VCIR-600-S

**Simple
Mobile**

M

400W
60×60cm
VCIR-400-S

Socket thermostats

Our heatness® infrared heaters can be easily controlled with thermostats via an ordinary household socket.

Plug in the adapter and heater and control the temperature wirelessly.

Temperature control



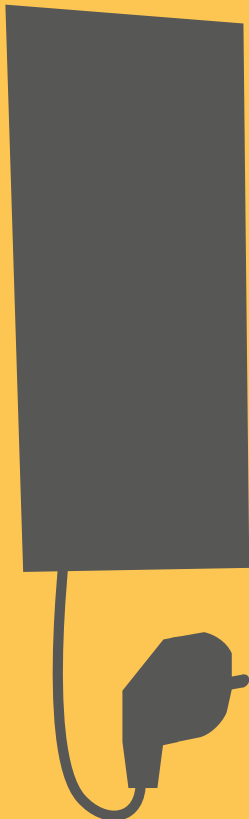
Remote control



Time control



Wireless thermostat plug



TH07



RL07-A



Temperature control



Thermostat plug

TCU



ON/OFF, temperature adjustable on the device.



Example photo: Model Fine Series Mirror XL

Apart from heat pumps,
infrared heaters are the only
heating system with which you
can heat 100% ecologically.



**Environmentally
friendly heating
with Infrared!**

- Resource saving
- Fine dust free
- CO₂ neutral

Developed in Austria

heatness® infrared heaters a proudly developed
Austrian quality product.

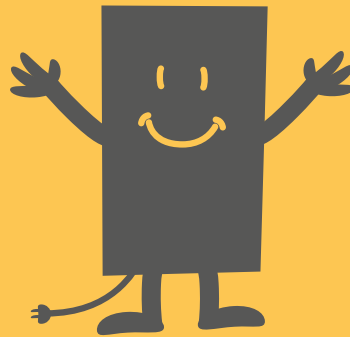
heatness® worldwide

heatness® worldwide

heatness® infrared heaters are distributed in Austria, Germany, Switzerland, South Africa and Canada.



Model Fine Series Black Glass XL



Warranty:
4 Years

All statements without guarantee.

heatness®

Tel: +4318903628
Mail: office@heatness.com
Web: www.heatness.com

www.heatness.com
office@heatness.com