

# AI SPPSU

Building Outnovation for the long term

SUPERIOR  
PERFORMANCE TO  
PROVIDE YOU WITH  
MAXIMUM QUALITY



AI S

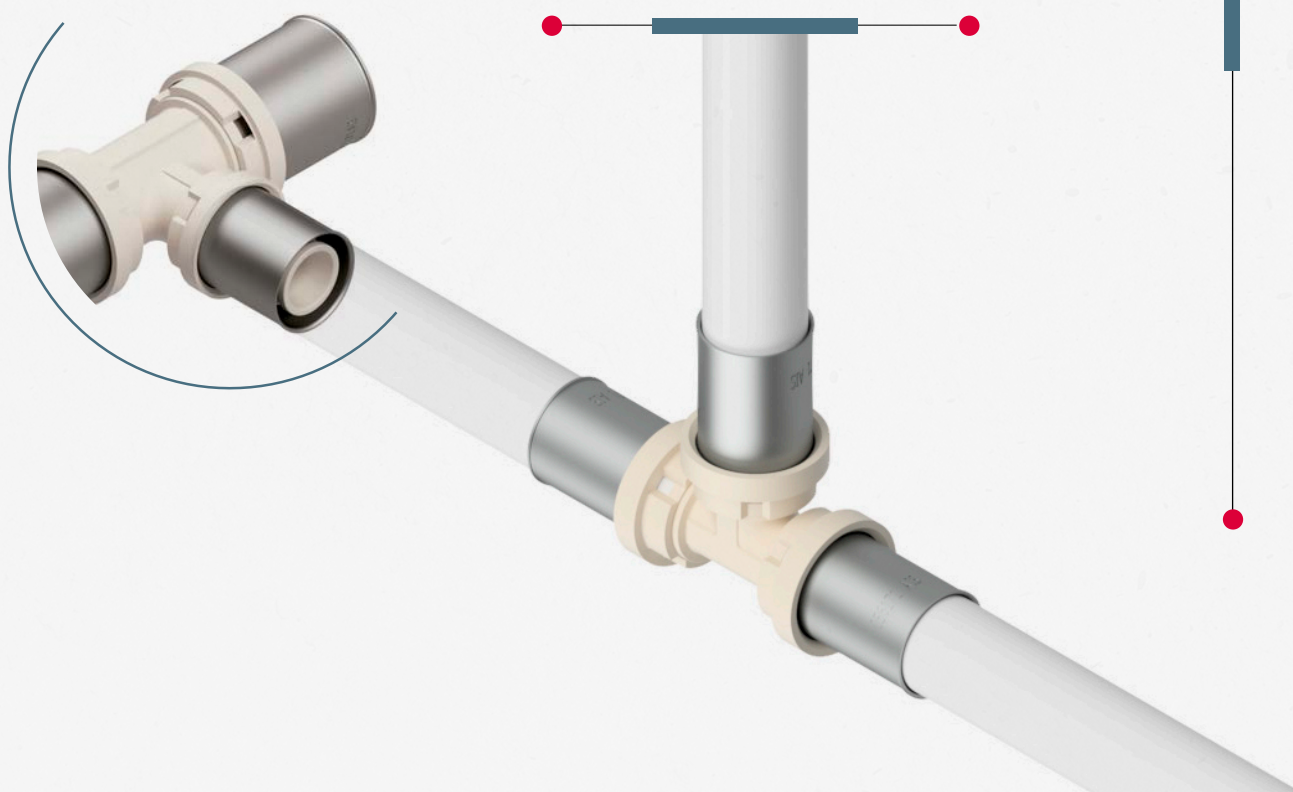


Discover the PPSU system and improve the performance of your installations

## AIS PPSU

Understanding the needs of our clients is the starting point for all the work we carry out at **AIS Building Outnovation**. It is from this starting point that we can develop new products, which deliver added value to clients from the outset.

Our AIS PPSU product range, manufactured in Polyphenylsulfone (PPSU), is one of the developments that represents a huge leap in quality. **PPSU** is an advanced engineering plastic, perfect for plumbing and heating installations. Its high level of performance makes it as reliable as traditional metallic materials yet much **lighter, resistant and easy to install**.





## A HIGH-QUALITY MATERIAL, WITH NO PARTICLE MIGRATION INTO THE WATER, FOR ALL TYPES OF INSTALLATIONS

### HIGH RETURN

**AIS PPSU** provides the same performance as metallic accessories at a much **more stable and competitive price**.



### GREATER DURABILITY

As a material with no surface roughness, it has high resistance to incrustations and, therefore, to calcification. In addition, it is **fully resistant to corrosion**.



### MORE RESISTANT

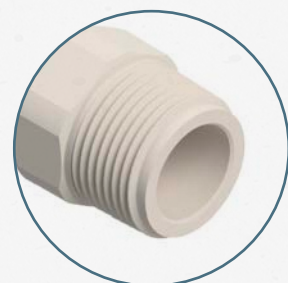
**PPSU** is perfect for installations which require increased hygiene measures and may require some kind of treatment, for example, to **combat legionella**; given that the material is more resistant to chlorination.

### MAXIMUM EFFICIENCY

There is no reduction in flow due to incrustations and, therefore, there are **no additional load losses produced** in the installations.

### MORE VERSATILE

We use PPSU 16 to 32 mm diameter accessories for U, RF, TH and H jaw profiles. PPSU 40 to 63 mm **accessories are compatible** with U and TH jaw profiles.



INCREASE YOUR LEVEL OF COMPETENCE. **MOVE TO AIS PPSU.**



---

AISPPSU

For more information,  
e-mail us at  
[info@aisoutnovation.com](mailto:info@aisoutnovation.com)