



At the Cutting Edge of Building Management Technology



Investor



Planner



System Integrator

Efficiency, flexibility, comfort,
investment protection ... today's
modern building management
technology has a range of
requirements to fulfill.

In the next few pages, we would like
to show you how to bring all this
under one roof, from BMSControl –
our building management solution, to
profiting from our know-how, for you
as a planner, a system integrator or as
an investor.

Follow us ...

Long-term investments require far-sightedness. But how does something as short-lived as software development fit into your long-term goals? Which factors are decisive when selecting a software solution such as BMSControl?

→ **High investment protection**

BMSControl is based on Microsoft standard technology. This means that we can offer you the maximum in openness and future protection.

→ **Independent and open**

BMSControl supports a wide range of standards and is being continually extended. The standard libraries are tested and used widely.

→ **Know-how and experience**

We have a range of large project references – national and international. We can guarantee you experience and success.

→ **Worry-free package**

BMSControl is a tool that fulfills all the requirements of modern building management and renders engineering faster and simpler.

→ **Future-proof, future-oriented**

The insights gained from research projects with partners such as the Technical University of Vienna continually flow into the improvement of BMSControl.

→ **Certified**

BMSControl is certified (BACnet, ISO 50.001) and is used internationally. We are gold partners of Microsoft and operate according to the latest insights in software development.



Are you searching for a partner who will stand by your side with know-how and modern tools?

Someone who brings experience with a wide range of projects into the partnership and inspires you from the start?

→ **Flexible and fast**

BMSControl is our automation system for building management systems. It has outstanding efficiency and a high degree of flexibility throughout the implementation process.

→ **Know-How and experience**

You will profit from our project know-how, from the tender phase to the design of consistent engineering.

→ **Support when it counts**

As a systems developer, we can offer you a service that far exceeds training and support.

→ **Energy efficiency & future-proof**

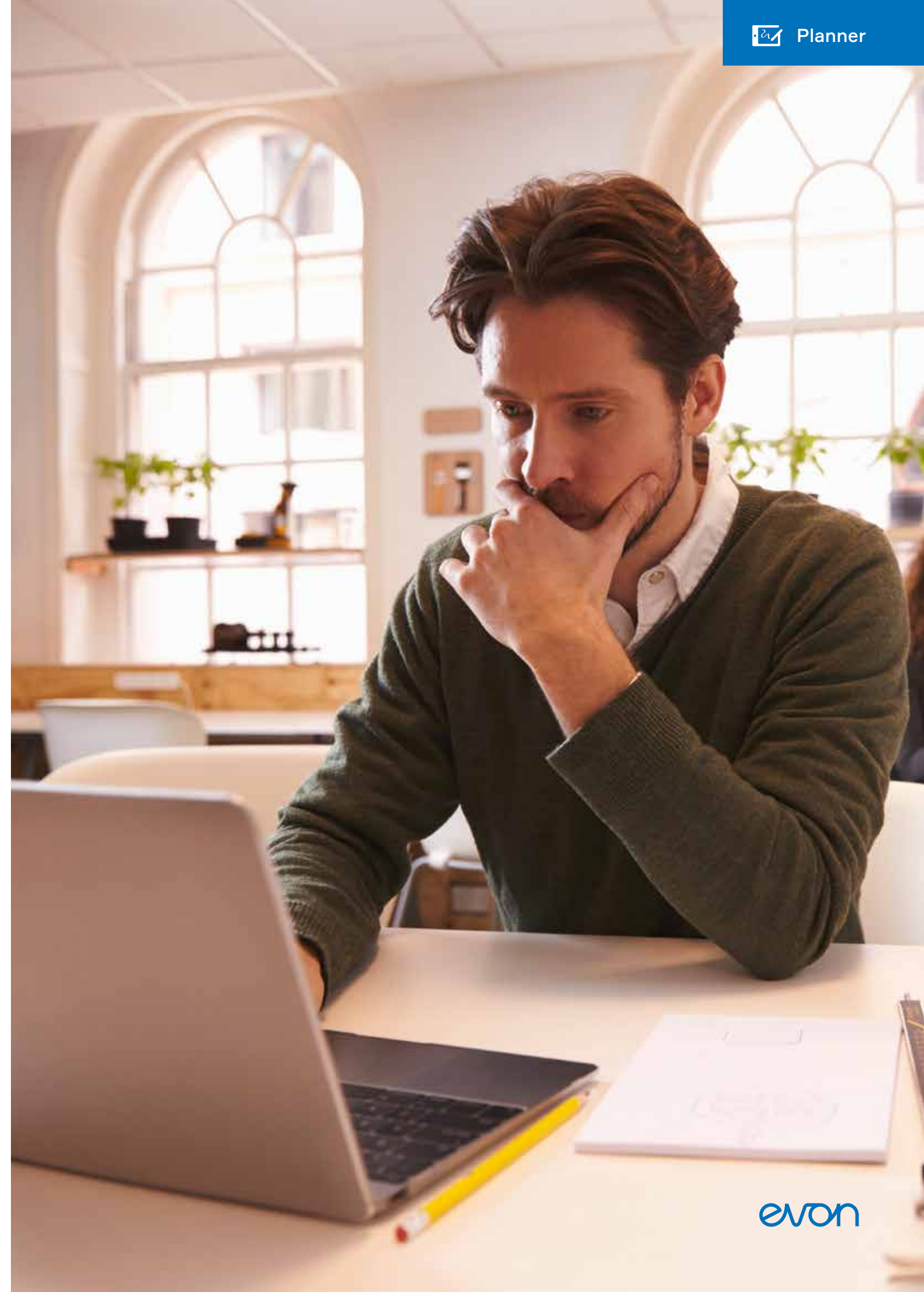
Energy management, the integration and optimisation of different energy sources (solar, geothermal, concrete core ...) are all parts of BMSControl. For one building alone, or centrally operated for groups of building.

→ **Modern and open**

Flexibility in planning today is unavoidable. Planning iterations therefore require a rapid and error-minimising tool.

→ **Research and development**

The insights gained from our research projects continually flows into our software.



The decision for a solution such as BMSControl requires a series of clear answers from you as the system integrator.

Answers to questions concerning peak loads, flexibility, user-friendliness and innovative power. Answers that are the beginning of a successful partnership.

→ Usability

We understand usability on the one hand as a core principle in the software. On the other, our view is that the principle is also valid for engineering and day-to-day operation: a solution that is consistent and supports you with a validated library and that makes your day simply easier.

→ Experience and know-how

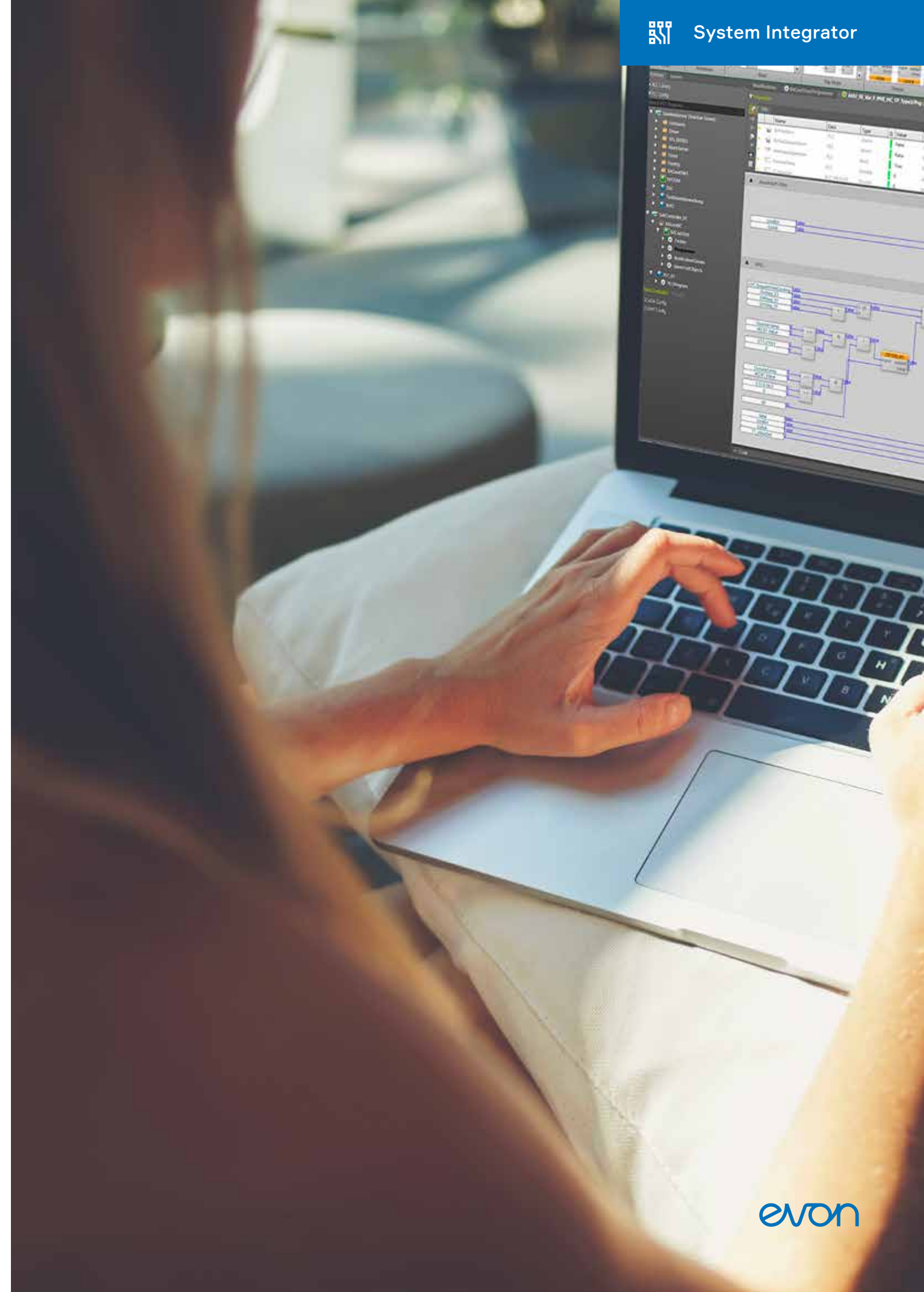
We see ourselves as the interface between development and project execution. This ensures that new knowledge and insights continually flow into BMSControl – from you, from ourselves and from other partners.

→ Peak coverage

Peaks require rapid reaction and support. As your partner, we see it as our responsibility to stand by your side with qualified, experienced experts should the worst ever happen.

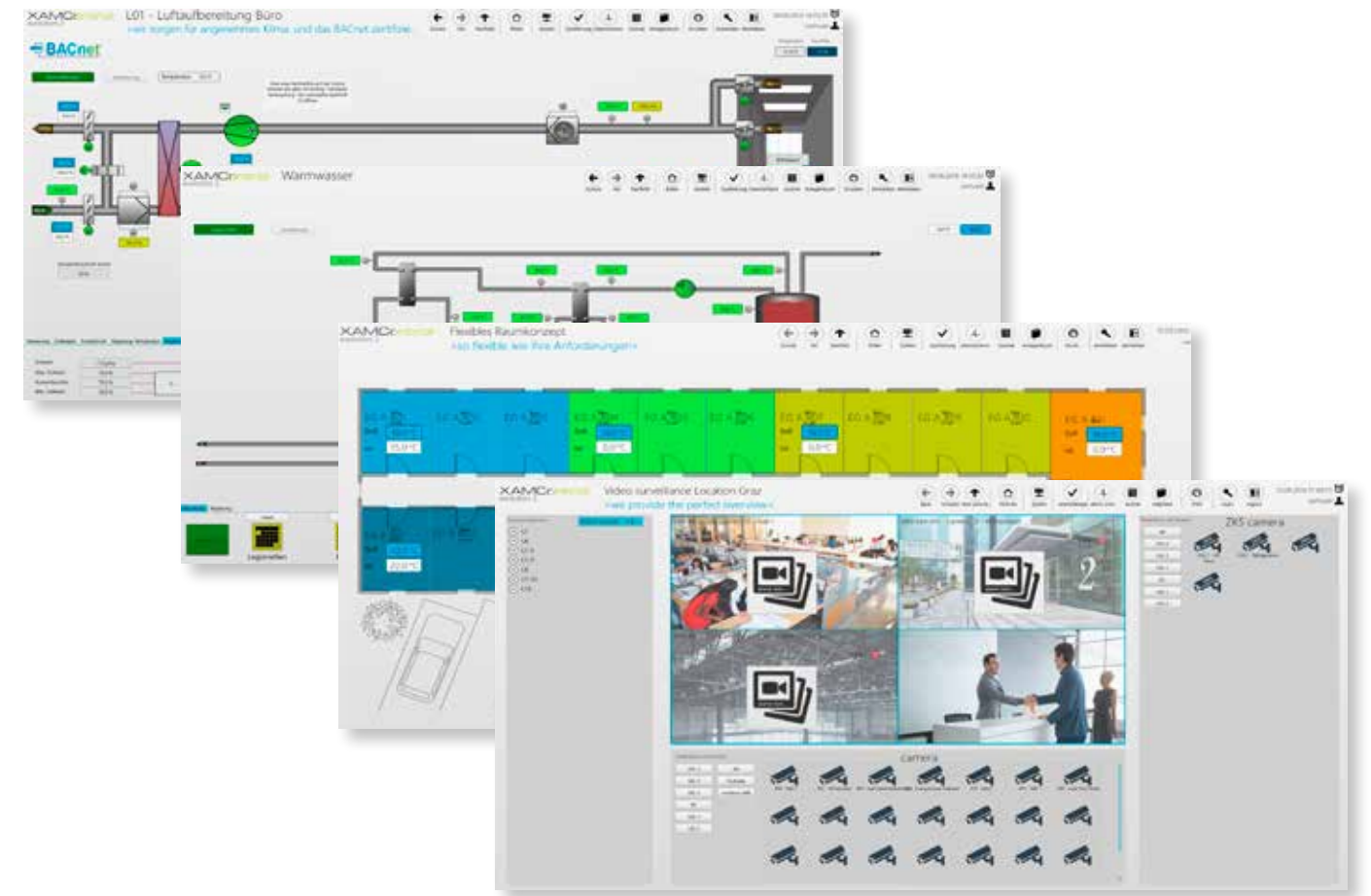
→ Visualization, automation ...

We think that a software solution such as BMSControl has to fulfill all requirements of modern building management systems. For this reason, we rely on consistent engineering from automation via visualization to reporting and with openness towards individual planning tools and interfaces.



BMSControl is based on XAMControl.
XAMControl is the automation platform by evon.

The system is open, based on modern software standards and distinguishes itself by its high engineering efficiency, flexibility, redundancy in the form of high availability, intuitive operation and investment protection.



→ evon GmbH

The company evon GmbH is located in St. Ruprecht an der Raab and develops the software solution XAMControl. The company was founded in 2009 and today employs more than 50 people. The focus of its activities is software development, project support for system integrators and the execution of automation projects in the building management, traffic management and process management sectors. Our portfolio on offer to our partners ranges from licences via peak load coverage up to project execution and commissioning.

→ XAMControl

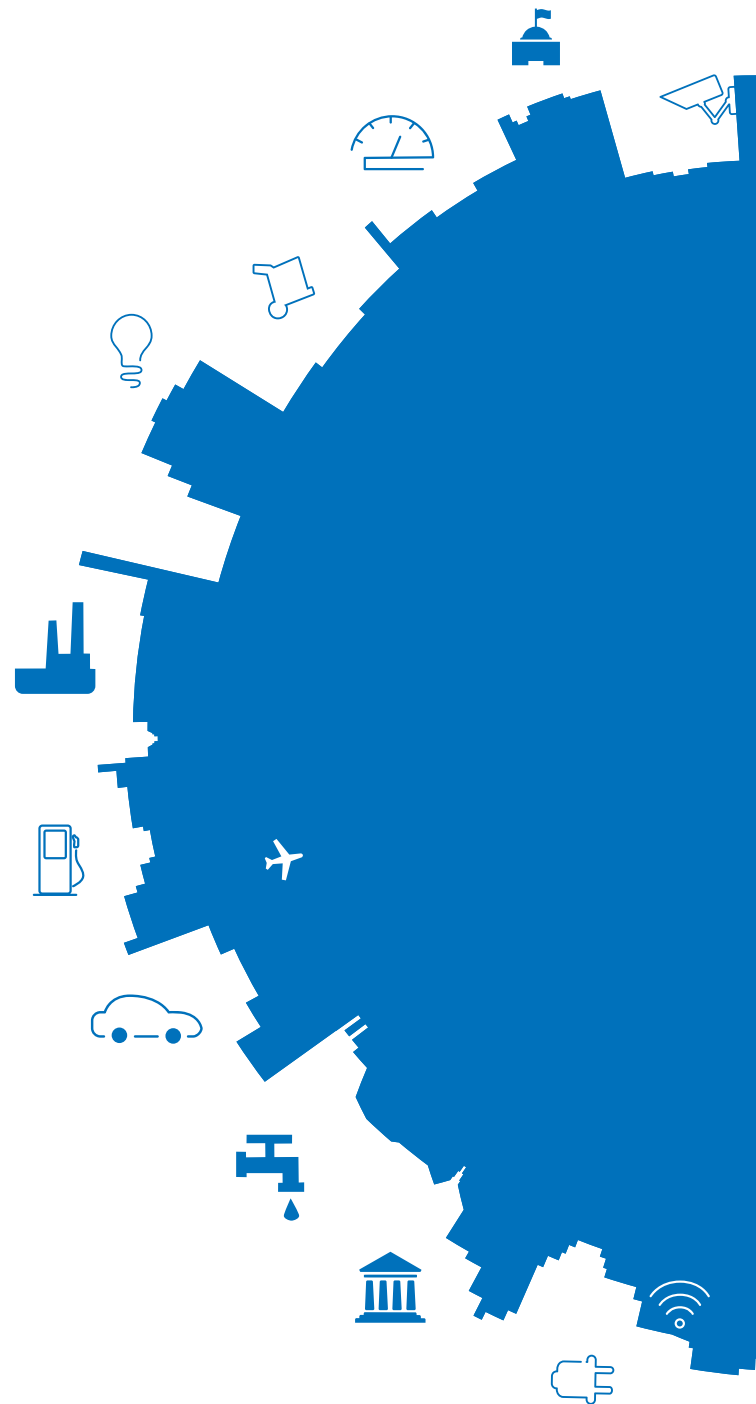
XAMControl is an automation platform. The software is hardware-independent and is continuously being developed further by us. The focus is on the networking of IT and automation. Based on standard technologies (Microsoft .NET, SQL server), XAMControl offers all the functionality of SCADA up to PLC level in a single environment.

→ BMSControl

BMSControl provides the complete functional scope of XAMControl for building management. It also contains a series of libraries and functions that have been specially developed to guarantee the efficient implementation of your project. Particular emphasis has been placed on energy management and efficiency, commissioning, evaluation and statistics, modern visualization and usability.

BMSControl Highlights

- BACnet certified (B-OWS, B-BC)
- E-plan integration (CAD, PDF)
- Integrated documentation management
- Office integration (Excel, Word)
- Solution import
- Redundant server (MS SQL)
- Alarm (sms, email...)
- Comprehensive and validated libraries
- Flexible spatial concept during operation
- System handbook for commissioning
- Wide range of evaluations and statistics



evon GmbH | Wollsdorf 154 | 8181 St. Ruprecht an der Raab
T. +43(0)3178 21800-0 | **F.** +43(0)3178 21800-110 | office@evon-automation.com
www.evon-automation.com