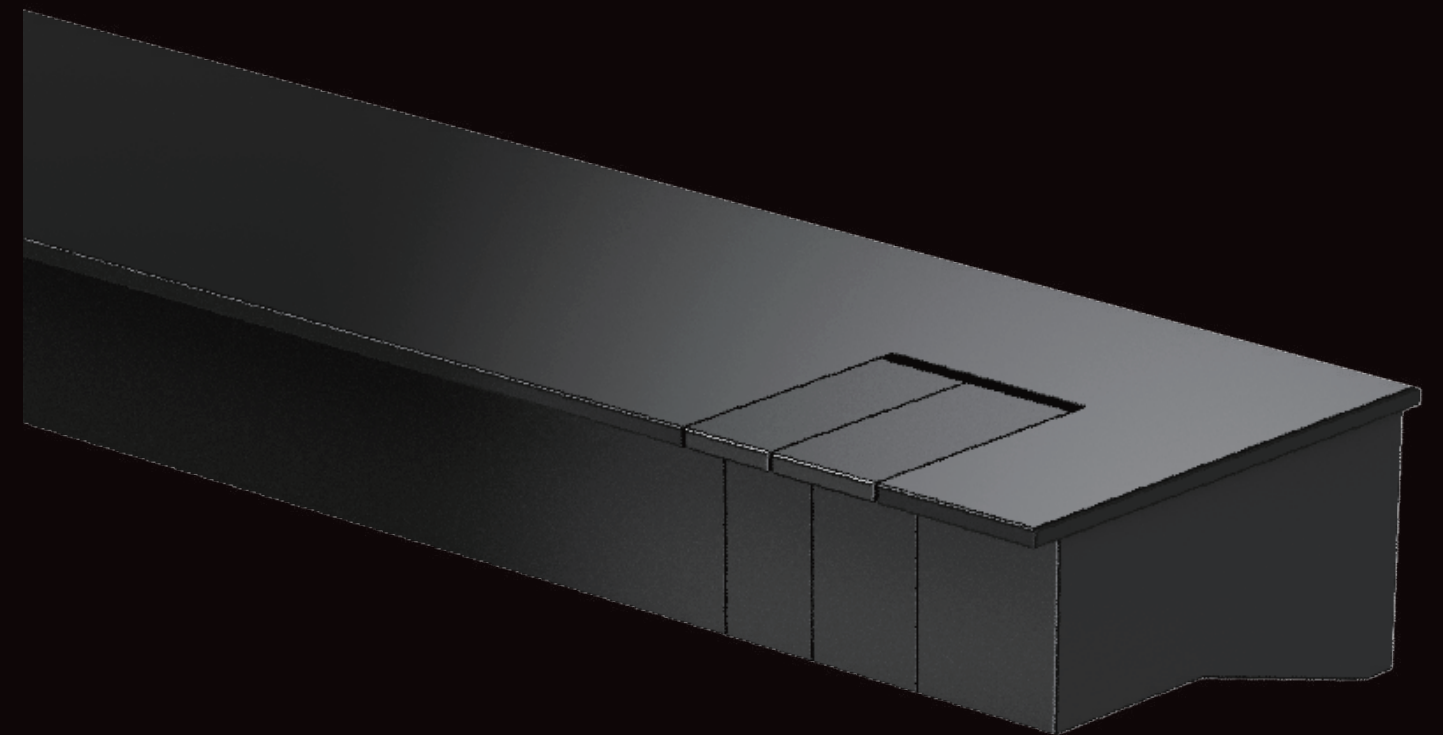


Tectonics

COLLECETION

GENERAL
S H O W E R



GENERAL
S H O W E R

We pursue
a sustainable, transhistorical design
closest to its essence.





Concept of tradition not to be reduced.
But to be defined
for discipline's autonomy.

We explore the potentiality of diagrams
not as regulatory tools of geometry
but as generative process and inductive analysis.





Tectonics COLLECETION

Shower Faucet

Deck Mount Basin Faucet

Wall Mount Basin Faucet



Built-In 2-way Diverting Function

Patented TPS Cartridge has a built-in 2-way diverter inside the cartridge with 2-inlet and 2-outlet ports.

This technology enables streamlined faucet design by eliminating extra diverters and complex structure with diverter mounted on the faucet.



Temperature Memory Function

TPS Cartridge memorizes the last shower temperature setting through its patented independent temperature control, thus the user have no need to wait or adjust for comfortable showering temperature every time they turn on the faucet.

Conventional cartridge mostly cannot provide water of exactly the same temperature when closing/re-opening the faucet or adjusting the volume of water flow.

This feature encourages consumers to turn off the faucet when not needed as water temperature remains the same, enabling them to save significant volume of water.

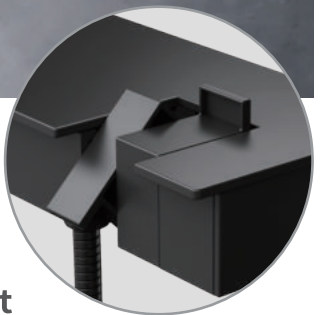


Water Saving Function for a Green Environment

Widened to 90°, easy-to-control rotating knob of TPS Cartridge allows users to reduce volume of water flow easily for huge water saving compared to the conventional lever handle that has only limited 25° control range.

Also, temperature variation during volume change of water flow is another factor forcing consumers to use conventional faucet at fully opened volume of water flow.

With TPS Cartridge that provides water of consistent temperature water at all circumstances, you can join in saving water to create a greener planet for ourselves and the future generations to come.





GB301B

Hand Shower

Brushed Black Faucet
Black Showers



GB303B

Hand Shower
Tub Spout

Brushed Black Faucet
Black Showers



GB304B

Hand Shower
Rain Shower

Brushed Black Faucet
Black Showers



GB305B

Hand Shower
Rain Shower
Tub Spout

Brushed Black Faucet
Black Showers





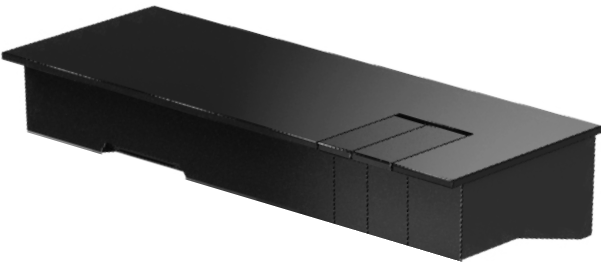
GB301M

Hand Shower
Matte Black Faucet
Chrome Showers



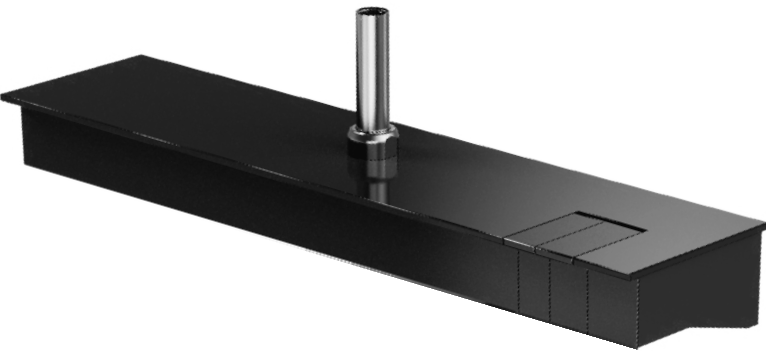
GB303M

Hand Shower
Tub Spout
Matte Black Faucet
Chrome Showers



GB304M

Hand Shower
Rain Shower
Matte Black Faucet
Chrome Showers



GB305M

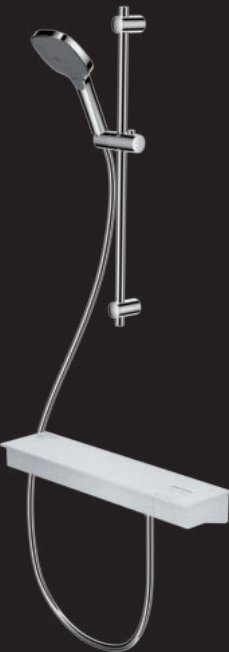
Hand Shower
Rain Shower
Tub Spout
Matte Black Faucet
Chrome Showers





GB301W

Hand Shower
White Faucet
Chrome Showers



GB303W

Hand Shower
Tub Spout
White Faucet
Chrome Showers



GB304W

Hand Shower
Rain Shower
White Faucet
Chrome Showers



GB305W

Hand Shower
Rain Shower
Tub Spout
White Faucet
Chrome Showers

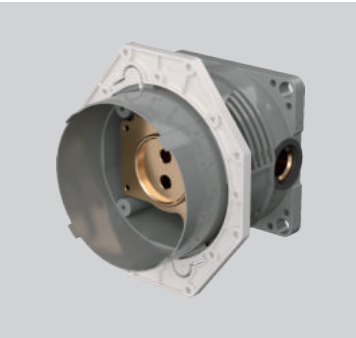




GL302B

- Matte Black

Rough-In for Dry wall



GL303B

- Matte Black

Rough-In for
Concrete/Brick wall



Tectonics Technology

TPS In-Line Cartridge

Patented TPS In-Line technology allows the water to flow to the same direction unlike all conventional products, enabling stream-lined faucet design and easy installation.

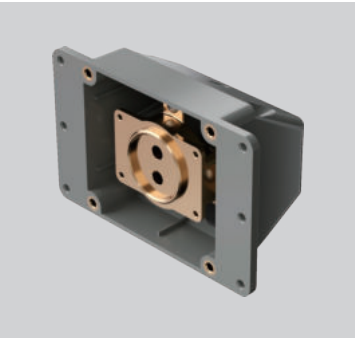
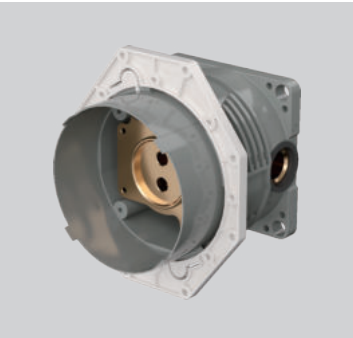


GL302C/303C

- Chrome

Rough-In for Dry wall

Rough-In for
Concrete/Brick wall





GL301B/301W

- Matte Black
- White

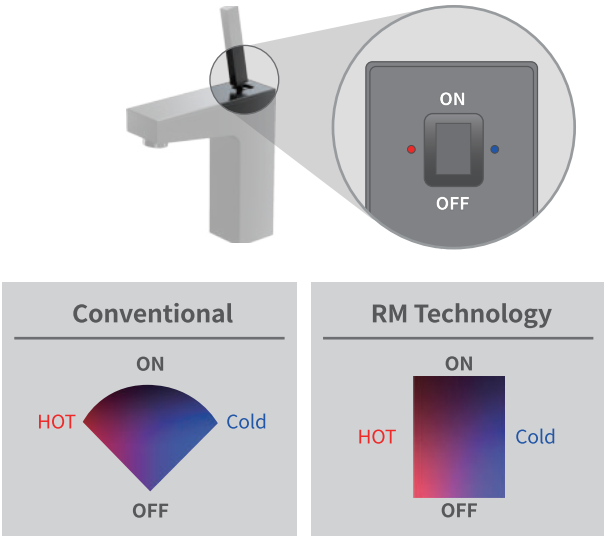


Tectonics Technology

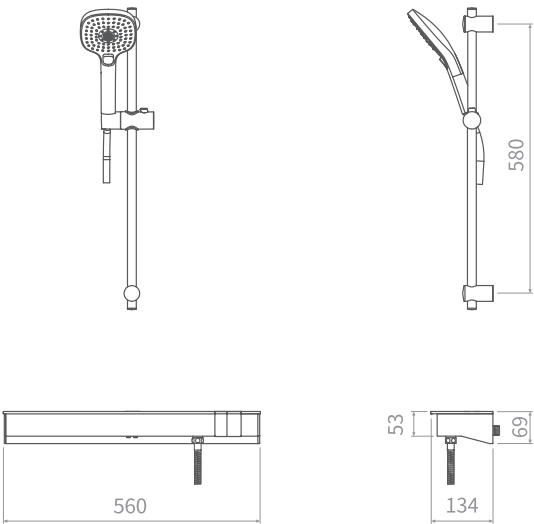
RM Cartridge

Conventional Joystick cartridges have issues in completing valve closure unless the user carefully maneuver the joy stick to locate to a certain closing point. Otherwise the faucet would leak significant amount of water since cartridge is not completely closed.

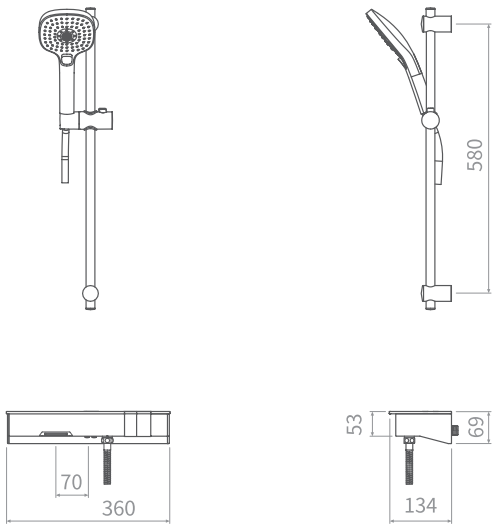
General Shower proudly introduces its patented Rectangular-Movement Joystick cartridge. The user can close the faucet completely by just pulling the joy stick towards any point of off-line.



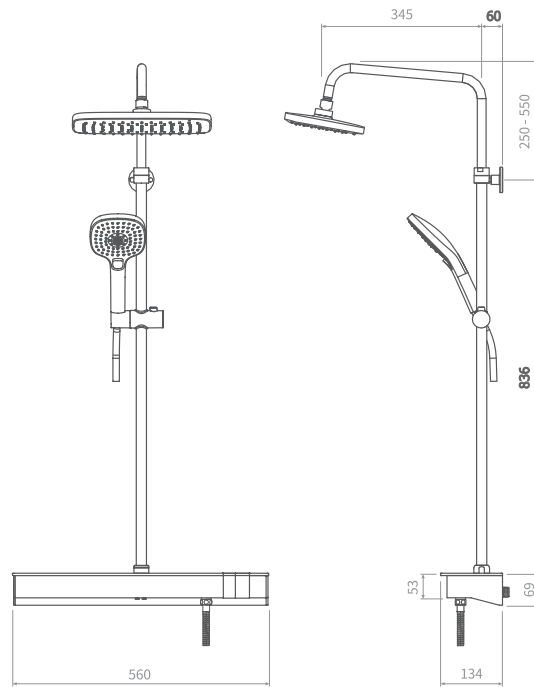
GB301



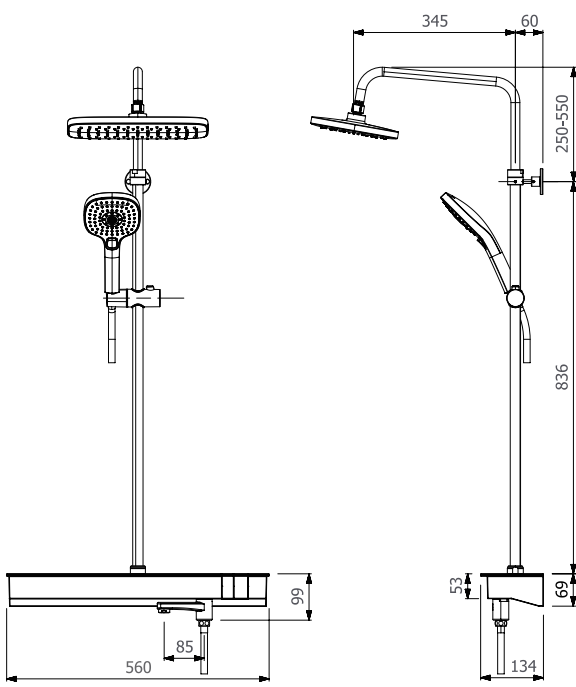
GB303



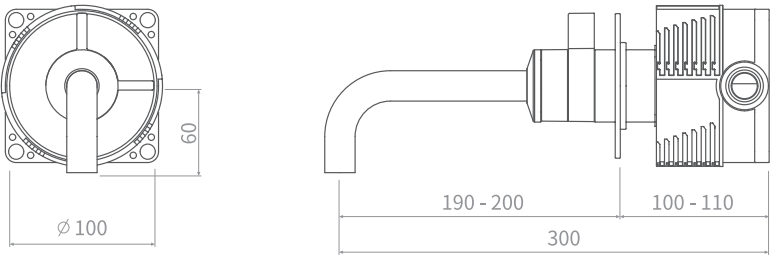
GB304



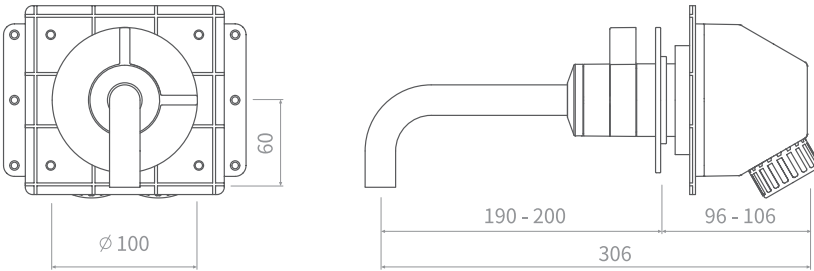
GB305



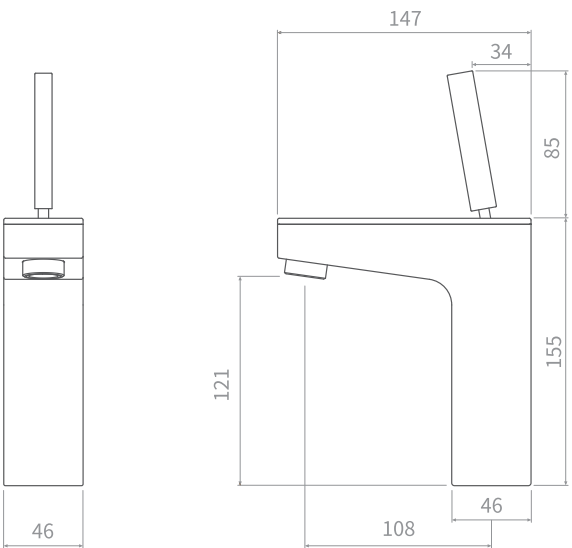
GL302



GL303



GL301



Tectonics Lab

Tectonics Lab is an internationally recognized design laboratory. Established by Hyundai Kim and Sukyung Kim, the laboratory provides a full scope of involvements with the relationship of architecture, landscape, and product design.

The works of Tectonics Lab have been featured in The Financial Times, Dezeen, Divisare, Architect Magazine, SPACE(A&HCI), and were exhibited at The 12th International Festival of Architecture and Urbanism Architecture Week Prague 2018.



Hyundai Kim is the founding director of Tectonics Lab. He holds a Master of Architecture from Princeton University and a Bachelor of Engineering from Yonsei University.

He is a registered architect in the state of Florida, United States. After working at Skidmore, Owings & Merrill LLP New York, he joined the faculty as Professor of Architecture at Ewha Womans University in Seoul.

Sukyung Kim is the co-founder of Tectonics Lab. She received a Bachelor of Architecture from Ewha Womans University



Shower Faucet



Wall Mount Basin Faucet



Deck Mount Basin Faucet



H: www.generalshower.co.kr
www.tapart.co.kr
E: info@generalshower.co.kr
T. +82-32-817-9991
F. +82-70-8260-1000

Tapart Technology Inc.
120 Namdongseo-ro, Namdong-gu,
Incheon 21696 R.O. Korea