

YZ DITEC

YUEZHONG DIGITAL TECHNOLOGY

Exquisite machinery and artistic future

C1 Servo Hoist

CERTIFICATE of Conformity

Registration No.: AK 50663205 0001
Report No.: CN255IBT 001
Holder: Guangzhou Yuezhong Digital Technology Co., Ltd.
No. 17, Haibei Wenchang Road, Hailong Street, Liwan District, Guangzhou, 510000 Guangdong P.R. China
Product: Chain Hoist
(Electric Chain Hoist)

Type designation listed on the next page

The certificate of conformity refers to the above-mentioned product. This is to certify that the specimen is in conformity with the assessment requirement mentioned on the next page. This certificate does not imply assessment of the production of the product and does not permit the use of a TÜV Rheinland mark of conformity.

Date: 2025-01-21

Certification Body

Ming Shan
Ming Shan



TÜV Rheinland LGA Products GmbH - Tillystraße 2 - 90431 Nürnberg

www.tuv.com

 **TÜVRheinland®**
Precisely Right.

Page 1 of 2

CERTIFICATE of Conformity

Registration No.: AK 50663205 0001
Product: Chain Hoist
(Electric Chain Hoist)
Tested according to: EN ISO 12100:2010
EN 14492-2:2019
EN 60204-32:2008
SQP2:2018

Identification: Type Designation
BM01A-0.5T
Serial No.: 24121001
Application Type: C1

Remarks: 1. Refer to test report CN255IBT 001 for details.
2. The machinery is considered incomplete and must not be put into service until final installation.
It has to be checked in compliance with SQP2 2018.



TÜV Rheinland LGA Products GmbH - Tillystraße 2 - 90431 Nürnberg

www.tuv.com

 **TÜVRheinland®**
Precisely Right.

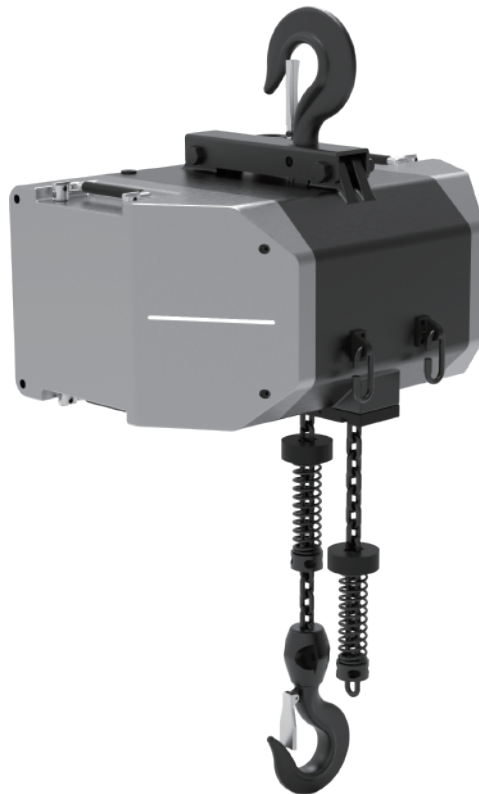
Page 2 of 2

C1 Servo Hoist BW-01A-0.5T

Specification

1. Safety standards: DGUV 17 (BGV C1) and the European standard EN 17206
2. Load capacity: 500kg
3. Speed: 0.45m/s, max:0.5m/s
4. Integrated load cell
5. 4-point limit switch
6. Electrical overload protection
7. Absolute value servo motor
8. Dual quiet brakes with brake monitoring
9. Configure normal or reverse hanging
10. Weight:69kg
10. Noise: 68dB
11. IP class: IP65
12. Size: 510 * 370 * 240mm
13. ISO: M5
14. Completely matches Tortoise control system
15. G80 level chain, 8times safety factor, comply with EN818-7
16. Power:2.9kw 8A; Voltage:380-400v

**C1 Servo Hoist
BW-01A-0.5T**

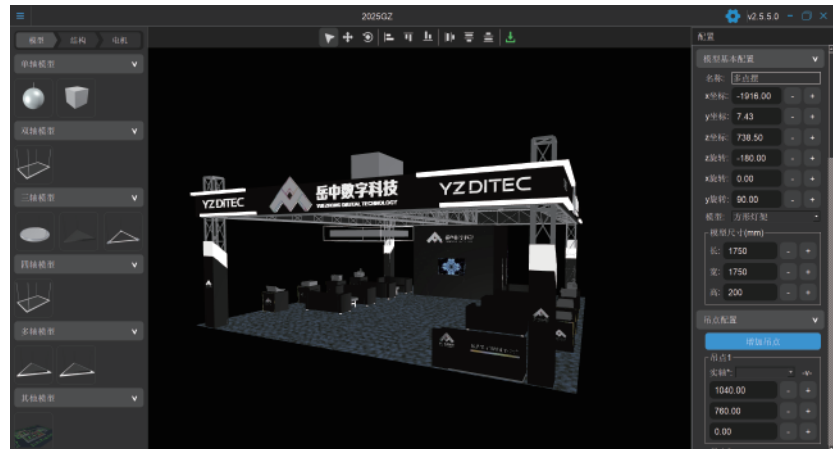


Pando-Control Software

Configuration Platform

Configuration platform is mainly used for early engineering construction, using different machinery for different projects and configuring dedicated engineering for different project.

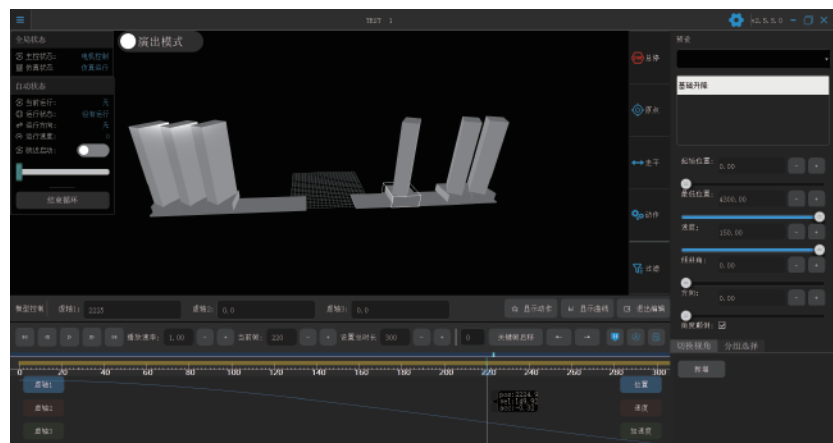
In this software, you can directly import pre-made 3D models; also you can design and build your own front-end configuration. The software built-in preset mechanical models, which can be easily dragged and moved to complete the model construction. It's convenient and easy to operate.



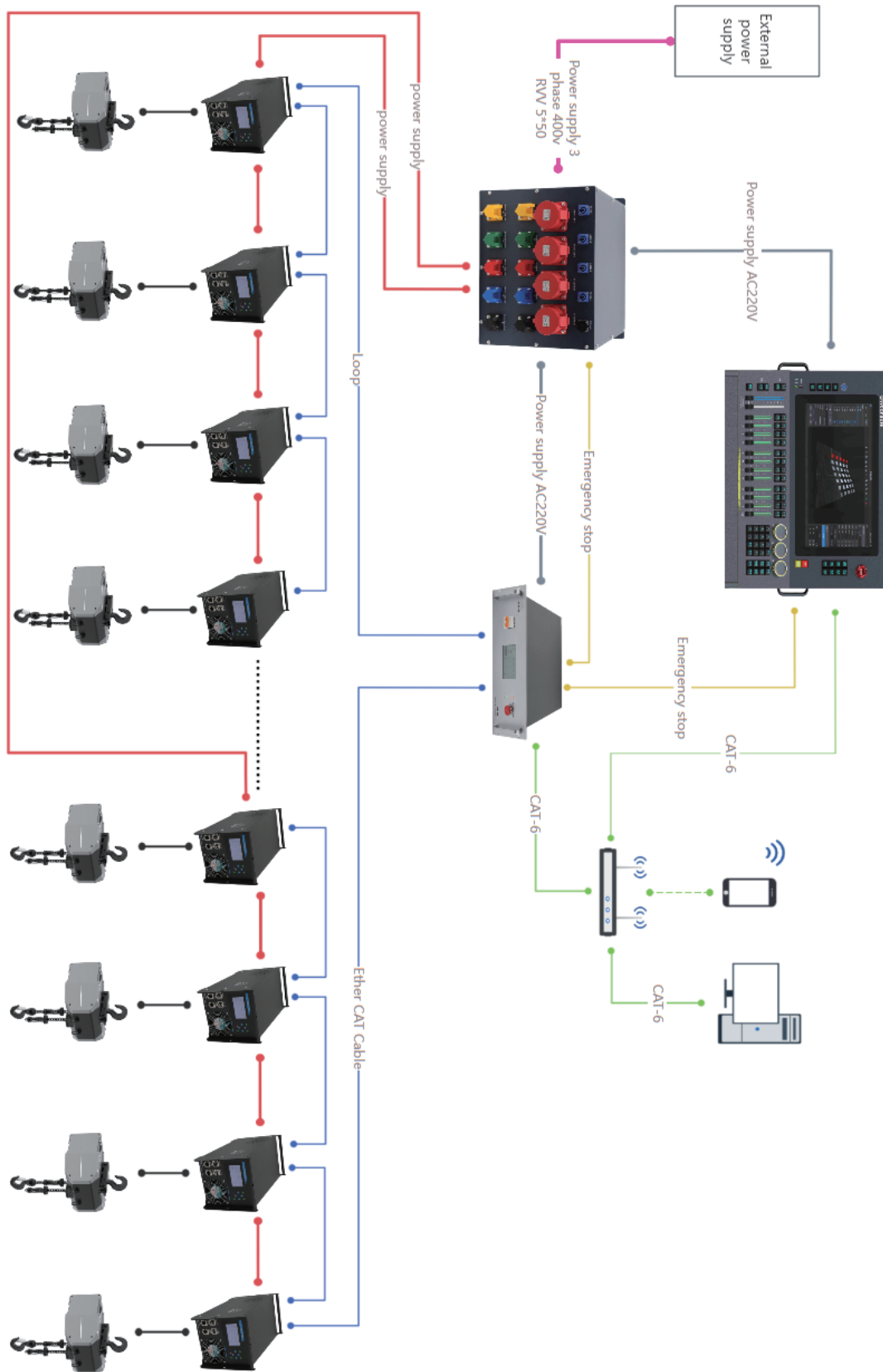
Operation Platform

Operation platform, is mainly used for mechanical programming control and mechanical operation. The software supports off-line programming without on-site machinery connecting. The project motion can be pre-programmed to reduce on-site debugging time.

During debugging, precise positioning and zero error operation can be achieved through wireless operation of devices such as mobile phones, computers, and tablets. In addition, the software interface data can be used to monitor the operation status of the machine and troubleshoot any abnormal faults.



Black Warrior System Diagram



BW Console

Specification

1. Be convenient to design 3D modeling with built-in Pando 3D control software
2. Support configuration of virtual and real machine
3. Motion programming based on timeline
4. Offline programming simulation
5. Emergency stop switch; external switch by option
6. Support manual control for real machine and virtual modeling , support posture and dynamic motion control modes
7. Support status monitoring
8. System log function

BW Console



Main Controller (BW-MC)

Specification

1. Control 64/128 devices(including trolley and winch) from a single unit
2. Support remote monitoring, debugging, and online updates
3. Support emergency stop and its link expansion, support Catalog 0 and Catalog 1 stop
4. Input Voltage: AC100~240V;50~60Hz
5. Input Current: 3A/110VAC, 1.5A/220VAC
6. Interface: Emergency stop*1; 2P air switch*1; indicator lights*2; EtherCAT port*2; Ethernet port*1; Emergency stop interface*2; Power interface*1
7. Size: 482 * 388 * 177mm

Main Controller
(BW-MC)



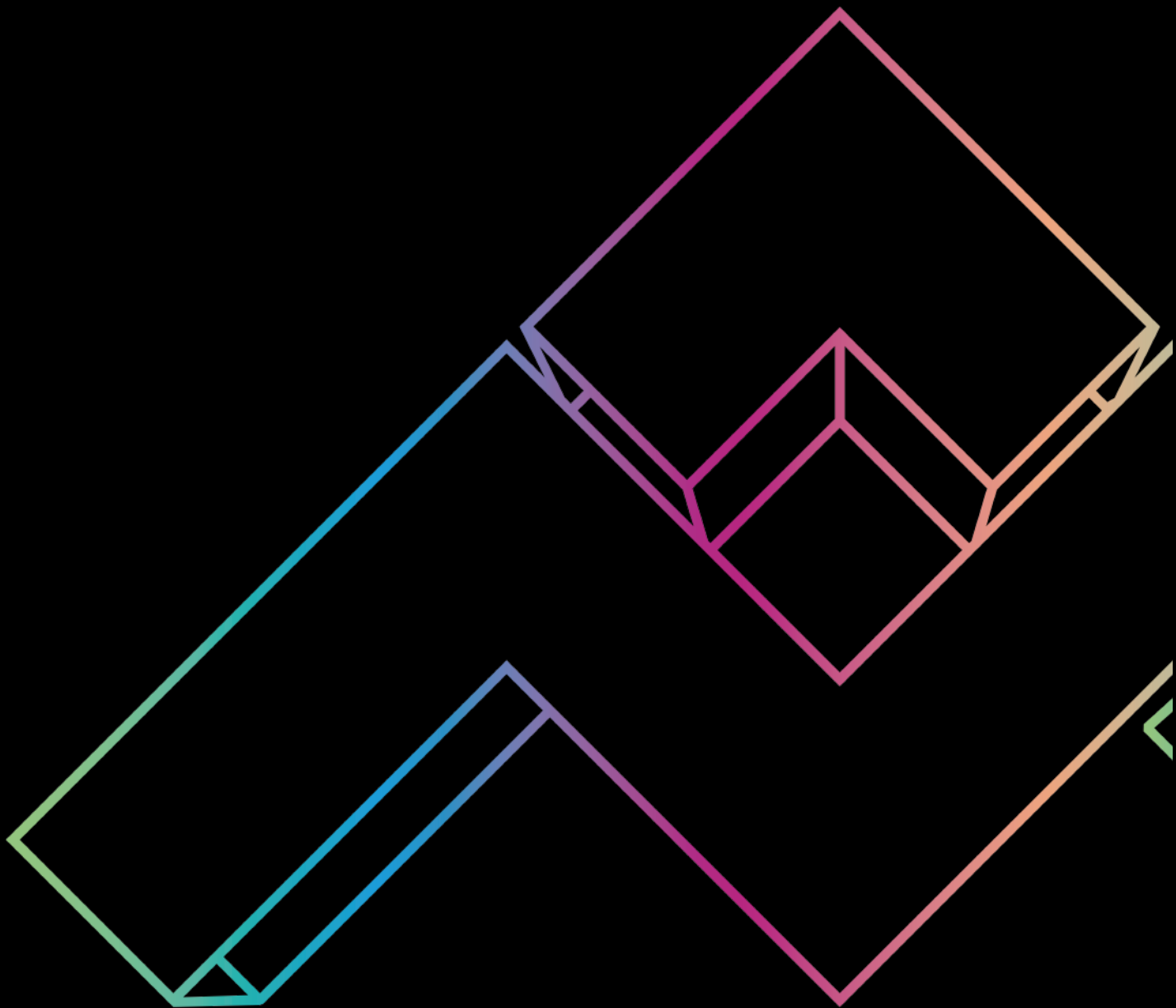
Driver Controller (BW-DC)

Specification

1. Power input: AC 380V \pm 10% 50-60Hz
2. Servo system: Leading Chinese brand CNC servo controller with high performance and fast response, with a response bandwidth of 3kHz
3. Control panel: independently developed based on embedded microcontrollers, support loop control function
4. Display screen: 4.3inches, resolution 480 * 272, 262K colors
5. Interface: heavy-duty connector * 1, power aviation head one plug and one socket, safety power switch * 1, external weighing connector * 1, remote control port * 1, EtherCAT port * 2
6. Language: Chinese, English
7. Size: 500 * 230 * 295mm
8. BW-DC is versatile to drive various servo motors

**Driver Controller
(BW-DC)**





Guangzhou Yuezhong Digital Technology Co., Ltd

Guangzhou Zhongsheng Trade Co., Ltd.

Phone: Mr.Huang +86 18702078344

Email: huangjiaming@yzview.com

Address: No. 17 Haibei Wenchang Road, Hailong Street,
Liwan District, Guangzhou, China



Facebook



Youtube

滚滚长江东逝水