

EXPLO



SFX

IGNITION SYSTEMS • SPECIAL EFFECTS



EXPLO
SFX

FOR YOUR SHOW



EXPLO SFX

„Communication and cooperation with our customers have always been a priority for us.“

Over many years, the Explo SFX brand has become a globally recognized name for ignition systems and special effects. Through its inherent commitment to delivering reliable and spectacular products, a small company in Klagenfurt has grown into a business with a global presence.

The fact that such progress has been possible is due to our ongoing good relationships with customers and partners, which have proven to be a fertile ground for new products and improvements. Time and again, it has proven essential that we are accessible and responsive to our customers' needs.

Ultimately, our goal is not only to sell our products, but also to enable the creation of successful and ever more impressive shows.

For the future, we are committed to further improving and delivering the best
FOR YOUR SHOW.

„Our quality standard: MADE IN AUSTRIA“

Out of the necessity to develop and manufacture from scratch, we have made it a virtue. Over the years, this has allowed us to develop the expertise to build practical and reliable devices whose lifespan doesn't end with the expiration of the warranty. The pride of a craftsman in having done good work has never left us and remains a driving force in all areas.

For us, this also means that there is always something to improve, to develop even closer to everyday applications, and to incorporate new manufacturing techniques into our processes. A unique team of employees from diverse backgrounds, contributing in various ways, continually finds new solutions to the challenges that arise from our quality standards. The quality standard that Explo SFX sets for itself and that you benefit from.



X2 IGNITION SYSTEM



The X2 wireless system combines all Explo SFX products into a seamless show setup.

The Explo SFX X2 system integrates ignition and effect devices as well as software into a comprehensive, unified structure. This allows pyrotechnics, flame effects, and CO2 devices to be synchronized and centrally controlled.

The bidirectional wireless connection between transmitters and receivers enables the settings of the devices to be read and programmed from the transmitter.

Through multiple encryption layers, the system can be divided into subsystems, effectively separating parts of a show or installation. This applies regardless of whether it involves flame projectors, ignition systems, or the CO2-Wave Jet.

With 450 individually controllable modules and 16,000 available ignition channels, large-scale show design can be planned and executed, while active resistance measurement on each channel ensures the monitoring of the channels used in the show, providing enhanced control.

Thanks to system-internal timecodes, channels and devices can be stepped at extremely short intervals of 10ms. This allows rapid ignition sequences to be easily programmed.

Continuous and always available firmware updates for all devices can be downloaded from the Explo SFX website at any time and independently uploaded to the devices. This ensures that existing systems remain up to date.

In addition to fully automated shows started from the transmitter, they can also be initiated in „Stick Mode“ directly from a connected PC. Additionally, individual sequences and ignitions can be triggered directly from the transmitter.



TX2-70K TRANSMITTER



The flagship of our transmitter series

As the core component of our ignition system lineup, this transmitter offers all the functions of the X2 series and includes an additional ten reserve channels, which can be triggered directly via dedicated buttons.

The TX2-70K transmitter comes in a robust HPRC case, making it easy and safe to transport and store.

Thanks to the bidirectional wireless system, the transmitter can query the status of the receivers. However, the main function of the transmitter is the transmission and initiation of automated shows, which, thanks to internal time-code synchronization, run in sync with the music across the various receivers.

Performance: With 16,000 ignition channels, even very large-scale shows can be realized. The standby time of up to 16 hours allows for long operational days.



355 x 300 x 155mm



KG 4,6kg



TX2-STAGE TRANSMITTER

The full range in a compact, portable package

All the essential functions of a 70K transmitter in a handheld device. The TX2-Stage handheld transmitter offers long range and, with 16,000 channels, provides the same possibilities as the TX2-70K.

Whether used as a transmitter for smaller shows without a fixed setup or as a backup device, the TX2-Stage meets all requirements.

Like its larger counterpart, it supports the use of fully automated shows and Stick Mode.



170 x 85 x 50mm



0,7kg



TX2-20K TRANSMITTER

When it needs to be direct and simple

If an automated synchronized show is not possible or effects need to be triggered on cue, the TX2-20K handheld transmitter is the ideal choice.

With up to 20 directly controllable and 50 stepped channels, it is perfect for applications such as theater or concerts.

Equipped with special firmware and in combination with RX2-1K gas receivers, it becomes the perfect companion for sporting events.



170 x 85 x 35mm



0,3kg



RX2-70K RECEIVER

Strong Partner for Large Fireworks Displays

The largest receiver in the RX2 series features 70 individually controllable firing channels, which can be ignited at short 10ms intervals. Its robust and practical case design makes it ideal for outdoor applications, especially when combined with the optional protective cover.

Flexibility is provided by the version with split box connections, allowing the 20-channel split boxes to be positioned at a considerable distance from the receiver using dedicated split box cables. The integrated battery enables extremely long standby times, which can be further extended using the sleep mode.



355 x 300 x 155mm



4,7kg

RX2-30K RECEIVER

Reliable and Expandable

Similar to its larger counterpart, the 30 firing channels of the RX2-30K can be individually controlled in 10ms intervals.

This receiver is available both in a robust HPRC case and in a space-saving, powder-coated stainless steel housing.

By choosing the version with split box connections, the number of firing channels can be expanded to up to 70 using the separately available SP2-20K split boxes.



HPRC: 355 x 300 x 155mm
Steel: 330 x 176 x 80mm



HPRC: 4,7kg
Steel: 2,5kg



RX2-20K RECEIVER

Space-Saving Solution with 20 Channels

This relatively small receiver is perfect for use on stages. Thanks to the optional mounting plate for truss installation, it can easily be attached to rigging and stage elements. It also has the ideal number of channels for use with the WS20 angle shot system.

It also offers all the features of the larger receivers in a compact package.



430 x 71 x 60mm



KG 1,1kg



RX2-10K 230V RECEIVER

Control 230V Devices Directly via Wireless

Many devices and effects are controlled or activated directly with 230V. In such cases, you don't have to forgo control via radio and can rely on the RX2-10K 230V.

For example, you can control the CO2 Jet 230V and GX2 230V Compact with this receiver. Its ten channels can be programmed with different activation durations or operated individually to open and close as needed.



170 x 85 x 35mm



KG 0,3kg



RX2-5K RECEIVER



Full Power in a Compact Design

The RX2-5K is one of the smallest receivers in the RX2 series, yet it offers the same firing power on its five channels as the RX2-20K receiver.

Thanks to its compact design, it is ideal for stage applications, where it can be discreetly integrated into the set. Its relatively low weight also makes it suitable for drone applications that require a receiver with sufficient firing power.



124 x 70 x 29mm



0,18kg

RX2-1K RECEIVER

It Has Just One Job

The smallest and lightest receiver in our range. Thanks to its compact size, it can be easily concealed in costumes or clothing, making it perfect for close-proximity applications like triggering squibs.

Whenever a single ignition needs to be placed as discreetly as possible, the RX2-1K is the ideal solution.



79 x 60 x 23mm



0,12kg



RX2-WAVE-PLAYER

A Music Player for Seamless Integration into the Explo SFX System

The RX2-Wave-Player is a music playback device that can be wirelessly controlled via an Explo transmitter. With this product, pyrotechnic shows and music can be perfectly synchronized.

A built-in amplifier enhances sound output quality, while multi-layer encrypted wireless transmission ensures security. Standard SD memory cards are used as storage media.

The RX2-Wave-Player is available in a compact aluminum housing, a robust HPRC case, and as a 19" rack version.



225 x 170 x 67mm



KG 1,8kg



SMPTE TIMECODE MODEM

Synchronizing Interface

The SMPTE Timecode Modem was developed to synchronize the Explo SFX System with other show elements. This device handles the reception of SMPTE timecodes as well as the sending and receiving of MIDI timecodes.

To enhance reliability through more precise signal evaluation, a firmware-based error correction feature has been integrated.

Available in a compact aluminum housing and as a 19" rack unit.



225 x 170 x 67mm



KG 1,8kg

SP2-20K SPLIT BOX

The Cascadable Expansion Module

This module is not a receiver but a solution for extending received signals further away from the receiver using robust split box cables. Multiple split boxes can be cascaded, allowing large distances to be bridged. Additionally, the channels of an RX2-30K can be expanded to up to 70.

Equipped as standard with input and output sockets as well as connectivity LEDs, it is also available in a cost-effective light version. Since the split box is a passive module that becomes operational only when connected to the receiver, it enables safe preparation for shows.



420 x 70 x 60mm



0,6kg

WS20 ANGLE SHOT

Twenty at Once

This launch device for fireworks offers a professional alternative to improvised setups, making a pyrotechnician's work significantly easier.

Spring steel bracket holders and various cutouts for cable ties are used to secure the fireworks. The standard version is designed for calibers ranging from 30 to 50mm, while alternative versions are available for calibers from 70 to 100mm.



540 x 400 x 190mm



10,2kg



SOFTWARE



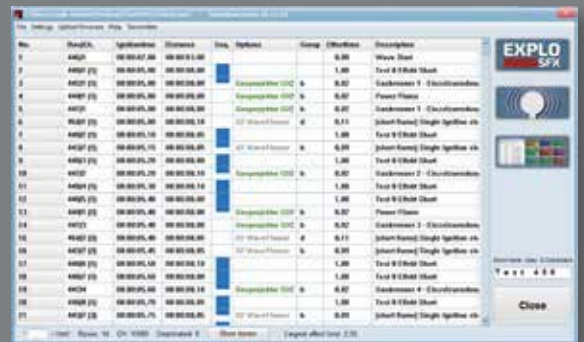
In-House Development of Show Design and Control Software

The development of our product range naturally includes the programming of specialized firmware, control programs, and software designed to create shows.

With user feedback, regular firmware updates are developed, new functions are implemented, and made freely available for download on our website.

To upload these updates to the devices, we provide our in-house software, X2 AutoShow, which manages communication between the PC and the X2 system. This software also allows shows to be sent to the devices, monitored during live operation, and adjusted if necessary, including triggering additional cues via programmable reserve buttons.

For creating shows, we developed the ShowCreator, which enables the realization of music-synchronized automated shows. Additionally, it is possible to import shows from popular programs such as Finale3D, FWSim, or ShowSim and transfer them to the devices using AutoShow.



X2 POWER FLAME



Because Sometimes More Really is More

When you want to ensure that no one misses a climax in a pyro show, the X2 Power Flame delivers an awe-inspiring flame column with a massive fireball reaching up to 15 meters in height. Designed for outdoor shows or very large venues, this effect is powered by standard propane gas, with nitrogen providing the required operating pressure.

The X2 Power Flame can be controlled via the X2 wireless system or using the DMX512 protocol, with both 3-pin and 5-pin connectors available on the device. As with all Explo SFX effect devices, this makes integration into automated shows easy.

To simplify on-site setup, the hose connections are equipped with quick couplings. The included accessories provide everything needed for smooth operation, including all necessary cables and hoses, as well as a pressure regulator and connection system for nitrogen supply.



410 x 410 x 585mm



27,4kg



X2 WAVE FLAME

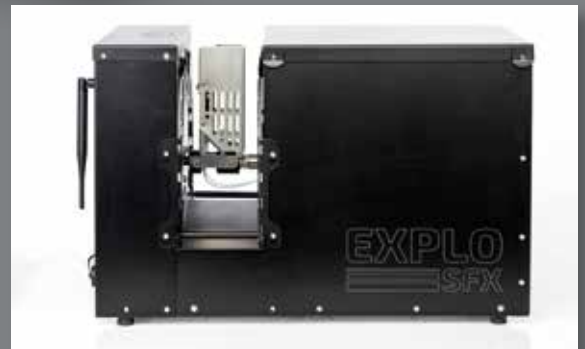


The First of Its Kind and Still the Gold Standard for Dynamic Flame Effects

The X2 Wave Flame has become a staple of large stages and sporting events. With its integrated tank and pump system, it offers a complete solution for spectacular flame shows.

While other systems are limited to fixed effect positions, the X2 Wave Flame can achieve positions within a 210-degree arc at high speed and deliver rapid bursts of fire. One of its most impressive features is the „Wave,“ where a continuous flame burst moves fluidly across the arc. This effect becomes even more striking when multiple X2 Wave Flames are positioned in formation, such as directly behind one another and inverted.

Depending on the application and show requirements, the X2 Wave Flame can be operated with bio-ethanol, Isopar-G/-H/-L/-M, or isopropyl alcohol. Control is provided via DMX512 or the X2 wireless system, whether programmed for an automatic show with music-synchronized effects or operated in manual sequences.



560 x 340 x 370mm



27kg

X2 WAVE FLAME HEAD



Compact and Lightweight for Tripods or Stages

Designed for external fuel supply, the X2 Wave Flame Head offers the advantage of reduced weight and a more compact size. This makes it even easier to mount on tripods or rigs and ideal for stages with particularly limited space.

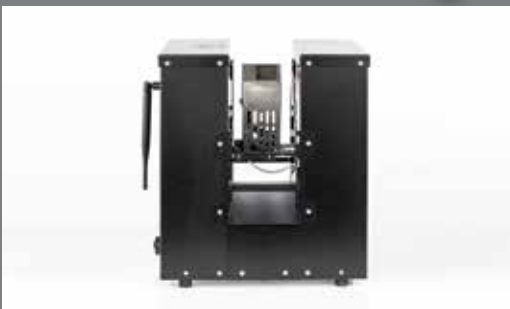
In all other aspects, the effect output and control of the Head match those of the X2 Wave Flame, allowing it to be seamlessly integrated into the same setups.



340 x 330 x 370mm



15,5kg



LIQUID PUMP STATION

Independent Pump System with Internal Tank

The Liquid Pump Station (LPS) has been developed for effect devices that require an external supply of liquid fuel. This unit combines a pump system with an internal tank, making it ideal for powering devices such as the GX2 Liquid or X2 Wave Flame Head.

For quick setup, the device features a quick coupling connection for compatible hoses, ensuring efficient and hassle-free operation.



380 x 340 x 370mm



25kg

GX2 GAS PROJECTOR



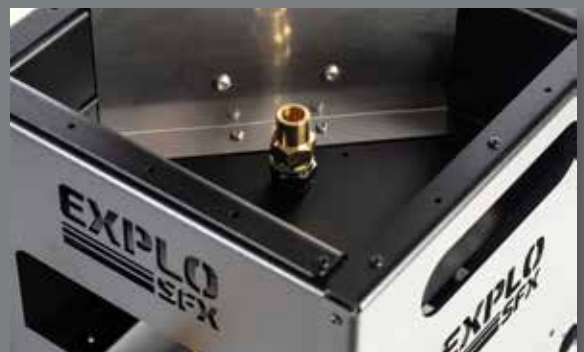
The Workhorse of Flame Effects

The GX2 Gas Projector has been one of the most popular products in our effects device range for years. Its ease of use, robust construction, and reliable performance continue to impress, making it a staple in live shows and productions worldwide, both on stage and on TV.

What truly sets it apart is its versatility. Depending on the configuration, it can operate with gas, liquid propane, aerosol cans, or liquid fuel. A variety of nozzles allows for diverse flame effects to be created.

The GX2 also offers flexible control options. The GX2 12V DMX can be controlled via classic DMX, a 9-80VDC trigger pulse, or optionally with a wireless receiver compatible with the X2 wireless system. Alternatively, the GX2 230V allows flames to be triggered directly via mains voltage, for example, using a DMX switch pack or the RX2-10K 230V receiver.

With its wide range of applications, the GX2 is supported by extensive accessories, including a rain cover, flame wall and torch attachments, and a flight case for safe transport.



260 x 260 x 390mm



6,6kg

GX2 LIQUID



The Version for Liquid Fuels

This specialized version of the GX2 Flame Projector is specifically designed for the safe use of liquid fuels and is powered by an external pump unit, such as the Explo SFX Liquid Pump Station.

The effect height can be adjusted to local requirements by using different nozzles. However, its overall operation and control remain as versatile and straightforward as the base GX2 model.



260 x 260 x 390mm



5,2kg



RX2-1K GAS RECEIVER

Upgrade Option for the GX2 Gas Projector

To connect the GX2 Gas Projector to the X2 wireless system, we offer the RX2-1K GAS Receiver. This receiver is specifically designed for use with GX2 flame projectors.

Thanks to preconfigured sequences, up to 16 of these receivers can be combined, simplifying the use of multiple devices in a single show.



150 x 50 x 70mm



0,3kg



GX2 230V COMPACT



Smaller and More Compact, Yet Just as Effective

The smaller, sleeker sibling of the GX2 230V Gas Projector is designed for locations where size matters. It's ideal for installation in stage floors or mounting on rigs.

Stripped down to the essentials, it is noticeably lighter, while integrated M10 threads in the housing allow for the attachment of truss mounts or similar fixtures.

Like the GX2 230V or the CO2-Jet 230V, it is controlled via mains voltage and can optionally be integrated into the X2 wireless system using the RX2-10K 230V or controlled via a DMX switch pack.

Included as standard is an aerosol adapter with a quick coupling for two aerosol cans. This setup can be extended with additional adapters, allowing for quick swapping of pre-loaded adapters or increased operational duration. Alternatively, a gas hose with the appropriate coupling can be used to connect standard gas cylinders.



200 x 200 x 310mm



4,3kg

SFX TORCH

Grab the Spotlight

The obvious choice for stage performers. This eye-catching device is simple to use yet highly secure, thanks to the dual design of its manual trigger buttons.

Completely cable- and hose-free, it allows for total freedom of movement. It is powered by two standard aerosol cans, which produce a flame of approximately 2.5 meters in length.



560 x 150 x 235mm



3,25kg



FIRE BOWL

A Simple Gas-Powered Solution for a Campfire Feel

Wood-fired fire bowls are always popular in the evening but aren't practical for every location. Our gas-powered alternative is easy to set up and dismantle, produces no ash, and delivers a consistently beautiful flame display.

The wide base with rubber feet ensures stability and can be securely mounted at elevated positions using pre-drilled holes.



595 x 595 x 345mm



9,8kg

CO2-GUN

For When You Need to Let Off Some Steam

The CO2-Gun is an excellent tool for spontaneous show design and audience engagement.

Its lightweight construction and two-handed operation provide precise control over the mist effect. This practical device is powered by liquid CO2 from siphon bottles, connected via a hose fitting.



510 x 60 x 215mm



1,8kg



CO2-JET 230V

Simple, Easy, and Fits Anywhere

The key advantage of CO2 effects, compared to traditional fog machines, is that the mist quickly dissipates instead of lingering in the air and potentially obscuring the view of the stage.

Our most straightforward CO2 device is activated by switching on mains power. Thanks to the IN-OUT configuration of its connections, multiple CO2-Jets can be triggered simultaneously.



210 x 200 x 260mm



2,6kg



CO2-WAVE JET



The Wave of Excitement

This advanced CO2 effect device combines the mist effect of the CO2-Jet with the dynamic motion capabilities of the X2 Wave Flame. Thanks to this combination, the CO2 outlet pipe can rapidly pivot in a 180-degree arc, enabling quick bursts in different directions or creating a sweeping wave effect across the entire range or selected sections of it.

Control is seamlessly integrated into the X2 wireless system but can also be managed via the DMX512 protocol.

To counteract the recoil of the CO2-Jet, the underside of the CO2-Wave Jet is equipped with mounting options for securing it to any surface.

Its compact size and discreet profile make it an excellent additional show element, especially in scenarios where traditional pyrotechnics are not an option.



370 x 310 x 220mm



9,3kg



ACCESSORIES



Optional Equipment for Various Applications

A wide range of accessories is available to enhance and operate your systems effectively.

For instance, protective covers for receivers made of durable, coated stainless steel shield against falling firework debris and serve as an ideal base for magnetic antennas. Or the practical cable manager, designed to bundle and organize cables extending from the receiver.

Effect devices can be equipped with rain covers or stored in flight cases for added protection, easier transport, and convenient storage.

For our gas projector series alone, there's an extensive selection of add-ons, such as adapters for aerosol cans, rain protection covers, or alternative nozzles for different flame effects and applications.

To learn more, visit our website or contact us via email or phone during business hours.



SERVICE & MAINTENANCE

Maintenance and Care: The Key to Reliability

Good service doesn't end with the sale. That's why you can count on Explo SFX as a partner who won't leave you out in the rain.

When it comes to servicing, inspections, or repairs, we're here for you. Regular maintenance ensures your equipment remains reliable for many years to come.

Contact us anytime to schedule an appointment and ensure you're always ready to amaze your audience.



SPECIAL PROJECTS

Do You Have Unique Requirements?

Our extensive experience and flexible approach allow us, unlike many others, to bring even the most unusual projects to life.

From fire-breathing dragons to additional safety features for effect devices, we've had the privilege of creating many exciting custom solutions over the years.

Unique installations like fire blossoms or flames shooting from a motorcycle can only be realized with a solid foundation of communication. Let's make your vision a reality together!





Explo SFX GmbH • Völkermarkter Straße 240 • 9020 Klagenfurt a.W.
www.explo.at • office@explo.at • +43 463 32 245

Imprint | Publisher: Explo SFX GmbH | Layout & Design: Explo SFX GmbH
Images : Explo SFX GmbH, HD-Foto, Pyroterra, Stefan Manzoni, Jaako Manninen,
Christiano Mennucci, David Marschalsky, Tommaso Longari, Thomas Saul, Pavel Fidrmuc,
StudioB and provided by customers
subject to change, mistakes and printing errors