

LUXiBEL

FleXible Entertainment Lighting

CATALOGUE 2025

FLEXIBLE ENTERTAINMENT LIGHTING PRODUCTS ■ LONG LIFE SPAN OF PRODUCTS

DRY HIRE TO SUPPORT CUSTOMERS' INVESTMENTS



www.luxibel.com

Copyright © 2025 - Luxibel Catalogue V1 by AED Distribution NV. Without having any written permission from the editor it is not allowed to copy, reproduce or publish any part of this catalogue, neither in printed form nor by photos or electronic media. All technical specifications are subject to change without notification. We do not assume liability for any incorrect information in this catalogue. No rights can be derived from this catalogue.

Luxibel® is a registered trademark of AED Distribution NV.

Table of contents

Flexible entertainment lighting.....	1
--------------------------------------	---

Expo lights

XFR-140C.....	2
B EXPO100MWW.....	3
B EXPO200MWW.....	4
B EXPO200MCW.....	5
B EXPO350M.....	6
B EXPO500TW.....	7
● XFL-300TW.....	8

Soft lights

XPA-400C.....	9
B PANEL120WW.....	10
B PANEL180TW.....	11
B PANEL240WW.....	12
B PANEL240CW.....	13
B PANEL360TW.....	14

Wash lights

● AURORA.....	16
● AURORA BLAST.....	17
B P9.....	18
B P9Z.....	19

Blinders

B BLINDED1.....	20
B BLINDED.....	21

Pars

B PAR105RGBW V2.....	22
B PAR180RGBW V2.....	23
B PAR180RGBW V2 IP66.....	24
B PAR360Z.....	25

Strobe bars

B BLAST.....	26
B BLAST PRO.....	27

Dollies

● MULTI DOLLY.....	28
DOLLY COVER.....	28

● new products



Flexible entertainment lighting

Luxibel is all about creating lighting that's easy to use and flexible for the entertainment world. Our lights work well in many different situations, making sure our customers get a great product that's worth their investment.

Our products are perfect for a wide range of applications, including Film & Television, Architainment, Theatre/ House of Worship, Live Entertainment, and even Exhibition/Museum/Retail settings. The 'X' in Luxibel represents this incredible versatility.

Our products originate from our Belgian R&D center, ensuring top quality through rigorous control

both in manufacturing and at our headquarters. Emphasizing durability, we offer long-term value enhanced by AED group's dry hire support, maximizing investment returns for our clients.

With a global reach, Luxibel maintains a personal approach, understanding and meeting the unique needs of clients worldwide. We're more than a lighting company; we're a partner in creating extraordinary entertainment experiences.



Theatre / House of Worship



Film & Television



Architainment



Exhibition / Museum / Shop



Live Entertainment

XFR-140C

RGBL
CRI > 90
High-power
Compatible with B EXPO100



XFR-140C



SMALL, HIGH-POWER, FULL COLOR LED FRESNEL

The XFR-140C is a compact but powerful RGBL fresnel light with an adjustable zoom from 21° to 85° and a 4-leaf barndoor. The fixture has the capacity to go full color but is also designed to match the white color temperatures of the Luxibel B EXPO 100MWW, 200MWW and 200MCW

utilizing its 6 DMX modes. The fresnel now includes a convenient USB slot for software updates, simplifying the process for up to 10 DMX-linked fixtures simultaneously. Another novelty of the fixture is the calibrated LEE filter library with various common colors in the industry.

Features



Optional
white cover kit



4-leaf barndoor



Manual zoom
21°-85°



OLED display



One-hand tilt
locking system

Accessories

Included: doublelatched 4-leaf barndoor with safety, powerCON True1 M/F connectors

Optional: n/a



120W
LED RGBL engine



21°-85°
manual zoom



92 Ra



LEE filter
color bank



Low Voltage
Input



USB firmware
updates



120W
AC 100V - 240V



298 x 327 x 271 mm
11.7 x 12.9 x 10.7 in



5,48 kg
12.08 lbs

B EXPO100MWW

High CRI
Warm white
High-output



B EXPO100MWW

100W WARM WHITE FRESNEL



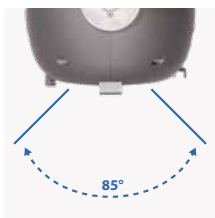
The B EXPO100MWW fresnel light is optimized for small spaces, delivering a 100W high CRI warm white light in a compact form factor. Its beam angle is adjustable from 21° to 85°, offering versatile lighting options from focused spots to wide washes. Designed with a user-friendly

interface, the B EXPO100MWW includes a 4-button LCD display for easy settings adjustments. A safety eye for secure rigging, silent mode operation and 16-bit dimming make it suitable for quiet environments that require high precision, such as theaters and studios.

Features



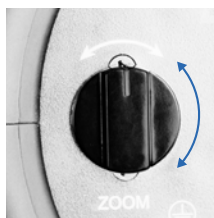
Optional
white cover kit



85° wide angle



Optional
4-leaf barn door



Manual zoom
21°-85°



OLED display



One-hand tilt
locking system

Accessories

Included: XLR 5-pin, safety wire, powerCON True1

Optional: B BARN100, B FILTER100



100W
3.000K



21°-85°
manual zoom



97.4 Ra



XLR 5-pin



1/4/5 ch



100W
AC 100V - 240V



298 x 327 x 271 mm
11.7 x 12.9 x 10.7 in



4,28 kg
9.4 lbs

B EXPO200MWW

High CRI
Warm white
High-output



B EXPO200MWW

200W WARM WHITE FRESNEL



The B EXPO200MWW provides a high-power lighting solution with its warm white fresnel design, ideal for professional settings like studios and churches. It features 16-bit dimming and a safety eye for precise lighting control and secure installation. Renowned for its strong beam and

quality light, the B EXPO200MWW meets the rigorous standards of lighting professionals, ensuring reliable performance across various applications.

Features



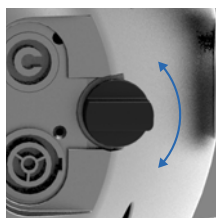
Optional
white cover kit



Double glass
optics



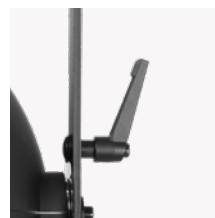
Optional
12-leaf barn door



Manual zoom
15°-45°



OLED display



One-hand tilt
locking system

Accessories

Included: XLR 5-pin, safety wire, powerCON True1

Optional: B EXPO Easy barndoor, B EXPO Barndoor, B EXPO Filter



200W
3.000K



15°-45°
manual zoom



94 Ra



XLR 5-pin



1/4/5 ch



200W
AC 100V - 240V



467 x 404 x 320 mm
18.4 x 15.9 x 12.6 in



10,9 kg
24 lbs

B EXPO200MCW

High CRI
Cold white
High-output



B EXPO200MCW

200W COLD WHITE FRESNEL

The B EXPO200MCW is a versatile fresnel light offering high-power cold white illumination, suitable for challenging lighting environments including TV and film production. It comes with a safety eye and 16-bit dimming capabilities for enhanced operational precision. This model's

powerful output and high-quality light are designed to address the needs of seasoned professionals, providing a dependable and flexible lighting tool for a wide range of creative applications.



Features



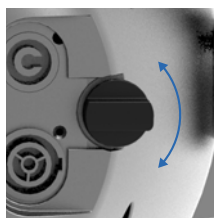
Optional
white cover kit



Double glass
optics



Optional
12-leaf barn door



Manual zoom
15°-45°



OLED display



One-hand tilt
locking system

Accessories

Included: XLR 5-pin, safety wire, powerCON True1

Optional: B EXPO Easy barndoor, B EXPO Barndoor, B EXPO Filter



200W
5.600K



15°-45°
manual zoom



94 Ra



XLR 5-pin



1/4/5 ch



200W
AC 100V - 240V



467 x 404 x 320 mm
18.4 x 15.9 x 12.6 in



10,9 kg
24 lbs

B EXPO350M

High CRI
High-output
Warm/Cold white



B EXPO350M

350W WARM / COLD WHITE FRESNEL



The B EXPO350M stands as a premium choice for fresnel lighting, catering to diverse environments such as theaters, studios, and retail spaces. Its silent operation and 16-bit dimming ensure precise and quiet light control, making it ideal for settings where noise minimization is crucial.

This fixture combines power with flexibility, offering an OLED display for settings adjustments and maintaining dimming settings during power interruptions, making it a dependable and user-friendly lighting solution for professionals.

Features



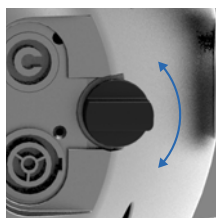
Optional
white cover kit



Double glass
optics



Optional
12-leaf barn door



Manual zoom
15°-45°



Extra
LED chip and lens



One-hand tilt
locking system

Accessories

Included: XLR 5-pin, safety wire, warm white LED, condenser lens, powerCON True1

Optional: B EXPO Easy barndoor, B EXPO Barndoor, B EXPO Filter, white cover kit



350W
3.000K (WW) | 5.600K (CW)



15°-45°
manual zoom



97.4 Ra (WW)
95.8 Ra (CW)



XLR 5-pin



1/4/5 ch



320W
AC 100V - 240V



467 x 404 x 320 mm
18.4 x 15.9 x 12.6 in



10,9 kg
24 lbs

B EXPO500TW

High CRI
High-power
Tunable white
Automated zoom



B EXPO500TW



HIGH CRI FRESNEL WITH AUTOMATED ZOOM

The B EXPO500TW sets new standards for fresnel lighting with its high CRI and tunable white LED technology, ensuring consistent and high-quality light output for shops, exhibitions, and places of worship. Automated zoom and a user-friendly OLED display enhance operational efficiency and

precision. Silent mode operation and DMX/RDM compatibility make the B EXPO500TW a versatile tool for producing the perfect ambiance, providing lighting designers with the flexibility and control needed for intricate lighting setups.

Features



Optional
white cover kit



Double glass
optics



Optional
12-leaf barn door



Push to enter
turn button



One-hand tilt
locking system



2.700K - 6.200K

Accessories

Included: XLR 5-pin, safety wire, powerCON True1

Optional: B EXPO Easy barn door, B EXPO Barn door, B EXPO Filter, white cover kit



500W
2.700K - 6.200K



21°-55°
motorized zoom



97.4 Ra



XLR 5-pin



3/4/7 ch



300W
AC 100V - 240V



467 x 404 x 320 mm
18.4 x 15.9 x 12.6 in



11 kg
24.3 lbs

XFL-300TW

IP66

CRI > 95

High-power

Strong aluminium housing

4 color temperature preset buttons



XFL-300TW

TUNABLE WHITE FLOODLIGHT



The XFL-300TW is a top tier high CRI floodlight, offering durability with its IP66 rating and versatility with preset color temperatures for different applications. Its design facilitates easy installation and transportation, making it an efficient choice for both temporary and permanent setups.

Serving as a modern alternative to traditional floodlights, the XFL-300TW achieves full brightness instantly, providing a reliable and energy-efficient lighting solution for exhibitions, festivals, and architectural elements.

Features



Powercable in-out



4 color temperature preset buttons



One-hand tilt locking system



2800K - 6000K

- Silent, no fans
- High-CRI
- Extremely high and stable output
- EU (CE), UK (UKCA)



320x 2W
TW LED



55°
plano convex lens



95 Ra



IP66



300W
AC 100V - 240V



497 x 416 x 63 mm
19.6 x 16.4 x 2.5 in



7,8 kg
17.1 lbs

XPA-400C

CRI > 95

High-output

Calibrated LEE filter color bank

8 color temperature preset buttons

Unique RGB LED with warm white, lime & cyan



XPA-400C

MULTI-COLOR SOFTLIGHT

The XPA-400C is a compact yet high-powered RGBWWLC LED panel. It features an intuitive control interface, including a 4-button menu and an LCD display for easy navigation. It also features an 8-button programmable manual CCT bank and 3 versatile rotary/push buttons for precise manual adjustments. A highlight of

the XPA-400C is its calibrated LEE filter library, which incorporates over 60 popular colors. The firmware can be conveniently updated via USB, allowing for simultaneous updates in up to 10 DMX linked devices. The fixture offers 9 DMX Modes, which include 3 B EXPO100MWW compatibility modes.



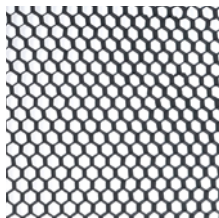
Features



12-leaf barndoor



Diffuser & intensifier



Honeycomb
30° and 60°



Pole operated yoke



2800K - 10000K



8 CCT preset
buttons

Accessories

Included: diffuser, spigot, 12-leaf barndoor with safety, omega bracket, powerCON True1

Optional: intensifier, pole operated yoke, honeycomb 30°, honeycomb 60°



380W
RGBWWLC LED



140°



96 Ra



380W
AC 100V - 240V



LEE filter
color bank



Low Voltage
Input



USB firmware
updates



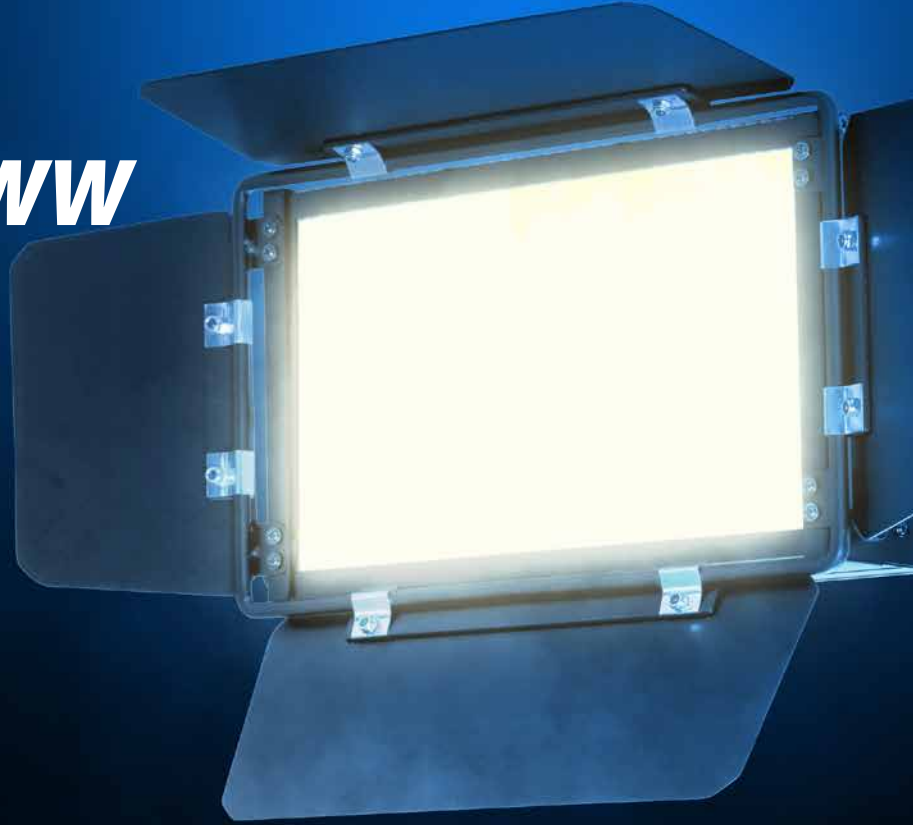
405 x 129 x 418 mm
16 x 5.1 x 16.5 in



12,8 kg
28.2 lbs

B PANEL120WW

High CRI
Warm white
High-output



B PANEL120WW

WARM WHITE LED SOFT LIGHT



The B PANEL120WW offers great versatility and performance as a compact warm white soft light, perfect for TV productions, theater settings, and photography sessions. Its array of features includes barn doors, a removable frost and gel frame for light shaping, and manual or DMX control for brightness adjustment.

Equipped with an adjustable refresh rate to ensure flicker-free operation, the B PANEL120WW is an essential tool for professionals seeking a reliable and versatile lighting solution. Its design and functionality make it well-suited for a wide range of indoor applications.

Features



Barn door



Removable frost, intensifier, gel frame



Manual dimming button



Optional DoPchoice snapbag + grid (40°)

Accessories

Included: barn door (fixed), filter frame, soft frost, intensifier, powerCON True1

Optional: B SNAP120, B GRID120



120x 1W SMD LED
2.700K



160°



95.8 Ra



XLR 5-pin



1/2/3 ch



85W
AC 100V - 240V



331 x 238 x 114 mm
13.03 x 9.37 x 4.49 in



4.6 kg
10.14 lbs

B PANEL180TW

High CRI
High-output
Tunable white



B PANEL180TW

TUNABLE WHITE SOFT LIGHT



Featuring a broad spectrum of white light from 2700K to 6000K, the B PANEL180TW is the ultimate compact and versatile tunable soft light for various lighting needs. Easy-to-use turn buttons enable precise manual adjustments for dimming and color temperature, making it ideal for settings requiring customizable

lighting solutions that are fast and easy to set up. The addition of the battery input not only makes the B PANEL180TW portable, but enhances its reliability and expands its flexible use-cases to include emergency lighting or mobile applications. Additionally, its top-tier accessories expand its capabilities even further.

Features



Barn door



Removable frost, intensifier, gel frame



Dimming & CCT buttons



Optional DoPchoice snapbag + grid (40°)

Accessories

Included: barn door (fixed), filter frame, soft frost, intensifier, powerCON True1

Optional: B SNAP120, B GRID120



180x 1W SMD LED
2.700K - 6.000K



120°



94.8 Ra



XLR 5-pin



2/3/6/8 ch



85W
AC 100V - 240V



Low Voltage
Input



331 x 238 x 114 mm
13.03 x 9.37 x 4.49 in



4,8 kg
10.14 lbs

B PANEL240WW

High CRI
Warm white
High-output



B PANEL240WW



240X LED WARM WHITE STUDIO PANEL



The B PANEL240WW is designed to cater to the needs of professionals seeking a warm white soft light solution, equipped with 240 white SMD LEDs that ensure a bright and uniform light output. With a high CRI of 95.8, it guarantees vivid and true-to-life colors, making it ideal for

environments where light quality is paramount. This fixture offers flexibility with 16-bit dimming and a flicker-free high refresh rate, ideal for video applications. The fanless design ensures silent operation, enhancing its suitability for studios and theaters where noise control is essential.

Features



Barn door



Removable frost, intensifier, gel frame



Dimming & CCT buttons



Optional DoPchoice snapbag + grid (40°)

Accessories

Included: barn door (fixed), filter frame, soft frost, intensifier, powerCON True1

Optional: B SNAP240, B GRID240



240x 1W SMD LED
2.700K



160°



95.8 Ra



XLR 5-pin



1/2/3 ch



120W
AC 100V - 240V



526 x 316 x 125 mm
20.71 x 12.44 x 4.92 in



8 kg
17.63 lbs

B PANEL240CW

High CRI
Cold white
High-output



B PANEL240CW



240X LED COLD WHITE STUDIO PANEL



The B PANEL240CW shines as a cold white soft light solution, boasting 240 white SMD LEDs for high-quality, accurate color rendition in theaters, studios, and photography. With a high CRI of 96 and 16-bit dimming, it offers great brightness control and

a fan-free design for silent operation. This fixture is particularly designed for applications where clear, bright illumination is key, supported by a cold white 5000K temperature for a vivid and clear ambiance, making it a top choice for professionals.

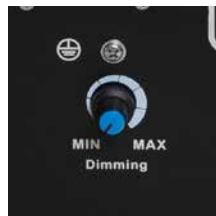
Features



Barn door



Removable frost,
intensifier, gel frame



Dimming & CCT
buttons



Optional DoPchoice
snapbag + grid (40°)

Accessories

Included: barn door (fixed), filter frame, soft frost, intensifier, powerCON True1

Optional: B SNAP240, B GRID240



240x 1W SMD LED
5.000K



160°



95.8 Ra



XLR 5-pin



1/2/3 ch



120W
AC 100V - 240V



526 x 316 x 125 mm
20.71 x 12.44 x 4.92 in



8 kg
17.63 lbs

B PANEL360TW

High CRI
High-output
Tunable white



B PANEL360TW

TUNABLE WHITE SOFT LIGHT



The B PANEL360TW emerges as a state-of-the-art tunable white soft light, offering a vast range of white light from 2700K to 6200K to meet various lighting demands. It features easy dimming and CCT adjustments through user-friendly controls, making it a versatile choice for TV, theatre,

and photography. Compatibility with several top notch accessories further extends its utility, allowing for creative and precise lighting setups. With a high CRI, it ensures that the light output remains consistent and of high quality across all settings.

Features



Barn door



Removable frost, intensifier, gel frame



Dimming & CCT buttons



Optional DoPchoice snapbag + grid (40°)

Accessories

Included: barn door (fixed), filter frame, soft frost, intensifier, powerCON True1

Optional: B SNAP240, B GRID240



360x 1W SMD LED
2.700K - 6.200K



160°



94.8 Ra



XLR 5-pin



2/3/6/8 ch



360W
AC 100V - 240V



526 x 320 x 150 mm
20.71 x 12.6 x 5.9 in



8,6 kg
18.9 lbs



AURORA

Designed for effortless precision
Brilliant illumination across any distance
Optimal adaptability with 3 cooling modes



AURORA

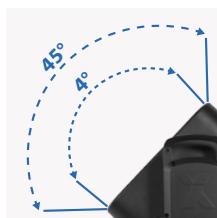


32X 40W LED RGBW WASH LIGHT

The AURORA luminaire redefines professional lighting with 32 high-performance 40-watt RGBW LEDs, delivering vibrant, immersive illumination. Boasting a CRI of 93+, it ensures exceptional color fidelity for live performances and on-camera use. Its motorized 4° to 45° zoom, motorized 200° tilt and adjustable

color temperature (2.800K – 8.000K) provide unmatched precision and versatility. With an IP65 rating for indoor or outdoor use, the AURORA also features single dot control for a wide variety of light design, offering creative freedom and reliability in any setting.

Features



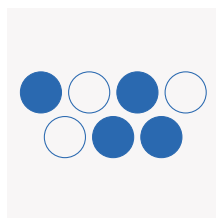
Motorized zoom
4°-45°



Motorized tilt
200°



Stackable
up to 4 fixtures



Single dot control



2.800K - 8.000K

Accessories

Included: 2x omega bracket, powerCON True1 M/F connectors, safety wire

Optional: baseplate, stacking set



32x 40W RGBW



LEE filter
color bank



>93 Ra



IP65



2.800 - 8.000K



1.700W
AC 110V - 230V



520 x 410 x 201 mm
20.5 x 16.1 x 7.9 in



20,4 kg
44.97 lbs

AURORA BLAST

Dynamic effects with strobe bar
Designed for effortless precision
Brilliant illumination across any distance
Optimal adaptability with 3 cooling modes



AURORA BLAST



22X 40W LED RGBW WASH LIGHT WITH STROBE BAR

The AURORA BLAST combines 22 high-performance 40-watt RGBW LEDs with 144 5-watt CW LEDs for rich washes and intense strobes. Its IP65-rated construction thrives in demanding environments, while single dot LED control and a segmented strobe bar with 12 controllable zones enable dynamic, thrilling designs. With

versatile cooling modes (Silent, High, Auto), a motorized 4° to 45° zoom and a motorized 200° tilt, it adapts seamlessly to any creative vision. The AURORA BLAST's stackable configuration allows for multi-dimensional displays, making it a powerful tool for groundbreaking lighting applications.

Features



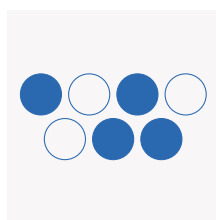
Motorized zoom
4°-45° (2 segments)



Motorized tilt
200°



Stackable
up to 4 fixtures



Single dot control



2.800K - 8.000K

Accessories

Included: 2x omega bracket, powerCON True1 M/F connectors, safety wire

Optional: baseplate, stacking set



22x 40W RGBW
144x 5W CW



LEE filter
color bank



>93 Ra



IP65



2.800 - 8.000K



1.700W
AC 110V - 230V



520 x 410 x 201 mm
20.5 x 16.1 x 7.9 in



23,1 kg
50.93 lbs

B P9



IP65

High-output

Vertically and horizontally arrayable



B P9



36X 15W LED RGBW WASH LIGHT

The Luxibel B P9 is a dynamic RGBW wash light designed for impactful lighting across large surfaces. Its 36x15W LEDs and fixed 25° beam angle deliver consistent and vibrant lighting. The adaptability of its bracket design allows for various configurations, enhancing its application in diverse setups. Its quality half-diffuser and

grid accessories further expand on its flexibility. Constructed from durable materials, the B P9 is designed for longevity and versatility, making it suitable for both indoor and outdoor use. Its design focuses on delivering quality wash lighting, catering to events and installations requiring high-quality illumination.

Features



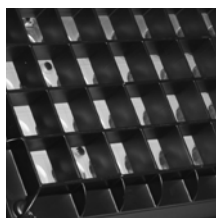
Color display



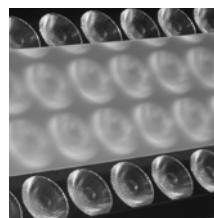
Angle degree indicator



Multipurpose bracket



Magnetic honeycomb



Half diffuser

Accessories

Included: magnetic honeycomb, half diffuser, 2x omega bracket, powerCON True1

Optional: B P9 FILTER 10°-60°, B P9 FILTER 40°, flight case



36x 15W RGBW



25°



XLR 5-pin



2/4/16/22 ch



IP65



460W
AC 100V - 240V

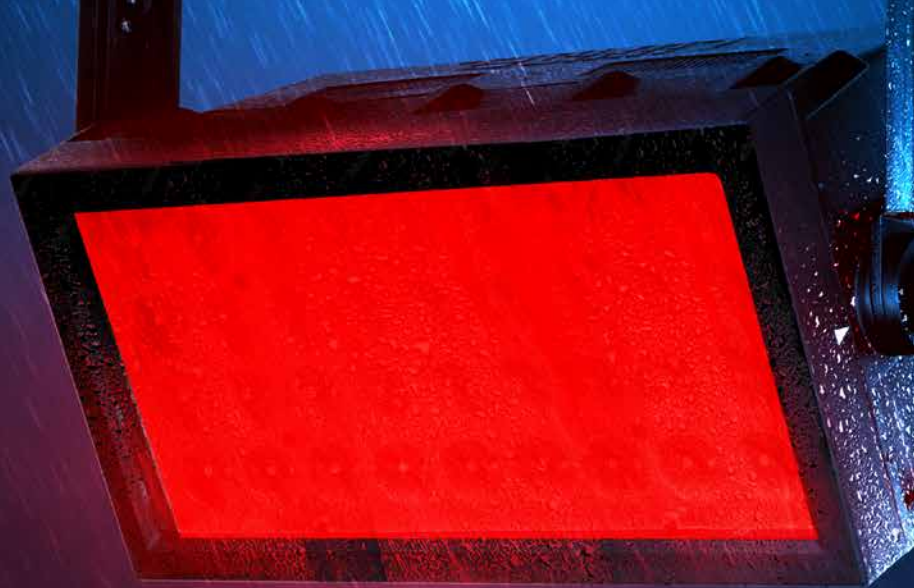


512 x 275 x 244 mm
20.1 x 10.8 x 9.6 in



15,7 kg
34.6 lbs

B P9Z



IP65
High-output
Quick motorized zoom



B P9Z



36X 15W LED RGBW WASH LIGHT WITH QUICK ZOOM

The Luxibel B P9Z distinguishes itself with high-power RGBW LEDs and advanced features like automated zoom, making it ideal for illuminating large areas with intense colors and smooth dimming. Its design facilitates easy mounting and flexible configuration, allowing for creative lighting solutions in buildings, walls,

and outdoor landscapes. Durability and performance are at the core of the B P9Z's design, offering reliability in both temporary and permanent installations. The inclusion of a flexible bracket and robust construction materials ensures that it stands up to the demands of outdoor events and architectural lighting.

Features



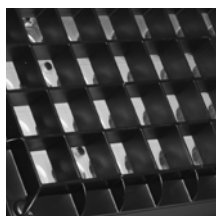
Color display



Angle degree
indicator



Multipurpose
bracket



Magnetic
honeycomb

Accessories

Included: magnetic honeycomb, 2x omega bracket, powerCON True1

Optional: flight case



36x 15W RGBW



7°-58°
motorized zoom



XLR 5-pin



3/5/17/24 ch



IP65



500W
AC 100V - 240V



512 x 326 x 244 mm
20.1 x 12.8 x 9.6 in



16,9 kg
37.3 lbs

B BLINDED1



IP65

Flicker-free LED

Warm White with Amber drift



B BLINDED1



125W LED WARM WHITE STAGE BLINDER WITH AMBER DRIFT

The Luxibel B BLINDED1 redefines stage lighting with its single blinder setup, powered by a 125W LED that delivers both warm white and amber drift. Ideal for creating an enchanting atmosphere on stage, it features advanced tungsten emulation technology, offering the charm of traditional lighting with modern

efficiency. Designed to withstand diverse weather conditions with an IP65 rating, the B BLINDED1 combines durability with performance, making it a versatile choice for both indoor and outdoor events. Its compact yet powerful output ensures a captivating presence, making it an essential addition to any lighting setup.

Features



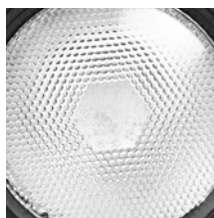
OLED display



Optional filter frame and barn door



Double and quick lock omega bracket



Glass optics

Accessories

Included: omega bracket, powerCON True1

Optional: B FBDBLINDED1



125W flicker-free
CREE LED



50°



81.9 Ra



XLR 5-pin



1/2/4 ch



IP65



115W
AC 100V - 240V



247 x 234 x 150 mm
9.7 x 9.2 x 5.9 in



3,4 kg
7.5 lbs

B BLINDED



Flicker-free LEDs
Warm White with Amber Drift
Vertically and horizontally arrayable

B BLINDED



2X 125W LED WARM WHITE STAGE BLINDER WITH AMBER DRIFT



Presenting the Luxibel B BLINDED, a versatile lighting solution equipped with dual 125W warm white LEDs with amber drift, providing a powerful alternative to traditional DWE blinders. Its beautiful tungsten emulation allows for the richest warm amber colors, enhancing any stage setup. This fixture simplifies

installation with its built-in dimmers. Capable of configuring into various blinder arrangements and matrices, the B BLINDED offers creative flexibility for designers, ensuring a bright and flicker-free performance with its high refresh rate. Ideal for concerts and theatrical productions, it brings a powerful glow to any event.

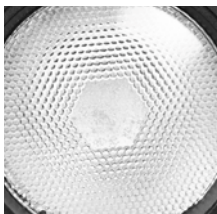
Features



Arrayable



15° tilt



Glass optics



Quick mounting system

Accessories

Included: hanging bracket, 4x mounting pins with safety wire, powerCON True1

Optional: single and double bracket



2x 125W flicker-free
CREE LED



50°



81.9 Ra



XLR 5-pin



1/2/4/6/8 ch



235W
AC 100V - 240V



400 x 220 x 205 mm
15.7 x 8.7 x 8.1 in



6,2 kg
13.7 lbs

B PAR105RGBW V2

IP65

Tophat included

Unique power-to-size ratio



B PAR105RGBW V2

7X 15W RGBW LED PAR

The B PAR105RGBW V2 LED light packs a powerful punch with its 7x15W RGBW LEDs, offering vibrant colors and smooth dimming in a compact form. This fixture stands out in the professional market for its efficiency and ease of control, supported by a master-slave program function and compatibility with NX34/30V truss



systems. Its exceptional power-to-size ratio makes it a top choice for lighting professionals seeking performance and versatility. The B PAR105RGBW V2 ensures a seamless and hassle-free setup, making it a valuable asset for enhancing the atmosphere of any venue.

Features



Gridded tophat



Double bracket



Color display



One hand tilt locking system

Accessories

Included: omega bracket, B TOPHAT105 gridded, powerCON True1

Optional: B TOPHAT105 (half or open), B PAR105 FILTER (25°, 40° or 10°-60°)



7x 15W SMD LED
RGBW 4 in 1



15°



XLR 5-pin



4/6/8/9/15 ch



IP65



96W
AC 100V - 240V



219 x 225 x 133 mm
8.6 x 8.8 x 5.2 in



3,3 kg
7.3 lbs

B PAR180RGBW V2



IP65

Tophat included

Unique power-to-size ratio



B PAR180RGBW V2

12X 15W RGBW LED PAR



The B PAR180RGBW V2 elevates lighting design with its 12x15W RGBW LEDs, delivering rich colors and precise dimming capabilities. Its standout feature is the exceptional power-to-size ratio, making it a formidable choice in the AV market. Equipped with a built-in humidity extractor and an IP65 rating, it promises durability

and consistent performance. AED Rent's support with an extensive inventory for dry hire, along with specially designed accessories, underscores the B PAR180RGBW V2's suitability for professional settings, offering unparalleled lighting quality and versatility.

Features



Gridded tophat



Double bracket



Color display



One hand tilt locking system

Accessories

Included: omega bracket, B TOPHAT180 gridded, powerCON True1

Optional: B TOPHAT180 (half or open), B PAR180 FILTER (40° or 10°-60°)



12x 15W SMD LED
RGBW 4 in 1



25°



XLR 5-pin



4/6/8/9/15 ch



IP65



165W
AC 100V - 240V



280 x 288 x 143 mm
11 x 11.3 x 5.6 in



4,7 kg
10.4 lbs

B PAR180RGBW V2 IP66



IP66

Tophat included

Unique power-to-size ratio



B PAR180RGBW V2 IP66



12X 15W RGBW LED WATERPROOF PAR

The B PAR180RGBW V2 IP66 LED par light sets a new standard for outdoor lighting, featuring a 12x15W RGBW LED engine that delivers vibrant, intense colors. Its IP66 rating and durable waterproof connectors ensure it can withstand the elements, making it an ideal choice for outdoor events and architectural lighting.

With its robust features, this LED par provides consistent, spectacular performance, enhancing any setting with rich, colorful illumination. The B PAR180RGBW V2 IP66 represents the pinnacle of versatility and reliability in outdoor lighting solutions, designed to meet the rigorous demands of professional applications.

Features



Gridded tophat



Double bracket



Color display



One hand tilt locking system

Accessories

Included: omega bracket, B TOPHAT180 gridded, powerCON True1

Optional: B TOPHAT180 (half or open), B PAR180 FILTER (40° or 10°-60°)



12x 15W SMD LED
RGBW 4 in 1



25°



XLR 5-pin



4/6/8/9/15 ch



IP66



165W
AC 100V - 240V



280 x 288 x 143 mm
11 x 11.3 x 5.6 in



5 kg
11.2 lbs

B PAR360Z



IP65
High-output
Fast motorized zoom



B PAR360Z

7X 60W RGBW LED ZOOM PAR



The B PAR360Z redefines the standards for IP-rated zoom pars with its 7x60W RGBW LED engine, capable of producing captivating colors and brilliant illumination. This fixture is distinguished by its rapid zoom capability and high saturation colors, providing dynamic lighting options for events and productions.

With a strong power-to-size ratio, the B PAR360Z offers creative freedom in designing lighting setups, ensuring that it can meet the demands of professionals looking for impactful and versatile lighting solutions. Its high output and adaptability make it an essential tool for elevating lighting designs.

Features



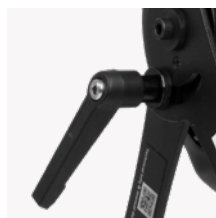
Quick zoom
4.3°-45°



Diffuser lens
for color mix



Molded zoom lens



One hand tilt
locking system

Accessories

Included: omega bracket, frost filter, powerCON True1

Optional: n/a



7x 60W SMD LED
RGBW 4 in 1



4.3°-45°
motorized zoom



XLR 5-pin



5/8/12/17 ch



IP65



375W
AC 100V - 240V



450 x 297 x 217 mm
17.7 x 11.7 x 8.5 in



6,9 kg
15.2 lbs

B BLAST



High-output

120x 3W CW LEDS mappable per 4

120x 0.3W RGB LEDS individually mappable

B BLAST



HIGH-OUTPUT CW STROBE BAR WITH RGB PIXELS



The Luxibel B BLAST, a dynamic strobe bar, brings vibrant and engaging visual effects to clubs, bars, and DJ booths. Featuring 120x3W Cool White and 0.3W RGB LED bulbs, it combines striking strobe effects with captivating RGB pixels for an immersive atmosphere. Its design supports

extended, continuous lighting effects with easy integration into existing setups, thanks to Art-Net™, sACN, and DMX protocol compatibility. The B BLAST's extended mode allows for individual RGB pixel control, offering a broad palette for creative lighting designs.

Features



Built-in
collinear coupler



RJ45 in-out
ArtNet & sACN



Multifunctional
LED display



Individual
pixel-mapped



Bracket included

Accessories

Included: collinear coupler, bracket, powerCON True1 (bare end)

Optional: n/a



120x 3W LED CW
120x 0.3W LED strobe



90° CW fixed
120° RGB fixed



2x XLR 5-pin
2x etherCON



5/10/36/52/126/390/400 ch



600W
AC 100V - 240V



1.060 x 80 x 120 mm
41.7 x 3.2 x 8.3 in



7,8 kg
17.2 lbs

B BLAST PRO



IP65

High-output

120x 5W CW LEDS mappable per 4

120x 0.6W RGB LEDS individually mappable

B BLAST PRO



HIGH-OUTPUT CW STROBE BAR WITH RGB PIXELS



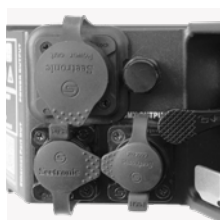
Experience the power of the Luxibel B BLAST PRO, an IP65-rated strobe bar designed for eye-catching lighting effects in any setting. Equipped with 120x 5W Cool White and 120x 0.6W RGB LEDs, it delivers stunning colors and powerful strobes that remain impactful during the day or night. Its innovative locking system allows for

creative positioning, while a variety of bracket accessories enhance shaping and mounting possibilities. Because of its compatibility with Art-Net™, sACN, and DMX protocols, the B BLAST PRO integrates seamlessly into any professional lighting setup, making it a versatile and powerful tool for creating dynamic lighting effects.

Features



Easy horizontal +
vertical locking



RJ45 in-out
ArtNet & sACN



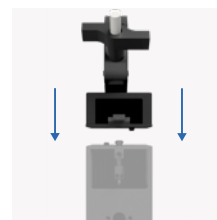
Multifunctional
LED display



Individual
pixed-mapped



2x tilt, 1x shape
brackets



B BRACKET PRO

Accessories

Included: brackets (B BRACKET PRO, 2x tilt, 1x shape , 2x omega), cables (etherCON, XLR 5-pin, powerCON True1)

Optional: 2x floorstand bracket, frost filter white/black



120x 5W LED CW
120x 0.6W LED RGB



90° CW fixed
120° RGB fixed



IP65



2x XLR 5-pin
2x etherCON



5/10/36/52/126/390/400
ch



800W
AC 100V - 240V



1.070 x 85 x 238 mm
42.1 x 3.3 x 9.37 in



11.1 kg
24.5 lbs



MULTI DOLLY

PRE-RIG, PRE-PRODUCTION AND TRANSPORT DOLLY SYSTEM

The MULTI DOLLY, presented by Luxibel is a revolutionary pre-rig, pre-production and transport dolly system. The foundation of this dolly is a black frame, useable in combination with Tente wheels on the side or on the bottom. The frame can therefore be used in multiple set-ups. It can be used horizontally or vertically in combination with standard NX34 square truss, standard size, or with solo tubes.

Compatible with:

- Tente wheels
- NX34 truss
- Solo tube



DOLLY COVER

RAIN AND DUST PROTECTION FOR TRANSPORT DOLLIES

Rain and dust protection for transport dollies. Introducing the ultimate solution to safeguard your light fixtures and equipment from dust and sand, and from unpredictable weather conditions. Its transparent design on the front and back allows for visibility, making it easy to identify gear on the job without having to remove the cover. Two sizes are available: standard size and half size. Both feature convenient zippers that ensure quick and easy access to your equipment. The tall cover is also compatible with the MULTI DOLLY.

Two cover sizes available:

- 1600 x 850 x 600 mm (WxHxD)
- 1600 x 1850 x 600 mm (WxHxD):
Compatible with MULTI DOLLY







www.luxibel.com

AED Distribution NV

Bedrijvenpark De Veert 13/004, 2830 Willebroek, Belgium
+32 3 860 76 50 | info@luxibel.com