

SÖL I BLINDER ACCESSORIES



SÖL I BLINDER FRAME



Fresnel Lens



Bowens Adapter



Frosted Dome Lens



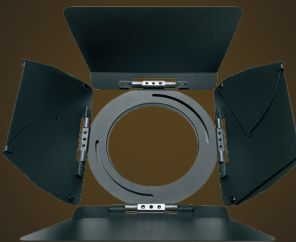
Blackout Lens



Frosted Lens



Gel Frame Holder Kit



Barndoor



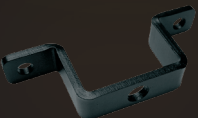
Heavy Duty Yoke



M10 Connect



Interconnect



Rear Mount Bracket



Power & DMX Jumper Cable



Product Overview

SÖL I BLINDER	SÖL II BLINDER	SÖL IV BLINDER
<b>SOURCE</b> <ul style="list-style-type: none"><li>• 250W RGBLAW LED Engine</li><li>• 30,000 Hour Average LED Life*</li></ul>	<b>SOURCE</b> <ul style="list-style-type: none"><li>• 2x 350W RGBLAW LED Engine</li><li>• 30,000 Hour Average LED Life*</li></ul>	<b>SOURCE</b> <ul style="list-style-type: none"><li>• 4x 350W RGBLAW LED Engine</li><li>• 30,000 Hour Average LED Life*</li></ul>
<b>PHOTOMETRIC DATA</b> <ul style="list-style-type: none"><li>• 9182 Total Lumen Output</li><li>• CRI 95.5</li></ul>	<b>PHOTOMETRIC DATA</b> <ul style="list-style-type: none"><li>• 30750 Total Lumen Output</li><li>• CRI 95.5</li></ul>	<b>PHOTOMETRIC DATA</b> <ul style="list-style-type: none"><li>• 59830 Total Lumen Output</li><li>• CRI 95.5</li></ul>
<b>EFFECTS</b> <ul style="list-style-type: none"><li>• Variable Strobe Rate: 1- 20Hz</li><li>• Dim-to-Warm/ Red Shift Emulation</li></ul>	<b>EFFECTS</b> <ul style="list-style-type: none"><li>• Variable Strobe Rate: 1- 20Hz</li><li>• Dim-to-Warm/ Red Shift Emulation</li></ul>	<b>EFFECTS</b> <ul style="list-style-type: none"><li>• Variable Strobe Rate: 1- 20Hz</li><li>• Dim-to-Warm/ Red Shift Emulation</li></ul>
<b>COLOR</b> <ul style="list-style-type: none"><li>• ColourTune Technology</li><li>• RGBLAW Color Array</li><li>• CMY Emulation</li><li>• Variable CCT 1,800K - 8,500K</li><li>• Virtual Gel Swatch Book</li></ul>	<b>COLOR</b> <ul style="list-style-type: none"><li>• ColourTune Technology</li><li>• RGBLAW Color Array</li><li>• CMY Emulation</li><li>• Variable CCT 1,800K - 8,500K</li><li>• Virtual Gel Swatch Book</li></ul>	<b>COLOR</b> <ul style="list-style-type: none"><li>• ColourTune Technology</li><li>• RGBLAW Color Array</li><li>• CMY Emulation</li><li>• Variable CCT 1,800K - 8,500K</li><li>• Virtual Gel Swatch Book</li></ul>

**SIZE / WEIGHT**

- LxWxH: 185 x 114 x 114 mm
- Weight: 2.9 kg

**SIZE / WEIGHT**

- LxWxH: 236 x 420 x 261 mm
- Weight: 11.2 kg

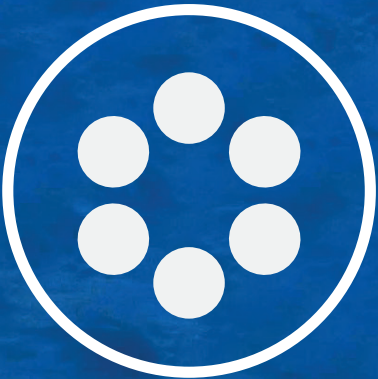
**SIZE / WEIGHT**

- LxWxH: 240 x 420 x 471 mm
- Weight: 19 kg



Elation Professional Europe  
Junostraat 2 • 6468 EW Kerkrade • The Netherlands  
www.elationlighting.eu

\*Lamp/ LED Life may vary depending on several factors including but not limited to: Environmental Conditions, Power/Voltage, Usage Patterns (On-Off Cycling), Control, and Dimming, Gobos & Colors. The information in this catalog has been carefully compiled, but errors or changes may still occur. Technical data, images, and specifications are provided for general information purposes only and may change without prior notice. We assume no liability for printing errors, inaccuracies, or subsequent updates to the specifications.



MORE THAN  
100X SÖL I BLINDER  
AT SOLIDAYS FESTIVAL 2024,  
PARIS, FRANCE



EXPERIENCE  
TOMORROW



ELATION.GLOBAL





SÖL I BLINDER

SÖL II BLINDER

2x 350W RGBLAW  
LED Modular Blinder

SÖL IV BLINDER

4x 350W RGBLAW  
LED Modular Blinder

Elevate your lighting to unprecedented heights with SÖL, a groundbreaking LED series of creative LED blinder and effects solutions that marries cutting-edge technology with artistic ingenuity. The SÖL I BLINDER™, with its innovative modular design, merges state-of-the-art technology and sleek aesthetics, opening up a realm of creative lighting possibilities. Powered by a potent 250W RGB+Lime+Amber+White LED engine, it offers superior brightness and a vibrant color spectrum for captivating visual effects. Designed for versatility, it comes with various lens options and accessories, all housed in a compact, durable IP65-rated casing that stands up to any environment. Transform your stage with the SÖL Blinder series, redefining excellence in live entertainment lighting.



COLOURTUNE  
TECHNOLOGY

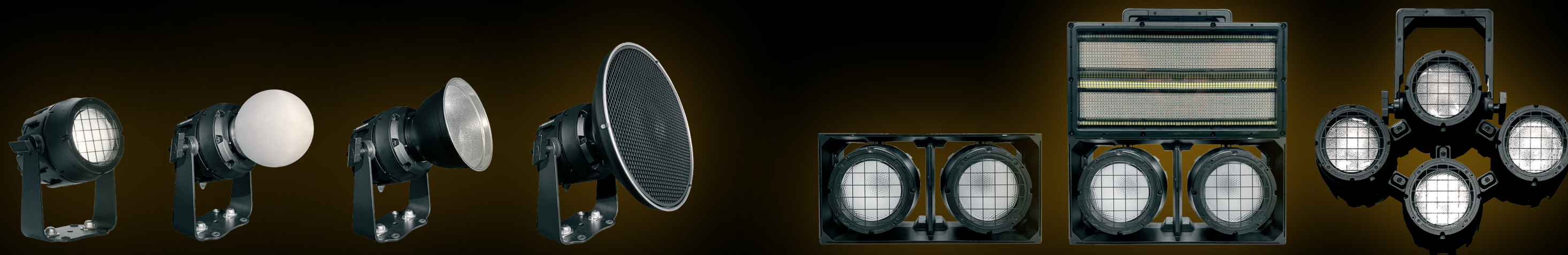
Elation proudly introduces ColourTune Technology, a groundbreaking lighting fixture software that allows for unprecedented control over output and color accuracy across Elation's range of full-spectrum LED lighting fixtures. With ColourTune, users can customize lighting output to meet their exact needs, whether emphasizing brightness or color fidelity. It offers a comprehensive suite of features, ensuring adaptability and color precision for the highest quality lighting designs.

Bob Mentele, Associate Product Manager at Elation, was instrumental in ColourTune's development. He remarked, „Our team has dedicated over a year to research, development, and testing to bring ColourTune Technology to life. This advanced software represents a significant advancement in lighting control and precision and will be a great benefit to the designer who seeks to maximize the potential of our full-spectrum LED products, including fixtures already in the market.“

# Inspired by the radiant sun, SÖL shines with creative possibilities!



⇩ **MODULAR SYSTEM** ⇩  
**LIMITLESS CREATIVE POTENTIAL**



**SÖL + BOWENS MOUNT:**  
ENDLESS POSSIBILITIES WITH  
INDUSTRY-STANDARD ADAPTOR!  
(Accessories sold separately)

**SÖL + INTERCONNECT:**  
COMBINE SÖL WITH BLINDER FRAME,  
PULSE PANEL, PULSE BAR, SIX+ BAR OR L-TRACK!  
(Accessories sold separately)