



Pioneering Light

GDS Theatrical Lighting Solutions

Contents

- 1 | About Us
- 4 | Drive Hub
- 5 | The Future of Lighting
- 6 | Drive Hub at a Glance
- 8 | Royal Albert Hall
- 10 | Stage Management Consoles
- 12 | Harmony Series
- 14 | Lighting Design
- 15 | GDS Special Projects
- 16 | Case Study: Crucible Theatre



About GDS

For the last eighteen years, GDS have been developing award-winning lighting products and control systems.

Our extensive portfolio of lighting products is driven by a tireless approach to innovation and quality by our in-house R&D department. Our lighting design, technical and sales teams work collaboratively with our clients, empowering your ambitions, ideas and visions on an international scale.

Our roots are firmly in the entertainment industry. Trusted as the lighting consultant and supplier to Europe’s most prestigious venues (Royal Albert Hall, Savoy Theatre and Hammersmith Apollo to name a few). GDS have taken their proven driver technology and applied it to a new industry leading range of products.

Beyond our product range, we offer services including lighting design, bespoke products, project management and commissioning. We look forward to helping you bring your lighting dreams from concept to reality.





Crucible Theatre—Sheffield

Drive Hub

Drive Hub is a revolutionary, high capacity centralised drive system delivering unparalleled flexibility for the theatrical space.

When we developed Drive Hub, we set out to create a product that eliminates the restrictions usually associated with lighting. Modular by nature, Drive Hub takes the driver and point of failure from the light fitting in a convenient 19" rack format. This makes the light system far more efficient, easier to maintain and install, and gives lighting designers the flexibility to use luminaires in new ways.

With dual redundancy backup, luminaires connected to Drive Hub will always stay on, and the system-wide reporting and network connectivity provides full feedback and diagnostics.



The Future of Lighting

GDS are pioneering truly centralised lighting systems with our new Drive Hub family.

Developed over the last 10 years, we truly believe this represents the future of LED lighting in the theatrical sector and beyond.

Capable of delivering up to 12kW of power to luminaires at distances of 100m+, with a full selection of modular card options to cater for a wide range of luminaires, it offers channel dimmable lighting from a riser or comms room for an entire venue with varied light sources.

Our patented IPM technology allows for the control of fixtures via legacy mains cabling, using the Smart BOB to take control information from the 48V feed. This is especially useful for heritage projects, and is often used in our retrofit solutions.

Drive Hub will enable all of the luminaires to be powered and controlled from a central area. This will simplify installation saving valuable time on site, and also enable easy maintenance with zero downtime. Additionally, removing the need for internal or local drivers will add elegance to the luminaires and remove weight from the ceiling.

As part of the lighting design process we will specify the Drive Hub system needed to run the luminaires. We will provide layouts and supporting documentation to aid with the installation of the Drive Hub system, as well as support with on-site commissioning.



Drive Hub at a Glance

- Centralised Driver System
- Removes the need for drivers next to fittings, improving access for maintenance
- Fully-Customisable Modular Format: Scalable from small installations up to a whole venue
- System-Wide Reporting
- DMX/DALI Control
- Network Connectivity
- Dual Redundancy Backup: Lights stay on even if a driver fails
- Hot-Swappable power supplies can be changed out without turning the lights off
- IPM Technology enables legacy cabling to be reused
- Much higher efficiency than regular drivers: Save on emergy use and increase light output



Royal Albert Hall—London

Stage Management Consoles

Developed with over 15 years of expert industry experience.

The GDS SM Console is the central point for stage managers to coordinate backstage and front of house applications. Battle-tested in venues for over a decade, it is a proven, control interface during events.

All of our SM Consoles can be integrated with a wealth of subsystems, such as video monitoring, intercoms, paging, cue systems, house-lighting and barbell controls, at the point of creation. Optional 19" rack mount slots can be included for user-supplied equipment.

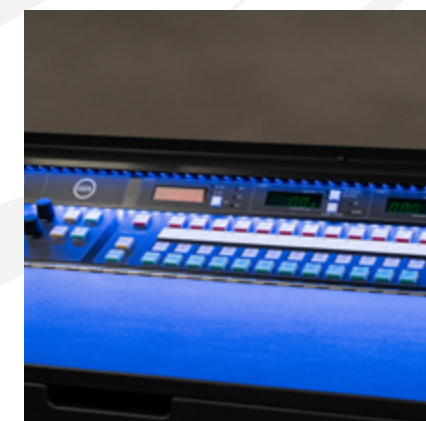
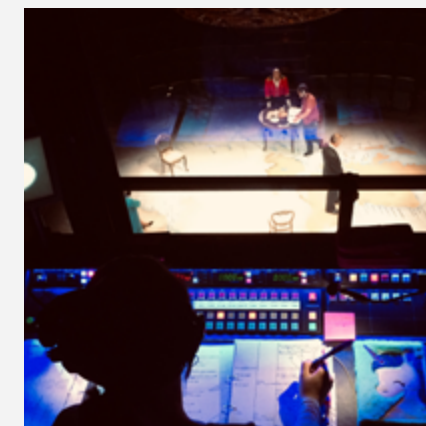
Following intensive stages of research and design, GDS created the Concept 2 SM console. Designed to improve usability and functionality compared to traditional designs, the Concept 2 represents the latest in stage management technology.



Concept 2

Offering a new way of thinking for stage and venue control, we designed Concept 2's operation for practical everyday use.

- Fully-customisable, ergonomic, DSE compliant enclosure.
- Range of optional sub-systems to meet the requirements of any venue, including video monitoring, intercoms, paging, cue systems and front of house lighting.
- The expanded format gives plenty of space for notes and documents.

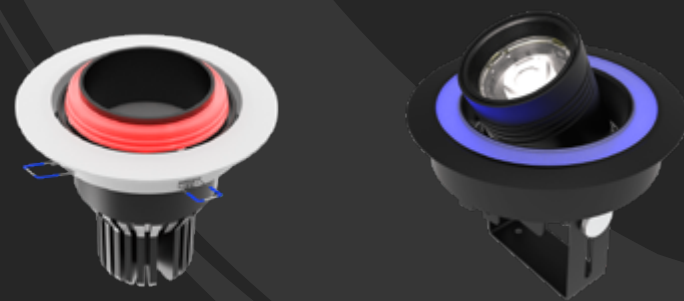


Harmony Series

Create with colour. The Harmony Series combines the very best of white light with beautifully saturated colour, empowering the most dynamic of lighting visions.

From LED strip to ultra-high power full spectrum downlights, Harmony merges perfect quality white light with stunning colour. Connected with the cutting edge Drive Hub technology, break new grounds in all areas for lighting installations.

- Bring the audience into the show with a comprehensive range of house lighting products
- GDS' signature accent ring enables dramatic effects and patterns
- High power options enable even the largest venues to be transformed with high-definition colour.



Lighting Design

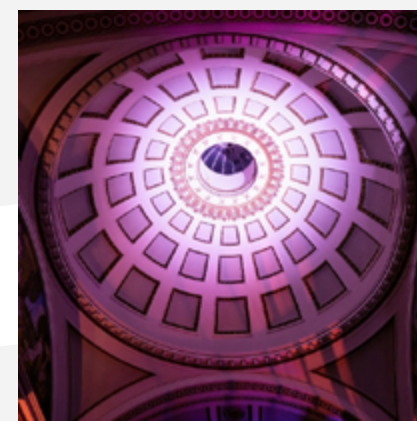
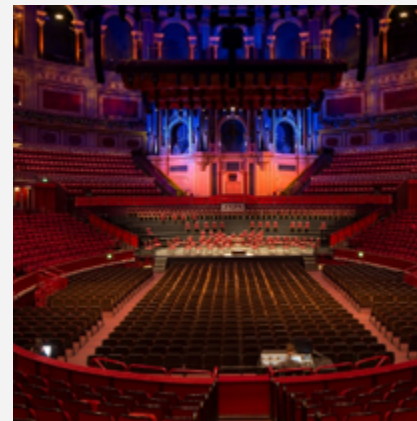
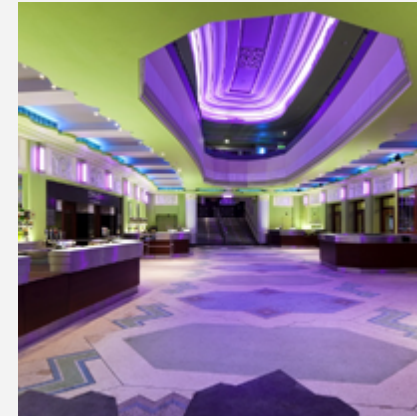
From developing a concept through to creating 3D models and CAD drawings, our talented lighting design team can help to bring your project to life.

Our lighting designers can develop lighting schemes that make use of the full potential of the GDS product range, including the cutting-edge features of Drive Hub.

We will work with you and your budget to develop a scheme that meets your criteria, functionally and aesthetically adding value to the project.

GDS also offer a range of supporting services, including:

- On-site surveys
- Project Management
- Lighting consultancy
- Commissioning
- Continued technical support



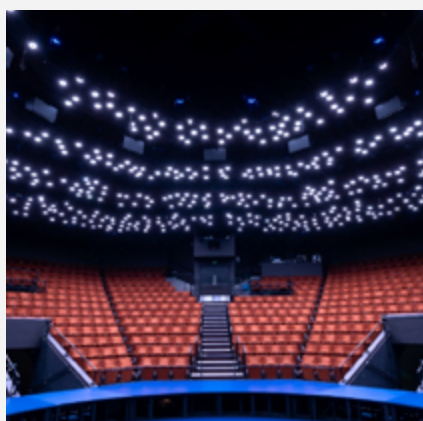
GDS Special Projects

Our in-house special projects team of lighting experts are used to developing unique lighting solutions.

GDS boasts a global catalogue of installations across some of the world's most prestigious venues. We can assist in creating one-off statement pieces, restore and retrofit heritage lighting equipment, and design special products.

Our in-house workshop and factory ensure that the design intent remains intact from concept through to delivery.





Case Study: Crucible Theatre

Originally opened in 1971, the Crucible is a world-famous theatre and iconic landmark set in the heart of Sheffield City centre.

The venue is home to world-class productions, ground-breaking local theatre, and famously hosts the annual World Snooker Championship.

The Crucible's distinctive architecture creates a beautifully intimate venue, and the lighting plays a crucial role in bringing the very best from a wide range of performances. In close collaboration with the renowned theatre projects team at BaileyBertschinger, GDS set about delivering something unique to the Grade II listed building.

After careful consideration of the venues' needs, it was clear that there was not a product on the market that could satisfy this bold vision. A custom solution was required, and the Starfield was born. A highly innovative fixture boasting an ultra-narrow spotlight, variable colour temperature, and a vivid RGBW accent ring.

GDS' ability to adapt to the needs of the end-user and consultant was critical in this instance. The result is a ground-breaking fixture that brings unrivalled flexibility to this extraordinary venue. The Starfield gives Sheffield Theatres the ability to effortlessly elevate an array of performances and events, significantly enhancing the experience for both the live, and television audiences alike.


The solution is further enhanced by GDS' revolutionary Drive Hub system. Configured to the venues exacting requirements, Drive Hub is the most reliable, efficient, and accessible high-capacity drive system available anywhere in the world.

The Crucible is now home to one of the most impressive, and adaptable lighting installations anywhere in the UK.

"We felt that GDS really understood what we needed. Getting that support, and understanding from a company is invaluable on a project like this."

Gary Longfield

Head of Lighting—Sheffield Theatres



Our team is here to help
bring your lighting vision
to life. Get in touch today
to get started.

sales@gds.uk.com

Crucible Theatre—Sheffield



GDS UK

www.gds.uk.com
sales@gds.uk.com
+44 (0) 117 325 0063

Unit 13, Riverside Business Park,
Bristol, BS4 4ED
United Kingdom