

rigp *ort*



www.rigport.com



RigPort

The **RigPort** Series is our innovative system for simple and quick power distribution, optimized for use in the traverse. By minimizing the size and weight of our products, they are easy to conceal, giving you unobtrusive power distribution for e.g. B. enables a trade fair stand or a production in the theater.

By using our clamp you can further optimize your project as you can easily and quickly create a power source at the required point in the structure. Our product design always follows the principles:

- **fast**
- **simply**
- **and exactly where you need it**

The RigPortL1 is a BreakoutBox with Powercon

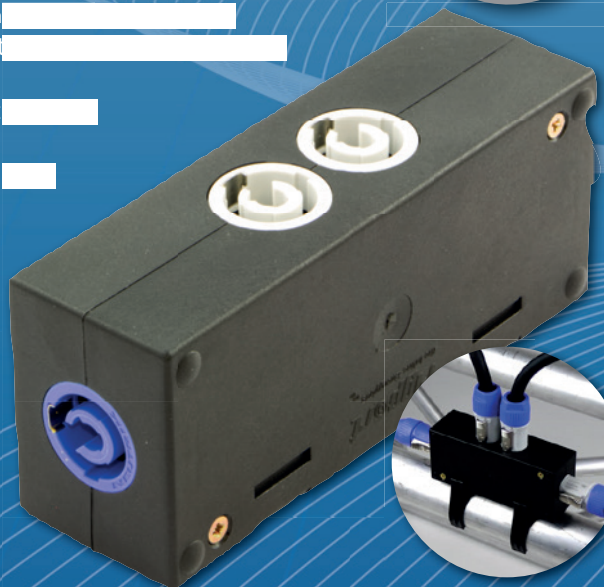
Specific features:

- discreet design, yet small and light
- secure and firm locks
- Dimensionally stable housing made of im
- quick and easy mo using RigPort
- L1S4 line)
- Can be positioned variably in the t
- easy to combine
- RigPort Safety available for secondary backup

Connections:

- 1x Powercon In
- 2x Powercon Out
- 1x Powercon through out

more
Products of this
series on
rigport.com



StagePort

The StagePort is the further development of our RigPort series for use on stage. They also consistently achieve protection level IP54.

The products in the line can be easily hidden thanks to their black plug connections, which allows you to distribute power unobtrusively. You can further optimize your project by using it, as you can easily and quickly create a pick point with your existing cables at the required point.

As here, our product design always follows the principles: fast, easy and exactly where you need it.

The RPL32-MKII is a CEE32, 3-phase power distributor with side outlets. Powercon-T1 taps of all three phases with respective self-resetting 16A fuse.

32A CEE --> Powercon-T1 (self-resetting fused) BreakoutBox

Specific features:

- Smallest CEE32 fuse distributor in the world
- CEE in-line
- small maintenance-free on-stage power distributions
- completely black for the most inconspicuous installation possible
- Can be mounted in the traverse with RPL-Clamp50
- M10 screw mount for attaching couplers, trigger clamps or similar.
- 2x M4 mount
- suitable for outdoor use

Connections:

- 1x CEE32-5p-In
- 3x TrueOne Out
- 1x CEE32-5p Through Out

more
Products of this
series on
rigport.com



RackPort

is an extension of our smart energy supply system **19" form factor**.

The focus here is on:

- Smallest possible size
- highest quality
- Modularity
- 1/3 phase system
- Expandability with smart functions
- (Wi-Fi, Ethernet, remote energy monitoring, web, MQTT, remote switch per output)

The modular system therefore allows new racks to be created or existing racks to be expanded to include the smallest and/or smart energy distribution and energy monitoring systems

The RackPort32T1 is a modular Powercon power distribution for 19" racks only one height unit (1U = 4.44cm)

Specific features:

- modular Powercon distribution for 19" racks
- Voltage indicator LEDs per output
- Rack mounting: front / rear / depth v

Optional:

- Voltage and current measurement via
- Individually switchable outputs

bar

Ethernet/MQTT/Bluetooth
hernet/MQTT/Blueto

more
Products of this
series on
rigport.com

Connections:

- 3x32
- 1x CE
- 9x butt

cabl
- res

outp se)



WatchDog

available for RigPort, StagePort and RackPort

are power monitors based on web technology for energy monitoring.

Easy to integrate into existing energy supply systems via plug and play. This turns conventional power supplies into a system that can be monitored online.

Thanks to internal scripting, it can also act independently, for example in the event of a phase overvoltage, switching off all outputs and remotely controlling other watchdogs.

--> A watchdog that monitors your system

**The RPL32-PM is a simple power monitor.
Voltage/current display for looping into 3-
phase 32A supply lines**

Specific features:

- Digital display voltmeter ammeter, blue
- Voltage measurement range: 60V to 500V, measurement accuracy ± 1
- Current measurement: 0 to 100 A, measurement accuracy ± 1
- CEE in-line
- small maintenance-free on-stage power distributions
- completely black for the most inconspicuous installation possible
- Can be mounted in the traverse with RPL-Clamp50
- 1x M10, 2x M4
- suitable for outdoor use

Connections:

- 1x CEE32-5p-In
- 1x CEE32-5p
Through Out

more
Products of this
series on
rigport.com



DrivePort

DrivePorts are bus-controlled 1-channel inline motor controllers directly on the chain hoist, for example in the traverse. It is therefore the logical continuation of the RigPort concept with logical, active elements in order to achieve the highest degree of flexibility and cost-effectiveness in event technology.

They are very space-saving, inconspicuous and flexible. you need **no racks & laka's** more and have to **noworry** about that **Channel limitation** make. What makes our system even better is the simple integration into a main power cable and the resulting short tap for the motor, which would add a lot of weight and cabling effort to a normal central distribution system.

The **DrivePort32MK2 (2nd generation)** is a smart 1-channel SIL3 chain hoist control based on DMX/RDM for the traverse directly on the train.

Specific features:

- 1 channel DMX512/RDM motor control, SIL3
- Stand-alone or integrated in the RigPort system
- no lakas and controller racks
- Monitoring of all parameters, with self-reset also via RDM
- flexible and modular (grows with requirements)
- Can be expanded to include D8 / D8PLUS / C1 chain hoists/motors
- Load measurement with optional plug-in load measuring cell
- Distance measurement with distance/time measurement

more
Products of this
series on
rigport.com

Optional:

- Mobile SW Suite for full control of the DrivePort ecosystem
- Conditional scenic journeys already with D8PLUS trains, according to BGVC1/DGUV

Connections:

- 1x CEE32-5p-In
- 1x XLR5-in (DMX512)
- 1x XLR5m (X-Endpos)
- 1x XLR4f (X payload)
- 1x XLR5m (X distance)
- 1x CEE16-5p4p out (load)
- 1x XLR5 out (DMX512)
- 1x CEE32-5p through out



SpeakPort RigPeater

more
Products of this
Series on
rigport.com

Speakport the PA speaker distribution system

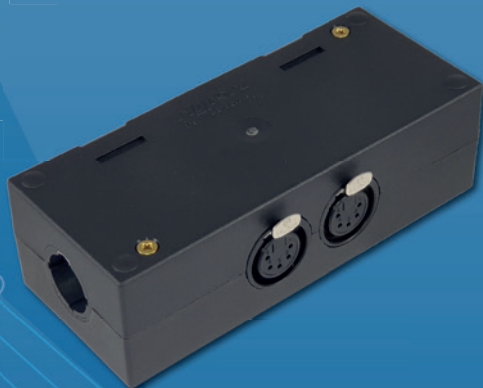
- Speakon In/Out (main bus)
- Speakon Breakout
- "1x" variants with bi-amp change breakout
- Speakport "-T" variants in robust metal



- Very compact Speakon (NLT8 --> NLT4) BreakoutBox and split box with 4 side outlets (1xNLT8M -->2xNLT4F Split)
- NLT8:Pair 1 & 2: 1x 1:1 Out and 1x BiAmped Out (1+ - and 2+ - swapped, e.g. to swap top and bass channel amp)
- NLT8:Pair 3 & 4: 1x 1:1 Out and 1x BiAmped Out (1+ - and 2+ - swapped, e.g. to swap top and bass channel amp)
- and an additional NLT8F socket for looping.

RigPeater the signal amplifiers for event technology

- especially for the traverse
- Active wide-range power supply 90-260V
- Robust industrial drivers for greater resilience
- DMX repeaters/boosters
- Ethernet Repeater/Booster Switch
- Sensor evaluation
- Wi-Fi gateway



- The RigPeater3x3XLR is a compact, powerful DMX512 2-line splitter for the traverse with 2 high-performance boosters for 2x "256" additional devices per line (traditionally 32 per port).

Power cable and adapter for event technology

Extremely robust Titanex rubber cable

CEE fittings in black

larger conductor cross-section (than the minimum)

open transparent shrink tube for your label

Cable Velcro closure

European components



+ 49 (0) 8292 - 950 470

info@rigport.com

www.rigport.com

