



# LIVE PRODUCTION

RIMOTION / RICAPTURE / VENUE GATEWAY

# RiMOTION R6 / R8 / R12: REPLAY SOLUTIONS FOR EVERYONE

**Riedel RiMotion replay solutions are the most intuitive and scalable options in the market, breaking with traditional concepts and bringing a modernized user experience to live replay.**



Slomo Touch UI

Defined by a compact form factor and significant cost advantages, RiMotion represents the high quality and professional approach all our products are known for. RiMotion solutions are available in three different bundles, so you'll find just the right one for your production. With RiMotion R6, R8 and R12 you get to choose from 6 to 12 configurable channels for 4 to 10 camera inputs.

RiMotion offers a pioneering solution combining extensive slow-motion capabilities with Simplylive's acclaimed touchscreen UI approach.

The intuitive user interface that has become a landmark of the ViBox product range, has been further optimized for RiMotion. All features are concentrated in a clear and simple to use touchscreen interface, that even new users can learn to operate in minutes. Additionally, the system comes with a brand new dedicated slow motion remote controller, integrated with the touch UI. This allows the best operator experience with the combination of the dedicated remote and touchscreen interface.

RiMotion is designed for the way operators want to work. Some may prefer the familiar Replay Remote Controller with an intuitive button layout and ultra-responsive jog wheel. Others love working with our touch-screen UI,

with easy-to-access controls and great feeling scroll pad. And some operators want to work with both at the same time, which is why we offer both... so people can work exactly the way they want.

The RiMotion architecture also brings flexibility for remote, at-home productions. The system allows the backend hardware to be located on-site, while the UI can be extended via Ethernet to the production facility. This allows for a smaller footprint, less people needed on location and an unparalleled level of workflow flexibility.



Processing Units

## FEATURES

### R6

- Compact 1RU Unit
- Powerful, Professional Solution
- Redundant
- 6 channel 1080p
- RCU

### R8

- Compact 1RU Unit
- Powerful, Professional Solution
- Redundant
- 8 channel 1080p
- RCU

### R12

- Compact 2RU Unit
- Powerful Replay Solution
- Single or Dual Operator
- Redundant PSU & RAID Storage
- Large Recording Capacity
- 12 channel 1080p
- 2 RCU
- Complete Bundle Package

# POWERFUL AND COMPACT SLOW MOTION SOLUTIONS

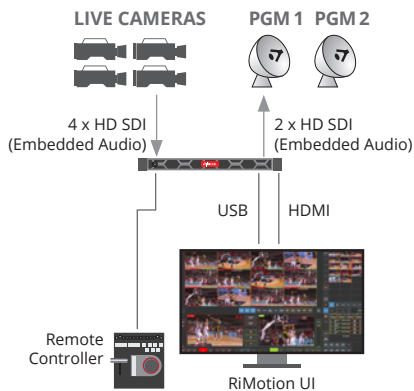
RiMotion R6 and R8 are the perfect starting point for live replay, while the R12 takes your replay solution to another level. With its dual operator support and the ability to network multiple servers to increase the power of your replays to whatever production scale you might need.

The R6/R8/R12 offer 6/8/12 configurable channels for up to 4/6/8 camera inputs with a minimum hardware footprint in a 1/1/2 RU portable chassis and include:

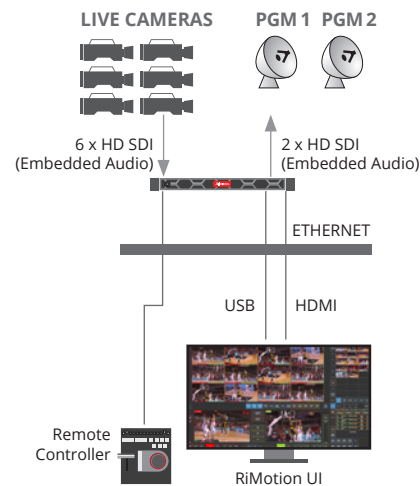
- Replays & Highlights
- Import / Export of media
- New Slow Motion Remote Controller

- With the R12 bundle, you'll also get
- 4 Outputs for Dual Operators
  - Networking of Multiple R12 Servers

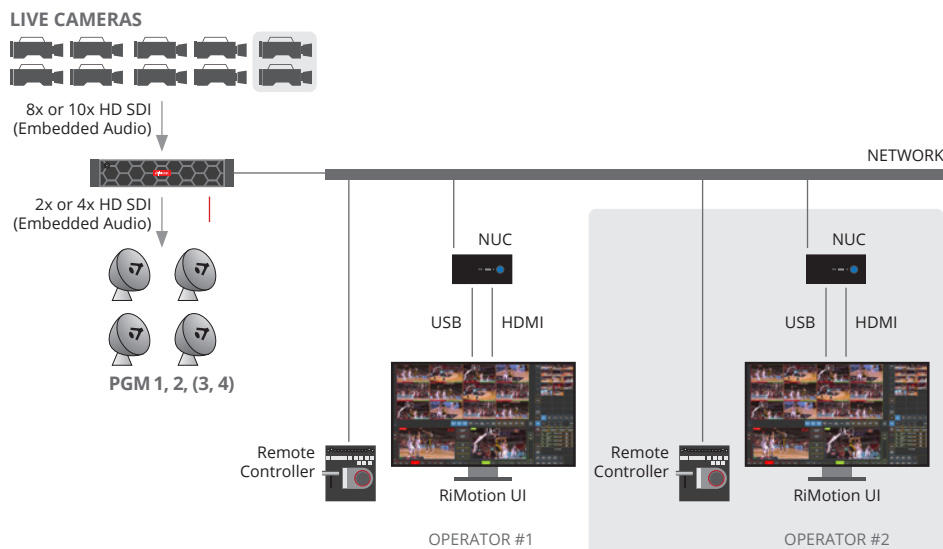
## R6



## R8



## R12



# TECHNICAL SPECIFICATIONS

R6	R8	R12
VIDEO		
4x HD SDI Inputs	6x HD SDI Inputs	Up to 10x HD SDI Inputs
2x HD SDI Outputs	2x HD SDI Outputs	Up to 4x HD SDI Outputs
Additional I/O Options: NDI, TS UDP, TS RTP or SRT	Additional I/O Options: NDI, TS UDP, TS RTP or SRT	10in/2out Single User or 8in/4out Dual User
Codec: DNxHD 120/145Mbps	Codec: DNxHD 120/145Mbps	Codec: DNxHD 120/145Mbps
		Additional I/O Options: NDI, TS UDP, TS RTP or SRT
VIDEO STANDARD		
HD 720p, 1080i and 1080p, 8-bit	HD 720p, 1080i and 1080p, 8-bit	HD 720p, 1080i and 1080p, 8-bit
AUDIO		
Embedded audio: 16 tracks per video channel (input or output)	Embedded audio: 16 tracks per video channel (input or output)	Embedded audio: 16 tracks per video channel (input or output)
128Ch Dante or 64Ch AES67	128Ch Dante or 64Ch AES67	128Ch Dante or 64Ch AES67
STORAGE		
2TB SSD storage (up to 24h)	2TB SSD storage (up to 24h)	5x2TB SSD Internal RAID Storage
4TB or 8TB SSD (optional extension)	4TB or 8TB SSD (optional extension)	Upgradable to 5x4TB SSD
USB3 connectors for import from / export to external storage	USB3 connectors for import from / export to external storage	USB3 connectors for import from / export to external storage
UI MINI PC		
	Intel Core i7, 2.8GHz, 16GB RAM, 250G SSD	2x UI Mini PCs included in the bundle
	110 / 230 V, 120W power supply	Intel Core i7, 2.8GHz, 16GB RAM, 250GB SSD
		110 / 230 V, 120W power supply
NETWORK		
1x 1 Gigabit Ethernet port	1x 1 Gigabit Ethernet port	2x 1 Gigabit Ethernet port
1x 10 Gigabit Ethernet port	1x 10 Gigabit Ethernet port	2x 10 Gigabit Ethernet port
CONTROLLER		
Dedicated Replay Remote Controller	Dedicated Replay Remote Controller	Dedicated Replay Remote Controller (RCU)
		2x RCU included in the bundle
Touchscreen	Touchscreen	Optional Touchscreen (not provided)
PROTOCOLS		
GPI control	GPI control	GPI control
TSL5	TSL5	TSL5
OPERATING SYSTEM		
Microsoft Windows 10	Microsoft Windows 10	Microsoft Windows 10
PHYSICAL		
1RU Chassis: HxWxD: 1.68" (42.8 mm) x 18.98" (482.0 mm) x 23.19" (589.1 mm) with Bezel or 22.74" (577.6 mm) without Bezel.	1RU Chassis: HxWxD: 1.68" (42.8 mm) x 18.98" (482.0 mm) x 23.19" (589.1 mm) with Bezel or 22.74" (577.6 mm) without Bezel.	2RU Chassis: HxWxD: 86.8mm (3.42") x 434.0mm (17.09") x 647.1mm (25.48")
Weight: 19.27lb (8.74 kg)	Weight: 19.27lb (8.74 kg)	Weight: 27.3 kg (60.19lb)
POWER		
Redundant Dual 110/230 V, 550W PSUs	Redundant Dual 110/230 V, 550W PSUs	Redundant Dual 110/230 V, 1100W PSUs





i4 Touch UI & Hardware Unit

# RiCAPTURE i4

**The New Networked UHD Master Recording Solution. i4 Compact, powerful, high-quality Master Recorder.**

The RiCapture i4 system offers a powerful UHD master recording solution built into a small form-factor with significant cost advantages.

Controlled with an easy-to-use interface for quick setup and deployment, i4 lets users record 1x UHD 12G-SDI input or 4x 3G-SDI inputs with 16 channels of embedded audio per video channel. Additional audio sources are available with 128 channels of Dante or 64 Channels of AES67. The i4 high quality recording offers DNxHD or DNxHR along with H264 4:2:0 encoding up to 40 Mbps. Its local i4 recording storage offers continuous loop recording for the captured content, with options to clip and export files as needed from the available local storage.

The application can connect up to 4 targets for streaming destinations. Users can easily select within each of these destinations whether to send only the high resolution DNxHD/R, the H264 – or both. i4 offers maximum versatility to capture the recorded media locally, on removable storage, on network attached storage or to live streaming destinations.

RiCapture i4 it is the ideal solution for all your master recording needs – whether in an OB or live studio environment.

## FEATURES

- Portable and Compact
- Powerful, Professional Solution
- Recording of up to 4x 3G-SDI inputs HD and 1x 12G-SDI input UHD
- Up to 4 targets
- Can record DNx & H.264 at the same time

## i4

VIDEO	VIDEO STANDARD	AUDIO
4x HD SDI Inputs	HD 720p, 1080i and 1080p, 8-bit	Embedded audio: 16 tracks per video channel
1x UHD SDI Inputs	4K UHD, 8-bit	128Ch Dante or 64Ch AES67
Codec HD: DNxHD 8bits 120/145Mbps		
Codec UHD: DNxHR 8bits 960/1160Mbps		
RECORD PROFILE	STORAGE	NETWORK
Can record DNx and H.264 at the same time	2TB SSD storage (up to 24h)	2 x 1 Gigabit Ethernet ports
H.264 4:2:0 encoding up to 40 Mbps	Rack-mount option	
Up to 4 targets		
OPERATING SYSTEM	PHYSICAL	POWER
Microsoft Windows 10	Main unit: 11 (H) x 30 (D) x 38 (W) cm (4 x 12 x 15 in.) chassis, 7 kg (15 lb)	Power Supply: 110/230 V, 350W
	Rack-mount option	

# VENUE GATEWAY

## LOW LATENCY CONTRIBUTION REMOTE PRODUCTION GATEWAY

The Riedel Venue Gateway is a low-latency, bi-directional, multi-channel and multi-format contribution appliance bridging broadcast production infrastructures with distant venues. It aggregates and transports video signals, audio signals, commentary signals, intercom signals and tally.

Supporting many IP formats and SDI connectivity, the Venue Gateway offers great agility for contribution feed delivery. The web management interface has been designed to centralize and simplify the configuration. Featuring codec formats like H.264 and H.265, the gateway solution provides software defined low-latency encoding and decoding on 8 bi-directional channels with the highest broadcast quality.

The Venue Gateway offers seamless integration with direct IP sources being sent to the ViBox platform. It can also be integrated with any specialized transport security and redundancy solution such as Netinsight Nimbra Edge, Zixi Broadcaster or Techex MWedge.

Its built-in low latency multiviewer lets remote or on-site engineers view all sources in real time and test the network infrastructure with pre-loaded content.

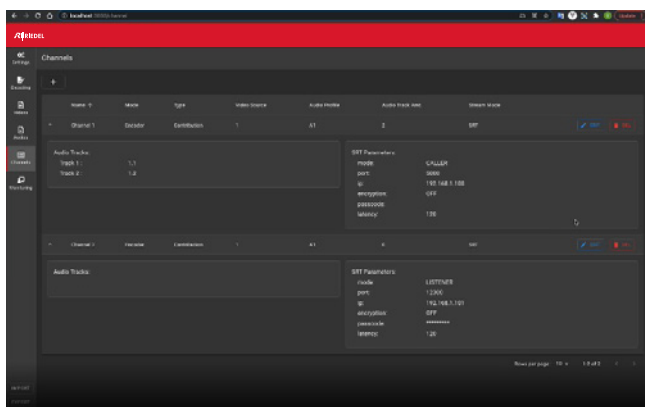
Designed to provide flexibility and reliability to the users, the Venue Gateway is a complete solution that addresses all requirements of modern-day remote production.

### FEATURES

- 8 Channel bi-directional encoder/decoder for remote production contribution
- Built-in low latency multiviewer offering remote or on-site monitoring
- Internal audio routing from encode to decode sources with embedded, NDI®, AES67 or Dante®
- Receives tally from remote production mixer for camera operators via TSL-5 or GPIO

### BENEFITS

- Easy and flexible to deploy with multiple format codecs with low latency, high quality signals
- Aggregates all key requirements in a transport solution providing video, audio, commentary audio, intercom and tally
- Integration with top industry solutions for security and redundancy



Web interface



## Venue Gateway

INTERFACE	VIDEO CODEC	AUDIO CODEC
8 x Bi-Directional 3G-SDI	H.264 4:2:0 8 bits	AAC
2 x 1 Gbps RJ45 Ethernet	H.264 4:2:2 10 bits	MPEG-1 Layer II
1 x Genlock input	H.265 4:2:0 8 bits	
1 x LTC XLR	JPEG XS (coming soon)	

TRANSPORT FORMAT	PATH PROTECTION	TALLY
SRT	SRT (incl. redundancy)	GPI/O
NDI®	RIST	TSL5 over IP for Tally and UMD
TS UDP	ZIXI	
TS RTP	2022-7 compliant (through 3rd party)	
Netinsight - Nimbra Edge		
Zixi - Broadcaster		
Techex - MWedge		
128Ch Dante or 64Ch AES67		

COMMUNICATION - TALKBACK	OPERATING SYSTEM	HARDWARE
Dante®, AES67 supported	Ubuntu 18.04 or superior	11(H) x 30 (D) x 38 (W) cm, 7 kg 4 (H) x 12 (D) x 15 (W) in, 15 lbs

MONITORING
Integrated Multiviewer with video, audio, timecode and tally
Unrecovered packets, CC errors, RTP sequence errors, ETR290 (through 3rd party)



Riedel Communications GmbH & Co. KG  
Uellendahler Str. 353 | 42109 Wuppertal | Germany  
Phone +49 (0) 202 292-90 | [info@riedel.net](mailto:info@riedel.net) | [www.riedel.net](http://www.riedel.net)

#01/2023