



Contact

1F., No. 189-9, Liuzilin, Liuxiang Vil.,
Shuishang Township, Chiayi County 608013,
Taiwan (R.O.C.)
Phone: +886 5-268-7550
Fax: +886 5-268-1110



yc@yeuchyuan.com www.yeuchyuan.com.tw

Glue Gun & Glue Pen Comparison & Specifications



SPECS

	GOA07	GO107	GO207	GOS07	GOP07
Power	10W	10W	10W	10W	10W
Voltage	3.7V DC	3.7V DC	3.7V DC	3.7V DC	3.7V DC
Glue Dimensions	ø7mm (0.28")	ø7mm (0.28")	ø7mm (0.28")	ø7mm (0.28")	Ø7mm (Ø0.28") L 200mm (L 8")
Max. Temp.	Max 160° (320°F)	Max 160° (320°F)	Max 160° (320°F)	Max 160° (320°F)	Max 160° (320°F)
Heat-Up Time	2 min	2 min	2 min	2 min	2 min
Run Time	90 min	90 min	90 min	90 min	90 min
Charge Time	90% ≥ 4 hrs	90% ≥ 4.5 hrs	90% ≥ 4.5 hrs	90% ≥ 2 hrs <small>Fast Charging</small>	90% ≥ 2.5 hrs <small>Fast Charging</small>
Input	USB-C 5 V ≍ 1 A	USB-C 5 V ≍ 1 A	USB-C 5 V ≍ 1 A	USB-C 5 V ≍ 2 A	USB-C 5 V ≍ 2 A
Safety Approval	UL & CE Pending	UL & CE	UL & CE	UL & CE Pending	UL & CE Pending
Battery Capacity	2000 mAh	2600 mAh	2600 mAh	2000 mAh	2600 mAh
Precision Nozzle	●	●	●	●	●
Soft/Anti-Slip Trigger	●	●	●	●	●
Comfort Grip					●
Safety Power Switch	●	●	●	●	●
USB-C Charging Port	●	●	●	●	●
LED Illumination	●	●	●	●	●
Status Indicator	●	●	●		●
Battery Power Indicator				●	
Replaceable Battery		● Flat-top 18650 3C-rate, 2600 mAh or Less	● Flat-top 18650 3C-rate, 2600 mAh or Less		
Glue Inlet Vibe Light				●	
Optional Features	● <small>Fast Charging</small> 90% ≥ 2.5 hrs USB-C 5 V ≍ 2 A ● <small>Longer run time</small> 120 mins with Battery 2600 mAh	● <small>Fast Charging</small> 90% ≥ 2.5 hrs USB-C 5 V ≍ 2 A	● <small>Fast Charging</small> 90% ≥ 2.5 hrs USB-C 5 V ≍ 2 A	● <small>Fast Charging</small> 90% ≥ 2.5 hrs USB-C 5 V ≍ 2 A ● <small>Longer run time</small> 120 mins with Battery 2600 mAh	



GOP07

Battery Glue Pen

Glue Size: Ø7mm (Ø0.28") & Length 200mm (8")
Max. Temp: 160°C / 320°F
Power: 10W
Voltage: 3.7 V DC
Heat Up Time: 2 min
Run Time: 90 min
Charge Time: 90% ≥ 2.5 hrs Fast Charging
Input: 5 V ≍ 2 A
Charging port: USB-C

Safety Approval: Patent

Built-in Battery:
Model Flat-top 18650
Capacity 2600mAh

Packaging: Color box or Double blister
Contents: 1 Glue Pen,
1 USB-C to USB-A cable, 1 Manual



Precision
Nozzle



LED
Illumination



Fast
Charging



Comfort
Grip



Status
Indicator



Li-Ion
Battery



NOVEL BATTERY GLUE GUN



EMPOWER THE FREE MOVEMENT OF GLUE

GOA07



Battery Glue Gun

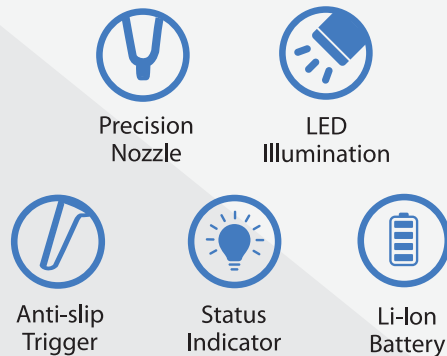
Glue Size: Ø7mm (Ø0.28")
Max. Temp: 160°C / 320°F
Power: 10W
Voltage: 3.7 V DC
Heat Up Time: 2 min
Run Time: 90 min
Charge Time: 90% ≥ 4 hrs
Input: 5 V = 1 A
Charging port: USB-C

Safety Approval: Patent

Built-in Battery:
Model Flat-top 18650
Capacity 2000mAh

Packaging: Color box or Double blister
Contents: 1 Glue Gun,
1 USB-C to USB-A cable, 1 Manual

Optional Features:
Charge Time: 90% ≥ 2.5 hrs Fast Charging
Input: 5 V = 2 A
Longer Run Time: 120 mins (with 2600 mAh Battery) Longer run time



Battery Glue Gun

Glue Size: Ø7mm (Ø0.28")
Max. Temp: 160°C / 320°F
Power: 10W
Voltage: 3.7 V DC
Heat Up Time: 2 min
Run Time: 90 min
Charge Time: 90% ≥ 4.5 hrs
Input: 5 V = 1 A
Charging port: USB-C

Safety Approval: Patent

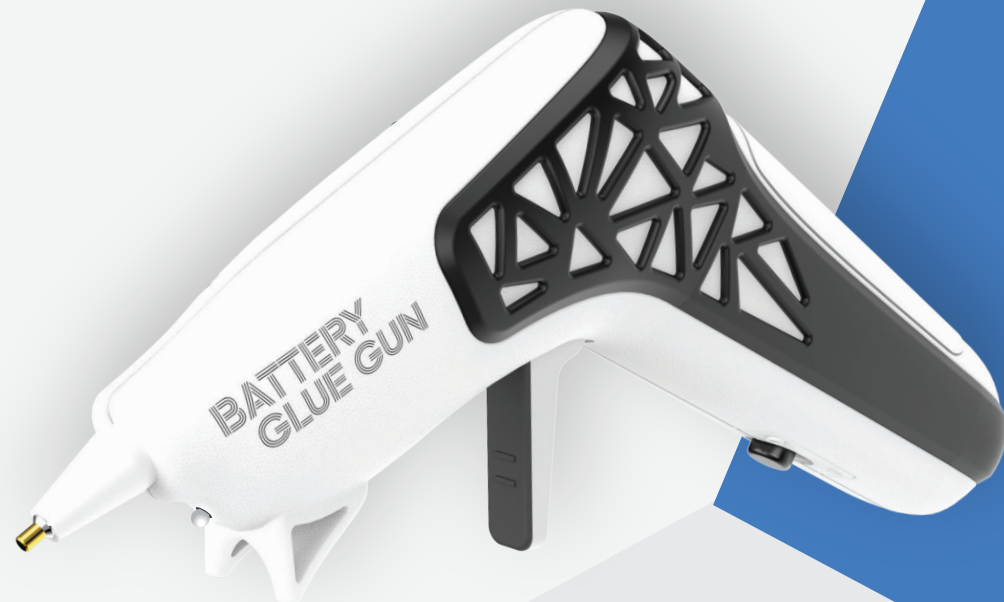
Supplied Battery: 2600mAh
Compatible Battery:
Model Flat-top 18650,
3C-rate, 2600mAh or less

Packaging: Color box or Double blister
Contents: 1 Glue Gun, 1 Screwdriver
1 USB-C to USB-A cable, 1 Manual

Optional Features:
Charge Time: 90% ≥ 2.5 hrs Fast Charging
Input: 5 V = 2 A



GO107



Battery Glue Gun

Glue Size: Ø7mm (Ø0.28")
Max. Temp: 160°C / 320°F
Power: 10W
Voltage: 3.7 V DC
Heat Up Time: 2 min
Run Time: 90 min
Charge Time: 90% ≥ 4.5 hrs
Input: 5 V = 1 A
Charging port: USB-C

Safety Approval: Patent

Supplied Battery: 2600mAh
Compatible Battery:
Model Flat-top 18650
3C-rate, 2600mAh or less

Packaging: Color box or Double blister
Contents: 1 Glue gun, 1 Screwdriver,
1 USB-C to USB-A cable, 1 Manual

Optional Features:
Charge Time: 90% ≥ 2.5 hrs Fast Charging
Input: 5 V = 2 A



GO207

Battery Glue Gun

Glue Size: Ø7mm (Ø0.28")
Max. Temp: 160°C / 320°F
Power: 10W
Voltage: 3.7 V DC
Heat Up Time: 2 min
Run Time: 90 min
Charge Time: 90% ≥ 2 hrs Fast Charging
Input: 5 V = 2 A
Charging port: USB-C

Safety Approval: Patent

Built-in Battery:
Model Flat-top 18650
Capacity 2000mAh

Packaging: Color box or Double blister
Contents: 1 Glue Gun,
1 USB-C to USB-A cable,
1 Manual

Optional Features:
Charge Time: 90% ≥ 2.5 hrs Fast Charging
Input: 5 V = 2 A
Longer Run Time:
120 mins Longer run time
(with 2600 mAh Battery)



GOS07