

ALOURA PENDANT



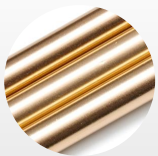
The Aloura is Loomiosa's latest and most impressive creation, designed for large, spacious areas like hotel lobbies. Its bold, sculptural appearance fills the space with dynamic light and a visual experience that is constantly changing from every viewpoint.

Designed by:

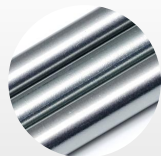
Daniel Mato

Finishes

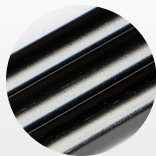
Standard metal colors:



Pearl

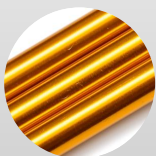


Grey

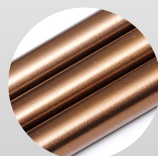


Black

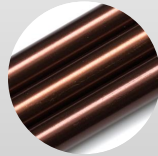
Custom metal colors (please contact us for availability and lead times):



Orange



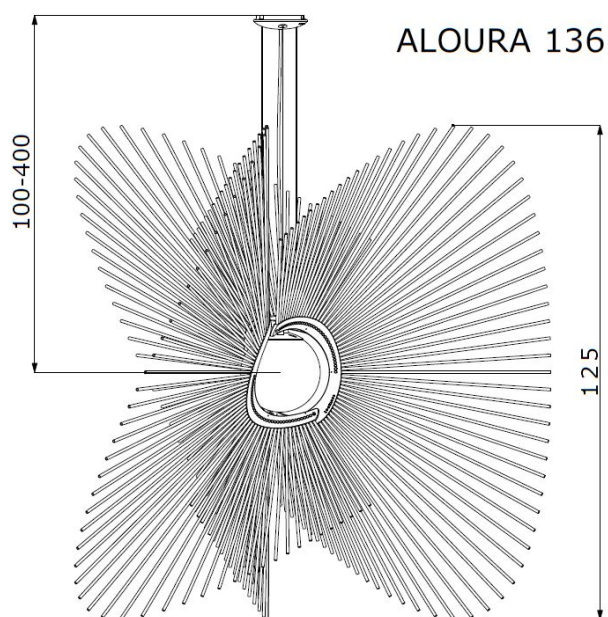
Almond



Maroon

*Available as uni-color and multi color version

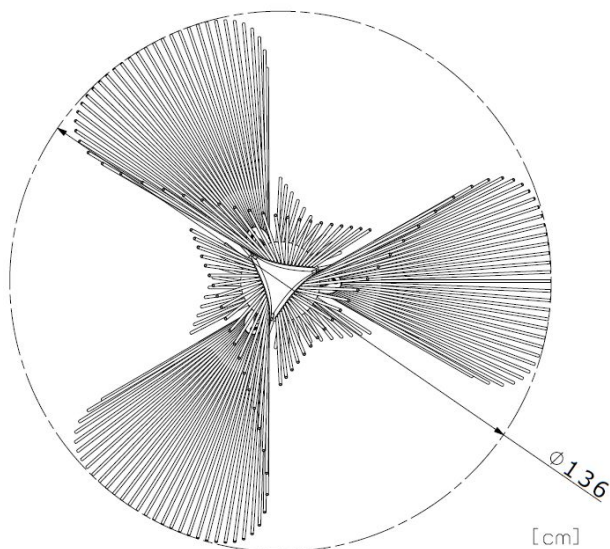
Details



Size: Ø136cm ↑125cm (Ø54" ↑49")
Net weight: 5kg (11.0lbs)

Packaging:
Cardboard box,
(L/W/H):102/28/25 cm
Gross weight: 7 kg

Light source:
1xE27 LED bulb 7-15W, 1000-1700lm,
2700-4000K
Other light bulbs may be available on request



Materials / specifications:

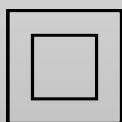
Anodized aluminium poles
3D printed, painted polyamide holder
Frosted glass shade
3D printed, painted ceiling cover
Fabric covered wire, customizable

Delivered as partially assembled.

Final assembly takes ~60-90 min before installation

US version: E26 socket, (bulb is not included)

The electric components are UL-listed, the luminaire itself is not



Class II /
Double insulated



220-240V
~50/60Hz



Indoor use



CE-Mark