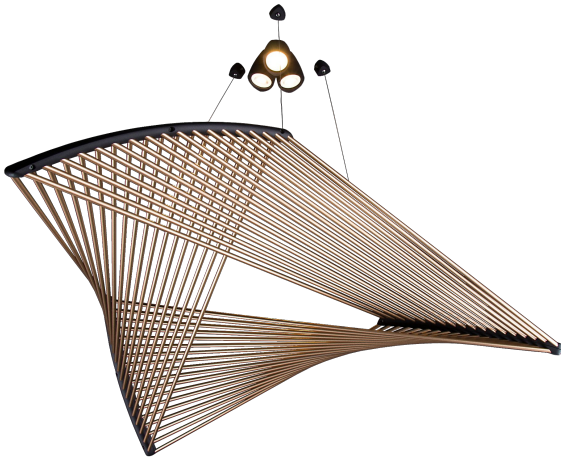


DELTA PENDANT

The shape of the Delta catches the eye immediately. It gives a special visual experience from each viewing angle. From some viewpoints it seems to be a simple triangle, from others it looks like a sophisticated work of art. It can be combined with various ceiling mounted light sources.



Available in two sizes:

Delta 99

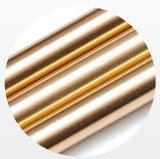
Delta 133

Designed by:

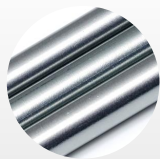
Daniel Mato

Finishes

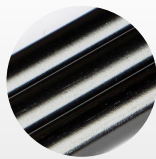
Standard metal colors:



Pearl

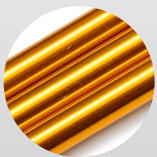


Grey

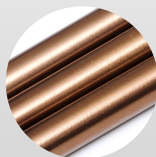


Black

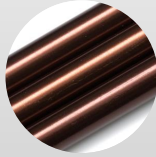
Custom metal colors (please contact us for availability and lead times):



Orange



Almond



Maroon

Details

Materials / specifications:

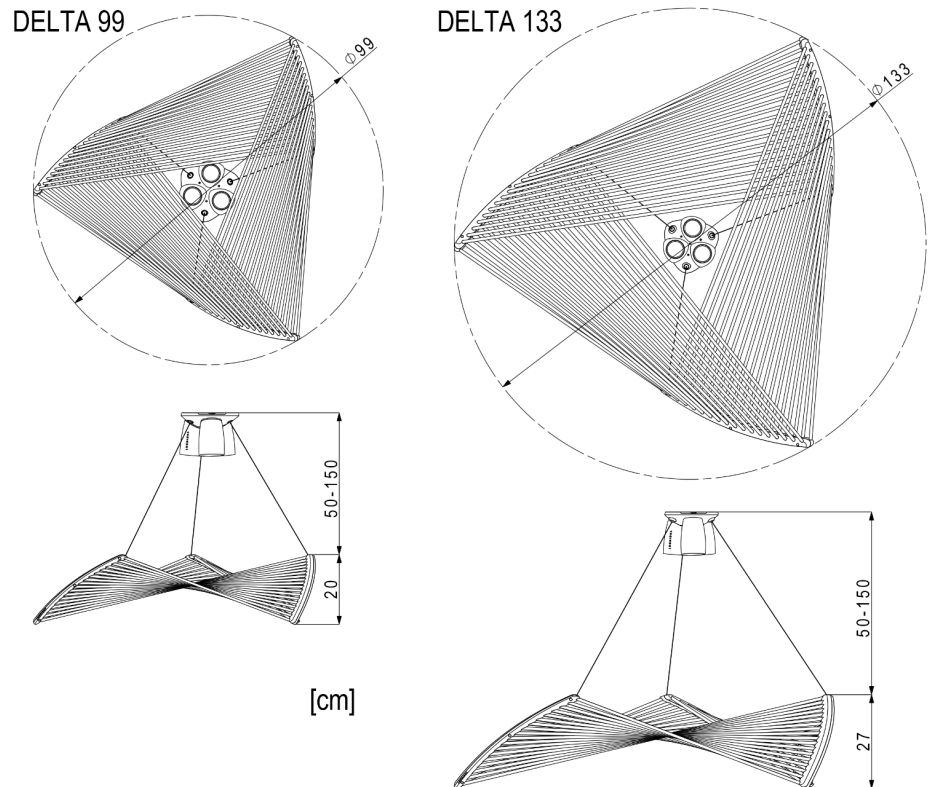
Anodized aluminium poles
3D printed, painted polyamide holder
3D printed, painted ceiling cover
Compatible with other ceiling light sources

US version: bulb is not included

The electric components are UL-listed, the luminaire itself is not

Delivered as partially assembled.

Final assembly takes ~20-30 min before installation



DELTA 99

Size: $\varnothing 99\text{cm} \uparrow 20\text{cm}$ ($\varnothing 39'' \uparrow 8''$)
Net weight: 2kg (4.5lbs)

Packaging:
Cardboard box,
(L/W/H): 101/36/30 cm
Gross weight: 8 kg

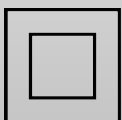
Light source:
3XGU10 LED
3X5W, ~1500lm, 2700-4000K

DELTA 133

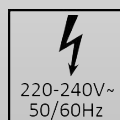
Size: $\varnothing 133\text{cm} \uparrow 27\text{cm}$ ($\varnothing 52'' \uparrow 11''$)
Net weight: 4kg (9.0lbs)

Packaging:
Cardboard box,
(L/W/H): 130/46/36 cm
Gross weight: 10 kg

Light source:
3XGU10 LED
3X5W, ~1500lm, 2700-4000K



Class II /
Double insulated



220-240V
~50/60Hz



Indoor use



CE-Mark