

MODEL 8 PENDANT

The Model 8 originates from one of our previous creation, the 'Space 96'. It's form reminds some people of infinity, others say it looks like a flying butterfly.

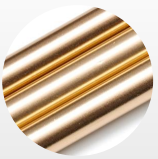


Designed by:

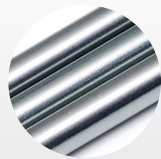
Daniel Mato

Finishes

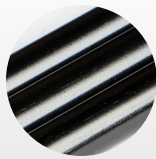
Standard metal colors:



Pearl

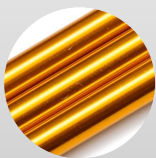


Grey

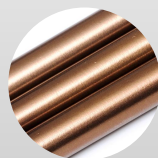


Black

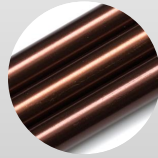
Custom metal colors (please contact us for availability and lead times):



Orange



Almond



Maroon

Details

Materials / specifications:

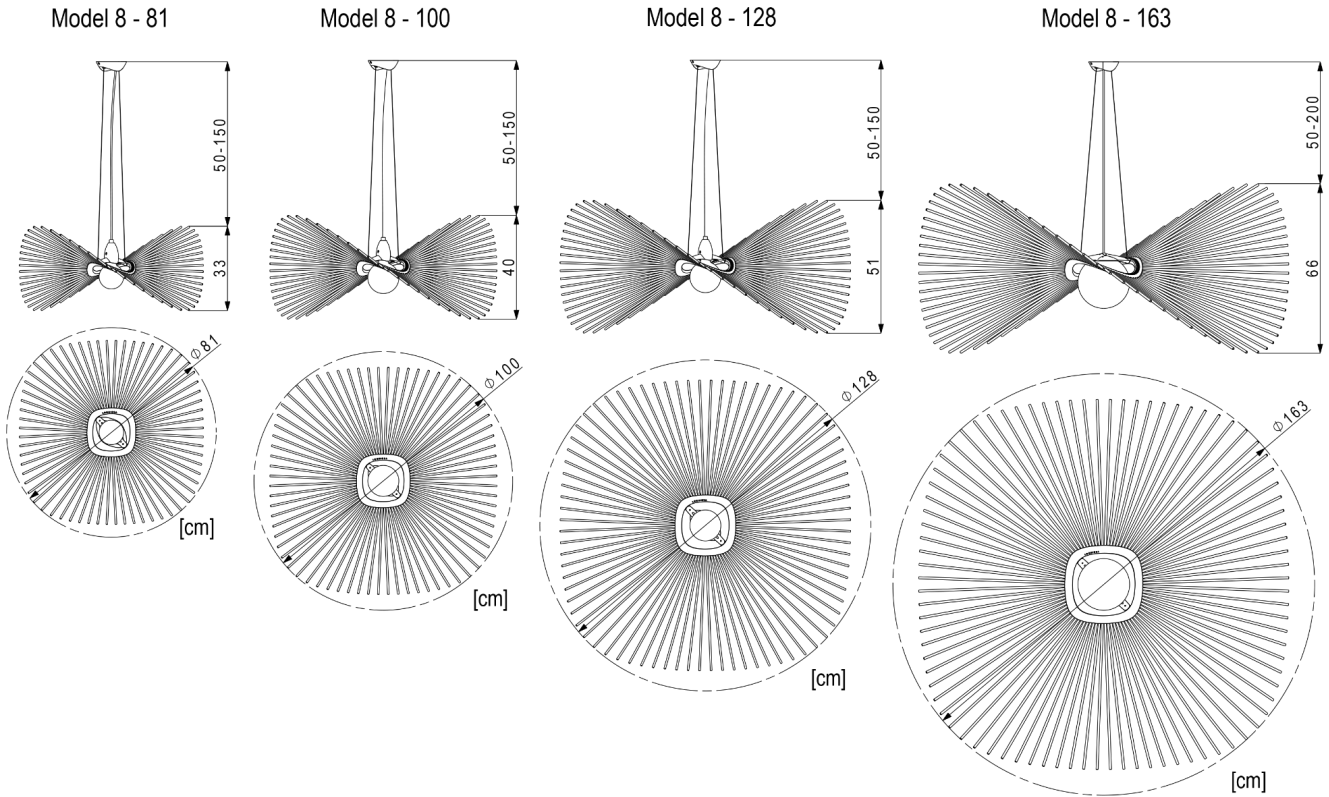
- Anodized aluminium poles
- 3D printed, painted polyamide holder
- M8-163: Frosted glass shade
- 3D printed, painted ceiling cover
- Fabric covered wire, customizable

Delivered as partially assembled.

Final assembly takes ~30-45 min before installation

US version: E26 socket, bulb is not included

The electric components are UL-listed, the luminaire itself is not



MODEL 8 - 81

Size: Ø81cm ↑33cm
(Ø32" ↑13")
Net weight: 1.4kg (3.0lbs)

Packaging:
Cardboard box,
(L/W/H): 60/24/13 cm
Gross weight: 3.0 kg

Light source:
1xE27 G105 White LED bulb
7-12W, 1000-1500lm,
2700-4000K
Other light bulbs may be available
on request

MODEL 8 - 100

Size: Ø100cm ↑40cm
(Ø40" ↑16")
Net weight: 1.8kg (4.0lbs)

Packaging:
Cardboard box,
(L/W/H): 67/26/22 cm
Gross weight: 3.5 kg

Light source:
1xE27 G125 White LED bulb
7-12W, 1000-1500lm,
2700-4000K
Other light bulbs may be available
on request

MODEL 8 - 128

Size: Ø128cm ↑51cm
(Ø50" ↑20")
Net weight: 2.5kg (5.5lbs)

Packaging:
Cardboard box,
(L/W/H): 84/24/21 cm
Gross weight: 4.0 kg

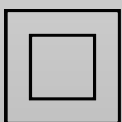
Light source:
1xE27 G125 White LED bulb
7-12W, 1000-1500lm,
2700-4000K
Other light bulbs may be available
on request

MODEL 8 - 163

Size: Ø163cm ↑66cm
(Ø64" ↑26")
Net weight: 3.5kg (7.5lbs)

Packaging:
Cardboard box,
(L/W/H): 102/28/25 cm
Gross weight: 5.0 kg

Light source:
1xE27 A60 LED bulb 7-12W,
1000-1500lm, 2700-4000K
Other light bulbs may be available
on request



Class II /
Double insulated



220-240V
~50/60Hz



Indoor use



CE-Mark