

LEAF PENDANT



As its name suggests, the shape of this pendant was influenced by palm leaves. The unique form gives a different impression from every viewing angle. The aim of this characteristic appearance is to make the luminaire a compelling and prominent element of the room by itself. This effect gets emphasized by the ever-changing shades of glitter of the coloured aluminium poles depending on light condition.

Available in three sizes:

Leaf 72

Leaf 97

Leaf 127

Designed by:

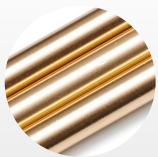
Daniel Mato



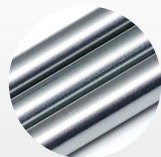
A' DESIGN AWARD
WINNER 2019
PLATINUM

Finishes

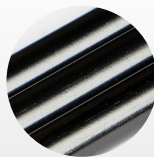
Standard metal colors:



Pearl



Grey

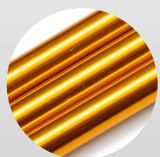


Black

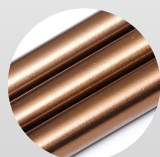
The two sides of the shade can be made in different colors.

The Leaf 97 and 127 are also available with pole tips in different colors.

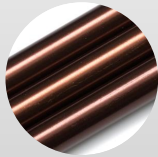
Custom metal colors (please contact us for availability and lead times):



Orange



Almond



Maroon



Details

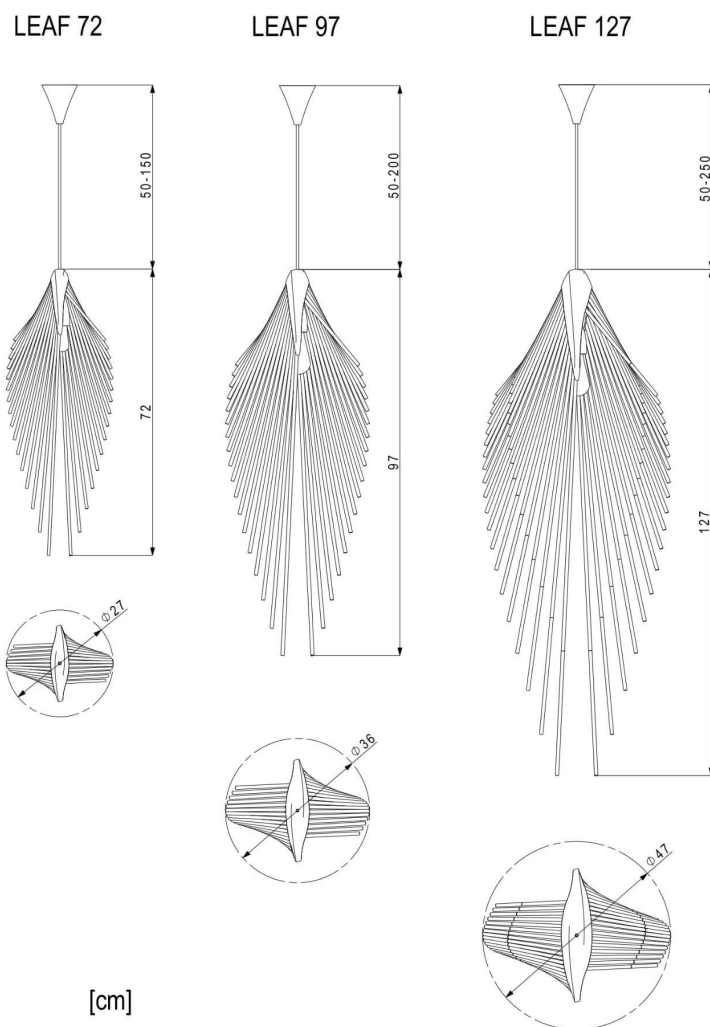
Materials / specifications:

Anodized aluminium poles
 3D printed, painted polyamide holder
 3D printed, painted ceiling cover
 Fabric covered wire, customizable

Delivered as fully assembled

US version: E26 socket, bulb is not included

The electric components are UL-listed, the luminaire itself is not



LEAF 72

Size: \uparrow 72cm \varnothing 27cm (\uparrow 28" x \varnothing 11")

Net weight: 1.2kg (2.5lbs)

Packaging:

Cardboard box,
 (L/W/H): 77/28/23 cm

Gross weight: 3.5 kg

Light source:

1x E27 ST48 Edison vintage LED bulb
 4W, 400lm, 2200-2500K

(Other light bulbs may be available on request)

LEAF 97

Size: \uparrow 97cm \varnothing 36cm (\uparrow 38" x \varnothing 14")

Net weight: 1.8kg (4.0lbs)

Packaging:

Cardboard box,
 (L/W/H): 101/36/30 cm

Gross weight: 5 kg

Light source:

1x E27 ST64 Edison vintage LED bulb
 6.5W, 700lm, 2200-2500K

(Other light bulbs may be available on request)

LEAF 127

Size: \uparrow 127cm \varnothing 47cm (\uparrow 50" x \varnothing 19")

Net weight: 2.5kg (5.5lbs)

Packaging:

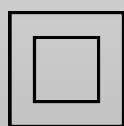
Cardboard box,
 (L/W/H): 130/46/36 cm

Gross weight: 8 kg

Light source:

1x E27 ST64 Edison vintage LED bulb
 6.5W, 700lm, 2200-2500K

(Other light bulbs may be available on request)



Class II /
 Double insulated



220-240V
 ~50/60Hz



Indoor use



CE-Mark