



originalhome
100% ECO DESIGN



SUSTAINABLE DESIGN LAMPS AND SHADES AW25/26

SUSTAINABLE DESIGN LAMPS AND SHADES

made from
renewable and
recycled materials

All originalhome lamps and shades are made with the smallest footprint on the earth in mind. Their organic designs are entirely handmade from specially selected sustainable materials. The low impact production process combined with people friendly trade make them the better alternative to decorate a home, office, or any other spaces. The wide collection offers a variety of models to fit any interior style. The sustainable design lampshades can be used as a statement piece in a room or light up a hidden corner.

- ☐ Made from sustainable materials
- ☐ Ethically sourced
- ☐ Multifunctional design
- ☐ High quality
- ☐ In/outdoor use



Read more about
our origins

New

LAMPS AND SHADES THAT SAVE THE OCEAN FROM PLASTIC WASTE

Made from recycled plastic waste, collected near the coast and from the ocean.



Indoor and outdoor use



THE STORY



About 80% of ocean plastic comes from land via rivers or coastlines due to poor waste management, harming biodiversity and spreading toxins.

Coastal cleanups are crucial.

Originalhome sources plastic waste from a coastal clean-up project in Java, Indonesia that incentivizes locals to collect plastic waste.



Coastal plastic waste is recycled into strings using simple machinery. This process perfectly supports small local businesses.

The recycled plastic strings are traditionally handcrafted into lampshades

by our lamp makers. This low impact process provides jobs in rural east Java Indonesia.



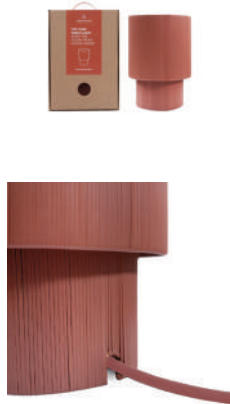
By combining innovative use of waste materials with modern, clean design the originalhome in & outdoor lampshade gives plastic waste a 2nd life!



DE / FR / IT / NL / EN 5

Read more





The Tube

SL0061.00

Colour	Article no	EAN code	Diameter Ø	Height	Weight
Natural	SL0061.01	8719632002185	20,0 cm	28,0 cm	0,8 kg
Terra	SL0061.02	8719632002192	20,0 cm	28,0 cm	0,8 kg
Moss	SL0061.03	8719632002208	20,0 cm	28,0 cm	0,8 kg
Honey	SL0061.04	8719632002215	20,0 cm	28,0 cm	0,8 kg
Off-White	SL0061.05	8719632002222	20,0 cm	28,0 cm	0,8 kg
Sea Green	SL0061.06	8719632002239	20,0 cm	28,0 cm	0,8 kg

Sales Unit	Material	Remark	Fitting
2	100% Recycled coastal PE plastics with iron frame	Suitable for indoor and outdoor use. Can be used as a pendant or table lamp. Cables available separately.	E27
Package info 0,011m ³ (20,0 x 20,0 x 28,0 cm) / 0,5 kg			





Lampion Carry-on

SL0060.00

Colour	Article no	EAN code	Diameter Ø	Height	Weight
Natural	SL0060.01	8719632001430	20,0 cm	30,0 cm	0,5 kg
Green	SL0060.02	8719632001447	20,0 cm	30,0 cm	0,5 kg
Terra	SL0060.03	8719632001454	20,0 cm	30,0 cm	0,5 kg
Honey	SL0060.04	8719632001461	20,0 cm	30,0 cm	0,5 kg
Grey	SL0060.05	8719632001478	20,0 cm	30,0 cm	0,5 kg
Blossom	SL0060.06	8719632001485	20,0 cm	30,0 cm	0,5 kg
Moss	SL0060.07	8719632001492	20,0 cm	30,0 cm	0,5 kg

Sales Unit

2

Material

100% Recycled coastal
PE plastics with iron
frame

Package info

0,012m³ (20,0 x 20,0 x 30,0 cm) / 0,5 kg

Remark

Suitable for indoor and
outdoor use. Can be used as a
pendant or table lamp.
Outdoor solar panel accessory
and cable available separately.

Fitting

E27





Lampion Recycled Natural no 1

SL0056.00

Size	Article no	EAN code	Diameter Ø	Height	Weight
Small	SL0056.01	6097212663622	30,0 cm	36,0 cm	0,8 kg
Medium	SL0056.02	6097209278242	40,0 cm	46,0 cm	1,4 kg
Large	SL0056.03	6097200339362	46,0 cm	54,0 cm	1,55 kg

Sales Unit	Colour	Material	Fitting
1	Natural	100% Recycled coastal PE plastics with iron frame	E27

Remark

Suitable for indoor and outdoor use. Outdoor solar panel accessory and cables available separately. Can be used as a pendant or table lamp.



Lampion Recycled Terra no 1

SL0056.10

Size	Article no	EAN code	Diameter Ø	Height	Weight
Small	SL0056.11	6097257819817	30,0 cm	36,0 cm	0,8 kg
Medium	SL0056.12	6097206612643	40,0 cm	46,0 cm	1,4 kg
Large	SL0056.13	6097217333377	46,0 cm	54,0 cm	1,55 kg

Sales Unit	Colour	Material	Fitting
1	Terra	100% Recycled coastal PE plastics with iron frame	E27

Remark

Suitable for indoor and outdoor use. Outdoor solar panel accessory and cables available separately. Can be used as a pendant or table lamp.





Lampion Recycled Green no 1

SL0056.20

Size	Article no	EAN code	Diameter Ø	Height	Weight
Small	SL0056.21	6097204254296	30,0 cm	36,0 cm	0,8 kg
Medium	SL0056.22	6097200694645	40,0 cm	46,0 cm	1,4 kg
Large	SL0056.23	6097210328394	46,0 cm	54,0 cm	1,55 kg

Sales Unit	Colour	Material	Fitting
1	Green	100% Recycled coastal PE plastics with iron frame	E27

Remark

Suitable for indoor and outdoor use. Outdoor solar panel accessory and cables available separately. Can be used as a pendant or table lamp.



Lampion Recycled Anthracite no 1

SL0056.30

Size	Article no	EAN code	Diameter Ø	Height	Weight
Small	SL0056.31	6097247865879	30,0 cm	36,0 cm	0,8 kg
Medium	SL0056.32	6097200186171	40,0 cm	46,0 cm	1,4 kg
Large	SL0056.33	6097229680636	46,0 cm	54,0 cm	1,55 kg

Sales Unit	Colour	Material	Fitting
1	Anthracite	100% Recycled coastal PE plastics with iron frame	E27

Remark

Suitable for indoor and outdoor use. Outdoor solar panel accessory and cables available separately. Can be used as a pendant or table lamp.



Lampion Recycled Honey no 1

SL0056.40

Size	Article no	EAN code	Diameter Ø	Height	Weight
Small	SL0056.41	6097210916997	30,0 cm	36,0 cm	0,8 kg
Medium	SL0056.42	6097215714772	40,0 cm	46,0 cm	1,4 kg

Sales Unit	Colour	Material	Fitting
1	Honey	100% Recycled coastal PE plastics with iron frame	E27

Remark

Suitable for indoor and outdoor use. Outdoor solar panel accessory and cables available separately. Can be used as a pendant or table lamp.



Lampion Recycled Sea Green no 1

SL0056.50

Size	Article no	EAN code	Diameter Ø	Height	Weight
Small	SL0056.51	6097201720732	30,0 cm	36,0 cm	0,8 kg
Medium	SL0056.52	6097207014002	40,0 cm	46,0 cm	1,4 kg

Sales Unit	Colour	Material	Fitting
1	Sea Green	100% Recycled coastal PE plastics with iron frame	E27

Remark

Suitable for indoor and outdoor use. Outdoor solar panel accessory and cables available separately. Can be used as a pendant or table lamp.





Lampion Recycled Natural no 2

SL0057.00

Colour	Article no	EAN code	Diameter Ø	Height	Weight
Small	SL0057.01	6097216096037	37,0 cm	32,0 cm	1,0 kg
Medium	SL0057.02	6097200405401	43,0 cm	42,0 cm	1,4 kg

Sales Unit	Colour	Material	Fitting
1	Natural	100% Recycled coastal PE plastics with iron frame	E27

Remark

Suitable for indoor and outdoor use. Outdoor solar panel accessory and cables available separately. Can be used as a pendant or table lamp.



Lampion Recycled Terra no 2

SL0057.10

Colour	Article no	EAN code	Diameter Ø	Height	Weight
Small	SL0057.11	6097225748729	37,0 cm	32,0 cm	1,0 kg
Medium	SL0057.12	6097200293268	43,0 cm	42,0 cm	1,4 kg

Sales Unit	Colour	Material	Fitting
1	Terra	100% Recycled coastal PE plastics with iron frame	E27

Remark

Suitable for indoor and outdoor use. Outdoor solar panel accessory and cables available separately. Can be used as a pendant or table lamp.



Lampion Recycled Green no 2

SL0057.20

Colour	Article no	EAN code	Diameter Ø	Height	Weight
Small	SL0057.21	6097204098098	37,0 cm	32,0 cm	1,0 kg
Medium	SL0057.22	6097200976925	43,0 cm	42,0 cm	1,4 kg

Sales Unit	Colour	Material	Fitting
1	Green	100% Recycled coastal PE plastics with iron frame	E27

Remark

Suitable for indoor and outdoor use. Outdoor solar panel accessory and cables available separately. Can be used as a pendant or table lamp.



Lampion Recycled Anthracite no 2

SL0057.30

Colour	Article no	EAN code	Diameter Ø	Height	Weight
Small	SL0057.31	6097200127105	37,0 cm	32,0 cm	1,0 kg
Medium	SL0057.32	6097216487415	43,0 cm	42,0 cm	1,4 kg

Sales Unit	Colour	Material	Fitting
1	Anthracite	100% Recycled coastal PE plastics with iron frame	E27

Remark

Suitable for indoor and outdoor use. Outdoor solar panel accessory and cables available separately. Can be used as a pendant or table lamp.



Lampion Recycled Honey no 2

SL0057.40

Colour	Article no	EAN code	Diameter Ø	Height	Weight
Small	SL0057.41	6097202838894	37,0 cm	32,0 cm	1,0 kg
Medium	SL0057.42	6097212130186	43,0 cm	42,0 cm	1,4 kg

Sales Unit	Colour	Material	Fitting
1	Honey	100% Recycled coastal PE plastics with iron frame	E27

Remark

Suitable for indoor and outdoor use. Outdoor solar panel accessory and cables available separately. Can be used as a pendant or table lamp.



Lampion Recycled Sea Green no 2

SL0057.50

Colour	Article no	EAN code	Diameter Ø	Height	Weight
Small	SL0057.51	6097204050089	37,0 cm	32,0 cm	1,0 kg
Medium	SL0057.52	6097204233222	43,0 cm	42,0 cm	1,4 kg

Sales Unit	Colour	Material	Fitting
1	Sea Green	100% Recycled coastal PE plastics with iron frame	E27

Remark

Suitable for indoor and outdoor use. Outdoor solar panel accessory and cables available separately. Can be used as a pendant or table lamp.





Lampion Recycled Natural no 3

SL0058.00

Colour	Article no	EAN code	Diameter Ø	Height	Weight
Small	SL0058.01	6097201033009	31,0 cm	36,0 cm	0,8 kg
Medium	SL0058.02	6097201565517	38,0 cm	46,0 cm	1,4 kg

Sales Unit	Colour	Material	Fitting
1	Natural	100% Recycled coastal PE plastics with iron frame	E27

Remark

Suitable for indoor and outdoor use. Outdoor solar panel accessory and cables available separately. Can be used as a pendant or table lamp.



Lampion Recycled Terra no 3

SL0058.10

Colour	Article no	EAN code	Diameter Ø	Height	Weight
Small	SL0058.11	6097204866840	31,0 cm	36,0 cm	0,8 kg
Medium	SL0058.12	6097203897845	38,0 cm	46,0 cm	1,4 kg

Sales Unit	Colour	Material
1	Terra	100% Recycled coastal PE plastics with iron frame

Remark

Suitable for indoor and outdoor use. Outdoor solar panel accessory and cables available separately. Can be used as a pendant or table lamp.



Lampion Recycled Green no 3

SL0058.20

Colour	Article no	EAN code	Diameter Ø	Height	Weight
Small	SL0058.21	6097200296283	31,0 cm	36,0 cm	0,8 kg
Medium	SL0058.22	6097204616650	38,0 cm	46,0 cm	1,4 kg

Sales Unit	Colour	Material	Fitting
1	Green	100% Recycled coastal PE plastics with iron frame	E27

Remark

Suitable for indoor and outdoor use. Outdoor solar panel accessory and cables available separately. Can be used as a pendant or table lamp.



Lampion Recycled Anthracite no 3

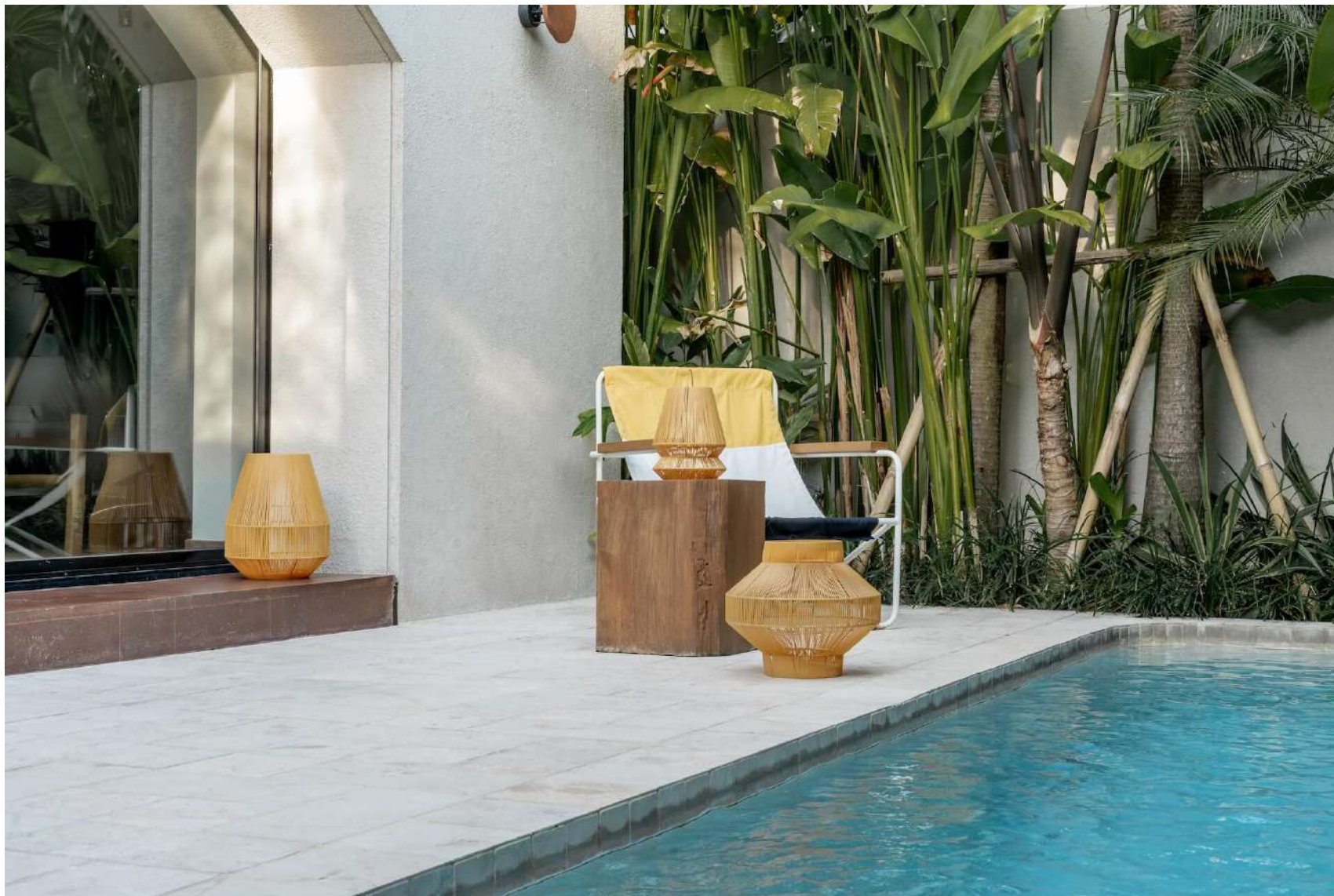
SL0058.30

Colour	Article no	EAN code	Diameter Ø	Height	Weight
Small	SL0058.31	6097203567533	31,0 cm	36,0 cm	0,8 kg
Medium	SL0058.32	6097213611677	38,0 cm	46,0 cm	1,4 kg

Sales Unit	Colour	Material
1	Anthracite	100% Recycled coastal PE plastics with iron frame

Remark

Suitable for indoor and outdoor use. Outdoor solar panel accessory and cables available separately. Can be used as a pendant or table lamp.





Lampion Recycled Honey no 3

SL0058.40

Colour	Article no	EAN code	Diameter Ø	Height	Weight
Small	SL0058.41	6097217815873	31,0 cm	36,0 cm	0,8 kg

Sales Unit	Colour	Material	Fitting
1	Honey	100% Recycled coastal PE plastics with iron frame	E27

Remark

Suitable for indoor and outdoor use. Outdoor solar panel accessory and cables available separately. Can be used as a pendant or table lamp.



Lampion Recycled Sea Green no 3

SL0058.50

Colour	Article no	EAN code	Diameter Ø	Height	Weight
Small	SL0058.51	6097212281253	31,0 cm	36,0 cm	0,8 kg

Sales Unit	Colour	Material
1	Sea Green	100% Recycled coastal PE plastics with iron frame

Remark

Suitable for indoor and outdoor use. Outdoor solar panel accessory and cables available separately. Can be used as a pendant or table lamp.





Pebble Recycled Beige - Set 3

SL0054.00

Size	Article no	EAN code	Diameter Ø	Height	Weight
Small	SL0054.01	6097210048032	44,0 cm	23,0 cm	0,9 kg
Medium	SL0054.02	6097201060036	54,0 cm	25,0 cm	1,2 kg
Large	SL0054.03	6097219099097	66,0 cm	33,0 cm	1,5 kg

Sales Unit	Colour	Material	Fitting
Set 3 (S,M,L)	Beige	100% Recycled coastal PE plastics with iron frame	E27

Package info
0,157115 m³ (66,0 x 66,0 x 33,0 cm) / 3,5 kg

Remark
Suitable for indoor and outdoor use.
Cables available separately.



Pebble Recycled Anthracite - Set 3

SL0054.10

Size	Article no	EAN code	Diameter Ø	Height	Weight
Small	SL0054.11	6097224259271	44,0 cm	23,0 cm	0,9 kg
Medium	SL0054.12	6097222472481	54,0 cm	25,0 cm	1,2 kg
Large	SL0054.13	6097217019011	66,0 cm	33,0 cm	1,5 kg

Sales Unit	Colour	Material	Fitting
Set 3 (S,M,L)	Anthracite	100% Recycled coastal PE plastics with iron frame	E27

Package info
0,157115 m³ (66,0 x 66,0 x 33,0 cm) / 3,5 kg

Remark
Suitable for indoor and outdoor use.
Cables available separately.



Juara Recycled Swirl

Colour	Article no	EAN code	Diameter Ø	Height	Weight
Natural	SL0059.01	6097201123199	45,0 cm	51,0 cm	1,5 kg
Green	SL0059.02	6097216238246	45,0 cm	51,0 cm	1,5 kg
Antracite	SL0059.03	6097205874868	45,0 cm	51,0 cm	1,5 kg
Terra	SL0059.04	8719632001416	45,0 cm	51,0 cm	1,5 kg
Grey	SL0059.05	8719632001423	45,0 cm	51,0 cm	1,5 kg

Sales Unit	Colour	Material	Fitting
1	Natural, Green, Antracite, Terra, Grey	100% Recycled coastal PE plastics with iron frame	E27

Package info	Remark
0,072897 m³ (45,0 x 45,0 x 51,0 cm) / 1,5 kg	Suitable for indoor and outdoor use. Outdoor solar panel accessory and cables available separately.





Bawang Recycled Natural - S3

SL0051.00

Size	Article no	EAN code	Diameter Ø	Height	Weight
Small	SL0051.01	6097210865882	36,0 cm	41,0 cm	0,9 kg
Medium	SL0051.02	6097200965912	46,0 cm	51,0 cm	1,4 kg
Large	SL0051.03	6097204225258	56,0 cm	61,0 cm	1,8 kg

Sales Unit	Colour	Material	Fitting
Set 3 (S,M,L)	Natural	100% Recycled coastal PE plastics with iron frame	E27

Package info	Remark
0,21866 m ³ (57,0 x 57,0 x 62,0 cm) / 6,2 kg	Suitable for indoor and outdoor use. Cables available separately.





Bawang Recycled Black - Set 3

SL0051.10

Size	Article no	EAN code	Diameter Ø	Height	Weight
Small	SL0051.11	6097210211221	36,0 cm	41,0 cm	0,9 kg
Medium	SL0051.12	6097221869824	46,0 cm	51,0 cm	1,4 kg
Large	SL0051.13	6097200242266	56,0 cm	61,0 cm	1,8 kg

Sales Unit	Colour	Material	Fitting
Set 3 (S,M,L)	Black	100% Recycled coastal PE plastics with iron frame	E27

Package info
0,21866 m³ (57,0 x 57,0 x 62,0 cm) / 6,2 kg

Remark
Suitable for indoor and outdoor use.
Cables available separately.



Bawang Recycled Green - Set 3

SL0051.40

Size	Article no	EAN code	Diameter Ø	Height	Weight
Small	SL0051.41	6097202657662	36,0 cm	41,0 cm	0,9 kg
Medium	SL0051.42	6097203492484	46,0 cm	51,0 cm	1,4 kg
Large	SL0051.43	6097212282267	56,0 cm	61,0 cm	1,8 kg

Sales Unit	Colour	Material	Fitting
Set 3 (S,M,L)	Green	100% Recycled coastal PE plastics with iron frame	E27

Package info
0,21866 m³ (57,0 x 57,0 x 62,0 cm) / 6,2 kg

Remark
Suitable for indoor and outdoor use.
Cables available separately.





Moon Recycled Natural - Set 3

SL0052.00

Size	Article no	EAN code	Diameter Ø	Height	Weight
Small	SL0052.01	6097206791799	40,5 cm	51,0 cm	1,2 kg
Medium	SL0052.02	6097220620655	50,0 cm	60,0 cm	1,6 kg
Large	SL0052.03	6097207045006	60,0 cm	70,0 cm	2,2 kg

Sales Unit	Colour	Material	Fitting
Set 3 (S,M,L)	Natural	100% Recycled coastal PE plastics with iron frame	E27

Package info
0,322344 m³ (60,0 x 60,0 x 70,0 cm) / 8,6 kg

Remark
Suitable for indoor and outdoor use. Cables available separately. Can be used as a pendant or floor lamp.



Moon Recycled Anthracite - Set 3

SL0052.10

Size	Article no	EAN code	Diameter Ø	Height	Weight
Small	SL0052.11	6097207963997	40,5 cm	51,0 cm	1,2 kg
Medium	SL0052.12	6097204047065	50,0 cm	60,0 cm	1,6 kg
Large	SL0052.13	6097208247256	60,0 cm	70,0 cm	2,2 kg

Sales Unit	Colour	Material	Fitting
Set 3 (S,M,L)	Anthracite	100% Recycled coastal PE plastics with iron frame	E27

Package info
0,322344 m³ (60,0 x 60,0 x 70,0 cm) / 8,6 kg

Remark
Suitable for indoor and outdoor use. Cables available separately. Can be used as a pendant or floor lamp.



Moon Recycled Green - S3

SL0052.40

Size	Article no	EAN code	Diameter Ø	Height	Weight
Small	SL0052.41	6097226850858	40,5 cm	51,0 cm	1,2 kg
Medium	SL0052.42	6097201657670	50,0 cm	60,0 cm	1,6 kg
Large	SL0052.43	6097223821813	60,0 cm	70,0 cm	2,2 kg

Sales Unit	Colour	Material	Fitting
Set 3 (S,M,L)	Green	100% Recycled coastal PE plastics with iron frame	E27

Package info
0,322344 m³ (60,0 x 60,0 x 70,0 cm) / 8,6 kg

Remark
Suitable for indoor and outdoor use. Cables available separately. Can be used as a pendant or floor lamp.



Moon Small Recycled Natural - Set 3

SL0053.00

Size	Article no	EAN code	Diameter Ø	Height	Weight
Small	SL0053.01	6097203945935	19,0 cm	28,0 cm	0,6 kg
Medium	SL0053.02	6097230441493	31,0 cm	37,0 cm	1,0 kg
Large	SL0053.03	6097222565572	41,0 cm	52,0 cm	1,9 kg

Sales Unit	Colour	Material	Fitting
Set 3 (S,M,L)	Natural	100% Recycled coastal PE plastics with iron frame	E27

Package info
0,119286 m³ (41,0 x 41,0 x 52,0 cm) / 4,9 kg

Remark
Suitable for indoor and outdoor use. Cables available separately. Can be used as a pendant or floor lamp.





Moon Recycled Anthracite - S3

SL0053.10

Size	Article no	EAN code	Diameter Ø	Height	Weight
Small	SL0053.11	6097209756788	19,0 cm	28,0 cm	0,6 kg
Medium	SL0053.12	6097200415462	31,0 cm	37,0 cm	1,0 kg
Large	SL0053..13	6097205625606	41,0 cm	52,0 cm	1,9 kg

Sales Unit	Colour	Material	Fitting
Set 3 (S,M,L)	Anthracite	100% Recycled coastal PE plastics with iron frame	E27

Package info
0,119286 m³ (41,0 x 41,0 x 52,0 cm) / 4,9 kg

Remark
Suitable for indoor and outdoor use. Cables available separately. Can be used as a pendant or floor lamp.



Moon Small Recycled Green - S3

SL0053.40

Size	Article no	EAN code	Diameter Ø	Height	Weight
Small	SL0053.41	6097201853829	19,0 cm	28,0 cm	0,6 kg
Medium	SL0053.42	6097249960954	31,0 cm	37,0 cm	1,0 kg
Large	SL0053.43	6097200122193	41,0 cm	52,0 cm	1,9 kg

Sales Unit	Colour	Material	Fitting
Set 3 (S,M,L)	Green	100% Recycled coastal PE plastics with iron frame	E27

Package info
0,119286 m³ (41,0 x 41,0 x 52,0 cm) / 4,9 kg

Remark
Suitable for indoor and outdoor use. Cables available separately. Can be used as a pendant or floor lamp.

RATTAN LAMP SHADES

The rattan lampshades convince through their clean and organic design. They represent a great blend of texture and contemporary shapes. Rattan lampshades combine well in a Scandinavian, Boho, Bali chic or any modern interior style.

Materials & Production

Rattan is a strong natural fiber. It grows abundantly and naturally without any fertilizers or pesticides and improves biodiversity by co-existing with other vegetation. Only the lianas of the rattan are used to make the lamps so the tree is not cut and can be harvested for several decades without harming the environment around it. The entire production process, from harvesting to designing is executed by hand.

The makers

Wawan and Navi used to sell their homemade lampshades from a small shop on Bali, Indonesia. Since we started working together their workshop has moved to East Java, Indonesia, where they have created jobs for at least 20 weavers from neighbouring villages. They participate in the originalhome sustainable entrepreneur development program.





Lampshade Bawang Natural - S3

SL0013.00

Size	Article no	EAN code	Diameter Ø	Height	Weight
Small	SL0013.01	8719632004226	36,0 cm	41,0 cm	0,7 kg
Medium	SL0013.02	8719632004233	46,0 cm	51,0 cm	0,9 kg
Large	SL0013.03	8719632004240	56,0 cm	61,0 cm	1,1 kg

Sales Unit	Colour	Material	Fitting
Set 3 (S, M, L)	Natural	Rattan core with iron frame	E27

Package info
0,215296 m³ (57,0 x 57,0 x 62,0 cm) / 4,7 kg

Remark
Cables available separately.



Lampshade Bawang Black - Set 3

SL0013.10

Size	Article no	EAN code	Diameter Ø	Height	Weight
Small	SL0013.11	8719632004264	36,0 cm	41,0 cm	0,7 kg
Medium	SL0013.12	8719632004271	46,0 cm	51,0 cm	0,9 kg
Large	SL0013.13	8719632004288	56,0 cm	61,0 cm	1,1 kg

Sales Unit	Colour	Material	Fitting
Set 3 (S, M, L)	Black	Rattan core with iron frame	E27

Package info
0,215296 m³ (57,0 x 57,0 x 62,0 cm) / 4,7 kg

Remark
Cables available separately.



Lampshade Lentera - Set 3

SL0027.00

Size	Article no	EAN code	Diameter Ø	Height	Weight
Small	SL0027.01	8719632007203	30,0 cm	43,0 cm	0,9 kg
Medium	SL0027.02	8719632007210	40,0 cm	56,0 cm	1,2 kg
Large	SL0027.03	8719632007227	54,0 cm	75,0 cm	1,8 kg

Sales Unit	Colour	Material	Fitting
Set 3 (S, M, L)	Natural	Rattan core with iron frame	E27

Package info
0,2299 m³ (54,0 x 54,0 x 75,0 cm) / 5,7 kg

Remark
Cables available separately. Can be used as a pendant or floor lamp.



Lampshade Lentera Black - Set 3

SL0027.10

Size	Article no	EAN code	Diameter Ø	Height	Weight
Small	SL0027.11	8719632007241	30,0 cm	43,0 cm	0,9 kg
Medium	SL0027.12	8719632007258	40,0 cm	56,0 cm	1,2 kg
Large	SL0027.13	8719632007265	54,0 cm	75,0 cm	1,8 kg

Sales Unit	Colour	Material	Fitting
Set 3 (S, M, L)	Black	Rattan core with iron frame	E27

Package info
0,2299 m³ (54,0 x 54,0 x 75,0 cm) / 5,7 kg

Remark
Cables available separately. Can be used as a pendant or floor lamp.



Lampshade Moon Natural - Set 3

SL0014.00

Size	Article no	EAN code	Diameter Ø	Height	Weight
Small	SL0014.01	8719632004301	40,5 cm	51,0 cm	1,2 kg
Medium	SL0014.02	8719632004318	50,0 cm	60,0 cm	1,7 kg
Large	SL0014.03	8719632004325	60,0 cm	70,0 cm	2,2 kg

Sales Unit	Colour	Material	Fitting
Set 3 (S, M, L)	Natural	Rattan core with iron frame	E27

Package info
0,322344 m³ (60,0 x 60,0 x 70,0 cm) / 8,6 kg

Remark
Cables available separately. Can be used as a pendant or floor lamp.



Lampshade Moon Black - Set 3

SL0014.10

Size	Article no	EAN code	Diameter Ø	Height	Weight
Small	SL0014.11	8719632004349	40,5 cm	51,0 cm	1,2 kg
Medium	SL0014.12	8719632004356	50,0 cm	60,0 cm	1,7 kg
Large	SL0014.13	8719632004363	60,0 cm	70,0 cm	2,2 kg

Sales Unit	Colour	Material	Fitting
Set 3 (S, M, L)	Black	Rattan core with iron frame	E27

Package info
0,322344 m³ (60,0 x 60,0 x 70,0 cm) / 8,6 kg

Remark
Cables available separately. Can be used as a pendant or floor lamp.





Lampshade Moon Small Natural - Set 3

SL0034.00

Size	Article no	EAN code	Diameter Ø	Height	Weight
Small	SL0034.01	8719632009917	18,0 cm	26,0 cm	0,6 kg
Medium	SL0034.02	8719632009924	27,0 cm	37,0 cm	0,6 kg
Large	SL0034.03	8719632009931	42,0 cm	48,0 cm	1,2 kg

Sales Unit	Colour	Material	Fitting
Set 3 (S, M, L)	Natural	Rattan core with iron frame	E27

Package info

0,069312 m³ (42,0 x 42,0 x 48,0 cm) / 3,6 kg

Remark

Cables available separately. Can be used as a pendant or floor lamp.



Lampshade Moon Small Black - Set 3

SL0034.10

Size	Article no	EAN code	Diameter Ø	Height	Weight
Small	SL0034.11	8719632009849	18,0 cm	26,0 cm	0,6 kg
Medium	SL0034.12	8719632009856	27,0 cm	37,0 cm	0,6 kg
Large	SL0034.13	8719632009863	42,0 cm	48,0 cm	1,2 kg

Sales Unit	Colour	Material	Fitting
Set 3 (S, M, L)	Black	Rattan core with iron frame	E27

Package info

0,069312 m³ (42,0 x 42,0 x 48,0 cm) / 3,6 kg

Remark

Cables available separately. Can be used as a pendant or floor lamp.



Lampshade Ikal Natural - Set 3

SL0030.00

Size	Article no	EAN code	Diameter Ø	Height	Weight
Small	SL0030.01	8719632007951	50,0 cm	33,0 cm	1,0 kg
Medium	SL0030.02	8719632007968	55,0 cm	36,0 cm	1,2 kg
Large	SL0030.03	8719632007975	67,0 cm	42,0 cm	1,4 kg

Sales Unit	Colour	Material	Fitting
Set 3 (S, M, L)	Natural	Rattan core with iron frame	E27

Package info
0,250463 m³ (67,0 x 67,0 x 42,0 cm) / 4,8 kg

Remark
Cables available separately. Can be used as a pendant or floor lamp.



Lampshade Ikal Black - Set 3

SL0030.10

Size	Article no	EAN code	Diameter Ø	Height	Weight
Small	SL0030.11	8719632008187	50,0 cm	33,0 cm	1,0 kg
Medium	SL0030.12	8719632008194	55,0 cm	36,0 cm	1,2 kg
Large	SL0030.13	8719632008200	67,0 cm	42,0 cm	1,4 kg

Sales Unit	Colour	Material	Fitting
Set 3 (S, M, L)	Black	Rattan core with iron frame	E27

Package info
0,250463 m³ (67,0 x 67,0 x 42,0 cm) / 4,8 kg

Remark
Cables available separately. Can be used as a pendant or floor lamp.



Lampshade Globe Natural - Set 3

SL0035.00

Size	Article no	EAN code	Diameter Ø	Height	Weight
Small	SL0035.01	8719632009184	32,0 cm	23,0 cm	0,6 kg
Medium	SL0035.02	8719632009191	43,0 cm	32,0 cm	1,0 kg
Large	SL0035.03	8719632009207	60,0 cm	42,0 cm	1,4 kg

Sales Unit

Set 3 (S, M, L)

Colour

Natural

Material

Rattan core with iron frame

Fitting

E27

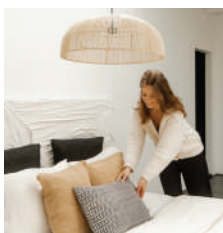
Package info

0,169136 m³ (60,0 x 60,0 x 42,0 cm) / 4,7 kg

Remark

Cables available separately.





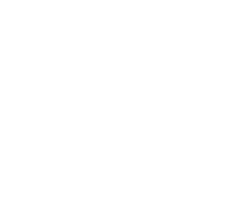
Lampshade Solar 1

SL0028.01

Size	Article no	EAN code	Diameter Ø	Height	Weight
One size	SL0028.01	8719632007913	60,0 cm	22,0 cm	2,1 kg

Sales Unit	Colour	Material	Fitting
2	Natural	Rattan core with iron frame	E27

Package info	Remark
0,123008 m ³ (60,0 x 60,0 x 22,0 cm) / 3,7 kg	Cables available separately.



Lampshade Solar 2

SL0028.02

Size	Article no	EAN code	Diameter Ø	Height	Weight
One size	SL0028.02	8719632007920	60,0 cm	22,0 cm	2,1 kg

Sales Unit	Colour	Material	Fitting
2	Natural	Rattan core with iron frame	E27

Package info	Remark
0,123008 m ³ (60,0 x 60,0 x 22,0 cm) / 3,7 kg	Cables available separately.





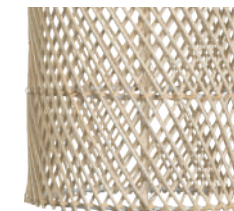
Lampshade Fei 01

Colour	Article no	EAN code	Diameter Ø	Height	Weight
Natural	SL0017.01	8719632005025	19,0 cm	43,0 cm	1,1 kg
Black	SL0017.11	8719632005056	19,0 cm	43,0 cm	1,1 kg

Sales Unit	Colour	Material	Fitting
4	Natural, Black	Rattan core with iron frame	E27

Package info
0,0748045 m³ (41,0 x 41,0 x 44,5 cm) / 3,2 kg

Remark
Cables available separately.



Lampshade Fei 02

Colour	Article no	EAN code	Diameter Ø	Height	Weight
Natural	SL0017.02	8719632005032	19,0 cm	43,0 cm	1,1 kg
Black	SL0017.12	8719632005063	19,0 cm	43,0 cm	1,1 kg

Sales Unit	Colour	Material	Fitting
4	Natural, Black	Rattan core with iron frame	E27

Package info
0,0748045 m³ (41,0 x 41,0 x 44,5 cm) / 3,2 kg

Remark
Cables available separately.



Lampshade Tube Tall Natural - Set 3

SL0038.00

Size	Article no	EAN code	Diameter Ø	Height	Weight
Small	SL0038.01	8719632009313	20,0 cm	28,0 cm	0,6 kg
Medium	SL0038.02	8719632009320	25,0 cm	35,0 cm	0,8 kg
Large	SL0038.03	8719632009337	32,0 cm	45,0 cm	1,2 kg

Sales Unit	Colour	Material	Fitting
Set 3 (S, M, L)	Natural	Rattan core with iron frame	E27

Package info

0,057575 m³ (32,0 x 32,0 x 45,0 cm) / 4,0 kg

ABACA LAMP SHADES

Abaca lampshades are perfect to achieve a more organic look & feel in an interior. The leafy materials add texture to the lampshade and combined with the handmade organic shapes they bring nature home.

Materials & Production

Abaca is a strong natural fiber that is derived from the bark of a banana tree from small banana plantations of Java, Indonesia. Abaca is a waste product from the banana plantations. A banana tree matures in 9 months, making it a quickly renewable resource. Because it only produces its fruits once, the trees are cut after one year to regrow. The bark is stripped and this material is given a second life by weaving lampshades and baskets out of it. The entire production process is executed by hand.

The makers

Johni & Lola are sustainable pioneers from origin. They founded their company in 1995 and out of respect for the natural resources of Java. They solely use natural, sustainable raw materials for the production of home decoration and use all materials as efficiently as possible. As true pioneers, they developed multiple ways to recycle and apply new materials such as newspapers and old cement bag paper. Currently, 30 people are working for them from different workshop locations in Java, Indonesia.





Abaca Organic Pendant Natural - Set 2

SL0012.00

Size	Article no	EAN code	Diameter Ø	Height	Weight
Medium	SL0012.02	8719632004875	45,0 cm	51,0 cm	1,8 kg
Large	SL0012.03	8719632004882	55,0 cm	70,0 cm	2,5 kg

Sales Unit	Colour	Material	Fitting
Set (M, L)	Natural	Abaca/Banana tree fibres with iron frame	E27

Package info

0,241472 m³ (57,0 x 57,0 x 75,0 cm) / 5,3 kg



Abaca Organic Pendant Black - Set 2

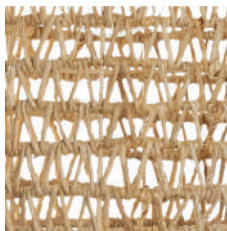
SL0012.10

Size	Article no	EAN code	Diameter Ø	Height	Weight
Medium	SL0012.12	8719632004899	45,0 cm	51,0 cm	1,8 kg
Large	SL0012.13	8719632004905	55,0 cm	70,0 cm	2,5 kg

Sales Unit	Colour	Material	Fitting
Set 2 (M, L)	Black	Abaca/Banana tree fibres with iron frame	E27

Package info

0,241472 m³ (57,0 x 57,0 x 75,0 cm) / 5,3 kg



Pendant Kai Natural

SL0023.00

Size	Article no	EAN code	Diameter Ø	Height	Weight
One size	SL0023.00	8719632007098	30,0 cm	57,0 cm	1,3 kg

Sales Unit	Colour	Material	Fitting
2	Natural	Abaca/Banana tree fibres with iron frame	E27

Package info

0,03174 m³ (23,0 x 23,0 x 60,0 cm) / 2,2 kg



RECLAIMED TEAK LAMPSHADES

The lampshades made from reclaimed teak are durable and can last a lifetime. The clean yet organic design adds a natural earthy look & feel to any style interior. Due to the natural and organic drawings in the wood, every lampshade is unique.

Materials & Production

The raw material that is used for the wooden lampshades comes from the root of a teak tree: a waste product from the teak plantations in Java, Indonesia. Teak root is discarded wood and must be unearthed for new plantings. The roots are collected, cleaned and traditionally handcrafted into lampshades by local villagers. Teak root wood is very durable and sustainable. It will last a lifetime.

The makers

The teakroot lampshades are designed and packed in a small design workshop in Indonesia. The workshop was founded to repurpose waste wood and to support local communities by creating job opportunities. The wood-crafting workshop is based in East Java, Indonesia and provides jobs for marginalized people; teaching them a craft and providing structure and income.





Lampshade Teak Kompor

Size	Article no	EAN code	Diameter Ø	Height	Weight
Small	SL0040.01	8719632009542	10,0 cm	12,0 cm	0,4 kg
Medium	SL0040.02	8719632009559	12,5 cm	12,0 cm	0,7 kg

Sales Unit	Colour	Material	Fitting
1	Natural	Reclaimed teak	E27

Package info

S - 0,002366 m³ (10,5 x 10,5 x 12,7 cm) / 0,4 kg
 M - 0,00315 m³ (12,5 x 12,5 x 12,7 cm) / 0,8 kg



Lampshade Teak Kubah

SL0041.00

Size	Article no	EAN code	Diameter Ø	Height	Weight
One size	SL0041.00	8719632009573	14,0 cm	12,0 cm	1,5 kg

Sales Unit	Colour	Material	Fitting
1	Natural	Reclaimed teak	E27

Package info

0,00384 m³ (14,5 x 14,5 x 12,7 cm) / 1,8 kg





Lampshade Tiga

SL0042.00

Size	Article no	EAN code	Diameter Ø	Height	Weight
One size	SL0042.00	8719632009580	18,0 cm	12,0 cm	1,5 kg

Sales Unit	Colour	Material	Fitting
1	Natural	Reclaimed teak	E27

Package info
0,0056 m³ (18,5 x 18,5 x 12,7 cm) / 1,8 kg



Lampshade Botol

SL0043.00

Size	Article no	EAN code	Diameter Ø	Height	Weight
One size	SL0043.00	8719632009597	14,0 cm	22,0 cm	1,5 kg

Sales Unit	Colour	Material	Fitting
1	Natural	Reclaimed teak	E27

Package info
0,006144 m³ (14,5 x 14,5 x 22,7 cm) / 1,8 kg



TECHNICAL SHEET

Electricals

Electricity cables are not supplied as standard but are available on request. Customization is possible. Contact customer@originalhome.nl

Indoor/Outdoor

Originalhome lampshades are suitable for both indoor and outdoor use. However, to lengthen the lifetime of our products it is recommended to protect from heat, rain, and snow. Natural fibres may also be affected by humidity, therefore we recommend avoiding use in bathrooms.

Certifications

We source our products with the best interest for the planet, people and animals in mind. All products are PETA-approved vegan and carry originalhome trade certification. Lampshades from abaca are BSCI certificated and items from reclaimed teak are certified with V-Legal Wood.

Care instructions

Lampshades made from natural leaf fibres are simply sundried and may contain colour variation and or stains caused by natural elements. Although the material as a whole is strong, the individual leaves can be delicate. Please handle with care. When stained, clean gently with a cloth and a very mild detergent. Do not rub to avoid colour difference and damage to the product.

How to fix damages

Damaged spots on black lampshades? You can easily touch them up with a black marker or some water based black bio paint.

Custom made orders

Custom made orders are possible for larger quantities. For more information please contact customer@originalhome.nl.



ORIGINS

originalhome

Our earth has suffered enough from what we have taken. It is time to give back and do it right. We put planet and people before profit by minimising our footprint on the planet and maximising our impact on people.

Our origins:

- ☐ Earth Friendly Materials
- ☐ Environmentally Friendly Production
- ☐ People Friendly Trade
- ☐ Giving Back 20% of our profits

Currently 25% of the collection is made from sustainable plant fibres and 75% is made from waste materials.



Quickly Renewable

PLANT FIBRES

The lampshades are made from 100% natural and quickly renewable plant materials.

Quickly renewable plant fibres like water hyacinth, seagrass, unbleached jute, and abaca are sustainable, have a low impact on the environment and do not harm the eco system.

The materials are harvested by hand from local community plantations and are not grown on an industrial scale.

- ☐ Limited or no pesticides and fertilizers are used to grow these plants
- ☐ These plants grow very quickly (jute matures in just 4.5 months)
- ☐ High capacity of CO2 absorption and/or other toxins
- ☐ Non industrialised materials sourcing process



Read more about our origins:

INFORMATION

WANT TO SELL OUR PRODUCTS?

TRADE SHOWS AND SALES AGENTS

Please check originalhome.nl for trade shows and sales agents.

24/7 ONLINE ORDERING @ ORIGINALHOME.NL

To obtain your login and password, please contact **hello@originalhome.nl** or apply for a dealership at **originalhome.nl/become-a-dealer/**

Sales and delivery terms can be read at **originalhome.nl/terms-conditions/**

Please contact **hello@originalhome.nl** for prices. Prices on originalhome.nl or on our price list are net prices ex VAT. We reserve the right to price changes without notice.

QUESTIONS?

Originalhome
Burgemeester Pabstlaan 10
2131 XE Hoofddorp
The Netherlands
hello@originalhome.nl

Text, styling, photography: originalhome
Layout and graphic design: hellopixels
We apologize for any typographical errors.