



SAIDPUR
ENTERPRISES

CATALOGUE 2024

a fair trade handicrafts organization

www.saidpurenerprises.com



Product Name : Cushion cover with one color print & also machine stitched design.

Color : White & blue

Material : Canvas cloth, foam, Markin cloth & zipper

Size : (1) 45x45 cm, (2) 25x35 cm, (3) 60x60 cm.

Code : (1) SE-0009 - CC2, (2) SE-0009 – CC4, (3) SE-0009 – CC1



Product Name : Squire tote bag with lather handele, one color print & also machine stitched design

Color : White & blue

Material : Canvas cloth, foam, markin cloth, zipper rivet, dark brown leather

Size : (1) 35x30x14 cm, H - 60x2.5 cm

(2) 25x23x13 cm, H - 50x2.5 cm

(3) 45x37x18 cm, H - 70x2.5 cm

Code : (1) SE-00070 – STM, (2) SE-00070 – STS, (3) SE-00070 – STL



Product Name : Duo basket with lid, one color print & also machine stitched design, blue leather trims

Color : White & blue

Material : Canvas cloth, foam, markin cloth, blue leather

Size : (1) 30x30 cm/dia

(2) 20x20 cm/dia

(3) 25x25 cm/dia

Code : (1) SE-00058 - DBL, (2) SE-00058 – DBS (3) SE-00058 – DBM



Product Name : (1) Pencil case, (2) Cosmetic bag, (3) Coin purse, (4) Small purse, (5) Optical case
one color print & also machine stitched

Color : White & blue

Material : Canvas cloth, foam, markin cloth, zipper rivet, dark brown leather

Size : (1) 7x21x5 cm
(2) 10x15x5 cm
(3) 11x10 cm
(4)
(5) 18x10 cm

Code : (1) SE- 000303-HCP (2) SE-00117- CC, (3) SE-00627-CP (4) SE- (5) SE-0003-C2

Handmade by women

Not Just Individuals! We are a Family..

Bonded with Love, we create exquisite handcrafts,
enriching homes and lives. Every purchase
empowers our families and
communities.



SAIDPUR
ENTERPRISES



www.saidpurenterprises.com

शुकी
SHOKIO
HANDCRAFTED WITH LOVE...





Product Name : Honey comb wash bag with kantha stitched & tassel
Color : White
Material : waffle fabric, taffeta fabric & zipper
Size : (1) 13x25x10 cm, (2) 15x27x10 cm, (3) 12x23x9 cm
Code : (1) SE-00117 – HC1, (2) SE-00117 – HC, (3) SE-00117 – HC2



Product Name : Honey comb cushion cover with kantha stitched
Color : White
Material : waffle fabric, Markin cloth & zipper
Size : (1) 60x60 cm (2) 45x45 cm (3) 30x50 cm (4) 25x35 cm
Code : (1) SE-0009 – HCC, (2) SE-0009 – HCC1, (3) SE-0009 – HCC2 (4) SE-0009 – HCC3



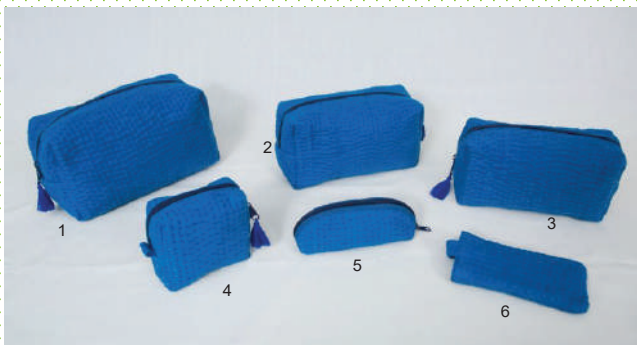
Product Name : Honey comb shoe with kantha stitched
Color : White
Material : waffle fabric, Markin cloth & rubber sole
Size : 30x11x8 cm
Code : SE – 0002-HCS



Product Name : Honey comb optical case with kantha stitched & tassel
Color : White
Material : waffle fabric, canvas cloth, markin cloth, foam & button
Size : (1) 18x10 cm, (2) 18x10 cm
Code : (1) SE - 0003 - HC (2) SE-0003 - HC1



Product Name : Drawstring bag with kantha stitched & tassel
Color : White
Material : waffle fabric, canvas cloth & markin cloth
Size : (1) 20x15 cm, (2) 23x18 cm (3) 27x22 cm
Code : (1) SE - 00105 - HCS (2) SE - 00105 - HCM (3) SE - 00105 - HCL



Product Name : Honey comb wash bag, cosmetic bag, pencil case, optical case with kantha stitched & tassel
Color : White
Material : waffle fabric, taffeta fabric & zipper
Size : (1) 15x27x10 cm, (2) 12x23x9 cm (3) 13x25x10 cm, (4) 10x15x5 cm (5) 7x21x5 cm (6) 18x10 cm
Code : (1) SE-00117 – HC, (2) SE-00117 – HC2 (3) SE-00117 – HC1



Product Name : Honey comb cushion cover with kantha stitched
Color : Blue
Material : waffle fabric, Markin cloth & zipper
Size : (1) 60x60 cm (2) 45x45 cm (3) 30x50 cm (4) 25x35 cm
Code : (1) SE-0009 - HCC, (2) SE-0009 – HCC1, (3) SE-0009 - HCC2 (4) SE-0009 – HCC3



Product Name : Honey comb Patchwork Quilt with hand stitched
Color : Blue
Material : Organic waffle fabric, Markin cloth & foam
Size : 210x210 cm
Code : SE – 0006-HCQ



Product Name : Honey comb duffle bag with kantha stitched
Color : Blue & white
Material : waffle fabric, Markin cloth & foam
Size : (1) 42x40x25 cm (2) 30x31x25 cm (3) 18x20x12 cm
Code : (1) SE-00434 - HCL, (2) SE-00434 - HCM, (3) SE-00434 - HCS



Product Name : Honey comb Bathrobe with print border
Color : Blue & white
Material : waffle fabric, markin cloth
Size : (1) 132x64x78x58.5 cm
Code : (1) SE-0001 - HCBR

www.saidpurenterprises.com

Choose Shokio Products - to Brighten Your Home...



શોકિયો
SHOKIO
HANDCRAFTED WITH LOVE...

 **SAIDPUR**
ENTERPRISES





Product Name : Quilt & Pillow case, Wildflower-SK, with 5 color print & hand stitched
Color : multi color
Material : Cotton fabric & recycle cotton padding
Size : (1) 210x265 cm, (2) 52x77 cm
Code : (1) SE – 200-SKN, (2) SE-9WPCN



Product Name : Cushion cover Wildflower with 5 color print
Color : multi color
Material : Canvas cloth
Size : (1) 30x50 cm, (2) 60x60 cm, (3) 45x45 cm
Code : (1) SE-9WPCN3 (2) SE-9WPCN1 (3) SE-9WPCN2



Product Name :Toilet bag, cosmetic bag, pencil case, Pot Wildflower with 5 color print
Color : multi color
Material : white jute lamination
Size : (1) 11x25x10cm,(2) 13x16cm,(3) 12x12x6cm,(4) 7x9x3.5 inch,(5)15.25x9.5cm ,(6)7x21x5cm
Code : (1) 117LC,(2) 58-LP,(3)76-MC,(4) 117-MC ,(5)76-CM1 ,(6)303-ZC



Product Name : Laundry basket Wildflower with 5 color print
Color : multi color
Material : white jute lamination
Size : (1) 50x40 cm, (2) 45x36 cm, (3) 40x34 cm/dia
Code : (1) SE-58-BL (2) SE-58-BM (3) SE-58-BS



Product Name : Drawstring bag w/ lid , Action Bag

Color : Red color

Material : Color jute coated & Markin cloth

Size : (1) 15x20cm, (2) 20x25 cm (3) 10x15cm , (1) 32x40 cm (2) 28x35 cm (3) 25x30cm

Code : (1) SE-00105-DM, (2) SE-00105-DL (3) SE-00105-DS (1) SE-00101-ABL, (2)00101-ABM, (3) 00101-ABS



Product Name : Cushion Cover & Wash Bag

Color : Red color

Material : Color jute coated & Markin cloth

Size : (1) 35x35cm, (2) 35x35 cm (3) 35x35cm , (1) 25x30 cm (2) 20x25 cm (3) 20x25cm

Code : (1) SE-009-CC5, (2) SE-009-CC6 (3) SE-009-CC7 (1) SE-0067-WL, (2)0067-WM, (3) 0067-WS



Product Name : Tote Bag w/ print & stripe design

Color : Natural+ cream color

Material : Natural jute coated , Markin cloth, Foam Leather

Size : (1) 26x38x6cm, (2) 28x36x6cm

Code : (1) SE-00600-TB2 , (2) SE-00600-TB3



Product Name : Duo Basket w/ print & machine stitched

Color : Natural+ cream color & Foam

Material : Natural jute coated , Markin cloth, Foam Leather

Size : (1) 25x25cm, (2) 15x15 cm , (3) 20x20cm

Code : (1) SE-0058-DBL7 , (2) SE-0058-DBS8 , (3) 0058-DBM7



Product Name : Tote bag w/ Print & Kantha Stitched

Color : Natural+ cream color & Foam

Material : Natural jute , Markin cloth, Foam Leather

Size : (1) 25x30x8cm, (2) 35x40x10cm ,

Code : (1) SE-00600-TBS , (2) SE-00600-TBL



Product Name : Drawstring bag w/ print & kantha stitched
Color : Natural+ cream color
Material : Natural jute , Markin cloth,
Size : (1) 30x25cm, (2) 35x30cm , (3) 25x20cm
Code : (1) SE-00105-DJM , (2) SE-00105-DJL , (3) SE- 00105-DJS



Product Name : Hand Purse w/ print & stripe design
Color : Natural+ cream color
Material : Natural jute coated , Markin cloth,
Size : (1) 32x30x15cm, (2) 28x30x13cm ,(3) 26x28x12cm
Code : (1) SE-0067-HPL , (2) SE-0067-HPM, (3) SE-0067-HPS

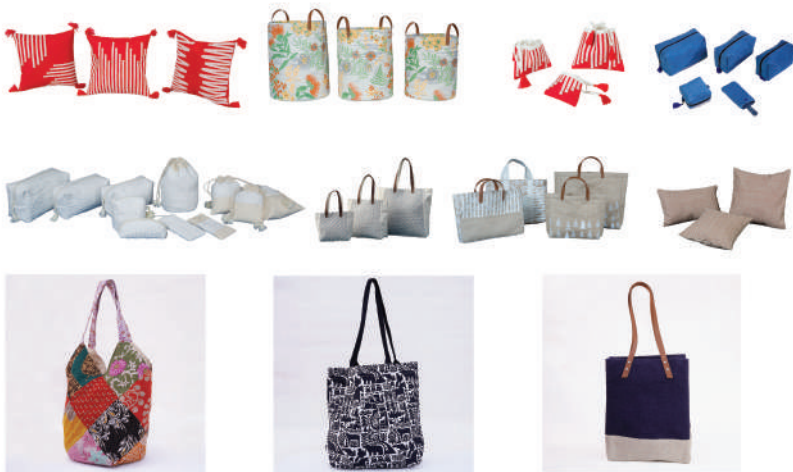


Product Name : Table Runner w/ print & kantha stitched
Color : Natural+ cream color
Material : Natural jute , Markin cloth,
Size : 210x35cm
Code : SE-0003-TRA

Handmade by women



**Choose Shokio Products - to
Brighten Your Home...**



 **SAIDPUR**
ENTERPRISES

 **SHOKIO**
HANDCRAFTED WITH LOVE...



Product Name : Cushion Cover w/ print & Embroidery
Color : Dark Brown Color
Material : Canvas cloth ,Markin cloth
Size : (1) 30x50cm ,(2) 35x35cm ,(3) 45x45cm
Code : (1) SE-0009-CC8, (2) SE-0009-CC9, (3) SE-0009-CC10



Product Name : Basket w/ print all over
Color : Dark Brown Color
Material : Canvas cloth ,Markin cloth & Foam
Size : (1) 40x30cm/dia ,(2) 30x23cm /dia, (3) 35x30cm /dia
Code : (1) SE-00058-BL, (2) SE-00058-BS, (3) SE-00058-BM



Product Name : Basket w/ all over print & leather
Color : Natural+ cream color
Material : Natural jute coated , Markin cloth, Foam Leather
Size : (1) 35x32cm, (2) 32x28 cm ,(3) 29x25cm
Code : (1) SE-0058-BL2 , (2) SE-0058-BM2 ,(3) 0058-BS2



Product Name : Tote bag w/ both side print
Color : Dark Brown Color
Material : Canvas cloth
Size : 30x40cm H-40x3cm
Code : SE-00600-TB



Product Name : Duo Basket w/print all over cotton handle
Color : Dark Brown Color
Material : Canvas cloth , Markin cloth & foam
Size : (1) 12x20cm/dia; (2) 10x15cm/dia; (15x25cm/dia
Code : (1) SE-00058-DBM4, (2) SE-00058-DBS6, (3) SE-00058-DBL2



Product Name : Fruit Basket w/ all over print
Color : Natural+ cream color
Material : Natural jute coated , Markin cloth, Foam
Size : (1) 12x25cm, (2) 10x20cm, (3) 14x30cm
Code : (1) SE-00058- FBM2, (2) SE-00058-FBS2, (3) 00058-FBL2



Product Name : Cushion Cover assorted color & design

Color : Multi color

Material : Drill cloth & Recycled Sari

Size : (1-8) 23x23 cm,

Code : (1) SE-0009CCR1 , (2) SE-0009-CCR2, (3) SE-0009-CCR3, (4) SE-0009-CCR4
(5) SE-0009-CCR5 (6) SE-0009-CCR6 , (7) SE-0009-CCR7 , (8) SE-0009-CCR8



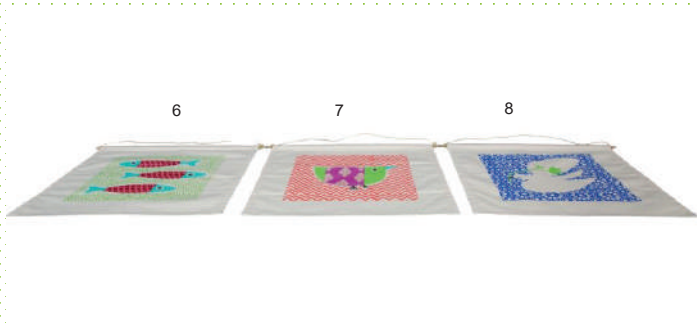
Product Name : Coin Purse assorted color & design

Color : Multi color

Material : Canvas cloth , Recycled Sari & zipper

Size : (1-8) 10x10 cm

Code : (1) SE-627-2R1, (2) SE-627-2R2, (3) SE-627-2R3; (4) SE- 627-2R4 , (5) SE-627-2R5
(6) SE-627-2R6 , (7) SE-627-2R7 , (8) SE-627-2R8



Product Name : Wall Hanging assorted color & design.

Color : Multi color

Material : Drill cloth & Recycled Sari

Size : (1-8) 35x35cm;

Code : (1) SE-107-R1 ,(2) SE-107-R2, (3) SE-107-R3,(4) SE-107-R4

(5) SE-107-R5 (6) SE-107-R6 ; (7) SE-107-R7 ,(8) SE-107-R8



The Story of Saidpur Enterprises

Born as a result of the independence of Bangladesh in 1971, Saidpur Enterprises was established by MCC (Mennonite Central Committee – an NGO) for the socially deprived non-Bengali migrant community who had previously moved from Bihar, India for work in the railway sector of the then East Pakistan. This community became further displaced after the 1971 War of Liberation and lacked the opportunity of financial independence leaving them homeless and poverty stricken. MCC stepped in and they were offered livelihood, refuge and opportunity to live a respectable life. Action Bag, their first venture, stitched together not just jute bags, but a lifeline for destitute women, primarily widows and heads of households.

Over 2000 artisans found fair wages, skills training, and dignity to start a new lease in life. Eastern Screen Printers followed, empowering more women with skills via their vibrant print making. Today, Saidpur Enterprises guides both; a beacon of hope in a thriving community.

Fair trade principles ensure ethical practices, building a sustainable future for all. May your home brighten with the hope, beauty, and empowerment born in Saidpur, Bangladesh.

