



# **Welford**

## **Industrial Limited**

*We afford better life.*

Head Office

RM.2002 Building Two, Ruling The  
World, No.1819 Hongning Road,  
Qianjiang century city, Hangzhou, China  
311215

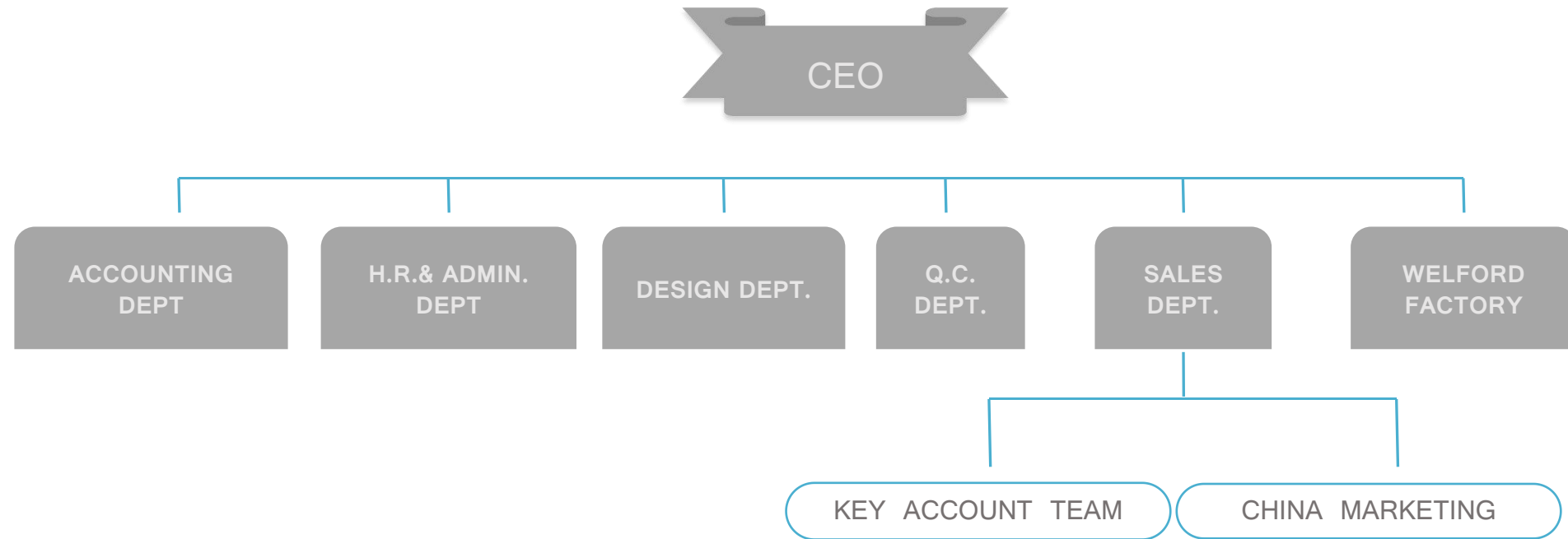
Contact

86-571 8775 3289  
tracy@chinawelford.c



- A manufacturer and exporter with more than 18 years' experience concentrating on household products.
- Working with top clients all over the world, such as Wal-Mart/ASDA, Sainsbury's, Tchibo, QVC, Edeka, Lidl, Primark, Boohoo, B&M, Lifetime brands, Brandshaw, Zak Designs etc.
- Strong OEM developing ability, 7 -member design team creating more than 1000 new designs each year.
- Owned office in Hangzhou city- 1500m<sup>2</sup>, showroom - 400m<sup>2</sup>

# Company Structure



# Overseas units



Office in UK  
Suntrxe Household Ltd.  
41 Devonshire Street, Ground  
Floor Office 1, London, United  
Kingdom, W1G 7AJ

Partner in Germany  
Global Innovations Germany  
GmbH & Co. KG  
Im Paesch 11a  
54340 Longuich

Owned office in Hangzhou  
city China, office staffs  
50.

Owned factory in Zhejiang,  
China, Factory workers  
more than 70.

# Our Partners



# Welford Factory 1



BSCI, ISO9001 Approved, also pass Walmart factory audit and have FAMA certificate for Disney. FSC and ISCC approved.



Dustless workshop - Enable to produce high quality food grade items.



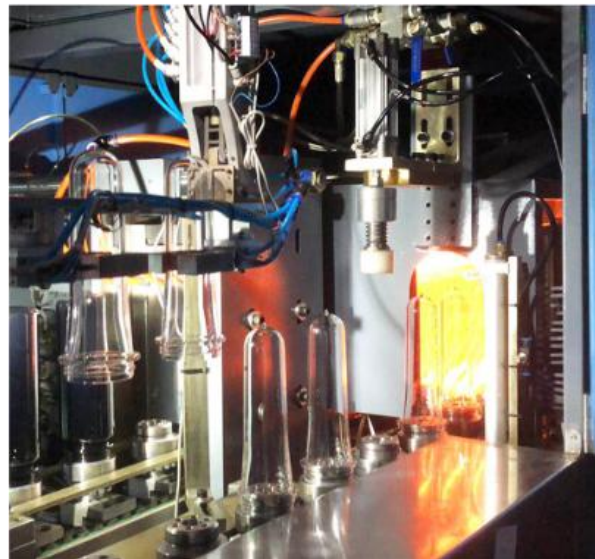
Well-equipped factory to ensure large production capacity ( 8,000-10,000pcs per day for normal plastic items) and offer competitive prices.



Strict quality control system and traceability system, ensure high quality goods for our customers.




# Welford Factory 2






# Welford Factory Certificates

## BSCI

<b>Provider:</b> <b>PwCang Weifang Industrial Limited</b> 3000-00000 and below: <b>00000</b> Fax: 0531-87777777 Audit Type: <b>Full scope audit</b>		 <b>BSCI</b> Business Social Compliance Initiative	
<b>Audited:</b>	<b>PwCang Weifang Industrial Limited</b>		
<b>Audit Code/Year:</b>	<b>250902017</b>		
<b>Audit Date To:</b>	<b>250902017</b>		
<b>Entry Date of the Audit:</b>	<b>Please refer to the producer profile in the BSCI platform</b>		
<b>Auditing Company:</b>	<b>TUV Rheinland</b>		
<b>Auditor's Name(s):</b>	<b>HAOYI GONGJING</b>		
<b>Auditing Branch (if applicable):</b>	<b>TUV Rheinland China</b>		



**BSCI Audit Summary Report**

This is an extract of the on-line Audit Report. The complete report is available in the BSCI Platform.  
 Access: [www.bsciconformity.com](#). For detailed audit entry:

Single-click material for the product or the production line, click on the selected material, or, if necessary, click on the entry, then select the relevant information, including the reference to the BSCI audit. The on-line audit results should also be in the system.

This is an extract of the BSCI audit report, which is available in the BSCI Platform. It's design: "Last assessment (100%)". The English version is being leading the.

# ISO9001



**Certificate of  
Management System Certification**

This is to certify the quality management system of

**PUIJANG WELFORD INDUSTRIAL LIMITED**  
Unified Social Credit Code: 91120206917529180

ADDRESS: NO. 60-60A, JIANGSU ROAD, DONGCHENG TOWN, FUSHAO COUNTY, ZHEJIANG  
CITY: CHAOZHOU PROVINCE

**Is in conformity with**

GB/T 19001-2016 / ISO 9001:2015

This certificate covers the following area

**PRODUCTION OF DAIRY UML PLASTIC PRODUCTS (LIKE COSMETIC  
STORAGE BOX, WATER BOTTLES AND ETC.) FOR EXPORTATION  
(ONLY)**

Initial Certification Date: JAN. 05, 2011      Issue Date From: JAN. 08, 2021

Validity Period: From JAN. 08, 2021 to JAN. 07, 2024

Certificate No.: DAS2103003RDM      Issued representative: *Rany Hong*

  中国合格评定委员会  
MANAGEMENT SYSTEM  
CERTIFICATION CENTER



Small print text at the bottom of the page:



**Beijing Daluhangxing Quality Certification Center Co., Ltd.**

## FSC

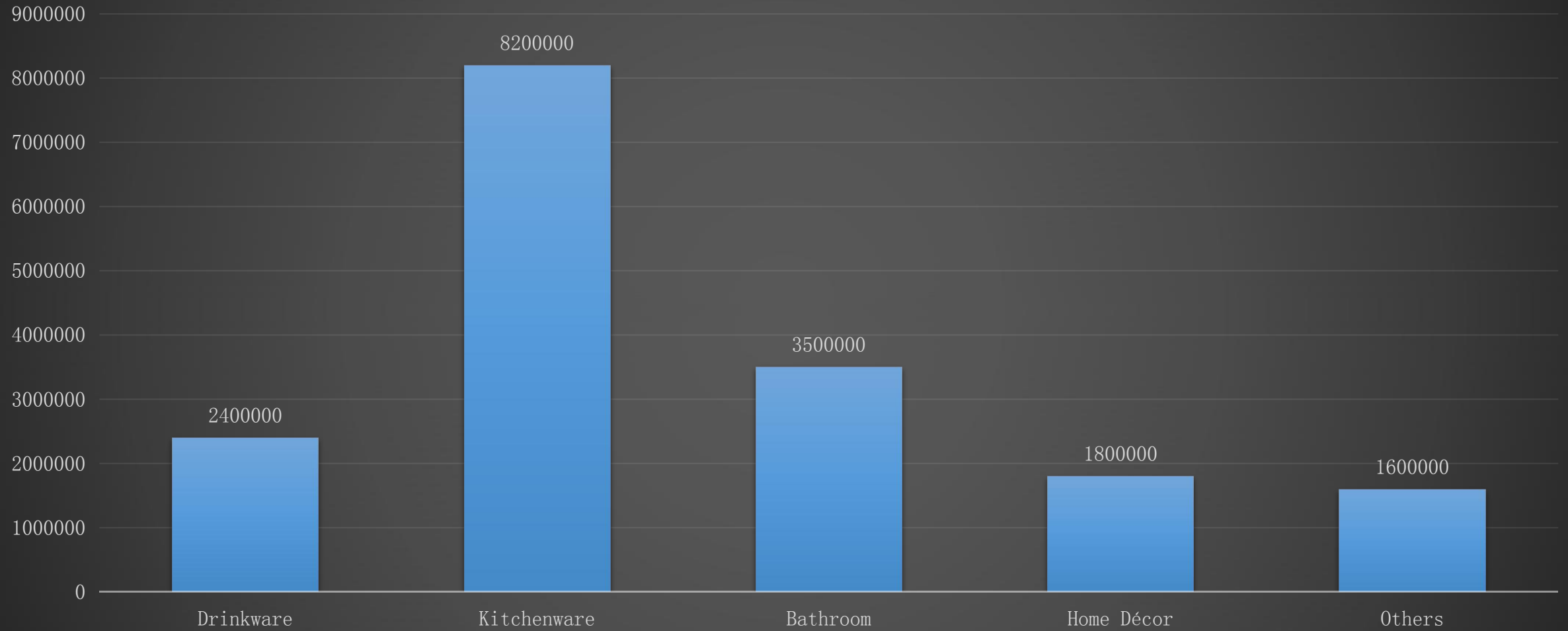
 <b>FSC</b> <small>www.fsc.org</small> <small>For more information</small>	 <b>Artyur Vladimirov,</b> <b>Director General of Certification</b> <b>Association "Moscow Register"</b>	 <b>FSC</b> <small>www.fsc.org</small> <small>For more information</small>
		 <b>FSC</b> <small>www.fsc.org</small> <small>For more information</small>
<h1 style="text-align: center;">CERTIFICATE</h1>		
<p style="text-align: center;">№: RR-COC-006124</p>		
<p style="text-align: center;"><b>Pujiang Welford Industrial Co., Ltd.</b>          浦江森丰工贸有限公司</p>		
<p>No. 20 Xiyang Road, Huangzhuai Town, Pujiang County, Jinhua, Zhejiang, China</p>		
<p>complies with FSC requirements of chain of custody</p>		
<p>in respect of purchasing of wood &amp; bamboo materials, production and sales</p>		
<p>of wood &amp; bamboo products (FSC 100%, FSC Mix), transport system</p>		
<p style="text-align: center;">The evaluation was based on standard:</p>		
<p style="text-align: center;">FSC-STD-40-004 v. 3-0</p>		
<p style="text-align: center;">FSC Standard for Chain of Custody Certification</p>		
<hr/> <p style="text-align: center;">This certificate is the property of RR and shall be returned upon the request.</p>		
<p>This certificate does not constitute evidence that a particular product originates by the certificate holder in FSC certified or FSC Controlled Wood Production. Instead, approval or denial by the certificate holder can only be considered in context by the scope of this certificate when the customer's claim is clearly stated on invoices and shipping documents.</p>		
<p>Issue date: <u>12 September 2021</u>          expiry date: <u>30 September 2026</u>          Issue number: <u>1</u>          Date of initial certification: <u>26 September 2021</u>          FSC License Code: <u>FSC-C170493</u></p>		
<p>The validity of the certificate shall be verified at <a href="http://info.fsc.org">http://info.fsc.org</a></p>		
<p>This certificate becomes invalid if conditions of certification are not fulfilled (<a href="http://www.fsc.org/certification/faq/faq.asp">http://www.fsc.org/certification/faq/faq.asp</a>, Certification Association "Russian Register", 101 Bldg, Krasnaya Arka, 191121, Saint-Petersburg, Russia)</p>		

## FAMA

<p align="center"><b>FACILITY AND MERCHANDISE AUTHORIZATION</b></p>			
<p>LICENSEE/SHOW NAME: Private Screen Limited</p> <p>CONTACT NAME: TITLE, E-MAIL ADDRESS:          Andrew Chan          Chan@PrivateScreen.com          andrew@private.com</p>	<p>OFFICE ADDRESS: 41 West Street          (Facing No. 112          Leong Keng Wah)</p> <p>TELEPHONE NUMBER: 44 118 926 300 ext.23761</p>		
<p><b>1. Facility Name (Place where Disney-branded product will be produced):</b>          Pegasus Children Industrial Limited          (TAO-158867)</p> <p><b>2. Facility Address:</b>          16/30 Kwai Ping Road, Hung Hom          Kowloon          China</p> <p><b>3. Telephone Number:</b> 86 753706983711</p>		<p><b>10. Facility Contact Telephone Number:</b> 86 753706983711</p> <p><b>11. Contact Name, Title and Email:</b>          Yvett Y. Yip, Sales, yvett.yip@newsworld.com</p> <p><b>12. List all other names by which the Facility is known:</b>          Pegasus Film Factory Industrial Limited</p>	
<p>Our agreement herby is a contractual agreement of Disney Worldwide Services, Inc. or its affiliate (each referred to as "Disney") and the Member State of the Republic of China, Inc. (the "Member State") to authorize the Member State to use the trademarks, service marks, and other intellectual property of The Walt Disney Company and its affiliates ("Disney") (which may include, without limitation, Mickey Mouse, Donald Duck, the Disney Princesses, the Disney Pixar characters, etc.) in connection with the operation of the Member State's business. The Member State shall be responsible for obtaining all necessary permits and licenses from the appropriate government authorities to operate the Member State's business. The Member State shall be responsible for obtaining all necessary permits and licenses from the appropriate government authorities to operate the Member State's business.</p> <p>This Facility and Merchandise Authorization expires on the Expiration Date or the Expiration Date, whichever is earlier.</p> <p>Notwithstanding to the contrary, Disney hereby reserves all of the rights and remedies arising from its ownership of the Facility and Merchandise Authorization. Without limiting the foregoing, any unauthorized use of the Facility and Merchandise Authorization by the Member State, including without limitation, any use of the Facility and Merchandise Authorization which has been authorized by Disney prior to the Expiration Date, shall be the sole basis of the applicable civil action between the Member State and Disney.</p>			
<p><b>Authorized Signatory</b></p> <p><b>Anna Kasperska</b> Digitally signed by Anna Kasperska          DN: cn=Anna Kasperska, o=Private Screen Limited, ou=Private Screen Limited, email=anna.kasperska@private.com, c=PL</p> <p>Anna Kasperska          Director, Regional Management EMEA</p> <p>Issuance Date: 2019/04/09          Expiration Date: 2020/04/08</p>			



# Welford Product lines





**Strong OEM development capability**





**1200**  
PRODUCTS  
10 MANUFACTURING UNITS  
& 2 OFFICES & DISTRIBUTION UNITS OVERSEAS



## Strong OEM development capability – Disney icon bottle



1

Original Disney character - Slinky Dog

Customer asked us to create a new design of drinking bottle related to slinky dog



2

Initial design from Welford Team

Welford designer create 3D construction drawing and try to realize the character in the bottle with reasonable costing.



3

Final real product

Open new molds and combine hand drawing & printing to realize the product.



## Strong OEM development capability – Tchibo lunchbox



1

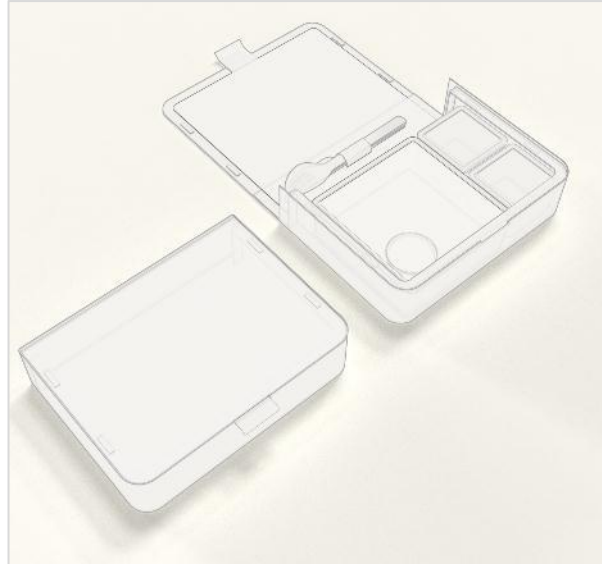
### Eco requirements from the customer

To create a reusable lunch box and replace the disposable tableware which cause great burden to ocean/earth.

2

### 3D drawing

Design to combine 3 materials in this lunch box set: bamboo, plastic and stainless steel. High end product with reasonable costing.



3

### Final real product

Meet technical problem during the sampling and production period, but finally solved and delivered duly.

## Strong OEM development capability – Primark key line item – Best seller

Total Sales: 5, 000, 000pcs from Year 2019– 2021



### *Selling point*

- *Dust proof lid – clean and comfortable drinking experience.*
- *Easy grip body shape with anti-slip silicone sleeve.*
- *Suitable volume for Gym or outing use.*
- *Various color assortments, love by both men and women.*
- *Low cost and competitive pricing.*

Beauty Accessories









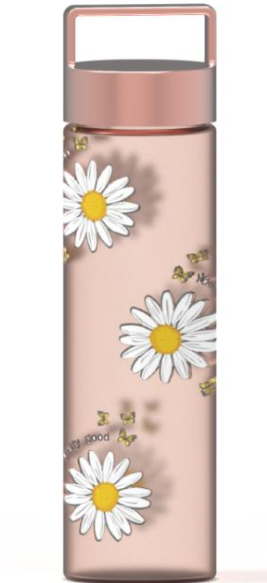
Kitchenware – Drinkware



Kitchenware – Drinkware



Kitchenware – Drinkware



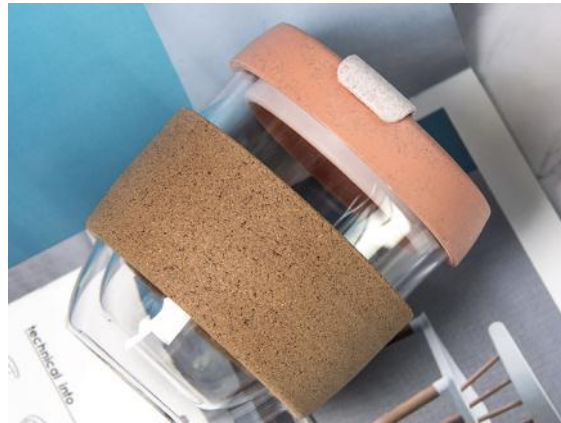


Drinkware – Stainless steel line





## Drinkware – ECO sustainable line



## Kitchenware – Metal line





Kitchenware – Bakeware



Kitchenware – Bakeware





Kitchenware – Bakeware



Kitchenware – Preparation





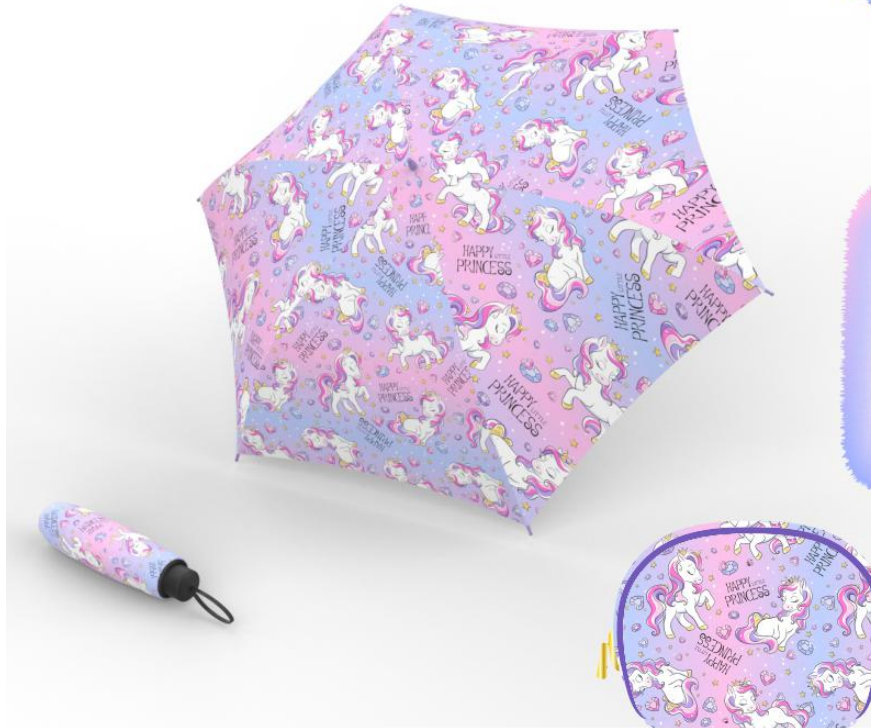
Kitchenware – Storage





# Kitchenware – Tableware









# Thanks

## Head Office

RM.2002 Building Two,  
Ruling The World, No.1819  
Hongning Road,  
Qianjiang century city,  
Hangzhou, China 311215

## Contact

86-571 8775 3289  
[tracy@chinawelford.c  
n](mailto:tracy@chinawelford.cn)