



wadou

Established since 2004

- 
- Susan Zhang
General Manager
susan@wadoupicture.com
 - Lily Gong
Sales VP
lily@wadoupicture.com

CONTENTS

1

ABOUT US

2

CORE COMPETENCE

3

MANUFACTURING & SHOW ROOM

4

MAIN PRODUCTS

1

ABOUT US



Company Introduction

- Founded in 2004 in Yiwu, Zhejiang Province.
- 1100 employees (300 office-800 workers).
- Wadou has 2 factories covering a total floor area of over 115000m².
- Wadou has offices in USA, Europe, Middle East and South America.
- Wadou has the biggest R&D department in this industry : More than 100 people with 80 in house designers and 20 oversea designers.
- QAE(Quality Assurance Environmental) : Specific team dedicated to the enviromental concerned.

Capacity Scale



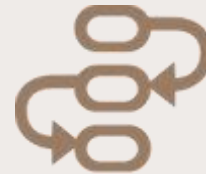
Construction Area/ m²
115000m²



Factory Employees
800
Office Employees
300



Containers/Year
3,600



Assembly Lines
26

New Factory Building



Area/ m² 82000m² 7 Floors



Start using date Jan, 2021



Workers 530

Factories and Business office Distribution

Our customers throughout the world, such as the United States, Europe, South America, Australia, Canada etc.



2

CORE
COMPETENCE



R&D Team at Wadou

20
Oversea
Designers

Collect oversea trend and create specific designs for customers based in the market.

9
Senior
Designers

Mainly focus on developing new formats and techniques

72
Graphic
Designers

Create graphic designs for all kinds of categories according to customer's requests and trend.

10
Hand
painting
Artists

Create original hand paintings monthly.

Copyright Management

- Creating designs based on different countries & regions
- Internal inspection before designs presenting to customers with exclusivity needs to avoid conflict
- Exclusive design one country one customer

Design creativity



Design department

Monthly Capacity of New Designs: 1000 pcs

Environmental & Social Commitment

Environmental Commitment

● PRODUCTS

- ✓ Sustainability
- FSC (Wood)
- BCI (Cotton)
- GRS (Recycling)
- EUTR (Wood Regulation)
- ✓ Chemical Control
- REACH SVHC
- ✓ Environmental
- ISO14001
- Higg FEM



● QUALITY

- SQP (Supplier control)
- ISO9001
- FCCA
- QAFA
- QIMA



FCCA

● SOCIAL POLICY

- SMETA
- BSCI
- WCA (Workplace Assessment)
- ISO45001



● PACKAGING

- Recycled cartons
- Recycled paper corners & POF bag
- Recycled paper
- ISTA (Drop test)



Environmental & Social Commitment

Social Commitment

- **Social Responsibility:** We actively fulfill legal and ethical obligations, adhere to business conduct standards, promote ethical business practices, and ensure integrity and fair competition.
- **Employee Welfare:** We are committed to the professional development and welfare of our employees. We provide a safe and healthy work environment, encourage diversity and work-life balance for our employees.






3

MANUFACTU RING & SHOW ROOM



Factory Capacity

It's 30 minutes-drive between two factories.

Fotang Base	 Area/ m ²	 Workers	 Main Products
	82000 m ²	Over 530	Hand Paintings Printing Canvases
Yiwu Base	32000m ²	Over 500	Framed Art Wood Art
			

Factory Capacity



Printing Lines

Production Lines

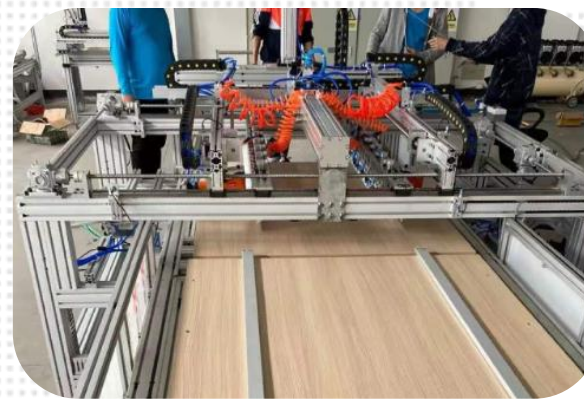
Assembly Lines

Storage



Automatic Machines

- Shrink Wrap Machine: 10
- Shape Cutting Machine: 2
- Stretching Bar Machine: 2
- Canvas Cutting Machine: 9
- Stretching Machine: 29



Machines

- Rolling Printing Machines: **70**
- Flat printing Machine: **10**
- Laser Cutting Machine: **5**
- Corner Joining Machines: **27**



Quality Control



Wadou has implemented the following quality assurance systems

- ✓ 1.QC for each step of samples and orders
 - ✓ 2.Customer approved samples for mass production
 - ✓ 3.Pre-mass production meeting
-
- ✓ First article system
 - ✓ Pre/In/Post-production QC check system
-
- ✓ ISO 9001,14001,45001 certificates

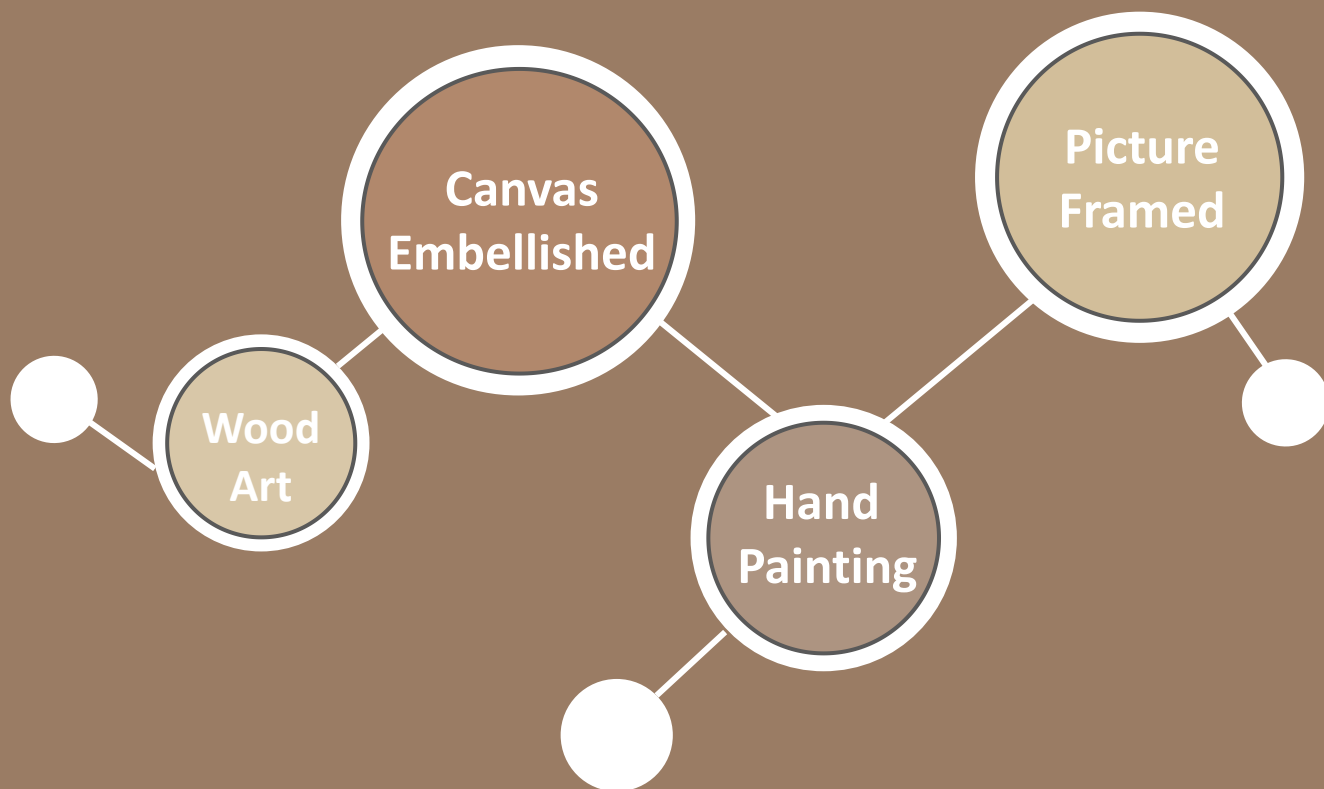


4

MAIN
PRODUCTS



Global Wall Art Manufacturer

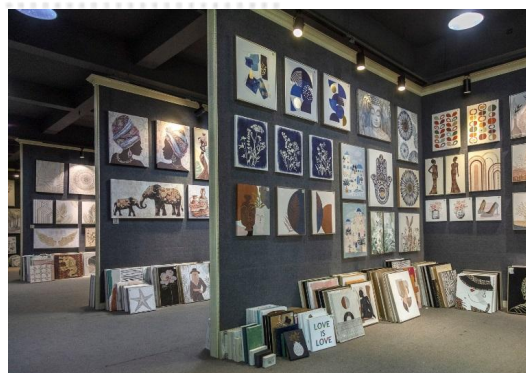


Since 2004, Wadou has been producing wall art specializing in a variety of techniques such as: hand painting, print canvas with embellishments, Pictures Frames and Wood Art items.

Our team of R&D department are at the forefront of continuing to develop creative, innovative and leading edge techniques to offer our customers.

Our showroom

A 1000m² showroom with over 5000 items.



- 2 Floors of showroom for :
 - Oil painting
 - Embellished canvas
 - Framed art
 - Wood art

Thank you!