



KITSUTAKA

畳

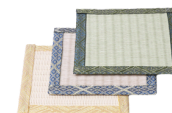
たたみ
タタミ

Tatami

Tatami is a type of flooring that developed in Japan. The concept of tatami already existed in Japan about 1,300 years ago. Originally, during the Heian period (794–1185AD), it was used as a mat placed on the wooden floors of noble households, symbolizing status and wealth.

Tatami became more common during the mid-Edo period(1681-1780AD), and it spread among commoners in the same form as we use it today, with tatami mats covering entire rooms.

Additionally, with the growing popularity of "Japandi style" (a fusion of Scandinavian and Japanese design) in Western countries, more people are considering adding Japanese elements to their home interiors.



Kitsutaka Co., Ltd.

Technoport Taiju Seimei Bldg.
11th Floor, 2-16-2 Minamikamata,
Ota-ku, Tokyo, Japan 144-0035



kaigai@kitsutaka.co.jp



English Chinese

Kitsutaka

has been producing a Japanese-style rooms for 60 years.

History



The history of Kitsutaka started from a small tatami shop in 1955. Since then, we have grown into a company that has been at the forefront of manufacturing a Japanese-style rooms in Japan for the last 60 years.

Over the last 60 years, Kitsutaka has continued to make Japanese-style rooms that meet the needs of people living in the present era while still treasuring this tradition and culture. Kitsutaka's determination to continue providing consistent and well-made Japanese-style rooms to suit the changes of the times has helped it produce rooms that are loved by many people.

1955

Founding of Kitsutaka Tatami Shop in Tokyo

1984

Establishment of Kitsutaka Co., Ltd.

1996

Commencement of Fusuma prefecture repapering operations

1998

Establishment of group company Technomist under the Materials Division

2003

Number of branches reaches 10 in Kanto area

2006

Opening of new branch in Osaka, Kansai area

2007

Opening of Iwaki Recycling Center in Fukushima

2008

Number of branches reaches 20

2014

Establishment of Kitsutaka Farm for Igusa rush

2016

Commencement of bathroom painting business

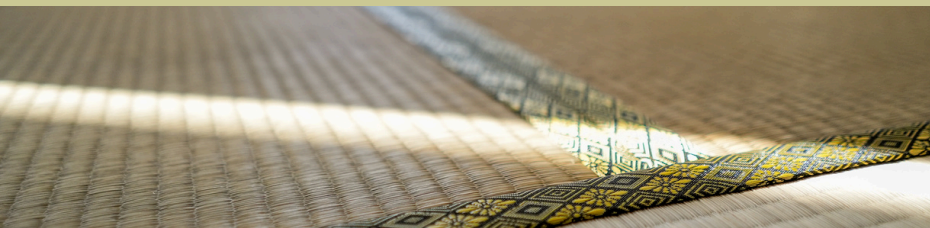
2024

Grand Opening of Tokyo Bayside Showroom



TATAMI made of Igusa rush

The Comfort and Tradition of Japanese Flooring



Comfortable Indoor Environment

Tatami mats, made from IGUSA rush, absorb and release humidity to keep the room cool in summer and warm in winter. They also feel soft and natural underfoot.



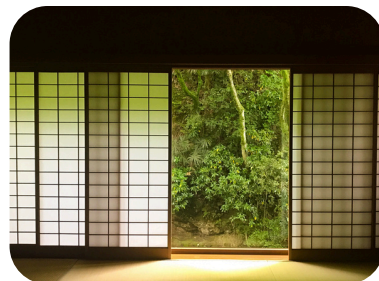
Cushioning Effect

Tatami mats are soft and cushion falls, making them safe for the elderly and children. Their slip-resistant surface adds extra safety.



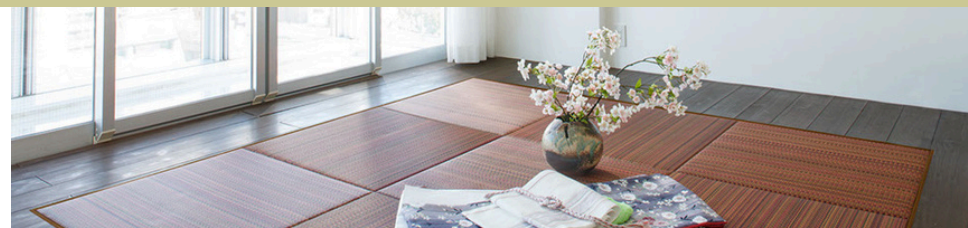
Japanese Tradition

Tatami mats represent Japanese tradition, especially in washitsu (Japanese-style rooms). Their texture and scent create a peaceful and calming atmosphere.



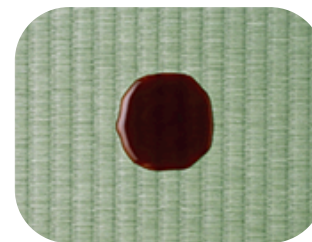
TATAMI made of polypropylene

Easy to install and remove, easy to keep clean



Resists staining from water and other liquids

Juice and coffee stains are easy to clean off—simply wipe down with water or a mild detergent.



New playground for babies and kids



You can clean it with a damp cloth or use common household cleaners and disinfectants. Also you can change baby's diaper.

Create your own pattern from a range of attractive colors





Floor Tatami Mat

This mat can easily create a Japanese-style space by simply placing it on flooring or marble. It offers cushioning and allows you to relax with the calming scent of Igusa. It's recommended for use in your living room or bedrooms.

- Material Polypropylene, Insulation board
- Size 67cm(W) × 67cm(L) × 1.5cm(T)
82cm(W) × 82cm(L) × 1.5cm(T)
- Color variation 35 colors

Please scan the QR code to check



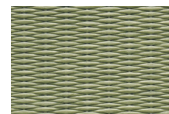
Color simulation



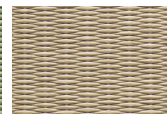
Japanese space Oasis

This is a product called "Koagari" (a small room-style Japanese space elevated from the floor). The raised platform allows for sitting or lying down, making it perfect for family bonding time. The tatami used in this product is made of resin, making it resistant to dirt and easy to sanitize.

- Material Ash wood, Polypropylene, Insulation board
- Size 171.3cm(W) × 170.7cm(L)
16cm(T)
- Color variation



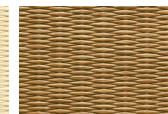
green



mocha beige



ivory



brown



gray





Medium



Brown

Kumiko Lamp

This is a freestanding lamp that uses traditional Japanese kumiko shoji. The soft light warmly illuminates your room. It's recommended for use beside the bed, at the entrance, and near the dining table.

- Material Natural: Hinoki cypress, Washi paper
Medium: Cherry, Hinoki cypress, Washi paper
Brown: Walnut, Hinoki cypress, Washi paper
- Size 23cm cube



Natural



Medium



Tatami Item

Tatami Coaster

These coasters, made from tatami surfaces, allow you to easily incorporate Japanese culture into your daily life. Made of resin, they are easy to wipe clean, even if water droplets accumulate on them.

- Material Polypropylene
- Size 9cm(W) × 9cm(L)



Tatami Base

Tatami mats has been turned into a display stand. You can place anime figures, flowers, or small accessories on it.

- Material Polypropylene, Insulation board
- Size 15cm(W) × 20cm(L) × 2cm(T)
15cm(W) × 15cm(L) × 2cm(T)

