



# WORLDWIDE PRESSURE COOKER CATALOG 2023

## HAWKINS CLASSIC



**15**  
MODELS

**6**  
MODELS

## HAWKINS INSTAA



**4**  
MODELS

**6**  
MODELS

## HAWKINS TRI-PLY STAINLESS STEEL



**2**  
MODEL

## HAWKINS CERAMIC NONSTICK



**4**  
MODELS

## HAWKINS CONTURA

## HAWKINS CONTURA BLACK



**7**  
MODELS

**7**  
MODELS

## CERAMIC-COATED HAWKINS CONTURA



**6**  
MODELS

## HAWKINS CONTURA BLACK XT



**5**  
MODELS

## HAWKINS STAINLESS STEEL



**9**  
MODELS

## STAINLESS STEEL HAWKINS CONTURA



**5**  
MODELS

## FUTURA STAINLESS STEEL



**2**  
MODELS

## FUTURA HARD ANODISED



**13**  
MODELS

## HAWKINS BIGBOY



**3**  
MODELS

## ACCESSORIES



**New**









## THE MAKING OF HAWKINS PRESSURE COOKERS

Hawkins Cookers Limited has been in business since 1959. Today, it has two offices, three factories and about 600 persons working. It is the leader in the pressure cooker market in India and has exported its products since 1974 to various countries in each of the six continents of the world.

Worldwide, Hawkins has sold over 110 million units of pressure cookers and cookware by producing products of good design, good quality and considerable consumer benefit. Hawkins pressure cookers are listed by Underwriters Laboratories, USA, an independent worldwide institution testing products for public safety. CE certification also available.

Each pressure cooker made by Hawkins features an inside-fitting lid. This design is inherently safer than conventional pressure cookers. To open any Hawkins cooker, you have to first lower the lid slightly into the body of the cooker; and that cannot be done until the steam pressure inside the cooker falls to a safe level. Thus Hawkins pressure cookers are pressure-locked for safety - like a jetliner door!

The Hawkins Company is well known for not compromising on quality and for continual product innovation. The most thorough research and development, the most careful selection of materials, the best manufacturing practices and the strictest quality control - all go into making pressure cookers which are trusted by the millions of families using them.

Each cooker is tested to be leak-proof. Along with a superior pressure regulating system, this ensures that Hawkins cooks quickest. Each pressure cooker comes individually packed in an attractive full-colour carton. Cookbooks/Instruction Manuals come free with each pressure cooker.

Additionally, the individual cartons are packed in master cartons/case packs from 2 to 12 units (depending upon the size of the product). This makes your receiving of shipments more convenient and secure.

All Hawkins pressure cookers are guaranteed for five years.

## CONTENTS

Hawkins Classic Pressure Cooker.....	3
Hawkins Induction Compatible Classic Pressure Cooker.....	5
Hawkins Instaa Pressure Cooker .....	7
Hawkins Hevibase Pressure Cooker .....	9
Hawkins Ceramic Nonstick Pressure Cooker.....	11
Hawkins Contura Pressure Cooker.....	13
Hawkins Contura Black Pressure Cooker.....	15
Ceramic-Coated Hawkins Contura Pressure Cooker.....	17
Hawkins Contura Black XT Pressure Cooker .....	19
Hawkins Tri-Ply Stainless Steel Pressure Cooker.....	21
Stainless Steel Hawkins Contura Pressure Cooker.....	23
Hawkins Stainless Steel Pressure Cooker.....	25
Futura Pressure Cooker.....	27
Futura Stainless Steel Pressure Cooker.....	29
Hawkins Bigboy Pressure Cooker.....	31
Hawkins Classic With Separators .....	33
Hawkins Two-dish Set and Three-dish Set .....	34
Hawkins Idli Stand, Miniature Cooker and Grid .....	35
Hawkins Repair Kit .....	36
Hawkins Genuine Parts .....	37



# Hawkins<sup>®</sup>

## CLASSIC



**5 LITRE WIDE**  
**CODE: CL50**



### HAWKINS CLASSIC PRESSURE COOKER

The Classic is Hawkins' largest-selling, most popular range of pressure cookers – perhaps because of its attractive combination of features, benefits and price. Each Hawkins Classic features an inside-fitting lid. This design is inherently safer than conventional cookers. Thus Hawkins Classic pressure cookers are pressure-locked for safety – like a jetliner door!

This range was the first to be introduced by Hawkins and has been kept fresh and current by numerous innovations and improvements over the years. The latest improvement is a superior pressure regulating system that controls pressure to a narrower, more efficient range, reduces sprouting of frothy foods (such as *dal*) and is easier to insert and remove.

The safety valve is located under the lid handle bar so that when it operates the steam is safely deflected downwards. The gasket has minimum exposure to steam inside the cooker, does not rub every time the product is opened and closed – so lasts longer.

Stay-cool handles. Fixed sturdy pivot does not put pressure on the plastic handles as it is a part of the metal handle itself. Thus handles last longer. Recommended for use on gas stoves.



CODE  
CL15



1.5 LITRE

IDEAL FOR  
1 OR 2 PERSONS

CODE  
CL20



2 LITRE

IDEAL FOR  
2 OR 3 PERSONS

CODE  
CL3W



3 LITRE WIDE

IDEAL FOR  
3 OR 4 PERSONS

CODE  
CL3T



3 LITRE TALL

IDEAL FOR  
3 OR 4 PERSONS

CODE  
CL35



3.5 LITRE

IDEAL FOR  
4 TO 5 PERSONS

CODE  
CL40



4 LITRE

IDEAL FOR  
4 TO 6 PERSONS

CODE  
CL50



5 LITRE

IDEAL FOR  
5 TO 7 PERSONS

CODE  
CL65



6.5 LITRE

IDEAL FOR  
7 TO 9 PERSONS

CODE  
CL8T



8 LITRE  
TALL

IDEAL FOR  
8 TO 11 PERSONS

CODE  
CL8W



8 LITRE  
WIDE BODY

IDEAL FOR  
8 TO 11 PERSONS

CODE  
CL10



10 LITRE

IDEAL FOR  
10 TO 14  
PERSONS

CODE  
CL12



12 LITRE

IDEAL FOR  
12 TO 16  
PERSONS

PRODUCT CODE	CAPACITY (LITRE)	BASE FLAT DIAMETER (mm)	BASE THICKNESS (mm)	EAN CODE	CASE PACK
CL15	1.5	130	3.25	8901165090849	12
CL20	2	134	3.25	8901165000848	12
CL3T	3 (TALL)	134	3.25	8901165001845	9
CL3W	3 (WIDE)	152	3.25	8901165092843	9
CL35	3.5	164	3.25	8901165091846	6
CL40	4	164	3.25	8901165003849	6
CL50	5	164	3.25	8901165004846	6
CL65	6.5	164	3.25	8901165005843	4
CL8T	8 (TALL)	164	3.25	8901165006840	4
CL8W	8 (WIDE BODY)	208	3.25	8901165007847	4
CL10	10	208	4.06	8901165008844	4
CL12	12	208	4.06	8901165009841	2



# Hawkins<sup>®</sup>

## CLASSIC



**WORKS ON GAS +  
INDUCTION**  
+ ELECTRIC + CERAMIC + HALOGEN



**4 LITRE**  
**CODE: ICL40**

The largest selling range of Hawkins Pressure Cookers, the Hawkins Classic, is now offered in a variety of models that are suitable for both gas and induction cooktops.



Classic 1.5, 2, 3, 4 & 5 Litre  
now available  
with Induction Base!



The base thickness of this new range has been suitably modified to work well on gas, induction, electric, ceramic, halogen cooktops also.



**CODE  
ICL15**

**1.5 LITRE**



**INDUCTION  
COMPATIBLE**

**IDEAL FOR  
1 OR 2 PERSONS**

**CODE  
ICL2T**

**2 LITRE  
TALL**



**INDUCTION  
COMPATIBLE**

**IDEAL FOR  
2 OR 3 PERSONS**

**CODE  
ICL3T**

**3 LITRE  
TALL**



**INDUCTION  
COMPATIBLE**

**IDEAL FOR  
3 OR 4 PERSONS**

**CODE  
ICL3W**

**3 LITRE  
WIDE**



**INDUCTION  
COMPATIBLE**

**IDEAL FOR  
3 OR 4 PERSONS**

**CODE  
ICL40**

**4 LITRE**

**INDUCTION  
COMPATIBLE**



**IDEAL FOR  
4 TO 6 PERSONS**

**CODE  
ICL50**

**5 LITRE**

**INDUCTION  
COMPATIBLE**



**IDEAL FOR  
5 TO 7 PERSONS**

PRODUCT CODE	CAPACITY (LITRE)	BASE FLAT DIAMETER (mm)	BASE THICKNESS (mm)	EAN CODE	CASE PACK
ICL15	1.5	130	4.06	8901165099842	12
ICL2T	2 (TALL)	130	4.06	8901165400846	9
ICL3T	3 (TALL)	134	4.06	8901165096841	9
ICL3W	3 (WIDE)	152	3.25	8901165093840	9
ICL40	4 (TALL)	152	4.06	8901165094847	6
ICL50	5	164	4.06	8901165095844	6



**New**



**3 LITRE**  
**CODE: IIH3T**



## HAWKINS INSTAA PRESSURE COOKER

The Hawkins Instaa Pressure Cooker is hard anodised inside and out. The beautiful, durable black finish given by 60 microns thick hard anodised has several benefits. It is non-toxic, non staining and non-reactive with most foods, making it one of the most hygienic pressure cookers available. It makes the pressure cooker absorb heat faster, making it more energy-efficient. It does not pit or tarnish and stays looking new for years. It is not nonstick. Suitable for both gas & induction. The 4.06 mm extra thick induction base stays flat always and so that heats evenly, food does not burn and stick. The smooth hard anodised finish of the inside cooking surface is ideal for light frying of masalas prior to pressure cooking. And cleaning is so easy too!



CODE  
IIH15

1.5 LITRE



IDEAL FOR  
1 OR 2 PERSONS

CODE  
IIH3T

3 LITRE



IDEAL FOR  
3 OR 4 PERSONS

CODE  
IIH2T

2 LITRE



IDEAL FOR  
2 OR 3 PERSONS

CODE  
IIH50

5 LITRE

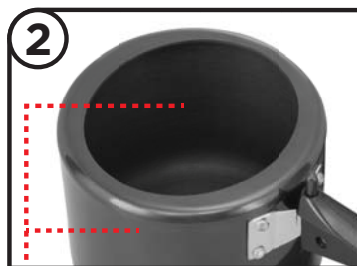


IDEAL FOR  
5 OR 7 PERSONS

PRODUCT CODE	CAPACITY (LITRE)	BASE FLAT DIAMETER (mm)	BASE THICKNESS (mm)	EAN CODE	CASE PACK
IIH15	1.5	130	4.06	8901165401843	12
IIH2T	2	130	4.06	8901165402840	9
IIH3T	3	134	4.06	8901165093642	9
IIH50	5	164	4.88	8901165405841	6



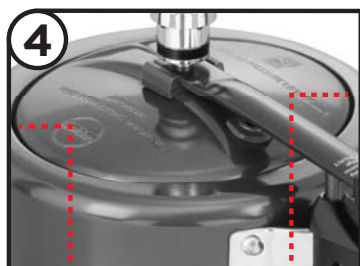
New Efficient Pressure Regulator — Cooks faster, Easy to insert & remove



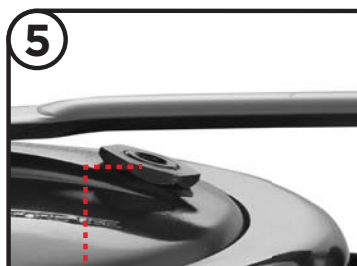
Hard Anodised inside and out — Non-toxic, hygienic cooking surface, does not pit or tarnish, stays looking new for years.



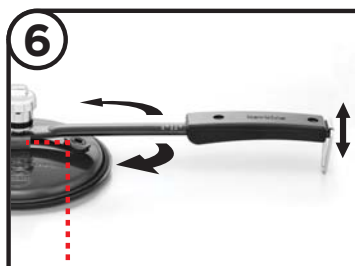
Heavy gauge, Extra-thick Induction Base — heats quickly and evenly, food will not burn or stick, stays flat on Gas + Induction



Inside-Fitting Safety Lid — will not open till pressure inside drops to a safe level



Shielded Safety Valve — Safely deflects steam downwards when it operates



'Play' or Movement designed in the Lid Handle for perfect sealing & leak-free pressure cooking



Food-grade Gasket — Lasts longer, does not rub each time the lid is opened or closed





**5 LITRE**  
**CODE: IH50**



## **INDUCTION COMPATIBLE HAWKINS HEVIBASE PRESSURE COOKER**

A double-thick 6.35 mm base, which is hard anodised and an Induction Compatible disc attached under high pressure to ensure a base that is permanent and heats quickly and evenly. The double-thick, heavy gauge base is ideal for light frying before pressure cooking. The base stays flat, never bulges. Plus, all the features of the Hawkins Classic Pressure Cooker.

Suitable for gas, induction, electric, ceramic and halogen cooktops.

CODE  
IH20



2 LITRE

IDEAL FOR  
2 OR 3 PERSONS

CODE  
IH30



3 LITRE

IDEAL FOR  
3 OR 4 PERSONS

CODE  
IH35



3.5 LITRE

IDEAL FOR  
4 OR 5 PERSONS

CODE  
IH50



5 LITRE

IDEAL FOR  
5 TO 7 PERSONS

CODE  
IH65



6.5 LITRE

IDEAL FOR  
7 TO 9 PERSONS

CODE  
IH80



8 LITRE  
WIDE BODY

IDEAL FOR  
8 TO 11 PERSONS

PRODUCT CODE	CAPACITY (LITRE)	BASE FLAT DIAMETER (mm)	BASE THICKNESS (mm)	EAN CODE	CASE PACK
IH20	2	144	6.35	8901165631820	9
IH30	3	144	6.35	8901165632827	6
IH35	3.5	164	6.35	8901165634821	6
IH50	5	164	6.35	8901165630823	6
IH65	6.5	164	6.35	8901165633824	4
IH80	8 (WIDE BODY)	200	6.35	8901165635828	4

## Abridged Recipe for Vegetable *Biryani* (Rice Layered with Spicy Vegetables)

Pressure  
Cooking  
Time:  
3 minutes

### For 5 Litre Model: Serves 7

1. Grind ginger, garlic, chillies into a paste with water.
2. Boil 5 cups water in cooker. Add salt, spices and rice. Boil 5 minutes without vent weight. Remove cooker from heat. Transfer rice to a colander and drain.
3. Heat one-fourth cup ghee in cooker 2 minutes. Add onions, ginger paste, cut potatoes and cauliflower. Fry 3 minutes. Add cut beans, carrots and peas. Fry 2 minutes. Add red chilli, cumin and *garam masala* powders, tomatoes, coriander and mint leaves, lemon juice and salt. Fry 3 minutes. Add *paneer*. Mix gently. Add 1 cup water. Stir.
4. Remove cooker from heat. Place rice on vegetables. Dribble saffron-milk over rice. Add hot ghee and cumin seeds.
5. Close cooker. Bring to pressure and cook 3 minutes. Remove cooker from heat. Allow to cool naturally. Release pressure. Open cooker.
6. Garnish with almonds and mint leaves. Serve hot with butter or curd.







**ceramic**  
nonstick



**2 LITRE**  
**CODE: ICC20**

**New**



### **HAWKINS CERAMIC NONSTICK INDUCTION COMPATIBLE PRESSURE COOKER**

The Hawkins Ceramic Nonstick Induction Pressure Cooker has excellent release properties, which means that it uses less oil when cooking. Additionally, the nonstick coating is not spoiled by high heat, which allows you to cook crisper and tastier food. The German ceramic used in the nonstick coating is of high quality and lasts longer, making it a durable option for your kitchen. Another advantage of this cooker is that the Hawkins Ceramic Nonstick does not contain PFAS or heavy metals, making it a healthier and safer option for cooking.

The attractive ceramic coating on the outside is scratch and stain resistant, which means that it will stay looking new for years to come. In terms of performance, this cooker cooks fast and requires less oil. It also works on both gas and induction stovetops, making it a versatile option for any kitchen. Overall, this cooker is an excellent choice for anyone who wants to cook healthy and tasty food quickly and easily.



CODE  
ICC15

**WORKS ON GAS +  
INDUCTION**  
+ELECTRIC+CERAMIC+HALOGEN

1.5 LITRE



IDEAL FOR  
1 OR 2 PERSONS

CODE  
ICC20

**WORKS ON GAS +  
INDUCTION**  
+ELECTRIC+CERAMIC+HALOGEN

2 LITRE



IDEAL FOR  
2 OR 3 PERSONS

CODE  
ICC30

**WORKS ON GAS +  
INDUCTION**  
+ELECTRIC+CERAMIC+HALOGEN

3 LITRE



IDEAL FOR  
3 OR 4 PERSONS

CODE  
ICC50

**WORKS ON GAS +  
INDUCTION**  
+ELECTRIC+CERAMIC+HALOGEN

5 LITRE



IDEAL FOR  
5 TO 7 PERSONS

PRODUCT CODE	CAPACITY (LITRE)	BASE FLAT DIAMETER (mm)	BASE THICKNESS (mm)	EAN CODE	CASE PACK
ICC15	1.5	130	3.25	8901165653648	9
ICC20	2	134	3.25	8901165652641	9
ICC30	3	130	3.25	8901165650647	6
ICC50	5	150	4.06	8901165651644	6

Before  
First Cooking



After 1681 Cookings  
with wooden  
spatula



After 50 Cookings  
with metal spatula



Use of a wooden spatula is recommended, a metal spatula or any sharp object may cause nicks, cuts or chipping. The ceramic coating may stain, fade, scratch, or chip; this is fair wear and tear and is not covered under guarantee. This will not affect the functioning of the pressure cooker.



# Hawkins Contura®



**3 LITRE**  
**CODE: HC30**



## HAWKINS CONTURA PRESSURE COOKER

The Contura has all the features and benefits of the Classic plus a unique body with rounded sides for easier stirring, better visibility and easy removal of food. For difficult dishes which require a lot of stirring, the Contura is the ideal cooker. Stay-cool handles. Recommended for use on gas stoves.

**CODE  
HC15**

**1.5 LITRE**



**IDEAL FOR  
1 OR 2 PERSONS**

**CODE  
HC40**

**4 LITRE**



**IDEAL FOR  
4 TO 6 PERSONS**

**CODE  
HC20**

**2 LITRE**



**IDEAL FOR  
2 OR 3 PERSONS**

**CODE  
HC50**

**5 LITRE**



**IDEAL FOR  
5 TO 7 PERSONS**

**CODE  
HC30**

**3 LITRE**



**IDEAL FOR  
3 OR 4 PERSONS**

**CODE  
HC65**

**6.5 LITRE**



**IDEAL FOR  
7 TO 9 PERSONS**

**CODE  
HC35**

**3.5 LITRE**



**IDEAL FOR  
4 OR 5 PERSONS**

PRODUCT CODE	CAPACITY (LITRE)	BASE FLAT DIAMETER (mm)	BASE THICKNESS (mm)	EAN CODE	CASE PACK
HC15	1.5	130	3.25	8901165625843	12
HC20	2	134	3.25	8901165023847	9
HC30	3	130	3.25	8901165620848	9
HC35	3.5	150	3.25	8901165020846	8
HC40	4	130	3.25	8901165623849	6
HC50	5	150	3.25	8901165022840	6
HC65	6.5	150	3.25	8901165621845	4



**Hawkins**  
*Contura*  
 BLACK



**5 LITRE**  
**CODE: CB50**



## **HAWKINS CONTURA BLACK PRESSURE COOKER**

The Hawkins Contura Black models have all the features and benefits of the Hawkins Contura Pressure Cooker in a hard anodised body and stainless steel lid. The beautiful, durable black finish given by 60 microns thick hard anodising has two benefits. It makes the pressure cooker absorb heat faster making it more energy-efficient. And the pressure cooker stays looking new for years. Recommended for use on gas stoves.

**CODE  
CB15**

**1.5 LITRE**



**IDEAL FOR  
1 OR 2 PERSONS**

**CODE  
CB40**

**4 LITRE**



**IDEAL FOR  
4 TO 6 PERSONS**

**CODE  
CB20**

**2 LITRE**



**IDEAL FOR  
2 OR 3 PERSONS**

**CODE  
CB50**

**5 LITRE**



**IDEAL FOR  
5 TO 7 PERSONS**

**CODE  
CB30**

**3 LITRE**



**IDEAL FOR  
3 OR 4 PERSONS**

**CODE  
CB65**

**6.5 LITRE**



**IDEAL FOR  
7 TO 9 PERSONS**

**CODE  
CB35**

**3.5 LITRE**

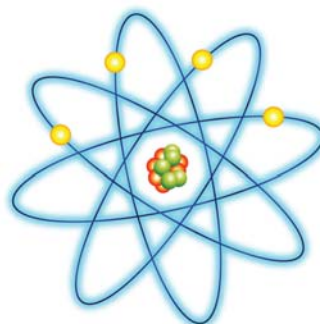


**IDEAL FOR  
4 OR 5 PERSONS**

PRODUCT CODE	CAPACITY (LITRE)	BASE FLAT DIAMETER (mm)	BASE THICKNESS (mm)	EAN CODE	CASE PACK
CB15	1.5	130	3.25	8901165624846	12
CB20	2	134	3.25	8901165027845	9
CB30	3	130	3.25	8901165028842	9
CB35	3.5	150	3.25	8901165025841	8
CB40	4	130	3.25	8901165622842	6
CB50	5	150	3.25	8901165026848	6
CB65	6.5	150	3.25	8901165029849	4

## What is Hard Anodising?

Hard Anodising was first developed by Russian scientists to produce a metal surface tough enough for space travel. The same technology is now used to make the most advanced Pressure Cooker. Through a process of electrolysis at sub-zero temperature using a high intensity electric current, a 60 micron thick layer of aluminium oxide ( $Al_2O_3$ ) is formed molecule by molecule as an integral part of pure, virgin aluminium. This process is called Hard Anodising. It produces a tough surface with wonderful properties for cooking.



- Thermal-efficient: heats fast and evenly
- Not spoilt by high heat
- 2.4 times harder than steel
- Non-toxic, non-staining, non-reactive with foods
- Will not pit, tarnish or corrode
- Stays looking new for years



CERAMIC-COATED  
**Hawkins**  
*Contura*  
 PRESSURE COOKER

**3 LITRE**  
**CODE: CTR30**



**CERAMIC-COATED HAWKINS CONTURA PRESSURE COOKER**

The Ceramic-Coated Hawkins Contura has all the features and benefits of the Hawkins Contura Pressure Cooker and has a non-toxic ceramic coating only on the exterior of the cooker body. The Ceramic-Coated body is scratch- and stain-resistant. The mouth of the cooker body is provided with a metallic rim for additional safety. It has a black base that heats quickly. Recommended for use on gas stoves.



**Black base  
 heats quickly**

CODE  
CMY30

3 LITRE



IDEAL FOR  
3 OR 4 PERSONS

CODE  
CMY50

5 LITRE



IDEAL FOR  
5 TO 7 PERSONS

CODE  
CAG30

3 LITRE



IDEAL FOR  
3 OR 4 PERSONS

CODE  
CAG50

5 LITRE



IDEAL FOR  
5 TO 7 PERSONS

CODE  
CTR30

3 LITRE



IDEAL FOR  
3 OR 4 PERSONS

CODE  
CTR50

5 LITRE



IDEAL FOR  
5 TO 7 PERSONS

PRODUCT CODE	CERAMIC COLOUR	CAPACITY (LITRE)	BASE FLAT DIAMETER (mm)	BASE THICKNESS (mm)	EAN CODE	CASE PACK
CMY30	MUSTARD YELLOW	3	130	3.25	8901165650142	6
CAG30	APPLE GREEN	3	130	3.25	8901165650548	6
CTR30	TOMATO RED	3	130	3.25	8901165650043	6
CMY50	MUSTARD YELLOW	5	150	3.25	8901165651149	6
CAG50	APPLE GREEN	5	150	3.25	8901165651545	6
CTR50	TOMATO RED	5	150	3.25	8901165651040	6



# Hawkins

## Contura<sup>®</sup> XT

### BLACK



**5 LITRE**  
**CODE: CXT50**



#### **INDUCTION COMPATIBLE HAWKINS CONTURA BLACK XT PRESSURE COOKER**

The Induction Compatible Hawkins Contura Black **XT** Pressure Cooker has all the features and benefits of the Hawkins Contura Black Pressure Cooker. Additionally, permanently attached to the **Xtra Thick** base is a plate of AISI 430 grade magnetic stainless steel which makes the cooker Induction compatible. The 4.88 mm **Xtra Thick** base cooks quickly and evenly and retains heat well.

Suitable for gas, induction, electric, ceramic and halogen cooktops.

CODE  
CXT15

1.5 LITRE



IDEAL FOR  
1 OR 2 PERSONS

CODE  
CXT20

2 LITRE



IDEAL FOR  
2 OR 3 PERSONS

CODE  
CXT30

3 LITRE



IDEAL FOR  
3 OR 4 PERSONS

CODE  
CXT35

3.5 LITRE



IDEAL FOR  
4 OR 5 PERSONS

CODE  
CXT50

5 LITRE



IDEAL FOR  
5 OR 7 PERSONS



4.88 mm  
Xtra Thick Base  
is more Durable,  
stays flat  
on Gas + Induction

PRODUCT CODE	CAPACITY (LITRE)	BASE FLAT DIAMETER (mm)	BASE THICKNESS (mm)	EAN CODE	CASE PACK
CXT15	1.5	134	4.88	8901165464848	9
CXT20	2	141	4.88	8901165662848	9
CXT30	3	143	4.88	8901165661841	6
CXT35	3.5	150	4.88	8901165663845	6
CXT50	5	150	4.88	8901165660844	4





# Tri-Ply Stainless Steel



## HAWKINS STAINLESS STEEL INDUCTION COMPATIBLE TRI-PLY PRESSURE COOKER

The 3mm extra-thick tri-ply stainless steel body has several benefits: It spreads heat evenly through the base and up the side walls of the pressure cooker, cooking the food quickly and evenly from all sides. Lightly fry or deep fry and mix masalas without any sticking or burning. Cook healthy and hygienic dishes using less oil by virtue of the special tri-ply protection given to the 18/8, food-grade, superior stainless steel cooking surface. The outer surface of AISI 430 magnetic stainless steel makes the pressure cooker work well on gas, induction, electric, ceramic or halogen cooktops. The strong, extra-thick body ensures that the base stays flat and always in contact with the cooking surface.

The wider mouth and sloping walls makes it easier to stir and easier to see the food while cooking. It is more convenient as well to insert and remove containers for indirect cooking inside the pressure cooker body.



CODE  
HSST25

2.5 LITRE



IDEAL FOR  
2 OR 4 PERSONS

CODE  
HSST35

3.5 LITRE



IDEAL FOR  
4 OR 5 PERSONS

PRODUCT CODE	CAPACITY (LITRE)	BASE FLAT DIAMETER (mm)	BASE THICKNESS (mm)	EAN CODE	CASE PACK
HSST25	2.5	120	3	8901165601809	6
HSST35	3.5	143	3	8901165600802	6

## Hawkins 3 mm Extra-Thick Tri-Ply

### 1 Cooking Surface

AISI 304 18/8 food-grade Stainless Steel — healthy and low-oil cooking

### 2 Core

Heavy Gauge Aluminium — spreads heat evenly

### 3 Base & Outer Surface

AISI 430 Magnetic Stainless Steel — Works on Gas and Induction

①

②

③





STAINLESS STEEL  
**Hawkins**  
*Contura*



**3 LITRE**  
**CODE: SSC30**



**INDUCTION COMPATIBLE  
 STAINLESS STEEL HAWKINS CONTURA  
 PRESSURE COOKER**

The Stainless Steel Hawkins Contura has all the features and benefits of the Hawkins Contura Pressure Cooker, with a body and lid made from superior grade AISI 304 non-magnetic stainless steel. The cooker has an external base of AISI 430 grade magnetic stainless steel which makes it Induction Compatible. It has a 6.6 mm thick sandwich bottom to ensure uniform heating and no hotspots. The base always stays flat and never bulges.

The cooker body has curved sides for easy stirring. It stays bright, does not pit or corrode, is extremely hygienic and stays looking new for years. Suitable for use on all domestic gas, electric, halogen, ceramic and induction cooktops.

CODE  
SSC15

1.5 LITRE



IDEAL FOR  
1 OR 2  
PERSONS

CODE  
SSC35

3.5 LITRE



IDEAL FOR  
4 OR 5  
PERSONS

CODE  
SSC20

2 LITRE



IDEAL FOR  
2 OR 3  
PERSONS

CODE  
SSC50

5 LITRE



IDEAL FOR  
5 TO 7  
PERSONS

CODE  
SSC30

3 LITRE



IDEAL FOR  
3 OR 4  
PERSONS

PRODUCT CODE	CAPACITY (LITRE)	BASE FLAT DIAMETER (mm)	BASE THICKNESS (mm)	EAN CODE	CASE PACK
SSC15	1.5	125	6.58	8901165673806	9
SSC20	2	127	6.58	8901165671802	6
SSC30	3	131	6.58	8901165670805	6
SSC35	3.5	156	6.68	8901165674803	6
SSC50	5	156	6.68	8901165672809	4



- Body and Lid 18Cr/8Ni  
AISI 304 superior surgical grade  
Non-magnetic stainless steel
- Induction Compatible Base  
AISI 430 magnetic stainless steel

### Recipe for Gajar ka Halwa (Carrot Pudding)

For 3 Litre Model: Serves 5

- carrots** 6 large (2 lb 7 oz / 1.1 kg)  
peeled and grated
- milk#** ¼ cup / 60 ml
- sugar** 1 cup + 3 tbsp / 240 g
- mava/khoya\*** 1½ cups + 1½ tbsp /  
240 g crumbled
- ghee** ¼ cup / 50 g
- almonds** 12 blanched,  
skins removed and sliced
- \* whole dried milk

#When cooking on Induction use ½ cup or 120 ml water instead of milk

**Pressure  
Cooking  
Time:  
0 minute**

1. Put carrots and milk in cooker.
2. Close cooker. Bring to full pressure on high heat. Remove cooker immediately from heat. Release pressure with slight lifting of vent weight. Open cooker.
3. Place open cooker with carrots and milk on high heat. Add sugar. Cook till liquid dries up (about 13 minutes), stirring occasionally. Add mava and ghee. Cook till ghee shows separately (about 8 minutes), stirring constantly. Serve hot, garnished with almonds.





# Hawkins<sup>®</sup>

## STAINLESS STEEL



**5 LITRE**  
**CODE: HSS50**



### **INDUCTION COMPATIBLE HAWKINS STAINLESS STEEL PRESSURE COOKER**

The body and lid are 100% stainless steel. To ensure uniform heating, the bottom has a core of 4.06 mm thick aluminium sandwiched between two sheets of stainless steel. The base always stays flat, never bulges.

Stainless steel stays bright, does not pit or corrode, is easy to clean and extremely hygienic. Can be used safely for light and deep frying and pressure cooking.

Suitable for gas, induction, electric, ceramic and halogen cooktops.

CODE  
HSS15



1.5 LITRE

IDEAL FOR  
1 OR 2 PERSONS

CODE  
HSS20



2 LITRE

IDEAL FOR  
2 OR 3 PERSONS

CODE  
HSS3T



3 LITRE  
TALL

IDEAL FOR  
3 OR 4 PERSONS

CODE  
HSS3W



3 LITRE

IDEAL FOR  
3 OR 4 PERSONS

CODE  
HSS40



4 LITRE

IDEAL FOR  
4 TO 6  
PERSONS

CODE  
HSS50



5 LITRE

IDEAL FOR  
5 TO 7  
PERSONS

CODE  
HSS60



6 LITRE

IDEAL FOR  
6 TO 8 PERSONS

CODE  
HSS80



8 LITRE

IDEAL FOR  
8 TO 11 PERSONS

CODE  
HSS10



10 LITRE

IDEAL FOR  
10 TO 14 PERSONS

PRODUCT CODE	CAPACITY (LITRE)	BASE FLAT DIAMETER (mm)	BASE THICKNESS (mm)	EAN CODE	CASE PACK
HSS15	1.5	125	5.80	8901165049809	9
HSS20	2	130	5.80	8901165045801	8
HSS3T	3 (TALL)	130	5.80	8901165048802	6
HSS3W	3	158	5.80	8901165040806	6
HSS40	4	158	5.80	8901165046808	4
HSS50	5	158	5.80	8901165041803	4
HSS60	6	158	5.80	8901165047805	4
HSS80	8	196	7.00	8901165043807	4
HSS10	10	196	7.00	8901165044804	2

Induction  
Compatible  
Base  
AISI 430  
magnetic  
stainless  
steel



Body and Lid  
18Cr/8Ni AISI 304  
surgical grade  
non-magnetic  
stainless steel





**5 LITRE**  
**CODE: IFP50**



## **FUTURA PRESSURE COOKER**

A beautiful combination of form and function, Futura is the only pressure cooker in the world to have been displayed by The Museum of Modern Art, New York.

Futura cooks on average 46% faster than a microwave oven.

The beautiful, durable black finish given by 60 microns thick hard anodising has two benefits. It makes the pressure cooker absorb heat faster making it more energy-efficient. And the pressure cooker stays looking new for years.

The unique pressure regulating system gives you the convenience of finger-tip pressure release and prevents clogging of the steam vent. The double-thick base stays flat, heats evenly and is ideal for light frying before pressure cooking.

Suitable for gas, electric, ceramic and halogen. Induction Compatible models available in 2 Litre, 3 Litre, 4 Litre, 5 Litre and 6 Litre.

CODE  
FP20



CODE  
IFP20



INDUCTION  
COMPATIBLE

2 LITRE

IDEAL FOR  
2 OR 3 PERSONS

CODE  
FP30



CODE  
IFP30



INDUCTION  
COMPATIBLE

3 LITRE

IDEAL FOR  
3 OR 4 PERSONS

CODE  
FP40



CODE  
IFP40



INDUCTION  
COMPATIBLE

4 LITRE

IDEAL FOR  
4 TO 6 PERSONS

CODE  
FP50



CODE  
IFP50



INDUCTION  
COMPATIBLE

5 LITRE

IDEAL FOR  
5 TO 7 PERSONS

CODE  
FP60



CODE  
IFP60



INDUCTION  
COMPATIBLE

6 LITRE

IDEAL FOR  
6 TO 8 PERSONS

CODE  
FP7T



7 LITRE

IDEAL FOR  
7 TO 10 PERSONS

CODE  
FP7J



7 LITRE  
JUMBO

IDEAL FOR  
7 TO 10 PERSONS

CODE  
FP90



9 LITRE

IDEAL FOR  
9 TO 13 PERSONS

PRODUCT CODE	CAPACITY (LITRE)	BASE FLAT DIAMETER (mm)	BASE THICKNESS (mm)	EAN CODE	CASE PACK
FP20	2	134	6.35	8901165058535	6
IFP20	2	134	6.35	8901165648538	6
FP30	3	152	6.35	8901165050539	6
IFP30	3	152	6.35	8901165640532	6
FP40	4	179	6.35	8901165056531	4
IFP40	4	179	6.35	8901165646534	4
FP50	5	179	6.35	8901165052533	4
IFP50	5	179	6.35	8901165642536	4
FP60	6	179	6.35	8901165057538	4
IFP60	6	179	6.35	8901165647531	4
FP7T	7	179	6.35	8901165053530	2
FP7J	7 (JUMBO)	200	6.35	8901165054537	2
FP90	9	200	6.35	8901165055534	2



**STAINLESS STEEL**  
**FUTURA®**  
**PRESSURE COOKER**



**4 LITRE**  
**CODE: FSS40**



**INDUCTION COMPATIBLE**  
**FUTURA PRESSURE COOKER**  
**IN STAINLESS STEEL**

The beautiful form and function of the Futura Pressure Cooker – executed in stainless steel. The 7 mm thick base contains a 4.9 mm thick aluminium disc sandwiched in stainless steel for efficient heat dispersion.

Suitable for gas, electric, ceramic, halogen and induction cooktops.

CODE  
FSS40

4 LITRE



IDEAL FOR  
4 TO 6 PERSONS

CODE  
FSS55

5.5 LITRE



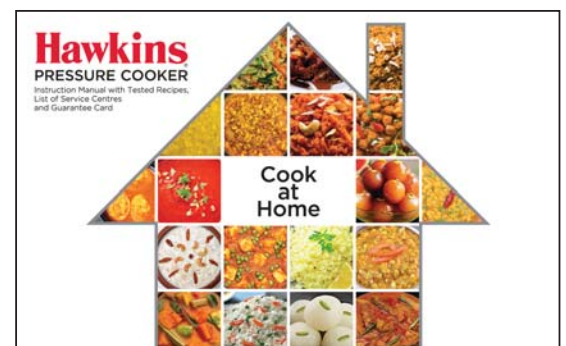
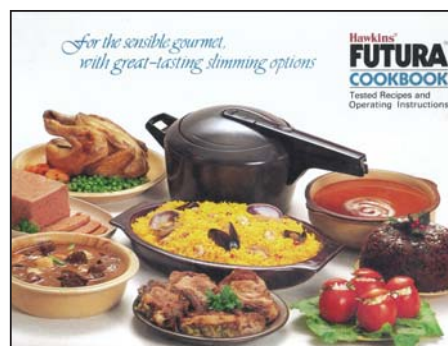
IDEAL FOR  
6 OR 7 PERSONS

PRODUCT CODE	CAPACITY (LITRE)	BASE FLAT DIAMETER (mm)	BASE THICKNESS (mm)	EAN CODE	CASE PACK
FSS40	4	173	7.00	8901165063539	4
FSS55	5.5	173	7.00	8901165062532	4

## THE HAWKINS TEST KITCHEN

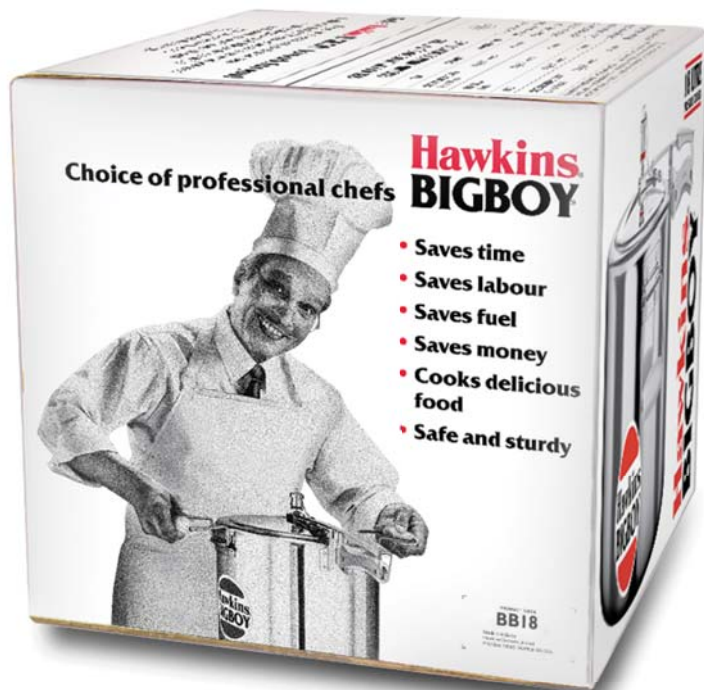
All Cookbooks and Instruction Manuals are written by the Hawkins Test Kitchen. The Test Kitchen writes instructions for the user, develops recipes and solves customer problems. Established in 1984, it has since then tested hundreds of

products before launch. If a prototype has some issues the Test Kitchen sends it back to the R&D Centre for improving the design. The Test Kitchen tests products from the consumer's point of view.





# Hawkins® BIGBOY™



## HAWKINS BIGBOY PRESSURE COOKER

The Bigboy range has been specially designed to cook large quantities of food quickly and economically. It is most useful in restaurants, hotels, canteens in factories, hospitals, schools and colleges. Also, canteens in many civil or military government establishments are using the Hawkins Bigboy.

The 18 Litre and 22 Litre Bigboy Pressure Cookers have a pair of sturdy lifting handles attached to the sides of the pressure cooker for convenience in handling the heavy weight carried by such pressure cookers. The plastic handles of all Bigboy Pressure Cookers are made from reinforced fibreglass for extra strength. Similarly, all other components of Bigboy Pressure Cookers are made for heavy duty. A chain is attached to the vent weight to prevent loss in busy kitchens.

Recommended for use on gas or kerosene stoves. They may also be used on coal burning or firewood stoves provided a suitable gap of at least 1 inch is kept between the fuel and the bottom of the cooker.



**18 LITRE**  
**CODE: BB18**

CODE  
BB14

14 LITRE



IDEAL FOR  
14 TO 18  
PERSONS

CODE  
BB18

18 LITRE



IDEAL FOR  
18 TO 24  
PERSONS

CODE  
BB22

22 LITRE



IDEAL FOR  
22 TO 30  
PERSONS

### COOK LARGE QUANTITIES OF HEALTHY, TASTY FOOD QUICKLY AND ECONOMICALLY

ITEM	QUANTITY IN 22 LITRE	COOKING TIME
RICE	16 kgs/35.3 pounds	29 minutes
RED GRAM ( <i>Tur Dal</i> )	15 kgs/33.1 pounds	29 minutes
SPICED CHICKPEAS CURRY ( <i>Channa Masala</i> )	13 kgs/28.7 pounds	48 minutes
SPICED MUTTON CURRY ( <i>Mutton Masala</i> )	16 kgs/35.3 pounds	39 minutes

PRODUCT CODE	CAPACITY (LITRE)	BASE FLAT DIAMETER (mm)	BASE THICKNESS (mm)	EAN CODE	CASE PACK
BB14	14	208	4.06	8901165030807	2
BB18	18	245	4.88	8901165032801	2
BB22	22	245	4.88	8901165031804	2





# Hawkins<sup>®</sup>

## CLASSIC

### WITH SEPARATORS



**5 LITRE  
WITH SEPARATORS  
CODE: CL51**

### HAWKINS CLASSIC PRESSURE COOKER WITH SEPARATORS

Make a quick-n-easy, delicious, healthful meal using the Hawkins Separator Set, that can cook 2 or 3 dishes at the same time in your Hawkins pressure cooker. Cook healthier, low-oil foods in pure steam. Save more time, more fuel. Plus, clean-up is much easier! Separator Sets have 2 or 3 food containers and a stand for convenient insertion and removal of the stack of containers. The versatile containers can also be used for steaming foods that are to be kept out of water, and for reheating foods conveniently.

Separator Sets are made of pure, virgin aluminium, and are presently offered packed inside 3 Hawkins Classic Pressure Cooker models: 5 Litre (with 2 containers) and 6.5 Litre & 10 Litre pressure cookers (with 3 containers). All 3 sizes are also offered without Separator Sets (see page 4).



### 6.5 LITRE WITH SEPARATORS



**CODE  
CL66**

### 10 LITRE WITH SEPARATORS



**CODE  
CL11**

PRODUCT CODE	CAPACITY (LITRE)	BASE FLAT DIAMETER (mm)	BASE THICKNESS (mm)	EAN CODE	CASE PACK	IDEAL FOR
CL51	5	164	3.25	8901165004945	6	2-3 Persons
CL66	6.5	164	3.25	8901165005942	4	3-4 Persons
CL11	10	208	4.06	8901165008943	4	4-6 Persons

# Hawkins®

## TWO-DISH SET

## THREE-DISH SET

TWO DISH SET  
CODE: SDS3



### TWO-DISH SET & THREE-DISH SET

Make a quick-n-easy, delicious, healthful meal using these Sets in your Hawkins pressure cooker, that can cook 2 or 3 dishes at the same time. Cook healthier, low-oil foods in pure steam. Save more time, more fuel. Plus, clean-up is much easier! These Sets have 2 or 3 hard anodised as well as 2 stainless steel food containers for healthy and hygienic cooking, and a stand for convenient insertion and removal of the stack of containers. The versatile containers can also be used for steaming foods that are to be kept out of water, and for reheating foods conveniently.

The Hard Anodised Two-Dish Set is suitable for use in many of our pressure cooker models between 4 and 6 Litre, and the Three-Dish Set for many of our pressure cooker models between 6.5 and 12 Litre.

The Stainless Steel Two-Dish Set is suitable for use in our pressure cooker models between 3 Litre Tall Classic & 4 Litre Contura

### TWO-DISH SET

CODE  
ADS5



### THREE-DISH SET

CODE  
ADS65



### TWO-DISH SET



CODE  
SDS3



PRODUCT CODE	NUMBER OF CONTAINERS	CAPACITY OF CONTAINERS (in ml)	EAN CODE	CASE PACK
ADS5	2	880	8901165925103	12
ADS65	3	880, 1300	8901165925110	12
<b>STAINLESS STEEL</b>				
SDS3	2	500, 775	8901165924052	12



# Hawkins® IDLI STAND

## HAWKINS IDLI STANDS

Make *idlis* easily and quickly at home, even if you've never made them before, with the Hawkins Idli Stand. Choose from 4 models for making 12 or 18 delicious, fluffy *idlis* at a time – in 6 minutes! Each Hawkins Idli Stand is securely packed in its own full-colour box, with full instructions on how to make *idli*, *chutney* and *sambar*.



**NEW!**  
**STAINLESS STEEL**  
**IDLI STAND**

**CAPACITY:**  
**12 IDLIS**  
**CODE: SSID5**

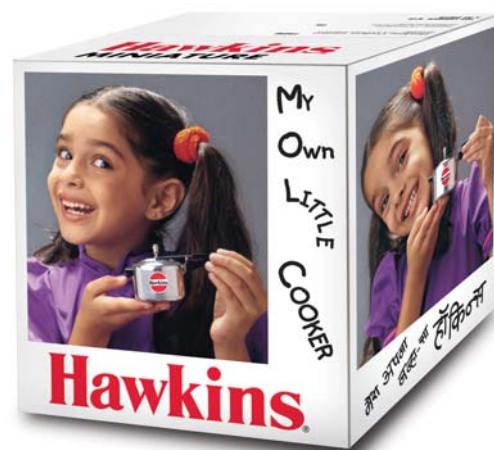


PRODUCT CODE	CAPACITY	DESIGNED FOR	EAN CODE	CASE PACK
ID12S	12 Idlis	3 Litre Tall	8901165913001	48
ID12L	12 Idlis	5 Litre	8901165910000	36
SSID5	12 Idlis	5 Litre	8901165914008	18
ID18L	18 Idlis	6.5 Litre	8901165911007	24

# Hawkins® MINIATURE

## HAWKINS MINIATURE COOKER

A faithful, non-working miniature reproduction of the 5 Litre Hawkins Classic Pressure Cooker – the body diameter is just 5.4 cm! The Hawkins Miniature Cooker comes individually packed in a scaled-down version of the Hawkins 5 Litre unit carton. 32 individually packed units are contained in an attractive full-colour display carton for effective display.



PRODUCT CODE	EAN CODE	CASE PACK
MIN	8901165930008	32

# Hawkins® PRESSURE COOKER

## GRID

**New**



## HAWKINS PRESSURE COOKER GRID

Use the versatile Hawkins Grid to;

- Steam food above the water (rather than immersed in liquid with flavours blending)
  - Minimise contact between food and the cooking liquid and/or the base
  - Steam foods in containers or cups
  - As a coaster or heat pad for the hot cooker body
- Grids are available in 11cm and 17cm diameter, suitable for Hawkins pressure cookers of mouth diameter 12cm and 18cm or more respectively.

PRODUCT CODE	DIAMETER (cm)	EAN CODE	CASE PACK
<b>ALUMINIUM</b>			
GRID11AL	11	8901165920160	5
GRID17AL	17	8901165920177	5
<b>STAINLESS STEEL</b>			
GRID11SS	11	8901165920184	5
GRID17SS	17	8901165920191	5

# Hawkins®

## REPAIR KIT



# Hawkins®

## Repair Kit

FOR PRESSURE COOKERS:\*



\*MADE FROM 2013 ONWARDS

THIS PACK CONTAINS:	CODE	NET QTY.
• BODY HANDLE WITH STUD AND SCREW (Version 2013)	B13	1 U
• SUBSIDIARY BODY HANDLE WITH SCREW (Version 2013)	SBH05	1 U
• HAWKINS PRESSURE COOKER GASKET	SG	1 U
• HAWKINS SAFETY VALVE	SV	1 U
• HAWKINS SPANNER	SP19	1 U

PRODUCT CODE  
**KIT5L**



MANUFACTURED BY  
HAWKINS COOKERS LTD., MAKER TOWER F 101  
CUFFE PARADE, MUMBAI 400 005  
MAHARASHTRA, INDIA

DO NOT BUY IF PACK IS  
TAMPERED OR OPEN.

CONSUMERS: ANY QUESTIONS OR COMMENTS? CONTACT:  
HAWKINS SERVICE DEPARTMENT  
UDYOG MANDIR 2, MAHIM, MUMBAI 400 016, MAHARASHTRA  
TEL: (022) 24 440 807, conserve@hawkinscookers.com  
[www.hawkinscookers.com](http://www.hawkinscookers.com)

### 5 Reasons to buy the Hawkins Repair Kit



Repair your pressure cooker yourself with just a screwdriver. Other parts and tools are in this pack.



Uninterrupted Meals.  
Your pressure cooker can be repaired and back to work in 5 minutes.



Guarantee of genuine parts.  
No risk of spurious parts when you buy parts later.



No charge for repair and avoid untrained or unscrupulous mechanics.



Take the kit abroad or to a town where there is no Hawkins Authorised Service Centre.

INSIDE: Repair instructions with illustrations to help you repair your cooker yourself.

### THE HAWKINS REPAIR KIT

Now you can do some repairs of your pressure cooker yourself and get back to cooking in just five minutes! All you need is a screwdriver – the other parts and tools are all there in the Hawkins Repair Kit. No more risk of using spurious parts, incurring unnecessary repair costs or dealing with untrained, unscrupulous mechanics. This kit is ideally suited to be used abroad, or in towns where there is no Hawkins Authorised Service Centre nearby.

PRODUCT CODE	EAN CODE	CASE PACK
KIT5L	8901165941011	10



## Main Parts of the Hawkins Pressure Cooker



## HAWKINS GENUINE SPARE PARTS

Hawkins has developed a complete range of genuine spare parts that may be required through the life of any Hawkins model across the entire range of our pressure cookers.

Simple replacement of parts like gasket, safety valve and handles can be done by you by following instructions provided in our cookbooks or on our website. Other repairs must be done only by an Hawkins authorized service centre or representative.

Expert, lifelong free service is available from over 800 Hawkins Authorised Service Centres in India. The list of Service Centres accompanies each pressure cooker shipped in India.

Pressure Cookers exported to other countries carry details of the party to be contacted in case of any requirement of parts or service.



# Main Parts of the Hawkins Pressure Cooker

## GASKET



OLD CODE	NEW CODE	APPLICABILITY	VERSION
A0009	MG	1.5L, SSC 2L, XT 2L, 1.5 & 2L Instaa	All
BG1	BG	2L-3L Tall, 3L Instaa All Contura 4 L	All
A3009	WG	3L Wide, 4L Tall	All
B1009	SG	3.5 to 8 litre Tall (except as above), SS 3L-7L, SSC 3.5L-5L, 5L Instaa, HSST 3.5L	All
D1009	IG	8L Wide-12L, BB 14L	All
E2009	LG	18L & 22L	All
F4016	BGF	Futura 3L	All
F1016	SGF	Futura 3.5L-7L, All Futura SS	All
O7016	IGF	Futura 7L Jumbo & 9L	All
B2509	BGSS	SS 2L, 3L Tall, SSC 3 L, HSST 2.5L	All
D3009	IGSS	SS 8L Wide & 10L	All

## SAFETY VALVE



OLD CODE	NEW CODE	APPLICABILITY	VERSION
SV1	SV	1.5L-14L	All
E2010	SVBB	BB 18L & 22L	All
F1012	SVF	2L-9L Hard Anodised	All
F5012	SVFSS	All SSF	All

## VENT WEIGHT / PRESSURE REGULATOR



OLD CODE	NEW CODE	APPLICABILITY	VERSION
B1020	VW75	1.5L-12L SS, SSC, BB	1975/1995
H1020	VW05	1.5L-12L	2005/2013
F1014	VWF	All 2L-9L	All

## VENT TUBE WITH NUT & WASHER



OLD CODE	NEW CODE	APPLICABILITY	VERSION
B1018	VT75	2L-8L Tall	1975
B1118	VT95	2L-8L Tall SS 2L-7L, SSC	1995
H1018	VT13	1.5L-8L Tall	2005/2013

## SUBSIDIARY BODY HANDLE WITH SCREW



OLD CODE	NEW CODE	APPLICABILITY	VERSION
B1505	SBH75	4L-12L	1975
B1905	SBH05	3.5L-12L (excluding all Contura)	'95/'05/'13
F5904	SBHF	Futura 5L and larger models	All

## BODY HANDLE WITH STUDS & SCREWS



OLD CODE	NEW CODE	APPLICABILITY	VERSION
B1501	BH75	2L-12L	1975
B1901	BH95	1.5L-12L	1995/2005
B2101	BH13	1.5L-12L	2013
E2901	BHBB22	18L & 22L	All
F5901	BHFSTD	5L to 7L, SSF 5.5L	2005

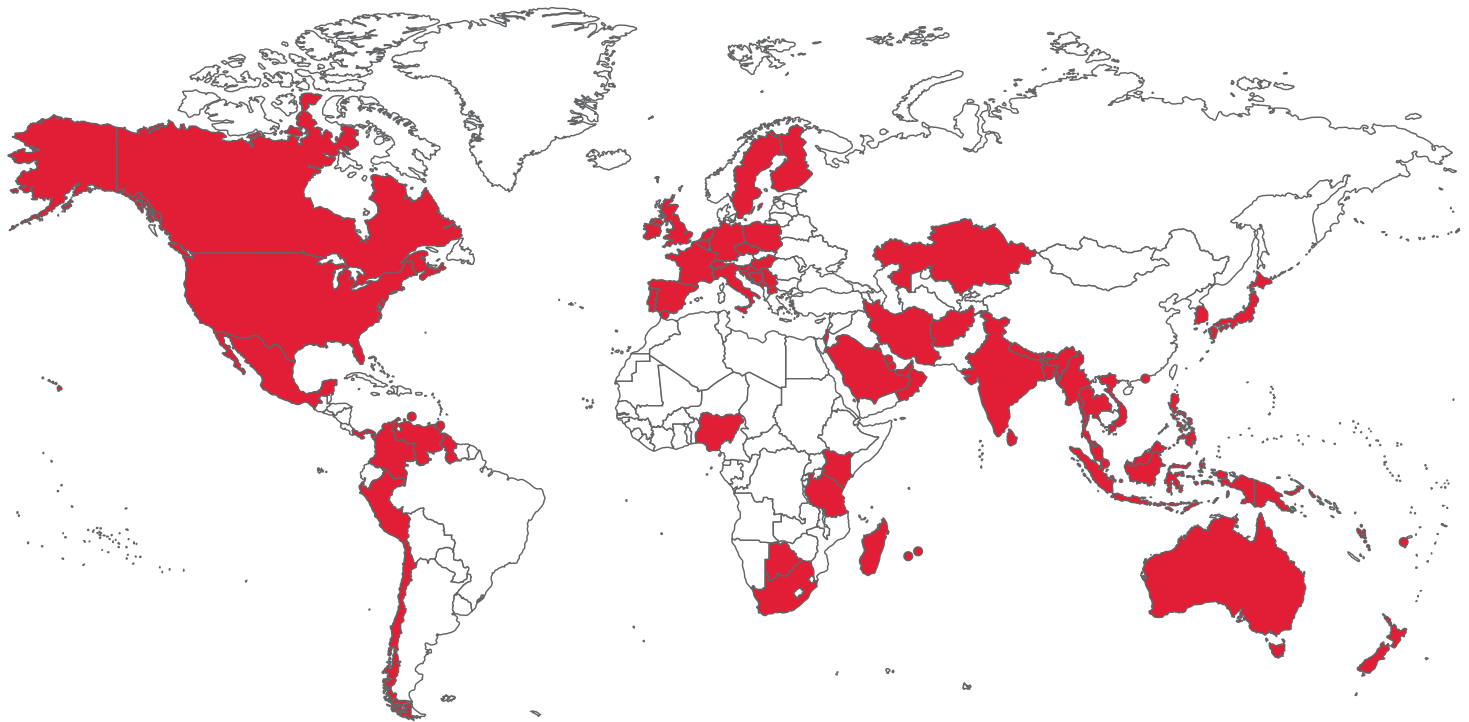
## LID HANDLE WITH RIVETS



OLD CODE	NEW CODE	APPLICABILITY	VERSION
B2113	LPH	1.5L-8L Tall	'95/'05/'13
D2113	LPHI	8L Wide-Body-12L	'95/'05/'13
E3013	LPHBB	14L-22L	All
F1908	LPHFS	All Futura 3.5L-7L	1994/2005



# 66 Countries in which Our 110 Million Products (Pressure Cookers & Cookware) have been sold.



## North America

- Canada
- Mexico
- Panama
- USA

## Europe

- Belgium
- Czech Republic
- Finland
- France
- Germany
- Gibraltar
- Hungary
- Ireland
- Italy
- Netherlands
- Poland
- Portugal
- Spain
- Sweden
- Switzerland
- United Kingdom
- Yugoslavia

## Africa

- Botswana
- Kenya
- Madagascar
- Mauritius
- Nigeria
- Réunion
- South Africa
- Tanzania

## Asia

- Afghanistan
- Bahrain
- Bangladesh
- Bhutan
- Burma
- Hong Kong
- India
- Indonesia
- Iran
- Israel
- Japan
- Kazakhstan
- Kuwait
- Malaysia
- Nepal
- Oman
- Philippines
- Qatar
- Saudi Arabia
- Singapore
- South Korea
- Sri Lanka
- Thailand
- UAE
- Vietnam

## Pacific

- Australia
- New Zealand
- Papua New Guinea
- Fiji
- Vanuatu

## Latin America

- Chile
- Colombia
- Curaçao
- Guyana
- Peru
- Trinidad & Tobago
- Venezuela



The entire contents of this catalog including designs, photography, text and logos are the property by Hawkins Cookers Limited. The products shown in this catalog are protected by patents and/or design registrations and/or other applicable laws concerning Intellectual Property Rights in India and in various other countries. All Product Specifications are correct as on October 1, 2023 and are subject to change without notice. Any unauthorised use of the aforesaid Intellectual Property Rights is a violation of law and may invite appropriate civil and criminal action.

Hawkins Cookers Limited is the proprietor of the Hawkins, Futura and Miss Mary Registered Trademarks in India and in many other countries throughout the world. © 2023 and all rights reserved.



**Hawkins Cookers Limited**

[www.hawkinscookers.com](http://www.hawkinscookers.com)

Corporate Identity Number: L28997MH1959PLC011304

**FOR EXPORTS ENQUIRIES CONTACT:**

New Udyog Mandir 2, Pitamber Lane  
Mahim, Mumbai 400 016  
Maharashtra, India

Tel: +91 (22) 2444 0807; Fax: +91 (22) 2444 9152

Email: [exports@hawkinscookers.com](mailto:exports@hawkinscookers.com)