

珠海科兴电子科技有限公司

Zhuhai Kexing Electronic Technology Co, Ltd

目 录

CONTENTS

1

公司介绍
Company Introduction

2

产品目录
Product List

3

主要客户
Main Customers

Company Introduction

01

Location

Factory : HUBEI

Office: GuangDong Zhuhai/Zhongshan

02

Production Capacity 5000 TONS/Year

03

Employee :100 workers

04

Factory Area: 20000+ Square Meter

Test Center: 2500 Square Meter

05

Product series : Compatible for Konica Minolta/ Ricoh/ Kyocera/ Canon/ Xerox/Sharp/Toshiba/HP/Samsung

Our Advantages



Professional Research &
Development Team member
10+ Expert



Over **20 years** manufacturing
experience



5000TONs production
capacity

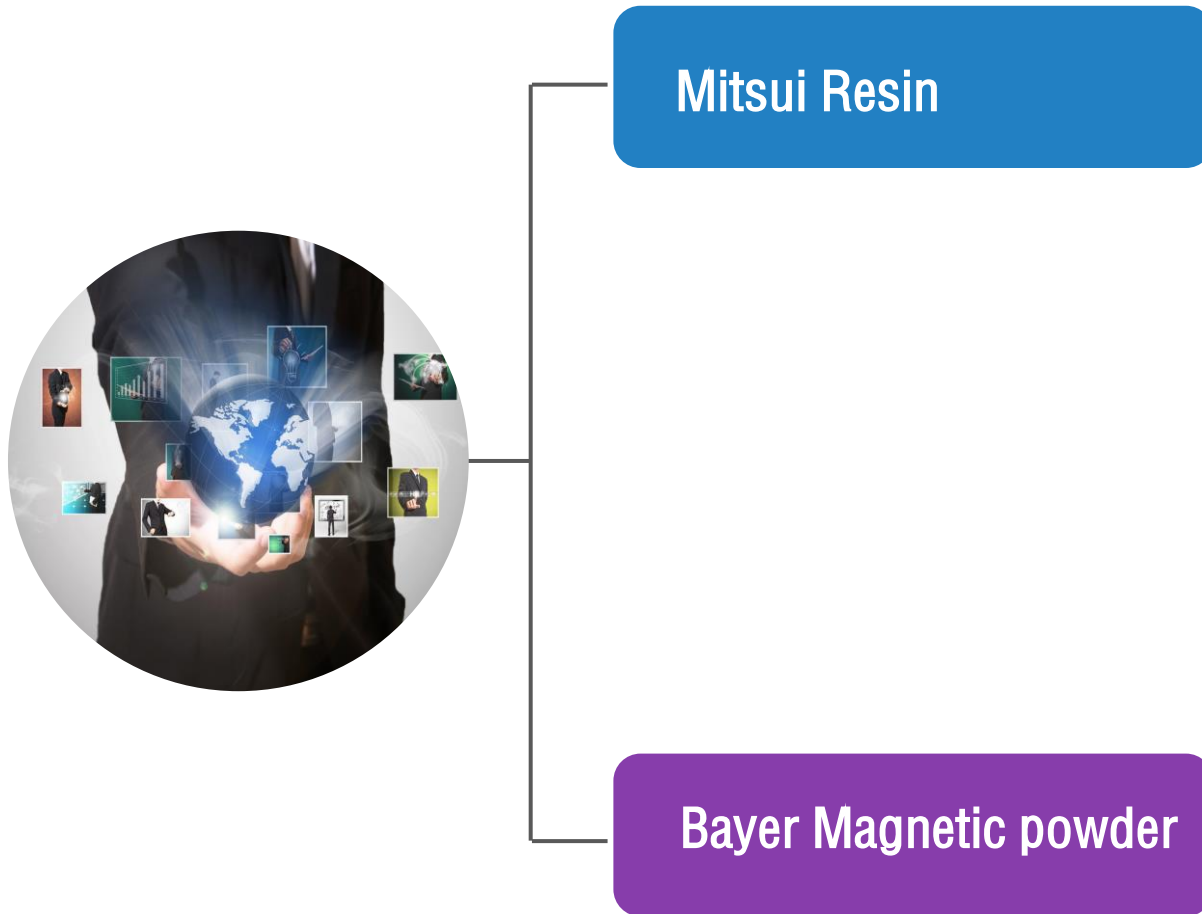
Full Quality control procedures
To make sure **Stable and High
Quality** products (100% testing
before Delivery)

Full range of products

Strong technical support
and **excellent after sales
service**



Main Raw Material



Factory view(HuBei)

Office



Production Building



Warehouse

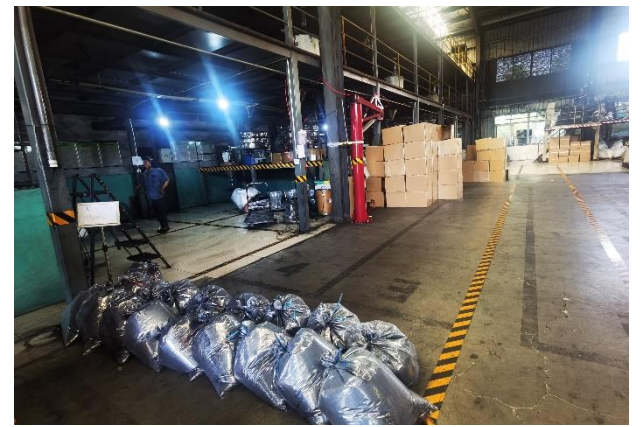
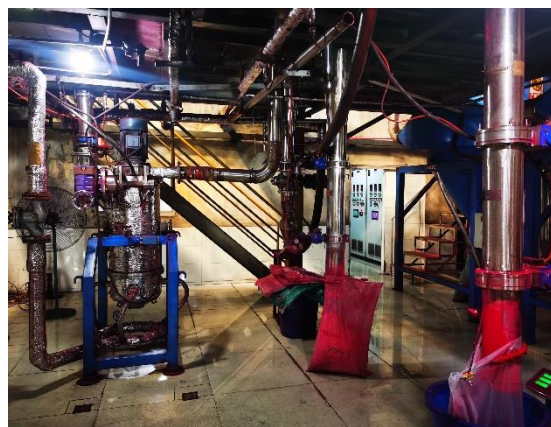


Production Building

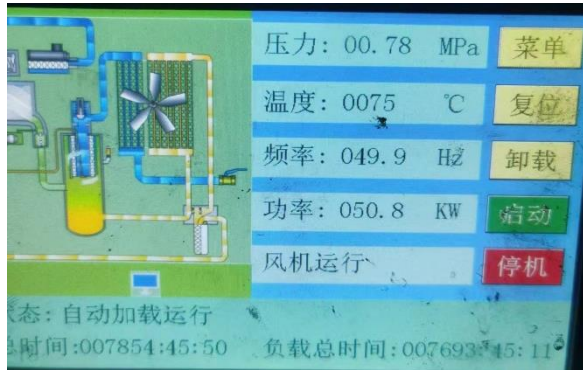


Production Process

(材料选用material selection) → (材料检验material inspection) → (配料ingredients)
→ (预混premix) → (混炼挤出mixing extrusion) → (粉碎分级grinding classification) → (后
处理post-process) → (成品FG) → (检验test) → (分装Packing)



Glance at Equipment



Office and Testing Center



Product Category –top sales

Compatible Brands



V5570/VI5571/7855



C512/321/328/613/619/615



3510/
6030/P3060d/PA4500x



MX30/MX60



G46/71/83/88



5503/2503/3500/4502/8002



255/355/455



M252dw/M252n/
M277dw/M277n/M72625dn

Our Main Customers

We have over 100 customers in China market, which includes but not limit below famous company.

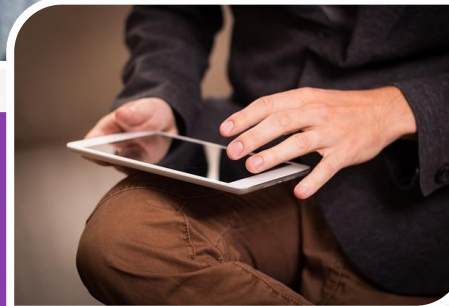
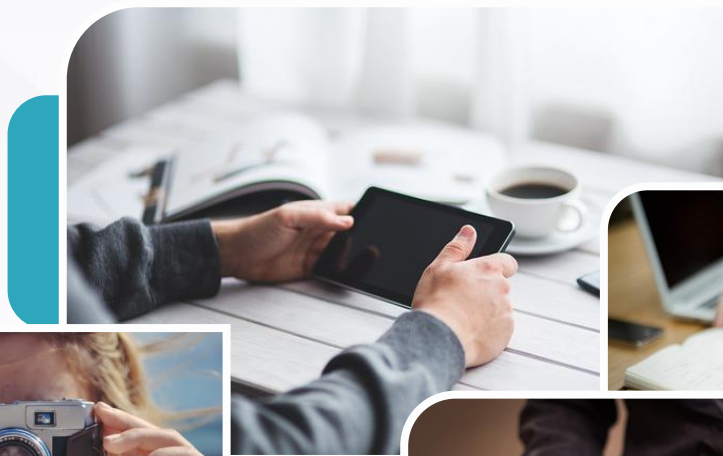
Our customers are toner cartridge factory & manufacturer in China market.

天威
Print-Rite

 PRINT-RITE

名图MITO

 Mito Color Imaging Co.,Ltd.
Members of Dinglong Group



纳思达 Ninestar

