



**smart
store™**

by orthex™

GastroMax™
by orthex™

CATALOGUE

Kitchen 2/2025



Smarter everyday cooking

www.orthexgroup.com

ORTHEX GROUP

Practical is beautiful

Orthex Group is a leading Nordic producer of household products with over 100 years of experience. We are proud to offer a broad assortment of products that are high quality, safe and functional.

Our brands are strong, well-known and actively marketed. Over 90% of all products are manufactured in Sweden and Finland in our own factories.



Long-lasting products



NORDIC DESIGN & QUALITY

Local production



Frequent use of recycled and reusable materials



CO₂ Neutral
Target: towards carbon neutral production by 2030

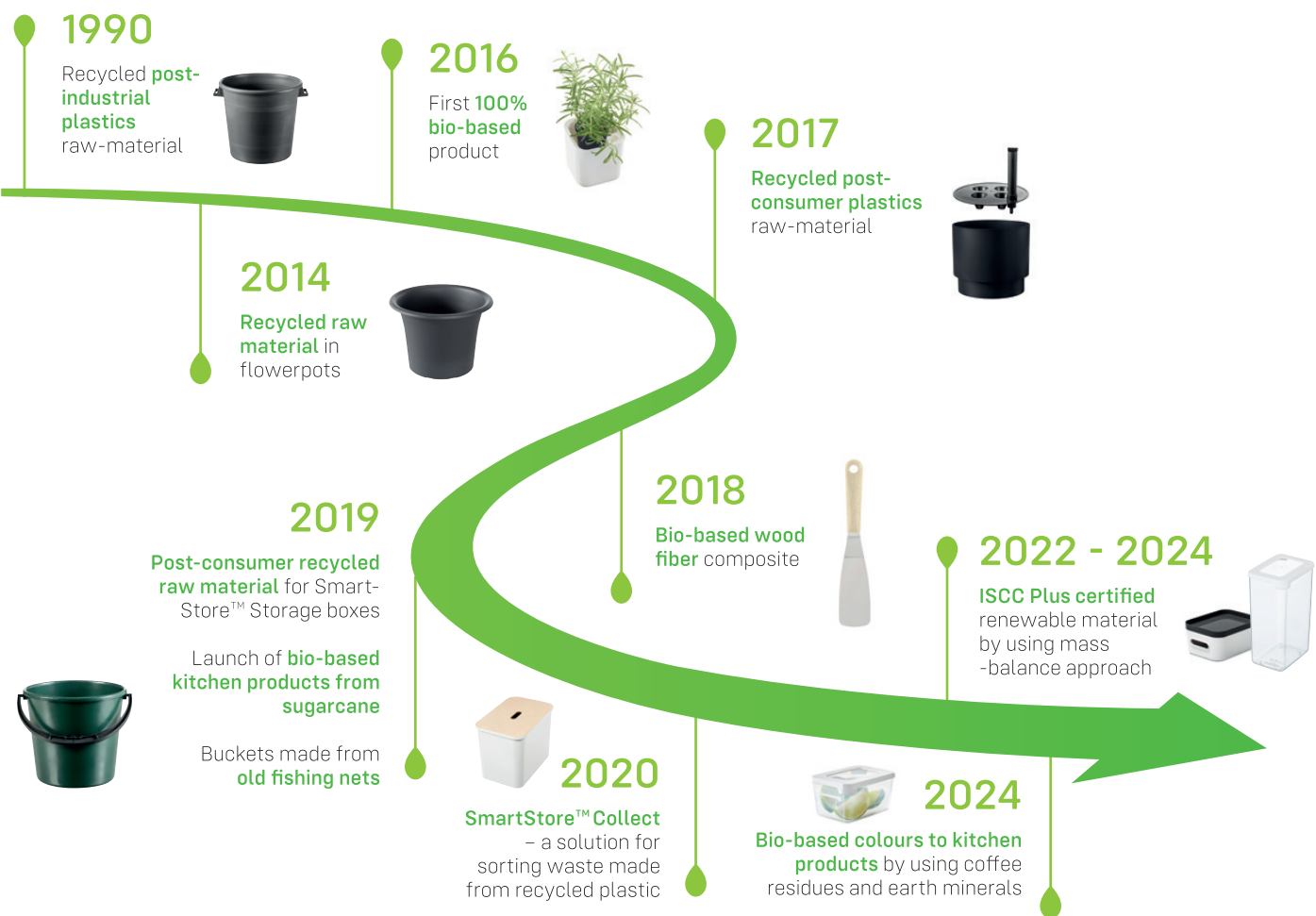
○ Local sales organisations

● Factories

● Warehouses

SUSTAINABLE SOLUTIONS

The main building block of our approach to sustainability are our products, sustainable raw materials, and our target towards carbon neutrality. Orthex's high-quality, safe, and durable products are made with care and timeless design. They are made for long-term use and are recyclable in all our markets. We are actively increasing the share of renewable and recycled raw materials in our products. We continuously strive to reduce the carbon footprint of our products and operations and are aiming towards carbon neutral production by 2030. With these priorities, our goal is to be an industry forerunner in sustainability.



SHOWING THE WAY IN SUSTAINABILITY

Orthex Group's reputation for sustainability is a vital business asset that depends on the commitment of all our people to act in accordance with our ambitious sustainability strategy. Every day through our actions, each of us is responsible for making our strategy come to life through sound judgement and firm business decisions. We have made a commitment to show the way in sustainability

in our industry and we are actively supporting the UN sustainability goals.

Orthex Group is always committed to conduct business in a sustainable and responsible manner and we are happy to help our partners and consumers to do the same through working with Orthex and by selecting Orthex Group products. Orthex's sustainability report, which

details Orthex's sustainability targets, achievements and efforts, is published annually. You can find it on our web site at www.orthexgroup.com

Alexander Rosenlew
Alexander Rosenlew
CEO



PHOTO COPYRIGHT WWF

CONTENTS

FOOD STORAGE

SmartStore™ Vision.....	8
SmartStore™ Snack	9
SmartStore™ Sustain.....	10
SmartStore™ Easy.....	11
SmartStore™ Fresh	12
SmartStore™ Frost	13

KITCHEN UTENSILS

Bio-based utensils.....	16
Ladles	18
Nylon utensils	20
Stainless steel utensils.....	22
Knives	25
Graters.....	26
Garlic press.....	27
Peelers & slicers	28
Other utensils.....	31
Cutlery trays & drainers.....	34

BAKING

Baking pans.....	36
Baking utensils	39
Measuring cups.....	40
Mixing bowls	41
Cookie cutters.....	42

TABLEWARE

Bio tableware.....	45
Classic tableware.....	46
Product symbols.....	47

IN-STORE SOLUTIONS

In-store solutions.....	48
-------------------------	----





GastroMax™
by orthex™

SMARTER EVERYDAY COOKING

At GastroMax™ we've spent the last 100 years designing straightforward and durable kitchenware that simplifies your life. Smart solutions that don't make a fuss. They stand by your side to help you make the most of your time and efforts - everyday.

SUSTAINABLE SOLUTIONS

Our products and services are created to be sustainable at the core and we are continuously optimizing our production processes to reduce environmental impact.

NORDIC DESIGN

Our design language is born from our Nordic values and Scandinavian heritage – always centred around human needs with the ambition to blend form and function.

POWERED BY PROFESSIONALS

Ever since the start over 100 years ago, we have collaborated with kitchen professionals to ensure our products are designed and tested to meet the demands of everyday life - as well as being safe to use.



**smart
store™**
by orthex™

FOOD STORAGE

SmartStore food storage seals in the taste and keeps food fresh for longer in the pantry, fridge and freezer.



VISION

Modular SmartStore™ Vision dry food keepers bring organization to the cupboard pantry and make efficient use of available space. See-through lids allow for easy identification of content in the kitchen drawer.

The products are made with 20 % bio-based plastic (mass balance approach).



Scan the QR code to read more:



Vision 0,75 L
11,5x11,5x10 cm
75010



Vision 1,45 L
11,5x11,5x20 cm
75110



Vision 0,35 L
12,5x9x5 cm
7723010



Vision 0,8 L
12,5x9x10 cm
7722010



Vision 1,6 L
12,5x9x20 cm
7725010



Vision 1,65 L
12,5x18x10 cm
7727010



Vision 3,5 L
18x12,5x20 cm
7728010



Vision 2,25 L
12,5x9x28 cm
7726010

NEW

NEW

SNACK

Lunch boxes in the SmartStore Snack range are made with 20 % bio-based plastic (mass balance approach).



Snack 0,3 L
12,5x9,5x4,5 cm
7831010



Snack 0,45 L
12,5x9,5x6 cm
7833010



Snack 0,6 L
18x12,5x4,5 cm
7832010



Snack 1 L
18x12,5x7 cm
7834010

smart
store™

by orthex™

SUSTAIN

SmartStore Sustain containers are made with 80 % bio-based plastic (mass balance approach). Airtight and leak-proof lids make them ideal lunch boxes.



Scan the QR code to read more:



bio
based



EASY



Easy 1,2 L
24x16x5,5 cm
1760686 ● 1760685 ●



Easy 1,1 L
18x18x7 cm
114676 ● 114675 ●



Easy 1,75 L
18x18x10 cm
115676 ● 115675 ●

FOOD STORAGE



Sustain 4 x 0.5 dl
5,5x5,5x10 cm
791770 ●



Sustain 0,3 L
12x12x4,5 cm
792770 ●



Sustain 0,45 L
12x12x6,5 cm
793770 ●



Sustain 0,6 L
12x12x8,5 cm
794770 ●



Sustain 1,6 L
25x17x6,5 cm
799770 ●

NEW



Sustain 0,5 L
16,5x12,5x4,5 cm
795770 ●



Sustain 0,8 L
16,5x12,5x6,5 cm
796770 ●



Sustain 1 L
16,5x12,5x8,5 cm
797770 ●



Sustain 2,2 L
25x17x8,5 cm
800770 ●

NEW



**smart
store™**

by orthex™

FRESH

With leak-proof lids and container sizes to suit every need, this range is great for storing various leftovers and packing lunch to go.



FOOD STORAGE

GLASS

Multipurpose containers in glass can be used to cook, serve and store food. Made from borosilicate glass, they withstand sudden temperature changes and can go straight from freezer to oven.



FROST

The modular freezer boxes nest to save storage space and stack to optimize freezer organization – even the different sizes together.



Frost 0,3 L
12x12x4,5 cm
801675 (6x0,3 L)



Frost 0,5 L
12x12x6,5 cm
802675 (5x0,5 L)



Frost 0,75 L
12x12x9,5 cm
803675 (4x0,75 L)



Frost 1 L
12x12x12,5 cm
804675 (3x1,0 L)



Frost 1,2 L
0x0x0 cm (0 L)
805675 (2x1,2 L)

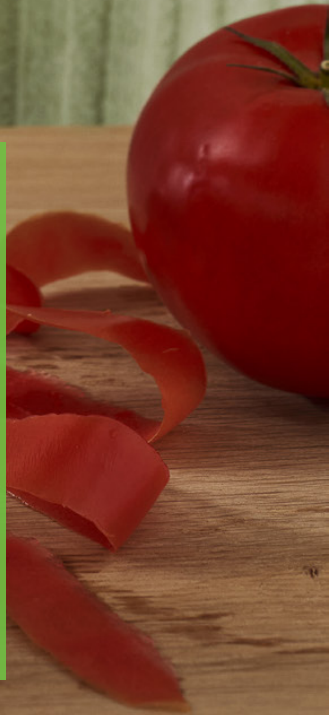


GastroMax™ by orthex™



KITCHEN UTENSILS

Having the right tools in the kitchen makes cooking a breeze. Our kitchen utensils make preparing food easier and more enjoyable in every home. They offer quality, handiness and a design that is well thought-out.



GastroMax™
by orthex™

BIO
BASED

BIO-BASED UTENSILS

The bio-based material used in these utensils is a mix of sugarcane and wood fiber from Nordic spruce. It combines the natural look and feel of wood with the functional benefits of plastic, such as being dishwasher proof.



Potato masher BIO
6,5x12x28,5 cm
7296-720



Cheese slicer BIO
1,5x7,5x21,5 cm
7248-720



Butter spreader BIO
1,5x3,5x22,5 cm
7200-720



Peeler BIO
1,5x2,5x18,5 cm
7230-720



Turner BIO
1,5x5x29 cm
7258-720



Balloon whisk BIO
7x7x29 cm
7231-720



Ladle BIO
10x9x31 cm
7213-720



Skimmer BIO
9x11,3x32 cm
7219-720



Slotted spatula BIO
2x9x32 cm
7226-720



Pasta spoon BIO
8x8x29,5 cm
7218-720



Paddle grater BIO
2x11x22 cm
7236-720



Whisk BIO
25,5x8x7 cm
7251-720



Peeler BIO
2x3x19 cm
7201-720



Pizza cutter BIO
2x9x22 cm
7269-720



Strainer BIO
8x14,5x30 cm
7214-720



Cutting board 25x15 cm BIO *
25x15x0,6 cm
132720



Cutting board 30x20,5 cm BIO *
30x20,5x0,6 cm
135720



Cutting board 35x25 cm BIO *
35x25x0,6 cm
133720

GastroMax™
by orthex™

**BIO
BASED**

BIO-BASED UTENSILS

GastroMax BIO nylon utensils are made from bio-based plastic derived from castor beans, glass fiber and polyamide. The products are durable, heat-resistant up to 210 °C and safe for non-stick cookware.



Spiral whisk BIO
28x8x8 cm
7616-15101 ●



Cooking spoon BIO
29x7,5x4,5 cm
7511-15101 ●



Soup ladle BIO
27x8x9 cm
7613-15101 ●



Turner BIO
31x7x5 cm
7614-15101 ●



Slotted turner BIO
29,5x9x5 cm
7626-15101 ●



Cooking tongs BIO
28,5x5,5x1,5 cm
7643-15101 ●



Pasta ladle BIO
29x8x5,5 cm
7618-15101 ●

KITCHEN UTENSILS

LADLES



Ladle S
22x5,5x3 cm
13720010 ● 13720070 ●
13720035 ● 13720075 ●

NEW



Ladle M
27x6,5x3,5 cm
13721010 ● 13721070 ●
13721035 ● 13721075 ●

NEW



Ladle L
30x7,5x4 cm
13722010 ● 13722070 ●
13722035 ● 13722075 ●

NEW



NYLON UTENSILS

This range of basic kitchen utensils offers the key functions every home chef needs. Nylon utensils are safe to use on non-stick cookware and have a high heat-resistance.



Spiral whisk
28x8x8 cm
6916-1 ●



Cooking spoon
29,5x7,5x4,5 cm
6911-1 ●



Pie server
27,5x5,5x4 cm
6540-1 ●



Balloon whisk
28x7,5x7,5 cm
6931-1 ●

Cuts cakes and pies without damaging non-stick bakeware. Balanced to keep the blade off the table.

Whips plenty of air into cream or batter.



Soup ladle
27x9x8 cm
6913-1 ●



Turner
31,5x6x5,5 cm
6914-1 ●



Slotted turner
29,5x9x5 cm
6926-1 ●



Cooking tongs
28,5x5,5x1,5 cm
6520-1 ●

Grooved tips for a secure hold on foods as you turn or lift them.



Pasta ladle
29x8x5,5 cm
6918-1 ●



Cheese slicer
20,5x7,5x2 cm
6530-1 ●

Slices all types of cheese. The sharp edge can be used for cutting cheese.

Comfortable handles with built-in thumb rests.



CHEF'S UTENSILS

Sturdy Chef's utensils have long handles to protect from heat and oil splashes, ideal for grilling or deep-frying. They won't scratch non-stick cookware.



Chef's wok spoon
34x9,5x4 cm
6823-7 ●



Chef's colander spoon
36,5x11,5x6 cm
6812-7 ●



Chef's turner
34x9x4 cm
6814-7 ●

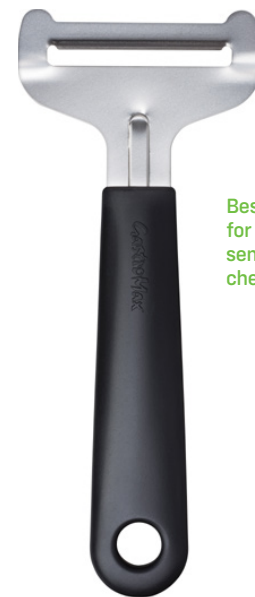
STAINLESS STEEL UTENSILS

These classic GastroMax™ utensils with steel blades are practical and longlasting products for everyday use.

Ideal for slicing hard to semi-hard cheese.
Blade surface prevents cheese from sticking.



Cheese slicer
21,5x7,5x1,5 cm
7048-1 ●



Soft cheese slicer
17,5x7,5x1,5 cm
7049-1 ●

Best suited
for soft to
semi-hard
cheese



Turner
29x5x2,5 cm
7058-1 ●



Potato masher
28,5 x 12 x 6,5 cm
7096-1 ●



Spiral whisk
25,5x7x7 cm
715-1 ●



Apple corer
20x2,5x1,5 cm
7066-1 ●



Paring knife
16,5x2x1,5 cm
7053-1 ●



Peeler
18,5x2,5x1,5 cm
7030-1 ●



Bottle opener
15x4x1,5 cm
7010-1 ●



Can opener
15x3x1,5 cm
7161-1 ●



Pie server
25x5,5x3 cm
7067-1 ●



Butter spreader
21,5x3x1,5 cm
7100-1 ●



Pizza slicer
20,5x7x1,5 cm
7069-1 ●

Easily cuts both
thin and thick
crust. A non-stick
coating on the
wheel prevents
cheese from
sticking. Safe to
use on non-stick
pans.





KNIVES

The GastroMax™ knives have ergonomic handles with non-slip surface and top quality stainless steel blades.



Paring knife
20x3x2 cm
6709-1 ●



Santoku knife
31x5x2 cm
6708-1 ●



Chef's knife
34x4x2 cm
6707-1 ●



Bread knife
34x4x2 cm
6705-1 ●



Carving knife
34x4x2 cm
6706-1 ●



Honing steel
32x3,5x2,5 cm
7350-1 ●



Cutting board
25x15 cm
25x15x0,6 cm
13291 ○



Cutting board
30x20,5 cm
30x20,5x0,6 cm
13591 ○



Cutting board
35x25 cm
35x25x0,6 cm
13391 ○



Cutting board
45x28,5 cm
45x28,5x0,8 cm
13491 ○



Knife sharpener
16,5x6x6 cm
7351 ●

An easy-to-use ceramic roll sharpener and diamond stone for dull knives and scissors.

GRATERS

The foldable grater opens out and locks in place for safe grating. The two sides snap apart, each side can be used separately to grate flat over a bowl.



Foldable grater
12x4x25 cm
914400-1 ●



Rotary grater
30x23x9,5 cm
6685 ○



Zester grater
33,5x3,5x2,5 cm
6691 ●

Excellent for parmesan and other hard cheeses, 1,5 dl container.



Mini grater with container
15x7x4 cm
912200 ●

Wire-strengthened model.



Box grater
21,5x12x9,5 cm
911950 ○



Paddle grater
25,5x6x1,5 cm
7036-1 ●



Locks open for grating, folds flat for compact storage.



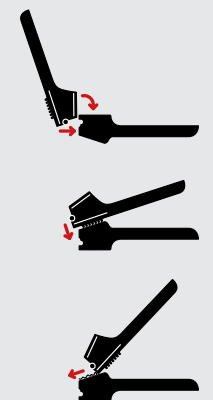
This grater is ideal for hard cheeses. Its blade grates in both directions, making it twice as efficient as a regular grater. The container neatly collects grated ingredients.



Grater with container
16,5x12,5x6,5 cm
796900 ●

GARLIC PRESS

The innovative garlic press separates into two pieces for easy cleaning. It easily minces both peeled and unpeeled garlic cloves.



Separates into two pieces for easy cleaning

Garlic press
17x4,5x4,5 cm
6903-1 ●



PEELERS & SLICERS

Vegetarian food is in demand. GastroMax™ peelers and slicers with their extra sharp stainless steel blades make easy work of preparing vegetables.



The razor-sharp swivel blade easily peels e.g. tomato, kiwi or asparagus.

Peeler
18x2,5x2,5 cm
7401-1 ●



A swivel blade follows the contour of vegetables and fruits.

Peeler
16x2,5x1,5 cm
6034-1 ●



Mushroom knife
19,5x2x1,5 cm
6756 ●



Spiral cutter
14x7x7 cm
6756 ○



Y-Peeler
14,5x8x1,5 cm
6901-1 ●



Mandoline slicer
30x12x4,5 cm
6695 ●

Two blades for coarse or fine texture.



Onion chopper
12,5x12,5x9,5 cm
6201 ○



Potato/vegetable ricer
33,5x11,5x10 cm
6601 ○



Apple slicer
19,5x13,5x4,5 cm
6755 ○



Egg slicer/wedger
14,5x10x4 cm
6088-1 ●



Egg slicer
12,5x10x2,5 cm
6087-1 ●



OTHER UTENSILS



Funnel ø 13 cm
13x15,5x13 cm
15910 ○

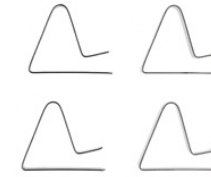


Table cloth clip 4 pcs
5x4,5x1 cm
913860 ○



Tea ball infuser
15x4,5x3,5 cm
2339 ●



Nutcracker
15,5x3,5x1,5 cm
2334 ●



**Ceramic
hob scraper**
13,5x5x2 cm
2371 ●



**Blades for ceramic
hob scraper**
4,5x2,5x0,1 cm
2471 ●



Cuts both paper
and fabric, soft
grip handles.

Scissors
23,5x8,5x1 cm
6340-1 ●



Scissors
18x6,5x1 cm
6341-1 ●



**Roasting
pan 5 L**
27,5x37,5x7 cm
6750 ○



Testing skewer
14,5x2x0,5 cm
6131-1 ●



Patterned
surface ensures
easy release of
a scoop.

Ice cream scoop
18x4,5x3 cm
6541-1 ●



Can opener
19x5,5x5 cm
2337 ●



**Corkscrew
with wings**
17x6,5x3,5 cm
2336 ●



Waiter's friend
12x2,5x1,5 cm
2343 ●



**Splatter screen
ø 29 cm**
46x29x0,5 cm
2347 ○



Micro cover
25x26x8 cm
23191 ○



Strainer ø 8 cm
18,5x8x4 cm
56208-1 ●



Strainer ø 19 cm
35x19,5x8,5 cm
56219-1 ●



Strainer ø 15 cm
31x15x6,5 cm
56215-1 ●



Sauce strainer
31x15x9,5 cm
56315-1 ●



Colander
31,5x25x14,5 cm
56224-2 ○



Colander
40x24x13 cm
1295110 ○

Footed base for stability and keeping contents clear of countertops. Sturdy handle has a hole for hanging.

TIMERS & THERMOMETERS



Meat thermometer
7,5x12x7,5 cm
6751 ●

Optimal temperature zones marked for various types of meat.



Meat thermometer/timer
8x8x1,5 cm
6692-1 ●

Counts down and up 59 min 59 sec. Meat thermometer can be set to max 250°C.



Kitchen timer
8x8x1,5 cm
6669-1 ●

Counts down and up 59 min 59 sec. Foldable stand and magnet on the back.



Digital meat thermometer
28x2,7x0,5 cm
6697-1 ●

CUTLERY TRAYS AND DRAINERS

Cutlery trays and drainers are kitchen essentials. The GastroMax™ cutlery trays keep cutlery and utensils organized and quickly accessible in the kitchen drawer. We offer several models to fit a variety of drawer sizes and storage needs.



Torka cutlery drainer
11x11x11,5 cm
1216010 ○ 1216150 ●



Cutlery tray small
33x23x5 cm
22110 ○ 22164 ●



Cutlery tray large
41x31x5 cm
22010 ○ 22064 ●



Cutlery drainer round
13x13x11 cm
22310 ○ 22364 ●

With compartments to easily sort cutlery whilst drying.



Plastic drainers and trays are dishwasher proof and easy to clean.

GastroMax™
by orthex™



BAKING

Everyone loves baking or at least eating buns, pies and cakes. Practical tools make baking a pleasure. Add good ingredients and a pinch of love, and you have a recipe of success.



The tinplate baking pans are a great option for those wishing to avoid non-stick coatings.



Tinplate bundt pan 1,5 L
22,5x22,5x12 cm
6788 ●



Tinplate springform pan 3 L
27,5x28x6,5 cm
6787 ●



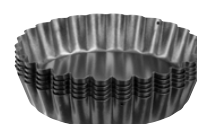
Tinplate loaf pan 1,7 L
12x31x7,5 cm
6789 ●

BAKING PANS

The non-stick baking pans are made of carbon steel and have two layers of non-stick coating for easy cake release.



Muffin pan 12 cup
34x26x3 cm
8505, ø 7 cm ●



Tartlet pan 4 pcs ø 10 cm
10x10x2,5 cm
8520 ●



Roasting pan 2 pcs
36,5x25x5,5 cm
8540 ●



Springform pan 2 bases 2,2 L
24,5x24,5x8,5 cm
8512 ●



Springform pan heart 2,1 L
22,5x21x7 cm
8518 ●



Springform pan ø 11,5 cm
12x12x4,5 cm
8523 ●



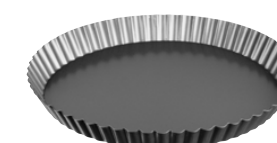
Bun pan 1,8 L
22,5x22,5x11,5 cm
8503 ●



Loaf pan 1,3 L
29x12x7 cm
8509 ●



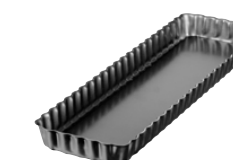
Loaf pan 1,7 L
33x13x6,5 cm
8510 ●



Springform pie pan ø 28 cm
28x28x3 cm
8519 ●



Springform pan 2,2 L
24x24x7 cm
8511 ●



Quiche pan with removable base
2,7x11x36 cm
8545 ●

BAKING UTENSILS



Silicone brush
25x4,5x1,5 cm
6937-1 ●



Silicone spoon spatula
27,5x6x1,5 cm
6945-1 ●



Silicone icing spatula
25x3x1 cm
6944-1 ●



Silicone spatula
27,5x6x1,5 cm
6924-1 ●



Nut and cheese grinder
22x8,5x6 cm
6361 ●



Brush
19x4x0,5 cm
6521-1 ●

100%
natural
fibre
bristles



Pastry brush 2 pcs
15,5x3,5x0,5 cm
2150 ●



Measuring cup set 4 pcs
12x6,5x4 cm
2373 ●



Dough scraper
13,5x8,5x1,5 cm
6075-1 ●

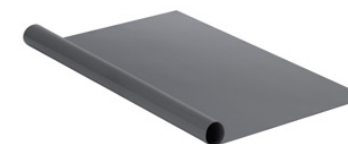
Plastic lined washable piping bag is easy to use and clean.
Set includes 3 nozzles.



Piping set
19x11x4 cm
6603 ○



Piping set
11x10x4 cm
2344 ○



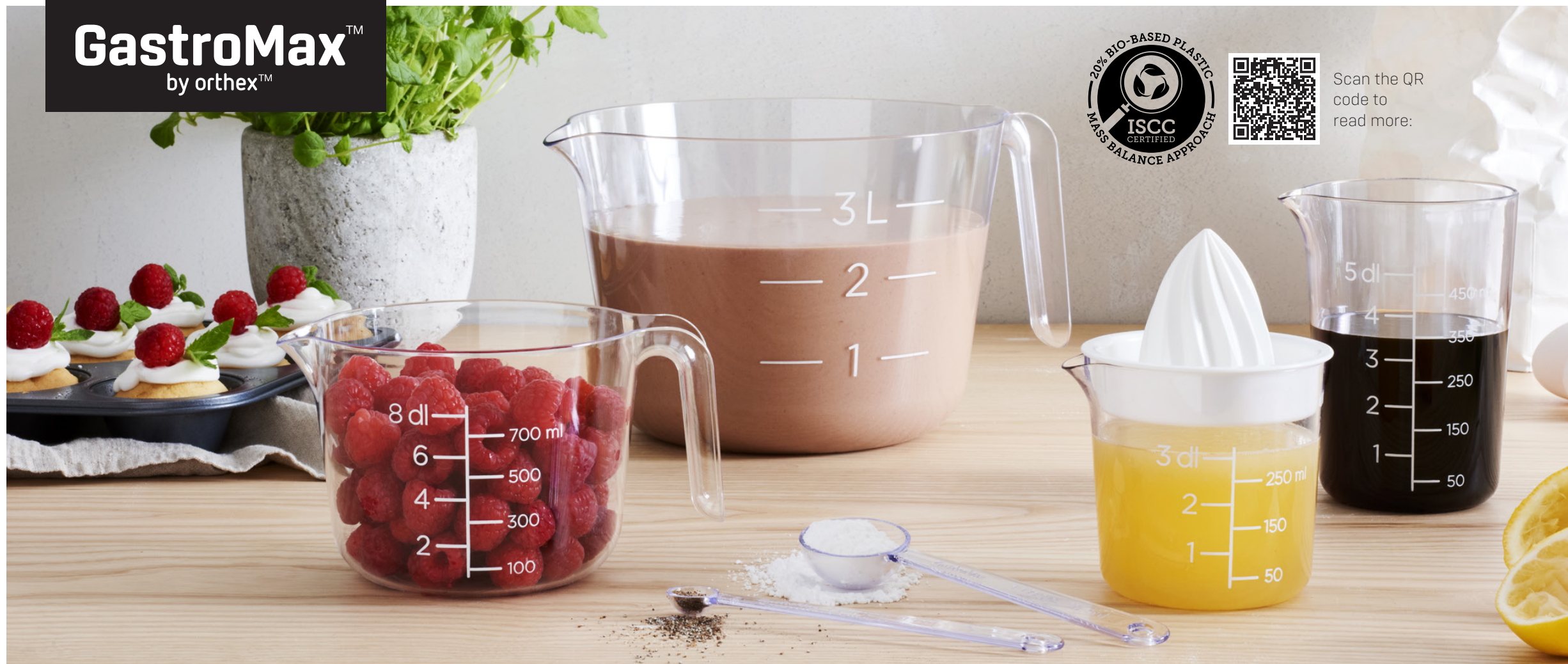
Silicone baking mat
40x33x0,1 cm
6796 ●



Rolling pin
44x6,5x6,5 cm
2383 ●



Scan the QR
code to
read more:



MEASURING CUPS

This baking range offers transparency and clear volume markings for easy measuring. All the different size cups and bowls nest for compact storage.



Measuring cup 0,3 L
10,5x9,5x9,5 cm
6405-90



Citrus press 0,3 L
14,5x10,5x9,5 cm
6408-90



Can be used
with a hand
blender.

Measuring cup 0,5 L
13,5x10,5x9,5 cm
6406-90



Measuring cup 1 L
17,5x14,5x12,5 cm
6407-90

Long handles to easily scoop
from tall jars. The spoons
snap together and can easily
be taken apart for use.



Measuring spoon set 5 pcs
7x19x5 cm
6404-90



Mixing bowl 0,8 L
14x18x10,5 cm
6420-90



Mixing bowl 3 L
21,5x27x15,5 cm
6421-90



Mixing bowl 0,8 L
14x18x10,5 cm
6420-2



Mixing bowl 3 L
21,5x27x15,5 cm
6421-2

MIXING BOWLS



Mixing bowl 1,5 L
20x16x13 cm
7073110



Mixing bowl 3 L
24x24x17 cm
7075110



The mixing
bowls have
non-drip
spouts and
wide rims for
easy grip.

Mixing bowl 3 pcs
24x24x17 cm
7078110



Dough bowl 8 L
35x31x18 cm
7076110

COOKIE CUTTERS

The stainless steel cookie cutters have sharp edges that make it easy to cut out figures from cookie dough or bread.



Cutter X-mas tree
11x6x1,5 cm
939408-1

Cutter heart
7,5x7,5x1,5 cm
939301-1

Cutter snowman
6x11,3x1,5 cm
939468-1



Cutter house
7x7x1,5 cm
939450-1

Cutter star
8x8x1,5 cm
939302-1

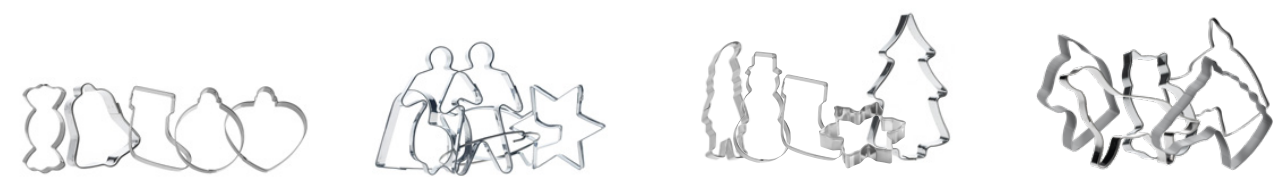
Cutter flower
8x8x1,5 cm
939304-1



Cutter Christmas ball
7,5x8x1,5 cm
939388-1

Cutter Christmas ball heart
9x9x1,5 cm
939389-1

Cutter candy
9x4,5x1,5 cm
939390-1

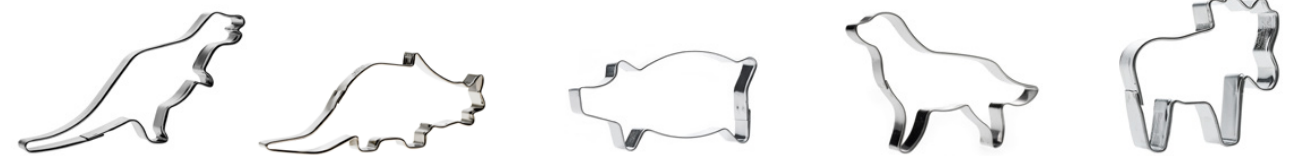


Cutter set X-mas deco 5 pcs
8 cm & 9 cm
939979

Cutter set traditional 5 pcs
8 & 11 cm
939851

Cutter set Christmas 5 pcs
8, 11 cm
939967

Cutter set animals 5 pcs
8, 11 cm
939977



Cutter t-rex
4,5x11,5x1,5 cm
939420-1

Cutter dino
4,5x11x1,5 cm
939421-1

Cutter pig
5x10,5x1,5 cm
939407-1

Cutter dog
8x11x1,5 cm
939427-1

Cutter moose
8x8,5x1,5 cm
939440-1



Cutter horse head
11x9,9x1,6 cm
939478-1

Cutter cat head
11x7,8x1,5 cm
939477-1

Cutter dog head
11x10,5x1,6 cm
939476-1

Cutter horse
9,5x8x1,5 cm
939410-1

Cutter cat
8,5x6x1,5 cm
939327-1

Cutter rabbit
10x5,5x1,5 cm
939433-1



Cutter Christmas stocking
8x9x1,5 cm
939469-1

Cutter snowflake
9x9x1,5 cm
939387-1

Cutter angel
6,5x10x1,5 cm
939424-1

Cutter woman
10,5x7x1,5 cm
939406-1

Cutter man
11x7x1,5 cm
939405-1

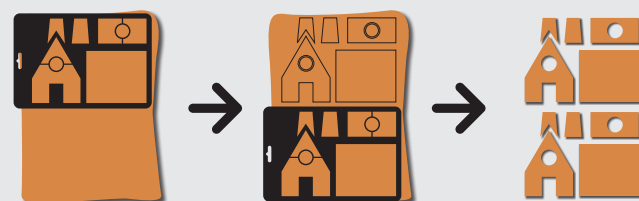
Cutter Christmas gnome
6x11,5x1,5 cm
939473-1



All the cutters are dishwasher proof.



The 3D cookie cutters make it easy to build a gingerbread village! With just two cuts from the dough, you will get all the parts for a complete house or four Christmas trees.



Cutter gingerbread house
28,5x19,5x1,5 cm
939870



Cutter Christmas trees
28,5x19,5x1,5 cm
939952-1

TABLEWARE

Practical and elegant plastic is lightweight, hygienic and robust and therefore an excellent material for picnics, barbeques, camping and eating outdoors.

BIO-BASED TABLEWARE

Bio-based tableware is made with plastic from plants.



Fits in the fridge door.
Depending on the direction
the lid is put on, it is either
open or closed.

Pitcher BIO 2 L
22x11x24 cm
156770 ● 156775 ●



**Coffee mug
BIO 0,3 L**
8x11x10 cm
155770 ● 155775 ●



**Drinking glass
BIO 0,4 L**
9x9x10 cm
154770 ● 154775 ●



**Plate BIO
ø 23,5 cm**
23,5x23,5x5 cm
157770 ● 157775 ●



**Plate BIO
ø 17,5 cm**
17,5x17,5x3 cm
144770 ● 144775 ●



Mug BIO 0,3 L
8x10x9 cm
163770 ● 163775 ●



**Plate, deep
BIO ø 19,5 cm**
19,5x19,5x5 cm
188770 ● 188775 ●



**Plate, deep
BIO ø 22 cm**
22x22x3,5 cm
167770 ● 167775 ●



**Plate
BIO ø 25 cm**
25x25x2 cm
166770 ● 166775 ●



Bowl BIO 0,4 L
13x13x6 cm
164770 ● 164775 ●



Bowl BIO 0,75 L
15x15x8 cm
174770 ● 174775 ●



Bowl BIO 3,5 L
25x25x11 cm
158770 ● 158775 ●



Bowl BIO 7 L
32x32x14 cm
168770 ● 168775 ●



CLASSIC TABLEWARE

GastroMax tableware is designed for long-term use and made from recyclable material to provide a sustainable alternative for single-use plastic.



Fits in the fridge door.
Depending on the direction
the lid is put on, it is either
open or closed.

Pitcher 2 L
22x11x24 cm
15691 ○



Bowl 3,5 L
25x25x11 cm
15891 ○



Bowl 7 L
32x32x14 cm
16891 ○



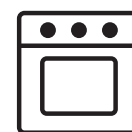
Cake cover portable
33x37x16 cm
26210 ○

OUR PRODUCT SYMBOLS

Use and care instructions are clearly communicated with symbols in the product packages.



Safe for food contact



Ovenproof



Made in Finland



Microwave proof

**+230°
-40°**

Maximum and minimum use
temperature



Type of plastic, important
information for recycling



Dishwasher proof



Handwash recommended



Freezer proof

**MAX
+230°
<1 min**

Maximum use temperature
with time restriction

**MAX
+100°**

Maximum use temperature



May not be used as a trivet



Bio-based content of product certified

★	= 20-40 % biobased
★★	= 40-60 % biobased
★★★	= 60-80 % biobased
★★★★	= more than 80 % biobased

IN-STORE SOLUTIONS

We offer inspiring material for stores to boost sales. We have planograms optimized for different size and type stores, floor and counter displays and a range of POS materials to give both information and inspiration to shoppers.



MAXIMISE YOUR KITCHEN SALES WITH OPTIMISED SOLUTIONS

On average, the consumer only sees a fraction of the total assortment, and only visits a small part of the store area. Most of their shopping time is spent searching for items, and many leave the aisles without making a purchase.

Unlock the full potential of your kitchenware section with our optimised assortment, customised planograms, and carefully designed POS materials. These solutions ensure that your products are easily accessible and appealing, turning browsers into buyers and boosting your sales.



Boost sales and enhance the shopping experience with well organized shelves.



DISPLAYS

Our versatile floor and counter displays are designed to boost sales even in limited spaces. With a variety of eye-catching designs, our displays are sure to inspire and engage shoppers, enhancing their in-store experience.



Maximize sales with our ready-to-sell displays



PROMOTIONS & POS MATERIALS

Our point-of-sale materials are designed to enhance the shopping experience. The materials provide valuable information and creative inspiration, helping to drive sales and customer engagement.



Sidebanner

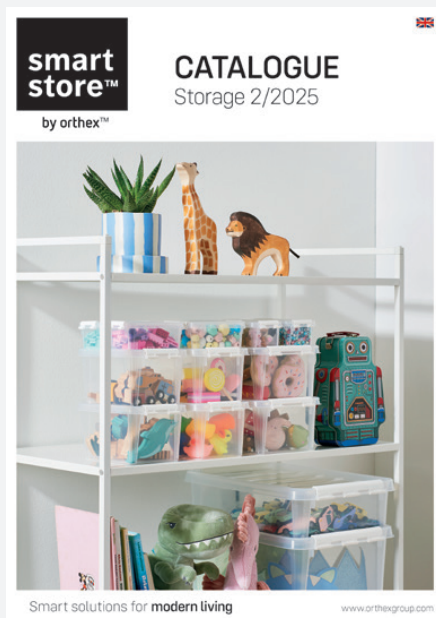


We offer top signs for different shelf sizes and with or without LED lighting.



Topsigns

ALSO CHECK OUT OUR OTHER CATALOGUES.



Orthex at your service

Orthex Group is the leading Nordic designer, manufacturer and marketer of household products. We have a mission to make everyday life a little easier and more enjoyable. Our well-known brands are Orthex™, SmartStore™ and GastroMax™

www.orthexgroup.com



www.facebook.com/orthexgroup



[@orthexgroup](https://www.instagram.com/orthexgroup)



www.pinterest.com/orthexgroup



www.youtube.com/orthexgroup

Practical is beautiful

Oy Orthex Finland Ab

Suomalaistentie 7,
02270 Espoo, Finland
Tel. +358 (0)19 329 61

Orthex Sweden AB

Box 6, SE-362 21,
Tingsryd, Sweden
Tel. +46 (0)477 450 00

Orthex Norway AS

Østre Aker vei 19,
NO-0581 Oslo, Norway
Tel. +47 23 17 04 00

Orthex Denmark A/S

Amager Strandvej 60-64,
DK 2300 Copenhagen, Denmark
Tel. +45 46 38 09 10

Orthex Germany GmbH

Hofkamp 100, 42103
Wuppertal, Germany
Tel. +49 (0) 202 527 07 380

UK & Ireland

Tel : +44 (0) 7920 236548
craig.sammells@orthexgroup.com

France

Tel. +33 (0)6 22 97 51 25
aurelien.chabannier@orthexgroup.com

Benelux

Tel. +31 (0) 613691607
bart.zonneveld@orthexgroup.com

orthex
GROUP