



Wooden trays - With your design

Est. 1996

Assortment 2023





handmade in Sweden

Formpress is a family business on the island of Öland, situated to the East of the Swedish mainland. Formpress was founded in the Fall of 1996 and the first tray was produced in the following spring, trays remain the core of our business. Throughout the years the products have become more varied and our birch-veneered trays have appeared in an increasing number of variations. The range has been widened to include products such as coasters, sandwich trays, trivets and serving boards etc.

All of our products are handmade, one by one, crafted in birch veneer harvested from sustainable forests within the Baltic Sea Region. This means that every product that leaves our factory is unique. In short, it is true craftsmanship.

In 2016 we updated and expanded our small factory and today have the privilege to work in new, up-to-date 4500m² facilities. As we were getting cramped this was necessary in order to develop as positively as we have in the past. Formpress today employs about 40 people.

Our ability to utilize the know-how that helped found Formpress is just as important to us as investing in new knowledge and the dedication that each individual brings to the company. A growing focus on the international market also places new demands on us.

Our products are parts of the Interior basics globally and is neither sensitive to economic fluctuations or trends.

By delivering results that exceed expectations we are proud to have gained the confidence of some of the world's leading brands.



Index

Why choose a product made by Formpress	4
Rectangular, square and Vintage trays	5
Round trays and table stands	6
Oval, Octa and Special shaped products	7
Special shaped products and Plates	8
Platters, Ice Scrapers and Bag tags	9
Key-Rings, Magnets, Door hangers and Coasters	10
Mini trays, Packaging and Tray racks	11
Trivets 21cm, 25cm and 19cm cork trivet	12
Serving boards 30x20cm	13
Serving boards 40x17cm	14
Serving boards 40x30cm	15
Eco Non-Slip	16
News 2023	17
Suggestion for back print	18
Standard decor	19
The Process - a Tray is born	20
Formpress and the environment	21
Product overview	23-27



You are now one step closer to holding a Formpress Tray in your hands!

All our trays are handmade, one by one, produced with the finest veneer from birch wood in our factory on the isle of Öland. Every year our trays undergo extensive tests (EU) for Food Contact safety, formaldehyde, melamine, stain resistance, etc. We are proud to present an environmentally friendly, Swedish-made sustainable product. We do not use any solvents or water in our production, which means that our employees are not exposed to any harmful substances.

All our products are made with veneer from birch wood apart from serving boards and pot trivets which are made of MDF (compressed wood fibre material).

Why choose a tray made by Formpress?

- Manufacturing takes place on the Isle of Öland, Sweden
- All of our products are made by hand, one-by-one with birch veneer as core material.
- We are FSC®-certified C141649
- We are certified with ISO 9001, ISO 14001, ISO 28000 and SMETA members (4 pillar)
- All of our trays can be made with your own custom design
- We digitally print your designs using UV-Proof, water-based ink
- Flexibility in small and large quantity orders
- You can easily and quickly order and receive samples and sample collections.
- We deliver worldwide
- High quality
- All products are made using recyclable and sustainable materials
- Worn out trays are sorted as combustible waste
- No water is used in our production
- Food Contact Test EU (Talk to Sales contact for more information)
- Surface tested for oil, alcohol, tea, coffee, wine and more (stain proof)
- Tough trays, can withstand regular and industrial dishwashing in temperatures up to 95°C
- Sturdy and strong composition and construction, easy and comfortable to hold
- Light-weight, but can hold a heavy load
- Long-lasting quality ensures cost effectiveness
- All of our trays have rounded edges around the rim because:
 - a. It makes the product more comfortable to hold.
 - b. The protruding rounded edge acts like a bumper, protecting the lacquer and design from hits and bumps.
 - c. The rounded edges naturally divert directed high pressure water and takes less of an impact than a flat surface edge, making the product safe for high pressure dishwashing.

Rectangular tray

1001	27x13 cm
1002	27x20 cm
1004	32x15 cm
1005	33x21 cm
1006	36x28 cm
1008	40x30 cm
1010	43x22 cm
1011	43x33 cm
1012	46x34 cm
1013	48x37 cm
1014	53x32 cm
1015	60x45 cm



1002



1004



1011



1014



Square tray

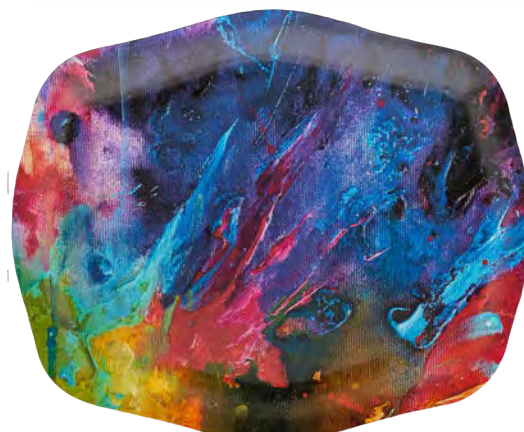
1017	32x32 cm
1053	20x20 cm (see page 17, News 2023)



1017

Vintage tray

1048	40,5x33,5 cm
------	--------------



1048

Round trays

1023	Ø31 cm
1024	Ø38 cm
1025	Ø39 cm
1026	Ø45 cm
1027	Ø46 cm
1028	Ø65 cm



1023



1024



1026



1028

Table stands

Our table stands are made out of steel and are available in black or white, designed for one or two trays. The table stands are foldable. If you order more than 50 pcs you can choose your own colour from the RAL-system.

Table stands for one tray

500000	B38 (black)
500001	B38 (white)
500002	B45 (black)
500003	B45 (white)
500004	B65 (black)
500005	B65 (white)

Table stands for two trays

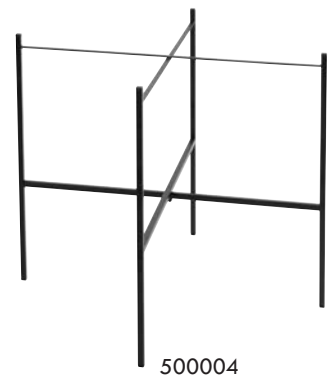
500006	B45/38 (black)
500007	B45/38 (white)
500008	B65/45 (black)
500009	B65/45 (white)



500000



500002



500004



500006



500008

Oval trays

1018	31x22 cm
1019	33x25 cm
1020	44x28 cm
1021	43x33 RH cm
1022	55x33 cm



1018



1019



1020



1021



1022

Octa shaped

1033	47x22 cm
1034	50x22 cm



1033



1034

Special shaped products



Bowl, straight

1038	35x35 cm
------	----------



Plattityden

1036	43x23 cm
------	----------

Special shaped products



Streamline rectangular

1050 45x31,5 cm

Straight cut



Streamline concave

1051 43x31,5 cm

Straight cut



Streamline with two handles oval

1044 Ø38 cm

Straight cut



Streamline square/round

1045 38x38 cm

Straight cut



Streamline Flora, flower shaped

1046 Ø38 cm

Straight cut

Plates



Square plate

1029 15x15 cm

1030 23x23 cm

1031 28x28 cm



Plate

1032 Ø31 cm

Sandwich platters



Sandwich platter. Birch veneer

3003 18x12 cm

3026 22x15 cm

Ice scrapers



Ice scraper. Birch veneer

3002 12x10 cm

Bag tags



3013



3015



Bag tag. Birch veneer

Two sides printed. Write name and address with permanent ink. Different models.

Ask for further information.

3013 9x6 cm

3015 9x6 cm

Packed in cellophane bag with a metal wire

Key-rings

Key-rings, different shapes

Birch veneer

3017 Round 5 cm

3018 Triangle 5 cm

3019 Heart 5,5 cm

Packed in a cellophane bag with a metal ring



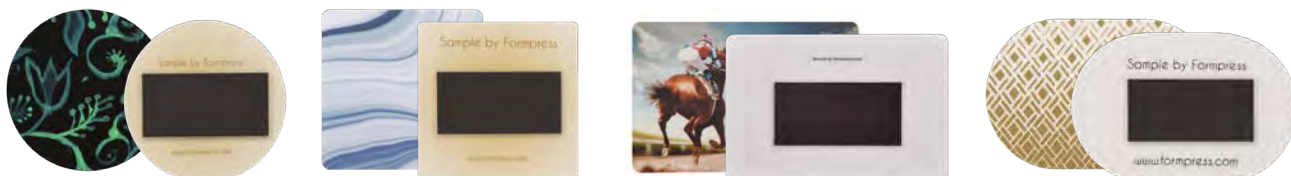
Magnets

Magnets, different shapes

Birch veneer

3022	Round	6,5x6,5 cm
3023	Square	6,5x6,5 cm
3024	Rectangular	9x6 cm (as image)
3025	Oval	9x6 cm

Packed in a cellophane bag



Door Hangers



Door hangers, two models

Birch veneer

3034	Round	20x8 cm
3035	Hook	20x8 cm



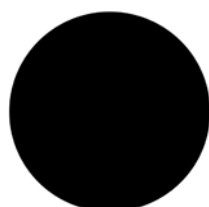
Coasters

9x9 cm

Birch veneer

Various shapes

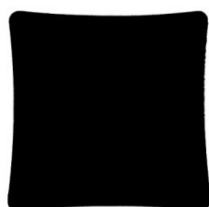
Can be packed in cellophane 4-pack or in a white cardboard box 4- or 6-pack.



3008



3009



3010



3011



3012

Coasters/Mini tray

1047 Round

1052 Flower shaped "Flora"

Small trayish coaster measuring Ø11 cm

Birch veneer

Various use

Can be packed in cellophane 4-pack or in a white cardboard box.



Packaging

For most of our smaller products we can offer packaging in cellophane bags. Different sizes. Please ask us for further information.

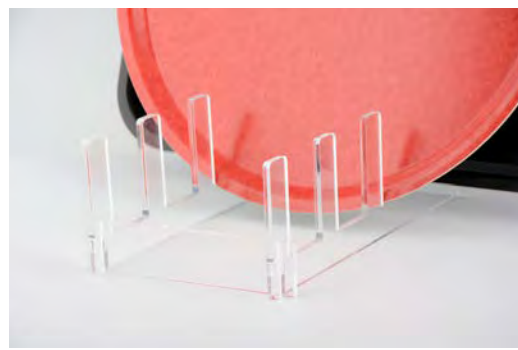


As an option we can offer white cardboard boxes with a round window displaying the design. 4- or 6-pack.

Tray rack

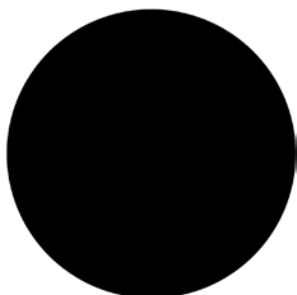
500014

Made in Plexiglas, perfect for display



Trivets 21 cm and 25 cm

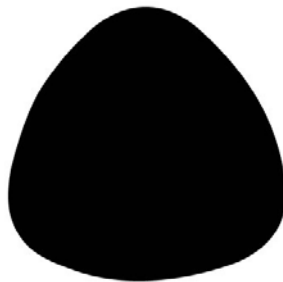
Our trivets are made of MDF
Heat resistant up to 130°C
Hand wash only



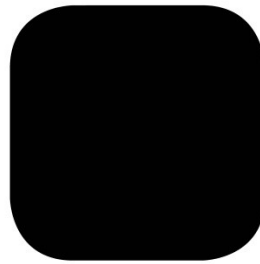
5001 21 cm Natural
5011 25 cm Natural



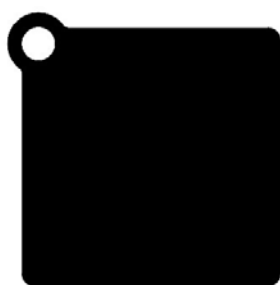
5002 21 cm Natural
5012 25 cm Natural



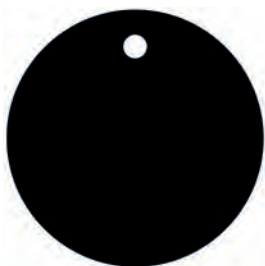
5003 21 cm Natural
5013 25 cm Natural



5004 21 cm Natural
5014 25 cm Natural



5064 21 cm Natural
5066 25 cm Natural



5112 21 cm Natural
5101 25 cm Natural



5113 21 cm Natural
5102 25 cm Natural

3036

Cork trivet with your design infolded, printed on
a 4 mm MDF. 12 mm thick and 19x19 cm all over.
Hand wash only.





Serving boards 30x20 cm

Our serving boards are made of MDF
Heat resistant up to 130°C
Hand wash only



5022 Natural



5024 Natural



5026 Natural



5036 Natural



5037 Natural



5121 Natural



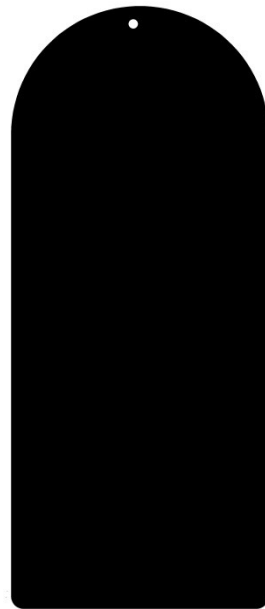
5122 Natural



5123 Natural

Serving boards 40x17 cm

Our serving boards are made of MDF
Heat resistant up to 130°C
Hand wash only



5038 Natural



5040 Natural



5050 Natural



5053 Natural



5054 Natural



5065 Natural



5130 Natural



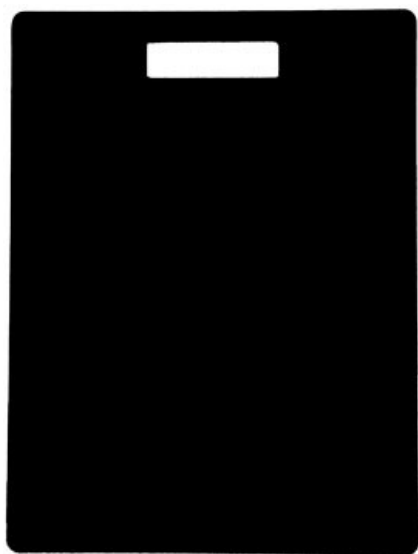
5131 Natural



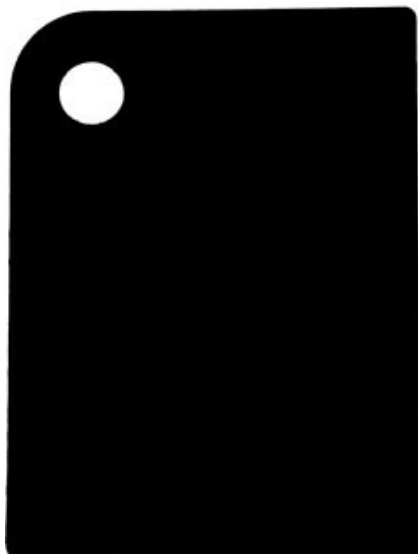
5133 Natural

Serving boards 40x30 cm

Our serving boards are made of MDF
Heat resistant up to 130°C
Hand wash only



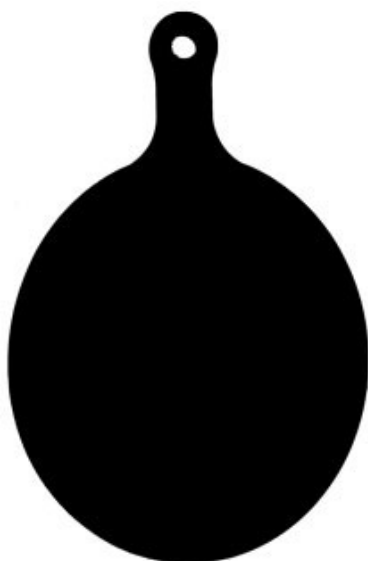
5055 Natural



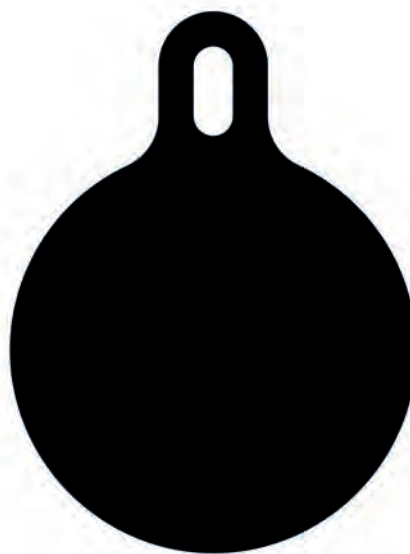
5058 Natural



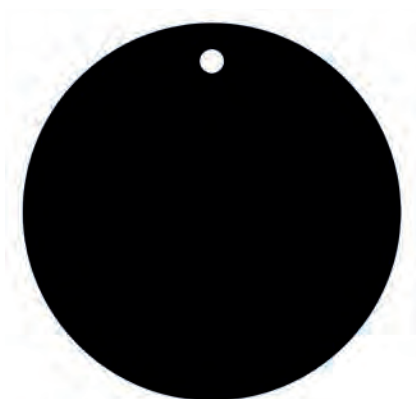
5059 Natural



5062 Natural



5141 Natural



5150 Natural



5151 Natural

Eco Non-Slip

If you are looking for a durable, dishwasher-safe, Eco-friendly and long-lasting tray with a non-slip surface on part of the front with the rest of the front surface still customizable including a customizable back print, our partly cork covered Eco Non-Slip trays may be what you are looking for.

These trays, just like all other trays we make are made using the finest birch veneer, we are very picky with our materials. Our suppliers know this because they are chosen based on the high quality of the materials they are able to provide.

We have been working on supplying a non-slip solution to our customers for a long time. Along the way we have encountered issues with materials being too non-friendly to the environment or bad smudge-resistance. Finally we have found a solution in natural cork material!

We are now able to offer full cork or partly cork on the front of trays depending on your need and preference.



Eco Non-Slip Partly Cork

Eco Non-Slip Partly Cork Is available in four different models, all of which has been optimized for use in restaurants and bars.

- Choose between four standard sizes 53x32, 43x33, 36x28 and 32x15 cm
- The glass is held in place on the partly cork-covered surface while the rest of the front surface is customizable with your own design
- Sampling is quick and easy
- We are able to ship custom samples from factory within one week, regular orders are shipped within 5-6 weeks
- Industrial dishwasher safe
- Made from the finest birch veneer
- Sturdy and strong construction
- Stains should be removed immediately
- Due to the natural material used in this product, material discolouration may occur over time
- Not food contact tested



NEWS 2023

We have some very good news for you!

During spring we will be able to provide you a new size of the square tray and also laminated placemats that fits into every home.



Square Tray

Like the rest of the trays the new square tray is made out of birch veneer.

1053 20x20 cm

Laminated placemat

The laminated placemat is made out of PET plastic, with your design.

8900 40x30 cm



For more information regarding the new products, please contact us and we will tell you everything you need to know!



Suggestions for printing on the back

Here are four suggestions that might give you a hint on how the back of the tray could look like.

The birch décor or just a white background is the most common choice.

We would very much like to be mentioned in some way on our products.

The back is a perfect canvas for storytelling.

100% ink coverage is not recommended. Using too much ink on the back can affect the price and the dishwashing durability of trays.

We are FSC®-certified.

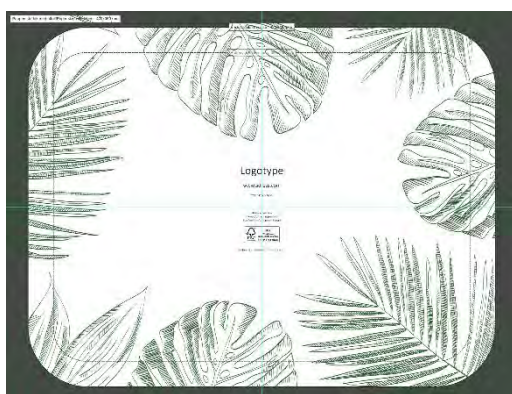
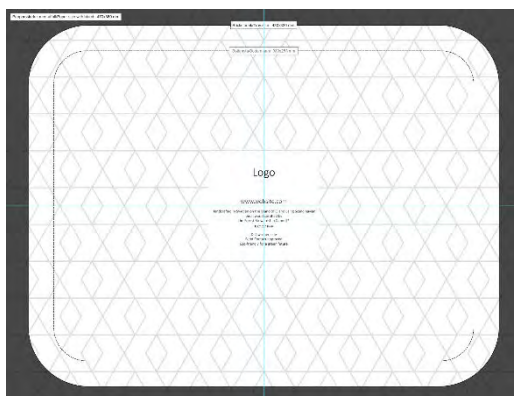


Don't hesitate to ask us if you have any questions.

Logotype
www.website.com

Handcrafted in Sweden by formpress.com
Made by the finest birch veneer

Dishwasher safe
Food Contact approved
Eco-friendly for a green future



Standard decors

Several different wooden decors are available as standards on our trays.



Birch



Mahogany



Oak



Walnut



White



Black



Granite grey



Cork

The Process - a tray is born



A good relationship between us and the customer is the most important thing and all our cases are handled with detail and care.

We want you as a customer to feel that you are a part of the Formpress family!

All our products are handmade, one by one. A tray is built up with several layers of thin birch veneer pressed together with the customers art-work for around 8 minutes in $+120^{\circ}\text{C}$ with several tonnes of pressure.



Every tray is milled one by one to make our signum – the round edges. The round edges makes the tray more comfortable to hold. The protruding rounded edge acts like a bumper, protecting the lacquer and design from hits and bumps and naturally divert directed high pressure water and takes less of an impact than a flat surface edge, making the product safe for high pressure dishwashing.

After a quality check the trays are ready to be sent out to customers all around the world.

Every year approximately 1 000 000 products are shipped from our factory here on the island of Öland in Sweden.



Our quality work takes us in to the future

We are proud to announce that we ended the year of 2021 with a successful certification process for the international standard ISO 9001 for Quality management systems.

Our business is based on close and long-term relationships with customers, employees, suppliers and other business partners. We strive to be perceived as a trustworthy, long-term and reliable partner in business. We attach great value to acting professionally, honestly and ethically correct. We support the UN Global Compact; ILO's core conventions and our code of conduct is based on these principles.

We strive to be an attractive employer where employees can develop. We only offer regular employments, that apply with applicable laws and collective agreements. The terms of employment, must correspond to the minimum requirement in current Swedish legislation and collective agreements. We accept nothing else, then that the employees should be given equal opportunities and we are convinced that good results, well-being, commitment and collaboration are achieved through diversity.

Since February 2022, we have been audited for SMETA (4 pillar), a widely used social audit to assess sites according to working conditions in the supply chain, environment and business ethics. We are also members of Sedex.

To ensure our commitment to be a safe and resilient company, we have introduced the international standard ISO 28000, a security management system for the supply chain.

Our products - an environmentally friendly alternative

The future is everyone's responsibility and we do our best to leave a positive mark. That is why we are certified according to the international standard ISO 14001 that specifies requirements for an effective environmental management.

There are many ways to work for the environment and towards sustainability. At Formpress we focus on how to minimize our company's negative impact on the environment. We work to minimize our use of energy, water, chemicals and materials, minimize waste as well as making sure that whatever waste there is gets recycled in the best possible way. Neither water, chemicals nor solvents are used in our production. We do our best to minimize our transports of raw materials, by for example choosing suppliers in the near region.

The components of our products are; birch veneer or MDF, glue, varnish and, most of the time, decor and paper or fabric. We spend a lot of time on carefully sourcing our wood-based materials from ethical, responsible suppliers. Glue, varnish and decor consist of melamine-dipped paper and the melamine is an organic compound used to make our products durable. It is also the melamine that makes them water-resistant. The melamine is tightly bound in our products, something we ensure by having the trays undergo a Food Contact Test.

FSC®-certificate C141649

We are certified according to the FSC® standard.

FSC® stands for Forest Stewardship Council, an independent, international organization which works with a labelling system. This guarantees that a wood based product uses material from responsibly grown forests. It indicates a social and environmental responsibility for the forests of the world and the people and animals that work and live there. We do not add this stamp on our products by standard. To display the FSC®-stamp on the products you order, please let it be known to your contact person at Formpress.

For more information visit the FSC website: <https://se.fsc.org/se-se>



Product overview

H = with hole

Rectangular trays

<u>Size</u>	<u>Item number</u>	<u>Size of original</u>
27x13 cm	1001	30x16 cm
27x20 cm	1002	30x23 cm
32x15 cm	1004	35x18 cm
33x21 cm	1005	36,5x25 cm
36x28 cm	1006	40x31 cm
40x30 cm	1008	44x34 cm
43x22 cm	1010	47x25 cm
43x33 cm	1011	47x36 cm
46x34 cm	1012	49x37 cm
48x37 cm	1013	52x41 cm
53x32 cm	1014	55,5x35,5 cm
60x45 cm	1015	64x48 cm

Square tray

<u>Size</u>	<u>Item number</u>	<u>Size of original</u>
20x20 cm	1053	23x23 cm
32x32 cm	1017	36x36 cm

Vintage tray

<u>Size</u>	<u>Item number</u>	<u>Size of original</u>
40x33 cm	1048	46,5x39 cm

Round trays

<u>Size</u>	<u>Item number</u>	<u>Size of original</u>
Ø 31 cm	1023	35x35 cm
Ø 38 cm	1024	42x42 cm
Ø 39 cm	1025	42x42 cm
Ø 45 cm	1026	49x49 cm
Ø 46 cm	1027	49x49 cm
Ø 65 cm	1028	69x69 cm

Oval trays

<u>Size</u>	<u>Item number</u>	<u>Size of original</u>
31x22 cm	1018	34x25 cm
33x25 cm	1019	36x29 cm
44x28 cm	1020	48x32 cm
55x33 cm	1022	59x36 cm
43x33 cm RH (rounded corners)	1021	47x36 cm

Octa shaped

<u>Size</u>	<u>Item number</u>	<u>Size of original</u>
47x22 cm	1033	53x25 cm
50x22 cm	1034	53x25 cm

H = with hole

Special shaped products

<u>Size</u>	<u>Item number</u>	<u>Size of original</u>
Plattityden 43x23 cm	1036	47x25 cm
Streamline rectangular 45x31,5 cm	1050	47x36 cm
Streamline concave 43x31,5 cm	1051	47x36 cm
Streamline square/round	1045	42x42 cm
Streamline, two handles oval Ø 38 cm	1044 H	42x42 cm
Streamline Flora, flower shaped Ø 38 cm	1046	42x42 cm

Plates

<u>Size</u>	<u>Item number</u>	<u>Size of original</u>
Square plate 15x15 cm	1029	19x19 cm
Square plate 23x23 cm	1030	27x27 cm
Square plate 28x28 cm	1031	32x32 cm
Plate Ø31 cm	1032	35x35 cm

Bowls

<u>Size</u>	<u>Item number</u>	<u>Size of original</u>
Bowl straight 35x35 cm	1038	42x42 cm

Sandwich platters

<u>Size</u>	<u>Item number</u>	<u>Size of original</u>
Sandwich platter 18x12 cm	3003	19x13 cm (59x41 cm)
Sandwich platter 22x15 cm	3026	23x16 cm (49x49 cm)

Ice Scrapers

<u>Size</u>	<u>Item number</u>	<u>Size of original</u>
Ice Scraper 12x10 cm	3002	13x11 cm (59x41 cm)

Bag tags

<u>Size</u>	<u>Item number</u>	<u>Size of original</u>
Bag tag 9x6 cm (wavey top)	3013 H	10x7 cm (52x44 cm)
Bag tag 9x6 cm (straight top)	3015 H	10x7 cm (52x44 cm)

Key-rings

<u>Size</u>	<u>Item number</u>	<u>Size of original</u>
Key-ring Ø5 cm round	3017 H	6x6 cm (52x42 cm)
Key-ring 5 cm triangle	3018 H	6x6 cm (52x42 cm)
Key-ring 5,5 cm heart	3019 H	7x7 cm (52x42 cm)

H = with hole

Magnets

Size	Item number	Size of original
Round Ø6,5 cm	3022	8x8 cm (52x42 cm)
Square 6,5x6,5 cm	3023	8x8 cm (52x42 cm)
Rectangular 9x6 cm	3024	10x7 cm (52x42 cm)
Oval 9x6 cm	3025	10x7 cm (52x42 cm)

Door Hangers

Size	Item number	Size of original
19x7 cm Round hole	3034	20x8 cm (52x42 cm)
19x7 cm hook	3035	20x8 cm (52x42 cm)

Coasters

Size	Item number	Size of original
Round Ø9 cm	3008	10x10 cm (52x42 cm)
Square 9 cm	3009	10x10 cm (52x42 cm)
Square/concave 9 cm	3010	10x10 cm (52x42 cm)
Square/ rounded corners 9 cm	3011	10x10 cm (52x42 cm)
Triangle 9 cm	3012	10x10 cm (52x42 cm)
Round mini tray Ø11 cm	1047	13x13 cm (53,2x53,2 cm)
Flora mini tray, flower shaped Ø11 cm	1052	13x13 cm (53,2x53,2 cm)

Trivets MDF Natural (thickness about 6 mm)

Size	Item number	Size of original
Trivet 21 cm	5001-5004, 5064 H, 5112 H, 5113 H	23x23 cm
Trivet 25 cm	5011-5014, 5066 H, 5101 H, 5102 H	26x26 cm

Trivet Cork/MDF (thickness about 12 mm)

Size	Item number	Size of original
Trivet 19 cm (printing area 15 cm)	3036	16x16 cm

H = with hole

Serving boards MDF Natural 30x20 cm (thickness about 6 mm)

Size	Item number	Size of original
29,5x19,5 cm	5022 H	31x21 cm
29,5x19,5 cm	5023	31x21 cm
29,5x19,5 cm	5024 H	31x21 cm
29,5x19,5 cm	5025	31x21 cm
30,0x20,0 cm	5026 H	31x21 cm
30,0x20,0 cm	5027	31x21 cm
30,0x20,0 cm	5028 H	31x21 cm
30,0x20,0 cm	5029	31x21 cm
30,0x20,0 cm	5030 H	31x21 cm
30,0x20,0 cm	5031	31x21 cm
30,0x20,0 cm	5032 H	31x21 cm
30,0x20,0 cm	5033	31x21 cm
30,0x20,0 cm	5034 H	31x21 cm
30,0x20,0 cm	5035	31x21 cm
30,0x20,0 cm	5036 H	31x21 cm
30,0x20,0 cm	5037 H	31x21 cm
30,0x20,0 cm	5121 H	31x21 cm
30,0x16,0 cm	5122 H	31x21 cm
30,0x20,0 cm	5123 H	31x21 cm

Serving boards MDF Natural 40x17 cm (thickness about 6 mm)

Size	Item number	Size of original
40x17 cm	5038 H	42x19 cm
40x17 cm	5039	42x19 cm
40x17 cm	5040 H	42x19 cm
40x17 cm	5041	42x19 cm
40x17 cm	5042 H	42x19 cm
40x17 cm	5043	42x19 cm
40x17 cm	5044 H	42x19 cm
40x17 cm	5045	42x19 cm
40x17 cm	5046 H	42x19 cm
40x17 cm	5047	42x19 cm
40x17 cm	5048 H	42x19 cm
40x17 cm	5049	42x19 cm
40x17 cm	5050 H	42x19 cm
40x17 cm	5051	42x19 cm
40x17 cm	5052	42x19 cm
40x17 cm	5053 H	42x19 cm
40x17 cm	5054 H	42x19 cm
40x17 cm	5065 H	42x19 cm
40x17 cm	5130 H	42x19 cm
40x17 cm	5131 H	42x19 cm
40x17 cm	5133 H	42x19 cm

H = with hole

Serving boards MDF Natural 40x30 cm (thickness about 6 mm)

Size	Item number	Size of original
35x25 cm	5021	37x27 cm
40x30 cm	5055 H	42x32 cm
40x30 cm	5056	42x32 cm
40x30 cm	5057	42x32 cm
40x30 cm	5058 H	42x32 cm
40x30 cm	5059 H	42x32 cm
40x30 cm	5060	42x32 cm
40x30 cm	5061	42x32 cm
40x26 cm	5062 H	42x32 cm
40x26 cm	5063	42x32 cm
40x26 cm	5141 H	42x32 cm
30x30 cm	5150 H	42x32 cm
30x30 cm	5151 H	42x32 cm

Laminated placemat 40x30 cm

Size	Item number	Size of original
40x30 cm	8900	42x32 cm

Formpress AB
Kraftvägen 10
386 32 Färjestaden
Sweden
+46 (0)485 65 06 80
info@formpress.com
formpress.com
[@formpresstrays](https://www.instagram.com/formpresstrays)

