



Egyptian Cotton Hub

Home Textiles



From Roots to Leadership

- Since the journey of Egypt's textile industry began in **1927** with the launch of **Misr Spinning and Weaving Company in El Mahalla El Kubra**, this sector has been one of the main pillars of the national economy, accompanying Egypt's industrial development with a rich legacy of creativity, production, and quality.
- Today, the Cotton and Textile Industries Holding Company continues this journey through a comprehensive plan to develop and enhance the efficiency of the industry. Under its umbrella, it includes **ten** subsidiary companies specialized in various stages of production, from spinning to weaving and ready-made garments, namely:



Misr Spinning & Weaving El Mahalla El Kubra



Damietta Spinning & Weaving



Dakahlia Spinning & Weaving (Detex)



Misr Helwan Spinning & Weaving



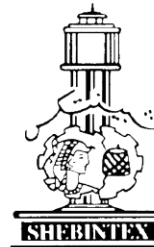
Misr for Artificial Silk & Polyester Fibers (Misr Rayon)



Upper Egypt Spinning & Weaving



Misr Fine Spinning & Weaving & Dyeing



Misr Shebin Elkom Spinning & Weaving (Shebintex)



Misr for Cotton Trading & Ginning



Egyptian Cotton Hub

Who Are We?

- **Egyptian Cotton Hub** is one of the companies under the Cotton and Textile Industries Holding Company. It was established with an ambitious vision to reintroduce Egyptian cotton to the world in a manner that reflects its renowned quality and rich heritage.
- Egyptian Cotton Hub works to maximize added value by developing sales and marketing channels and making optimal use of the production capacities of its sister companies through smart marketing solutions and strategic local and international partnerships.
- As the main marketing arm of the group, Egyptian Cotton Hub enables factories to access markets effectively and enhances their competitiveness through integrated planning, marketing, and product development.



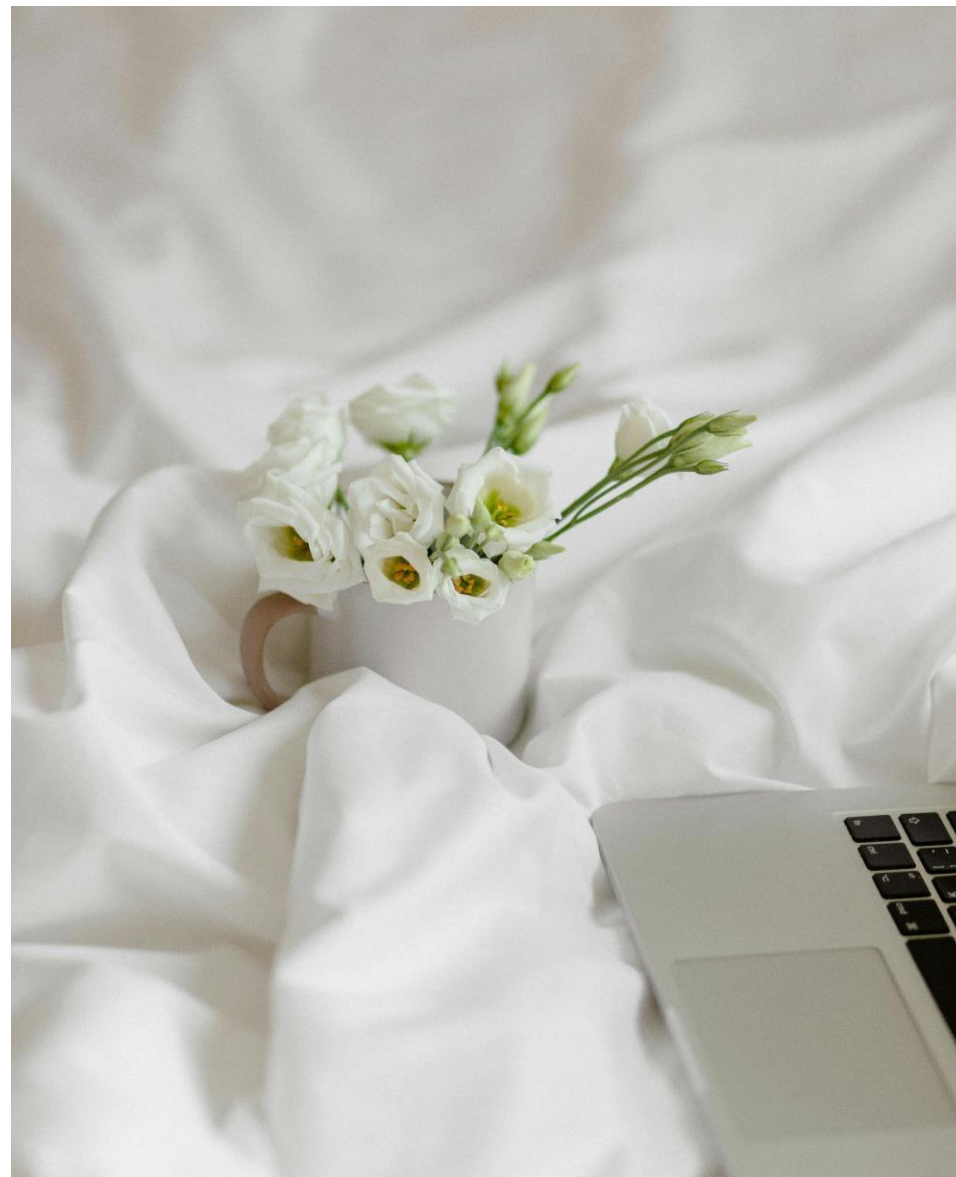
Home Textiles

We provide integrated solutions in the field of home textiles through high-quality products.

We focus on achieving a balance between distinctive design, consistent quality, and production efficiency, relying on carefully selected materials and advanced manufacturing lines.

We meet the needs of our partners in the retail, distribution, and wholesale supply sectors through flexible production, diverse specifications, and strict adherence to timelines.

We are a trusted partner for those seeking home textiles that combine quality, reliability, and market competitiveness.



Home Textiles Categories



BEDDING

- Material & Qualities
- Fabric Weave
- Thread Counts (TC's)
- Finishing and colours
- Items Standard sizes



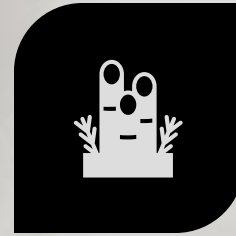
BATH TEXTILES

- Terry Cloth
- Long Loop Terry
- Waffle Weaves
- Yarn Dye
- Dobby
- Jacquard
- Mittens – cloves



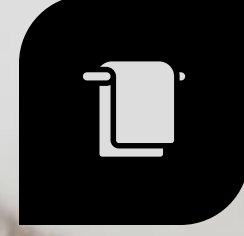
KITCHEN AND DINING

- Tablecloths
- Table runners
- Placemats
- Napkins
- Kitchen towels
- Aprons



DECORATIVE TEXTILES

- Bed Spreads
- Bed Skirts
- Blankets –flannel



UPHOLSTERY AND FURNISHING FABRICS

- Sofa covers
- Chair covers
- Slipcovers
- General upholstery Fabric

Bedding / Materials & Qualities

- **Branded Egyptian Cotton:** extra-long, fine fibers making it exceptionally soft, comfort, antipilling, more durable, breathable, and more absorbent. and it gets softer with washing.
- **Regular Cotton:** More affordable , less soft, less durable
- **Blended Cotton (like Cotton-Polyester):** less durable, wrinkle resistance, luster, less shrinking/fading, and faster drying at a lower cost..
- **Yarn Type and Ply:** Single yarns are generally considered higher quality and softer than multi-ply yarns (multiple strands twisted together), even if the multi-ply construction results in a higher thread count. Some manufacturers use multi-ply yarns to inflate the thread count.





Fabric Weave

- Sateen (smooth, luster and silky)
- Percale (crisp and breathable)
- Jacquard (weaved pattern)

Bedding - Fabric Weave - Percale

Percale Features

Weave 1/1

- Crisp, cool, and durable plain weave ideal for hot weather
- Affordable

TCs Examples:

- TC 150
- TC 200
- TC 250
- TC 290
- TC 300





Bedding - Fabric Weave - Sateen

Sateen Fabric Characteristics

- **Weaving Method:** Four threads interlaced over one thread, providing a smooth and soft surface.
- **Distinctive Sheen:** Features a beautiful shine that adds a luxurious touch.
- **Available Designs:** Comes in plain or striped patterns to suit different tastes.



Bedding - Fabric Weave - Sateen

TCs Examples:

- TC 200
- TC 250
- TC 300
- TC 350
- TC 400
- TC 500
- TC 600
- TC 800-1000

Bedding - Fabric Weave - Jacquard



Jacquard Features

- Pattern/ design weaved directly to the fabric
- luxurious look
- Customized fabric
- Won't fade
- Customized patterns / design

Example TC 400 -1000

Bedding Thread Counts

- **Standard Quality: TC 150 to TC 280 thread count** can offer good durability suitable for hospitals

Yarn count : 16-40 (single and twisted)

- **Luxury Quality: 300 to 600 thread count** considered the sweet spot for a soft and luxurious feel. suitable for hospitality

Available in sateen and Percale (stripe and solid)

Yarn count : 60-80 (single and twisted)

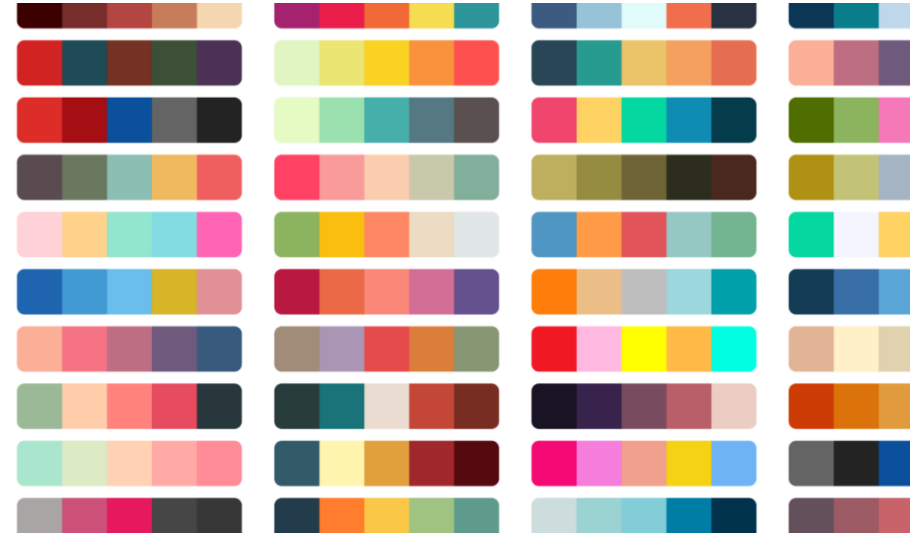
- **Above 600: Thread counts above 600** Extremely high thread counts (over 1000) are often achieved using multi-ply yarns. suitable for royal suites

Available in sateen

Yarn count : 80+ (single and twisted)

Bedding – Finishing and Colors

- **Bedsheet Finishes**
- Bedsheet finishes enhance the **look, feel, and performance** of the fabric. Common finishes include:
 - **Plain Finish:** Enhances appearance, feel, and maintains fabric performance
 - **Mercerized:** For added luster and improved dye uptake in cotton.
 - **Sanforized:** To prevent shrinkage during washing.
 - **Brushed:** Creates a soft, fuzzy feel similar to flannel.
 - **Sateen:** Smooth and silky surface with a gentle sheen.
 - **Percale:** Crisp, cool, and breathable finish.
 - **Anti-pilling:** Reduces fabric pilling for a smoother surface.
- **Print Options:**
 - All-over print
 - Digital print
 - Rotary print
- **Solid Colors:** Minimum order quantity of 1,000–1,500 meters per color.



Bedding – Items & Standard sizes

- Flat Sheets.
- Fitted Sheets.
- Duvet Covers
- Pillowcases





Bath Collection

Bath Textiles

- Towels (bath, hand, face, beach), Bathrobes, Bath Mats.

Material & Qualities

- Fabric Weave
- GSM
- Finishing & Colors
- Standard Sizes



Bath Textiles

Towels:

(Bath, Hand, Face, Beach)

Bathrobes

Bath Mats





Bath Collection / Materials & Qualities

Material:

- **100% certified Egyptian cotton Long-staple cotton**
 - is often preferred for softness and its richness and high absorbency
- **100% cotton** : commercial , affordable
- **Velour** : soft and has a velvet touch
- **Other factors:** Good pile height/density and double-stitched edges enhance quality and durability.

Bath Collection / Weave and features



- **Terry cloth** is common for absorbency.
- **Long Loop Terry**: Maximum Absorbency
- **Waffle weaves** are lighter and dry faster. Suitable for bidet towels and bath robes
- **Yarn Dye** : for pool / beach towels using anti chlorine dyes
- **Dobby** : plain towels
- **Jacquard** : customized designs / pattern

Bath Collection / Weight in GSM (gram per square meter)

- **Weight (GSM):** Higher GSM (380-900 for bath towels) usually means a thicker, more absorbent towel.
- **Other factors:** Good pile height/density and double-stitched edges enhance quality and durability.



Bath Collection /Finishing and Colores

- **Printing:** Modern digital printing for beach towels.
 - **Yarn Dyeing (YD):** Minimum order quantity of 500 kg per color.
 - **Indanthrene Dyeing:** Minimum order quantity of 400 kg per color.
 - **Reactive Solid Colors:** Minimum order quantity of 350 kg per color.
 - **Anti-pilling Treatment:** Prevents pilling to maintain fabric quality.
- Velour Fabric:** Soft with a luxurious, velvety feel.



Kitchen and Table Linens:

- Material & qualities
- Fabric weave
- Thread counts(Tc's)
- Finishing and colors Items Standard sizes .



Table Linens / Materials & Qualities

Material:

- **100% certified Egyptian cotton**
Long-staple cotton

is often preferred for softness and its richness and high absorbency

- **100% cotton** : commercial , affordable
- **Other factors:** finishing and twisted yarn

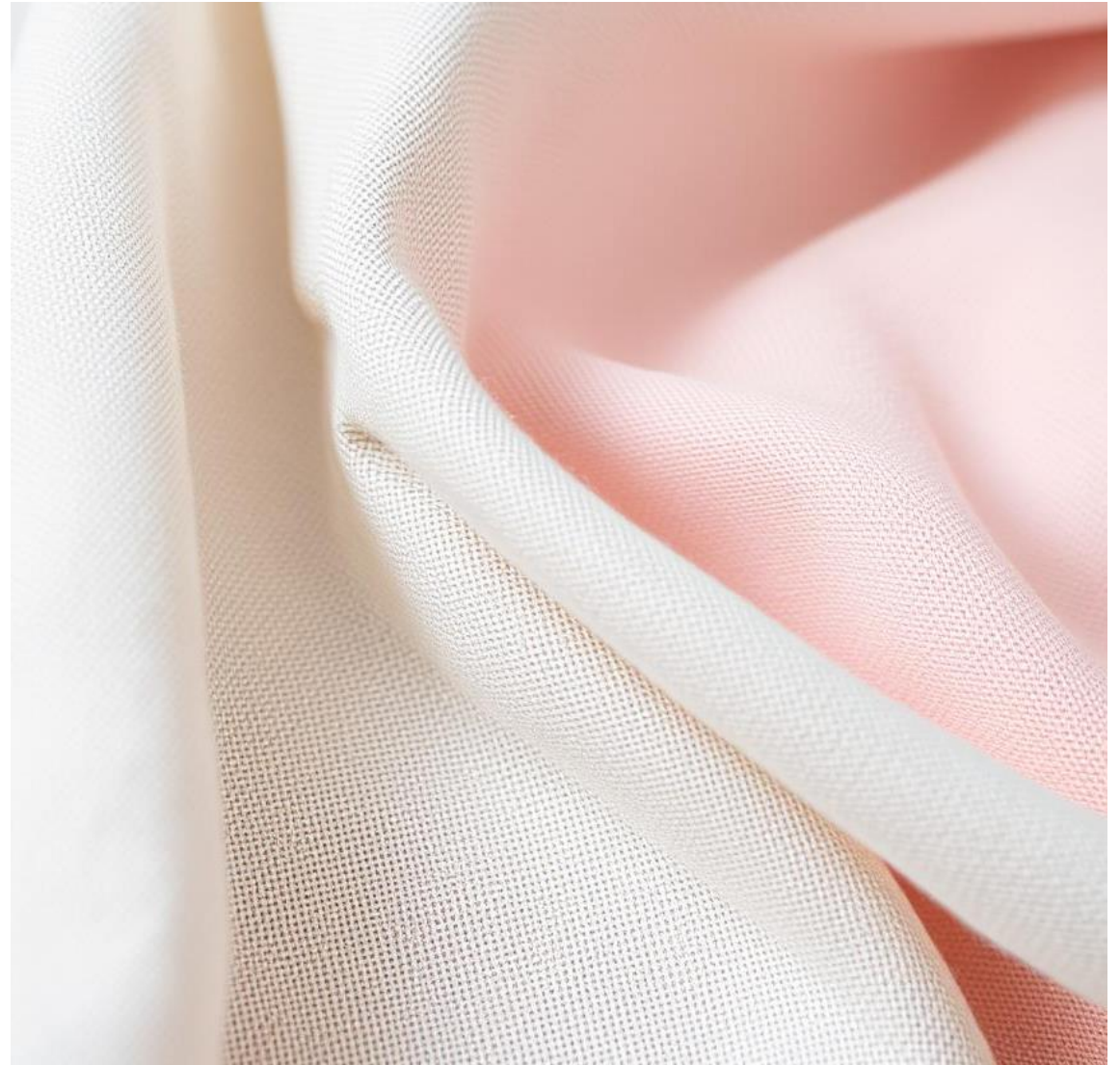


Table linen / Fabric weave

- **Plain Weave:** Ideal for daily use due to its durability and easy care.
- **Sateen:** Features a smooth surface with a silky sheen, suitable for special occasions.
- **Damask:** Offers an elegant, luxurious look, often used for table linens and upscale decor.
- **Jacquard:** Woven with intricate patterns, providing a unique texture and high durability.



Kitchen and Table Linens:

- Tablecloths
- Table runners
- Placemats Napkins
- Kitchen towels
- Aprons



Table Linens

Thread counts

Standard Quality: 200-600 thread count can offer good durability suitable for daily occasion

Yarn count : 16-40 (single and twisted) .

- **Luxury Quality:** 600 -1000 thread count considered the sweet spot for a soft and luxurious feel. suitable for hospitality

Yarn count : 60-80 (single and twisted)



Table Linens / Finishing & Colors

- **Mercerization:** Provides cotton with luster and higher dye absorption, enhancing its appearance, feel, and performance.
- **Common Finishes:** Includes plain finish and other treatments to improve fabric quality.
- **Indanthrene Dyeing:** Minimum order quantity of 1,000–1,500 meters per color.
- **All-Over Printing:** Includes digital and rotary printing for precise and diverse designs.
- **Solid Colors:** Minimum order quantity of 1,000–1,500 meters per color.



Table Linens: Standard and Sizes

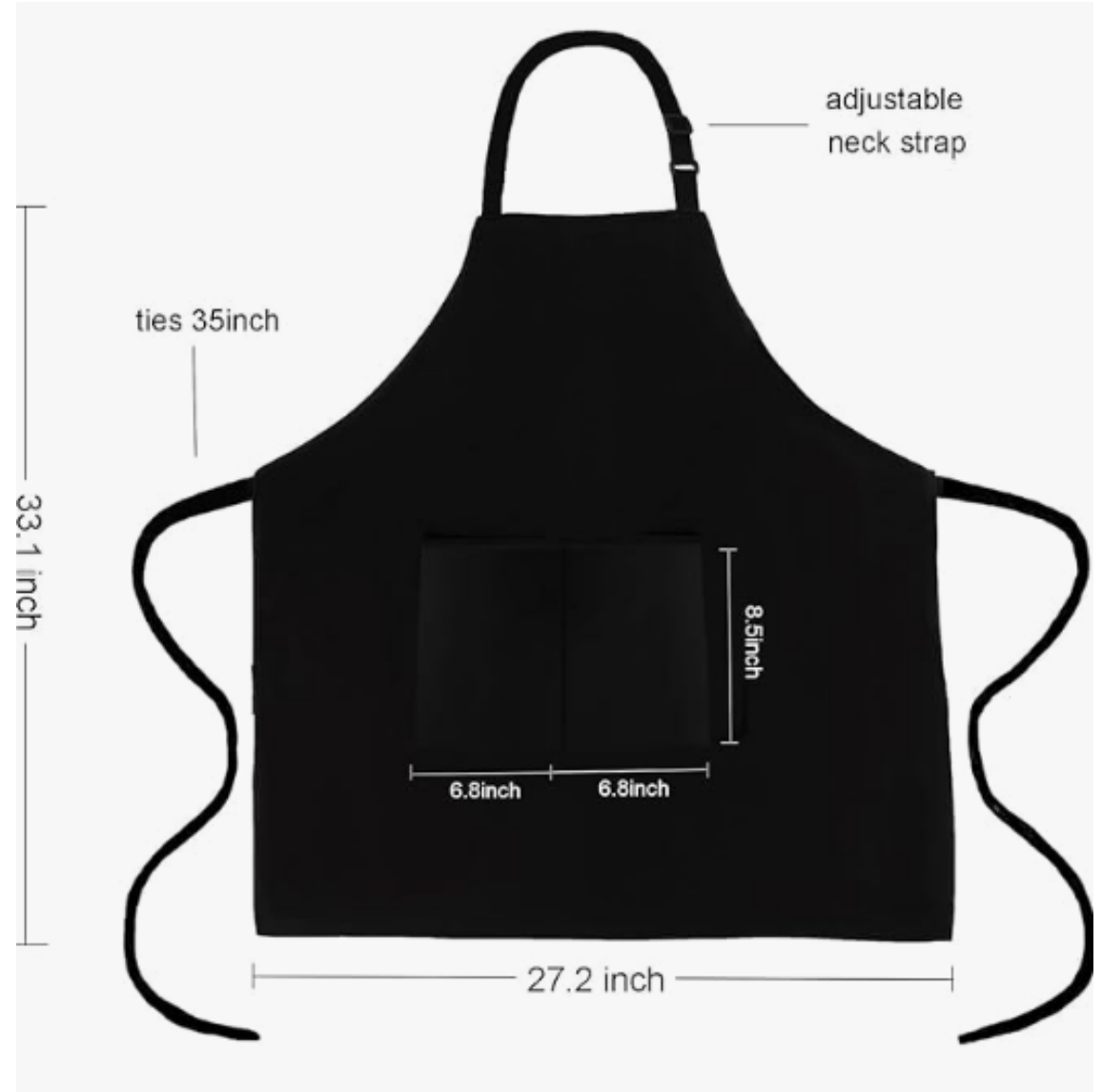
- Tablecloths
- Table runners
- Placemats
- Napkins
- Kitchen towels
- Aprons



Napkins

- Steen band
- Canvas
- Profumo dil lino
- Panama
- Canapa

Aprons



Global Standard Size Guide

- Fitted Sheets Size Chart (US & EU standards) with Mattress Height
- Flat Sheets Size Chart (US & EU specifications)
- Duvet Covers Size Chart (US & EU specifications)
- Pillowcase Sizes
- Standard Table and Tablecloth Sizes
- Standard Decorative Tablecloth Sizes
- Bath Towel Sets – Standard Sizes
- Bathrobes – Standard Sizes

Fitted Sheet combined Size Chart (US & EU) with Mattress Height										
US Size	Inches (W x L)	Centimeters (W x L)	Typical Mattress Height (Inches)	Typical Mattress Height (cm)	EU Size	Centimeters (W x L)	Inches (W x L)	Typical Mattress Height (cm)	Typical Mattress Height (Inches)	Notes
Twin	39 x 75	99 x 190.5	9-12 (Standard), 13-17 (Deep)	23-30 (Standard), 33-43 (Deep)	Single	90 x 200	35 x 79	20-30 (Standard)	8-12 (Standard)	EU Single often longer; depth can vary
Twin XL	39 x 80	99 x 203	9-12 (Standard), 13-17 (Deep)	23-30 (Standard), 33-43 (Deep)						
Full/Double	54 x 75	137 x 190.5	9-12 (Standard), 13-17 (Deep)	23-30 (Standard), 33-43 (Deep)	Double	140 x 200	55 x 79	20-30 (Standard)	8-12 (Standard)	EU Double often longer; depth can vary
Queen	60 x 80	152 x 203	9-12 (Standard), 13-17 (Deep)	23-30 (Standard), 33-43 (Deep)	King	160 x 200	63 x 79	20-30 (Standard)	8-12 (Standard)	EU King wider than US Queen; depth can vary
King	76 x 80	193 x 203	9-12 (Standard), 13-17 (Deep)	23-30 (Standard), 33-43 (Deep)	Super King	180 x 200	71 x 79	20-30 (Standard)	8-12 (Standard)	
California King	72 x 84	183 x 213	9-12 (Standard), 13-17 (Deep)	23-30 (Standard), 33-43 (Deep)	Emperor	200 x 200	79 x 79	20-30 (Standard)	8-12 (Standard)	

Flat Sheet combined Size Chart (US & EU)						
US Size	Approximate Inches (W x L)	Approximate Centimetres (W x L)	EU Size	Approximate Centimetres (W x L)	Approximate Inches (W x L)	Notes
Twin	66 x 96	168 x 244	Single	180 x 260	71 x 102	EU Single flat often wider and longer than US
Twin XL	66 x 96 - 70 x 102	168 x 244 - 178 x 259				Same width as Twin, longer length possible in US XL
Full/Double	81 x 96 - 96 x 102	206 x 244 - 244 x 259	Double	220 x 260 - 240 x 260	87 x 102 - 94 x 102	EU Double flat generally wider and longer
Queen	90 x 102 - 108 x 115	229 x 259 - 274 x 292	King	265 x 275 - 275 x 275	104 x 108 - 108 x 108	EU King flat significantly wider and longer
King	102 x 108 - 110 x 114	259 x 274 - 279 x 290	Super King	280 x 280 - 300 x 260	110 x 110 - 118 x 102	EU Super King flat wider and can be longer
California King	102 x 110 - 108 x 114	259 x 279 - 274 x 290	Emperor	320 x 285 - 330 x 290	126 x 112 - 130 x 114	EU Emperor flat considerably larger

Duvet Cover Combined Size Chart (US & EU)						
US Size	Approximate Inches (W x L)	Approximate Centimetres (W x L)	EU Size	Approximate Centimetres (W x L)	Approximate Inches (W x L)	Notes
Twin/Twin XL	68-74 x 86-98	173-188 x 218-249	Single	135-140 x 200	53-55 x 79	EU Single often shorter & narrower than US
Full/Double	81-86 x 86-98	206-218 x 218-249	Double	200 x 200	79 x 79	EU Double often square
Queen	86-98 x 86-98	218-249 x 218-249	King	220-240 x 220	87-94 x 87	EU King closer to US Queen
King/Cal King	102-111 x 86-98	259-282 x 218-249	Super King	260 x 220-240	102 x 87-94	
Oversized King	116 x 96	295 x 244	Emperor	290 x 235-240	114 x 93-94	

Pillowcase Sizes

Size	Centimeters	Inches	Corresponding US Size (approx.)
Standard	50 x 75	20 x 30	Queen
Square	60/65 x 60/65	24/26 x 24/26	Euro Sham
King/Super king	50 x 90	20 x 35	King
European	50 x 80	20 x 31.5	Between Queen and King

Standard sizes tables & tablecloth

Table Shape	Standard Table Size (approx.)	Seats	Suggested Tablecloth Size (approx.)	Notes
Rectangular	36" x 48"	4-6.	52" x 70"	
	36" x 60"	6	60" x 84"	
	36" x 72"	6-8.	60" x 90" or 60" x 104"	
	48" x 72"	8	70" x 104" or 70" x 120"	
	48" x 96" (8-foot banquet)	8-0.	90" x 132"	Often for a longer drop on banquet tables
	48" x 120" (10-foot banquet)	10-12.	90" x 156"	Often for a longer drop on banquet tables
Round	36" diameter	2-4.	70" diameter	
	48" diameter	4-6.	70" or 90" diameter	
	60" diameter	6-8.	90" or 108" diameter	
Square	30" x 30"	2		
	36" x 36"	2-4.	50" x 50"	Small square, often bistro or accent table
	42" x 42"	4	56" x 56"	Common small dining or game table
	48" x 48"	4	62" x 62"	Larger square dining table
	54" x 54"	6-8.	68" x 68"	Can comfortably seat more
	60" x 60"	8	74" x 74"	Larger square for more seating
		8-10.	80" x 80"	A very spacious square table

Standard sizes Table runners

Table runners standard sizes			
Table Size (Length)	Suggested Runner Length	Typical Width	Notes
4-Seater (36-48 inches)	54-70 inches	12-14 inches	Allows for a 9-11 inch overhang on each end.
6-Seater (60-72 inches)	70-90 inches	12-14 inches	Allows for a 10-12 inch overhang on each end.
8-Seater (72-96 inches)	90-108 inches	12-14 inches	Allows for a 9-12 inch overhang on each end.
Small/Accent Tables	36-48 inches	Varies (can be narrower)	Often used in the center without a significant overhang.

Bath Textiles: Towels Standard sizes

Towel Type	US Standard Size (inches)	EU Standard Size (cm)	Common Uses
Bidet Towel	Typically 10-13 square	Typically 25-33 square	Drying after bidet use
Wash Cloth	12 x 12	30 x 30	Washing face and body, general cleaning
Hand Towel	20 x 40	50 x 100	Drying hands
Face Towel	Typically 12 x 12	Typically 30 x 30	Another term for washcloth in the US
Bath Towel	27 x 52	70 x 135	Drying off after a shower or bath
Bath Sheet	35 x 60	100 x 160	Larger towel for more coverage after bathing
Pool Towel	30 x 60 (approx.)	100 x 160 (approx.)	Larger, often lighter towel for pool or beach use



Bathrobe standard sizes

US Size	EU Size (often FR/DE)
S (34-36)	44-46
M (38-40)	48-50
L (42-44)	52-54
XL (46-48)	56-58

Certificates



STANDARD
100

58147
OETI

www.oeko-tex.com





Our Brands



Check Our Website

ech-eg.com



for details and inquiries:

info@ech-eg.com