



PERFORMANCE FABRIC COLLECTION

Body & Soul 4

WATER REPELLENT FIRE RETARDANT HIGH ABRASION



Why Choose Our Products?

Water Repellent CO & Breathable

Water Repellent CO is a non fluorinated water repellent which is very environmentally friendly. Because it does not contain Fluorocarbons, APEO, PFOA, PFOS but the water repellent effect is still very good and providing a protection without affecting the breathability of the fabric.

Fire Retardant

Our fabric has a cigarette grade fire retardant feature which allows your furniture to be protected from the dangers of fire caused by cigarettes.

Durable

Seating in public areas such as cafes, restaurants, hotel lobbies and so on has a high level of use so it requires more protection so that the furniture remains durable in use for a long time, avoiding tears, color fading or even texture loss due to friction. The high durability feature is an added value to our fabric collection.

Safe For Human and Environment

Complete features don't mean we ignore environmentally friendly aspects. Our fabrics do not contain harmful ingredients such as fluorocarbons, APEO, PFOA, and PFOS. The fabrics from our collection are also Oeko-Tex Class 1 certified which is clinically proven to be safe for direct contact with human skin, even baby skin.

Suitable For



Home Furnishing



Chair



Cushion



Bed Divan



Bag & Craft



Protect Our Earth, Build a Better Future

ATEJA is committed to make our home a better place for everyone. We have integrated green production facilities in a world where the majority cares only about cost.

Since 2008, ATEJA factories are powered by natural gas and thereby reducing 32% CO₂ emission compared to those with diesel-fueled factories.

Utilizing state-of-the-art technology with modernized machinery and continuous improvement, ATEJA is able to save 18% of its energy consumption monthly.

ATEJA has also applied special techniques in our dyeing process and together with solution dyed technology, we reduce the usage of water by up to 730.141 liters per day since 2010.

Since 2012, ATEJA has also planted 100.000 trees in the neighborhood.

By using recycled, bio-degradable, and recyclable materials, you are helping to make our home to be a better place by using sustainable materials and creating less waste for mother earth.

We realize that we are a small part of the world, but change has to start from within ourself.



Read more about ATEJA
Green Movement by
scanning this QR Code.

Body & Soul 4

WATER REPELLENT FIRE RETARDANT HIGH ABRASION





Tadeo Bulky#WRC0 - 130



Tyronne Plain#WRC0 - 130



Milazzo Jazz#WRC0 - 140



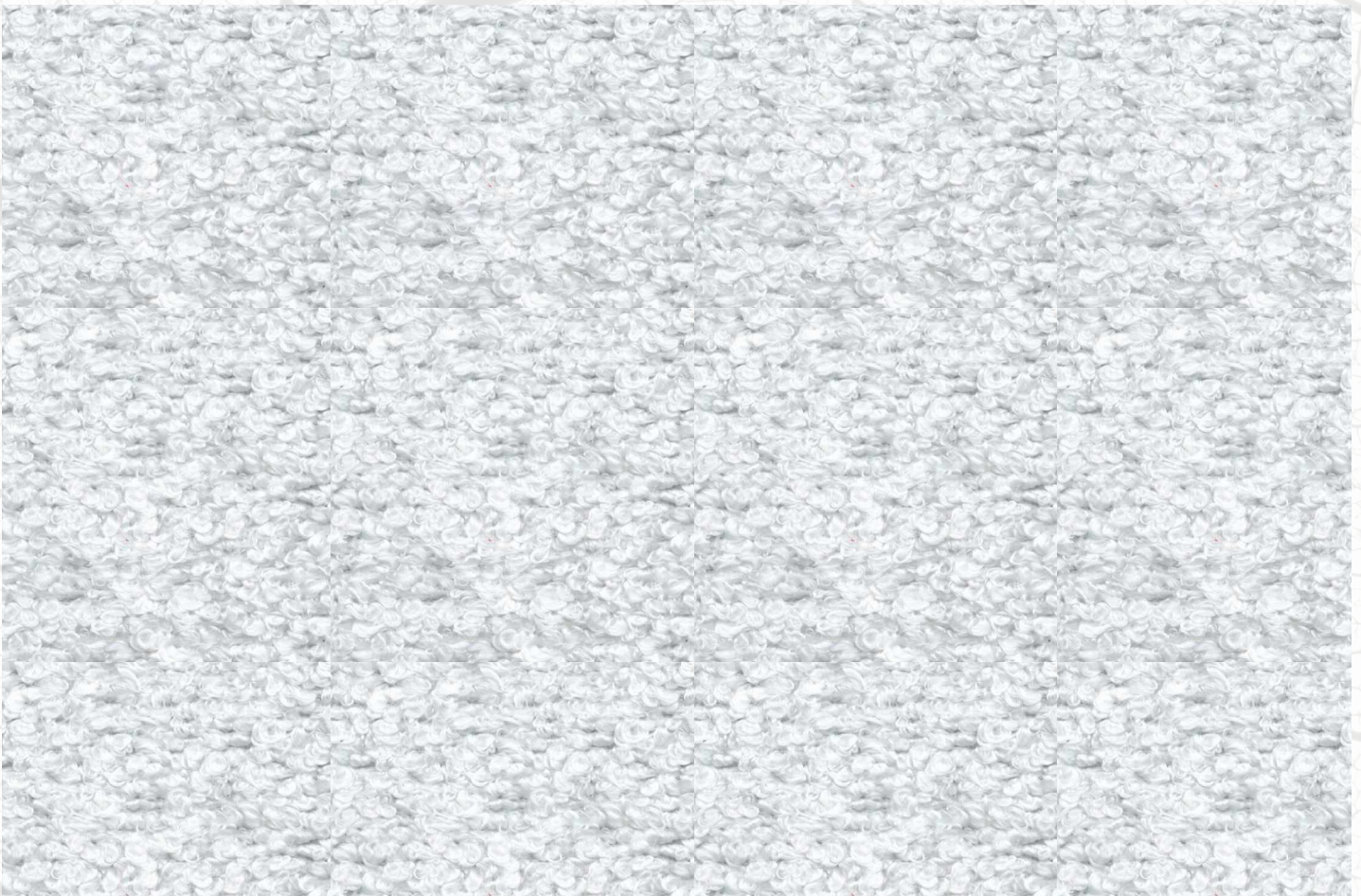
Macerata Sand#WRC0 - 140



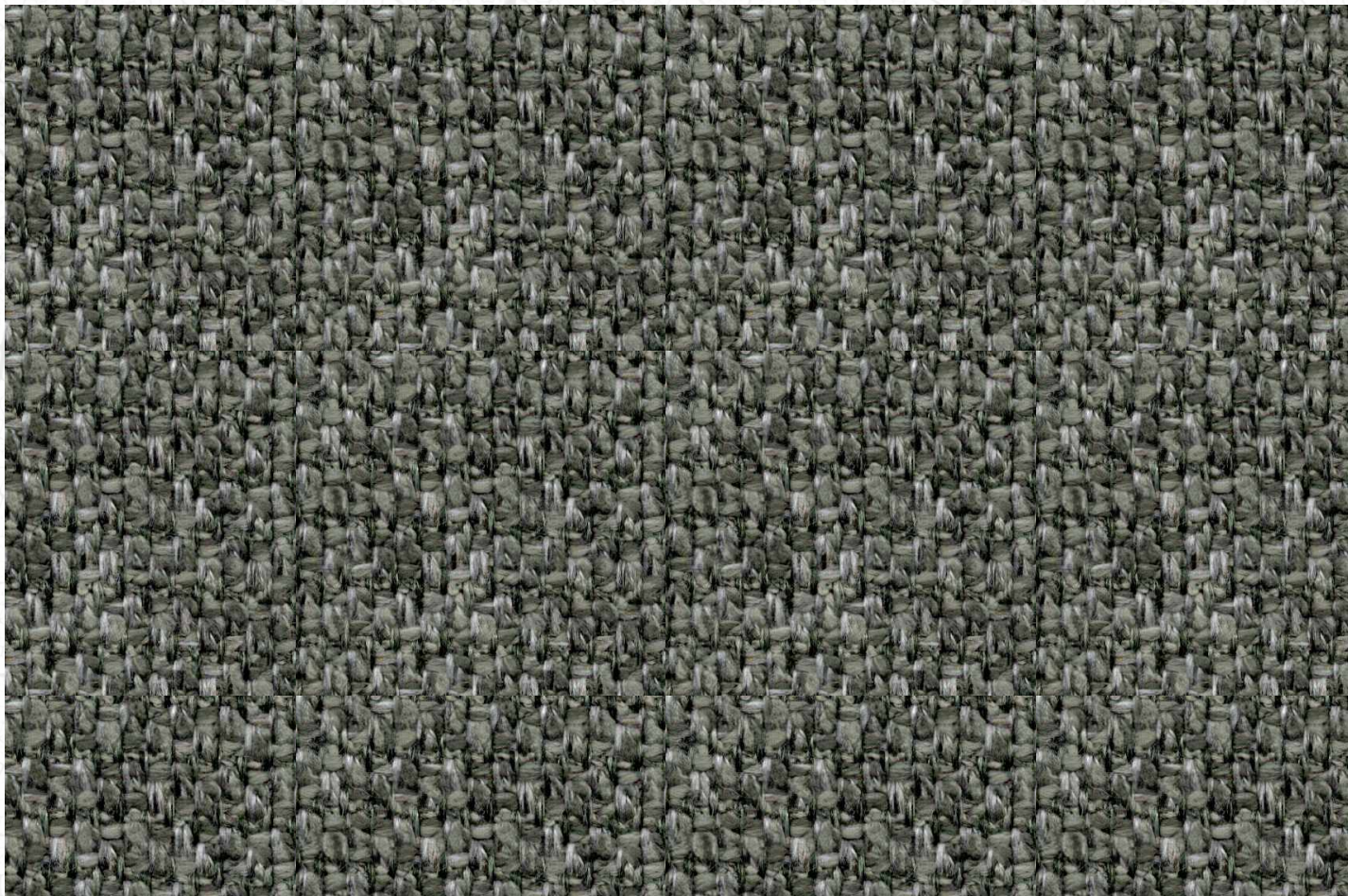
Tyronne Plain#WRC0 - 140



Tyronne Plain#WRC0 - 163



Maja Plain#WRC0 - 130



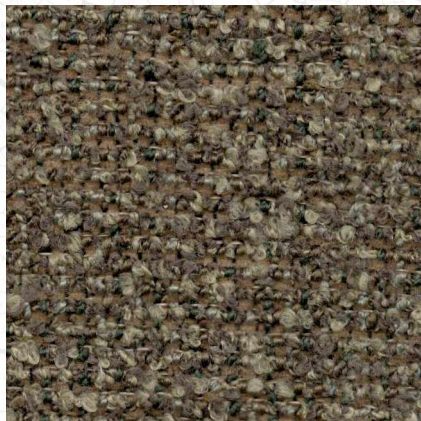
Milazzo Jazz#WRCO - 160



Milazzo Jazz#WRCO - 161



Maja Plain#WRCO - 180



Tyronne Plain#WRCO - 180



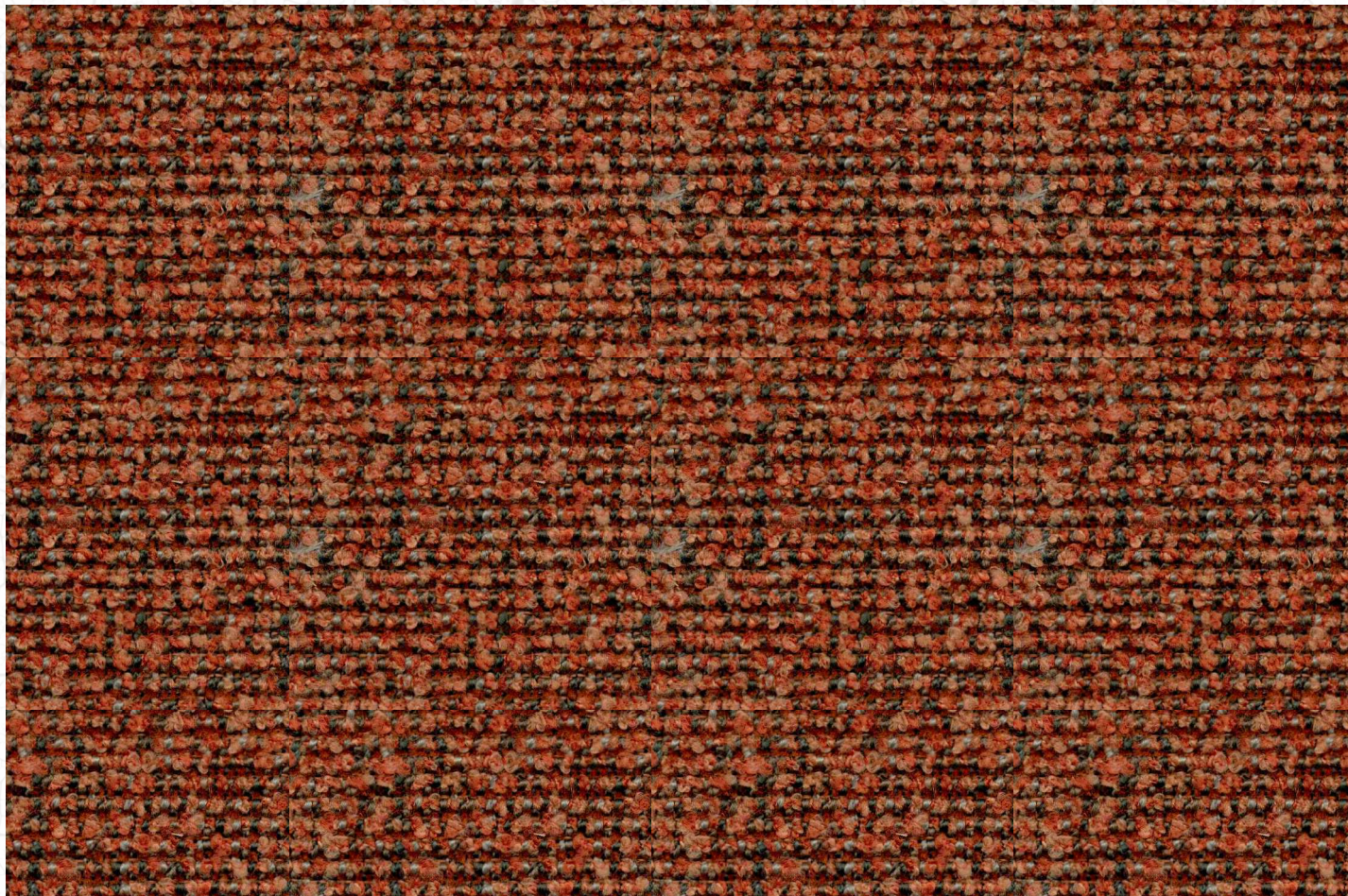
Macerata Sand#WRCO - 080



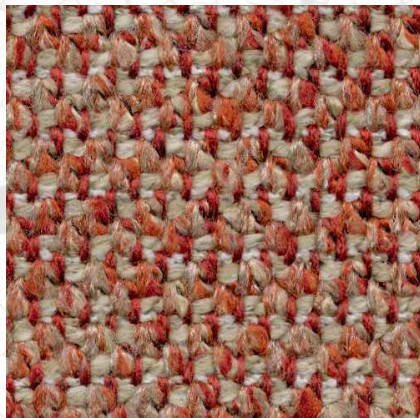
Tadeo Bulky#WRCO - 080



Maja Plain#WRCO - 083



Tyronne Plain#WRC0 - 205



Milazzo Jazz#WRC0 - 205



Maja Plain#WRC0 - 153



Maja Plain#WRC0 - 200



Tadeo Bulky#WRC0 - 140



Macerata Sand#WRC0 - 150



Tadeo Bulky#WRC0 - 150



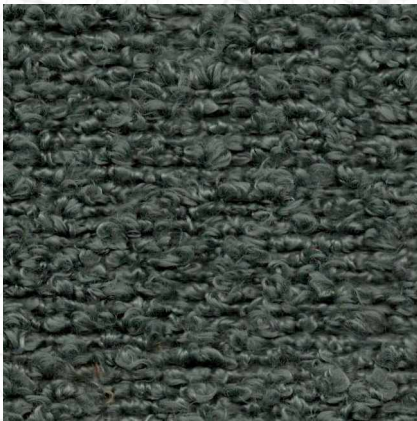
Maja Plain#WRCO - 073



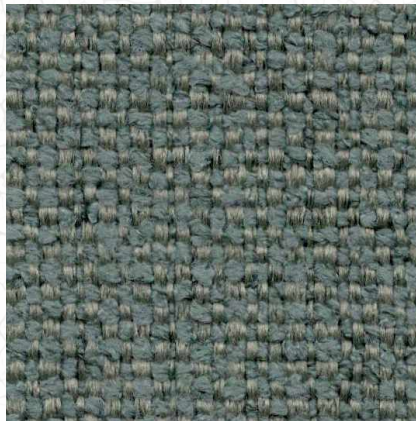
Milazzo Jazz#WRCO - 020



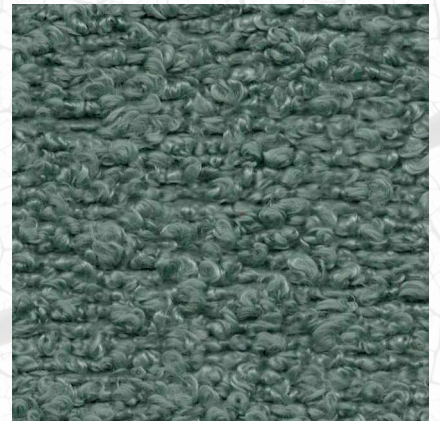
Tadeo Bulky#WRCO - 160



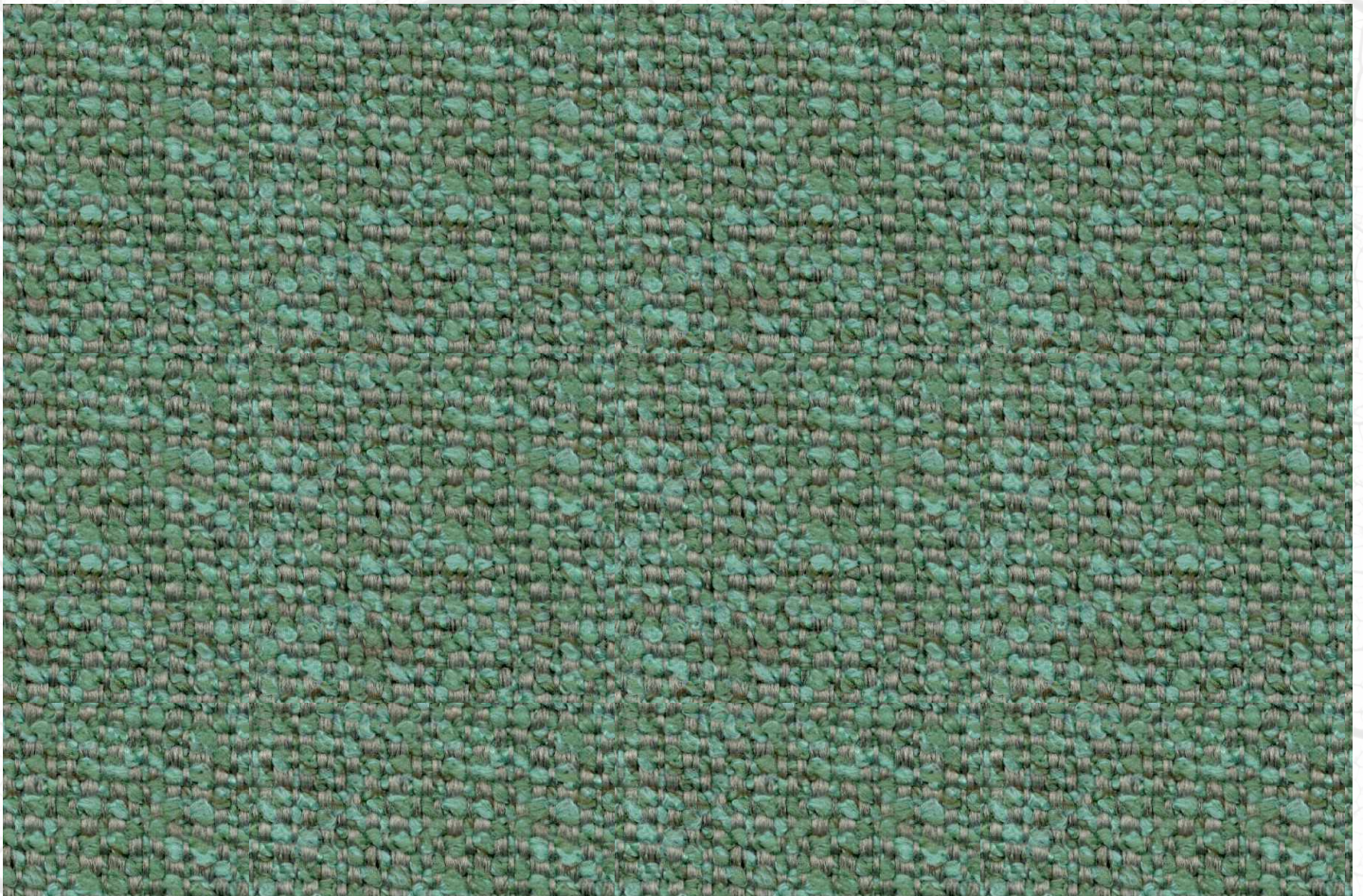
Maja Plain#WRCO - 163



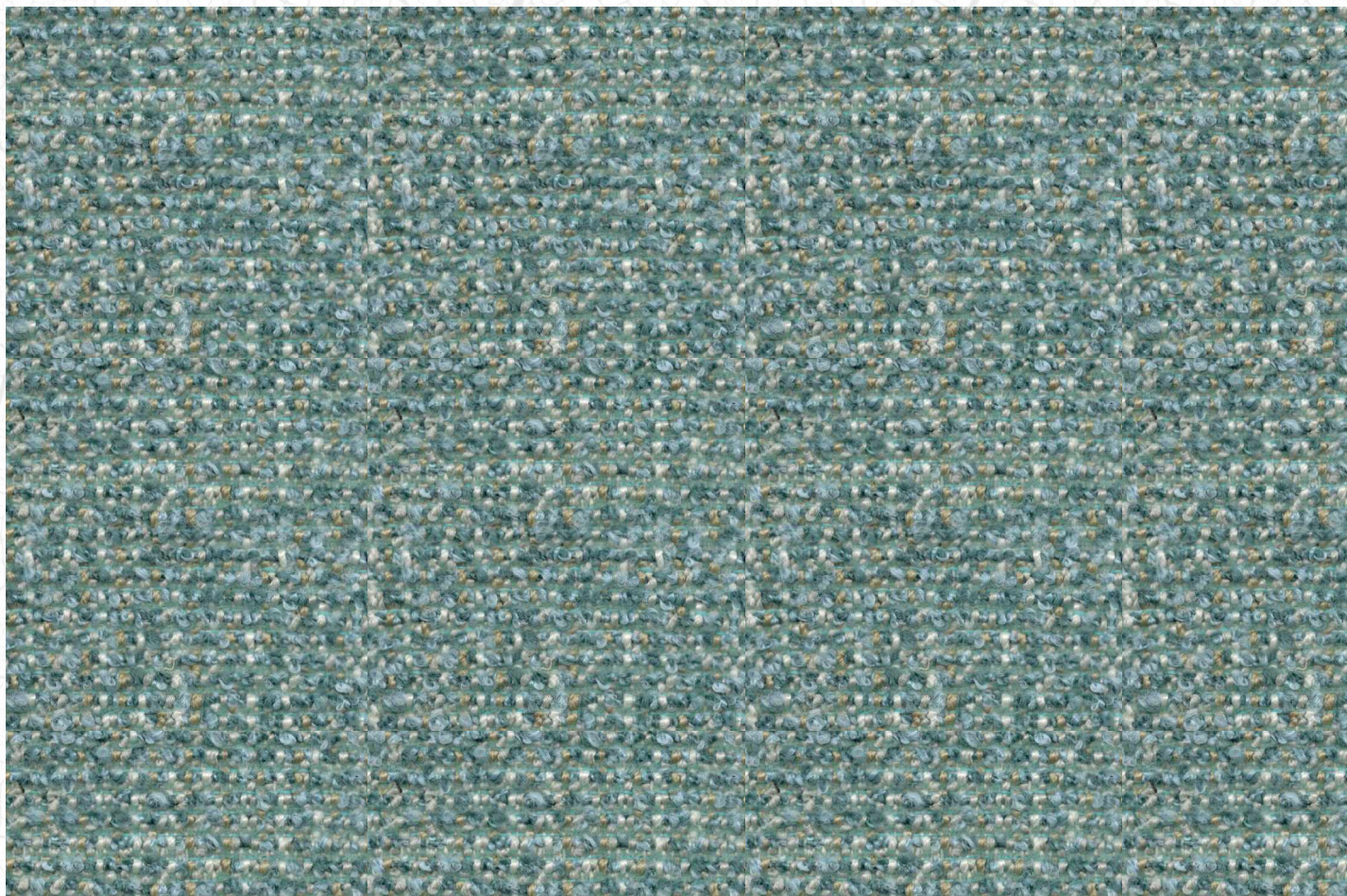
Macerata Sand#WRCO - 162



Maja Plain#WRCO - 162



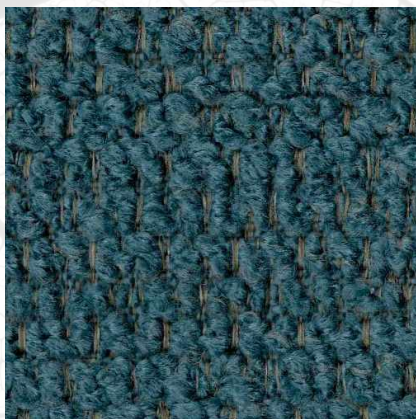
Macerata Sand#WRCO - 220



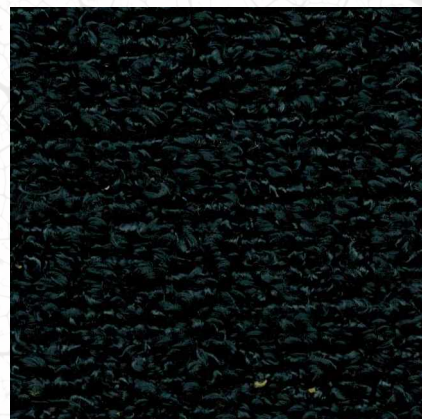
Tyronne Plain#WRCO - 040



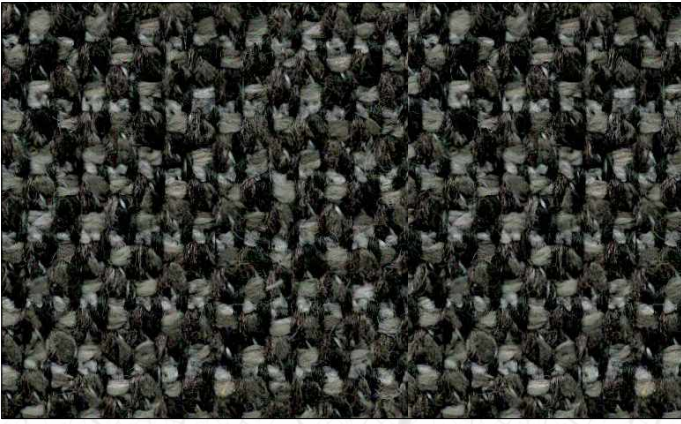
Milazzo Jazz#WRCO - 210



Tadeo Bulky#WRCO - 120



Maja Plain#WRCO - 120



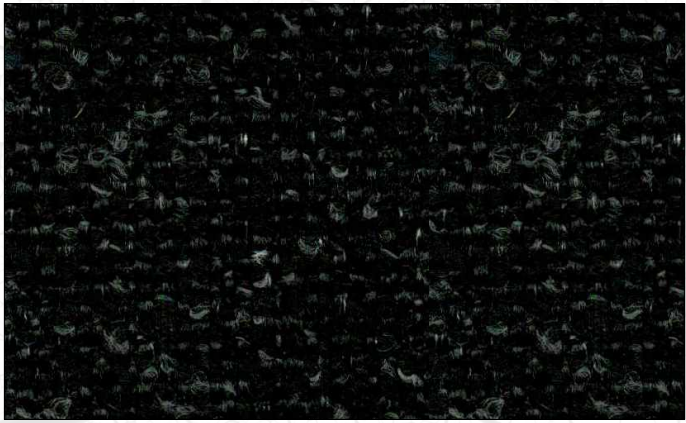
Milazzo Jazz#WRCO - 092



Tadeo Bulky#WRCO - 091



Maja Plain#WRCO - 091



Macerata Sand#WRCO - 090



Tadeo Bulky#WRCO - 090

TECHNICAL SPECIFICATION

	Milazzo Jazz#WRCO	Macerata Sand#WRCO	Tadeo Bulky#WRCO	Tyronne Plain#WRCO	Maja Plain#WRCO
Width	140 cm	140 cm	140 cm	150 cm	140 cm
Gramation	529 gr/m²	373 gr/m²	435 gr/m²	475 gr/m²	455 gr/m²
Composition	54% Polyester, 46% Olefin	100% Polyester	100% Polyester	100% Polyester	100% Polyester
Tensile Strength (Warp / Weft) (EN ISO 13934 - 1)	3,100 N 1,400 N	2,000 N 1,300N	550 N 1,900 N	2,100 N 500 N	800 N 700 N
Tear Strength (Warp/Weft) (EN ISO 13937-3)	215 N 300 N	350 N 190 N	40 N 125 N	100 N 90 N	60 N 100 N
Seam Slippage (Warp/Weft) (prEN ISO 13936-2, Load Applied 180 N)	5 mm 6 mm	6 mm 4 mm	5 mm 5 mm	5 mm 5 mm	7 mm 5 mm
Colour Fastness to Rubbing (Dry / Wet Rubbing) (EN ISO 105-X12)	4-5 4-5	4-5 4-5	4-5 4-5	4 4-5	3-4 4-5
Colour Fastness to Light (ISO 105:B02)	Grade 5	Grade 5	Grade 5	Grade 5	Grade 5
Abrasion Resistance (BS EN 14465 : 2003 Annex A)	100,000 Rubs	65,000 Rubs	70,000 Rubs	70,000 Rubs	70,000 Rubs
Pilling Test (BS 5811)	Grade 3-4	Grade 3	Grade 4	Grade 3	Grade 3
Maintenance Direction	☒ ☒ ☒ ☒ ☒ ☐				

INTERNATIONAL CERTIFICATION:



STANDARD BD015 173825
TEXTEX
100

**INDONESIAN PRODUCT
NATIONAL CERTIFICATION:**



KATEGORI 1

SNI 8765:2019
LSPR-023-IDN



**BANGGA BUATAN
INDONESIA**

MAIN FEATURES:



Fire Retardant



**Water
Repellent**



Soft Touch



Breathable



High Abrasion

Seam
Slippage



PRODUCED BY



To preserve the earth and all its contents:



Please do not
burn this sample



Please do not
throw this sample
into water