

KARUPANNYA OVERVIEW



KARUPANNYA RANGPUR LTD.



BACKGROUND OF KARUPANNYA

The creation of Karupannya dates back to the early 80's. A young boy Selim started this journey as a portrait artist and gradually transformed into an innovative artisan & a aspiring leader.



In 1991, KARUPANNYA was launched by reviving & introducing traditional SATRANJI rug on a very small scale.



In 2002, we exhibited at DOMOTEX in HANNOVER for the first time initiating our export business.

In 1991 Karupannya started with 25 families and now, in 2022 we have the opportunity to take care of about 10000 families.



Karupannya Mission & Vision

A large white statue of a woman holding a bird, surrounded by lush greenery. The statue is positioned in the center-left of the frame, with its right arm raised and holding a white bird. The statue is surrounded by dense, vibrant green foliage and trees, creating a natural and serene environment. The background is a thick wall of greenery, and the foreground is filled with various types of plants and trees, including some with orange flowers.

To meet quality to make cost saving and to create life with socio-environmental realization

Establishing sustainable employment opportunity and women empowerment in Bangladesh. Producing handmade products by eco friendly natural & recycled materials as well as contributing to the environment.



Certifications



ISO 28000:2007



OEKO-TEX



LEED



AMFORI BSCI



RCS



GRS

UIA 2030 AWARD



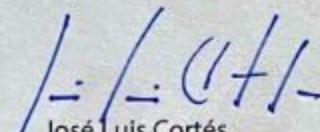
UIA 2030 AWARD

Green field Factory of Karupannya Rangpur Limited


by Nakshabid Architects

has been *Highly Commended* for its significant contribution to the 2030 Sustainable Development Goals

Category 1: All Sustainable Development Goals


José Luis Cortés
UIA President




Maimunah Mohd Sharif
UN Habitat Executive Director

Katowice, 28 June 2022

World Urban Forum 11

Business Overview



About Us

- Business Started in 1991
- Total Karupannya Turnover : \$ 50 Million
- Existing Customers: IKEA, H&M, SODIMAC, SAFAVIA, HOME DEPOT, BALTA HOME, TOKMANI, RUGS USA, VOG, MOS, ELLOS, MIO etc.
- Integration: Vertically integrated – Hand Spun Jute Spinning, Spinning to final product Jute, Cotton, Wool, r-PET, Twisting to Final of Natural Materials (Seagrass, Water Hyacinth, Corn etc)
- Main products: Rugs & Carpet, Cushion Cover, placemat, Doormat, Bath Mat, Storage and Organizer Basket, Bag, Small Furniture, Home Accessories, Wall Accessories.
- Weaving 70 MT/day (Jute: 37.5 & Cotton: 32.5)
- Stitching (Zigzag): 4 MT/day
- Hand Weave: 0.8 MT / Day
- Yarn dyeing 7.5 MT/day
- Total Employees (Worker): 5,000 (80 % Female)



Karupannya Team



Shafiqul Alam Selim
Managing Director



Shurafa Hossain Shila
Director
Corporate Finance



Siddhartha Lahiri
General Manager
(Finance, IT & Sustainability)



Altaf Hossain
Director
Commercial & Procurement



Sayad Anwar Habib
General Manager
(Merchandising & Operation)

Quality team



M.K. Jumlat Apu
Deputy General Manager
Total Quality Management



Alamgir Hossain
Manager
Quality Inspection



Hasanuzzaman
Deputy Manager (Quality Assurance)
Product Quality



Sangita Sarkar
Officer (Quality)
Documentation & Packaging

Sustainability



Abu Hasan
Manager (HR & Admin)
Social



Raisul Hasan
Manager (Compliance)
Environment

Production Planning



Riyad Mahmud
Asst. General Manager
Capacity Planning & Inventory Management



Ishat Islam
Industrial Engineer
Capacity Analysis & MIS

Business Team



Azmul Haque
Manager
Merchandising



Nazmul Huda
Asst. Manager
Merchandising



Roman Khandakar
Sr. Merchandiser
Merchandising



Capacity Available:

Weaving Capacity/day



Pit Loom:

- Weaving (PL Large & Small)
- Loom: 1256 No's
- Total: 6507 Sqm



Dobby Loom:

- Weaving PWL Large
- Loom: 9 No's
- Total: 587s Sqm



Power loom (Shuttle):

- Weaving PWL Small
- Loom: 119 No's
- Total: 18602 Sqm



Jute Loom:

- Weaving Large, Medium & Small
- Loom: 42 No's
- Total: 8856 Sqm



Rapier Loom:

- Weaving RP Loom
- Loom: 27 No's
- Total: 15757 Sqm



Punja Loom

- Weaving Punja Loom Large
- Loom: 194 No's
- Total: 117 Sqm



Capacity Available:

Capacity/day



Dyeing:

- Dyeing Cotton
- Total: 7500 kg



Rope Twisting:

- Twisting Jute
- Total: 22000 kg



Wool Spinning:

- Spinning Wool
- Total: 1000 kg



Zigzag:

- Zigzag Stitching
- Total: 4000 kg



Digital Printing:

- Total: 3000 Sqm



TPE Backing:

- Total: 3000 Sqm



Capability at a glance

■ Main Materials

- Jute (Oekotex)
- Recycle Cotton (Oekotex)
- Textile Waste (Oekotex and GRS)
- Wool (RWS)
- r-PET (Oekotex and RCS)
- Sea Grass/ Water Hyacinth/ Palm Fiber / Sisal

■ Product area / Category

- Rugs & Carpet
- Door Mat / Bath Mat
- Place Mat / Coaster
- Storage Basket and Organizer
- Small Furniture
- Home Accessories and Wall Accessories

■ Sustainability

- Renewable Energy 100 KW, about 8% of total consumption
- Biological ETP plant with ZLD
- Energy efficient Servo Motor
- Rice Husk Boiler
- Rain Water Harvesting



Jute Carpet



Recycle Cotton Carpet



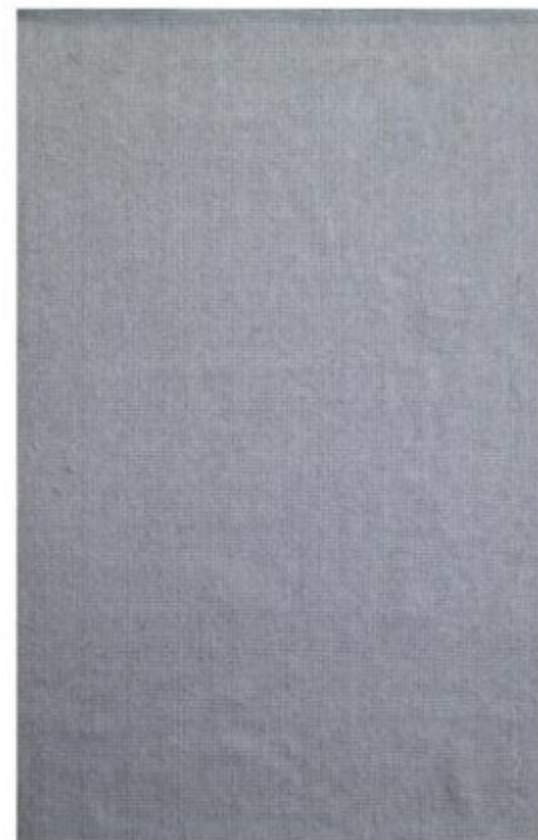
Rag Rug



Wool Rug



r-PET Rug



Bath Mat



Door Mat



Door Mat with Anti-Skidding
Facility (TPE Backing)



Round Rug



Sea Grass Products



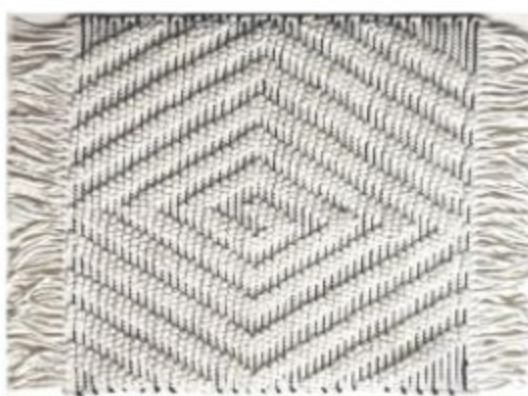
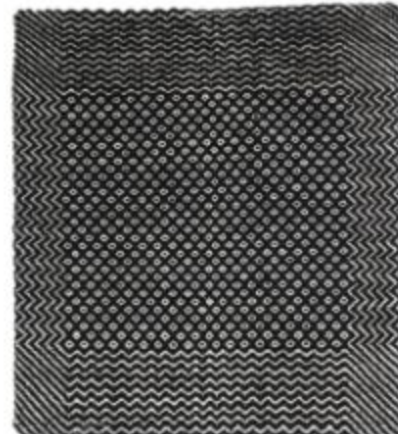
Storage and Organizer



Place Mat & Coaster



Cushion Cover



Home & Wall Accessories



Crochet Items



Article: Storage Basket
Material: Knitted Fabric (Cotton)
Technique: Crochet Knitting



Article: Placemat
Material: Cotton Yarn
Technique: Crochet Knitting



Article: Wall Hanging
Material: Cotton Yarn
Technique: Crochet Knitting



Article: Cushion Cover
Material: Wool Yarn
Technique: Crochet Knitting

SWOT-Karupannya

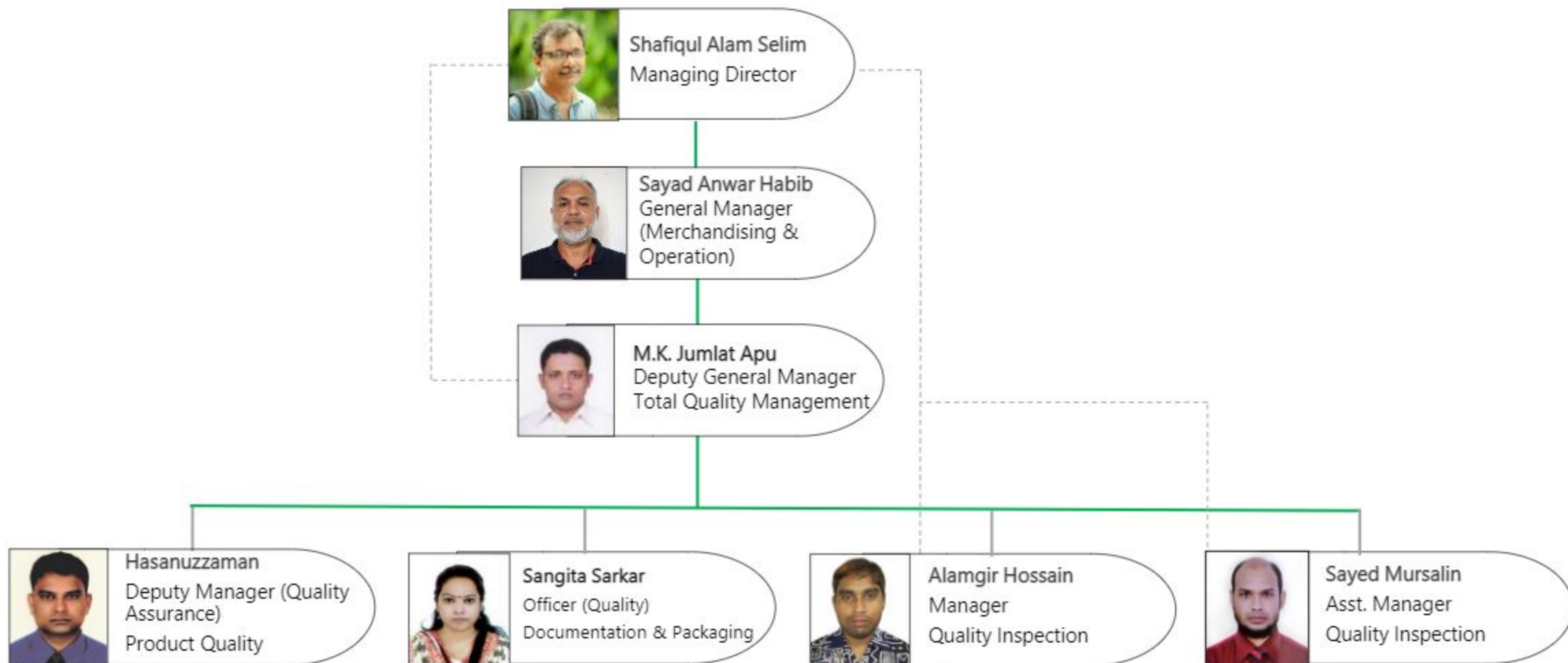
	Helpful for my objectives	Harmful for my objectives
Internal origin	<ul style="list-style-type: none"> • Unique handmade & machine made product set up • Diversified product range & material, speedy & innovative product development capability • Natural Materials (Water Hyacinth, Seagrass, Sisal, Coir, Maize, Jute & Rice straw, Palm Fiber) • Competitive Price offer for handmade & Natural Material Products • High Sustainability agenda (ZLD, Water reuse, rice husk, Renewable Energy, Rain Water Harvesting) • Women Empowerment, Workers benefit initiatives. • Landed duty free EU/CA/Japan/Australia/UK/AP • In-house recycled spinning Plan to consume wastage 	<ul style="list-style-type: none"> • Wastage in production • Efficiency in production
External Origin	<ul style="list-style-type: none"> • Secured Supply Chain for long term business • Low Cost Product development opportunity • Product from More sustainable source • Diversified Material Range & Newness • Willing for Expansion for long term business growth • Social Project 	<ul style="list-style-type: none"> • Small Order Quantity • Order Consistency



Quality
Management
System
at
Karupannya



KARUPANNYA QUALITY TEAM



Quality Policy

Customer Satisfaction is our ultimate goal. This is the basic view point of our organizational growth & leadership in market. Our quality System is able to tune with quality conscious customers.

Aim-

1. Enhance customer satisfaction
2. Decrease cost of poor Quality
3. Create a customer focused quality culture



Customer Focus

Following: Method, Testing, Inspection, Analysis, Audit & Development

Method :

1. Specification and Standard
2. Standard Operating Procedure
3. Quality Policy

Analysis :

1. Statistical analysis
2. Risk analysis

Testing :

1. External
2. Internal

Development :

1. Governance to enhance Skill
2. Motivational Approach
3. Innovation Operation
4. 5s Activity
5. Kaizen activity

Inspection :

1. Incoming goods and material inspection
2. Random Process inline inspection
3. 100% inspection in process
4. Final Inspection

Audit :

1. Product Audit
2. Process Audit
3. Document Audit
4. Needle & Sharp Tools Audit
5. Supplier Audit



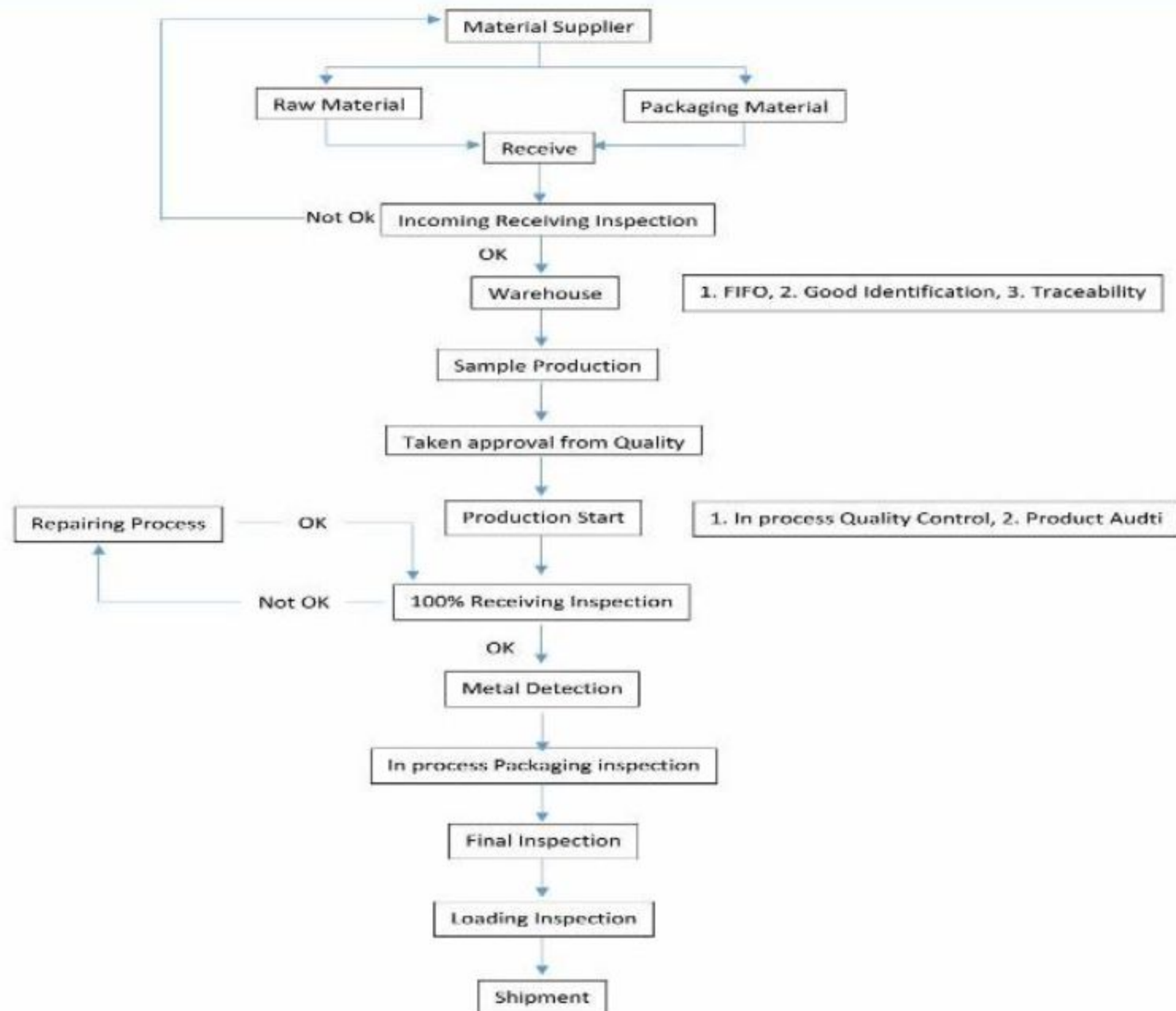
- We believe in Right from the beginning
- It is cheaper to do things right the first time



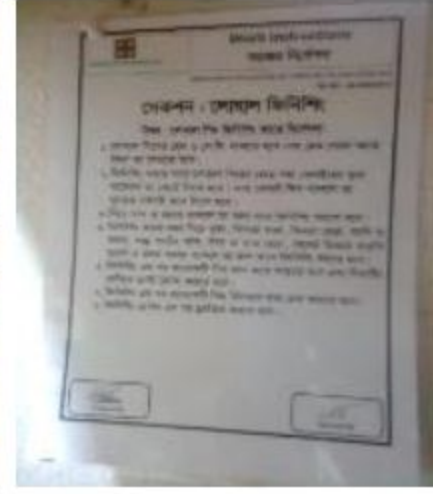
Securing the product quality from the beginning, We are doing all raw-material and packaging material/accessories receiving inspection.



Quality Control Flow-chart



Product & Process Compliance :



- Inline inspection.
- 100% product inspection before final packing
- We have 2 convener dryer, 4 cabinet dryer, 3 tumbled dryer for controlling the moisture. 100% products moisture is checked before packing.
- 100% finished product passing to packaging area through Metal detection machine.
- Identification and segregation of conforming and nonconforming goods
- visual work instruction display to floor.
- DATA analysis and review
- Each lot of Dyes/chemical in-housed after doing proper incoming inspection in our internal LAB.
- Expiry date of every received material are checked very strictly.
- We are following FIFO while using this material.
- MSDS hanging in local language for easy understanding
- We have traceability system from incoming material to finish goods .



[illegible]

- Receiving inspection of 100 % packaging material, trim and accessories
- Packaging are doing in designated secured area which are completely separate from production floor
- We are doing 9 point calibration of metal detection machine in every after 1 hour.
- Display visual instruction about packing in details
- Periodical packaging audit
- Giving Training to In-charge and supervisor and make them ready for clear understanding on packaging materials, Packing sequence, Label placement

Document Compliance :

KARUPANNYA	PROCESSURE FOR	Doc. No. : KRS/003/01
	Label Control	Page No. : 01 01 Jan 2019/01

1. Scope
This procedure is for maintaining the ongoing internal compliance requirements.

2. Objective
The main purpose of this procedure is to ensure compliance.

3. Responsibility

Responsible/Accountable	Designation
Responsible	Plant Manager
Responsible	QMS Manager
Responsible	Quality Engineer
Responsible	QA Officer
Responsible	QA Assistant

4. Method/Procedure

QC	Quality Control
QA	Quality Assurance



- Document verification twice in a month
- Meeting , sharing and Training to co-worker and related department
- Maintain Internal document by control number

Verification Activity

Karupannya Rangpur Ltd.

Sl. No.	Item	Quantity	Unit	Value
1
2
3
4
5
6
7
8
9
10
11
12
13
14
15
16
17
18
19
20
21
22
23
24
25
26
27
28
29
30
31
32
33
34
35
36
37
38
39
40
41
42
43
44
45
46
47
48
49
50
51
52
53
54
55
56
57
58
59
60
61
62
63
64
65
66
67
68
69
70
71
72
73
74
75
76
77
78
79
80
81
82
83
84
85
86
87
88
89
90
91
92
93
94
95
96
97
98
99
100

Process audit

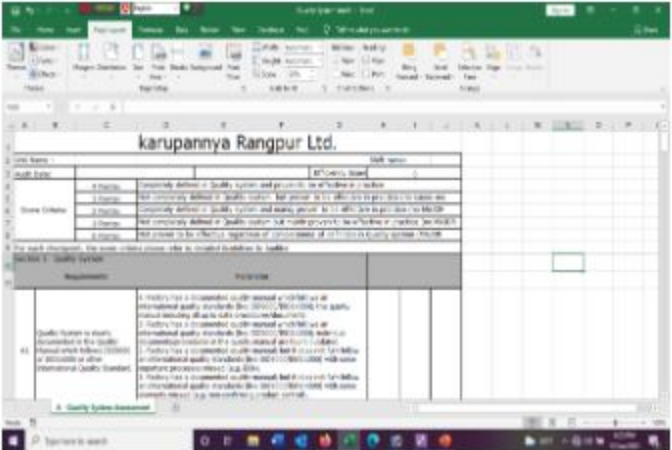
Karupannya Rangpur Ltd.

Sl. No.	Item	Quantity	Unit	Value
1
2
3
4
5
6
7
8
9
10
11
12
13
14
15
16
17
18
19
20
21
22
23
24
25
26
27
28
29
30
31
32
33
34
35
36
37
38
39
40
41
42
43
44
45
46
47
48
49
50
51
52
53
54
55
56
57
58
59
60
61
62
63
64
65
66
67
68
69
70
71
72
73
74
75
76
77
78
79
80
81
82
83
84
85
86
87
88
89
90
91
92
93
94
95
96
97
98
99
100

Product Audit



Supplier Audit



Quality System audit

Internal & External Testing

1. Testing External

Texanlab Laboratories Pvt. Ltd.
Textile & Analytical Laboratory
100, 101, 102, 103, 104, 105, 106, 107, 108, 109, 110, 111, 112, 113, 114, 115, 116, 117, 118, 119, 120, 121, 122, 123, 124, 125, 126, 127, 128, 129, 130, 131, 132, 133, 134, 135, 136, 137, 138, 139, 140, 141, 142, 143, 144, 145, 146, 147, 148, 149, 150, 151, 152, 153, 154, 155, 156, 157, 158, 159, 160, 161, 162, 163, 164, 165, 166, 167, 168, 169, 170, 171, 172, 173, 174, 175, 176, 177, 178, 179, 180, 181, 182, 183, 184, 185, 186, 187, 188, 189, 190, 191, 192, 193, 194, 195, 196, 197, 198, 199, 200, 201, 202, 203, 204, 205, 206, 207, 208, 209, 210, 211, 212, 213, 214, 215, 216, 217, 218, 219, 220, 221, 222, 223, 224, 225, 226, 227, 228, 229, 230, 231, 232, 233, 234, 235, 236, 237, 238, 239, 240, 241, 242, 243, 244, 245, 246, 247, 248, 249, 250, 251, 252, 253, 254, 255, 256, 257, 258, 259, 260, 261, 262, 263, 264, 265, 266, 267, 268, 269, 270, 271, 272, 273, 274, 275, 276, 277, 278, 279, 280, 281, 282, 283, 284, 285, 286, 287, 288, 289, 290, 291, 292, 293, 294, 295, 296, 297, 298, 299, 300, 301, 302, 303, 304, 305, 306, 307, 308, 309, 310, 311, 312, 313, 314, 315, 316, 317, 318, 319, 320, 321, 322, 323, 324, 325, 326, 327, 328, 329, 330, 331, 332, 333, 334, 335, 336, 337, 338, 339, 340, 341, 342, 343, 344, 345, 346, 347, 348, 349, 350, 351, 352, 353, 354, 355, 356, 357, 358, 359, 360, 361, 362, 363, 364, 365, 366, 367, 368, 369, 370, 371, 372, 373, 374, 375, 376, 377, 378, 379, 380, 381, 382, 383, 384, 385, 386, 387, 388, 389, 390, 391, 392, 393, 394, 395, 396, 397, 398, 399, 400, 401, 402, 403, 404, 405, 406, 407, 408, 409, 410, 411, 412, 413, 414, 415, 416, 417, 418, 419, 420, 421, 422, 423, 424, 425, 426, 427, 428, 429, 430, 431, 432, 433, 434, 435, 436, 437, 438, 439, 440, 441, 442, 443, 444, 445, 446, 447, 448, 449, 450, 451, 452, 453, 454, 455, 456, 457, 458, 459, 460, 461, 462, 463, 464, 465, 466, 467, 468, 469, 470, 471, 472, 473, 474, 475, 476, 477, 478, 479, 480, 481, 482, 483, 484, 485, 486, 487, 488, 489, 490, 491, 492, 493, 494, 495, 496, 497, 498, 499, 500, 501, 502, 503, 504, 505, 506, 507, 508, 509, 510, 511, 512, 513, 514, 515, 516, 517, 518, 519, 520, 521, 522, 523, 524, 525, 526, 527, 528, 529, 530, 531, 532, 533, 534, 535, 536, 537, 538, 539, 540, 541, 542, 543, 544, 545, 546, 547, 548, 549, 550, 551, 552, 553, 554, 555, 556, 557, 558, 559, 560, 561, 562, 563, 564, 565, 566, 567, 568, 569, 570, 571, 572, 573, 574, 575, 576, 577, 578, 579, 580, 581, 582, 583, 584, 585, 586, 587, 588, 589, 590, 591, 592, 593, 594, 595, 596, 597, 598, 599, 600, 601, 602, 603, 604, 605, 606, 607, 608, 609, 610, 611, 612, 613, 614, 615, 616, 617, 618, 619, 620, 621, 622, 623, 624, 625, 626, 627, 628, 629, 630, 631, 632, 633, 634, 635, 636, 637, 638, 639, 640, 641, 642, 643, 644, 645, 646, 647, 648, 649, 650, 651, 652, 653, 654, 655, 656, 657, 658, 659, 660, 661, 662, 663, 664, 665, 666, 667, 668, 669, 670, 671, 672, 673, 674, 675, 676, 677, 678, 679, 680, 681, 682, 683, 684, 685, 686, 687, 688, 689, 690, 691, 692, 693, 694, 695, 696, 697, 698, 699, 700, 701, 702, 703, 704, 705, 706, 707, 708, 709, 710, 711, 712, 713, 714, 715, 716, 717, 718, 719, 720, 721, 722, 723, 724, 725, 726, 727, 728, 729, 730, 731, 732, 733, 734, 735, 736, 737, 738, 739, 740, 741, 742, 743, 744, 745, 746, 747, 748, 749, 750, 751, 752, 753, 754, 755, 756, 757, 758, 759, 760, 761, 762, 763, 764, 765, 766, 767, 768, 769, 770, 771, 772, 773, 774, 775, 776, 777, 778, 779, 780, 781, 782, 783, 784, 785, 786, 787, 788, 789, 790, 791, 792, 793, 794, 795, 796, 797, 798, 799, 800, 801, 802, 803, 804, 805, 806, 807, 808, 809, 810, 811, 812, 813, 814, 815, 816, 817, 818, 819, 820, 821, 822, 823, 824, 825, 826, 827, 828, 829, 830, 831, 832, 833, 834, 835, 836, 837, 838, 839, 840, 841, 842, 843, 844, 845, 846, 847, 848, 849, 850, 851, 852, 853, 854, 855, 856, 857, 858, 859, 860, 861, 862, 863, 864, 865, 866, 867, 868, 869, 870, 871, 872, 873, 874, 875, 876, 877, 878, 879, 880, 881, 882, 883, 884, 885, 886, 887, 888, 889, 890, 891, 892, 893, 894, 895, 896, 897, 898, 899, 900, 901, 902, 903, 904, 905, 906, 907, 908, 909, 910, 911, 912, 913, 914, 915, 916, 917, 918, 919, 920, 921, 922, 923, 924, 925, 926, 927, 928, 929, 930, 931, 932, 933, 934, 935, 936, 937, 938, 939, 940, 941, 942, 943, 944, 945, 946, 947, 948, 949, 950, 951, 952, 953, 954, 955, 956, 957, 958, 959, 960, 961, 962, 963, 964, 965, 966, 967, 968, 969, 970, 971, 972, 973, 974, 975, 976, 977, 978, 979, 980, 981, 982, 983, 984, 985, 986, 987, 988, 989, 990, 991, 992, 993, 994, 995, 996, 997, 998, 999, 1000.



2. Testing Internal

Testing From ITTC China, Texanlab India, Intertek India

Note: Testing is conducted according to Specification come from customer. External test is done by nominated customer Lab.

Skill Development



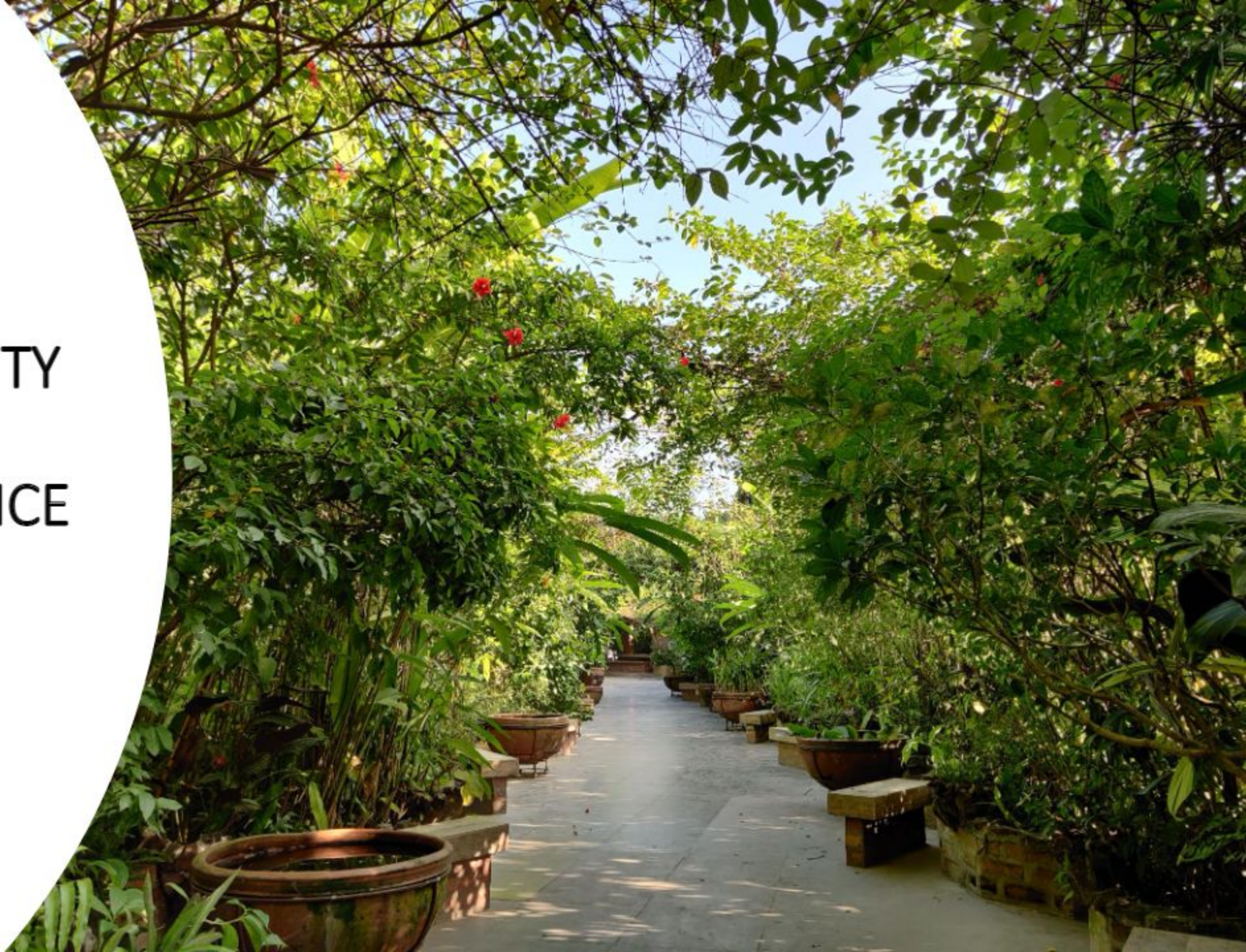
1. Training on new product
2. Training on buyer requirements
3. On floor training
4. Training for New worker
5. Periodical training for refreshment



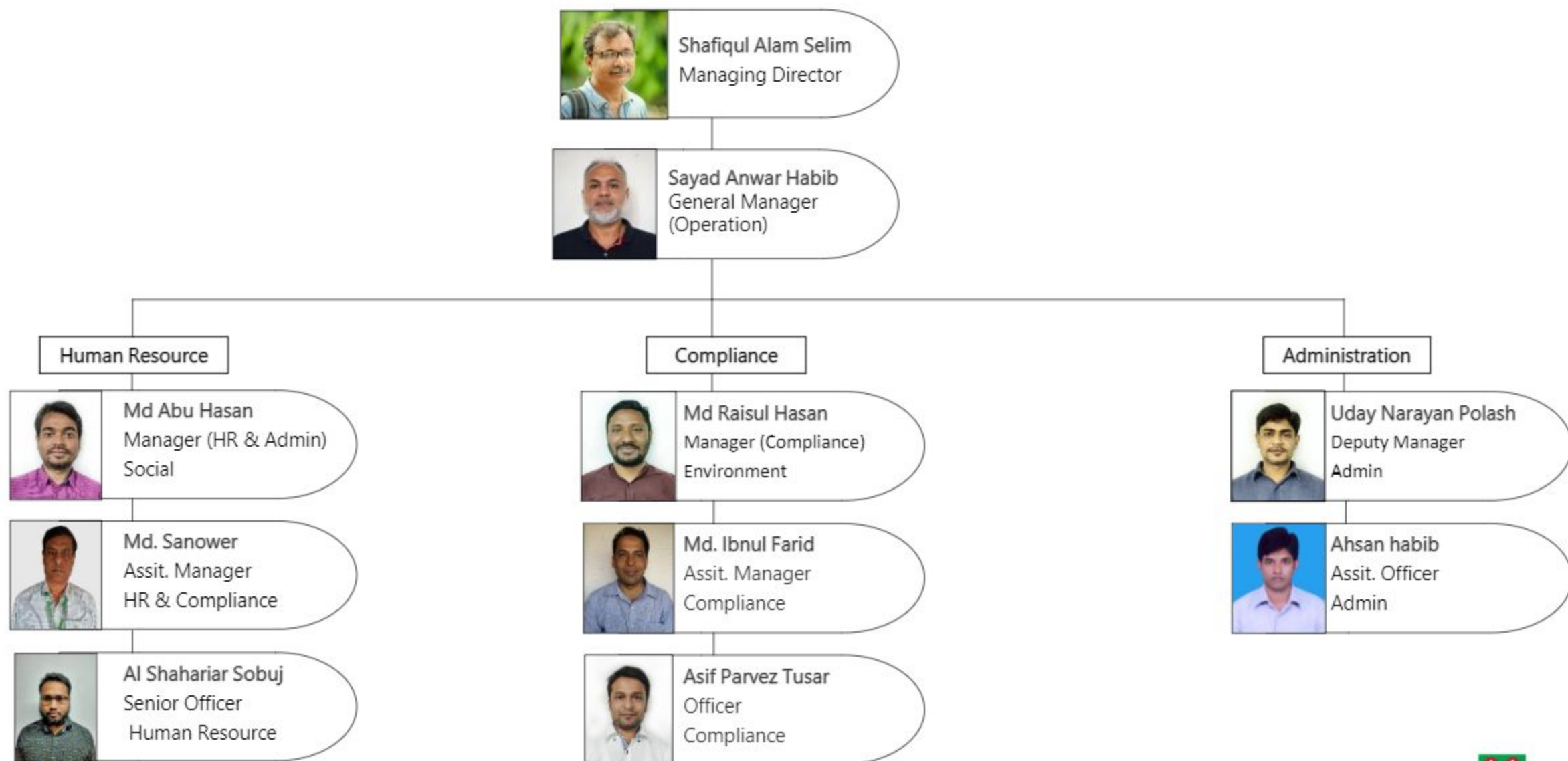
SUSTAINABILITY & GOOD PRACTICE



KARUPANNYA RANGPUR LTD.



SUSTAINABILITY ORGANOGRAM





Sustainability Agenda

- ✓ Reduce Energy Consumption,
- ✓ Reduce Water Consumption,
- ✓ Reduce Waste Generation.
- ✓ Increase circularity



NATURAL & SUSTAINABLE MATERIALS



Jute



Cotton



Wool



Water hyacinth



Sedge Grass



Hogla Leaf (Sea Grass)



Textile waste Fabric



Coir



Palm Fibre



Rice Straw



Maze Straw



Sisal

SUSTAINABILITY FOCUS (FOR PLANET)



- 4 artificial lakes with 450 CL capacity
- Reduce groundwater lifting by 2100 CL / Year
- Work as a cooling system & keep our shop floors cooler than outside.
- Water is used for fire hydrants and Dye house



- ETP operational Since FY-11
- The sludge from ETP is sent to LafargeHolcim
- ZLD operational since FY19.
- Capacity – 116,800 m3.
- Reduce groundwater consumption from Processes by 80%.
- Overall groundwater saving is 37%.



- 2 Rice Husk Boilers with 10 tons capacity
- CO2 emissions reduction 4261 tons/year
- Boiler waste recycled to produce organic fertilizer



SUSTAINABILITY FOCUS (FOR PLANET)



- At present renewable energy is 50 KW getting from Solar panels and more 50 KW will be added in FY-23



- Receives sunlight directly
- Provided pathways for sunlight and air
- Pathways to enter which in turn keeps the temperature favorable for work.

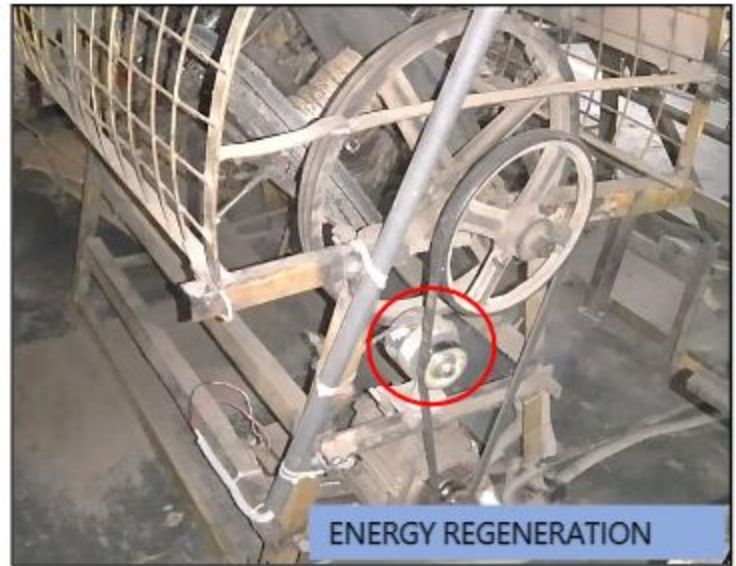
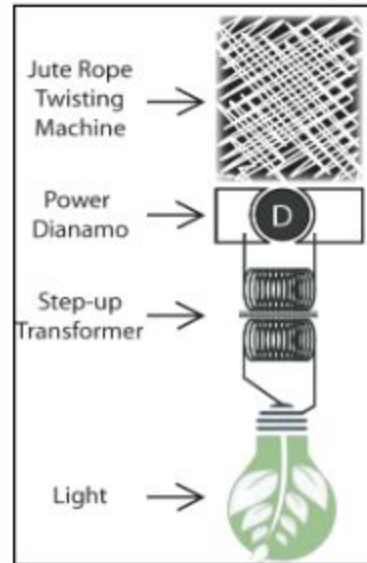


- Introducing LED lights on shop floor
- Reduction of unnecessary lights
- Saved 13,784 KW electricity / Year.

SUSTAINABILITY FOCUS (FOR PLANET)



- Organic wastes to produce gas
- Use that gas in our dorms for cooking.



- Power dynamo in rope twisting machines
- 20,000 KW / year is generated by using

SUSTAINABILITY FOCUS (FOR PEOPLE)



- 80% of workers are women.
- 9 Young workers are employed now and the goal is to double within FY23.



- Children can stay and play in the daycare center
- Mothers can meet and feed their babies too.



- Providing 10 minute break twice in each shift to do ergonomic exercises to keep the body free and relaxed.

SUSTAINABILITY FOCUS (FOR PEOPLE)



- Full-time medical support at Factory for employees and their family members.
- Treatment support to all employees up to 100% fee waiver from the agreed Local Community Hospital.

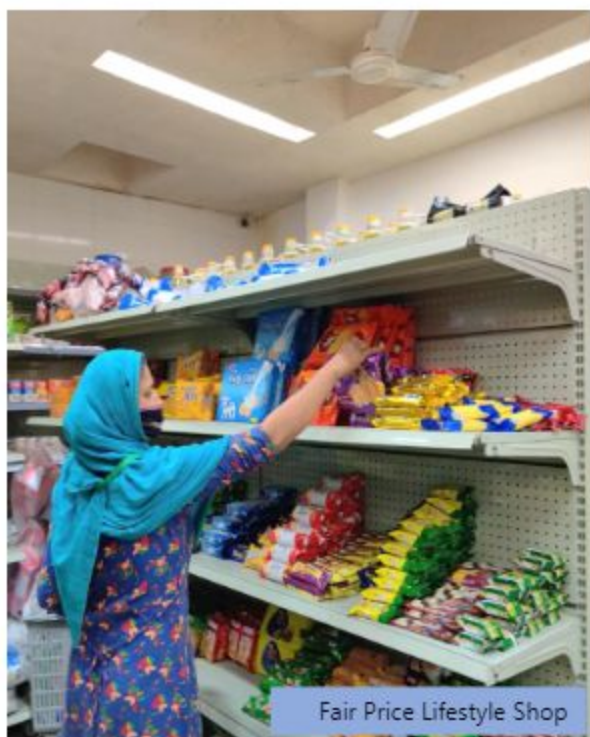


- Providing packet light food to all employees after dinner for refreshment



- Provide free Sanitary Napkins to all of the Female employees without any hassle or hesitations.

SUSTAINABILITY FOCUS (FOR PEOPLE)



- 30 days credit facilities.
- Price is less than the market price.



- Employees & workers under banking operations by paying the monthly salary/wages
- The Mobile banking facility is also provided for workers.



- Feel it's our responsibility to ensure the safety and security of our people.
- Sprinkler and smoke detector are installed in the full premises.

EXCEPTIONAL HEALTHCARE FOR WORKERS & THEIR FAMILIES FOR FREE



Consultation with pregnant workers



Screening for breast cancer

Karupannya works for their peoples welfare and good health.

- Full fledged medical centre 24/7.
- Free primary medicines and sanitary napkins to all of our employees.
- Counselling session for pregnant workers & their regular health check-up.
- Breast cancer awareness & screening.
- Treatment support to the all employee up to 100% fee weaver from the agreed Local Community Hospital.

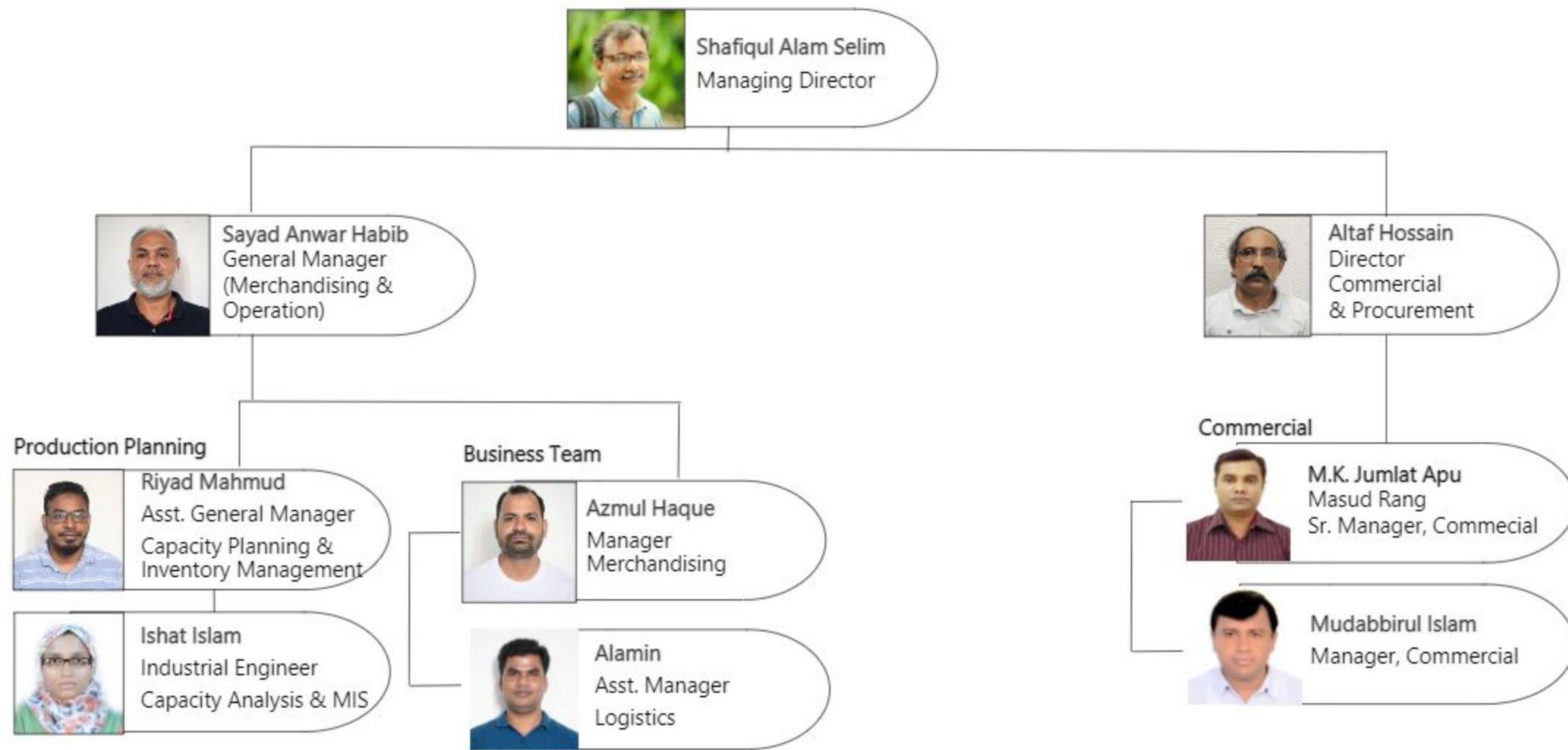
TRAINING



Mass training for skill development and awareness

- PPE
- Ergonomics
- Machine safety
- Health & safety
- Refreshment (COC)
- Grievance
- Awareness
- Fire Training
- Anti-Harassment
- Wastage handling
- Anti-Discrimination Business Ethics
- Emergency Response Fast Aid
- Injury Awareness Women Hygiene
- New Mother
- Chemical Handling

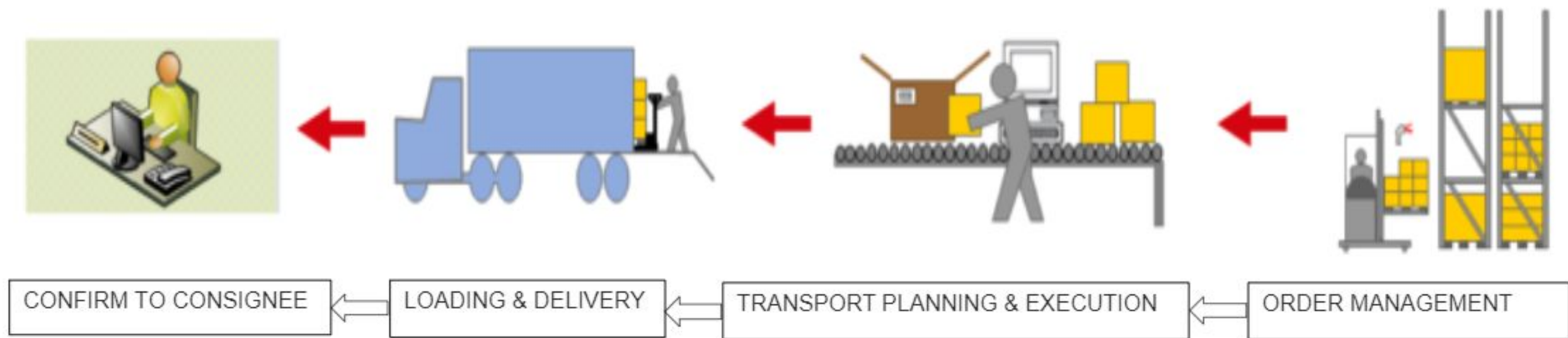
Supply & Logistics Team



TRANSPORTATION MANAGEMENT

Transportation Management makes big impact in supply chain management as the profits and products price is directly impacted for transportation cost. So in short movement of materials/products in right place and right time is important internally and externally.

We always work for optimization in a best possible way.



PACKAGING FLEXIBILITY

Different packaging solution are used and have a flexibility to accommodate a range of packing solutions based on customers' requirements.

- Fold or roll form considering the product characteristics
- Single or multi packing with or without polybag
- Single or multi packing with paper pallet or cartoon
- Paper pallets and cartoons are sourced from FSC certified suppliers

What we consider before finalizing a solution-

- Product safety
- Store handling
- Load ability
- Transport handling



SHIPPING

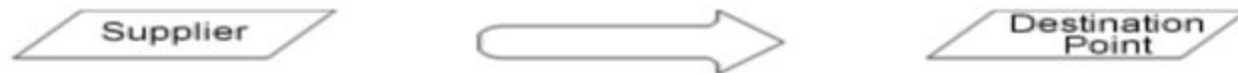
Considerations when determining which mode of transportation to use are deciding from the categories of shipping options that our product quantity, customers' requirement best fits.

1. Less than a Truck Load (LTL) & Less than a Container Load (LCL) which is partial container load.

Using for less quantity not enough for an international standard transport to export deliveries. We send these to CP for consolidating the goods with other products for sending to customers' stores via Distribution centres.

2. A Full Container Load (FCL) is a full shipping container load. It can be 20ft or 40ft

If the volume is enough, we use FCL to ship the goods to customers' stores via DC



Karupannya also can do the direct deliveries to customers' stores if it is required.



THANK YOU



KARUPANNYA RANGPUR LTD.

