

THE
WORLD
OF
EDMUND
BELL



Design-Led. Technical Expertise. Global Service.

Edmund Bell is a leading global supplier of fabrics and accessories to the commercial, institutional and domestic interiors markets.

Offering design-led technical expertise, support and service to designers, specifiers and contractors in the hospitality, leisure, healthcare, education, workspace and public sectors.

Our comprehensive range of market-leading curtain linings, workroom accessories and hardware solutions also meet or exceed all of the quality, value and application requirements for curtain makers, wholesalers and retailers.

For over 160 years we've been honing our product knowledge and manufacturing expertise to earn our reputation as your entrepreneurial partner who delivers the best quality, added value and superior service. Whether you choose from our comprehensive range of decorative blackout, dimout, sheer, woven, upholstery, prints and curtain lining solutions - or require a bespoke solution - we can guarantee a coordinated project approach across curtains, blinds, upholstery, cushions and bedding.



A proud heritage



At Edmund Bell we never rest on our laurels; we take pride in our past but look constantly to the future to take our business forward and provide our clients with an ever improving service.

Entrepreneurial textile merchant, Edmund Bell, established the company to which he gave his name in 1855, leaving the family business to his two sons when he died in 1890.

Throughout the 1930s, Edmund Bell & Company grew its product range to capitalise on the demand for blackout curtains. At the start of World War II, the need arose for blackout fabrics in homes and buildings to prevent any glimmer of light escaping through the windows and aiding the enemy aircraft during the bombing raids – the heavy black cloth that Edmund Bell produced (the Bolton Twill we still sell today) was deemed ideal for this purpose. Before long the business had successfully shifted its focus to become a specialist – and widely regarded – supplier of curtain linings, blackout and dimout fabrics.

Over the years we have worked closely with our manufacturers and finishers to develop the cutting edge processes that enable us to produce the finest quality products in the industry, and to uphold our reputation as the UK and Europe's leading supplier of curtain linings and flame retardant fabrics.

In 2005 Edmund Bell proudly celebrated its 150th anniversary by joining the elite group of companies to be awarded the UK's most coveted business accolade – the Queens Award for Enterprise: International Trade; a fitting way to mark a century and a half of success.



In 2008 the company was acquired by the Atherton family, who have been investing heavily in the facilities and innovations that will keep us at the forefront of the industry in the decades to come. Brian and John Atherton bring an additional wealth of industry knowledge to our business.

In technology terms we are leading the way with a state of the art factory and cutting edge product development capabilities; and our client-focused approach has been stepped up to deliver new levels of hands-on customer service. We boast a clued-up, UK-wide sales team to offer expert advice on our growing product range and the dedicated support of an experienced in-house customer services operation.

Exciting changes may be underway at Edmund Bell, but the commitment to outstanding quality and service that underpins our business remains as keen as ever.

Within our group of companies, we are fortunate to have our very own finishing and coating mill – purchased in 2014, they are the leading home furnishing and textiles finisher in the world.

Their expertise in textile finishing, coating and lamination is unique in the industry – with capabilities including bleaching, dyeing, coating, lamination, powder point coating, fusible coating and more.

Having our own finishing capabilities provides Edmund Bell with greater control in product development, service and quality control. We are able to constantly address our environmental efforts and control the substances used to manufacture our products. It also means we are able to provide our customers with a more bespoke offering when it comes to different coating options on our fabric ranges and also enhanced testing facilities.

Your global partner

Edmund Bell have been exporting their products around the world for over 160 years, distributing to over 60 countries throughout Europe, the Middle East, Africa, Russia, Asia, Australia, New Zealand and the United States of America. We make sure that all our fabrics adhere to international standards so that they are suitable for all environments around the world. Our customers range from independent curtain fabricators and retail shops, through to wholesalers and international distributors.

Our dedicated export team and skilled warehouse personnel are experienced and accomplished in all aspects of export orders for consolidation, ensuring all standards and criteria for each particular destination are achieved.

Working to our customers specific instructions, our team offer a tailored service which includes tracking the progress of your ordered goods from the moment they are despatched from our warehouse through to delivery to your chosen destination to ensure they arrive on time.

Edmund Bell will provide all the necessary export documentation required for all destinations, including the relevant transport documentation.



nhow Amsterdam RAI hotel



Sectors

HEALTHCARE | At Edmund Bell we offer a broad range of fabrics suitable for use across the healthcare market; from sheltered housing and nursing homes, to hospitals. We have a diverse range of colours, patterns and textures that provide a range of functional benefits from sound absorbing, heat insulating, waterproof, stain resistance and anti-microbial properties.

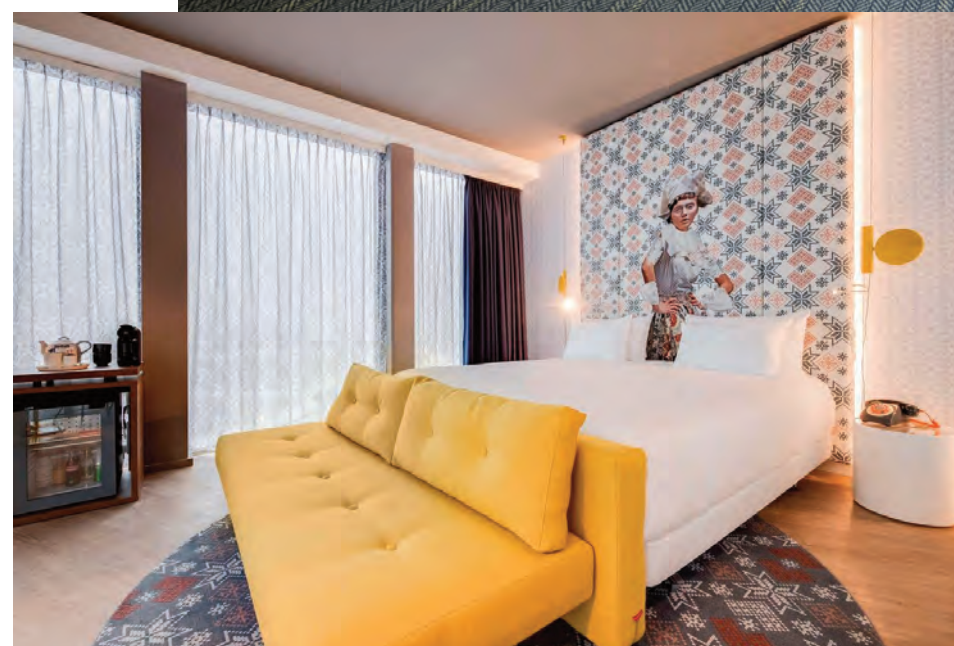
All of our fabrics are flame retardant in accordance with the required FR criteria to be used safely in all areas of the healthcare sector. We have a huge range of colour and design options allowing for careful colour combinations to ensure a beneficial effect on residents and patient moods thus having a positive impact on their well-being.

Easy care, washability and durability are key priorities in the healthcare sector, and we offer a range of fabric types to meet these needs and more. Our print collections offer great versatility and can be used for curtains, chairs, bedding and accessories such as cushions, pelmets and tiebacks. Our quality base cloths boast the highest levels of flame retardancy and durability suitable for all healthcare environments.

Our light exclusion ranges of blackout and dimouts can be used in this sector to provide a level of control, not only on light transmission, but also sound proofing and thermal properties when required. Our woven and print collections can be used to convey a more homely ambience to provide reassurance to residents of nursing and care homes – including children through to adults.

HOSPITALITY | Edmund Bell offer a high quality range of fabrics for the hospitality and leisure markets. Our collection of fabrics with their broad range of designs, colours and styles will provide you with a breadth of choice for any room or area such as bedrooms, conference rooms, restaurants and reception areas.

All our fabrics are flame retardant and across the range we offer all levels of fire resistance to meet all international FR standards. Our range encompasses blackouts, dimouts, sheers, upholstery, woven and printed furnishing fabrics, all of which can be co-ordinated for use throughout a project.



Above: Hard Rock London hotel. Left: nhow Amsterdam RAI hotel



Our print collections can add an element of fun and creativity with the practical benefits offered in our choice of base cloths covering curtains, bedding and upholstery.

EDUCATION | Our products can be used across the education spectrum, from nurseries and schools to universities and colleges. Colour and design are important to provide either stimulating or calming qualities to a room to enhance the learning and behaviour of people. We offer a unique collection of blackouts, dimouts, prints and upholsteries suitable for use in the educational market; including student accommodation with the benefits of being flame retardant, stain resistant, anti-microbial, washable, and light excluding.

Our print collections can add an element of fun and creativity with the practical benefits offered in our choice of base cloths covering curtains, bedding and upholstery. All of our print collections can be co-ordinated with our woven ranges such as Manhattan and Smooth to provide a fully co-ordinated look for student accommodation.

We have a proven track record of supplying fabrics for educational institutions across a wide range of end-usage including lecture theatres, students' unions, halls of residence, staff rooms and classrooms.

MARINE & CRUISE | Amongst Edmund Bell's extensive fabric range is a large number of IMO (International Maritime Organization) compliant products designed with maritime applications in mind. We offer a range of textiles, from luxurious fabrics designed to meet the needs of glamorous cruise liners and yachts, to fabrics and curtain linings suitable for the more practical applications required on merchant vessels such as cargo ships. All the identified fabrics meet marine FR standards and have gained international recognition.

Our fabrics can be used throughout the various different areas including the bedrooms, lounges, casinos, restaurants and bars. Our collections can be co-ordinated for use throughout a project including curtains, blinds, sheers, bedding, upholstery and cushions. Specifically, our decorative blackouts and dimouts can influence light, create atmosphere and provide sound absorption in any room to create a wonderful experience.



WORKPLACE | Edmund Bell have an inspiring range of designs and colours to suit all workplace environments, from offices, receptions and meeting rooms. Our fabrics can be used to stimulate or calm, as required, to enhance productivity and create a great working environment.

We have both linings and decorative fabrics that can be used for curtains and blinds for office windows, including blackouts for meeting and presentation areas. We supply curtain fabrics that can create a professional look and can influence light and acoustics as required. If desired, we can digitally print corporate logos and colours onto our wide range of base cloths to deliver a fully cohesive, corporate look.



HOME / RETAIL | Our fabrics are ideal for home and domestic applications; offering quality, choice and functionality along with a range of inspirational colours, textures and designs. In addition, many offer fire resistance, thermal insulation and acoustic properties and all are backed by our technical expertise.

Product categories

Our workroom products provide everything you should need for your interiors project.



LININGS | There's far more to curtain linings than the simple need to keep the light out and the heat in. While insulation is a key consideration for many people – effective linings can significantly reduce a heating bill – the practical and aesthetic value of linings are frequently underestimated.

The right linings improve the drape of curtains and protect not only curtain fabric but also carpets and other furnishings from damage by soiling, direct sunlight and atmospheric conditions. They can absorb sound, decreasing noise levels and reduce or eliminate light altogether. Clearly, when selected with care, a quality lining can make the all important difference to finished curtains – and to the homes they hang in.

We offer the widest range of high end curtain lining solutions in the UK and Europe, ranging from 100% blackouts, cotton sateen's and satin lining options, along with all the advice and support you need to choose the products that exactly meet your requirements.

ACCESSORIES | The iFix range incorporates all the workroom accessories you require for sewing curtains, including curtain hooks, tapes and weights. They come in different materials and in a wide range of sizes. We also supply high quality and durable buckram, header tapes and braided lead weight tapes.

HARDWARE | The iCon range contains all the components you require to make your Roman Blind. Utilising the latest technology, the iCon high performance system conforms to the latest safety legislation. We offer different kits in different window widths, as well as an extensive range of accessories and all the components separately, that can be used in Roman Blind make-up and installation.

Our light control fabrics offer the varying grades of light protection you need for any project setting.

BLACKOUT | Our blackout ranges offer guaranteed light exclusion and are available in a design-led range of stylish materials and colours. Many of our ranges come with extra technical performance features including stain resistance and thermal protection.

DIMOUT | Decorative dimout fabrics with up to 98% light exclusion come in a range of plain and semi-plain woven materials, produced with a very dense weave to create a versatile selection of opacities. Many of our ranges come with extra technical performance features including acoustic sound absorption, can be washed at 71 degrees for thermal disinfection and meet Oeko-tex standard 100.

SHEERS | Our flame retardant sheers add light-filtering properties to enhance privacy and create a new dimension to window decoration.



FABRIC HUB | Fabric Hub is our download portal containing all the images and documents you should ever need for our ranges and collections.

Lifestyle images, colour thumbnail images, product specification sheets, brochures, test certificates, videos and more!.....they are all available to download from Fabric Hub.





PRINT | Stylish designs on a choice of flame retardant base fabrics – all our collections have been developed in house by our highly skilled design team, embracing the latest trends and themes.

Our base fabrics are developed for use in education, healthcare, hospitality, public buildings and domestic homes. All fabrics are able to withstand commercial cleaning, and they include fabrics for curtains, bedding, cushions, upholstery and sheers.

If you're looking for something unique, Printlab is our bespoke design and print solution which can create and deliver that special fabric for your project. We can print your existing design, create a bespoke design for you, or re-colour an existing Edmund Bell design to meet your requirements.



WOVEN | Inherently flame retardant weaves that meet the very highest standards of quality and durability; these fabrics suit a wide variety of contract and domestic sector applications. Our woven designs have a wide appeal due to their diverse colour palettes and design elements, incorporating the latest trends and themes that embrace the bold, warm, contemporary and classical styles.



UPHOLSTERY | Meeting both contract and domestic abrasion requirements, our woven and vinyl upholstery fabrics are complemented by upholstery base cloths onto which any of our stylish print designs can be printed. They combine their high performance and durability properties with a soft handle and waterproof or stain resistant options.

As part of our upholstery offering you'll find Enduracare – the ultimate solution offering unrivalled technology and protection for upholstery fabric.

We understand that there is a minimum level of expectation when it comes to contract standard upholstery fabric; powered by "Enduracare" technology, our upholstery fabric is protected against the majority of spills and stains – keeping your furniture not only looking great but performing well for prolonged use.

Unrivalled protection, with "Enduracare+"
When the environment requires a waterproof and anti-microbial upholstery fabric, try our "Enduracare+" technology – it has the same features that come with the "Enduracare" technology, but with the added benefit of being:

Waterproof – our waterproofing method allows the upholstery fabric to withstand a far higher water pressure being applied against it, meaning it will outperform anything else in the market. We apply a solid continuous Polyurethane (PU) film that makes it extremely hard for water to penetrate. Alternative methods of waterproofing via "knife over roller" paste coating may be less reliable with the potential for holes in the coating.

Anti-microbial – a coating is applied which permanently kills and inhibits the growth of microbes and bacteria, helping to keep your fabric smelling great and reducing the risk of potentially harmful pathogens growing within your furniture.

Enduracare+ is the waterproof and anti-microbial coating you can trust.

Our upholstery qualities, like our other products, are not only perfectly styled for your project or setting but are highly technical and innovative fabrics with performance as standard.

What is "Enduracare" technology?

Industry-leading stain resistant finish which is applied to the face of the fabric to help repel water, oil and most staining.

A flame-retardant coating is applied to the back of the fabric; meeting or exceeding most UK and international standards, including Crib 5 and IMO. We offer a choice of coatings which are rigorously tested.

Enduracare⁺
Waterproof Stain Resistant Upholstery

Sustainability

The impact of our business and our products is extremely important to us and we are committed to working towards a sustainable future.

Edmund Bell is a proud signatory of The Climate Pledge!

What does it mean to join The Climate Pledge? The Climate Pledge calls on signatories to be net-zero carbon across their businesses by 2040.

Being part of The Climate Pledge further reinforces Edmund Bell's commitment to sustainability and taking action to reduce our effects on the environment; working together to crack the climate crisis and solve the challenges of decarbonizing our economy.

We are working hard to ensure that we are doing everything we can across new product development and other business processes, to reach our sustainability and environmental goals, including:

- Over 80% of our product range is now recyclable and we are aiming to increase this number year on year.
- Rather than be sent to landfills, our fabric waste is recycled and remade into other products used within the flooring industry.
- We now have 54 of our products certified to STANDARD 100 by OEKO-TEX® and we are continuing to add more.

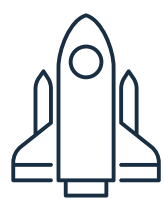
Edmund Bell aims to be net-zero carbon by 2040 and develop new products that contain recycled content.

In 2021 we locally coated enough fabric to cover the length of 10,058 football pitches, saving over 408 tonnes on our carbon footprint.

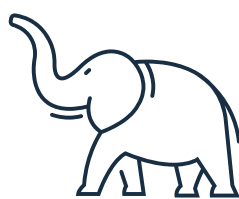
That's equivalent to:



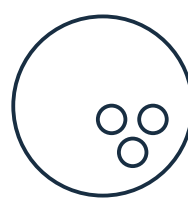
4
blue whales



5.5
space shuttles



65
elephants



60,000
bowling balls

To find out more visit
ebtozero.com

**THE
CLIMATE
PLEDGE**

Environmental

Edmund Bell are a leading supplier of fabrics and accessories and our environmental policy reflects this important position and the value that we place on it. It is our policy to source, produce and supply products and services to all of our customers that at all times supports the environment and also supports the health and safety of all of our customers, employees and suppliers.

MONITORING | In order to ensure that this policy is maintained we will constantly visit, monitor and review our suppliers and products to ensure that they minimise the use of energy and natural resources and where it is practicable use raw materials from renewable, recyclable and sustainable sources thereby reducing the impact of their use on the environment.

LEGISLATION | We will always work towards meeting with any requirements of national and international legislation applying to environmental issues and constantly strive to improve the performance and validity of our products to meet with these requirements.

DESIGN AND DEVELOPMENT | Our technical and design teams are totally dedicated to designing, developing and manufacturing products that help to minimise the effects on the environment and see this as one of the key factors when creating new products.

MARKETING | We will ensure that all of our sales and marketing activities are constantly in harmony with the needs of the environment by using recyclable products in our literature where practicable and strive to balance the needs of our customers with the sustainability of the environment.



Safety by design

There's no substitute for safety, and no substitute for Edmund Bell products when high-grade flame retardant fabrics are a priority. As one of the longest standing members of the BCFA (British Contract Furnishings Association) we are committed to our contract sector clients and have invested heavily in product innovation for the contract markets.

We've spent decades getting to know our industry inside out, from procurement to contractor operations, working closely with architects and design houses to successfully develop, manufacture and supply a comprehensive range of superior products to a growing number of contract clients in the education, healthcare, hospitality and other public and private sectors. It's safe to say we've got the experience, know-how and customer service skills to deliver in a challenging market.

As a company with a worldwide client base, all of our high quality, flame retardant decorative fabrics and curtain linings meet stringent UK and international safety standards. Safety regulations vary worldwide, so if the FR standard you require is not listed, we can arrange appropriate testing. Our sales team understand the complexities of international safety regulations and can advise accordingly.

Safety and style go hand in hand thanks to our creative design team who ensure that our flame retardant fabrics for curtains, upholstery and soft furnishings, from attractive sheers and striking transfer prints to decorative blackouts; are as good to look at as they are effective in their technical capabilities.

Our exceptional range of curtain linings – including flame retardant polyester, cotton sateen, blackout, fire barrier and bonded interlining – guarantee peace of mind in a variety of settings. Whether you need a wide width blackout or dimout; a luxurious velvet, or a functional upholstery fabric, we are on hand to help you make the right choices.

We also have a wide range of marketing collateral, from product binders, pattern cards and swatch samples to our Digital Asset Management system Fabric Hub. Contact us to find out more.





Edmund
Bell

edmundbell.com