



ESSELLE HOME

Heritage Tales Collection 2024



Three journeys, one destination:

The heart of the artisan.

Immerse your living space in a tapestry of cultural narratives with three unique collections. These three collections transport you to a place of historical beauty and rich cultural heritage.

From the English Glasshouse's celebration of the charm of the countryside, inspired by lush meadows and heritage designs, to the Folk Tale Collection's homage to global traditional patterns, including influences from Persia and Paris, each collection reflects a timeless elegance.

Embark on a global journey with the Global Treasures Collection, capturing the beauty and essence of ancient worlds like the Mughal empire and forgotten Indian gardens. Whether you want calming, soft colours or bold, rich jewel tones in your home, this digitally printed collection has something for everyone. With a wealth of diverse patterns, alongside an array of beautifully tactile plains, Heritage Tales makes it easy to create a unique and stylish look for your home.

Each design celebrates the hand of the artisan and is deeply rooted in historical and cultural tradition. Whether drawing inspiration from English heritage, global traditions, or ancient treasures, these stories invite you to transform your space into a sanctuary of refined elegance and artistic richness.

ESSELLE HOME





Global Treasures



Exotic Pavilion
Parchment/Green
100015EH



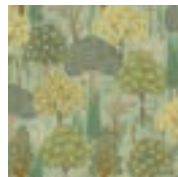
Kirra Leaf
Citrus/Green
100031EH



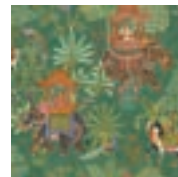
Emperor's Garden
Stone/Multi
100013EH



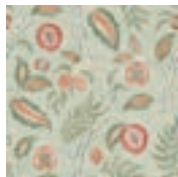
Fruits of Paradise
Ochre
100023EH



Persian Oasis
Sage Green
100040EH



Emperor's Garden
Emerald
100012EH



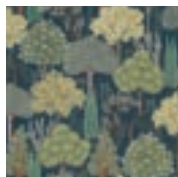
Fruits of Paradise
Soft Green
100024EH



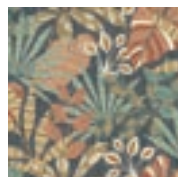
Exotic Pavilion
Navy
100014EH



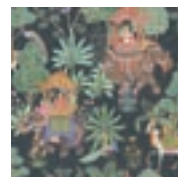
Fruits of Paradise
Navy
100022EH



Persian Oasis
Navy/Green
100039EH



Kirra Leaf
Navy/Spice
100032EH

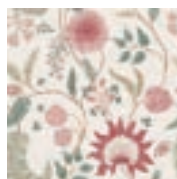


Emperor's Garden
Black/Multi
100011EH

Folk Tale



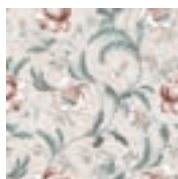
Nahlia Trail
Warm Spice
100035EH



Fable Trail
Linen/Raspberry/Green
100016EH



Floral Cartouche
Warm Spice
100021EH



Tapestry Floral
Natural/Spice
100041EH



Odina Ikat
Seafoam
100037EH



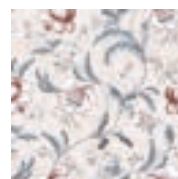
Fable Trail
Seafoam
100018EH



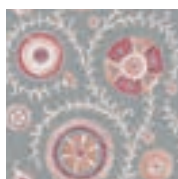
Odina Ikat
Natural
100036EH



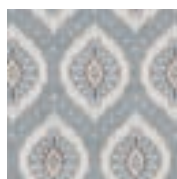
Floral Cartouche
Stone/Blue
100020EH



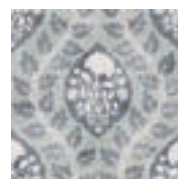
Tapestry Floral
Vermilion Blue
100042EH



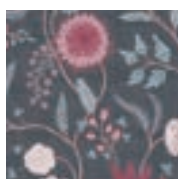
Nahlia Trail
Spice/Blue
100034EH



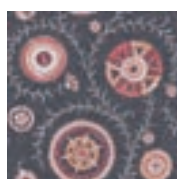
Odina Ikat
Soft Blue
100038EH



Floral Cartouche
Slate Blue
100019EH



Fable Trail
Navy/Berry
100017EH



Nahlia Trail
Navy/Berry
100033EH

English Glasshouse



Hill Top Garden
Cotton/Green
100028EH



Heritage Tulip
Taupe
100027EH



Tropic House
Parchment/Green
100044EH



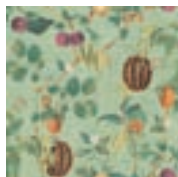
Hill Top Garden
Sage Green
100029EH



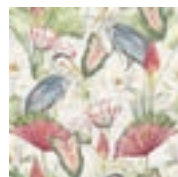
Heritage Tulip
Spring Green
100026EH



Whispering Willow
Ivory/Green
100048EH



Tropic House
Sage Green
100045EH



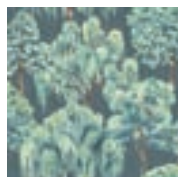
Waterlily Lake
Linen/Multi
100046EH



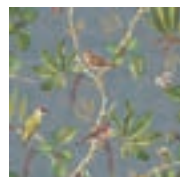
Heritage Tulip
Chalky Blue
100025EH



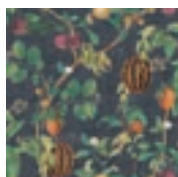
Waterlily Lake
Soft Blue
100047EH



Whispering Willow
Navy
100049EH

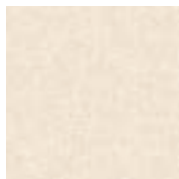


Hill Top Garden
Slate Blue
100030EH

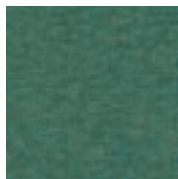


Tropic House
Navy
100043EH

Plain Textures



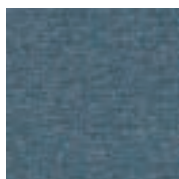
Artisan Weave
Stone
100008EH



Artisan Weave
Emerald
100001EH



Artisan Weave
Mulberry
100002EH



Artisan Weave
Navy
100003EH



Artisan Weave
Neutral/Citrus
100004EH



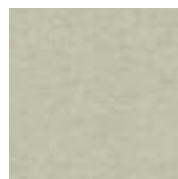
Artisan Weave
Ochre
100005EH



Artisan Weave
Orange
100006EH



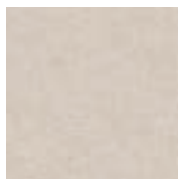
Artisan Weave
Warm Spice
100010EH



Artisan Weave
Sage
100007EH



Artisan Weave
Chalky Blue
100000EH



Artisan Weave
Warm Natural
100009EH

Cushions

Bring the charm of an English country garden or embrace the bohemian spirit with our new collection of decorative cushions from Heritage Tales. From stunning chinoiserie to hand drawn Indian inspired designs, they are sure to add depth and richness to your interiors.

Our beautiful collection of cushions all come with a feather filled pad in a 50x50cm size. Each cushion is crafted with care and features a unique design with a concealed zip. They have a wonderfully deep piped edge which only adds to their elegance and sophistication. Created from a range of fabrics to give the feel of lush velvet and tactile linens, the cushions are of the highest quality and finish. All of the designs complement our stunning wallpaper collection and are available in matching curtains and blinds, making it even easier to create an authentic curated look.



Kashmir Jacobean
Teal/Raspberry
100057EH **B**



Veda Linen
Teal/Raspberry
100055EH **B**



Santiago Geo
Red/Teal
100065EH **C**



Kashmir Jacobean
Navy/Teal
100056EH **B**



Veda Linen
Spice/Blue
100054EH **B**



Santiago Geo
Burnt Orange/Teal
100064EH **C**



Lucien Trail
Spice Pink/Green
100058EH **B**



Naya Motif
Neutral/Rose
100061EH **C**



Nima Floral
Rose/Sage
100062EH **B**

Cushions



Lucien Trail
Navy/Taupe
100059EH **B**



Naya Motif
Blue/Taupe
100060EH **C**



Nima Floral
Taupe/Soft Blue
100063EH **B**



Chinoiserie Garden
Spring Green
100053EH **C**



Botanic Vines
Spring Green
100051EH **C**



Wallington Floral
Moss/Raspberry
100066EH **B**



Chinoiserie Garden
Slate Blue
100052EH **C**



Botanic Vines
Slate Blue
100050EH **C**



Wallington Floral
Slate/Dusky Pink
100067EH **B**



Eden Plain
Nima Floral Soft Blue
100068EH **A**



Eden Plain
Nima Floral Mineral Green
100069EH **A**



Eden Plain
Chinoiserie Soft Blue
100070EH **A**



Eden Plain
Chinoiserie Oyster
100071EH **A**

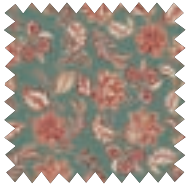


Eden Plain
Veda Mineral Green
100072EH **A**



Eden Plain
Veda Oyster
100073EH **A**

Fabrics



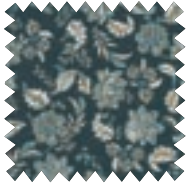
Kashmir Jacobean
Teal/Raspberry
100081EH



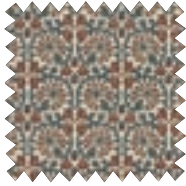
Veda Linen
Teal/Raspberry
100079EH



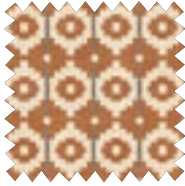
Santiago Geo
Red/Teal
100131EH



Kashmir Jacobean
Navy/Teal
100080EH



Veda Linen
Spice/Blue
100078EH



Santiago Geo
Burnt Orange/Teal
100130EH



Fabrics



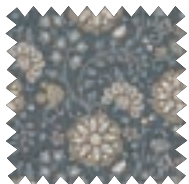
Lucien Trail
Spice/Pink/Green
100082EH



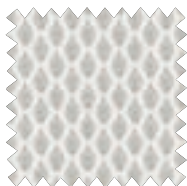
Naya Motif
Neutral/Rose
100085EH



Nima Floral
Rose/Sage
100128EH



Lucien Trail
Taupe/Navy
100083EH



Naya Motif
Blue/Taupe
100084EH



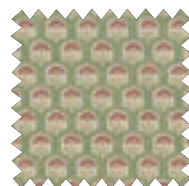
Nima Floral
Taupe/Soft Blue
100129EH



Chinoiserie Garden
Spring Green
100077EH



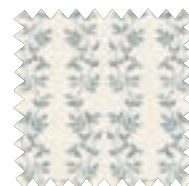
Botanic Vines
Spring Green
100075EH



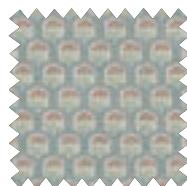
Wallington Floral
Moss/Raspberry
100132EH



Chinoiserie Garden
Slate Blue
100076EH



Botanic Vines
Slate Blue
100074EH



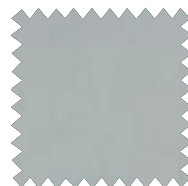
Wallington Floral
Slate/Dusky Pink
100133EH



Eden Plain
Oyster
100136EH



Eden Plain
Mineral Green
100135EH



Eden Plain
Soft Blue
100137EH



Eden Plain
Pink
100134EH



Lining Fabrics

Lining Options - Sateen Twill

- Made from **70% polyester / 30% cotton**
- The standard sateen twill lining is superior in quality to that of competitors linings and on a par with the 'superior' lining quality offered by established retailers.

Lining Options - Solprufe

- Made from **100% cotton**
- It is a thicker and smoother lining than the standard sateen twill and so provides superior drape, crease-resistance, insulation, and greater protection from sunlight.
- Available in white and cream so the customer can tailor the lining colour more specifically to their curtain colour.

Lining Options - Thermal

- Made from **65% polyester / 35% cotton** with a thin, rubberised backing applied to the lining fabric; this fills in any tiny spaces in the weave and as a result...
- Helps to prevent the heat in the room escaping out through the curtains. Helps to prevent draughts entering into the room.

Lining Options - Blackout

- Made from **70% polyester / 30% cotton** with a back coating applied 3 times (known as a "3 Pass" lining) to achieve zero light show-through (total blackout).
- All insulation benefits of Thermal.
- Great for bedrooms in general, particularly children's bedrooms, and shift workers who need to sleep during the day.



**Sateen Twill
Ivory**
70% Polyester
30% Cotton



**Solprufe
Sateen Ivory**
100% Cotton Sateen



**Solprufe
Sateen White**
100% Cotton Sateen



**Thermal 1
Pass Ivory**
65% Polyester
35% Cotton



**Blackout 3
Pass White**
100% Polyester



**Supersoft
Thermal Ivory**
52% Polyester
48% Cotton



**Blackout
Cream**
100% Polyester

Our made to measure service

Our made to measure service offers an exciting range of fabrics, including luxurious velvets, sharp geos and opulent metallics to dress the home. Drawing on an eclectic mix of vibes, from country house to exotic island, we will inspire you to create an on-trend interior.

We tailor-make an extensive range of made to measure curtains, blinds, cushions, as well as offering fabric by the metre and full pieces.

Our UK base guarantees excellent speed of service, with most orders manufactured and delivered within 14 days.

Made to measure consists of:

- Curtains and roman blinds made to your size and specification.
- A choice of linings.
- A choice of heading styles including pencil pleat, pinch pleat and eyelets.
- Fabric is available by the metre and in full pieces (30-40m rolls).

How to place an order:

- Measure for your curtains or roman blinds using the measuring guide found on page 8.
- Select your fabric.
- Pick a header if buying curtains or choose a chain colour if buying roman blinds.
- Choose a lining.
- Add your accessories, such as cushions.





Curtain headers

There are a number of header styles to choose from, including pencil pleat, pinch pleat or eyelets. All of our curtains come fully lined as standard with sateen twill, or you can upgrade to one of our performance linings, such as blackout or thermal.



Pinch pleat (triple)



Eyelet

(available in six colours satin silver, nickel, brass, gun metal, old gold, old copper)



Pencil pleat (3' tape)



Pinch pleat (double)



Curtains: Pinch Pleat

Pinch pleat is a decorative heading for curtains, suitable only for curtain poles. Pinch pleat is a more traditional heading having permanent sewn-in-pleats for a more luxurious, tailored look and are delivered ready to hang.

Adjustable metal hooks are fitted into each pleat. When ordering pinch pleat curtains, we need the exact pole width measuring between the finials. It is important this measurement is correct as pinch pleat heading is sewn in and therefore fixed. It is not possible to adjust this heading once it is made. We will gather your curtains to the correct size to fit your pole. Please state either triple pleat or double pleat heading on your order.

Please note that on a standard triple pinch pleat heading there will be 4 pleats per width. On a double pinch pleat heading there will be 6 pleats per width.

Recommended number of widths per pair (double fullness)								
Track/pole width	up to 61cm (25")	62-127cm (50")	128-190cm (75")	191-254cm (100")	255-317cm (125")	318-380cm (150")	381-444cm (175")	445-508cm (200")
Widths per curtain:	0.5	1	1.5	2	2.5	3	3.5	4

To place your order:

- 1) Measure using the guides on pages 18-19
- 2) Choose your fabric and note the price category
- 3) Select your lining and find your price from the price charts on pages 32-34

Sizing information: All sizes quoted are approximate. Please supply all measurements in centimetres to the nearest whole centimetre. Please note our fabrics may vary in width, therefore widths per curtain may vary from 127cm to 140cm. Recommendations given are guidelines and must be used in conjunction with customers personal preference.

Roman Blinds

All roman blinds are fully lined and are supplied complete with aluminium head rail and brackets ready for hanging. All roman blinds are lined with sateen twill lining as standard.

Alternative linings

Roman blinds can also be made with a choice of alternative linings.

Please choose from solprufe, thermal, blackout or supersoft.

Further prices can be found in this book.

Blackout lining

Please note that with blackout lining some light will still be visible around the edges of the blind. We recommend that blinds extend approx. 10cm beyond the window recess on all sides. Some light will also be visible along the stitch lines and this is unavoidable.

Premier head rail

Our 'premier' head rail is a fully enclosed system with a sidewinder mechanism.

A pulley chain is used to operate the blind.

Chains

Please select either a right hand or left hand control position for the blind (if no selection is given a standard right hand control will be installed).

The customer is also required to choose a silver or white chain (if no selection is given a standard silver chain will be installed).

To allow us to comply with current health and safety legislation, please supply the following information when ordering:

- Installation Height: Measurement from the top of the blind to the floor.
- Overall Drop of Blind: Measurement taken from the top of the blind to the bottom of the blind.

Blinds

Blinds can be fitted on either the inside or outside of a window recess. We recommend you position your blind outside the recess if the window is not straight to avoid the blind catching or hanging incorrectly. Another reason for having the blind on the outside would be if your window opens inwards. If more than one blind is being fitted to a window (for example in a bay window), please order the blind size required for each window as this may vary.

1) Measure the width

To fit your blind inside the recess: If ordering a blind to fit inside the recess, measure the width of the recess in 3 different positions. Supply the smallest width on the order form and we will make the necessary allowances for you by deducting 0.5cm.

Please note any protrusions (such as tiles and wooden rails) and take the smallest width and drop measurement.

To fit your blind outside the recess: Simply measure where you would like the blind to sit and supply that measurement. No allowance will be made and the dimensions supplied will include head rail and brackets.

We recommend that a blind does not extend more than 10cm either side of the window and approximately 10cm above and below. If the window ledge protrudes out we suggest that the blind sits just above or on the sill once closed.

2) Measure for the finished drop

To fit it to the recess: Measure the recess drop in 3 different positions. Supply the smallest drop on the order form.

On the outside of the window (i.e. blind size):

Simply measure where you would like the blind to sit and supply that measurement.

3) Choose your fabric and note the price category.

4) Select which lining you require and find your price on the following pages.







Contact us

Please ask about our range of coordinating
rugs and storage to complete the look.

0333 016 4134

customerservices@esselleretail.com

www.esselleretail.com

The Old Town Hall,
Spinning Point, Bacup Rd,
Rawtenstall, BB4 7LY