

SMARTFILM™
WE PROTECT YOUR BEDDING

The Principal - WHAT IS SMARTFILM™?

Smartfilm™ is a Spring registering trademark for high performance laminated fabric with excellent waterproof and breathable properties.



#1 IT'S A MEMBRANE

The SMARTFILM™ membrane is at the heart of all SMARTFILM™ products. Due to its microporous structure it has some amazing characteristics.



DURABLY WATERPROOF

SMARTFILM™ - It's A Membrane



The durability of waterproofness is really what sets SMARTFILM™ products apart.

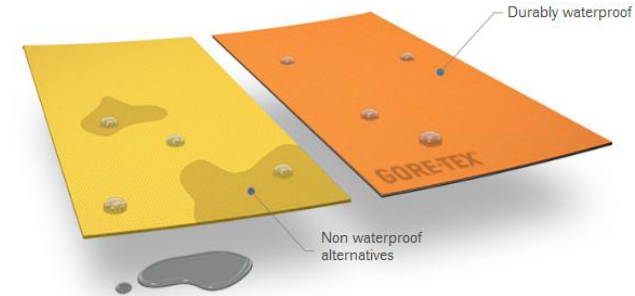
What does it mean?

The microscopic pores of the membrane are 20.000 times smaller than a water droplet.

Why is it important?

Humans perspire (and respire) about half a litre into their beds every night. Our mattress and pillow is exposed to this heat and moisture. Trapped moisture facilitates the growth of natural allergens such as molds, mildew, and dust mites.

By keeping liquid out, our durably waterproof fabric system prevents liquid getting into pillow or mattress, to provide restorative sleep and

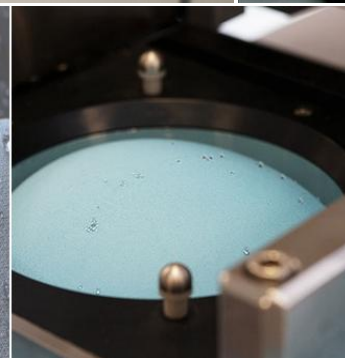
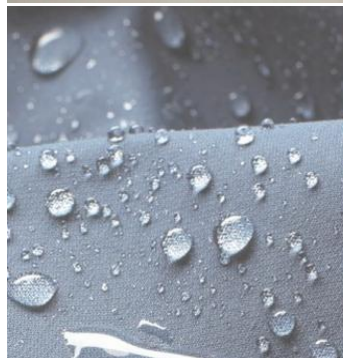


DURABLY WATERPROOF

SMARTFILM™ - It's A Membrane

Waterproof tests

All SMARTFILM™ product from our factory are put through tests simulating real sleep situation in our labs. Only if they meet our strict performance standards are they approved for production in our factory.



2

HIGH BREATHABLE

SMARTFILM™ - It's A Membrane

What does it mean?

The pores are 700 times larger than a water vapor molecule which means perspiration passes right through.

Our standards require that during heavy exertion our fabrics must breathe well enough to allow sweat to evaporate easily.

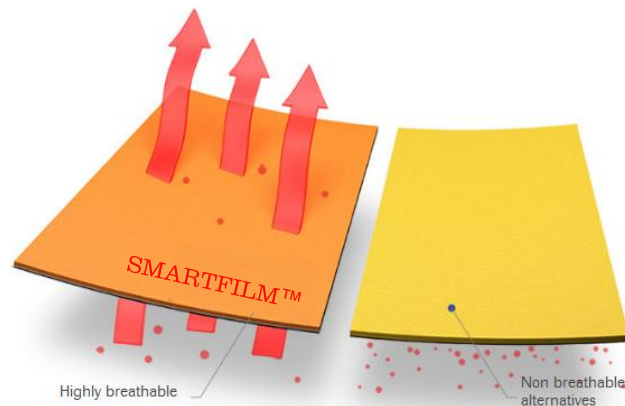
Why is it important?

When you're sleep, your skin removes excess heat via perspiration. This sweat (and other bodily fluids) is a breeding ground for mould, mildew, and bacteria.

To avoid uncomfortable sweat buildup, the SMARTFILM™ membrane allows the

“

“Breathability” is not, as many believe, about a fabric's ability to let air move through it, rather it refers to how well it lets your sweat escape in the form of moisture vapor.





EXTREMELY BREATHABLE

SMARTFILM™ - It's A Membrane

Breathability tests

As a general rule of thumb, the higher the grams of water vapor that pass through, the greater the breathability.



$\text{g}/\text{m}^2/\text{day}$

g

= grams of water vapor that pass through.

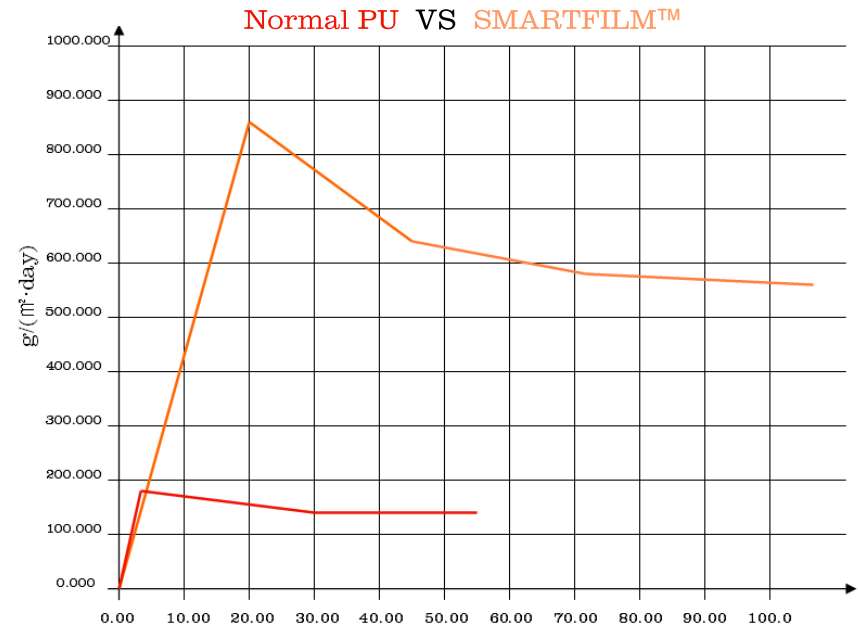
m^2

= a square meter of fabric .

day (or 24h)

= during a 24-hour period

Transmission Rate Data Graph

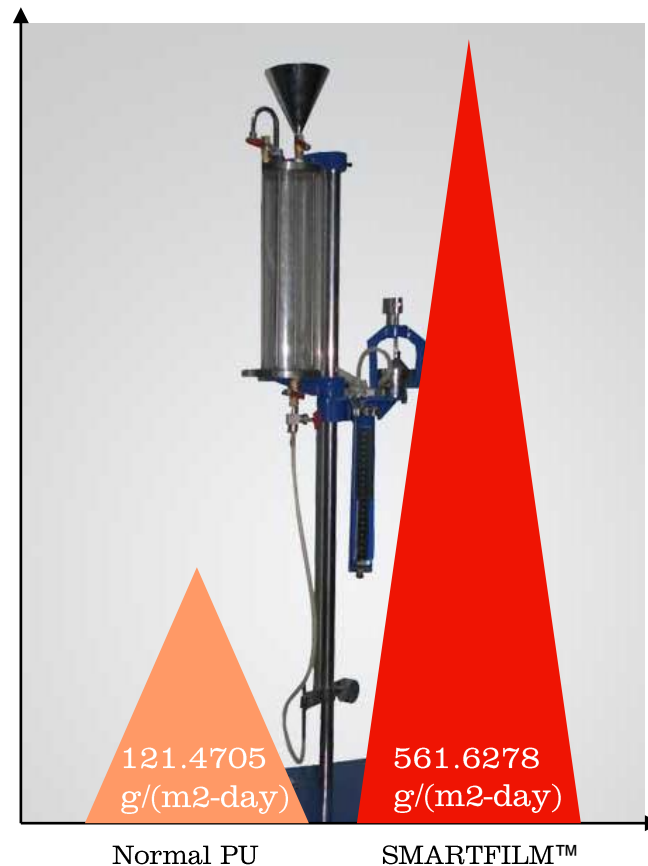


EXTREMELY BREATHABLE

SMARTFILM™ - It's A Membrane

Test Result

SMARTFILM™ are 4 times more breathable than Normal PU.



#2 IT'S A LAMINATE

In order to use the SMARTFILM™ membrane in manufacture of a finished product, it first has to be bonded between supporting material. This combination is referred to as SMARTFILM™ laminate.

1

LAMINATING PROCESS

SMARTFILM™ - It's A Laminate

What does it mean?

The SMARTFILM™ fabric was laminated under steam heat environment to ensure a closer fit.

Why is it important?

A bed product should be have durable process after constantly wash. The unique laminating process made the membrane perfect bonded with supporting material, and the functionality will not fade out.



2

LAMINATING SERIAL

SMARTFILM™ - It's A Laminate

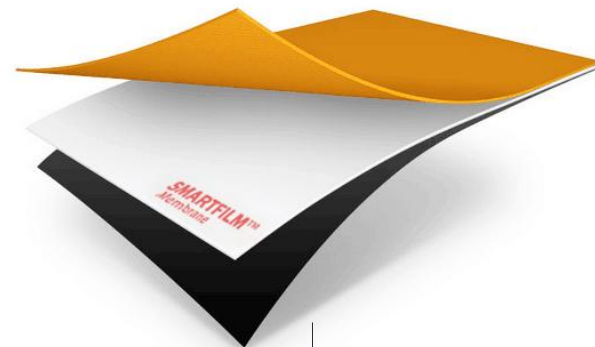
What does it mean?

For diverse usage occasions,
The SMARTFILM™
membrane was laminated
with 2-layers lamination & 3-
layers lamination



2-layers lamination

- Thinner & lighter
- Cost saving



3-layers lamination

- Wash Durable
- Good elasticity

A white sheet and a beige sleeve are hanging on a thin, horizontal, light-brown cord against a background of light-colored vertical wooden planks. The white sheet is on the left, and the beige sleeve is on the right. The sleeve has a distinct cuff at the bottom. The overall scene is clean and minimalist, with soft lighting.

#3 IT'S A PRODUCT

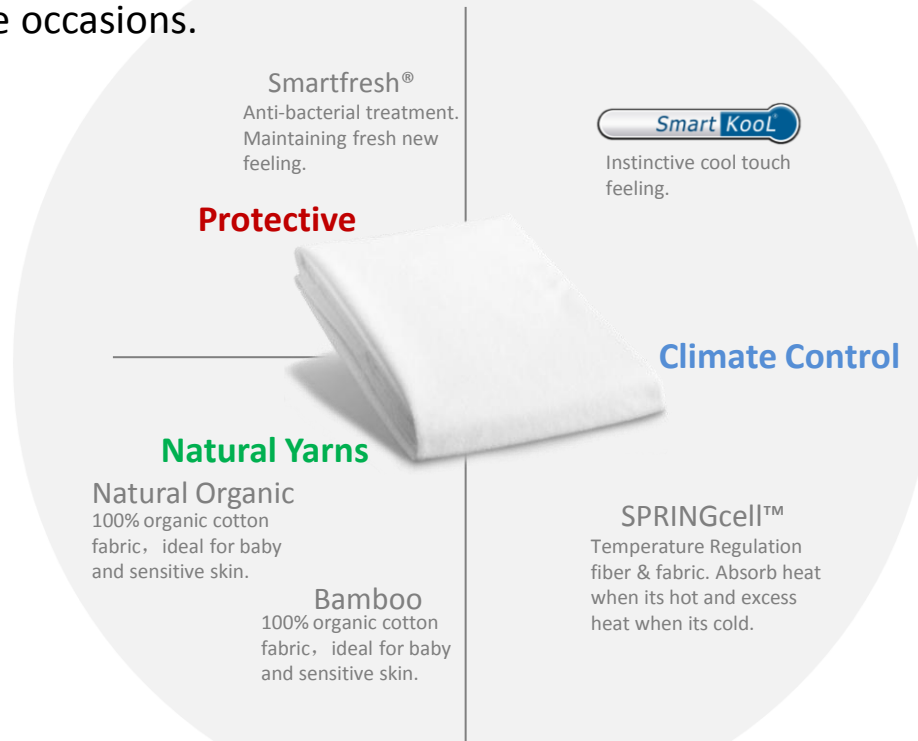
Combining with different linings and fabrics, SMARTFILM™ product technologies offer unique solutions to fit individual situation needs.

1

PRODUCT SERIOUS

SMARTFILM™ - It's A Product

All SMARTFILM™ Protectors Comes With 3 Features: **Waterproof** , **Anti-dust mite** and **Super-breathable**. By laminating with diverse supporting materials, we made our product serious suitable for more occasions.



#4 IT'S A PROMISE

All products engineered with SMARTFILM™ product technology carry the promise.

1

ABOUT US

SMARTFILM™ - It's A Promise

As a company, we working ceaselessly to further our research and developing innovative bedding products to improve your sleep experience.

As a manufacture, we are committed to quality.

As a organization, we care about our employees and local community as much as our value clients.

It's been so nice to meet you. The pleasure is ours.





Thank You

www.springtextile.com

Transmission Rate Data Graph

